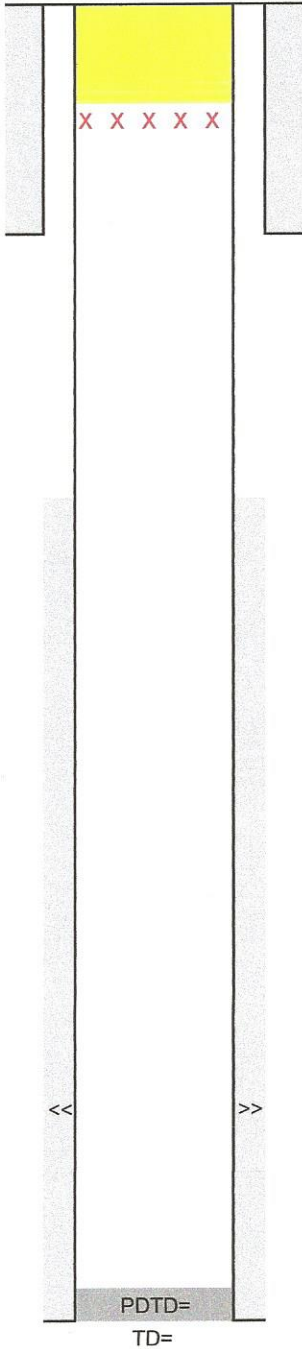


WELLBORE DIAGRAM Subsequent

Black Raven Energy Inc.
LAHNERT 843-20-12
Section 20 Township 8N 43W
Footages: 2165 FNL, 277 FWL
County PHILLIPS, State CO
API 05-095-06360

G.L.= 3719
K.B.= 3731
12



CIBP SET AT 50 FT
CMT TO SURFACE w/ 10sx Cut off wellhead and welded plate 4' below surface
7" 17 # set at 462.92
Cmt't w/ 112 sx to Surf.

TOC

NEVER DRILLED
5-1/2" 15.5# CSG @ xxxx' (7-7/8" O.H.)
Cmt'd w/ xxx sx