

T4S, R65W, 6th P.M.

ConocoPhillips Company

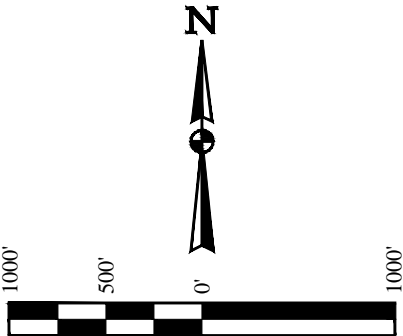
PARACHUTE #4-65 5-6 3H  
NE 1/4 SE 1/4, SECTION 5, T4S, R65W, 6th P.M.  
ARAPAHOE COUNTY, COLORADO

BASIS OF BEARINGS

BASIS OF BEARINGS IS A G.P.S. OBSERVATION

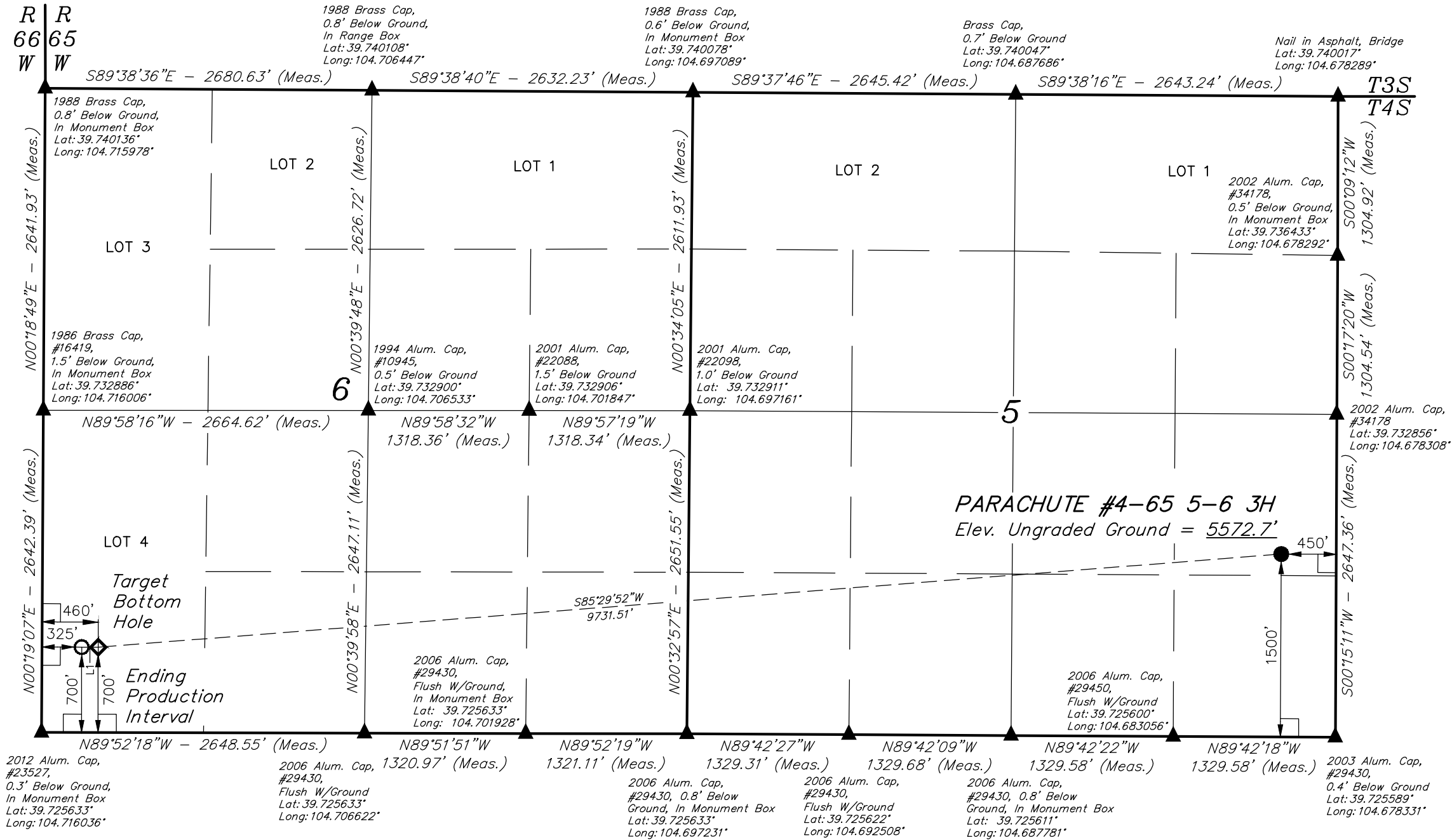
BASIS OF ELEVATION

BENCHMARK 374 LOCATED ON THE SECTION LINE BETWEEN  
SECTIONS 12 & 13, T5S, R64W, 6th. P.M., TAKEN FROM 1988  
PUBLISHED DATUM BY THE UNITED STATES DEPARTMENT OF  
THE INTERIOR, GEOLOGICAL SURVEY AS BEING 6054.61 FEET.



LINE TABLE

LINE	DIRECTION	LENGTH
L1	N89°52'18"W	135.00'



CERTIFICATE

THIS IS TO CERTIFY THAT THE ABOVE PLAT WAS PREPARED FROM FIELD  
NOTES OF ACTUAL SURVEYS MADE BY ME OR UNDER MY SUPERVISION,  
AND THAT THE SAME ARE TRUE AND CORRECT TO THE BEST OF MY  
KNOWLEDGE AND BELIEF.

REGISTERED LAND SURVEYOR  
REGISTRATION NO. 28285  
STATE OF COLORADO

PDOP = 1.5

LEGEND:

- 90° SYMBOL
- PROPOSED WELLHEAD.
- TARGET BOTTOM HOLE.
- SECTION CORNERS LOCATED.
- PRODUCTION INTERVAL.

<b>NAD 83 (TARGET BOTTOM HOLE)</b> LATITUDE = 39°43'39.20" (39.727556) LONGITUDE = 104°42'53.54" (104.714872)	<b>NAD 83 (ENDING PRODUCTION INTERVAL)</b> LATITUDE = 39°43'39.20" (39.727556) LONGITUDE = 104°42'51.81" (104.714392)	<b>NAD 83 (SURFACE LOCATION)</b> LATITUDE = 39°43'46.95" (39.729708) LONGITUDE = 104°40'47.70" (104.679917)
<b>NAD 27 (TARGET BOTTOM HOLE)</b> LATITUDE = 39°43'39.24" (39.727567) LONGITUDE = 104°42'51.65" (104.714347)	<b>NAD 27 (ENDING PRODUCTION INTERVAL)</b> LATITUDE = 39°43'39.24" (39.727567) LONGITUDE = 104°42'49.92" (104.713867)	<b>NAD 27 (SURFACE LOCATION)</b> LATITUDE = 39°43'47.00" (39.729722) LONGITUDE = 104°40'45.81" (104.679392)
<b>STATE PLANE NAD 83</b> N: 1690845.59 E: 3220831.69	<b>STATE PLANE NAD 83</b> N: 1690846.77 E: 3220966.65	<b>STATE PLANE NAD 83</b> N: 1691717.21 E: 3230656.33
<b>STATE PLANE NAD 27</b> N: 690837.59 E: 2220985.39	<b>STATE PLANE NAD 27</b> N: 690838.78 E: 2221120.35	<b>STATE PLANE NAD 27</b> N: 691709.35 E: 2230809.93



UELS, LLC  
Corporate Office \* 85 South 200 East  
Vernal, UT 84078 \* (435) 789-1017

SURVEYED BY: DALLAS NIELSEN, L.P.	DATE: 05-23-14
DRAWN BY: J.S.	DATE DRAWN: 06-03-14
SCALE: 1" = 1000'	REVISED: 08-08-14 K.B.

WELL LOCATION PLAT

T4S, R65W, 6th P.M.

ConocoPhillips Company

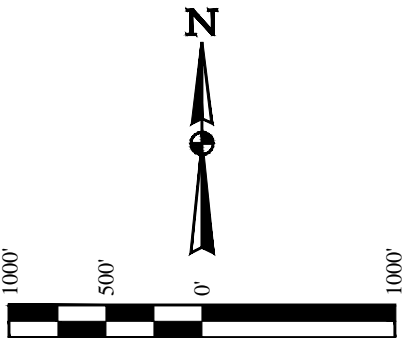
PARACHUTE #4-65 5-6 3H  
NE 1/4 SE 1/4, SECTION 5, T4S, R65W, 6th P.M.  
ARAPAHOE COUNTY, COLORADO

BASIS OF BEARINGS

BASIS OF BEARINGS IS A G.P.S. OBSERVATION

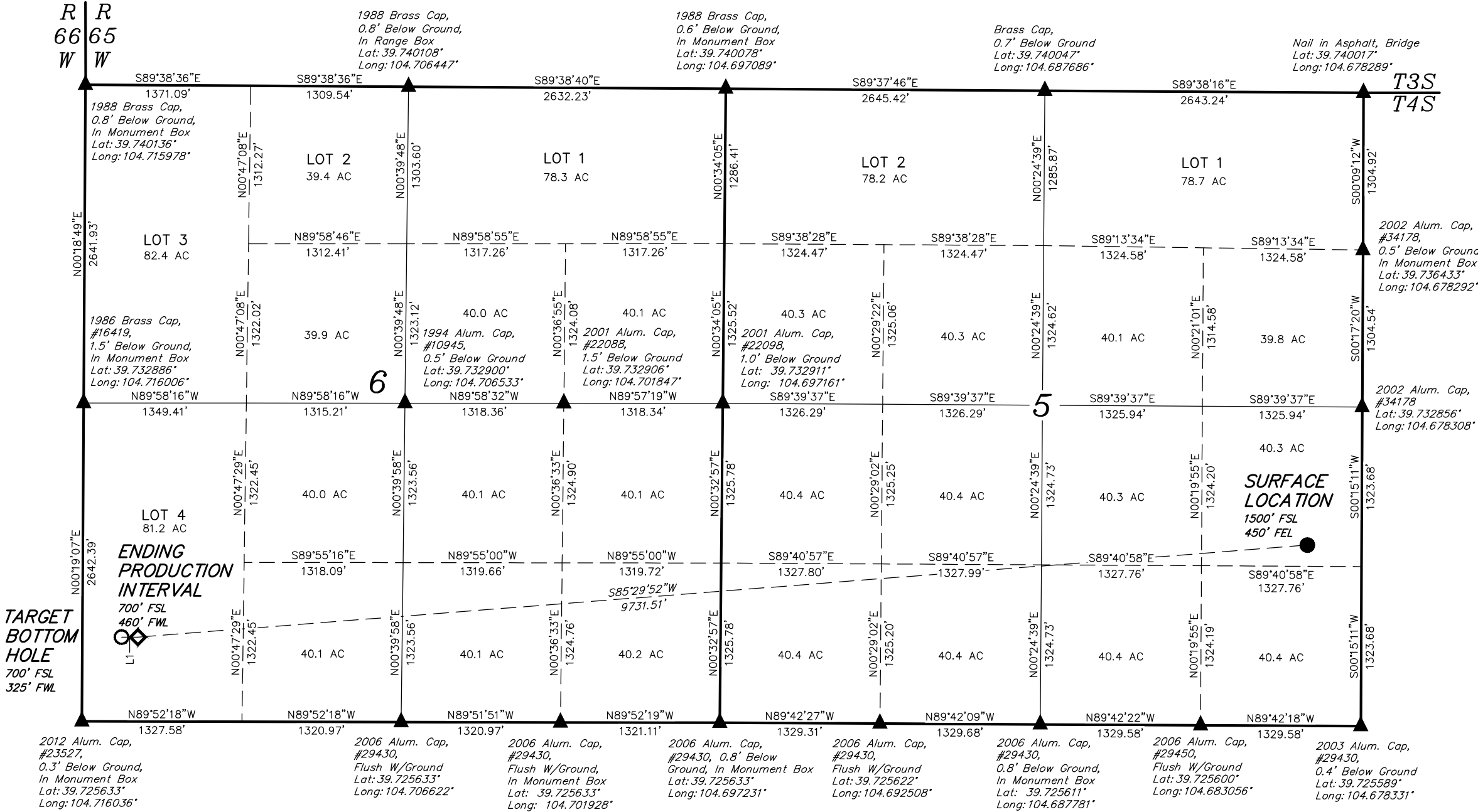
BASIS OF ELEVATION

BENCHMARK 374 LOCATED ON THE SECTION LINE BETWEEN  
SECTIONS 12 & 13, T5S, R64W, 6th. P.M., TAKEN FROM 1988  
PUBLISHED DATUM BY THE UNITED STATES DEPARTMENT OF  
THE INTERIOR, GEOLOGICAL SURVEY AS BEING 6054.61 FEET.



LINE TABLE

LINE	DIRECTION	LENGTH
L1	N89°52'18"W	135.00'



CERTIFICATE

THIS IS TO CERTIFY THAT THE ABOVE PLAT WAS PREPARED FROM FIELD  
NOTES OF ACTUAL SURVEYS MADE BY ME OR UNDER MY SUPERVISION,  
AND THAT THE SAME ARE TRUE AND CORRECT TO THE BEST OF MY  
KNOWLEDGE AND BELIEF.

REGISTERED LAND SURVEYOR  
REGISTRATION NO. 28285  
STATE OF COLORADO

PDOP = 1.5

LEGEND:

- 90° SYMBOL
- PROPOSED WELLHEAD.
- TARGET BOTTOM HOLE.
- SECTION CORNERS LOCATED.
- PRODUCTION INTERVAL.

<b>NAD 83 (TARGET BOTTOM HOLE)</b> LATITUDE = 39°43'39.20" (39.727556) LONGITUDE = 104°42'53.54" (104.714872)	<b>NAD 83 (ENDING PRODUCTION INTERVAL)</b> LATITUDE = 39°43'39.20" (39.727556) LONGITUDE = 104°42'51.81" (104.714392)	<b>NAD 83 (SURFACE LOCATION)</b> LATITUDE = 39°43'46.95" (39.729708) LONGITUDE = 104°40'47.70" (104.679917)
<b>NAD 27 (TARGET BOTTOM HOLE)</b> LATITUDE = 39°43'39.24" (39.727567) LONGITUDE = 104°42'51.65" (104.714347)	<b>NAD 27 (ENDING PRODUCTION INTERVAL)</b> LATITUDE = 39°43'39.24" (39.727567) LONGITUDE = 104°42'49.92" (104.713867)	<b>NAD 27 (SURFACE LOCATION)</b> LATITUDE = 39°43'47.00" (39.729722) LONGITUDE = 104°40'45.81" (104.679392)
<b>STATE PLANE NAD 83</b> N: 1690845.59 E: 3220831.69	<b>STATE PLANE NAD 83</b> N: 1690846.77 E: 3220966.65	<b>STATE PLANE NAD 83</b> N: 1691717.21 E: 3230656.33
<b>STATE PLANE NAD 27</b> N: 690837.59 E: 2220985.39	<b>STATE PLANE NAD 27</b> N: 690838.78 E: 2221120.35	<b>STATE PLANE NAD 27</b> N: 691709.35 E: 2230809.93



UELS, LLC  
Corporate Office \* 85 South 200 East  
Vernal, UT 84078 \* (435) 789-1017

SURVEYED BY: DALLAS NIELSEN, L.P.	DATE: 05-23-14
DRAWN BY: J.S.	DATE DRAWN: 06-03-14
SCALE: 1" = 1000'	REVISED: 08-08-14 K.B.

SECTION BREAKDOWN