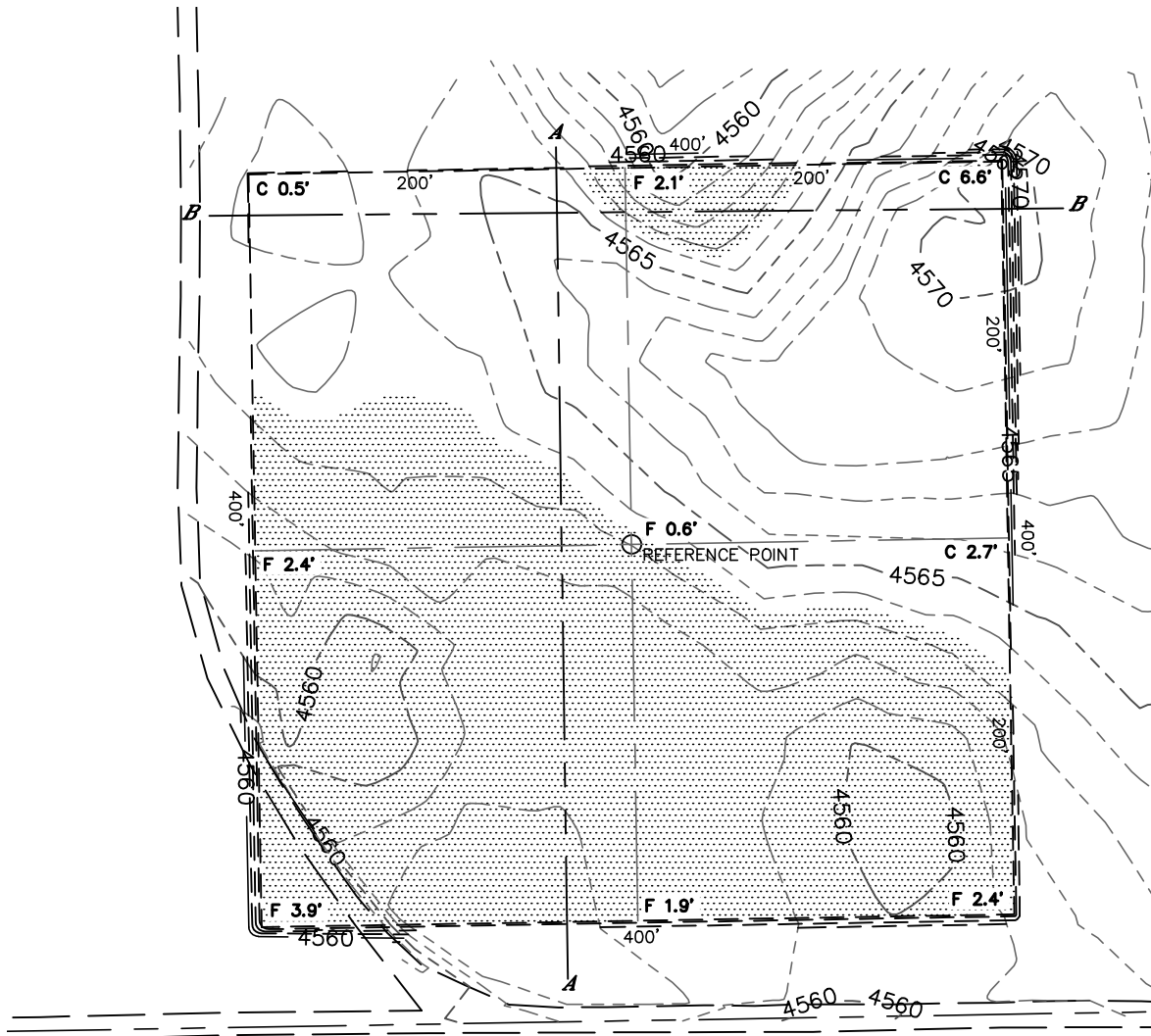




CUT & FILL DIAGRAM

PRONGHORN 24-7 BOOSTER STATION PAD

SECTION: 7
TOWNSHIP: 5N
RANGE: 61W



OPERATOR: BONANZA CREEK ENERGY, INC.
LOCATION: 253' FSL, 2085' FWL
EXISTING ELEV= 4563.0'
PROPOSED ELEV= 4563.6'
DISTURBANCE= 3.8 ACRES

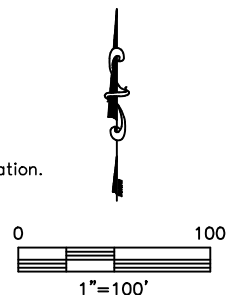
ESTIMATED EARTHWORK:
TOPSOIL= 6,053 CY
CUT= 6,691 CY
FILL= 6,686 CY
EXCESS= 5 CY

NOTE:

- 1) Ground elevations are based on an observed GPS elevation (NAVD 1988 DATUM).
- 2) No allowance has been made for soil expansion or compaction
- 3) Proposed elevation does not account for top soil removal.
- 4) Top soil volume assumes 12" depth across entire location.
- 5) Fill slopes 2:1
- 6) Cut slopes 1.5:1

LEGEND

EX. CONTOUR	---
PRO. CONTOUR	- - -
FILL AREA	



DATE: rev7/8/2014
PROJECT#: 2012073

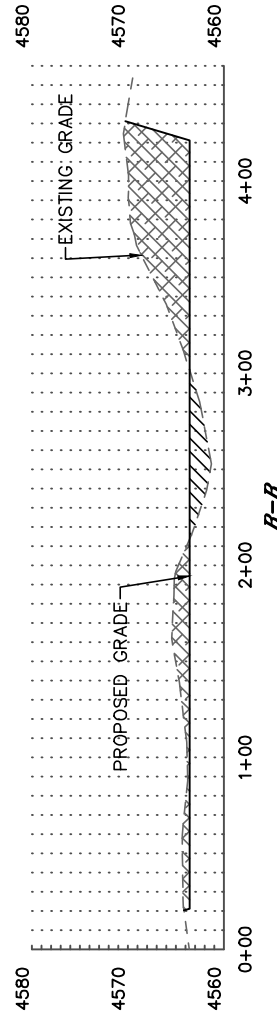
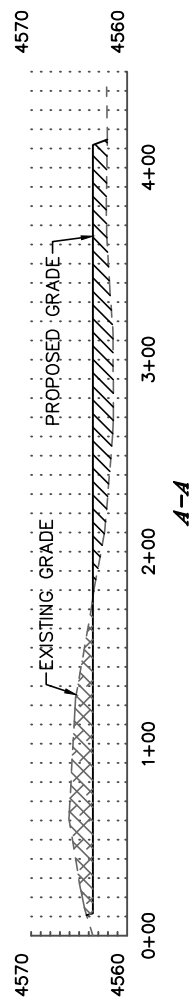


Lat40°, Inc. 1635 Foxtrail Drive, Suite 325 Loveland, CO 970-776-3321

CROSS SECTION DIAGRAM

PRONGHORN 24-7 BOOSTER STATION PAD

SECTION: 7
TOWNSHIP: 5N
RANGE: 61W



HORIZONTAL SCALE: 1"=100', VERTICAL SCALE: 1"=20'