

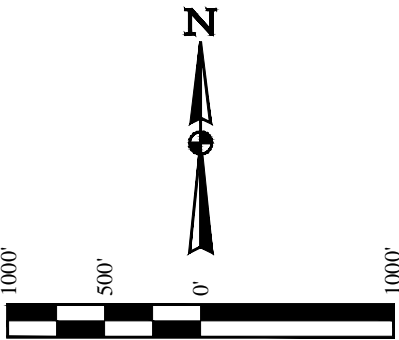
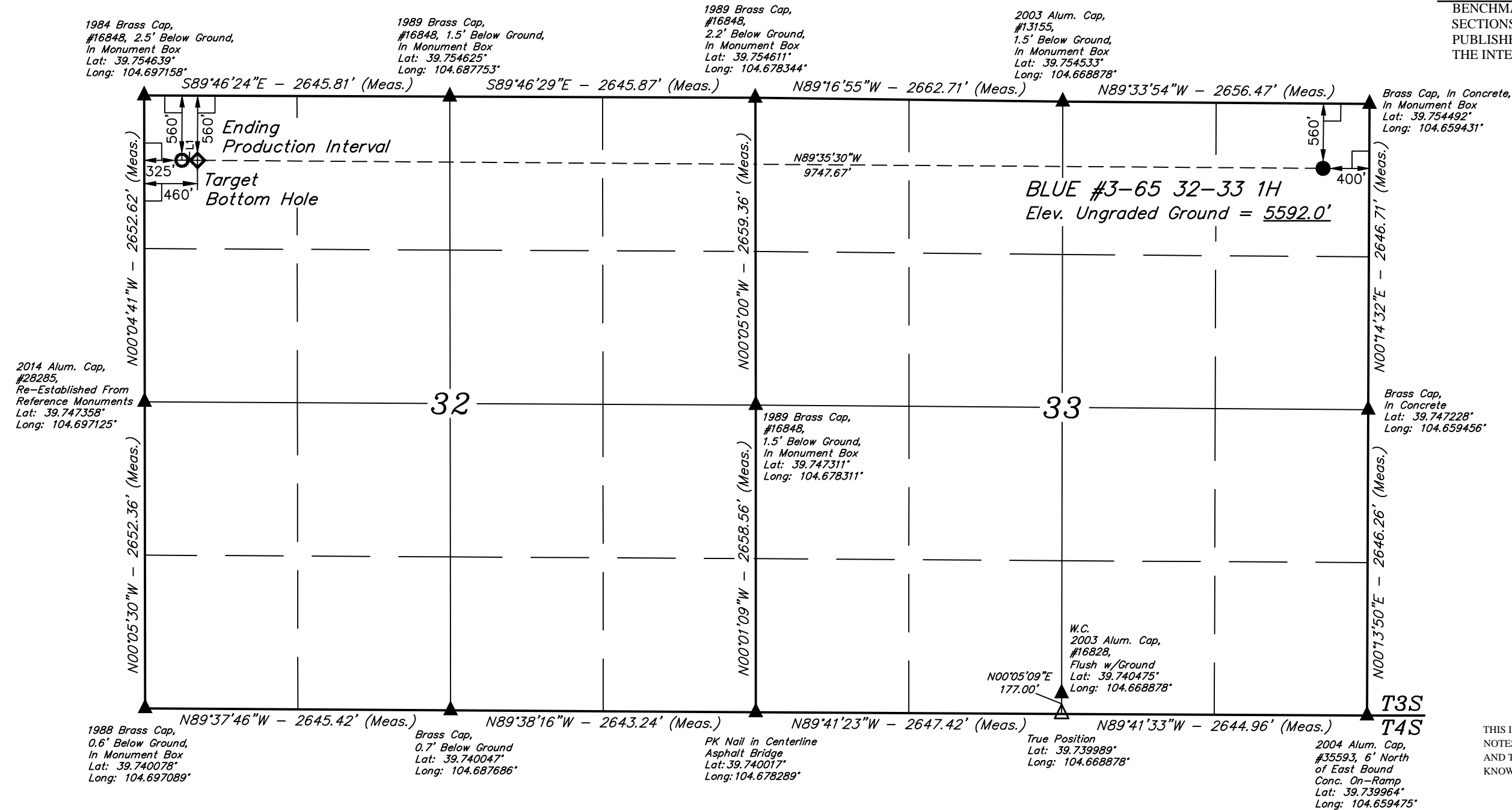
T3S, R65W, 6th P.M.

ConocoPhillips Company

BLUE #3-65 32-33 1H  
NE 1/4 NE 1/4, SECTION 33, T3S, R65W, 6th P.M.  
ADAMS COUNTY, COLORADO

BASIS OF BEARINGS  
BASIS OF ELEVATION

BENCHMARK 374 LOCATED ON THE SECTION LINE BETWEEN  
SECTIONS 12 & 13, T5S, R64W, 6th. P.M., TAKEN FROM 1988  
PUBLISHED DATUM BY THE UNITED STATES DEPARTMENT OF  
THE INTERIOR, GEOLOGICAL SURVEY AS BEING 6054.61 FEET.



LEGEND:

- 90° SYMBOL
- PROPOSED WELLHEAD.
- TARGET BOTTOM HOLE.
- PRODUCTION INTERVAL.
- SECTION CORNERS LOCATED.

NAD 83 (TARGET BOTTOM HOLE)	NAD 83 (ENDING PRODUCTION INTERVAL)	NAD 83 (SURFACE LOCATION)
LATITUDE = 39°45'11.16" (39.753100)	LATITUDE = 39°45'11.15" (39.753097)	LATITUDE = 39°45'10.66" (39.752961)
LONGITUDE = 104°41'45.59" (104.695997)	LONGITUDE = 104°41'43.86" (104.695517)	LONGITUDE = 104°39'39.09" (104.660858)
NAD 27 (TARGET BOTTOM HOLE)	NAD 27 (ENDING PRODUCTION INTERVAL)	NAD 27 (SURFACE LOCATION)
LATITUDE = 39°45'11.20" (39.753111)	LATITUDE = 39°45'11.20" (39.753111)	LATITUDE = 39°45'10.70" (39.752972)
LONGITUDE = 104°41'43.70" (104.695472)	LONGITUDE = 104°41'41.97" (104.694992)	LONGITUDE = 104°39'37.20" (104.660333)
STATE PLANE NAD 83	STATE PLANE NAD 83	STATE PLANE NAD 83
N: 1153932.88 E: 3226056.85	N: 1153933.86 E: 3226191.81	N: 1153973.87 E: 3235936.57
STATE PLANE NAD 27	STATE PLANE NAD 27	STATE PLANE NAD 27
N: 153936.07 E: 2226210.36	N: 153937.05 E: 2226345.32	N: 153977.20 E: 2236089.99

CERTIFICATE

THIS IS TO CERTIFY THAT THE ABOVE PLAT WAS PREPARED FROM FIELD NOTES OF ACTUAL SURVEYS MADE BY ME OR UNDER MY SUPERVISION, AND THAT THE SAME ARE TRUE AND CORRECT TO THE BEST OF MY KNOWLEDGE AND BELIEF.

REGISTERED LAND SURVEYOR  
REGISTRATION NO. 28285  
STATE OF COLORADO

UIN TAH  
ENGINEERING & LAND SURVEYING

UELS, LLC  
Corporate Office \* 85 South 200 East  
Vernal, UT 84078 \* (435) 789-1017

SURVEYED BY: GREG WEIMER, C.J.

DRAWN BY: J.S.

SCALE: 1" = 1000'

DATE: 05-08-14

DATE DRAWN: 06-30-14

REVISED: 00-00-00

WELL LOCATION PLAT

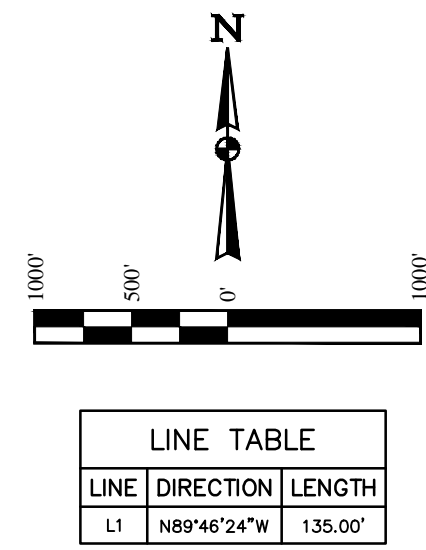
**ConocoPhillips Company**

---

**BLUE #3-65 32-33 1H**  
**NE 1/4 NE 1/4, SECTION 33, T3S, R65W, 6th P.M.**  
**ADAMS COUNTY, COLORADO**

**BASIS OF BEARINGS**  
BASIS OF BEARINGS IS A G.P.S. OBSERVATION

**BASIS OF ELEVATION**  
BENCHMARK 374 LOCATED ON THE SECTION LINE BETWEEN  
SECTIONS 12 & 13, T5S, R64W, 6th. P.M., TAKEN FROM 1988  
PUBLISHED DATUM BY THE UNITED STATES DEPARTMENT OF  
THE INTERIOR, GEOLOGICAL SURVEY AS BEING 6054.61 FEET.




THIS IS TO CERTIFY THAT THE ABOVE PLAT WAS PREPARED FROM FIELD NOTES OF ACTUAL SURVEYS MADE BY ME OR UNDER MY SUPERVISION AND THAT THE SAME ARE TRUE AND CORRECT TO THE BEST OF MY KNOWLEDGE AND BELIEF.


  
REGISTERED LAND SURVEYOR  
REGISTRATION NO. 28285  
STATE OF COLORADO


87-08-14


<b>NAD 83 (TARGET BOTTOM HOLE)</b>	<b>NAD 83 (ENDING PRODUCTION INTERVAL)</b>	<b>NAD 83 (SURFACE LOCATION)</b>
LATITUDE = 39°45'11.16" (39.753100) LONGITUDE = 104°41'45.59" (104.695997)	LATITUDE = 39°45'11.15" (39.753097) LONGITUDE = 104°41'43.86" (104.695517)	LATITUDE = 39°45'10.66" (39.752961) LONGITUDE = 104°39'39.09" (104.660858)
<b>NAD 27 (TARGET BOTTOM HOLE)</b>	<b>NAD 27 (ENDING PRODUCTION INTERVAL)</b>	<b>NAD 27 (SURFACE LOCATION)</b>
LATITUDE = 39°45'11.20" (39.753111) LONGITUDE = 104°41'43.70" (104.695472)	LATITUDE = 39°45'11.20" (39.753111) LONGITUDE = 104°41'41.97" (104.694992)	LATITUDE = 39°45'10.70" (39.752972) LONGITUDE = 104°39'37.20" (104.660333)
<b>STATE PLANE NAD 83</b>	<b>STATE PLANE NAD 83</b>	<b>STATE PLANE NAD 83</b>
N: 1153932.88 E: 3226056.85	N: 1153933.86 E: 3226191.81	N: 1153973.87 E: 3235936.57
<b>STATE PLANE NAD 27</b>	<b>STATE PLANE NAD 27</b>	<b>STATE PLANE NAD 27</b>
N: 153936.07 E: 2226210.36	N: 153937.05 E: 2226345.32	N: 153977.20 E: 2236089.99


**LEGEND:**

 = 90° SYMBOL

 = PROPOSED WELLHEAD.

 = TARGET BOTTOM HOLE.

 = PRODUCTION INTERVAL.

 = SECTION CORNERS LOCATED.

**UELS, LLC**  
Corporate Office \* 85 South 200 East  
Vernal, UT 84078 \* (435) 789-1017

SURVEYED BY: GREG WEIMER, C.J.	DATE: 05-08-14
DRAWN BY: J.S.	DATE DRAWN: 06-30-14
SCALE: 1" = 1000'	REVISED: 00-00-00

SECTION BREAKDOWN