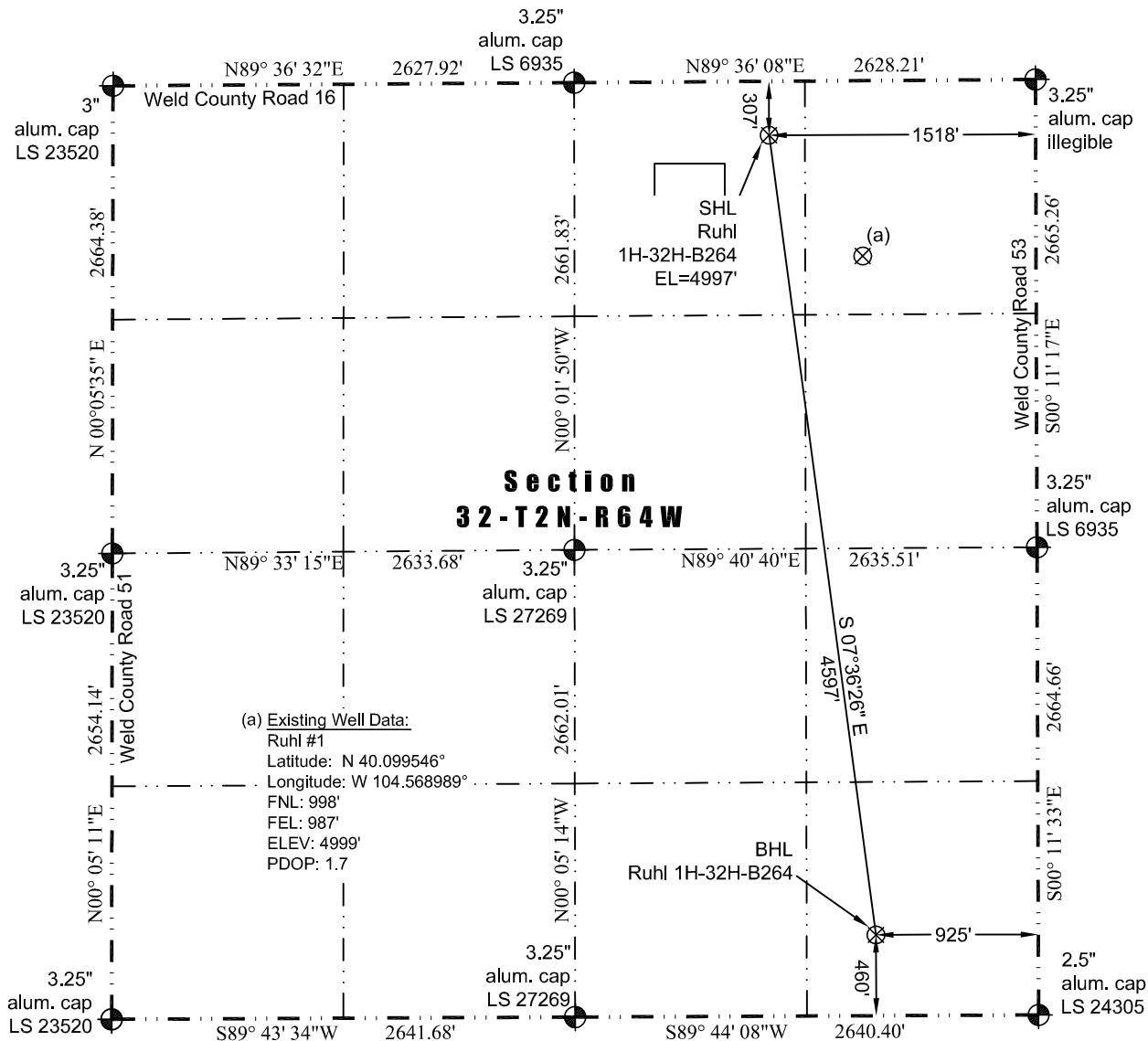




# WELL LOCATION CERTIFICATE

THIS MAP DOES NOT REPRESENT A BOUNDARY SURVEY

Washburn Land Surveying  
www.WashburnSurveying.com  
970-232-9645



(a) Existing Well Data:

Ruhl #1  
Latitude: N 40.099546°  
Longitude: W 104.568989°  
FNL: 998'  
FEL: 987'  
ELEV: 4999'  
PDOP: 1.7

In accordance with a request from Jay Knutson of EnCana Oil & Gas (USA) Inc., Washburn Land Surveying, LLC has determined the location of the **Ruhl 1H-32H-B264** well site to be SHL: 307' FNL and 1518' FEL, (BHL: 460' FSL and 925' FEL), as measured at ninety (90) degrees from the section lines of Section 32, Township 2 North, Range 64 West of the 6th Principal Meridian, Weld County Colorado.

Proposed Surface Hole Data:

Latitude: N 40.101448° (BHL: 40.088923°)  
Longitude: W 104.570873° (BHL: 104.568869°)  
PDOP: 1.5

Nearest:

Building: 747' northeast  
Building Unit: 747' northeast  
Public Road: 296' north  
Property Line: 307' north  
Existing Well: Ruhl #1; 870' southeast

Above Ground Utility: 334' north  
Railroad: 2,922' northwest  
Well Window: SHL is 300' outside  
High Occupancy Building Unit: +5,280'

Notes:

- 1) Bearings and distances based on NAD 83 Colorado North State Plane Coordinate, using RTK GPS observations taken 6/20/14 by operator Ryan Christi
- 2) Conversion factor to ground (1.0002793972).
- 3) Elevations based on NAVD 88 GPS heights and Geoid 2009 corrections.
- 4) See Location Drawing for visible improvements within 500 feet of Pad Site.
- 5) The surface use is a cultivated field.

NOTICE: According to Colorado law you must commence any legal action based upon any defect in this W.L.C. within three years after you first discover such defect. In no event may any action based upon any defect in this W.L.C. be commenced more than ten years from this said date of the certification shown hereon.

I hereby certify that this Well Location Certificate was prepared by me or under my direct supervision on 06/20/2014 for and on behalf of EnCana Oil & Gas (USA) Inc. That it is not a Land Survey Plat or an Improvement Survey Plat and that it is not to be relied upon for establishment of fences, buildings, or other future improvements.

John Robert McGehee LS#38219  
Well: Ruhl 1H-32H-B264 WLC