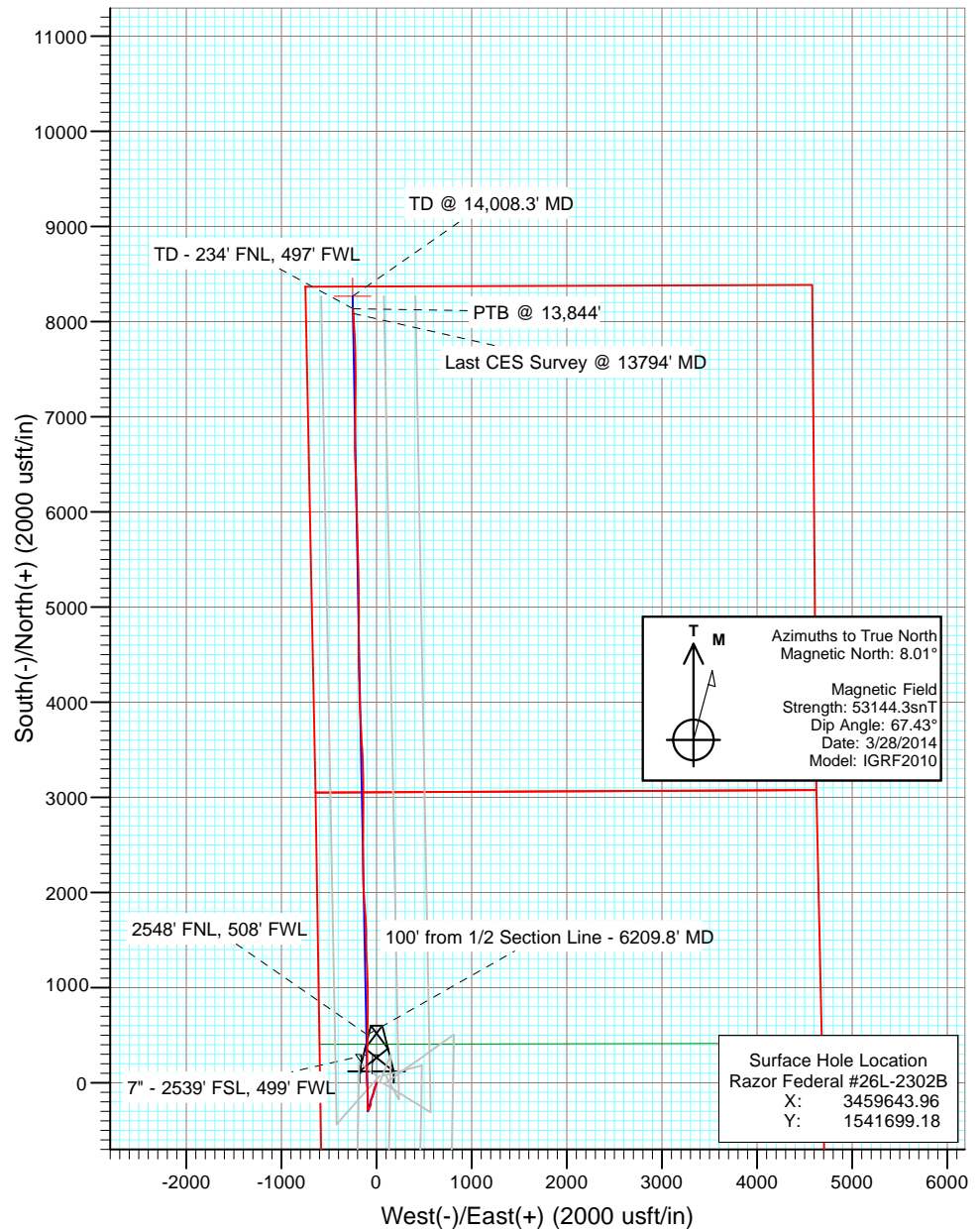
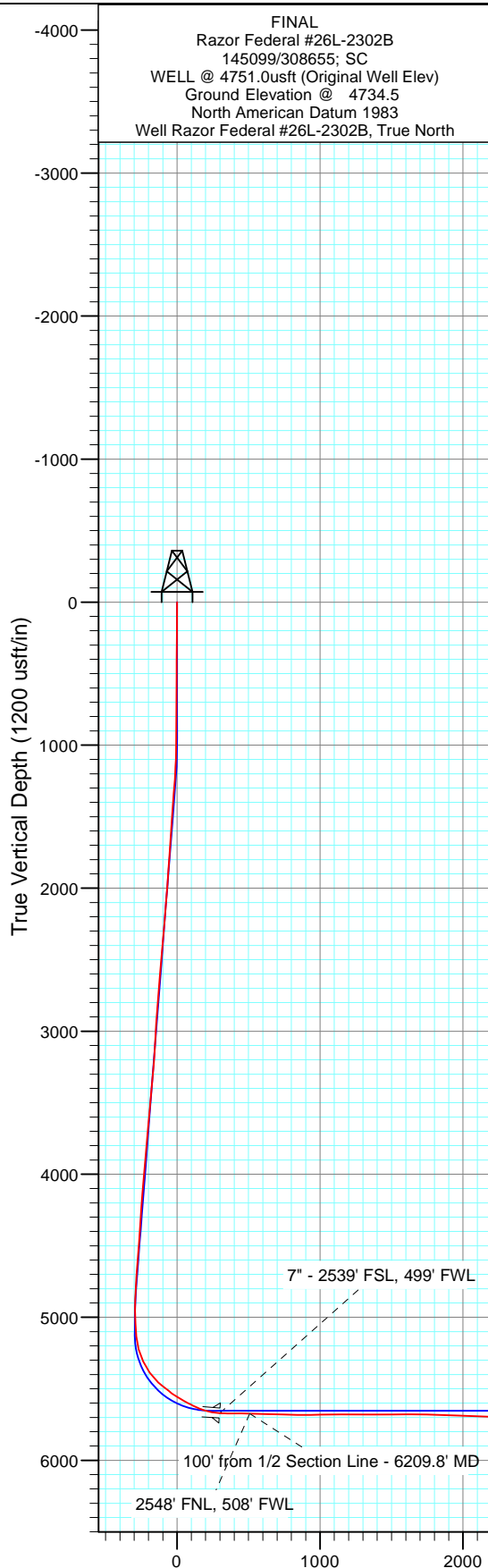




Project: Weld County, CO  
 Site: S26-T10N-R58W  
 Well: Razor Federal #26L-2302B  
 Wellbore: HZ  
 Design: FINAL



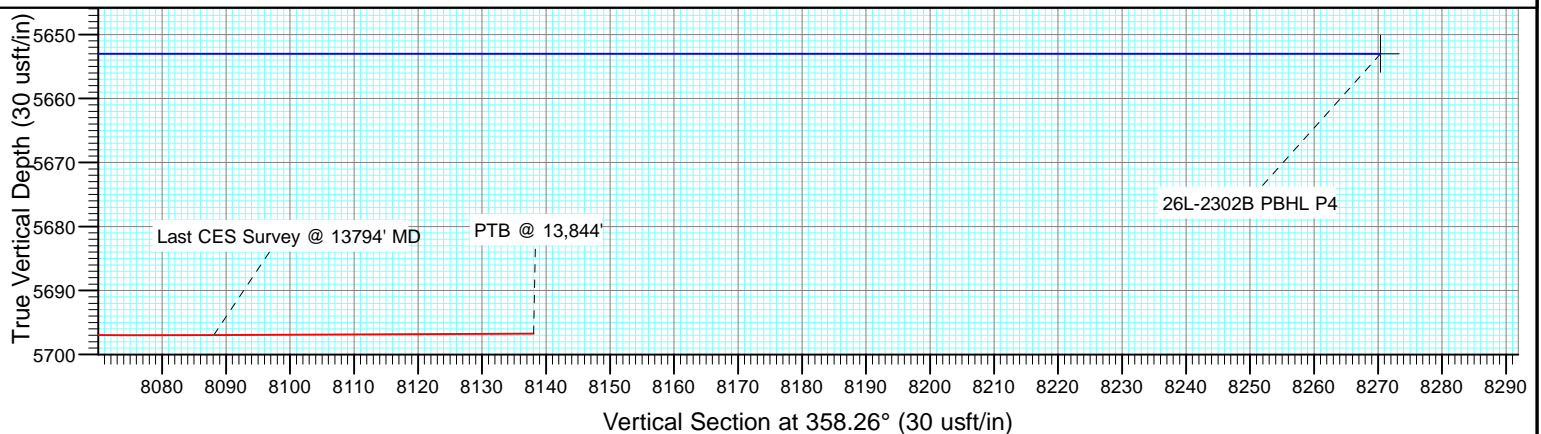
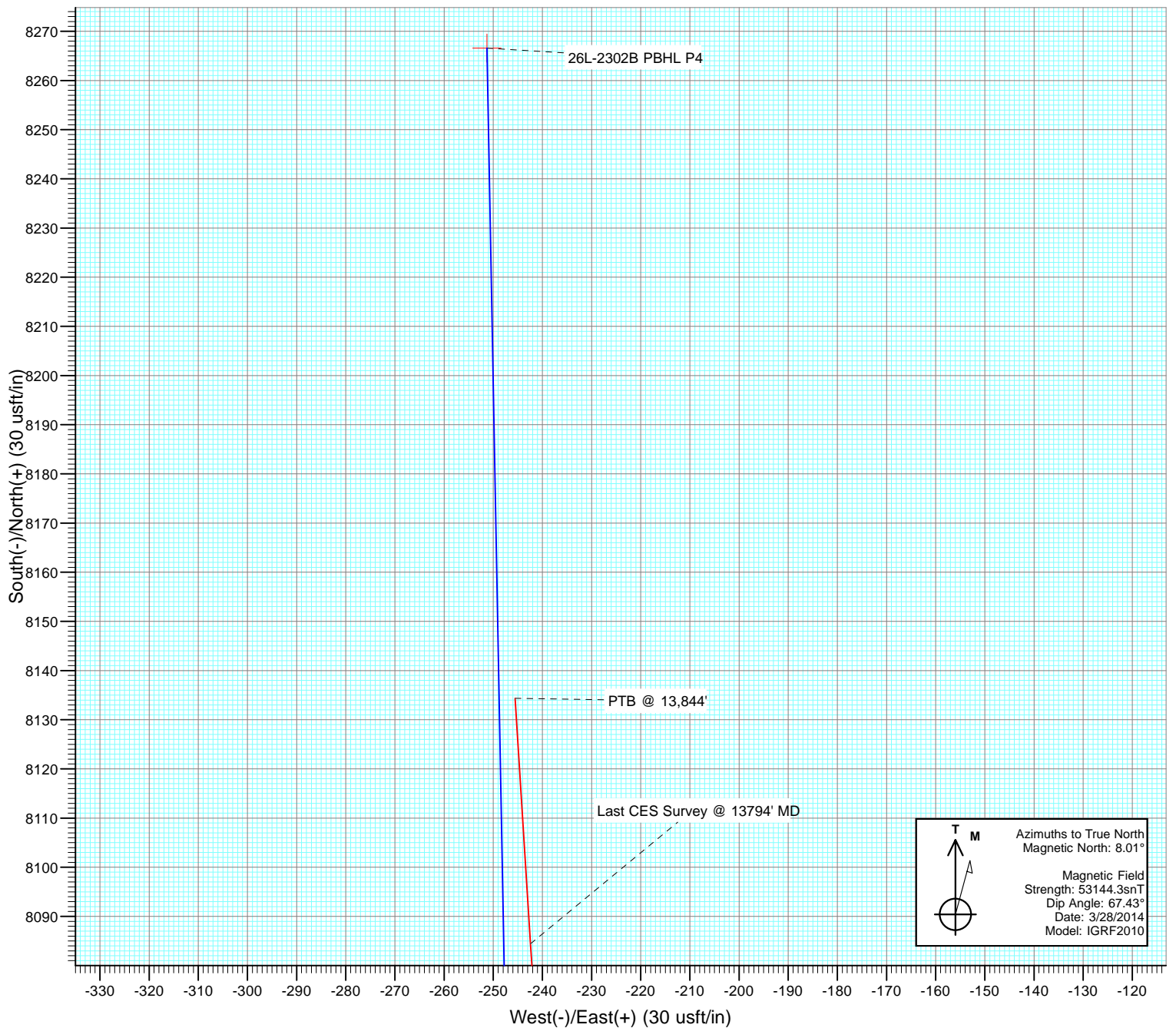
#### DESIGN TARGET DETAILS

Name	TVD	+N/-S	+E/-W	Northing	Easting
26L-2302B PBHL P4	5653.0	8266.6	-251.3	1549959.60	3459237.94

Vertical Section at 358.26° (1200 usft/in)



Project: Weld County, CO  
Site: S26-T10N-R58W  
Well: Razor Federal #26L-2302B  
Wellbore: HZ  
Design: FINAL



## Survey Report

<b>Company:</b>	Whiting Petroleum Corporation	<b>Local Co-ordinate Reference:</b>	Well Razor Federal #26L-2302B
<b>Project:</b>	Weld County, CO	<b>TVD Reference:</b>	WELL @ 4751.0usft (Original Well Elev)
<b>Site:</b>	S26-T10N-R58W	<b>MD Reference:</b>	WELL @ 4751.0usft (Original Well Elev)
<b>Well:</b>	Razor Federal #26L-2302B	<b>North Reference:</b>	True
<b>Wellbore:</b>	HZ	<b>Survey Calculation Method:</b>	Minimum Curvature
<b>Design:</b>	FINAL	<b>Database:</b>	USA EDM 5000 Multi Users DB

<b>Project</b>	Weld County, CO		
<b>Map System:</b>	US State Plane 1983	<b>System Datum:</b>	Mean Sea Level
<b>Geo Datum:</b>	North American Datum 1983		
<b>Map Zone:</b>	Colorado Northern Zone		

Site		S26-T10N-R58W			
Site Position:		Northing:	1,541,774.28 usft	Latitude:	40.808739
From:	Lat/Long	Easting:	3,459,642.55 usft	Longitude:	-103.839531
Position Uncertainty:	0.0 usft	Slot Radius:	13-3/16 "	Grid Convergence:	1.07 °

Well	Razor Federal #26L-2302B					
Well Position	+N/-S	0.0 usft	Northing:	1,541,699.18 usft	Latitude:	40.808533
	+E/-W	0.0 usft	Easting:	3,459,643.96 usft	Longitude:	-103.839531
Position Uncertainty		0.0 usft	Wellhead Elevation:	usft	Ground Level:	4,734.5 usft

<b>Wellbore</b>	HZ				
<b>Magnetics</b>	<b>Model Name</b>	<b>Sample Date</b>	<b>Declination (°)</b>	<b>Dip Angle (°)</b>	<b>Field Strength (nT)</b>
	IGRF2010	3/28/2014	8.01	67.43	53,144

<b>Design</b>	FINAL				
<b>Audit Notes:</b>					
<b>Version:</b>	1.0	<b>Phase:</b>	ACTUAL	<b>Tie On Depth:</b>	0.0
<b>Vertical Section:</b>	<b>Depth From (TVD) (usft)</b>	<b>+N/-S (usft)</b>	<b>+E/-W (usft)</b>	<b>Direction (°)</b>	
	0.0	0.0	0.0	358.26	

<b>Survey Program</b>	<b>Date</b>	5/2/2014			
<b>From (usft)</b>	<b>To (usft)</b>	<b>Survey (Wellbore)</b>	<b>Tool Name</b>	<b>Description</b>	
415.0	13,844.0	Survey #1 (HZ)	ISCWSA MWD	MWD - ISCWSA	

<b>Survey</b>										
<b>Measured Depth (usft)</b>	<b>Inclination (°)</b>	<b>Azimuth (°)</b>	<b>Vertical Depth (usft)</b>	<b>+N/-S (usft)</b>	<b>+E/-W (usft)</b>	<b>Vertical Section (usft)</b>	<b>Dogleg Rate (°/100usf)</b>	<b>Build Rate (°/100u)</b>	<b>Formations / Comments</b>	
0.0	0.00	0.00	0.0	0.0	0.0	0.0	0.00	0.00		
415.0	1.01	140.90	415.0	-2.8	2.3	-2.9	0.24	0.24		
507.0	0.18	212.86	507.0	-3.6	2.7	-3.7	1.05	-0.90		
965.0	0.44	180.87	965.0	-6.0	2.3	-6.0	0.07	0.06		
1,056.0	1.36	180.52	1,056.0	-7.4	2.3	-7.4	1.01	1.01		
1,148.0	2.46	194.50	1,147.9	-10.4	1.8	-10.4	1.29	1.20		
1,239.0	4.09	199.33	1,238.7	-15.3	0.2	-15.3	1.82	1.79		
1,331.0	5.10	206.44	1,330.5	-22.1	-2.7	-22.0	1.26	1.10		
1,514.0	4.62	209.43	1,512.8	-35.8	-9.9	-35.5	0.30	-0.26		
1,605.0	4.66	206.97	1,603.5	-42.3	-13.4	-41.9	0.22	0.04		
1,786.0	4.13	209.17	1,784.0	-54.5	-19.9	-53.9	0.31	-0.29		
1,853.0	4.31	198.97	1,850.8	-59.0	-21.9	-58.3	1.15	0.27		
1,945.0	3.96	201.42	1,942.5	-65.2	-24.2	-64.5	0.43	-0.38		

## Survey Report

<b>Company:</b>	Whiting Petroleum Corporation	<b>Local Co-ordinate Reference:</b>	Well Razor Federal #26L-2302B
<b>Project:</b>	Weld County, CO	<b>TVD Reference:</b>	WELL @ 4751.0usft (Original Well Elev)
<b>Site:</b>	S26-T10N-R58W	<b>MD Reference:</b>	WELL @ 4751.0usft (Original Well Elev)
<b>Well:</b>	Razor Federal #26L-2302B	<b>North Reference:</b>	True
<b>Wellbore:</b>	HZ	<b>Survey Calculation Method:</b>	Minimum Curvature
<b>Design:</b>	FINAL	<b>Database:</b>	USA EDM 5000 Multi Users DB

Survey									
Measured Depth (usft)	Inclination (°)	Azimuth (°)	Vertical Depth (usft)	+N/-S (usft)	+E/-W (usft)	Vertical Section (usft)	Dogleg Rate (°/100usf)	Build Rate (°/100u)	Formations / Comments
2,036.0	4.84	183.30	2,033.3	-72.0	-25.5	-71.2	1.80	0.97	
2,128.0	4.57	177.94	2,125.0	-79.5	-25.6	-78.7	0.56	-0.29	
2,220.0	5.10	186.87	2,216.6	-87.3	-26.0	-86.4	1.00	0.58	
2,311.0	4.97	187.63	2,307.3	-95.2	-27.0	-94.3	0.16	-0.14	
2,402.0	4.48	183.75	2,398.0	-102.6	-27.8	-101.7	0.64	-0.54	
2,494.0	5.45	198.51	2,489.6	-110.4	-29.4	-109.4	1.74	1.05	
2,585.0	4.88	199.49	2,580.3	-118.1	-32.0	-117.1	0.63	-0.63	
2,677.0	5.10	196.75	2,671.9	-125.7	-34.5	-124.6	0.35	0.24	
2,768.0	4.57	193.70	2,762.6	-133.1	-36.6	-131.9	0.65	-0.58	
2,859.0	4.88	202.52	2,853.3	-140.2	-38.9	-139.0	0.87	0.34	
2,951.0	4.09	196.64	2,945.0	-147.0	-41.3	-145.6	0.99	-0.86	
3,042.0	4.26	219.25	3,035.8	-152.7	-44.4	-151.3	1.81	0.19	
3,134.0	4.13	223.64	3,127.5	-157.7	-48.8	-156.2	0.38	-0.14	
3,225.0	4.92	202.74	3,218.2	-163.7	-52.6	-162.0	1.99	0.87	
3,317.0	4.84	205.85	3,309.9	-170.8	-55.8	-169.1	0.30	-0.09	
3,409.0	5.63	187.72	3,401.5	-178.8	-58.1	-177.0	1.98	0.86	
3,500.0	5.76	186.15	3,492.1	-187.8	-59.2	-185.9	0.22	0.14	
3,591.0	5.85	186.78	3,582.6	-196.9	-60.3	-195.0	0.12	0.10	
3,683.0	4.88	182.25	3,674.2	-205.5	-61.0	-203.5	1.15	-1.05	
3,774.0	4.79	160.91	3,764.9	-212.9	-59.9	-211.0	1.97	-0.10	
3,865.0	5.10	174.91	3,855.6	-220.6	-58.3	-218.7	1.37	0.34	
3,957.0	4.26	191.41	3,947.3	-228.0	-58.6	-226.1	1.72	-0.91	
4,049.0	5.67	192.30	4,038.9	-235.8	-60.2	-233.8	1.53	1.53	
4,140.0	5.23	206.41	4,129.5	-243.9	-63.0	-241.9	1.55	-0.48	
4,232.0	4.88	209.71	4,221.1	-251.0	-66.8	-248.9	0.49	-0.38	
4,324.0	4.57	205.98	4,312.8	-257.7	-70.4	-255.5	0.47	-0.34	
4,415.0	3.60	199.50	4,403.6	-263.7	-72.9	-261.3	1.18	-1.07	
4,507.0	4.97	200.74	4,495.3	-270.1	-75.3	-267.7	1.49	1.49	
4,598.0	4.75	194.56	4,586.0	-277.5	-77.6	-275.0	0.62	-0.24	
4,689.0	4.48	207.23	4,676.7	-284.3	-80.2	-281.7	1.16	-0.30	
4,781.0	3.43	205.99	4,768.5	-289.9	-83.1	-287.3	1.15	-1.14	
4,872.0	2.81	199.78	4,859.4	-294.5	-85.0	-291.8	0.78	-0.68	
4,964.0	1.10	264.84	4,951.3	-296.7	-86.7	-293.9	2.77	-1.86	
5,055.0	2.73	335.75	5,042.3	-294.8	-88.4	-292.0	2.84	1.79	
5,147.0	5.93	342.01	5,134.0	-288.3	-90.8	-285.4	3.51	3.48	
5,238.0	16.13	357.19	5,223.2	-271.1	-92.9	-268.2	11.56	11.21	
5,329.0	24.00	3.89	5,308.6	-240.0	-92.2	-237.1	9.00	8.65	
5,420.0	35.91	2.47	5,387.3	-194.7	-89.8	-191.9	13.11	13.09	
5,511.0	47.30	357.19	5,455.3	-134.4	-90.3	-131.6	13.09	12.52	
5,542.0	51.47	356.48	5,475.5	-110.9	-91.6	-108.1	13.56	13.45	
5,572.0	51.69	355.94	5,494.1	-87.5	-93.2	-84.6	1.59	0.73	
5,603.0	51.34	355.40	5,513.4	-63.3	-95.0	-60.4	1.77	-1.13	
5,633.0	53.27	355.36	5,531.8	-39.6	-96.9	-36.7	6.43	6.43	
5,664.0	57.23	356.37	5,549.4	-14.2	-98.7	-11.2	13.05	12.77	
5,695.0	59.78	357.32	5,565.6	12.2	-100.2	15.2	8.63	8.23	
5,725.0	60.26	357.46	5,580.6	38.1	-101.4	41.2	1.65	1.60	
5,756.0	61.89	358.43	5,595.6	65.2	-102.3	68.3	5.93	5.26	
5,786.0	63.56	0.01	5,609.3	91.9	-102.7	95.0	7.27	5.57	
5,816.0	64.75	1.17	5,622.4	118.9	-102.4	122.0	5.28	3.97	
5,846.0	66.29	0.89	5,634.9	146.2	-101.9	149.2	5.20	5.13	
5,877.0	70.29	1.12	5,646.3	175.0	-101.4	178.0	12.92	12.90	
5,909.0	75.38	1.08	5,655.8	205.5	-100.8	208.5	15.91	15.91	
5,941.0	79.46	1.51	5,662.7	236.8	-100.1	239.7	12.82	12.75	

## Survey Report

<b>Company:</b>	Whiting Petroleum Corporation	<b>Local Co-ordinate Reference:</b>	Well Razor Federal #26L-2302B
<b>Project:</b>	Weld County, CO	<b>TVD Reference:</b>	WELL @ 4751.0usft (Original Well Elev)
<b>Site:</b>	S26-T10N-R58W	<b>MD Reference:</b>	WELL @ 4751.0usft (Original Well Elev)
<b>Well:</b>	Razor Federal #26L-2302B	<b>North Reference:</b>	True
<b>Wellbore:</b>	HZ	<b>Survey Calculation Method:</b>	Minimum Curvature
<b>Design:</b>	FINAL	<b>Database:</b>	USA EDM 5000 Multi Users DB

Survey									
Measured Depth (usft)	Inclination (°)	Azimuth (°)	Vertical Depth (usft)	+N/-S (usft)	+E/-W (usft)	Vertical Section (usft)	Dogleg Rate (°/100usf)	Build Rate (°/100u)	Formations / Comments
5,968.0	83.60	1.49	5,666.7	263.5	-99.4	266.4	15.33	15.33	
6,069.0	89.54	1.15	5,672.7	364.2	-97.1	367.0	5.89	5.88	
6,164.0	90.02	1.28	5,673.1	459.2	-95.1	461.8	0.52	0.51	
6,209.8	89.24	1.10	5,673.4	505.0	-94.1	507.6	1.75	-1.71	100' from 1/2 Section Line - 2548' FNL, 508' FWL
6,259.0	88.40	0.90	5,674.4	554.1	-93.3	556.7	1.75	-1.71	
6,354.0	88.57	0.75	5,676.9	649.1	-91.9	651.6	0.24	0.18	
6,448.0	88.18	0.53	5,679.6	743.1	-90.9	745.5	0.48	-0.41	
6,543.0	88.92	358.81	5,682.0	838.0	-91.4	840.4	1.97	0.78	
6,638.0	90.99	359.70	5,682.1	933.0	-92.7	935.4	2.37	2.18	
6,733.0	91.12	359.49	5,680.3	1,028.0	-93.3	1,030.3	0.26	0.14	
6,828.0	89.85	357.89	5,679.5	1,122.9	-95.5	1,125.3	2.15	-1.34	
6,922.0	89.76	357.57	5,679.8	1,216.9	-99.2	1,219.3	0.35	-0.10	
7,017.0	90.02	357.77	5,680.0	1,311.8	-103.1	1,314.3	0.35	0.27	
7,112.0	89.98	358.32	5,680.0	1,406.7	-106.3	1,409.3	0.58	-0.04	
7,207.0	90.46	359.23	5,679.7	1,501.7	-108.4	1,504.3	1.08	0.51	
7,302.0	90.59	359.97	5,678.8	1,596.7	-109.0	1,599.3	0.79	0.14	
7,397.0	89.01	356.04	5,679.1	1,691.6	-112.3	1,694.3	4.46	-1.66	
7,492.0	89.01	355.96	5,680.8	1,786.4	-119.0	1,789.2	0.08	0.00	
7,587.0	87.91	356.24	5,683.3	1,881.1	-125.4	1,884.1	1.19	-1.16	
7,681.0	87.25	356.07	5,687.3	1,974.8	-131.7	1,977.9	0.73	-0.70	
7,776.0	86.99	357.15	5,692.1	2,069.5	-137.3	2,072.8	1.17	-0.27	
7,871.0	89.32	359.68	5,695.1	2,164.4	-139.9	2,167.7	3.62	2.45	
7,966.0	89.71	359.83	5,695.9	2,259.4	-140.4	2,262.7	0.44	0.41	
8,061.0	90.11	0.56	5,696.1	2,354.4	-140.0	2,357.6	0.88	0.42	
8,156.0	90.24	0.99	5,695.8	2,449.4	-138.7	2,452.5	0.47	0.14	
8,251.0	89.10	359.68	5,696.3	2,544.4	-138.2	2,547.4	1.83	-1.20	
8,346.0	89.54	357.94	5,697.5	2,639.4	-140.2	2,642.4	1.89	0.46	
8,441.0	90.59	0.75	5,697.3	2,734.4	-141.2	2,737.4	3.16	1.11	
8,536.0	90.51	2.24	5,696.4	2,829.3	-138.8	2,832.2	1.57	-0.08	
8,630.0	89.80	359.62	5,696.2	2,923.3	-137.2	2,926.1	2.89	-0.76	
8,725.0	89.89	359.54	5,696.4	3,018.3	-137.9	3,021.1	0.13	0.09	
8,817.0	90.15	359.29	5,696.4	3,110.3	-138.9	3,113.1	0.39	0.28	
8,910.0	91.38	359.36	5,695.2	3,203.3	-140.0	3,206.1	1.32	1.32	
9,002.0	91.60	359.15	5,692.8	3,295.2	-141.2	3,298.0	0.33	0.24	
9,095.0	89.58	357.81	5,691.8	3,388.2	-143.6	3,391.0	2.61	-2.17	
9,187.0	89.67	356.73	5,692.4	3,480.1	-148.0	3,483.0	1.18	0.10	
9,279.0	88.53	355.08	5,693.9	3,571.8	-154.6	3,574.9	2.18	-1.24	
9,371.0	89.76	357.86	5,695.2	3,663.6	-160.2	3,666.8	3.30	1.34	
9,462.0	90.42	357.88	5,695.1	3,754.6	-163.6	3,757.8	0.73	0.73	
9,554.0	90.20	357.31	5,694.6	3,846.5	-167.5	3,849.8	0.66	-0.24	
9,645.0	90.11	355.70	5,694.3	3,937.3	-173.0	3,940.8	1.77	-0.10	
9,737.0	90.51	359.23	5,693.8	4,029.2	-177.1	4,032.7	3.86	0.43	
9,828.0	90.68	358.80	5,692.9	4,120.2	-178.7	4,123.7	0.51	0.19	
9,919.0	90.73	358.00	5,691.8	4,211.2	-181.2	4,214.7	0.88	0.05	
10,011.0	88.92	356.82	5,692.1	4,303.1	-185.4	4,306.7	2.35	-1.97	
10,102.0	90.37	0.32	5,692.6	4,394.0	-187.6	4,397.7	4.16	1.59	
10,194.0	90.77	0.48	5,691.7	4,486.0	-187.0	4,489.6	0.47	0.43	
10,285.0	90.99	0.16	5,690.3	4,577.0	-186.5	4,580.5	0.43	0.24	
10,377.0	91.47	0.18	5,688.3	4,669.0	-186.2	4,672.5	0.52	0.52	
10,468.0	89.58	0.82	5,687.5	4,760.0	-185.4	4,763.4	2.19	-2.08	
10,559.0	89.41	0.42	5,688.3	4,850.9	-184.4	4,854.3	0.48	-0.19	
10,651.0	89.01	359.46	5,689.6	4,942.9	-184.5	4,946.3	1.13	-0.43	
10,743.0	87.78	358.99	5,692.2	5,034.9	-185.8	5,038.2	1.43	-1.34	

## Survey Report

<b>Company:</b>	Whiting Petroleum Corporation	<b>Local Co-ordinate Reference:</b>	Well Razor Federal #26L-2302B
<b>Project:</b>	Weld County, CO	<b>TVD Reference:</b>	WELL @ 4751.0usft (Original Well Elev)
<b>Site:</b>	S26-T10N-R58W	<b>MD Reference:</b>	WELL @ 4751.0usft (Original Well Elev)
<b>Well:</b>	Razor Federal #26L-2302B	<b>North Reference:</b>	True
<b>Wellbore:</b>	HZ	<b>Survey Calculation Method:</b>	Minimum Curvature
<b>Design:</b>	FINAL	<b>Database:</b>	USA EDM 5000 Multi Users DB

Survey									
Measured Depth (usft)	Inclination (°)	Azimuth (°)	Vertical Depth (usft)	+N/-S (usft)	+E/-W (usft)	Vertical Section (usft)	Dogleg Rate (°/100usf)	Build Rate (°/100u)	Formations / Comments
10,834.0	89.71	0.03	5,694.1	5,125.9	-186.6	5,129.2	2.41	2.12	
10,926.0	88.35	359.28	5,695.7	5,217.8	-187.1	5,221.1	1.69	-1.48	
11,018.0	89.67	358.41	5,697.3	5,309.8	-189.0	5,313.1	1.72	1.43	
11,109.0	90.11	358.39	5,697.5	5,400.8	-191.5	5,404.1	0.48	0.48	
11,200.0	90.37	358.58	5,697.1	5,491.7	-193.9	5,495.1	0.35	0.29	
11,291.0	90.02	358.24	5,696.8	5,582.7	-196.4	5,586.1	0.54	-0.38	
11,383.0	88.92	358.37	5,697.6	5,674.7	-199.2	5,678.1	1.20	-1.20	
11,397.0	88.92	358.32	5,697.9	5,688.7	-199.6	5,692.1	0.36	0.00	
11,488.0	91.43	359.19	5,697.6	5,779.6	-201.5	5,783.1	2.92	2.76	
11,579.0	90.77	358.51	5,695.9	5,870.6	-203.4	5,874.1	1.04	-0.73	
11,671.0	90.64	358.40	5,694.7	5,962.6	-205.8	5,966.1	0.19	-0.14	
11,762.0	89.98	358.11	5,694.2	6,053.5	-208.6	6,057.1	0.79	-0.73	
11,854.0	91.43	359.08	5,693.1	6,145.5	-210.9	6,149.1	1.90	1.58	
11,946.0	91.47	359.13	5,690.8	6,237.4	-212.3	6,241.0	0.07	0.04	
12,038.0	90.81	357.68	5,689.0	6,329.4	-214.9	6,333.0	1.73	-0.72	
12,129.0	90.33	357.43	5,688.0	6,420.3	-218.8	6,424.0	0.59	-0.53	
12,220.0	88.26	358.39	5,689.2	6,511.2	-222.1	6,515.0	2.51	-2.27	
12,311.0	88.44	357.93	5,691.8	6,602.1	-225.0	6,605.9	0.54	0.20	
12,403.0	89.14	0.31	5,693.7	6,694.1	-226.4	6,697.9	2.70	0.76	
12,495.0	89.10	359.78	5,695.1	6,786.1	-226.3	6,789.8	0.58	-0.04	
12,586.0	90.11	1.78	5,695.8	6,877.1	-225.1	6,880.7	2.46	1.11	
12,678.0	90.29	1.02	5,695.4	6,969.0	-222.8	6,972.6	0.85	0.20	
12,769.0	90.55	1.25	5,694.8	7,060.0	-221.0	7,063.5	0.38	0.29	
12,860.0	90.64	0.85	5,693.8	7,151.0	-219.4	7,154.4	0.45	0.10	
12,951.0	90.77	0.13	5,692.7	7,242.0	-218.6	7,245.3	0.80	0.14	
13,042.0	91.21	359.45	5,691.1	7,333.0	-218.9	7,336.2	0.89	0.48	
13,134.0	89.58	359.91	5,690.5	7,425.0	-219.4	7,428.2	1.84	-1.77	
13,225.0	90.02	359.52	5,690.8	7,516.0	-219.9	7,519.2	0.65	0.48	
13,317.0	89.67	358.22	5,691.1	7,607.9	-221.7	7,611.2	1.46	-0.38	
13,408.0	88.88	357.98	5,692.2	7,698.9	-224.7	7,702.2	0.91	-0.87	
13,500.0	89.05	357.83	5,693.9	7,790.8	-228.1	7,794.1	0.25	0.18	
13,591.0	89.01	357.52	5,695.4	7,881.7	-231.8	7,885.1	0.34	-0.04	
13,686.0	89.45	357.02	5,696.7	7,976.6	-236.3	7,980.1	0.70	0.46	
13,781.0	90.20	356.55	5,697.0	8,071.5	-241.6	8,075.1	0.93	0.79	
13,794.0	90.24	356.41	5,696.9	8,084.4	-242.4	8,088.1	1.12	0.31	Last CES Survey @ 13794' MD
13,844.0	90.24	356.41	5,696.7	8,134.3	-245.6	8,138.0	0.00	0.00	PTB @ 13,844' - TD - 234' FNL, 497' FWL

## Survey Report

<b>Company:</b>	Whiting Petroleum Corporation	<b>Local Co-ordinate Reference:</b>	Well Razor Federal #26L-2302B
<b>Project:</b>	Weld County, CO	<b>TVD Reference:</b>	WELL @ 4751.0usft (Original Well Elev)
<b>Site:</b>	S26-T10N-R58W	<b>MD Reference:</b>	WELL @ 4751.0usft (Original Well Elev)
<b>Well:</b>	Razor Federal #26L-2302B	<b>North Reference:</b>	True
<b>Wellbore:</b>	HZ	<b>Survey Calculation Method:</b>	Minimum Curvature
<b>Design:</b>	FINAL	<b>Database:</b>	USA EDM 5000 Multi Users DB

Targets									
Target Name									
- hit/miss target	Dip Angle	Dip Dir.	TVD	+N/-S	+E/-W	Northing	Easting	Latitude	Longitude
- Shape	(°)	(°)	(usft)	(usft)	(usft)	(usft)	(usft)		
26L-2302B TGT	0.00	1.07	5,675.0	7,766.7	-241.3	1,549,460.00	3,459,257.25	40.829850	-103.840403
- actual wellpath misses target center by 23.3usft at 13476.0usft MD (5693.5 TVD, 7766.9 N, -227.2 E)									
- Point									
26L-2302B VP P4	0.00	1.08	5,032.1	-298.3	-91.6	1,541,399.18	3,459,557.96	40.807714	-103.839862
- actual wellpath misses target center by 4.6usft at 5044.8usft MD (5032.1 TVD, -295.2 N, -88.2 E)									
- Point									
26L-2302B PBHL P4	0.00	1.07	5,653.0	8,266.6	-251.3	1,549,959.60	3,459,237.94	40.831222	-103.840439
- actual wellpath misses target center by 139.4usft at 13844.0usft MD (5696.7 TVD, 8134.3 N, -245.6 E)									
- Point									
26L-2302B VP	0.00	1.07	5,054.1	-513.1	-415.7	1,541,178.38	3,459,237.96	40.807125	-103.841033
- actual wellpath misses target center by 393.5usft at 5059.7usft MD (5047.0 TVD, -294.6 N, -88.5 E)									
- Point									
26L-2302B PBHL	0.00	1.07	5,675.0	8,266.6	-251.3	1,549,959.60	3,459,237.94	40.831222	-103.840439
- actual wellpath misses target center by 134.1usft at 13844.0usft MD (5696.7 TVD, 8134.3 N, -245.6 E)									
- Point									

Casing Points					
Measured Depth (usft)	Vertical Depth (usft)		Name	Casing Diameter (")	Hole Diameter (")
6,000.0	5,669.7	7"		0	0

Design Annotations					
Measured Depth (usft)	Vertical Depth (usft)	Local Coordinates			
		+N/-S (usft)	+E/-W (usft)	Comment	
6,209.8	5,673.4	505.0	-94.1	100' from 1/2 Section Line	
6,209.8	5,673.4	505.0	-94.1	2548' FNL, 508' FWL	
13,794.0	5,696.9	8,084.4	-242.4	Last CES Survey @ 13794' MD	
13,844.0	5,696.7	8,134.3	-245.6	PTB @ 13,844'	
13,844.0	5,696.7	8,134.3	-245.6	TD - 234' FNL, 497' FWL	

Checked By: _____	Approved By: _____	Date: _____
-------------------	--------------------	-------------