

EXTRACTION OIL & GAS

Location: COLORADO Slot: SLOT#01 RANCHO WATER VALLEY 4(587FNL & 267FEL,SEC.04)
Field: WELD COUNTY (NAD83/TRUE NORTH) Well: RANCHO WATER VALLEY 4
Facility: SEC.04-T05N-R67W Wellbore: RANCHO WATER VALLEY 4 PWB

Plot reference wellpath is RANCHO WATER VALLEY 4 (REV-C.0) PWP

True vertical depths are referenced to RIG (RKB)	Grid System: NAD83 / Lambert Colorado SP, Northern Zone (501), US feet
Measured depths are referenced to RIG (RKB)	North Reference: True north
RIG (RKB) to Mean Sea Level: 4799 feet	Scale: True distance
Mean Sea Level to Mud line (At Slot: SLOT#01 RANCHO WATER VALLEY 4(587FNL & 267FEL,SEC.04)): 0 feet	Depths are in feet
Coordinates are in feet referenced to Slot	Created by: painretr on 8/27/2014

Location Information

Facility Name				Grid East (US ft)	Grid North (US ft)	Latitude	Longitude
SEC.04-T05N-R67W				3170424.561	1402077.673	40°26'07.764"N	104°53'15.936"W
Slot	Local N (ft)	Local E (ft)	Grid East (US ft)	Grid North (US ft)	Latitude	Longitude	
SLOT#01 RANCHO WATER VALLEY 4(587FNL & 267FEL,SEC.04)	-369.41	-75.72	3170351.397	1401707.760	40°26'04.114"N	104°53'16.915"W	
RIG (RKB) to Mud line (At Slot: SLOT#01 RANCHO WATER VALLEY 4(587FNL & 267FEL,SEC.04))						4799ft	
Mean Sea Level to Mud line (At Slot: SLOT#01 RANCHO WATER VALLEY 4(587FNL & 267FEL,SEC.04))						0ft	
RIG (RKB) to Mean Sea Level						4799ft	

Targets

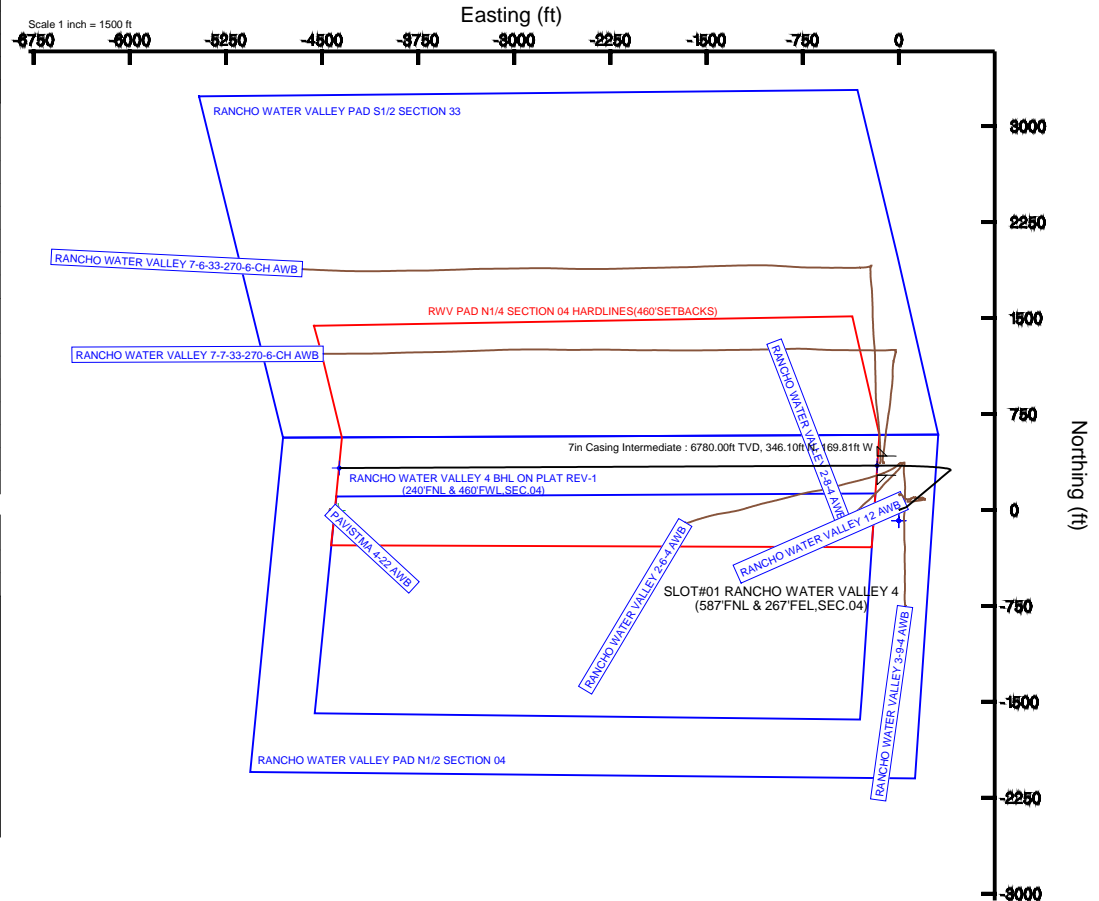
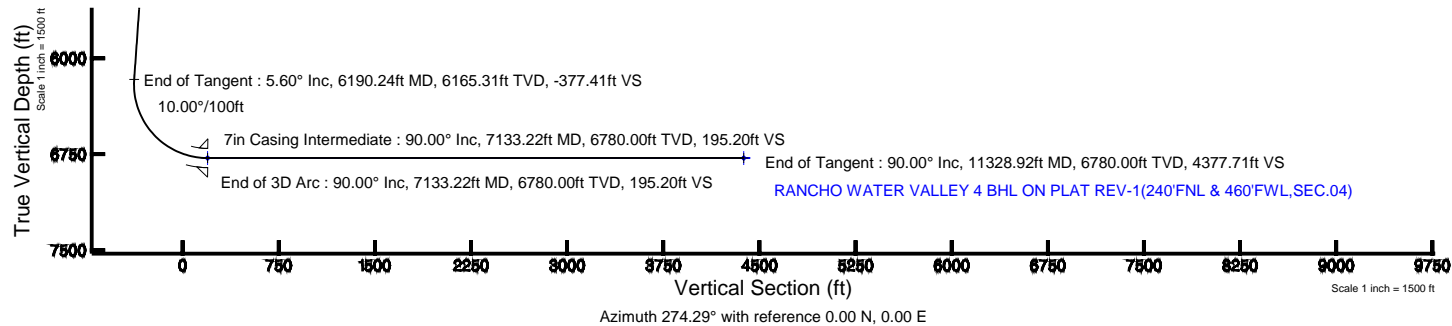
Name	MD (ft)	TVD (ft)	Local N (ft)	Local E (ft)	Grid East (US ft)	Grid North (US ft)	Latitude	Longitude
RANCHO WATER VALLEY PAD N1/2 SECTION 04		0.00	-84.16	-0.56	3170351.42	1401623.60	40°28'03.282"N	104°53'16.922"W
RANCHO WATER VALLEY PAD S1/2 SECTION 33		0.00	-84.16	-0.56	3170351.42	1401623.60	40°28'03.282"N	104°53'16.922"W
RANCHO WATER VALLEY 4 BHL ON PLAT REV-1(240FNL & 460FWL,SEC.04)	11328.92	6780.00	327.18	-4365.46	3169983.95	1402004.79	40°28'07.343"N	104°54'13.370"W
RANCHO WATER VALLEY 4 LANDING	7133.22	6780.00	346.10	-169.81	3170179.21	1402052.66	40°28'07.534"N	104°53'19.111"W
RWW PAD N1/2 SECTION 04 HARDLINES(460°SETBACKS)		6780.00	-84.16	-0.56	3170351.42	1401623.60	40°28'03.282"N	104°53'16.922"W
RWW PAD N1/4 SECTION 04 HARDLINES(460°SETBACKS)		6780.00	-84.16	-0.56	3170351.42	1401623.60	40°28'03.282"N	104°53'16.922"W

Survey Program

Start MD (ft)	End MD (ft)	Tool	Model	Log Name/Comment	Wellbore
24.00	12000.00	NaviTrak	NaviTrak (Standard)		RANCHO WATER VALLEY 4 PWB

Well Profile Data

Design Comment	MD (ft)	Inc (°)	Az (°)	TVD (ft)	Local N (ft)	Local E (ft)	DLS (°/100ft)	VS (ft)
Tie On	24.00	0.000	70.000	24.00	0.00	0.00	0.00	0.00
End of Tangent	850.00	0.000	70.000	850.00	0.00	0.00	0.00	0.00
End of Build	1150.00	6.000	70.000	1149.45	5.37	14.75	2.00	-14.30
End of Tangent	1550.00	6.000	70.000	1547.26	19.67	54.04	0.00	-52.42
End of 3D Arc	1652.96	5.602	49.897	1649.71	24.75	62.94	2.00	-60.91
End of Tangent	6190.24	5.602	49.897	6165.31	310.05	401.71	0.00	-377.41
End of 3D Arc	7133.22	90.000	269.742	6780.00	346.10	-169.81	10.00	195.20
End of Tangent	11328.92	90.000	269.742	6780.00	327.18	-4365.46	0.00	4377.71



BGGM (1945.0 to 2016.0) Dip: 66.94° Field: 52741.5 nT
Magnetic North is 8.59 degrees East of True North (at 8/20/2014)

To correct azimuth from Magnetic to True add 8.59 degrees



Planned Wellpath Report

RANCHO WATER VALLEY 4 (REV-C.0) PWP

Page 1 of 7



REFERENCE WELLPATH IDENTIFICATION

Operator	EXTRACTION OIL & GAS	Slot	SLOT#01 RANCHO WATER VALLEY 4(587'FNL & 267'FEL,SEC.04)
Area	COLORADO	Well	RANCHO WATER VALLEY 4
Field	WELD COUNTY (NAD83/TRUE NORTH)	Wellbore	RANCHO WATER VALLEY 4 PWB
Facility	SEC.04-T05N-R67W		

REPORT SETUP INFORMATION

Projection System	NAD83 / Lambert Colorado SP, Northern Zone (501), US feet	Software System	WellArchitect® 4.0.0
North Reference	True	User	Painsetr
Scale	0.999962	Report Generated	8/27/2014 at 1:00:21 PM
Convergence at slot	n/a	Database/Source file	WA_Denver/RANCHO_WATER_VALLEY_4_PWB.xml

WELLPATH LOCATION

	Local coordinates		Grid coordinates		Geographic coordinates	
	North[ft]	East[ft]	Easting[US ft]	Northing[US ft]	Latitude	Longitude
Slot Location	-369.41	-75.72	3170351.40	1401707.76	40°26'04.114"N	104°53'16.915"W
Facility Reference Pt			3170424.56	1402077.67	40°26'07.764"N	104°53'15.936"W
Field Reference Pt			3185481.27	1419166.81	40°28'55.560"N	104°49'59.556"W

WELLPATH DATUM

Calculation method	Minimum curvature	RIG (RKB) to Facility Vertical Datum	4799.00ft
Horizontal Reference Pt	Slot	RIG (RKB) to Mean Sea Level	4799.00ft
Vertical Reference Pt	RIG (RKB)	RIG (RKB) to Mud Line at Slot (SLOT#01 RANCHO WATER VALLEY 4(587'FNL & 267'FEL,SEC.04))	4799.00ft
MD Reference Pt	RIG (RKB)	Section Origin	N 0.00, E 0.00 ft
Field Vertical Reference	Mean Sea Level	Section Azimuth	274.29°



Planned Wellpath Report

RANCHO WATER VALLEY 4 (REV-C.0) PWP

Page 2 of 7



REFERENCE WELLPATH IDENTIFICATION			
Operator	EXTRACTION OIL & GAS	Slot	SLOT#01 RANCHO WATER VALLEY 4(587'FNL & 267'FEL,SEC.04)
Area	COLORADO	Well	RANCHO WATER VALLEY 4
Field	WELD COUNTY (NAD83/TRUE NORTH)	Wellbore	RANCHO WATER VALLEY 4 PWB
Facility	SEC.04-T05N-R67W		

WELLPATH DATA (122 stations) † = interpolated/extrapolated station								
MD [ft]	Inclination [°]	Azimuth [°]	TVD [ft]	Vert Sect [ft]	North [ft]	East [ft]	DLS [°/100ft]	Comments
0.00†	0.000	70.000	0.00	0.00	0.00	0.00	0.00	
24.00	0.000	70.000	24.00	0.00	0.00	0.00	0.00	Tie On
124.00†	0.000	70.000	124.00	0.00	0.00	0.00	0.00	
224.00†	0.000	70.000	224.00	0.00	0.00	0.00	0.00	
324.00†	0.000	70.000	324.00	0.00	0.00	0.00	0.00	
424.00†	0.000	70.000	424.00	0.00	0.00	0.00	0.00	
524.00†	0.000	70.000	524.00	0.00	0.00	0.00	0.00	
624.00†	0.000	70.000	624.00	0.00	0.00	0.00	0.00	
724.00†	0.000	70.000	724.00	0.00	0.00	0.00	0.00	
824.00†	0.000	70.000	824.00	0.00	0.00	0.00	0.00	
850.00	0.000	70.000	850.00	0.00	0.00	0.00	0.00	End of Tangent
924.00†	1.480	70.000	923.99	-0.87	0.33	0.90	2.00	
1024.00†	3.480	70.000	1023.89	-4.82	1.81	4.96	2.00	
1124.00†	5.480	70.000	1123.58	-11.93	4.48	12.30	2.00	
1150.00	6.000	70.000	1149.45	-14.30	5.37	14.75	2.00	End of Build
1224.00†	6.000	70.000	1223.05	-21.36	8.01	22.02	0.00	
1324.00†	6.000	70.000	1322.50	-30.88	11.59	31.84	0.00	
1424.00†	6.000	70.000	1421.95	-40.41	15.16	41.66	0.00	
1524.00†	6.000	70.000	1521.40	-49.94	18.74	51.48	0.00	
1550.00	6.000	70.000	1547.26	-52.42	19.67	54.04	0.00	End of Tangent
1624.00†	5.641	55.799	1620.88	-58.79	23.04	60.68	2.00	
1652.96	5.602	49.897	1649.71	-60.91	24.75	62.94	2.00	End of 3D Arc
1724.00†	5.602	49.897	1720.40	-65.87	29.21	68.24	0.00	
1824.00†	5.602	49.897	1819.93	-72.84	35.50	75.71	0.00	
1924.00†	5.602	49.897	1919.45	-79.82	41.79	83.17	0.00	
2024.00†	5.602	49.897	2018.97	-86.79	48.08	90.64	0.00	
2124.00†	5.602	49.897	2118.49	-93.77	54.36	98.11	0.00	
2224.00†	5.602	49.897	2218.02	-100.75	60.65	105.57	0.00	
2324.00†	5.602	49.897	2317.54	-107.72	66.94	113.04	0.00	
2424.00†	5.602	49.897	2417.06	-114.70	73.23	120.51	0.00	



Planned Wellpath Report

RANCHO WATER VALLEY 4 (REV-C.0) PWP

Page 3 of 7



REFERENCE WELLPATH IDENTIFICATION			
Operator	EXTRACTION OIL & GAS	Slot	SLOT#01 RANCHO WATER VALLEY 4(587'FNL & 267'FEL,SEC.04)
Area	COLORADO	Well	RANCHO WATER VALLEY 4
Field	WELD COUNTY (NAD83/TRUE NORTH)	Wellbore	RANCHO WATER VALLEY 4 PWB
Facility	SEC.04-T05N-R67W		

WELLPATH DATA (122 stations) † = interpolated/extrapolated station								
MD [ft]	Inclination [°]	Azimuth [°]	TVD [ft]	Vert Sect [ft]	North [ft]	East [ft]	DLS [°/100ft]	Comments
2524.00†	5.602	49.897	2516.58	-121.67	79.52	127.97	0.00	
2624.00†	5.602	49.897	2616.11	-128.65	85.80	135.44	0.00	
2724.00†	5.602	49.897	2715.63	-135.62	92.09	142.91	0.00	
2824.00†	5.602	49.897	2815.15	-142.60	98.38	150.37	0.00	
2924.00†	5.602	49.897	2914.67	-149.57	104.67	157.84	0.00	
3024.00†	5.602	49.897	3014.20	-156.55	110.96	165.30	0.00	
3124.00†	5.602	49.897	3113.72	-163.53	117.24	172.77	0.00	
3224.00†	5.602	49.897	3213.24	-170.50	123.53	180.24	0.00	
3324.00†	5.602	49.897	3312.76	-177.48	129.82	187.70	0.00	
3424.00†	5.602	49.897	3412.29	-184.45	136.11	195.17	0.00	
3524.00†	5.602	49.897	3511.81	-191.43	142.40	202.64	0.00	
3624.00†	5.602	49.897	3611.33	-198.40	148.68	210.10	0.00	
3724.00†	5.602	49.897	3710.85	-205.38	154.97	217.57	0.00	
3824.00†	5.602	49.897	3810.38	-212.35	161.26	225.03	0.00	
3924.00†	5.602	49.897	3909.90	-219.33	167.55	232.50	0.00	
4024.00†	5.602	49.897	4009.42	-226.30	173.84	239.97	0.00	
4124.00†	5.602	49.897	4108.94	-233.28	180.12	247.43	0.00	
4224.00†	5.602	49.897	4208.47	-240.26	186.41	254.90	0.00	
4324.00†	5.602	49.897	4307.99	-247.23	192.70	262.37	0.00	
4424.00†	5.602	49.897	4407.51	-254.21	198.99	269.83	0.00	
4524.00†	5.602	49.897	4507.03	-261.18	205.28	277.30	0.00	
4624.00†	5.602	49.897	4606.56	-268.16	211.56	284.77	0.00	
4724.00†	5.602	49.897	4706.08	-275.13	217.85	292.23	0.00	
4824.00†	5.602	49.897	4805.60	-282.11	224.14	299.70	0.00	
4924.00†	5.602	49.897	4905.12	-289.08	230.43	307.16	0.00	
5024.00†	5.602	49.897	5004.65	-296.06	236.72	314.63	0.00	
5124.00†	5.602	49.897	5104.17	-303.03	243.00	322.10	0.00	
5224.00†	5.602	49.897	5203.69	-310.01	249.29	329.56	0.00	
5324.00†	5.602	49.897	5303.21	-316.99	255.58	337.03	0.00	
5424.00†	5.602	49.897	5402.73	-323.96	261.87	344.50	0.00	



Planned Wellpath Report

RANCHO WATER VALLEY 4 (REV-C.0) PWP

Page 4 of 7



REFERENCE WELLPATH IDENTIFICATION

Operator	EXTRACTION OIL & GAS	Slot	SLOT#01 RANCHO WATER VALLEY 4(587'FNL & 267'FEL,SEC.04)
Area	COLORADO	Well	RANCHO WATER VALLEY 4
Field	WELD COUNTY (NAD83/TRUE NORTH)	Wellbore	RANCHO WATER VALLEY 4 PWB
Facility	SEC.04-T05N-R67W		

WELLPATH DATA (122 stations) † = interpolated/extrapolated station

MD [ft]	Inclination [°]	Azimuth [°]	TVD [ft]	Vert Sect [ft]	North [ft]	East [ft]	DLS [°/100ft]	Comments
5524.00†	5.602	49.897	5502.26	-330.94	268.16	351.96	0.00	
5624.00†	5.602	49.897	5601.78	-337.91	274.44	359.43	0.00	
5724.00†	5.602	49.897	5701.30	-344.89	280.73	366.89	0.00	
5824.00†	5.602	49.897	5800.82	-351.86	287.02	374.36	0.00	
5924.00†	5.602	49.897	5900.35	-358.84	293.31	381.83	0.00	
6024.00†	5.602	49.897	5999.87	-365.81	299.60	389.29	0.00	
6124.00†	5.602	49.897	6099.39	-372.79	305.88	396.76	0.00	
6190.24	5.602	49.897	6165.31	-377.41	310.05	401.71	0.00	End of Tangent
6224.00†	3.712	14.132	6198.97	-378.77	312.17	403.23	10.00	
6324.00†	9.759	291.173	6298.39	-371.20	318.39	396.10	10.00	
6424.00†	19.402	280.020	6395.08	-346.50	324.35	371.78	10.00	
6524.00†	29.280	276.176	6486.08	-305.43	329.89	331.01	10.00	
6624.00†	39.217	274.158	6568.64	-249.23	334.82	275.03	10.00	
6724.00†	49.176	272.854	6640.25	-179.62	339.01	205.53	10.00	
6824.00†	59.146	271.893	6698.72	-98.70	342.32	124.64	10.00	
6924.00†	69.121	271.115	6742.30	-8.94	344.65	34.80	10.00	
7024.00†	79.100	270.435	6769.64	86.93	345.94	-61.25	10.00	
7124.00†	89.080	269.799	6779.93	186.01	346.14	-160.59	10.00	
7133.22	90.000	269.742	6780.00†	195.20	346.10	-169.81	10.00	End of 3D Arc
7224.00†	90.000	269.742	6780.00	285.70	345.69	-260.59	0.00	
7324.00†	90.000	269.742	6780.00	385.38	345.24	-360.59	0.00	
7424.00†	90.000	269.742	6780.00	485.07	344.79	-460.59	0.00	
7524.00†	90.000	269.742	6780.00	584.75	344.34	-560.59	0.00	
7624.00†	90.000	269.742	6780.00	684.44	343.89	-660.58	0.00	
7724.00†	90.000	269.742	6780.00	784.12	343.43	-760.58	0.00	
7824.00†	90.000	269.742	6780.00	883.81	342.98	-860.58	0.00	
7924.00†	90.000	269.742	6780.00	983.50	342.53	-960.58	0.00	
8024.00†	90.000	269.742	6780.00	1083.18	342.08	-1060.58	0.00	
8124.00†	90.000	269.742	6780.00	1182.87	341.63	-1160.58	0.00	
8224.00†	90.000	269.742	6780.00	1282.55	341.18	-1260.58	0.00	



Planned Wellpath Report

RANCHO WATER VALLEY 4 (REV-C.0) PWP

Page 5 of 7



REFERENCE WELLPATH IDENTIFICATION			
Operator	EXTRACTION OIL & GAS	Slot	SLOT#01 RANCHO WATER VALLEY 4(587'FNL & 267'FEL,SEC.04)
Area	COLORADO	Well	RANCHO WATER VALLEY 4
Field	WELD COUNTY (NAD83/TRUE NORTH)	Wellbore	RANCHO WATER VALLEY 4 PWB
Facility	SEC.04-T05N-R67W		

WELLPATH DATA (122 stations) † = interpolated/extrapolated station								
MD [ft]	Inclination [°]	Azimuth [°]	TVD [ft]	Vert Sect [ft]	North [ft]	East [ft]	DLS [°/100ft]	Comments
8324.00†	90.000	269.742	6780.00	1382.24	340.73	-1360.58	0.00	
8424.00†	90.000	269.742	6780.00	1481.92	340.28	-1460.58	0.00	
8524.00†	90.000	269.742	6780.00	1581.61	339.83	-1560.58	0.00	
8624.00†	90.000	269.742	6780.00	1681.29	339.38	-1660.57	0.00	
8724.00†	90.000	269.742	6780.00	1780.98	338.92	-1760.57	0.00	
8824.00†	90.000	269.742	6780.00	1880.67	338.47	-1860.57	0.00	
8924.00†	90.000	269.742	6780.00	1980.35	338.02	-1960.57	0.00	
9024.00†	90.000	269.742	6780.00	2080.04	337.57	-2060.57	0.00	
9124.00†	90.000	269.742	6780.00	2179.72	337.12	-2160.57	0.00	
9224.00†	90.000	269.742	6780.00	2279.41	336.67	-2260.57	0.00	
9324.00†	90.000	269.742	6780.00	2379.09	336.22	-2360.57	0.00	
9424.00†	90.000	269.742	6780.00	2478.78	335.77	-2460.57	0.00	
9524.00†	90.000	269.742	6780.00	2578.46	335.32	-2560.57	0.00	
9624.00†	90.000	269.742	6780.00	2678.15	334.87	-2660.56	0.00	
9724.00†	90.000	269.742	6780.00	2777.84	334.41	-2760.56	0.00	
9824.00†	90.000	269.742	6780.00	2877.52	333.96	-2860.56	0.00	
9924.00†	90.000	269.742	6780.00	2977.21	333.51	-2960.56	0.00	
10024.00†	90.000	269.742	6780.00	3076.89	333.06	-3060.56	0.00	
10124.00†	90.000	269.742	6780.00	3176.58	332.61	-3160.56	0.00	
10224.00†	90.000	269.742	6780.00	3276.26	332.16	-3260.56	0.00	
10324.00†	90.000	269.742	6780.00	3375.95	331.71	-3360.56	0.00	
10424.00†	90.000	269.742	6780.00	3475.64	331.26	-3460.56	0.00	
10524.00†	90.000	269.742	6780.00	3575.32	330.81	-3560.56	0.00	
10624.00†	90.000	269.742	6780.00	3675.01	330.36	-3660.55	0.00	
10724.00†	90.000	269.742	6780.00	3774.69	329.90	-3760.55	0.00	
10824.00†	90.000	269.742	6780.00	3874.38	329.45	-3860.55	0.00	
10924.00†	90.000	269.742	6780.00	3974.06	329.00	-3960.55	0.00	
11024.00†	90.000	269.742	6780.00	4073.75	328.55	-4060.55	0.00	
11124.00†	90.000	269.742	6780.00	4173.43	328.10	-4160.55	0.00	
11224.00†	90.000	269.742	6780.00	4273.12	327.65	-4260.55	0.00	



Planned Wellpath Report

RANCHO WATER VALLEY 4 (REV-C.0) PWP

Page 6 of 7



REFERENCE WELLPATH IDENTIFICATION

Operator	EXTRACTION OIL & GAS	Slot	SLOT#01 RANCHO WATER VALLEY 4(587'FNL & 267'FEL,SEC.04)
Area	COLORADO	Well	RANCHO WATER VALLEY 4
Field	WELD COUNTY (NAD83/TRUE NORTH)	Wellbore	RANCHO WATER VALLEY 4 PWB
Facility	SEC.04-T05N-R67W		

WELLPATH DATA (122 stations) † = interpolated/extrapolated station

MD [ft]	Inclination [°]	Azimuth [°]	TVD [ft]	Vert Sect [ft]	North [ft]	East [ft]	DLS [°/100ft]	Comments
11324.00†	90.000	269.742	6780.00	4372.81	327.20	-4360.55	0.00	
11328.92	90.000	269.742	6780.00 ²	4377.71	327.18	-4365.46	0.00	End of Tangent

HOLE & CASING SECTIONS -

Ref Wellbore: RANCHO WATER VALLEY 4 PWB Ref Wellpath: RANCHO WATER VALLEY 4 (REV-C.0) PWP

String/Diameter	Start MD [ft]	End MD [ft]	Interval [ft]	Start TVD [ft]	End TVD [ft]	Start N/S [ft]	Start E/W [ft]	End N/S [ft]	End E/W [ft]
7in Casing Intermediate	24.00	7133.22	7109.22	24.00	6780.00	0.00	0.00	346.10	-169.81



Planned Wellpath Report

RANCHO WATER VALLEY 4 (REV-C.0) PWP

Page 7 of 7



REFERENCE WELLPATH IDENTIFICATION

Operator	EXTRACTION OIL & GAS	Slot	SLOT#01 RANCHO WATER VALLEY 4(587'FNL & 267'FEL,SEC.04)
Area	COLORADO	Well	RANCHO WATER VALLEY 4
Field	WELD COUNTY (NAD83/TRUE NORTH)	Wellbore	RANCHO WATER VALLEY 4 PWB
Facility	SEC.04-T05N-R67W		

TARGETS

Name	MD [ft]	TVD [ft]	North [ft]	East [ft]	Grid East [US ft]	Grid North [US ft]	Latitude	Longitude	Shape
RANCHO WATER VALLEY PAD N1/2 SECTION 04		0.00	-84.16	-0.56	3170351.42	1401623.60	40°26'03.282"N	104°53'16.922"W	polygon
RANCHO WATER VALLEY PAD S1/2 SECTION 33		0.00	-84.16	-0.56	3170351.42	1401623.60	40°26'03.282"N	104°53'16.922"W	polygon
2) RANCHO WATER VALLEY 4 BHL ON PLAT REV-1(240'FNL & 460'FWL,SEC.04)	11328.92	6780.00	327.18	-4365.46	3165983.95	1402004.79	40°26'07.343"N	104°54'13.370"W	point
1) RANCHO WATER VALLEY 4 LANDING	7133.22	6780.00	346.10	-169.81	3170179.21	1402052.66	40°26'07.534"N	104°53'19.111"W	point
RWV PAD N1/2 SECTION 04 HARDLINES(460'SETBACKS)		6780.00	-84.16	-0.56	3170351.42	1401623.60	40°26'03.282"N	104°53'16.922"W	polygon
RWV PAD N1/4 SECTION 04 HARDLINES(460'SETBACKS)		6780.00	-84.16	-0.56	3170351.42	1401623.60	40°26'03.282"N	104°53'16.922"W	polygon

SURVEY PROGRAM - Ref Wellbore: RANCHO WATER VALLEY 4 PWB Ref Wellpath: RANCHO WATER VALLEY 4 (REV-C.0) PWP

Start MD [ft]	End MD [ft]	Positional Uncertainty Model	Log Name/Comment	Wellbore
24.00	12000.00	NaviTrak (Standard)		RANCHO WATER VALLEY 4 PWB