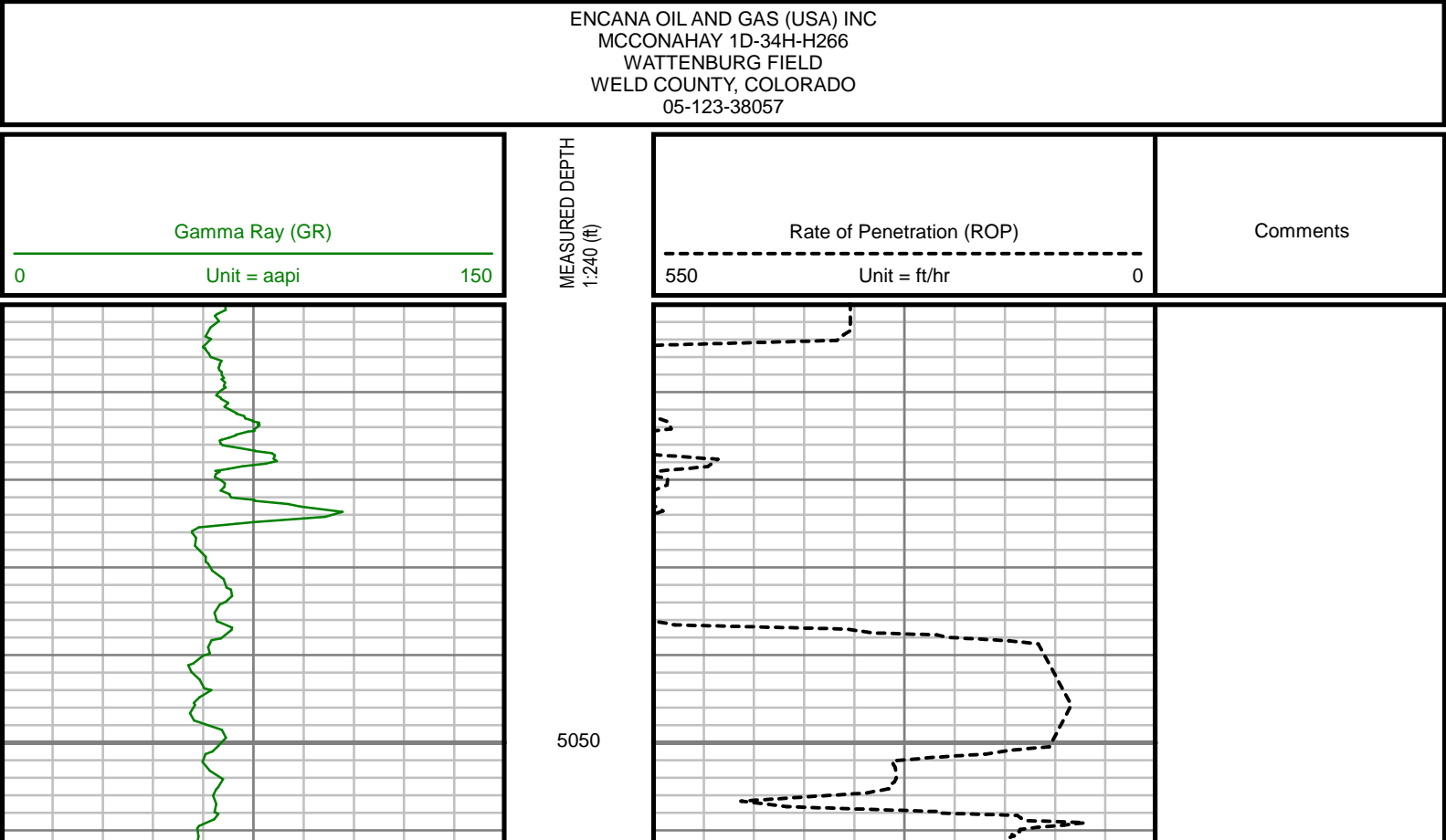
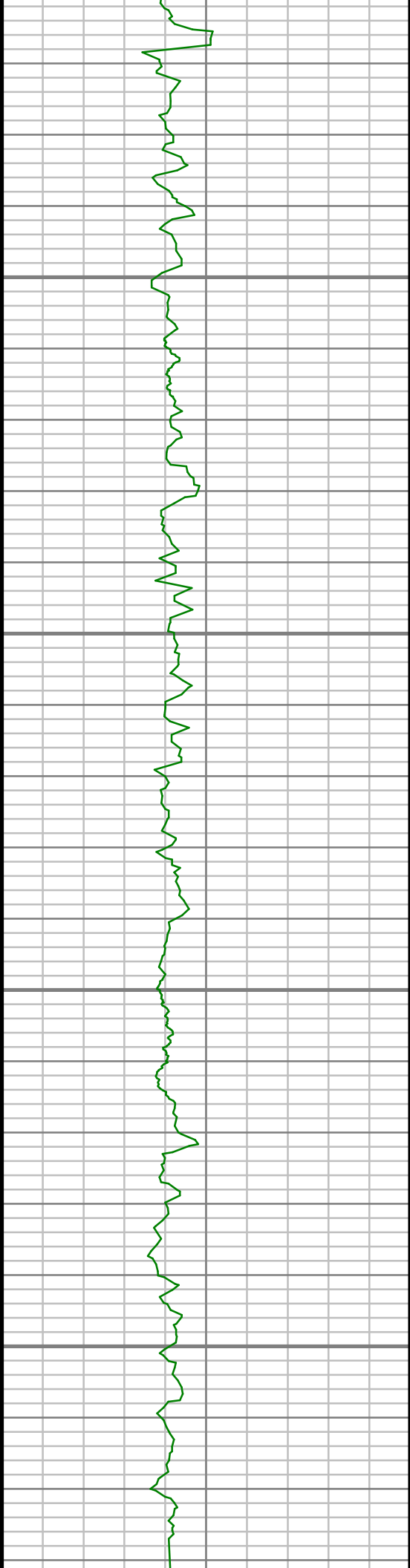


Remarks
ENCANA OIL AND GAS (USA) INC PRODUCTION AFE# 13178298
SCIENTIFIC DRILLING INTERNATIONAL JOB# 129593
ALL REFERENCES IN THE DEPTH TRACK ARE AT BIT DEPTH.
ALL DATA IS MEMORY DATA UNLESS STATED OTHERWISE.
FLAT AVERAGE FILTER OF 1.00 FT APPLIED TO GAMMA RAY CURVE
FLAT AVERAGE FILTER OF 1.00 FT APPLIED TO RATE OF PENETRATION CURVE
RUN #1: MWD / DIRECTIONAL RUN
SENSORS S/N: CONT = 814 / MWD EYE = 0932
BIT TO SENSOR OFFSET: SURVEY = 59.07 FT.
RUN #2: MWD / GAMMA RAY LOGGING RUN
SENSORS S/N: PULSER = 128-133 / CONT = 831 / MWD EYE = 0932 / GAMMA RAY = 1074
BIT TO SENSOR OFFSETS: SURVEY = 66.28 FT. / GAMMA RAY = 53.03 FT.
RUN #3: MWD / GAMMA RAY LOGGING RUN
SENSORS S/N: PULSER = 78-097 / CONT = 114 / MWD EYE = 0862 / GAMMA RAY = 1050
BIT TO SENSOR OFFSETS: SURVEY = 65.02 FT. / GAMMA RAY = 51.77 FT.
MNEMONICS LIST:
GR = GAMMA RAY
ROP = RATE OF PENETRATION

All interpretations are opinions based on inferences from electrical or other measurements and we cannot, and do not guarantee the accuracy or correctness of any interpretations, and we shall not, except in the case of gross or willful negligence on our part, be liable or responsible for any loss, costs, damages or expenses incurred or sustained by anyone resulting from any interpretation made by any of our officers, agents or employees. These interpretations are also subject to our general terms and conditions as set out in our current price schedule.



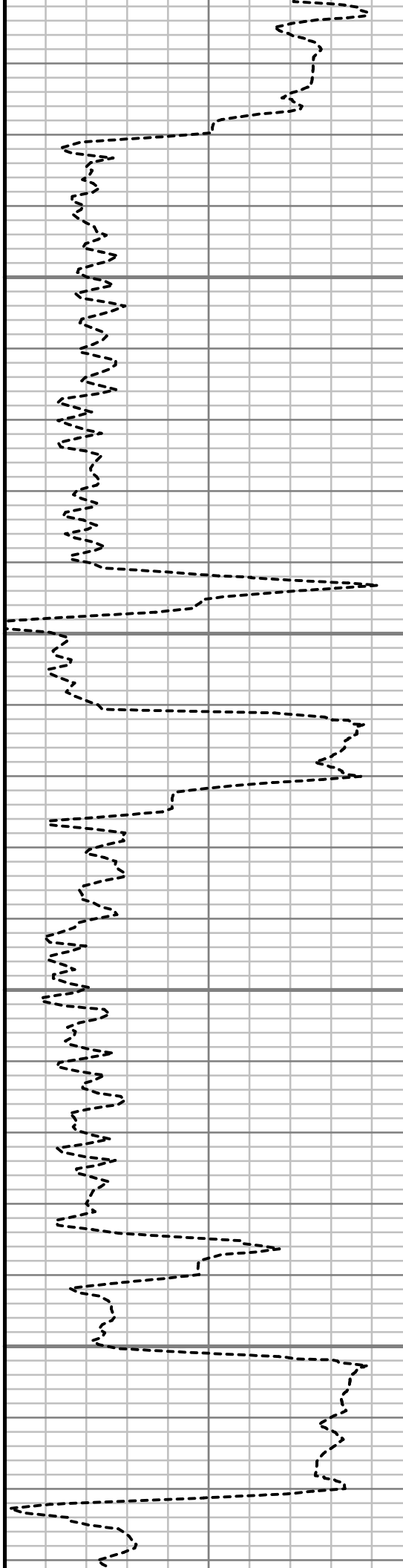


5100

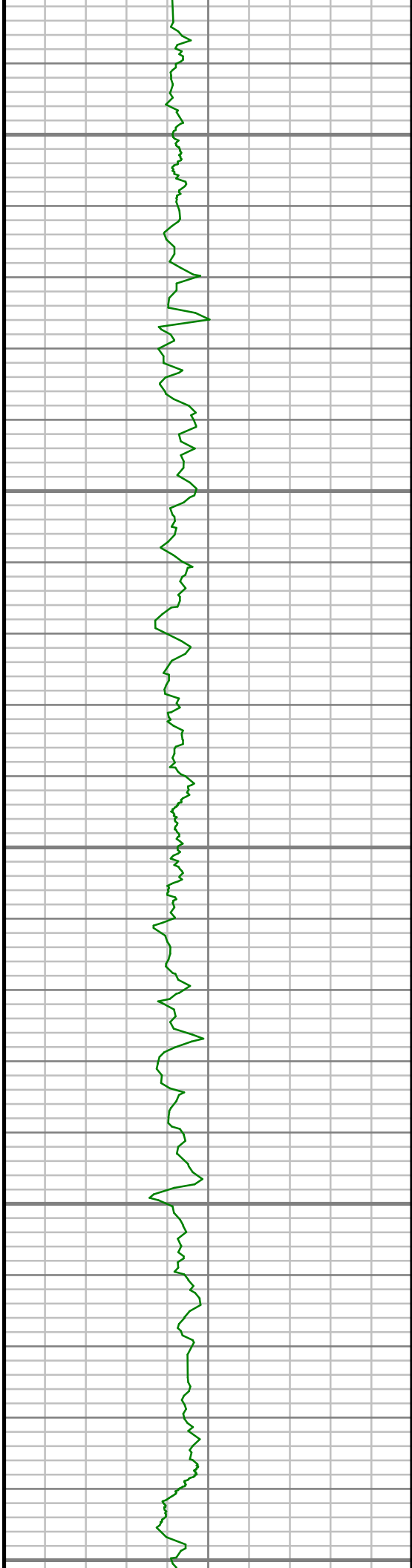
5150

5200

5250



S: 30 MD: 5171.00 ft Inc: 15.57
deg Az: 155.02 deg TVD:
5006.43 ft



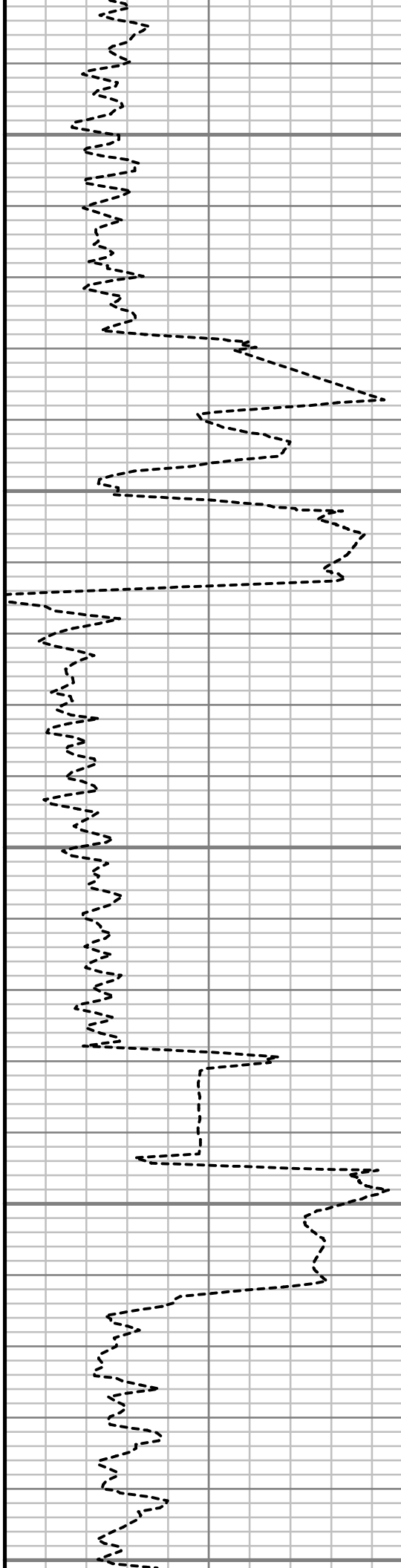
5300

5350

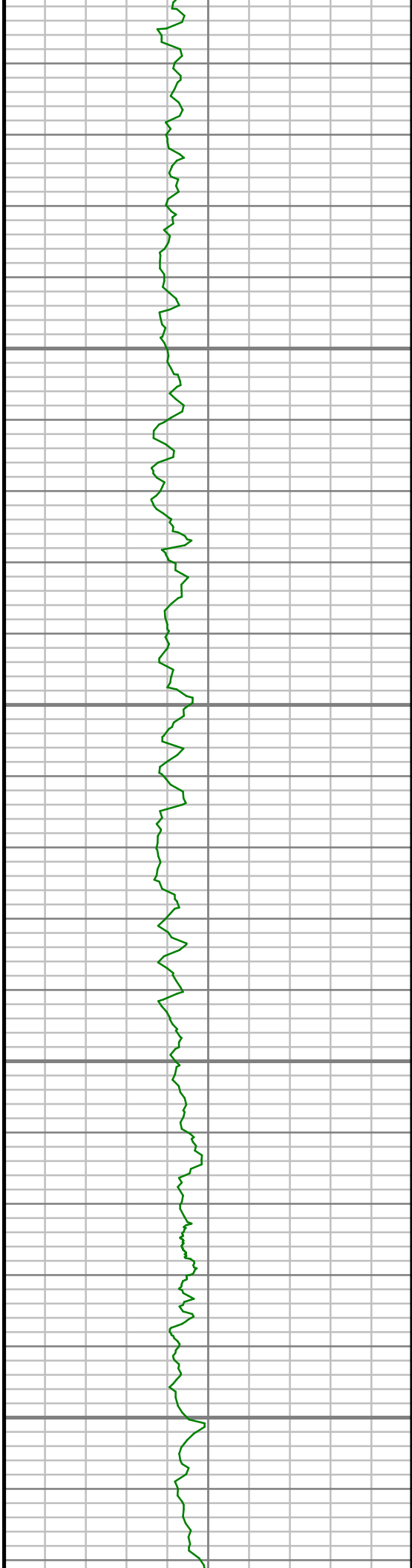
5400

5450

5500



S: 31 MD: 5362.00 ft Inc: 15.20
deg Az: 161.67 deg TVD:
5190.60 ft

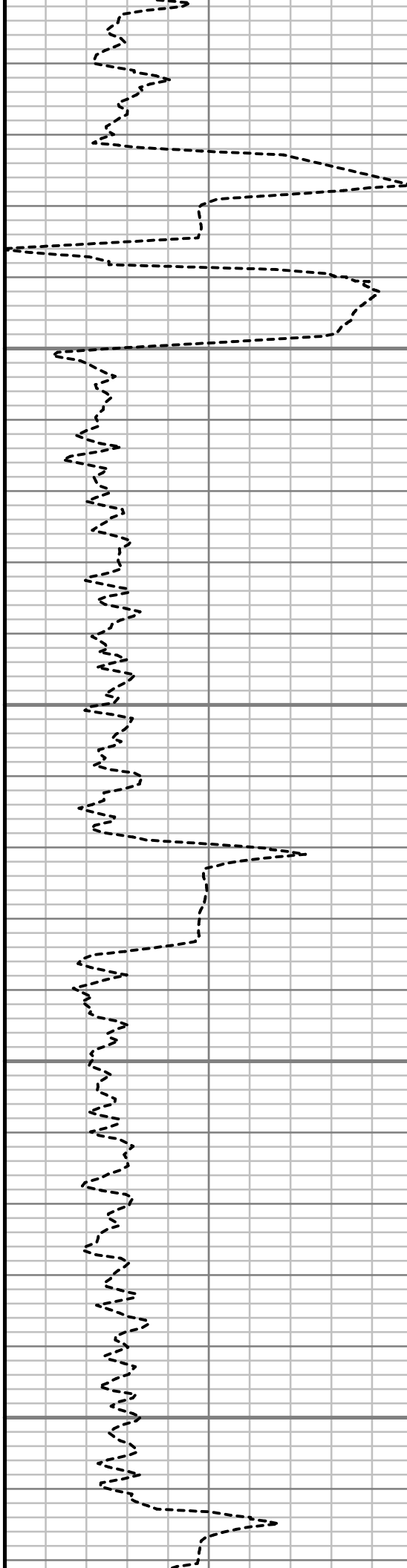


5550

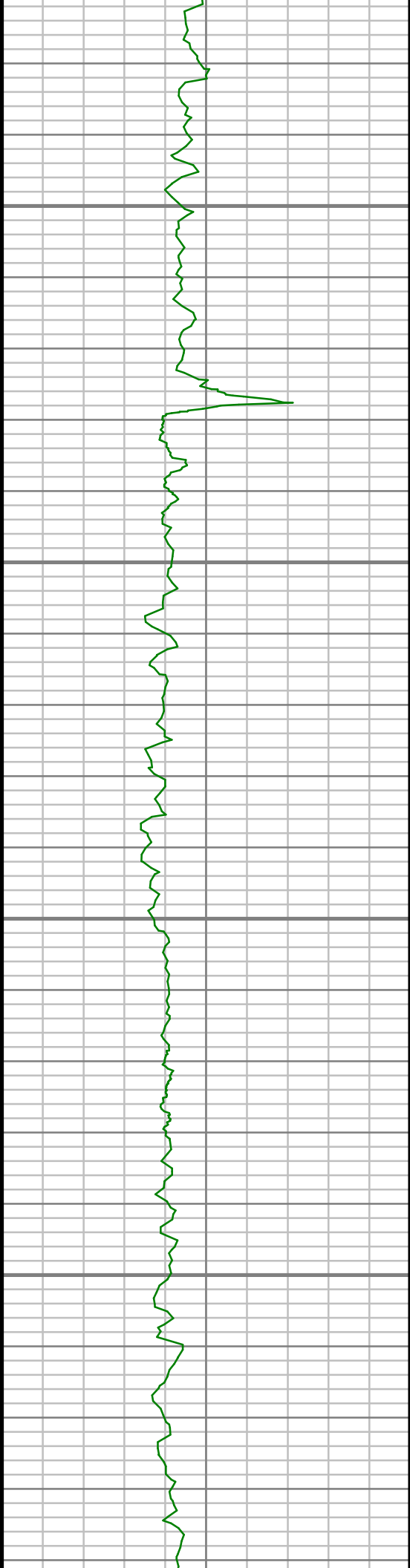
5600

5650

5700



S: 32 MD: 5552.00 ft Inc: 16.19
deg Az: 163.71 deg TVD:
5373.51 ft

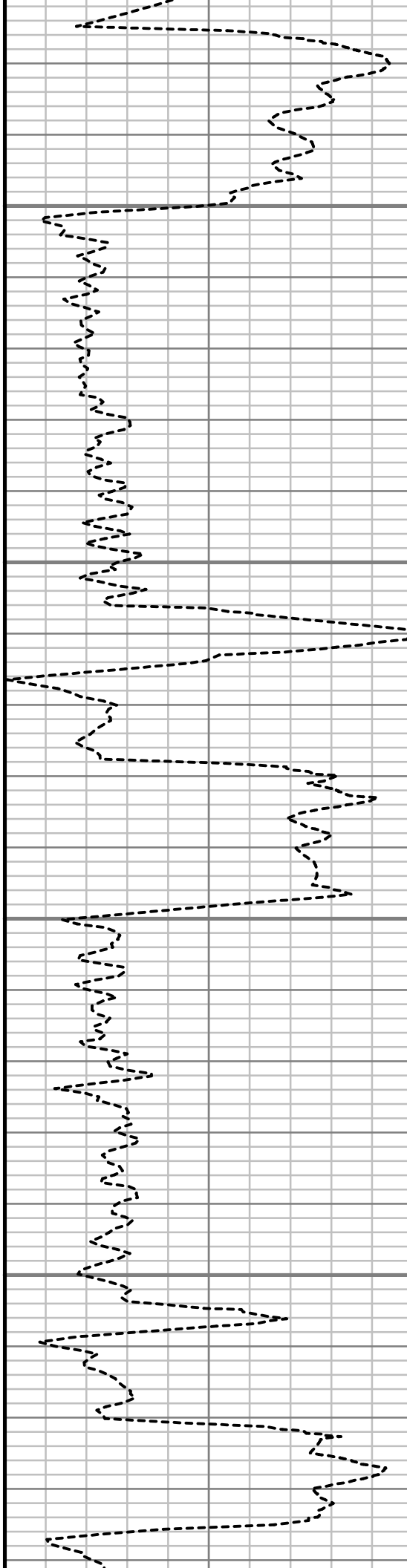


5750

5800

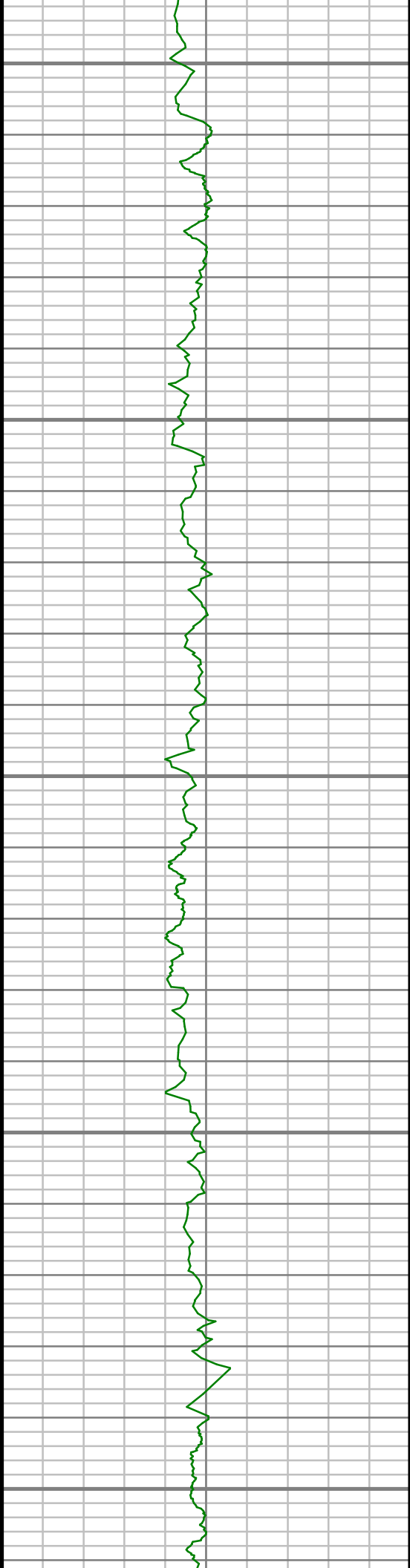
5850

5900



S: 33 MD: 5744.00 ft Inc: 12.94
deg Az: 163.76 deg TVD:
5559.32 ft

S: 34 MD: 5934.00 ft Inc: 12.14
deg Az: 161.30 deg TVD:
5744.79 ft



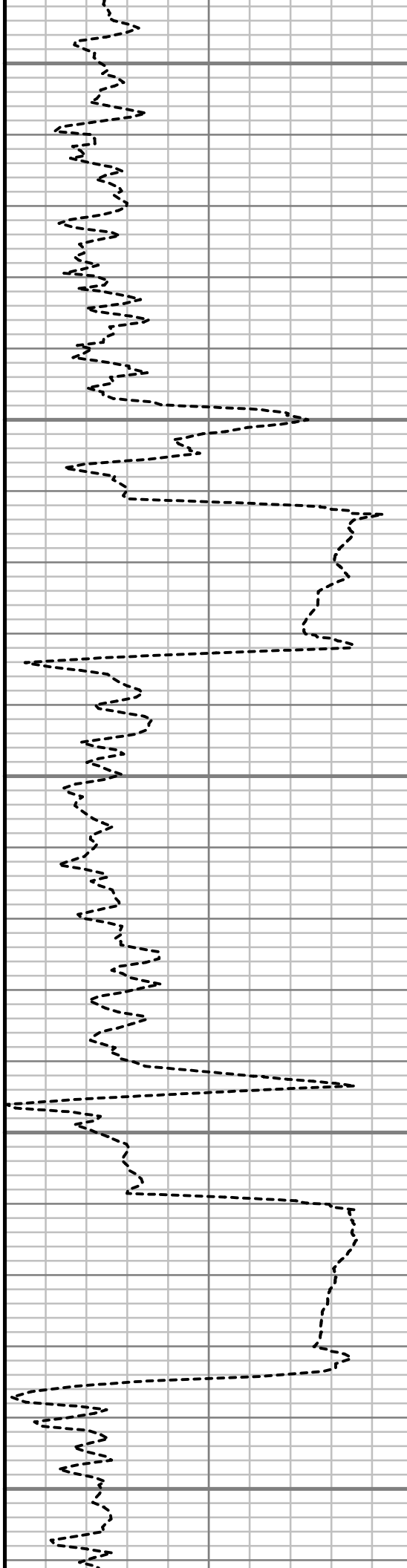
5950

6000

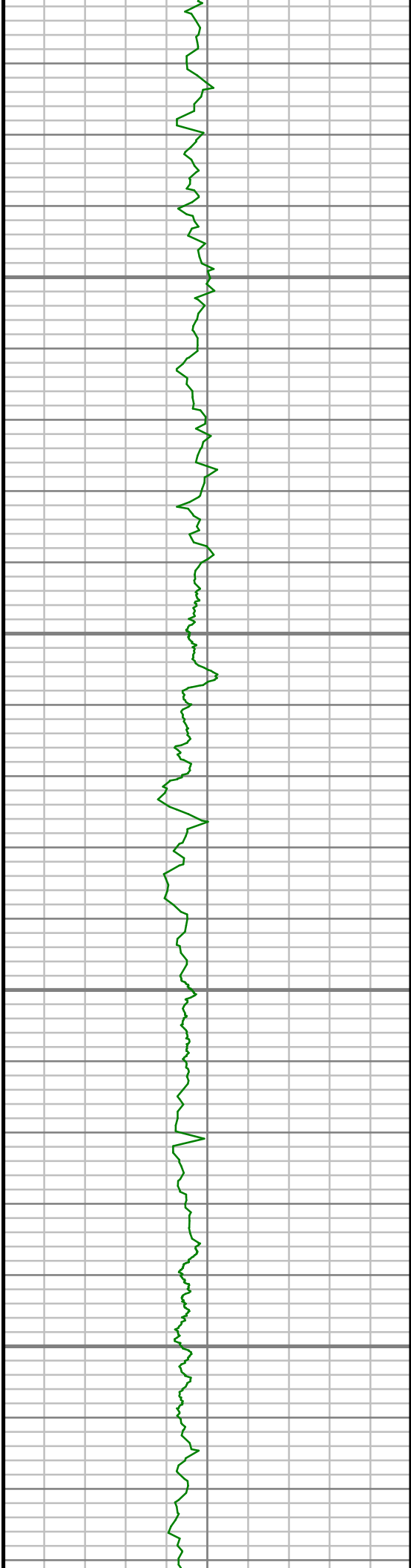
6050

6100

6150



S: 35 MD: 6125.00 ft Inc: 11.85
deg Az: 165.10 deg TVD:
5931.62 ft

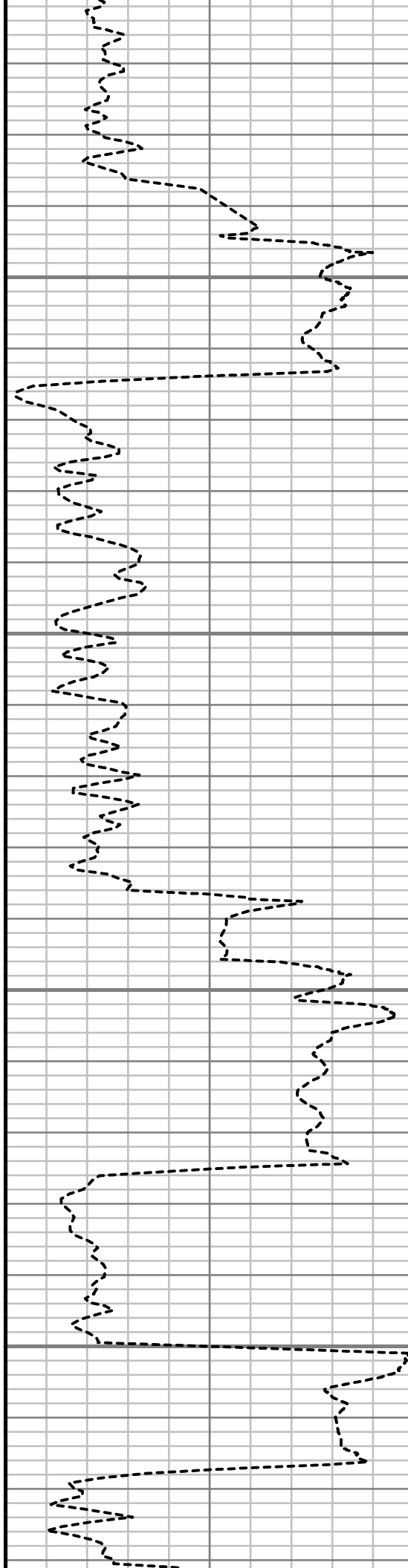


6200

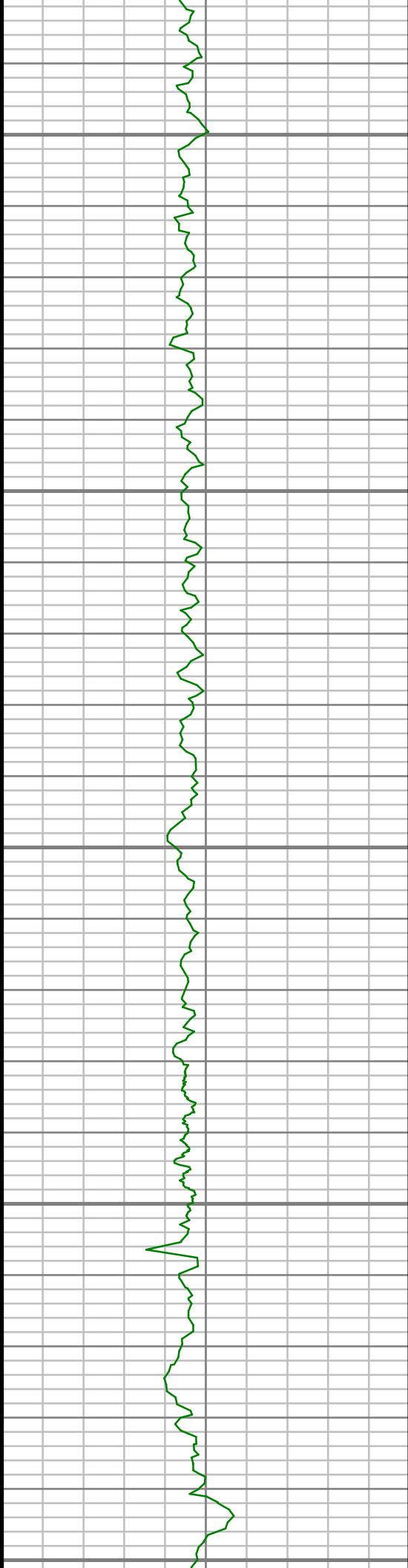
6250

6300

6350



S: 36 MD: 6315.00 ft Inc: 11.27
deg Az: 158.18 deg TVD:
6117.77 ft



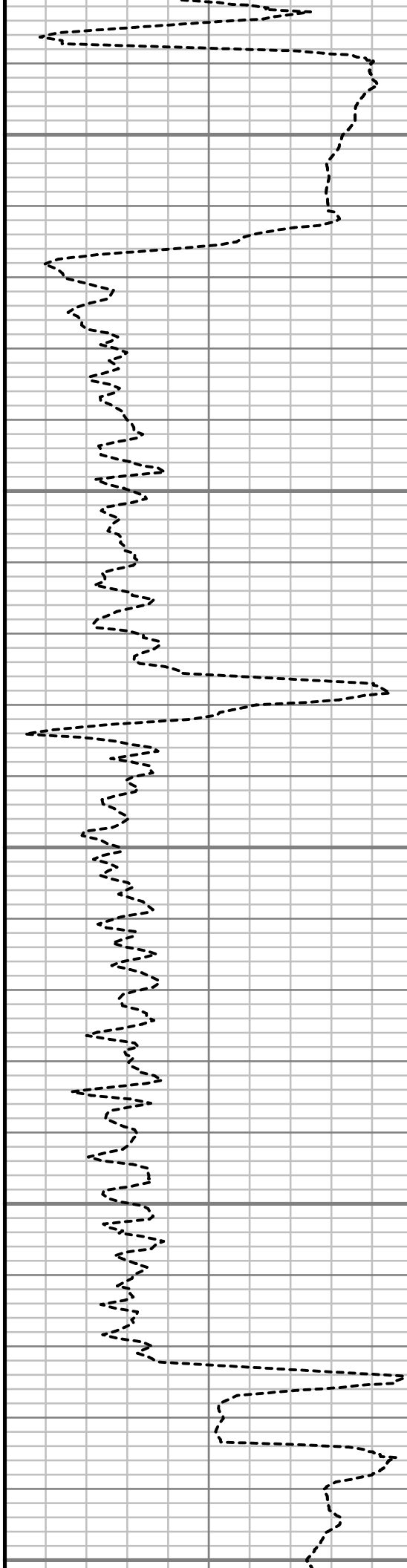
6400

6450

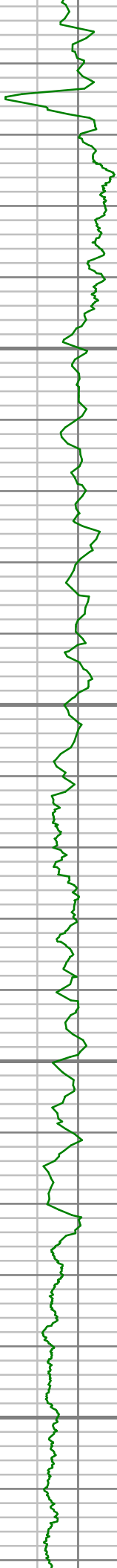
6500

6550

6600



S: 37 MD: 6506.00 ft Inc: 12.82
deg Az: 157.79 deg TVD:
6304.56 ft

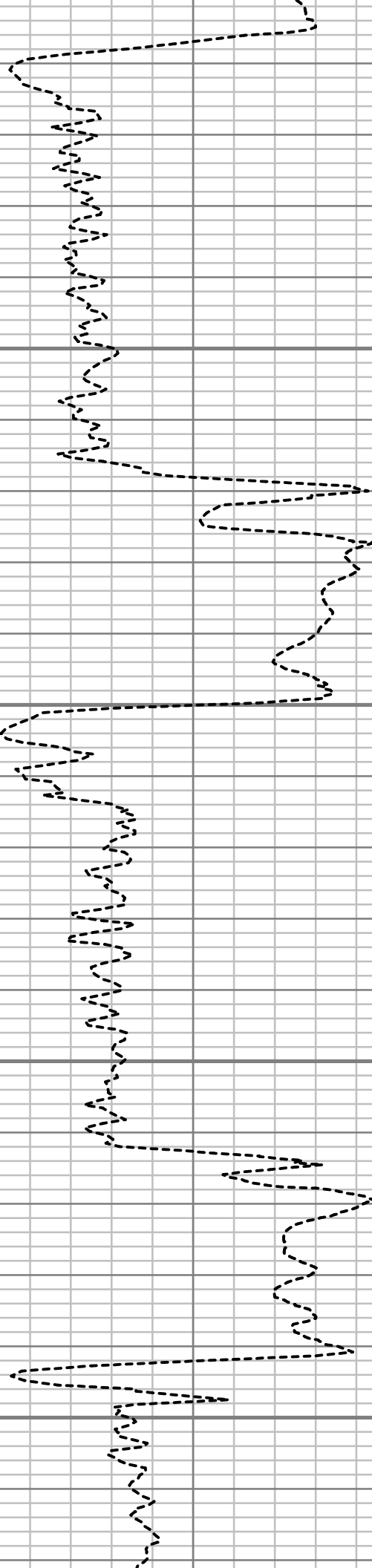


6650

6700

6750

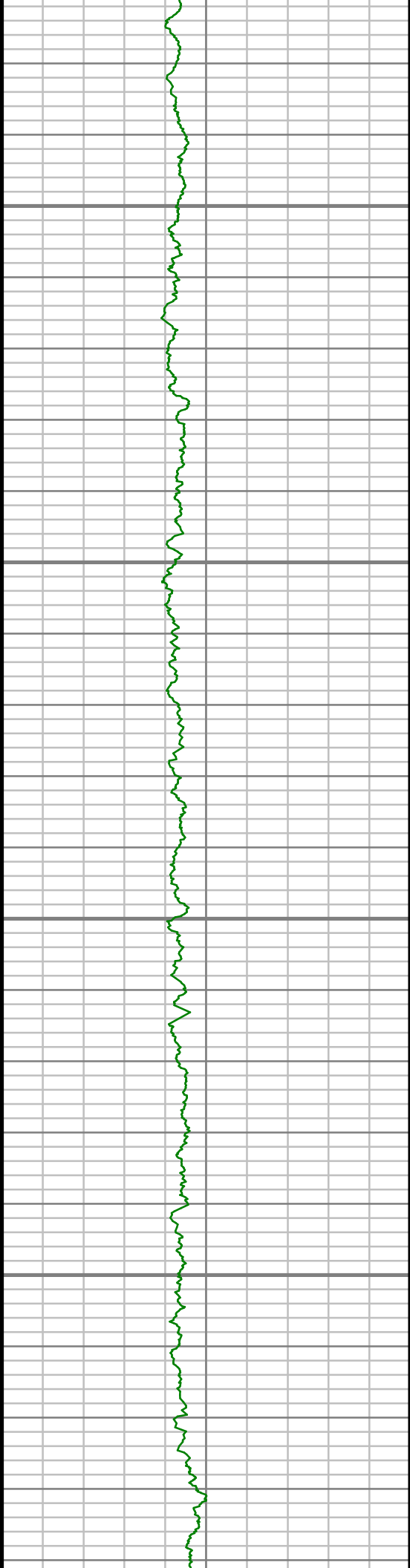
6800



S: 38 MD: 6696.00 ft Inc: 12.42
deg Az: 158.40 deg TVD:
6489.98 ft

S: 39 MD: 6760.00 ft Inc: 9.89
deg Az: 158.39 deg TVD:
6552.76 ft

S: 40 MD: 6791.00 ft Inc: 10.60
deg Az: 163.38 deg TVD:
6583.27 ft

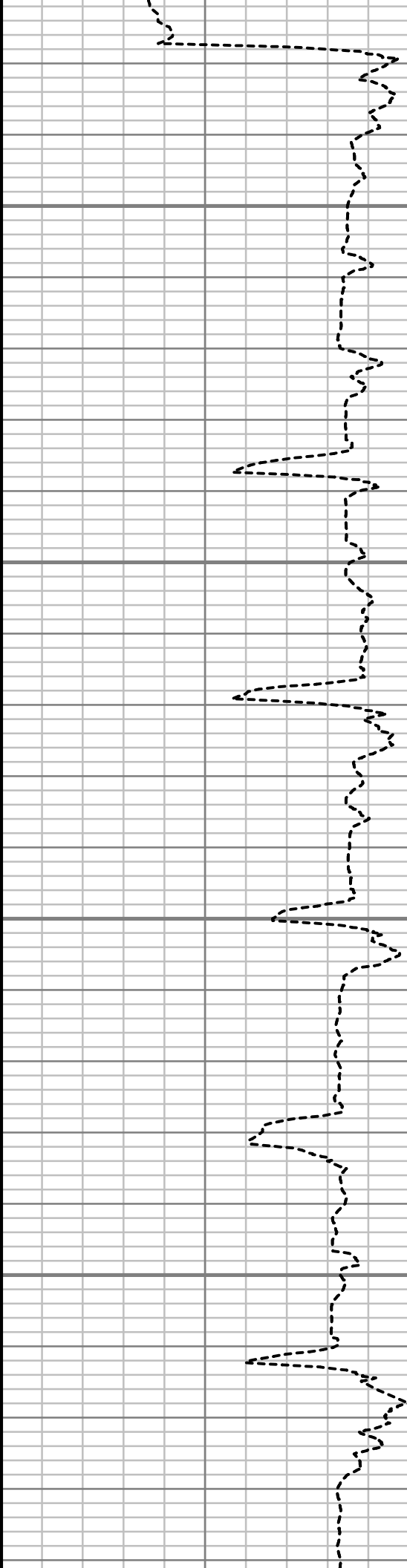


6850

6900

6950

7000



S: 41 MD: 6823.00 ft Inc: 10.45
deg Az: 165.36 deg TVD:
6614.73 ft

S: 42 MD: 6855.00 ft Inc: 9.12
deg Az: 177.88 deg TVD:
6646.27 ft

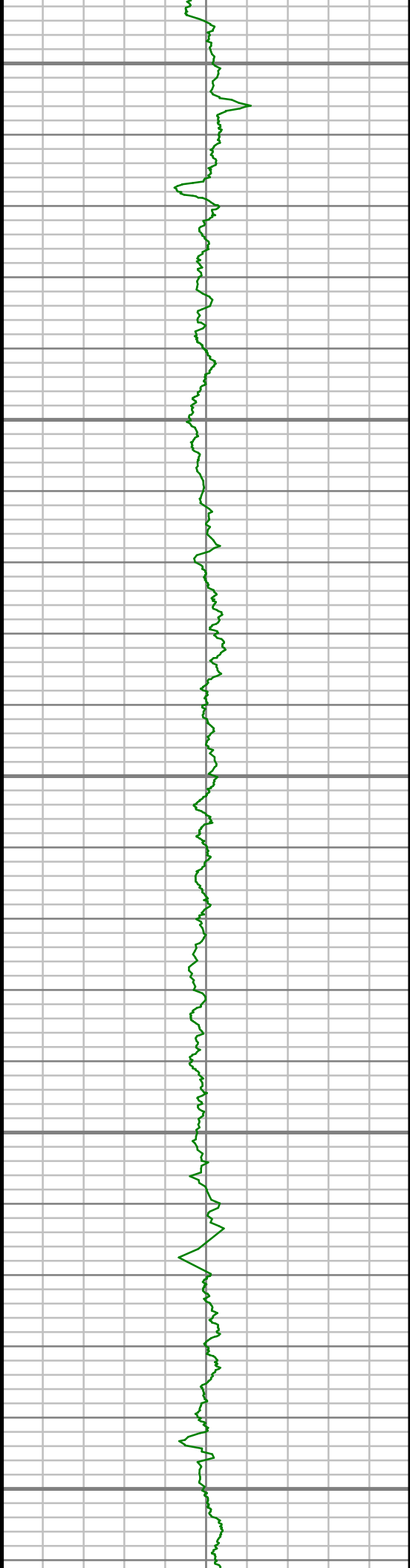
S: 43 MD: 6887.00 ft Inc: 8.44
deg Az: 199.48 deg TVD:
6677.90 ft

S: 44 MD: 6918.00 ft Inc: 9.55
deg Az: 210.43 deg TVD:
6708.52 ft

S: 45 MD: 6950.00 ft Inc: 11.94
deg Az: 220.59 deg TVD:
6739.96 ft

S: 46 MD: 6982.00 ft Inc: 14.65
deg Az: 228.45 deg TVD:
6771.10 ft

S: 47 MD: 7013.00 ft Inc: 17.17
deg Az: 236.15 deg TVD:
6800.92 ft



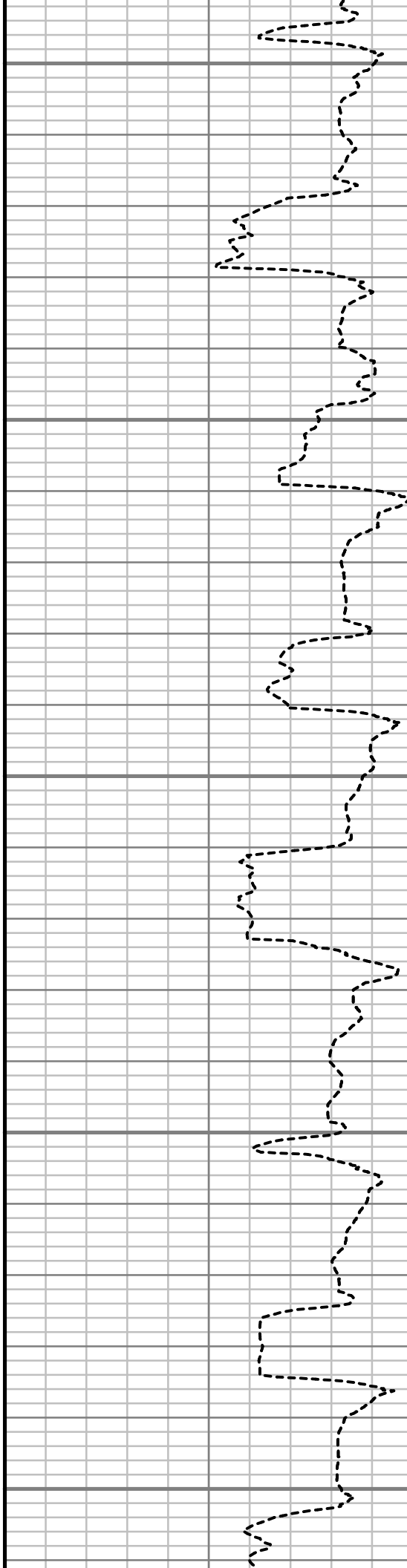
7050

7100

7150

7200

7250



S: 48 MD: 7045.00 ft Inc: 19.72
deg Az: 243.56 deg TVD:
6831.27 ft

S: 49 MD: 7077.00 ft Inc: 21.42
deg Az: 249.11 deg TVD:
6861.24 ft

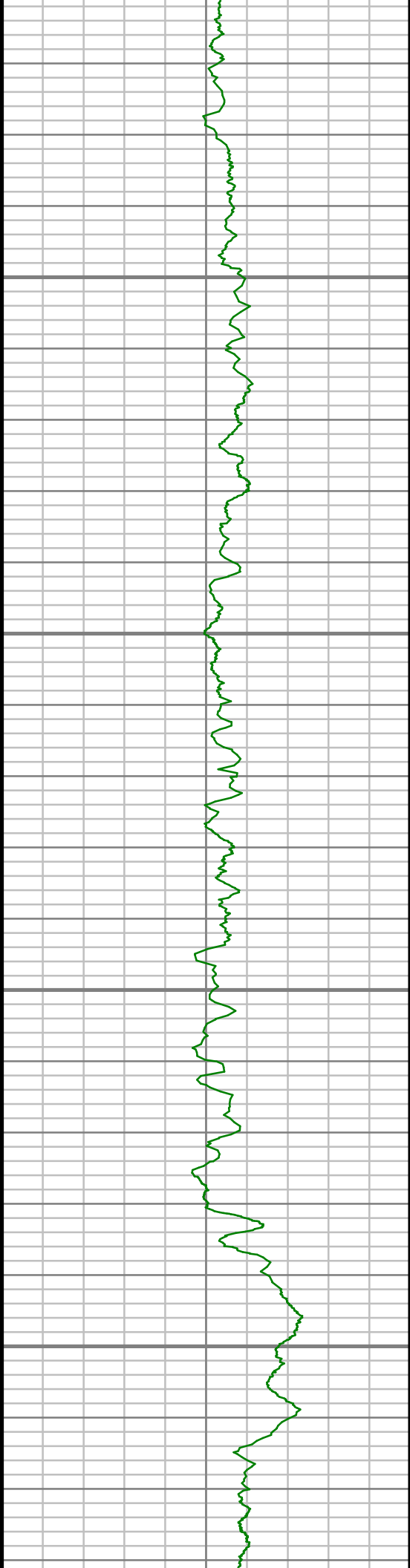
S: 50 MD: 7109.00 ft Inc: 23.16
deg Az: 249.97 deg TVD:
6890.84 ft

S: 51 MD: 7141.00 ft Inc: 25.27
deg Az: 249.50 deg TVD:
6920.03 ft

S: 52 MD: 7172.00 ft Inc: 26.71
deg Az: 249.15 deg TVD:
6947.89 ft

S: 53 MD: 7204.00 ft Inc: 29.08
deg Az: 249.03 deg TVD:
6976.17 ft

S: 54 MD: 7236.00 ft Inc: 31.54
deg Az: 249.46 deg TVD:
7003.79 ft

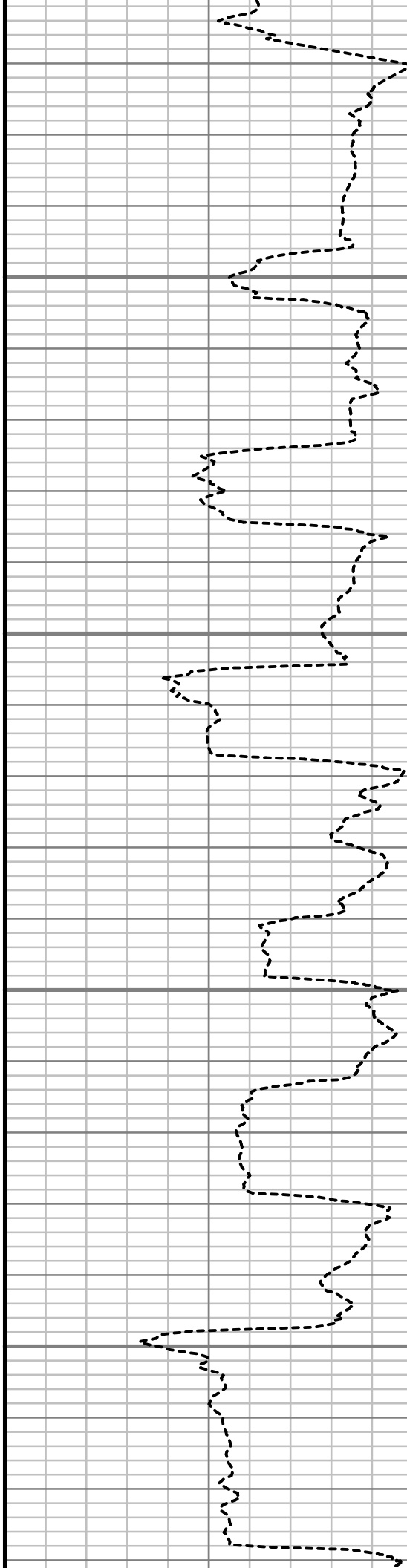


7300

7350

7400

7450



S: 55 MD: 7268.00 ft Inc: 34.08
deg Az: 248.78 deg TVD:
7030.69 ft

S: 56 MD: 7299.00 ft Inc: 37.34
deg Az: 248.99 deg TVD:
7055.86 ft

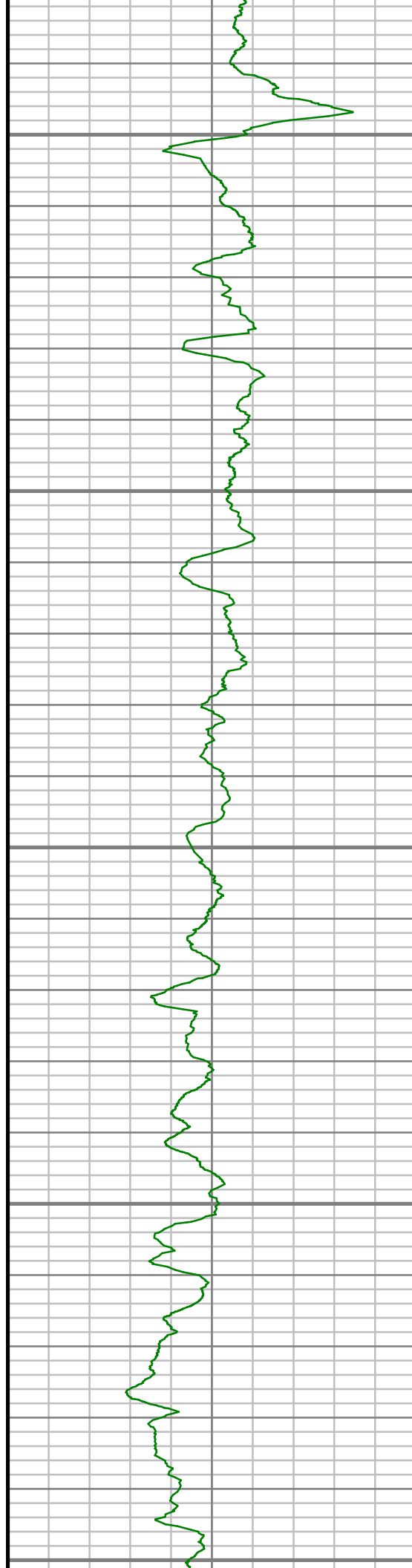
S: 57 MD: 7331.00 ft Inc: 40.14
deg Az: 249.32 deg TVD:
7080.81 ft

S: 58 MD: 7363.00 ft Inc: 42.26
deg Az: 249.50 deg TVD:
7104.89 ft

S: 59 MD: 7395.00 ft Inc: 43.76
deg Az: 248.35 deg TVD:
7128.29 ft

S: 60 MD: 7427.00 ft Inc: 45.83
deg Az: 246.76 deg TVD:
7151.00 ft

S: 61 MD: 7459.00 ft Inc: 47.41
deg Az: 246.57 deg TVD:
7172.97 ft



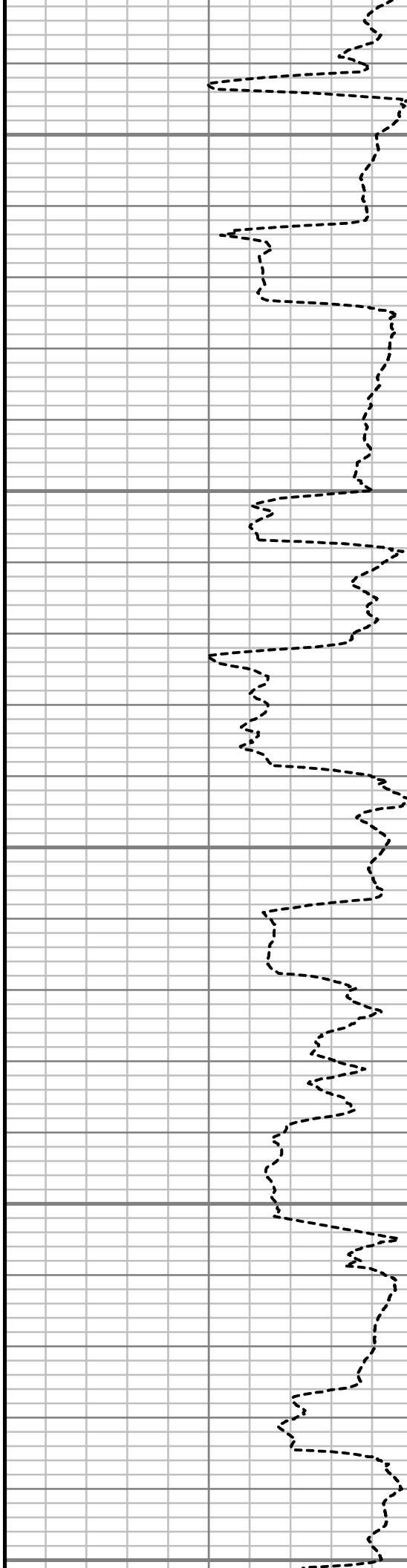
7500

7550

7600

7650

7700



S: 62 MD: 7490.00 ft Inc: 49.40
deg Az: 247.67 deg TVD:
7193.55 ft

S: 63 MD: 7522.00 ft Inc: 52.31
deg Az: 249.13 deg TVD:
7213.75 ft

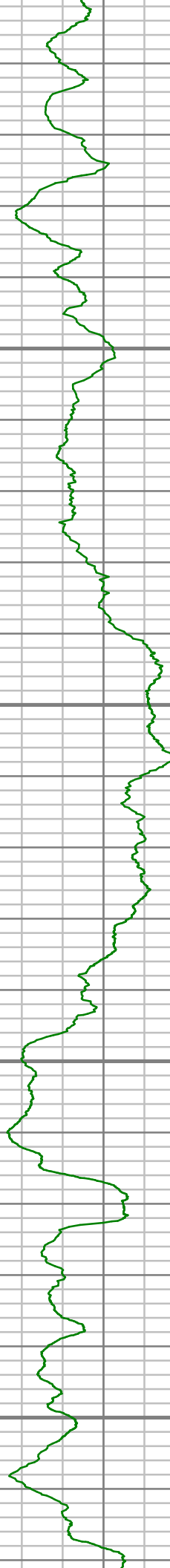
S: 64 MD: 7554.00 ft Inc: 55.62
deg Az: 250.68 deg TVD:
7232.57 ft

S: 65 MD: 7586.00 ft Inc: 58.17
deg Az: 252.02 deg TVD:
7250.05 ft

S: 66 MD: 7617.00 ft Inc: 60.53
deg Az: 253.15 deg TVD:
7265.85 ft

S: 67 MD: 7649.00 ft Inc: 62.37
deg Az: 254.48 deg TVD:
7281.14 ft

S: 68 MD: 7681.00 ft Inc: 64.95
deg Az: 257.11 deg TVD:
7295.34 ft

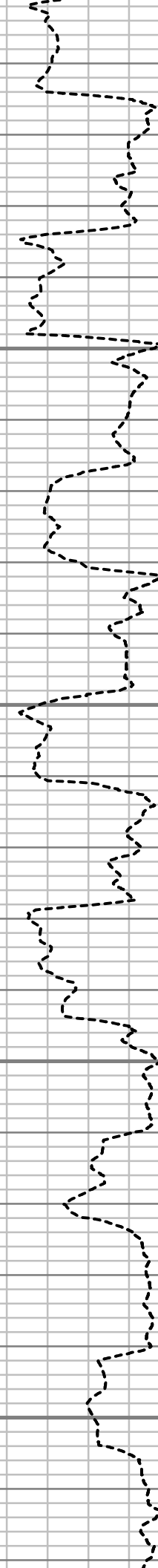


7750

7800

7850

7900



S: 69 MD: 7713.00 ft Inc: 66.86
deg Az: 259.73 deg TVD:
7308.41 ft

S: 70 MD: 7744.00 ft Inc: 68.90
deg Az: 261.52 deg TVD:
7320.08 ft

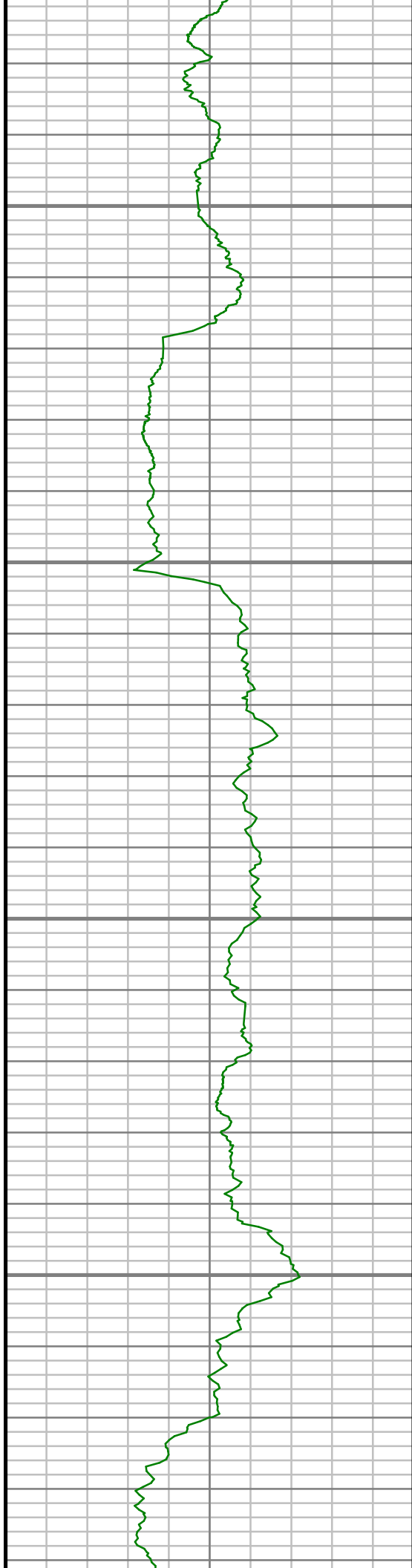
S: 71 MD: 7776.00 ft Inc: 71.28
deg Az: 263.11 deg TVD:
7330.98 ft

S: 72 MD: 7808.00 ft Inc: 74.05
deg Az: 264.69 deg TVD:
7340.51 ft

S: 73 MD: 7840.00 ft Inc: 76.11
deg Az: 265.16 deg TVD:
7348.75 ft

S: 74 MD: 7871.00 ft Inc: 78.40
deg Az: 265.53 deg TVD:
7355.59 ft

S: 75 MD: 7903.00 ft Inc: 81.58
deg Az: 265.57 deg TVD:
7361.15 ft

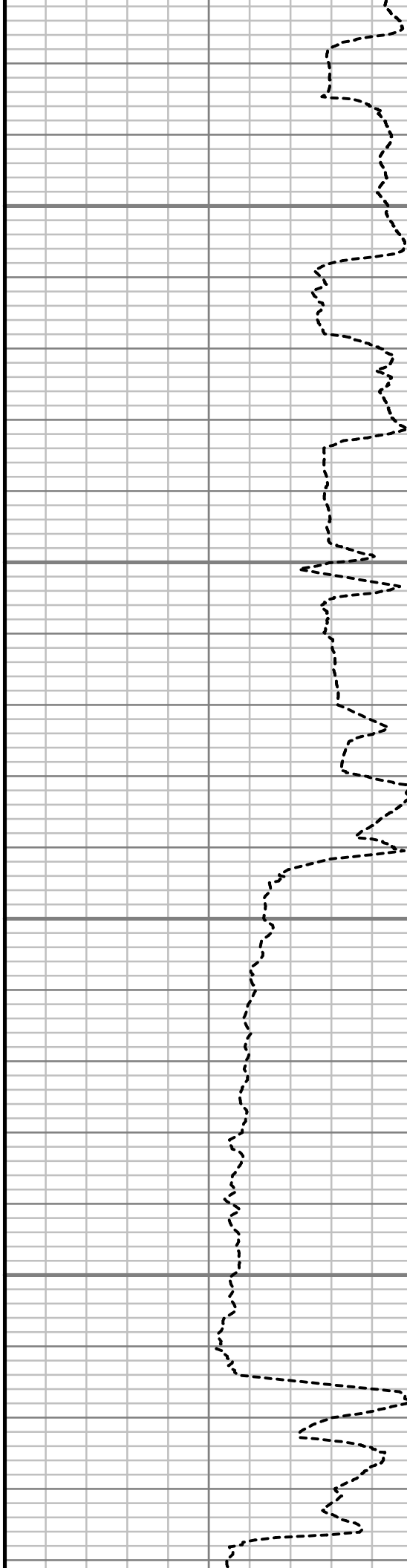


7950

8000

8050

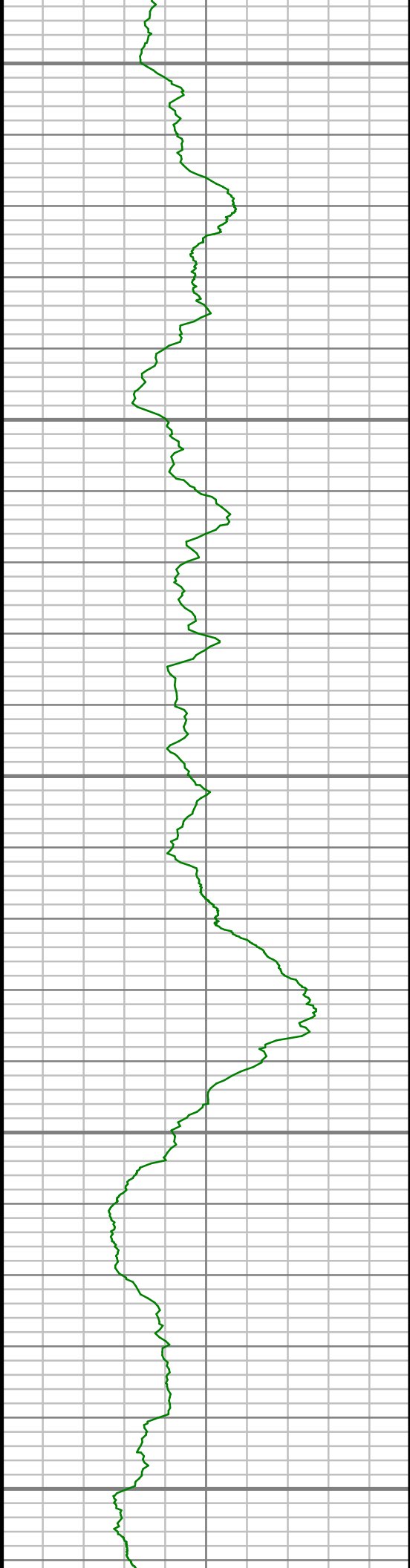
8100



S: 76 MD: 7935.00 ft Inc: 84.86
deg Az: 264.74 deg TVD:
7364.93 ft

S: 77 MD: 7952.00 ft Inc: 86.81
deg Az: 264.49 deg TVD:
7366.17 ft

S: 78 MD: 8051.00 ft Inc: 91.21
deg Az: 263.77 deg TVD:
7367.88 ft



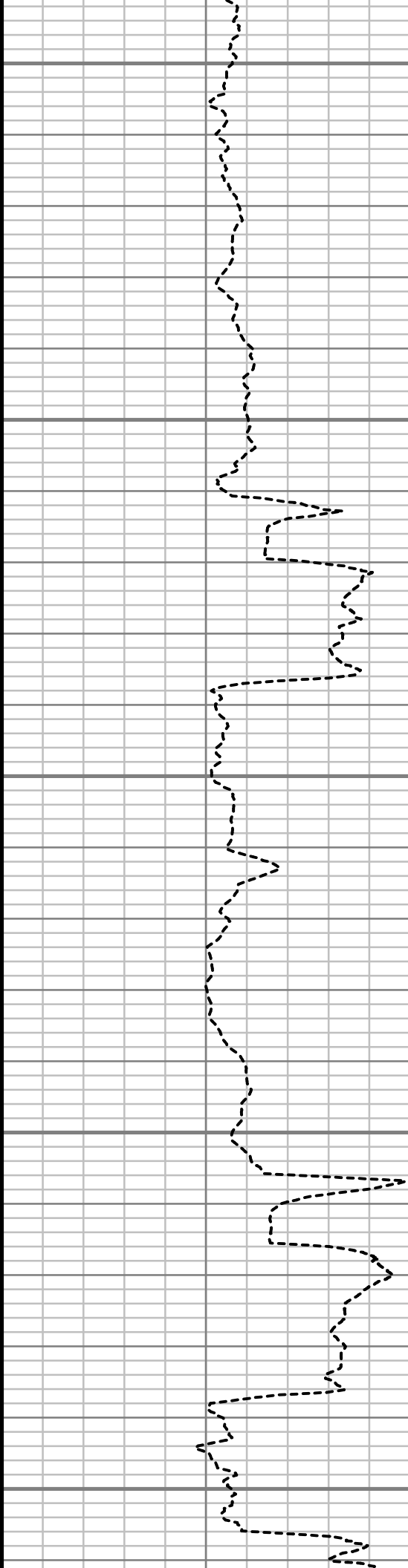
8150

8200

8250

8300

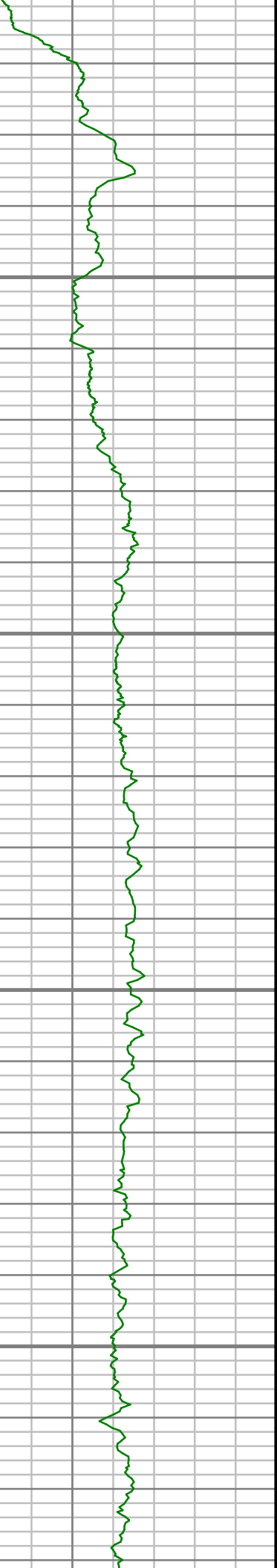
8350



S: 79 MD: 8146.00 ft Inc: 91.51
deg Az: 264.21 deg TVD:
7365.62 ft

S: 80 MD: 8241.00 ft Inc: 91.45
deg Az: 264.46 deg TVD:
7363.17 ft

S: 81 MD: 8337.00 ft Inc: 91.72
deg Az: 265.99 deg TVD:
7360.52 ft



8400

8450

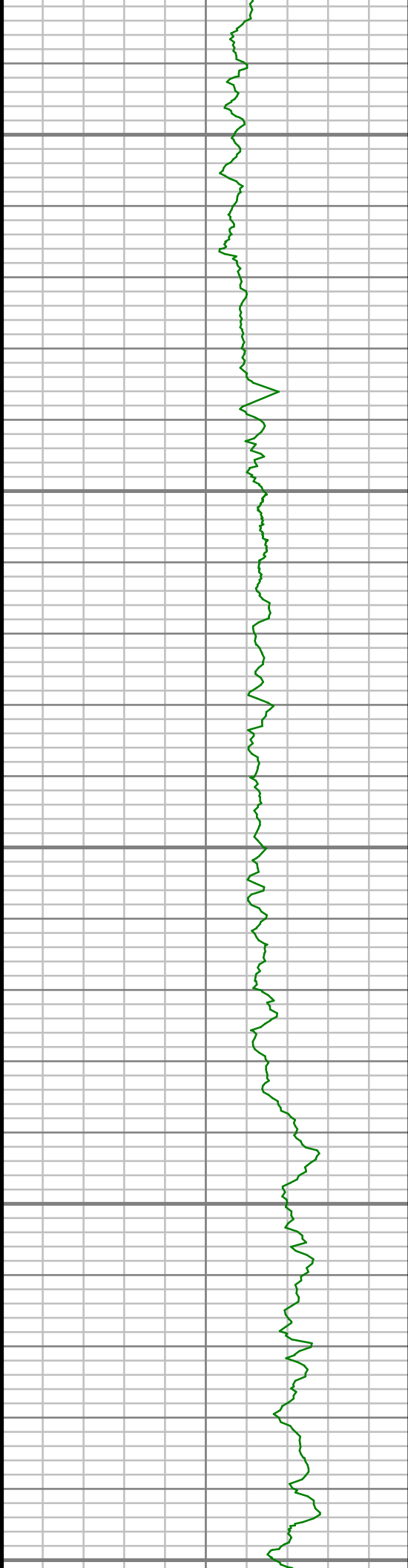
8500

8550



S: 82 MD: 8432.00 ft Inc: 90.07
deg Az: 267.47 deg TVD:
7359.04 ft

S: 83 MD: 8527.00 ft Inc: 88.59
deg Az: 269.78 deg TVD:
7360.16 ft



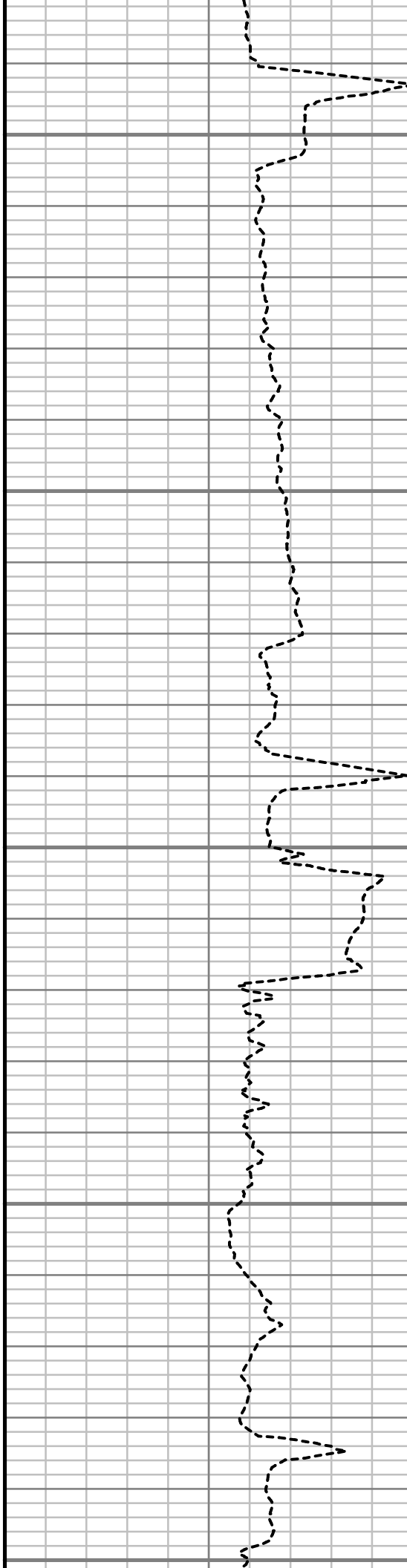
8600

8650

8700

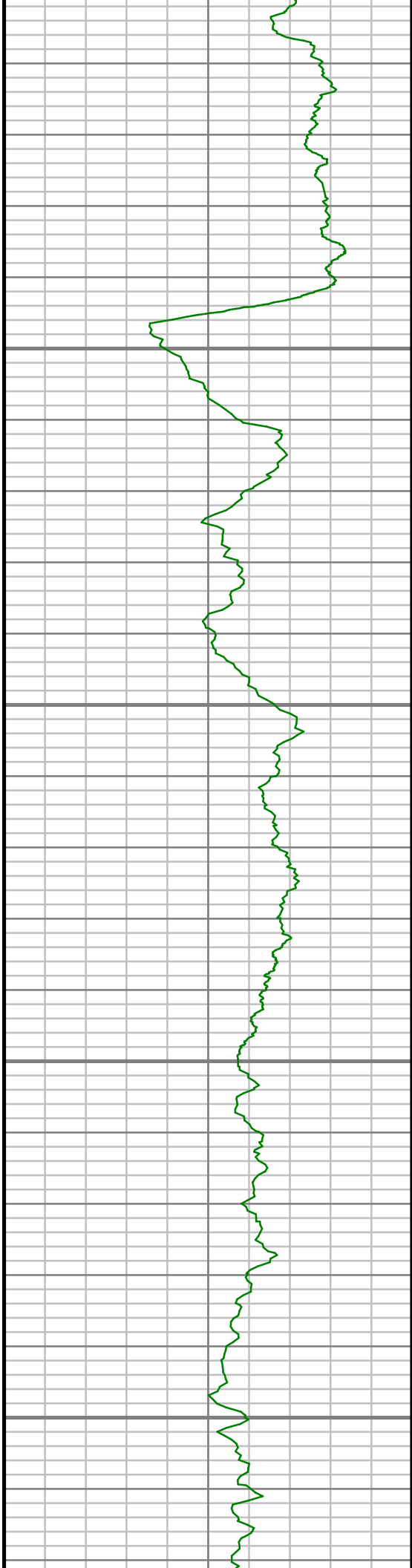
8750

8800



S: 84 MD: 8623.00 ft Inc: 89.60
deg Az: 269.42 deg TVD:
7361.68 ft

S: 85 MD: 8718.00 ft Inc: 88.39
deg Az: 270.24 deg TVD:
7363.35 ft

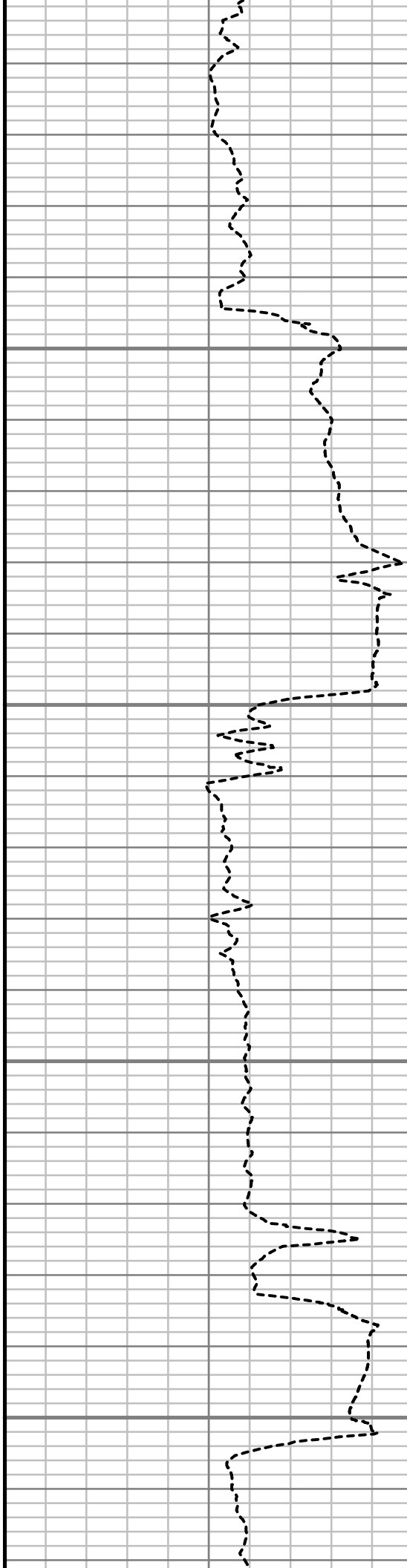


8850

8900

8950

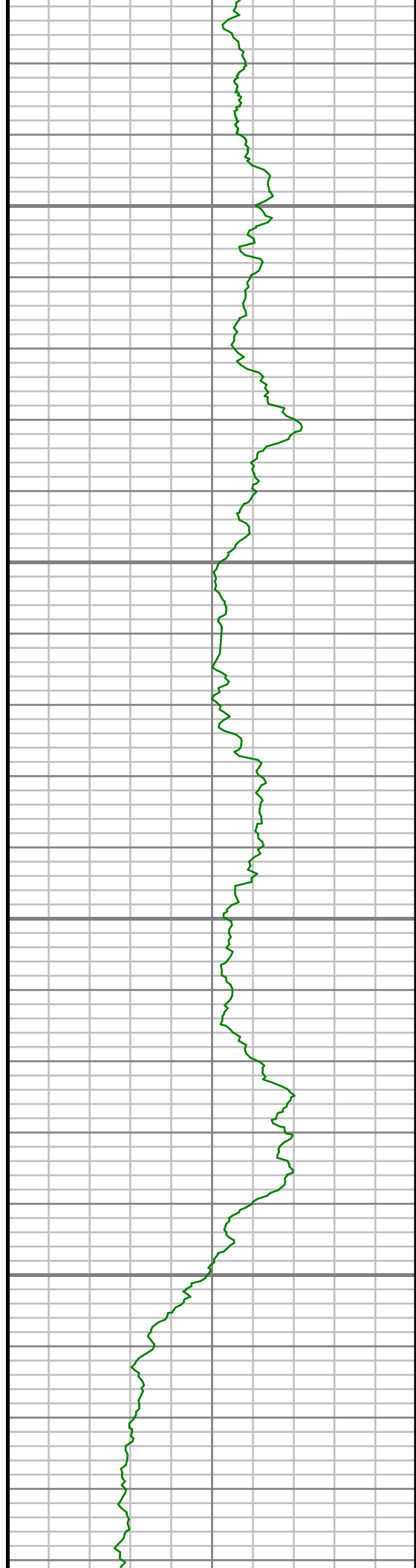
9000



S: 86 MD: 8813.00 ft Inc: 88.69
deg Az: 269.85 deg TVD:
7365.78 ft

S: 87 MD: 8908.00 ft Inc: 90.00
deg Az: 270.25 deg TVD:
7366.86 ft

S: 88 MD: 9004.00 ft Inc: 89.50
deg Az: 270.96 deg TVD:
7367.29 ft

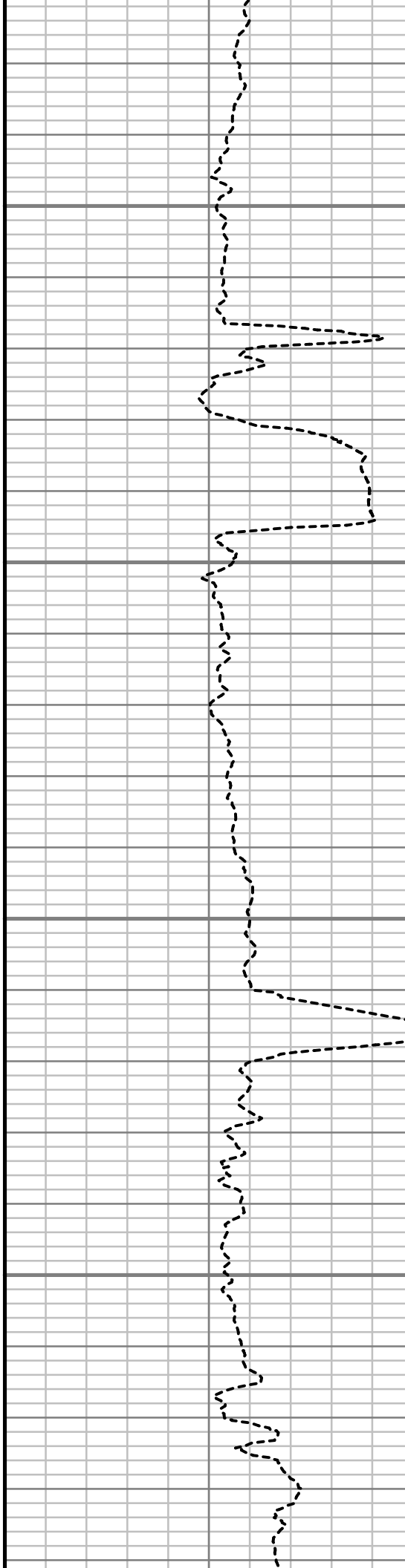


9050

9100

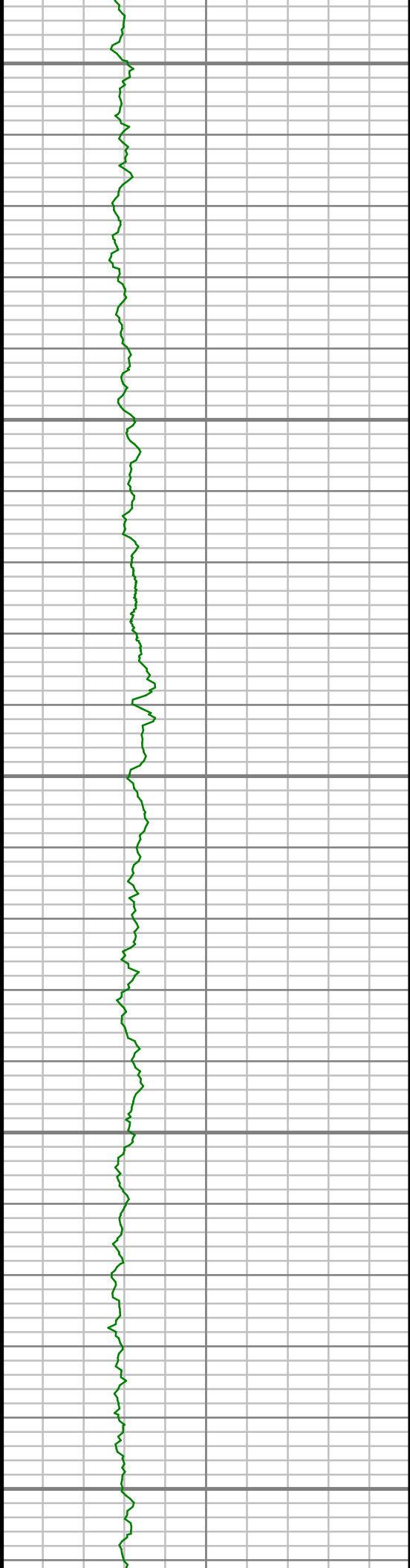
9150

9200



S: 89 MD: 9099.00 ft Inc: 88.65
deg Az: 271.53 deg TVD:
7368.82 ft

S: 90 MD: 9194.00 ft Inc: 88.39
deg Az: 271.40 deg TVD:
7371.28 ft



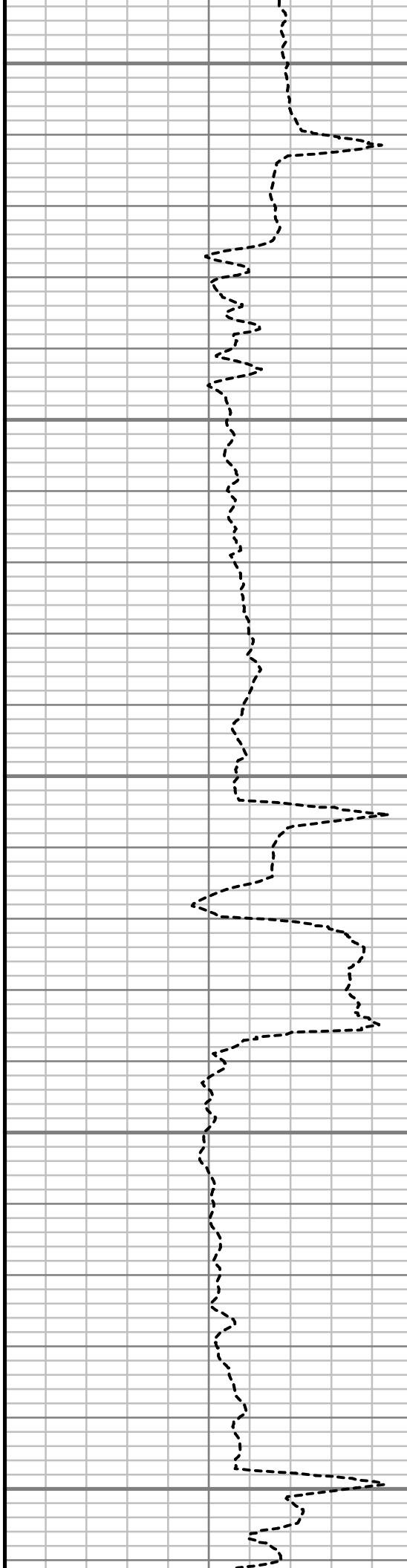
9250

9300

9350

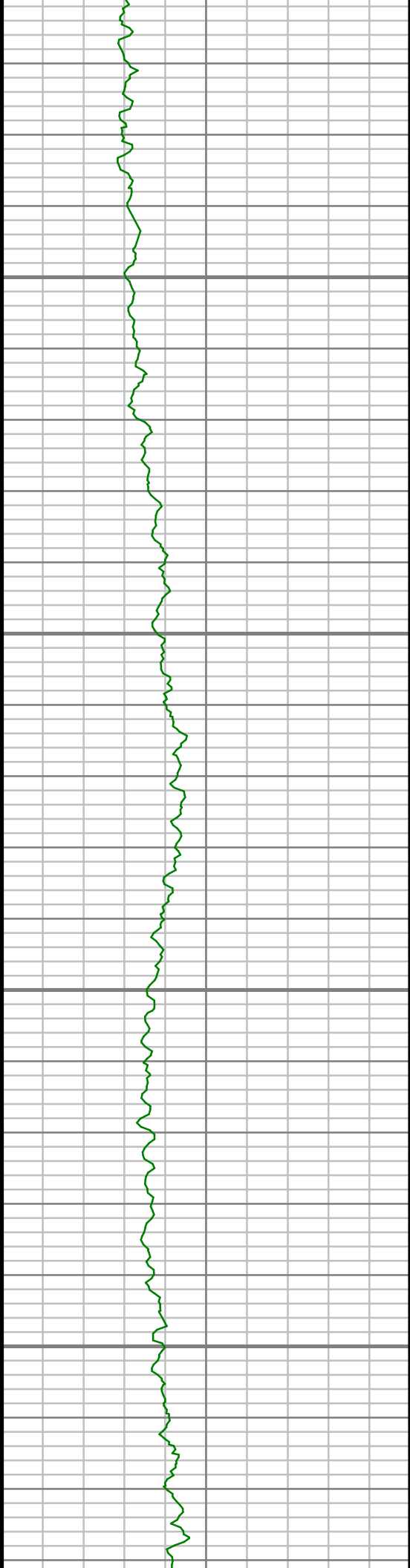
9400

9450



S: 91 MD: 9290.00 ft Inc: 89.70
deg Az: 271.44 deg TVD:
7372.88 ft

S: 92 MD: 9385.00 ft Inc: 88.69
deg Az: 271.81 deg TVD:
7374.22 ft

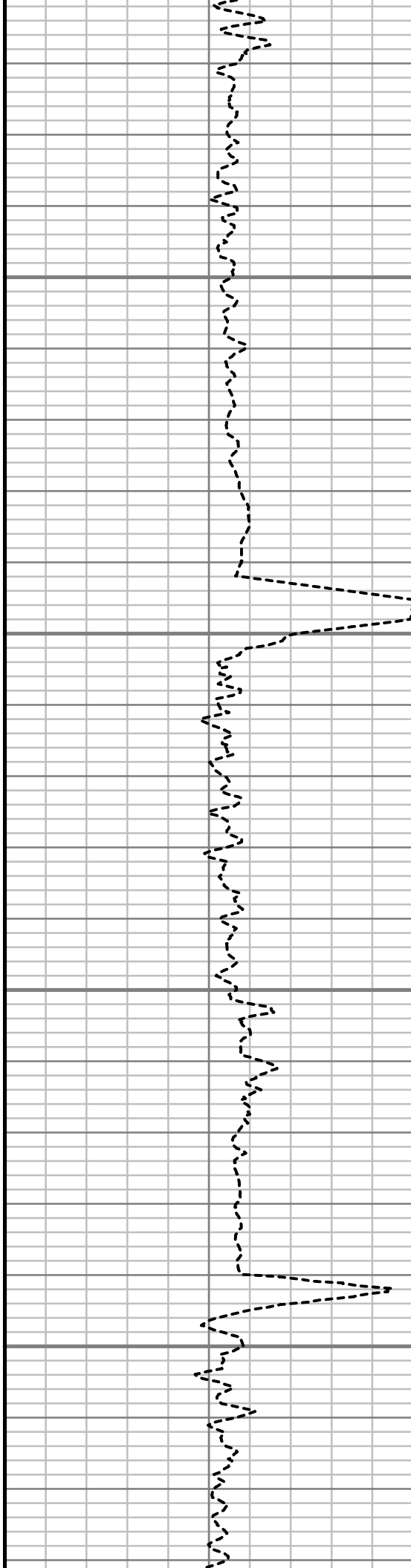


9500

9550

9600

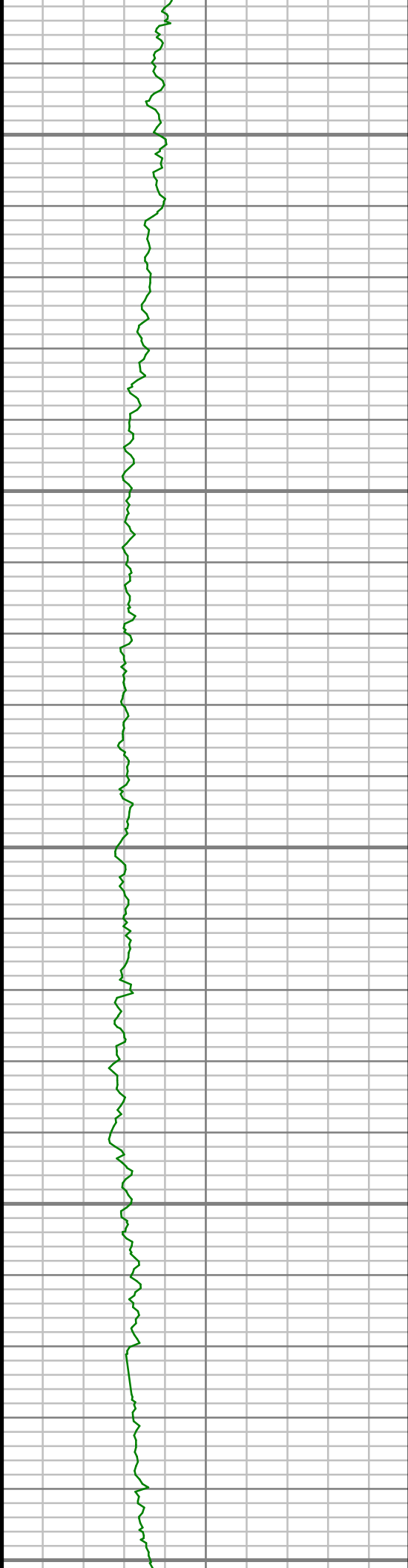
9650



S: 93 MD: 9480.00 ft Inc: 89.46
deg Az: 271.59 deg TVD:
7375.75 ft

S: 94 MD: 9575.00 ft Inc: 89.23
deg Az: 272.19 deg TVD:
7376.84 ft

S: 95 MD: 9671.00 ft Inc: 90.50
deg Az: 272.50 deg TVD:
7377.06 ft



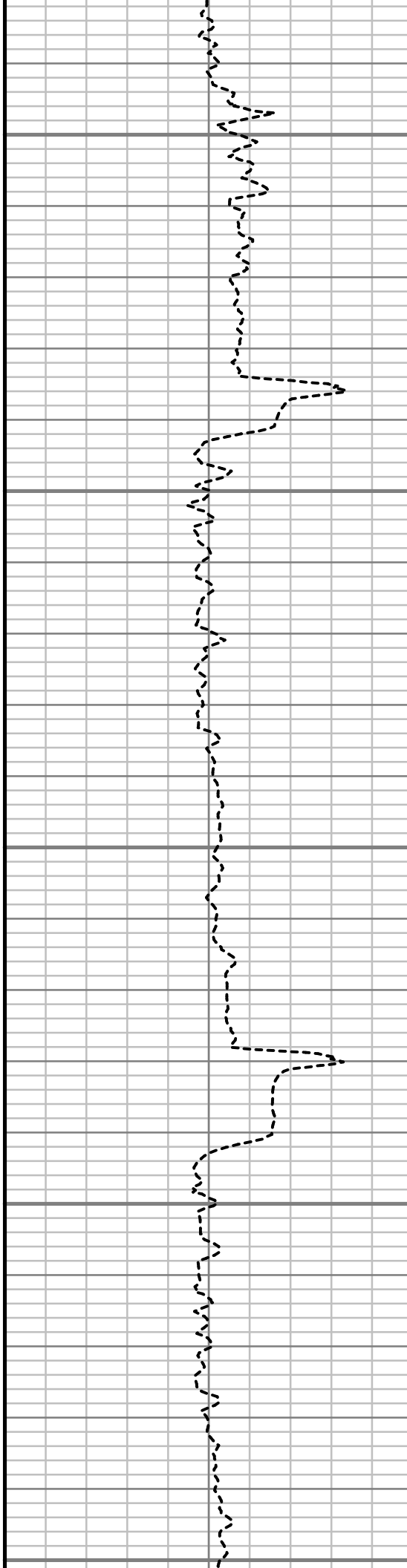
9700

9750

9800

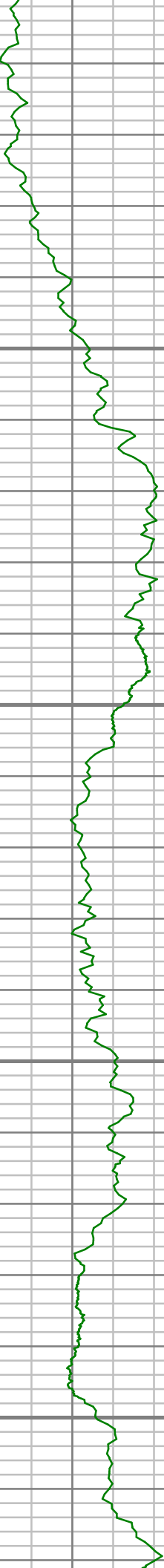
9850

9900



S: 96 MD: 9766.00 ft Inc: 89.70
deg Az: 271.75 deg TVD:
7376.90 ft

S: 97 MD: 9861.00 ft Inc: 90.47
deg Az: 271.49 deg TVD:
7376.76 ft

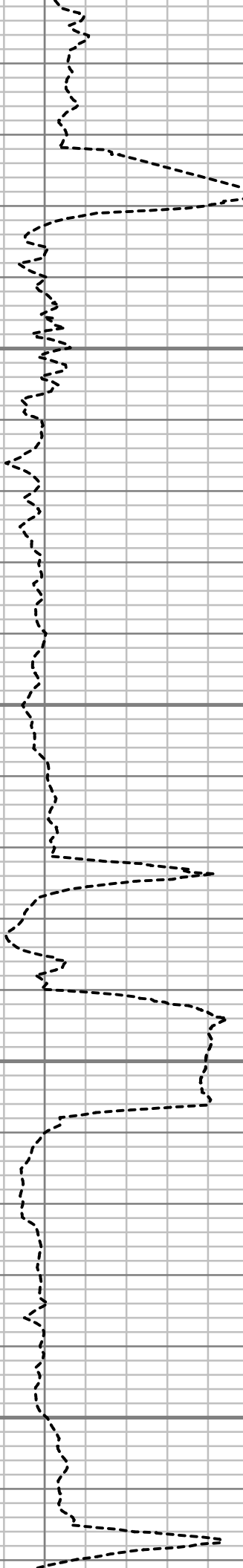


9950

10000

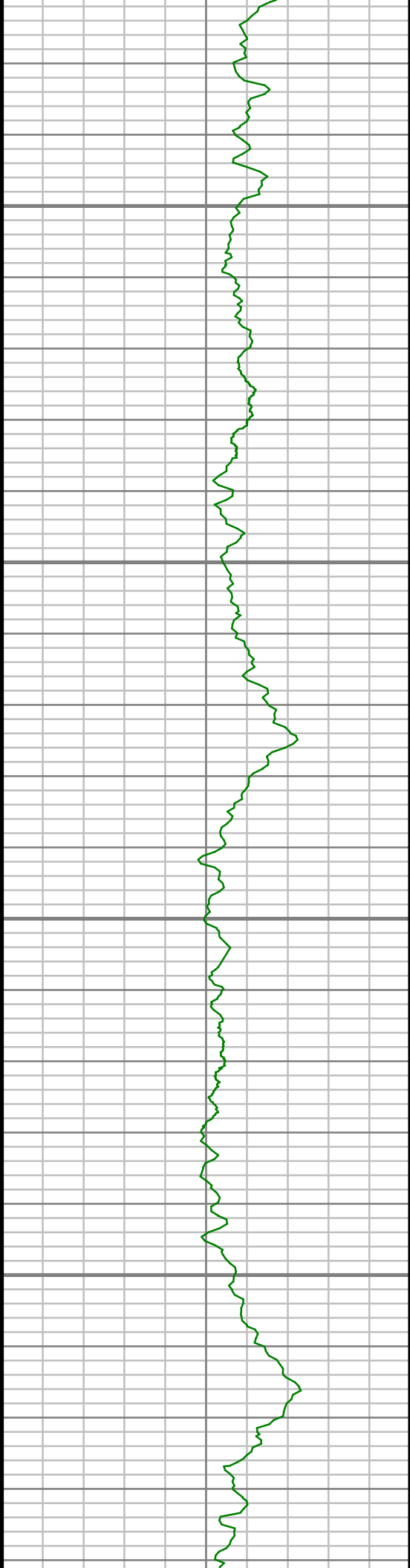
10050

10100



S: 98 MD: 9956.00 ft Inc: 90.71
deg Az: 270.68 deg TVD:
7375.78 ft

S: 99 MD: 10052.00 ft Inc:
91.24 deg Az: 271.56 deg TVD:
7374.15 ft

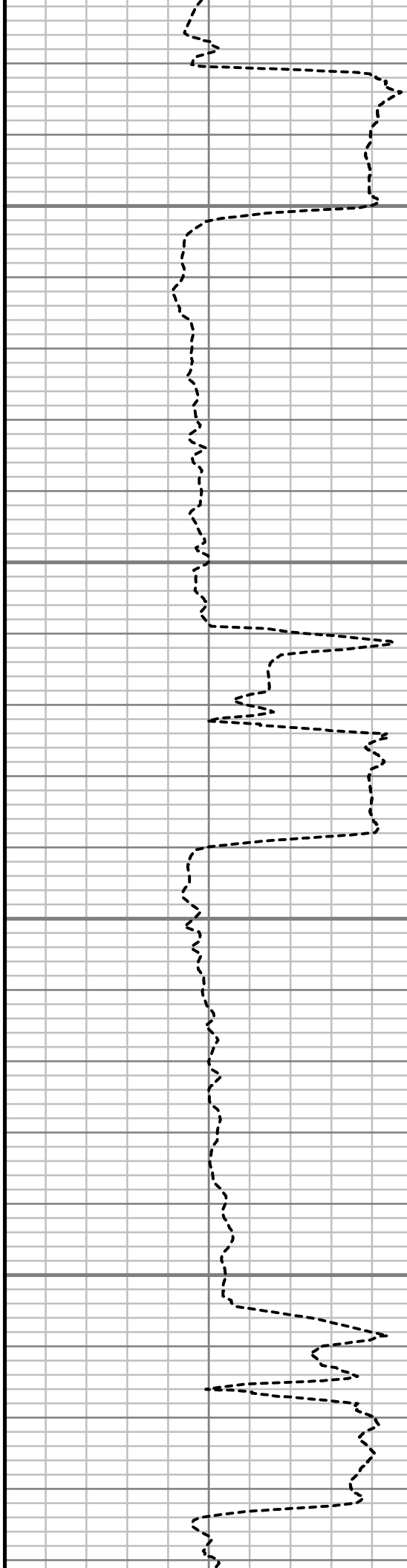


10150

10200

10250

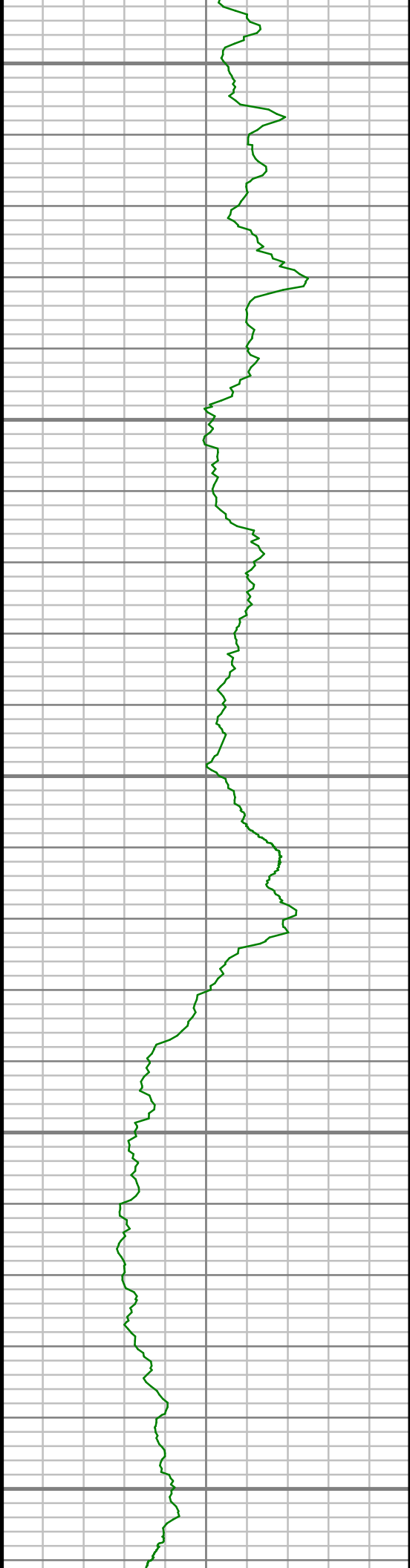
10300



S: 100 MD: 10147.00 ft Inc:
90.87 deg Az: 272.52 deg TVD:
7372.39 ft

S: 101 MD: 10242.00 ft Inc:
90.40 deg Az: 273.25 deg TVD:
7371.34 ft

S: 102 MD: 10337.00 ft Inc:
87.17 deg Az: 271.12 deg TVD:



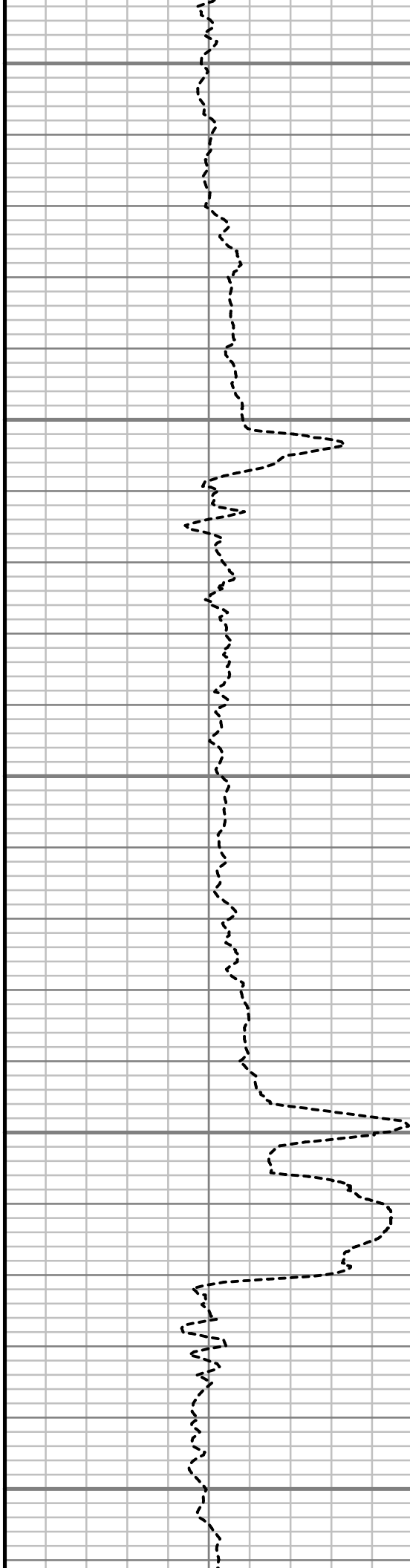
10350

10400

10450

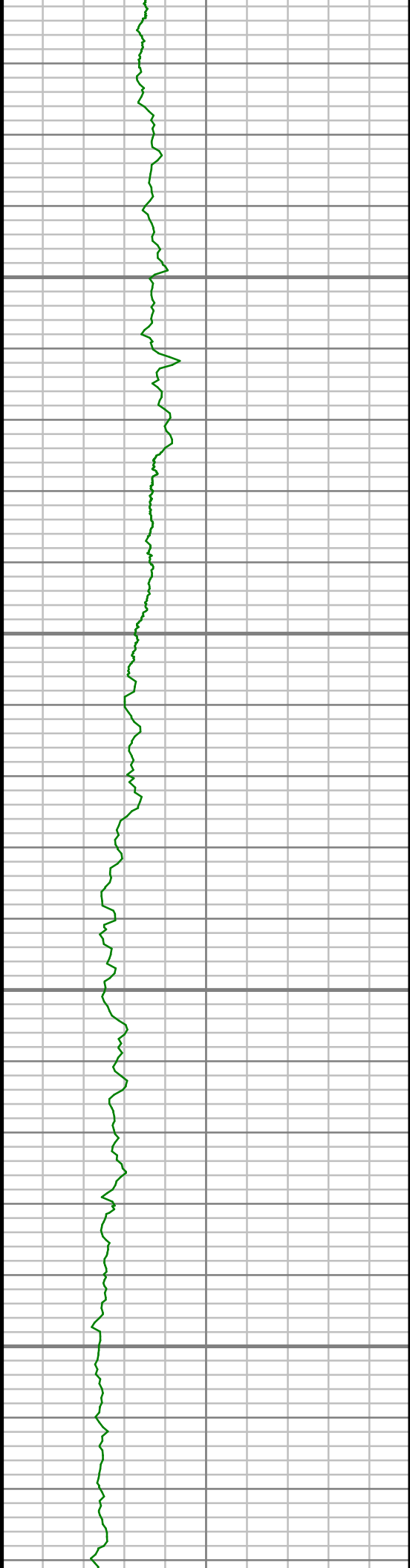
10500

10550



S: 103 MD: 10433.00 ft Inc:
86.63 deg Az: 270.47 deg TVD:
7373.35 ft

S: 104 MD: 10528.00 ft Inc:
87.48 deg Az: 270.01 deg TVD:
7383.41 ft

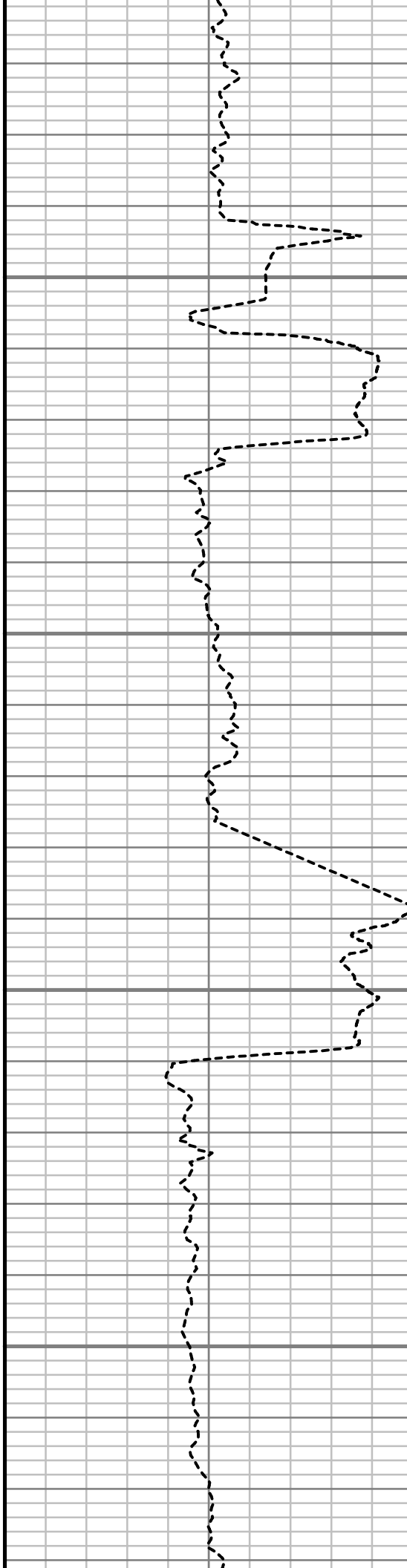


10600

10650

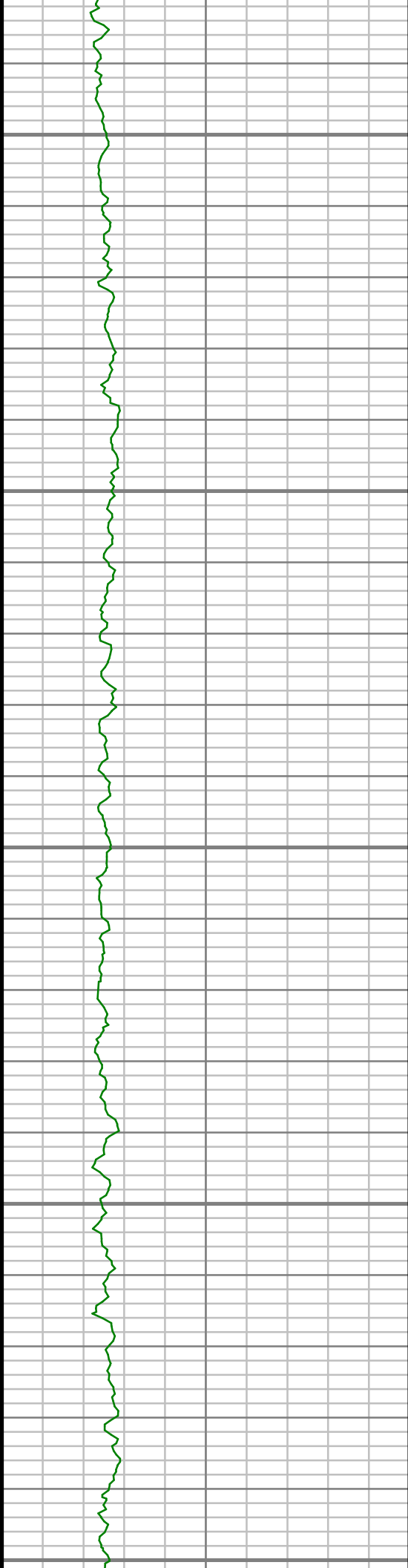
10700

10750



S: 105 MD: 10623.00 ft Inc:
88.12 deg Az: 269.71 deg TVD:
7387.05 ft

S: 106 MD: 10718.00 ft Inc:
89.66 deg Az: 269.22 deg TVD:
7388.89 ft



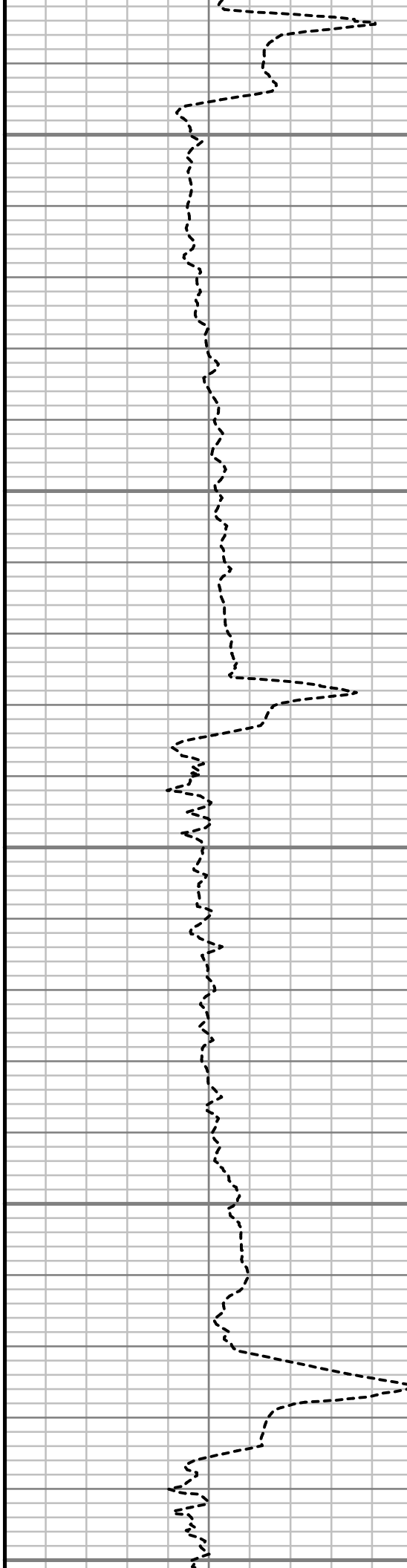
10800

10850

10900

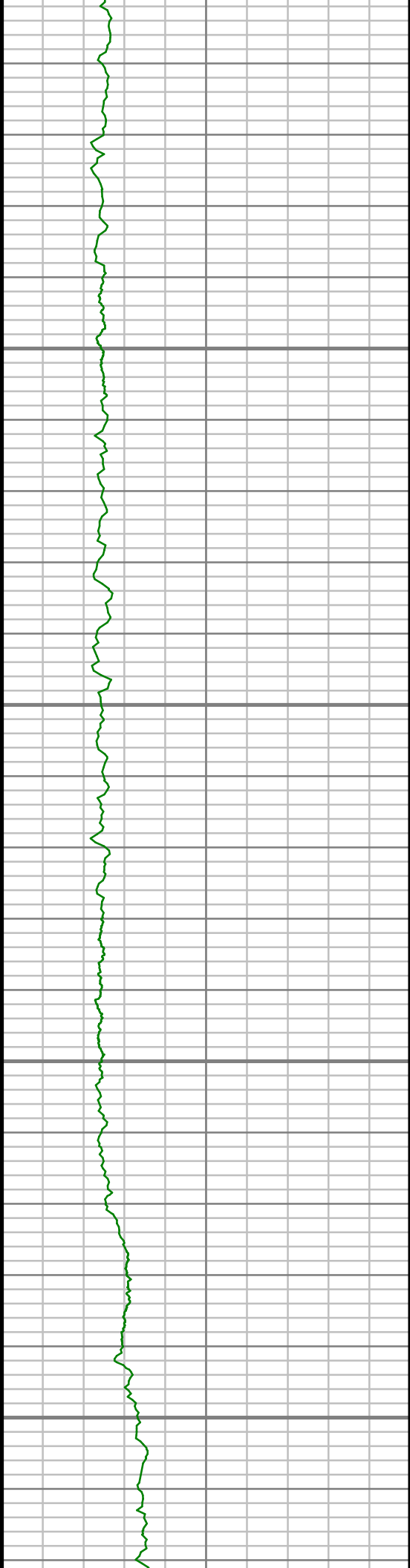
10950

11000



S: 107 MD: 10813.00 ft Inc:
90.34 deg Az: 270.47 deg TVD:
7388.89 ft

S: 108 MD: 10909.00 ft Inc:
90.47 deg Az: 269.31 deg TVD:
7388.22 ft

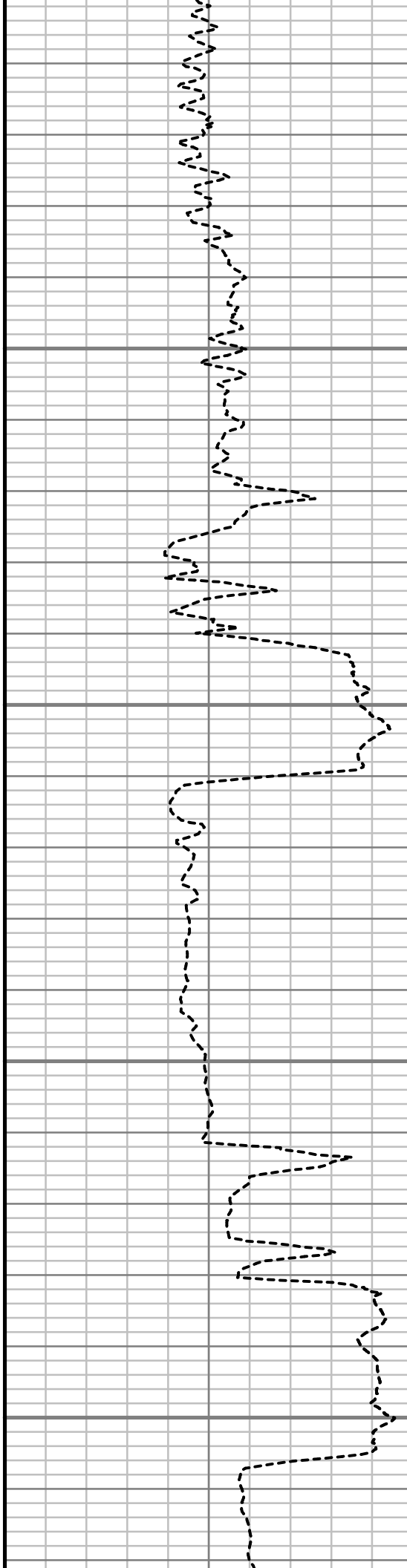


11050

11100

11150

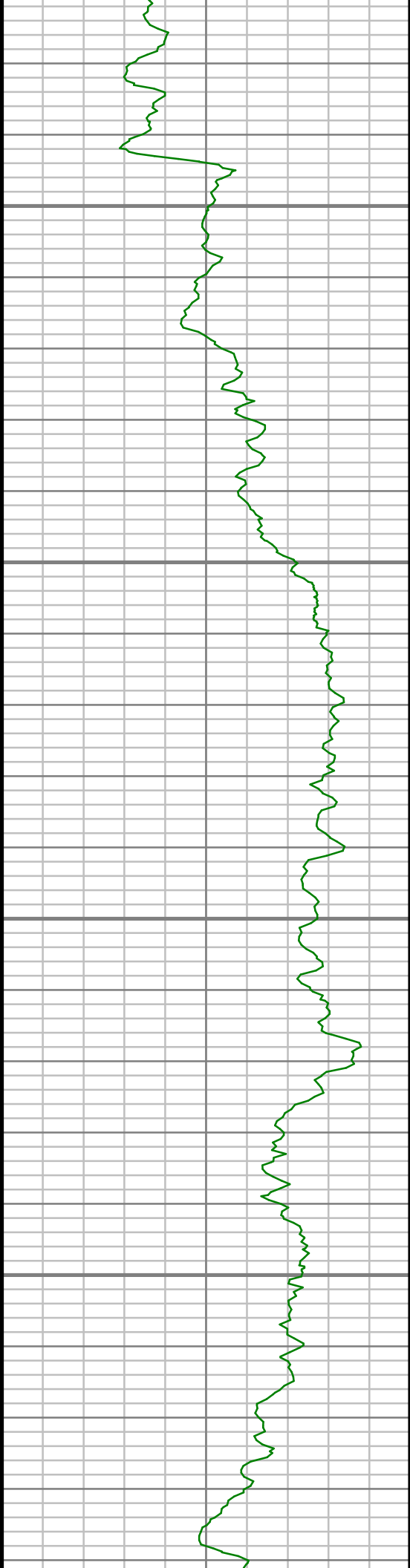
11200



S: 109 MD: 11004.00 ft Inc:
90.64 deg Az: 266.89 deg TVD:
7387.30 ft

S: 110 MD: 11099.00 ft Inc:
91.75 deg Az: 271.21 deg TVD:
7385.32 ft

S: 111 MD: 11194.00 ft Inc:
91.75 deg Az: 273.54 deg TVD:
7382.42 ft

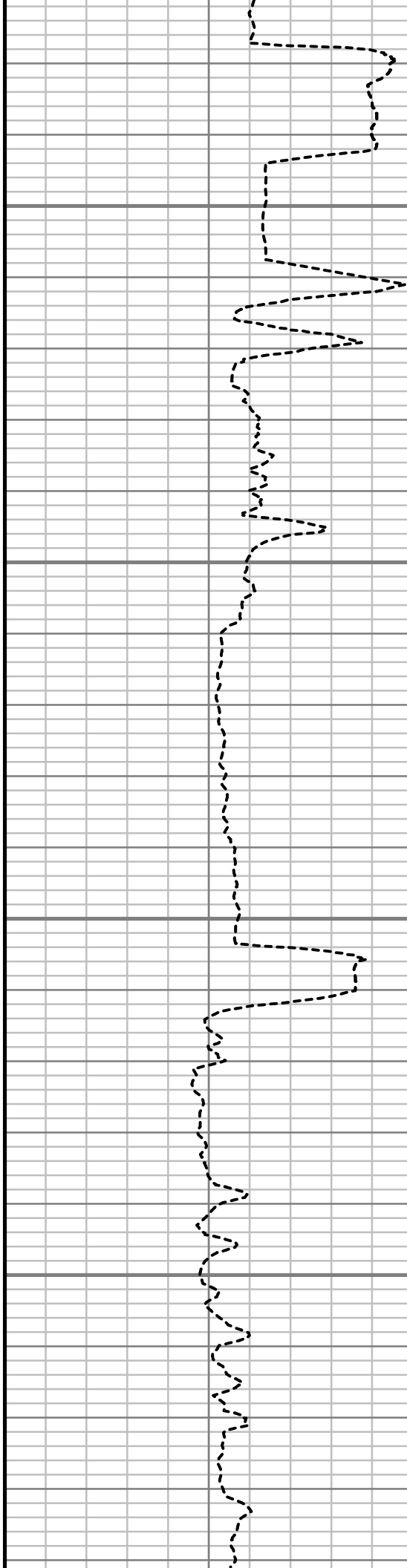


11250

11300

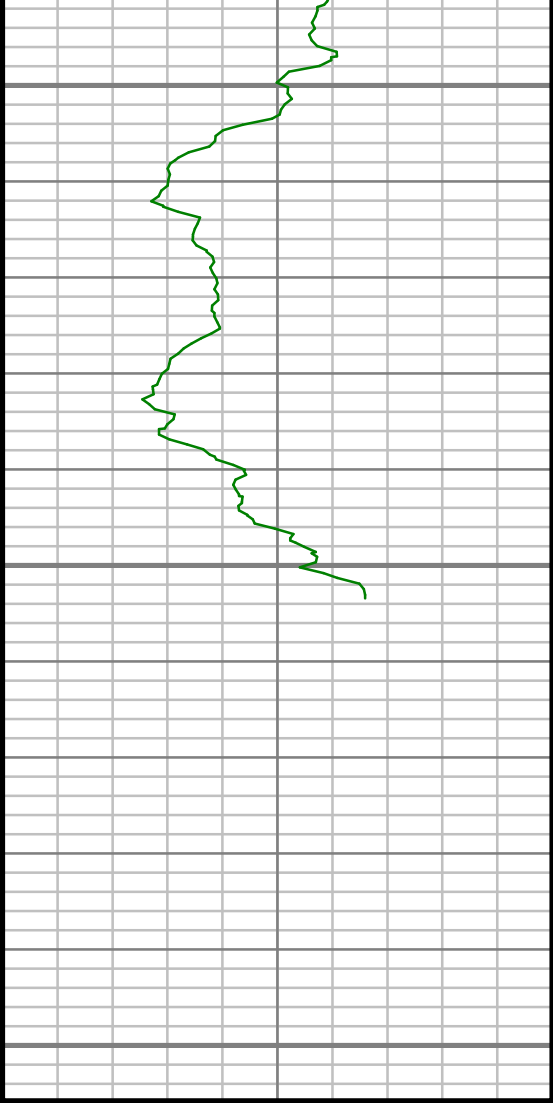
11350

11400



S: 112 MD: 11290.00 ft Inc:
89.50 deg Az: 274.06 deg TVD:
7381.38 ft

S: 113 MD: 11385.00 ft Inc:
88.92 deg Az: 272.84 deg TVD:
7382.69 ft



Gamma Ray (GR)

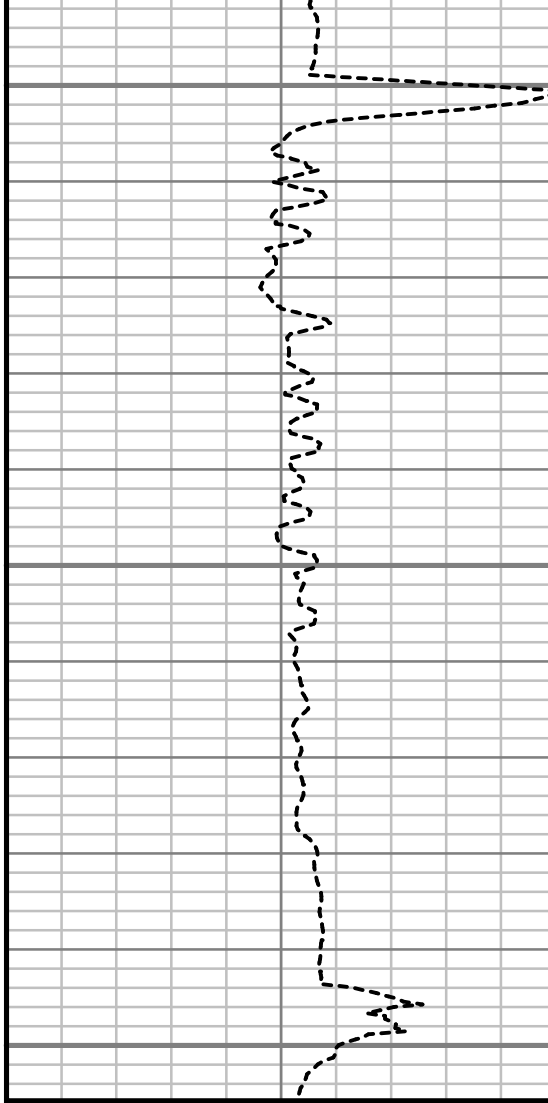
0 Unit = aapi 150

11450

11500

11550

MEASURED DEPTH
1:240 (ft)



Rate of Penetration (ROP)

550 Unit = ft/hr 0

S: 114 MD: 11488.00 ft Inc:
88.35 deg Az: 272.76 deg TVD:
7385.14 ft

Comments

MWD Survey Report

Well Location	McCONAHAY
Well Name	McCONAHAY 1D-34-H266
Survey Date	3/22/2014
Latitude	40°5'52.656"N
Longitude	104°45'27.828"W
Btotal	52598 nT
Dip	66.70 deg
Magnetic Declination	8.51 deg
North Reference	True North
Grid Correction	None
Depth Reference	R.K.B. (13.00 ft)
Calculation Method	Minimum Curvature
Section (VS) Ref	0.00N (ft), 0.00E (ft), 265.00Azim (deg)
Operator(s)	A. NEJAD, J. SMITH, M. SMITH

Well Notes

MD	Inc	Azim	TVD	VS	+N-S	+E-W	Closure Direction	Closure Distance	DLS
ft	deg	deg	ft	ft	ft	ft	deg	ft	°/100ft
0.00	0.00	0.00	0.00	0.00	0.00	0.00	0.00	0.00	Invalid
455.00	4.82	149.85	454.46	-8.12	-16.53	9.60	149.85	19.12	1.06
548.00	6.34	158.27	547.02	-11.26	-24.68	13.46	151.38	28.11	1.85
641.00	8.29	163.39	639.26	-14.09	-35.87	17.28	154.28	39.82	2.21
733.00	9.84	164.88	730.11	-16.80	-49.81	21.23	156.92	54.14	1.70
826.00	11.89	164.47	821.44	-19.95	-66.71	25.86	158.81	71.55	2.21
920.00	13.09	163.59	913.21	-23.83	-86.26	31.46	159.96	91.82	1.29
1012.00	15.23	158.78	1002.42	-29.27	-107.52	38.78	160.17	114.30	2.65
1049.00	15.30	158.07	1038.11	-32.04	-116.58	42.37	160.03	124.04	0.54
1189.00	13.27	154.52	1173.78	-43.05	-148.22	56.18	159.24	158.51	1.58
1373.00	16.64	158.03	1351.52	-58.13	-191.73	75.13	158.60	205.92	1.90
1559.00	15.77	156.16	1530.13	-74.07	-239.54	95.31	158.30	257.81	0.55
1745.00	18.15	167.21	1708.08	-86.17	-290.93	111.95	158.95	311.73	2.15
1931.00	18.45	165.12	1884.67	-95.14	-347.64	125.92	160.09	369.74	0.39
2122.00	17.55	162.72	2066.32	-106.45	-404.35	142.24	160.62	428.64	0.61
2312.00	15.11	156.39	2248.66	-120.45	-454.41	160.67	160.53	481.98	1.59
2503.00	11.02	159.24	2434.67	-133.36	-494.32	177.12	160.29	525.09	2.17
2694.00	11.71	155.43	2621.93	-144.81	-529.01	191.65	160.09	562.66	0.53
2884.00	12.76	153.56	2807.61	-158.94	-565.34	209.01	159.71	602.74	0.59

MD ft	Inc deg	Azim deg	TVD ft	VS ft	+N/-S ft	+E/-W ft	Closure Direction deg	Closure Distance ft	DLS °/100ft
3075.00	13.48	157.19	2993.62	-173.46	-604.76	227.04	159.42	645.97	0.57
3265.00	16.57	151.22	3177.11	-191.17	-648.94	248.67	159.03	694.96	1.82
3456.00	14.69	149.37	3361.04	-212.62	-693.66	274.12	158.44	745.86	1.02
3646.00	16.46	155.12	3544.07	-232.20	-738.81	297.72	158.05	796.54	1.23
3837.00	16.20	163.33	3727.40	-246.79	-788.88	316.75	158.12	850.09	1.22
4027.00	16.72	162.70	3909.61	-257.97	-840.36	332.48	158.41	903.74	0.29
4218.00	18.37	156.81	4091.73	-273.22	-894.27	352.50	158.49	961.24	1.27
4409.00	17.24	156.60	4273.58	-291.55	-947.91	375.59	158.39	1019.61	0.60
4599.00	14.61	156.34	4456.28	-308.10	-995.70	396.39	158.29	1071.70	1.38
4790.00	15.14	150.29	4640.89	-326.24	-1039.42	418.42	158.07	1120.48	0.86
4981.00	17.39	149.51	4824.23	-348.95	-1085.69	445.27	157.70	1173.45	1.19
5171.00	15.57	155.02	5006.43	-369.89	-1133.29	470.45	157.46	1227.05	1.26
5362.00	15.20	161.67	5190.60	-384.42	-1180.30	489.15	157.49	1277.64	0.94
5552.00	16.19	163.71	5373.51	-395.34	-1229.36	504.41	157.69	1328.82	0.59
5744.00	12.94	163.76	5559.32	-404.77	-1275.70	517.93	157.90	1376.83	1.69
5934.00	12.14	161.30	5744.79	-413.65	-1315.05	530.29	158.04	1417.94	0.50
6125.00	11.85	165.10	5931.62	-421.79	-1353.03	541.77	158.18	1457.47	0.44
6315.00	11.27	158.18	6117.77	-430.51	-1389.12	553.69	158.27	1495.40	0.79

MD ft	Inc deg	Azim deg	TVD ft	VS ft	+N/-S ft	+E/-W ft	Closure Direction deg	Closure Distance ft	DLS °/100ft
6506.00	12.82	157.79	6304.56	-442.18	-1426.05	568.63	158.26	1535.24	0.81
6696.00	12.42	158.40	6489.98	-454.25	-1464.55	584.12	158.26	1576.74	0.22
6760.00	9.89	158.39	6552.76	-457.79	-1476.06	588.68	158.26	1589.12	3.95
6791.00	10.60	163.38	6583.27	-459.13	-1481.27	590.47	158.27	1594.62	3.68
6823.00	10.45	165.36	6614.73	-460.20	-1486.90	592.05	158.29	1600.43	1.23
6855.00	9.12	177.88	6646.27	-460.56	-1492.24	592.88	158.33	1605.70	7.82
6887.00	8.44	199.48	6677.90	-459.46	-1496.99	592.19	158.42	1609.86	10.45
6918.00	9.55	210.43	6708.52	-457.03	-1501.35	590.13	158.54	1613.17	6.58
6950.00	11.94	220.59	6739.96	-453.12	-1506.16	586.63	158.72	1616.36	9.49
6982.00	14.65	228.45	6771.10	-447.51	-1511.35	581.44	158.96	1619.34	10.17
7013.00	17.17	236.15	6800.92	-440.35	-1516.51	574.71	159.24	1621.75	10.59
7045.00	19.72	243.56	6831.27	-431.18	-1521.54	565.95	159.60	1623.39	10.81
7077.00	21.42	249.11	6861.24	-420.54	-1526.03	555.65	159.99	1624.05	8.07
7109.00	23.16	249.97	6890.84	-408.84	-1530.27	544.28	160.42	1624.18	5.52
7141.00	25.27	249.50	6920.03	-396.18	-1534.82	531.97	160.88	1624.40	6.63
7172.00	26.71	249.15	6947.89	-383.10	-1539.62	519.26	161.36	1624.82	4.68
7204.00	29.08	249.03	6976.17	-368.70	-1544.96	505.28	161.89	1625.49	7.38
7236.00	31.54	249.46	7003.79	-353.16	-1550.68	490.18	162.46	1626.31	7.74

MD	Inc	Azim	TVD	VS	+N/-S	+E/-W	Closure Direction	Closure Distance	DLS
ft	deg	deg	ft	ft	ft	ft	deg	ft	°/100ft
7268.00	34.08	248.78	7030.69	-336.49	-1556.86	473.98	163.07	1627.42	8.00
7299.00	37.34	248.99	7055.86	-319.11	-1563.38	457.10	163.70	1628.83	10.54
7331.00	40.14	249.32	7080.81	-299.84	-1570.50	438.39	164.40	1630.54	8.76
7363.00	42.26	249.50	7104.89	-279.54	-1577.92	418.66	165.14	1632.51	6.65
7395.00	43.76	248.35	7128.29	-258.57	-1585.77	398.29	165.90	1635.02	5.29
7427.00	45.83	246.76	7151.00	-237.06	-1594.38	377.46	166.68	1638.45	7.33
7459.00	47.41	246.57	7172.97	-214.99	-1603.59	356.10	167.48	1642.66	4.97
7490.00	49.40	247.67	7193.55	-192.92	-1612.60	334.74	168.27	1646.98	6.96
7522.00	52.31	249.13	7213.75	-169.14	-1621.73	311.67	169.12	1651.41	9.75
7554.00	55.62	250.68	7232.57	-144.16	-1630.61	287.37	170.01	1655.74	11.05
7586.00	58.17	252.02	7250.05	-118.11	-1639.18	261.97	170.92	1659.98	8.71
7617.00	60.53	253.15	7265.85	-92.07	-1647.16	236.53	171.83	1664.05	8.22
7649.00	62.37	254.48	7281.14	-64.49	-1654.99	209.53	172.78	1668.20	6.83
7681.00	64.95	257.11	7295.34	-36.19	-1662.02	181.74	173.76	1671.93	10.90
7713.00	66.86	259.73	7308.41	-7.18	-1667.88	153.12	174.75	1674.89	9.57
7744.00	68.90	261.52	7320.08	21.46	-1672.55	124.79	175.73	1677.20	8.47
7776.00	71.28	263.11	7330.98	51.51	-1676.57	94.98	176.76	1679.26	8.80
7808.00	74.05	264.69	7340.51	82.04	-1679.81	64.61	177.80	1681.06	9.87

MD	Inc	Azim	TVD	VS	+N/-S	+E/-W	Closure Direction	Closure Distance	DLS
ft	deg	deg	ft	ft	ft	ft	deg	ft	°/100ft
7840.00	76.11	265.16	7348.75	112.96	-1682.55	33.81	178.85	1682.89	6.56
7871.00	78.40	265.53	7355.59	143.20	-1685.00	3.67	179.88	1685.00	7.49
7903.00	81.58	265.57	7361.15	174.70	-1687.45	-27.74	180.94	1687.67	9.95
7935.00	84.86	264.74	7364.93	206.48	-1690.13	-59.40	182.01	1691.17	10.55
7952.00	86.81	264.49	7366.17	223.43	-1691.72	-76.28	182.58	1693.44	11.58
8051.00	91.21	263.77	7367.88	322.38	-1701.84	-174.72	185.86	1710.78	4.51
8146.00	91.51	264.21	7365.62	417.34	-1711.78	-269.17	188.94	1732.81	0.56
8241.00	91.45	264.46	7363.17	512.30	-1721.15	-363.67	191.93	1759.15	0.27
8337.00	91.72	265.99	7360.52	608.26	-1729.14	-459.30	194.88	1789.10	1.62
8432.00	90.07	267.47	7359.04	703.20	-1734.56	-554.13	197.72	1820.92	2.33
8527.00	88.59	269.78	7360.16	797.99	-1736.84	-649.09	200.49	1854.17	2.90
8623.00	89.60	269.42	7361.68	893.67	-1737.51	-745.07	203.21	1890.52	1.12
8718.00	88.39	270.24	7363.35	988.31	-1737.79	-840.05	205.80	1930.18	1.54
8813.00	88.69	269.85	7365.78	1082.92	-1737.71	-935.02	208.28	1973.30	0.52
8908.00	90.00	270.25	7366.86	1177.54	-1737.63	-1030.01	210.66	2019.97	1.44
9004.00	89.50	270.96	7367.29	1273.08	-1736.61	-1126.01	212.96	2069.71	0.91
9099.00	88.65	271.53	7368.82	1367.50	-1734.55	-1220.97	215.14	2121.18	1.07
9194.00	88.39	271.40	7371.28	1461.86	-1732.12	-1315.91	217.22	2175.29	0.31

MD ft	Inc deg	Azim deg	TVD ft	VS ft	+N/-S ft	+E/-W ft	Closure Direction deg	Closure Distance ft	DLS °/100ft
9290.00	89.70	271.44	7372.88	1557.25	-1729.75	-1411.86	219.22	2232.80	1.36
9385.00	88.69	271.81	7374.22	1651.60	-1727.06	-1506.81	221.10	2291.99	1.13
9480.00	89.46	271.59	7375.75	1745.94	-1724.25	-1601.76	222.89	2353.44	0.85
9575.00	89.23	272.19	7376.84	1840.25	-1721.11	-1696.70	224.59	2416.82	0.68
9671.00	90.50	272.50	7377.06	1935.46	-1717.18	-1792.62	226.23	2482.38	1.37
9766.00	89.70	271.75	7376.90	2029.72	-1713.66	-1887.55	227.76	2549.41	1.16
9861.00	90.47	271.49	7376.76	2124.09	-1710.98	-1982.51	229.20	2618.74	0.86
9956.00	90.71	270.68	7375.78	2218.55	-1709.18	-2077.49	230.56	2690.22	0.89
10052.00	91.24	271.56	7374.15	2313.99	-1707.31	-2173.46	231.85	2763.84	1.07
10147.00	90.87	272.52	7372.39	2408.25	-1703.93	-2268.38	233.09	2837.06	1.09
10242.00	90.40	273.25	7371.34	2502.35	-1699.15	-2363.25	234.28	2910.68	0.91
10337.00	87.17	271.12	7373.35	2596.56	-1695.53	-2458.14	235.40	2986.18	4.07
10433.00	86.63	270.47	7378.53	2691.93	-1694.19	-2553.99	236.44	3064.83	0.88
10528.00	87.48	270.01	7383.41	2786.41	-1693.79	-2648.86	237.40	3144.11	1.01
10623.00	88.12	269.71	7387.05	2881.00	-1694.02	-2743.79	238.31	3224.61	0.75
10718.00	89.66	269.22	7388.89	2975.69	-1694.91	-2838.77	239.16	3306.25	1.70
10813.00	90.34	270.47	7388.89	3070.34	-1695.16	-2933.77	239.98	3388.30	1.50
10909.00	90.47	269.31	7388.22	3165.99	-1695.34	-3029.76	240.77	3471.83	1.22

MD ft	Inc deg	Azim deg	TVD ft	VS ft	+N/-S ft	+E/-W ft	Closure Direction deg	Closure Distance ft	DLS °/100ft
11004.00	90.64	266.89	7387.30	3260.84	-1698.48	-3124.70	241.47	3556.48	2.55
11099.00	91.75	271.21	7385.32	3355.56	-1700.05	-3219.64	242.16	3640.92	4.69
11194.00	91.75	273.54	7382.42	3449.72	-1696.12	-3314.51	242.90	3723.28	2.45
11290.00	89.50	274.06	7381.38	3544.58	-1689.76	-3410.29	243.64	3805.96	2.41
11385.00	88.92	272.84	7382.69	3638.54	-1684.04	-3505.10	244.34	3888.67	1.42
11488.00	88.35	272.76	7385.14	3740.56	-1679.02	-3607.95	245.04	3979.50	0.56

5" = 100' FEET MD