



GAMMA RAY

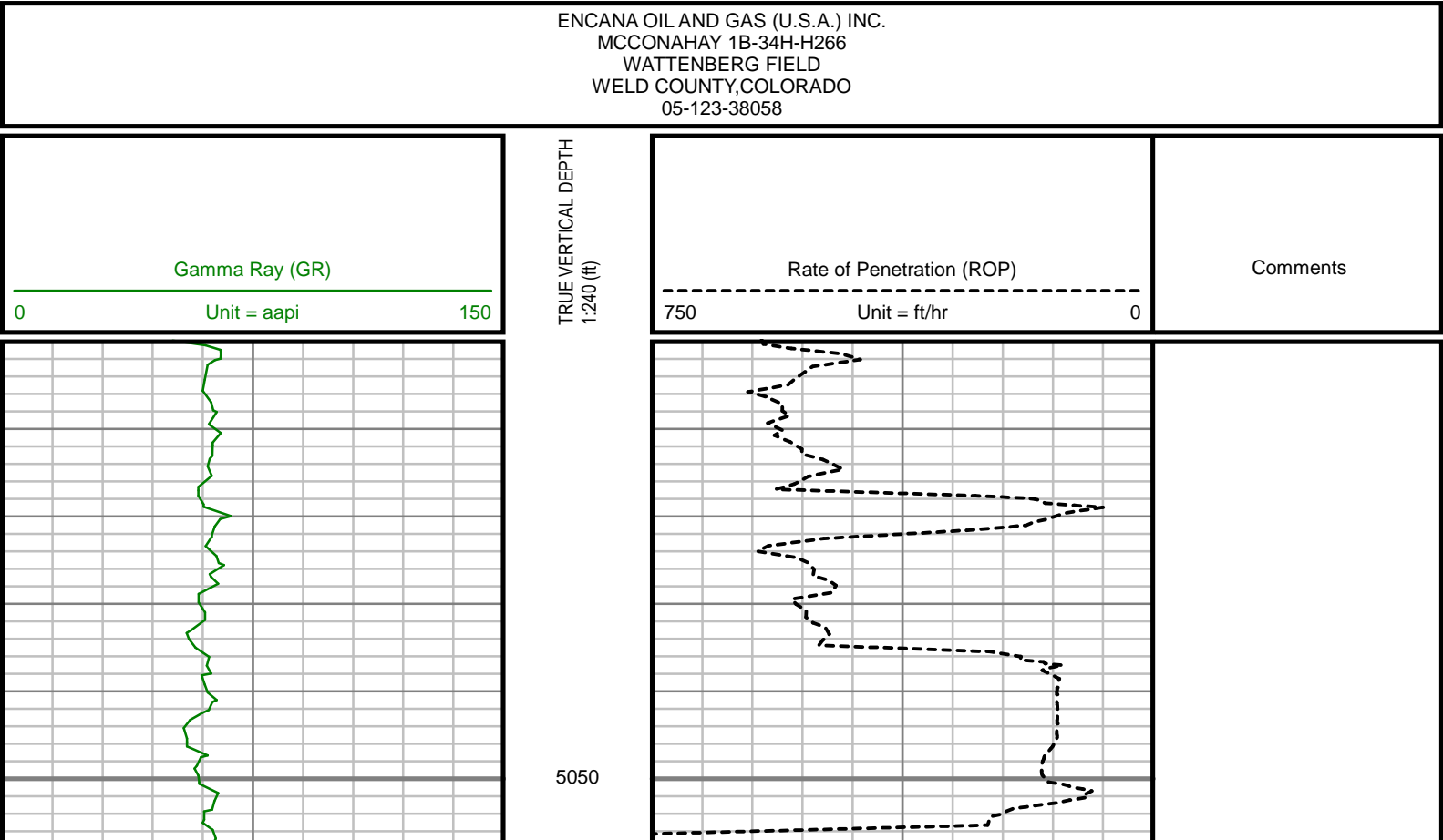
5" = 100' FEET TVD

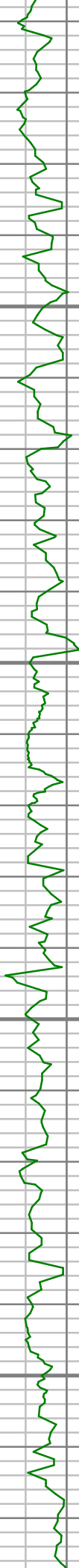
COMPANY : ENCANA OIL & GAS (U.S.A.) INC.					
WELL : MCCONAHAY 1B-34H-H266					
FIELD : WATTENBERG					
COUNTY : WELD					
STATE : COLORADO					
COUNTRY : U.S.A.					
UWI : 05-123-38058					
DEPTH REF. : RKB			DIRECTIONAL ROP		
REF. HEIGHT : 13.000 ft			RKB to Ground Level		
GROUND LEVEL : 5060.000 ft			G.L. to MEAN SEA LEVEL		
BOREHOLE RECORD			DEVATION RECORD		
HOLE SIZE in	FROM ft	TO ft	INCLINATION deg	FROM ft	TO ft
12.25	96	1150	0 - 8	96	1150
8.75	1150	8003	8 - 82	1150	8003
6.125	8003	11510	82 - 92	8003	11510
CASING RECORD					
CASING SIZE in	FROM ft	TO ft			
9.625	0	1136			
7	0	7982			
DRILLING CO.: ENSIGN			LMD UNIT NO.: C70-EW4#83DISTRICT: CASPER		
RLG: 124			SPUD DATE: 04/15/2014		
			LMD START DATE: 04/17/2014		
			LMD END DATE: 04/24/2014		
			DEPTH: 5000 ft		
			DEPTH: 11510 ft		
			TOTAL DEPTH: 11510 ft		

Run Data						
RUN NUMBER	1	2	3			
START DATE	04/15/2014	04/17/2014	04/21/2014			
START TIME	0900	0210	1100			
END DATE	04/15/2014	04/20/2014	04/24/2014			
END TIME	1630	0430	0730			
DEPTH IN (ft)	96	1150	8003			
DEPTH OUT (ft)	1150	8003	11510			
LOG TOP (ft)	-	5000	7950			
LOG BOTTOM (ft)	-	7950	11510			
HOLE SIZE (in)	12.25	8.75	6.125			
MUD DATA @ (ft)	1150	8003	11510			
MUD TYPE	WATER-BASED	WATER-BASED	WATER-BASED			
DENSITY (lb / gal)	9.20	10.40	10			
VISCOSITY (s / qt)	32	40	40			
pH	7.1	8.2	7.8			
FLUID LOSS (cm3 / 30)	-	-	-			
SALINITY (ppm)	-	-	-			
Rm (ohmm @ deg F)	-	-	-			
Rmf (ohmm @ deg F)	-	-	-			
MAX TEMP (deg F)	91	183	222			
Rm @ MAX TEMP (ohmm)	-	-	-			
LWD ENGINEER #1	J. SMITH	J. SMITH	J. SMITH			
LWD ENGINEER #2	M. SMITH	M. SMITH	M. SMITH			
LWD ENGINEER #3	A. NEJAD	A. NEJAD	A. NEJAD			
LOG WITNESS #1	M. ROANE	M. ROANE	M. ROANE			
LOG WITNESS #2	-	-	-			

Remarks
ENCANA OIL & GAS (U.S.A.) INC PRODUCTION AFE# 13178366
SCIENTIFIC DRILLING INTERNATIONAL JOB# 138883
ALL REFERENCES IN THE DEPTH TRACK ARE AT BIT DEPTH.
ALL DATA IS MEMORY DATA UNLESS STATED OTHERWISE.
FLAT AVERAGE FILTER OF 1.00 FT APPLIED TO GAMMA RAY CURVE
FLAT AVERAGE FILTER OF 1.00 FT APPLIED TO RATE OF PENETRATION CURVE
RUN #1: MWD / DIRECTIONAL RUN
SENSORS S/N: CONT = 814 / MWD EYE = 0429
BIT TO SENSOR OFFSET: SURVEY = 59.07 FT.
RUN #2: MWD / GAMMA RAY LOGGING RUN
SENSORS S/N: PULSER = 128-221/ CONT = 114 / MWD EYE = 862 / GAMMA RAY = 1050
BIT TO SENSOR OFFSETS: SURVEY = 66.26 FT. / GAMMA RAY = 53.05 FT.
RUN #3: MWD / GAMMA RAY LOGGING RUN
SENSORS S/N: PULSER = 78-1085 / CONT = 831 / MWD EYE = 0429 / GAMMA RAY = 1074
BIT TO SENSOR OFFSETS: SURVEY = 65.62 FT. / GAMMA RAY = 52.37 FT.
MNEMONICS LIST:
GR = GAMMA RAY
ROP = RATE OF PENETRATION

All interpretations are opinions based on inferences from electrical or other measurements and we cannot, and do not guarantee the accuracy or correctness of any interpretations, and we shall not, except in the case of gross or willful negligence on our part, be liable or responsible for any loss, costs, damages or expenses incurred or sustained by anyone resulting from any interpretation made by any of our officers, agents or employees. These interpretations are also subject to our general terms and conditions as set out in our current price schedule.



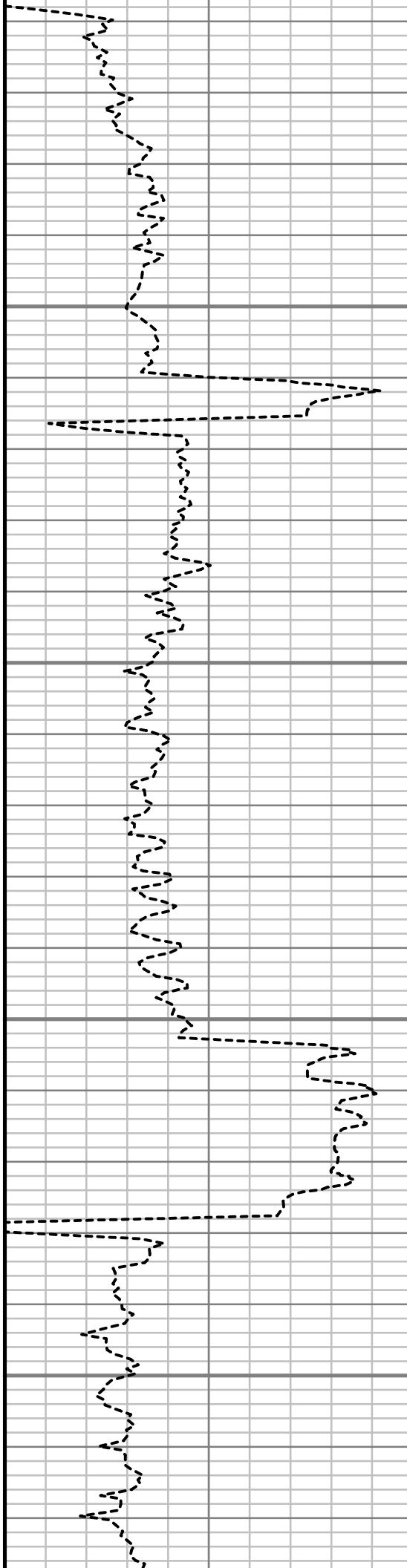


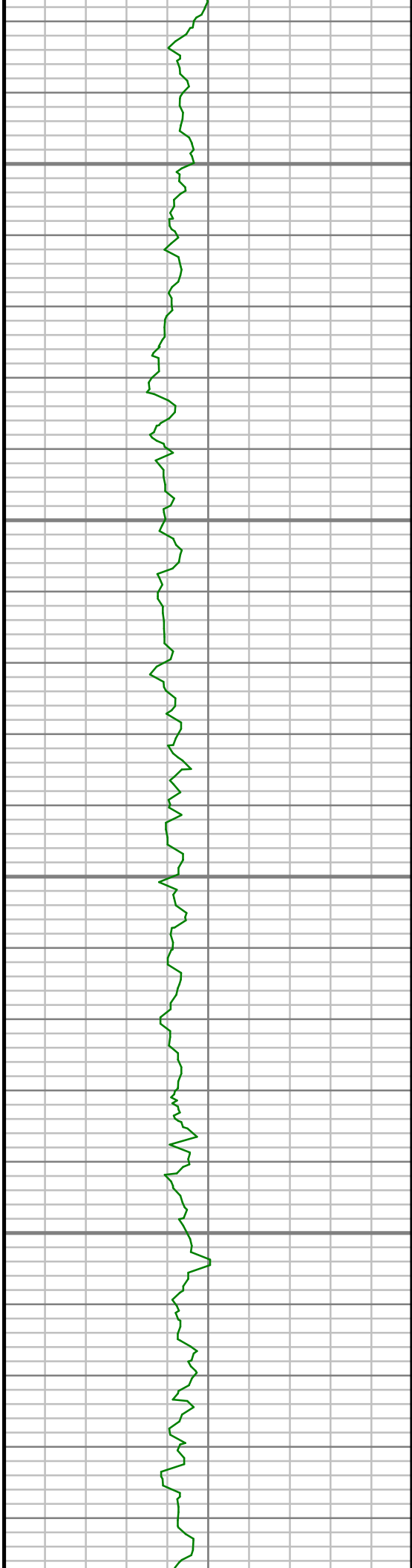
5100

5150

5200

5250



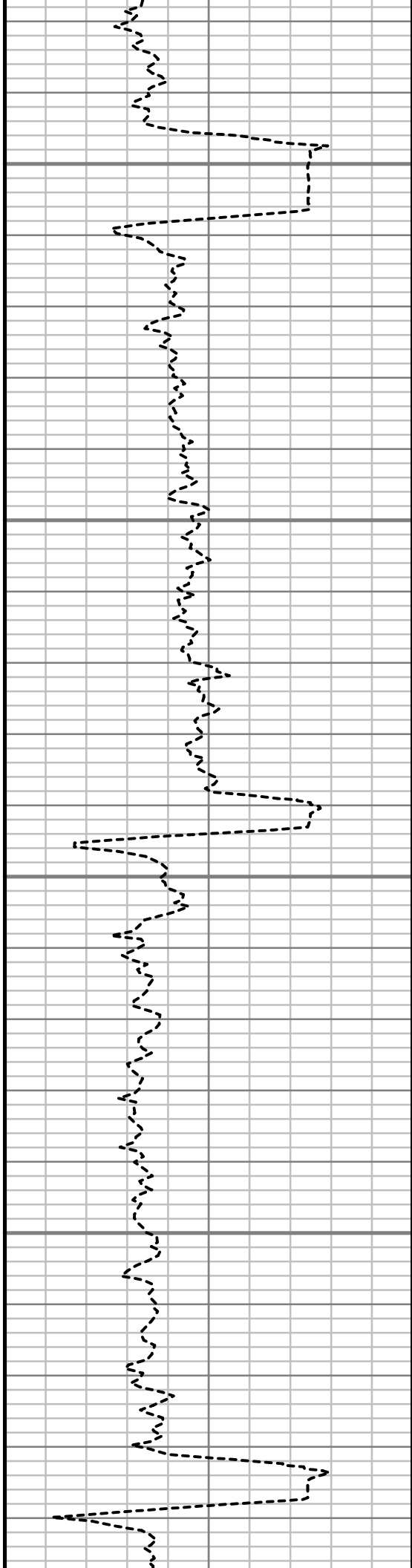


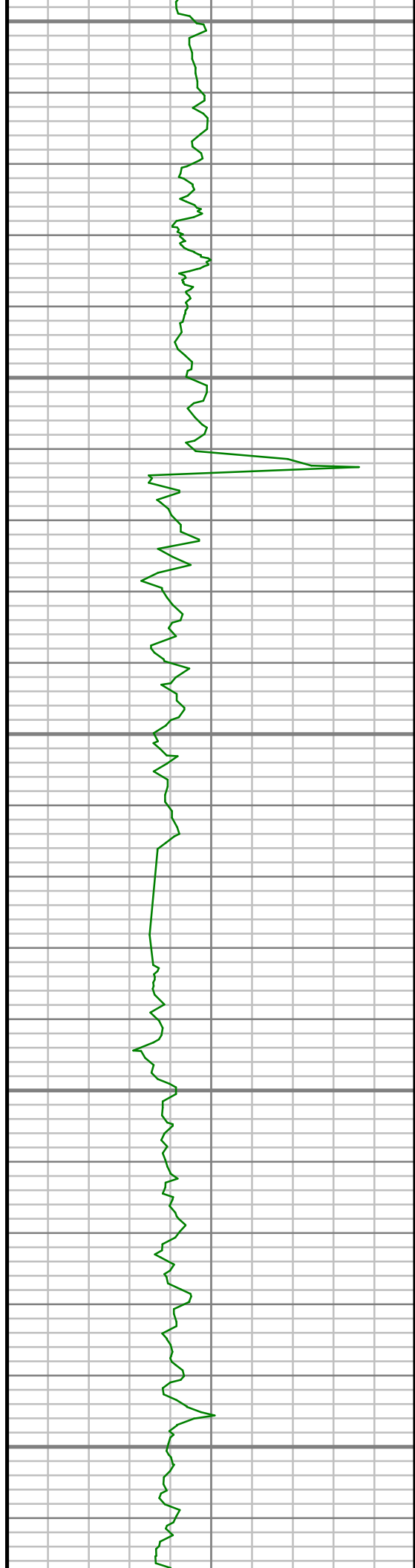
5300

5350

5400

5450





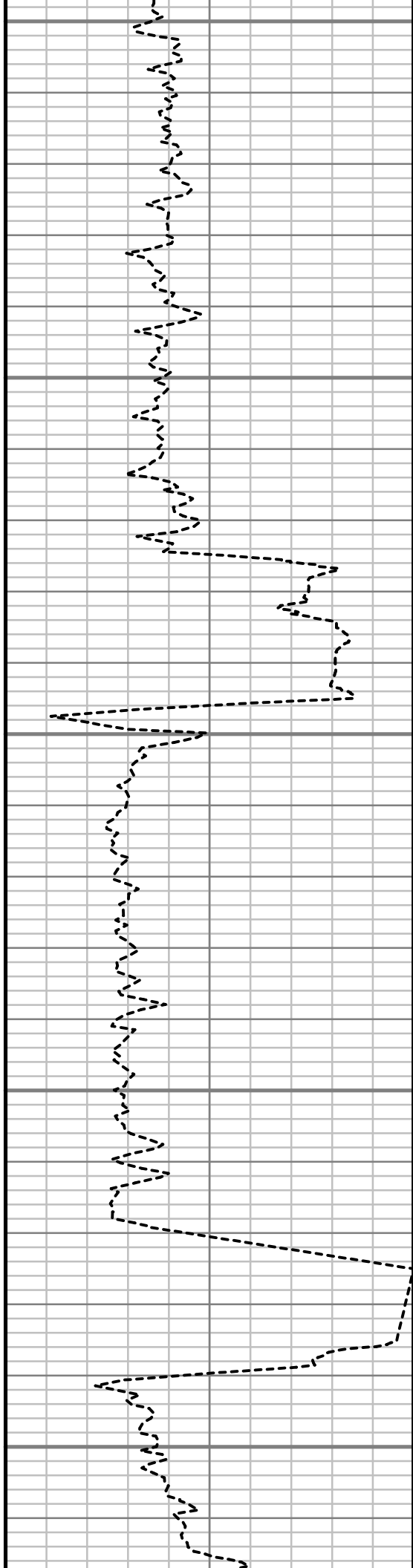
5500

5550

5600

5650

5700



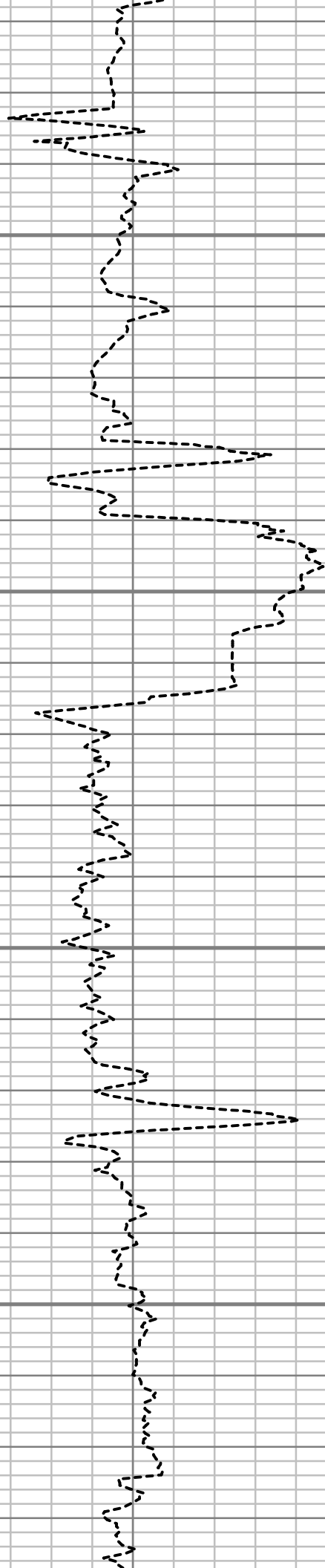


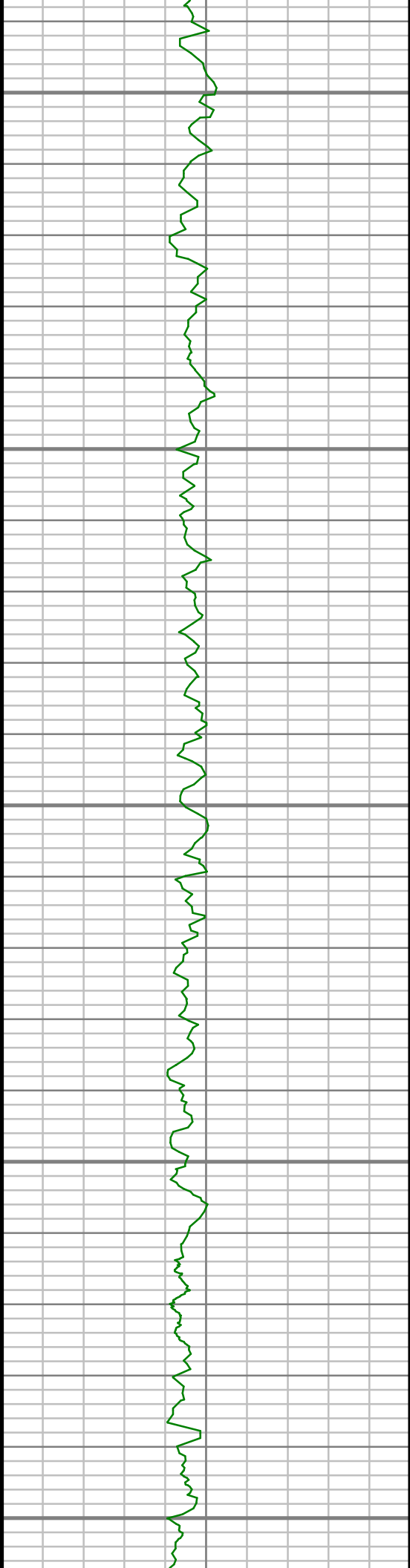
5750

5800

5850

5900





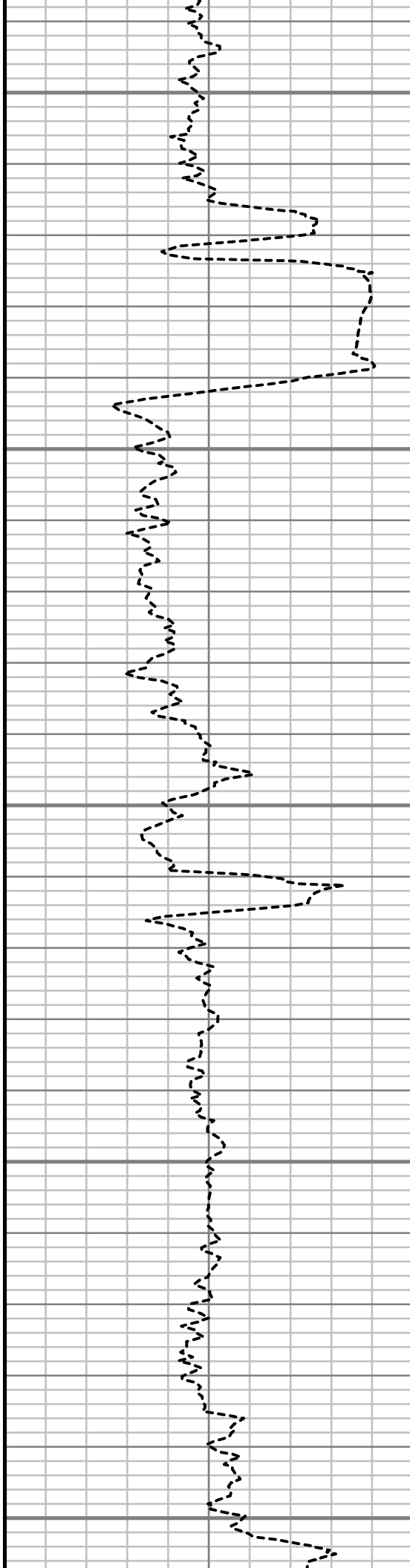
5950

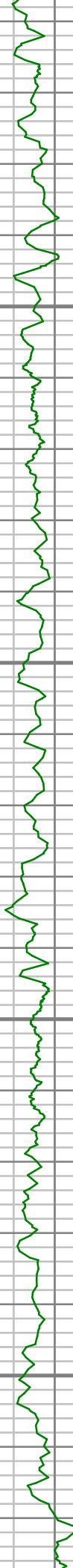
6000

6050

6100

6150



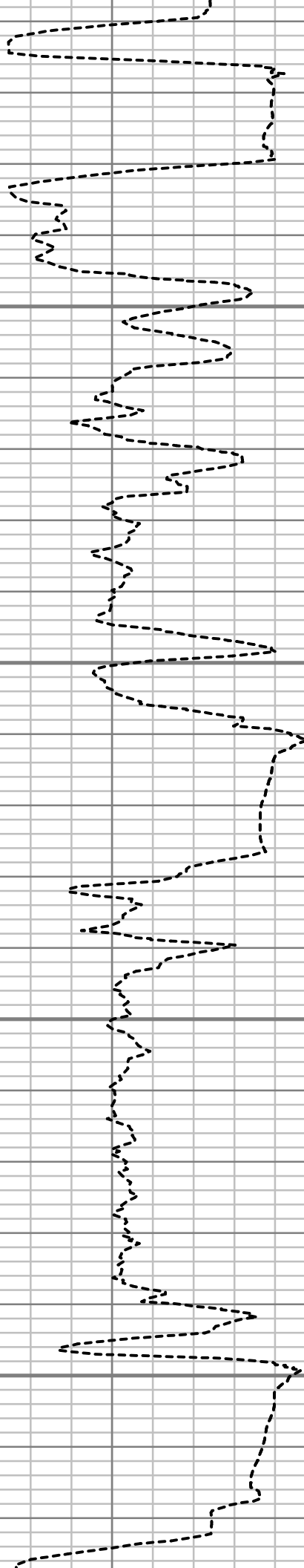


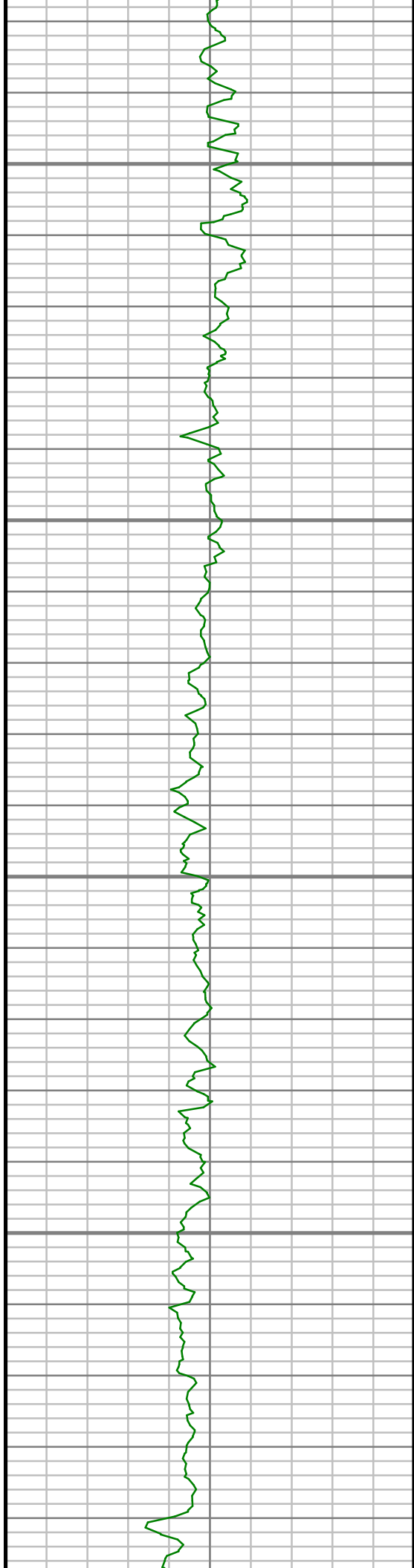
6200

6250

6300

6350



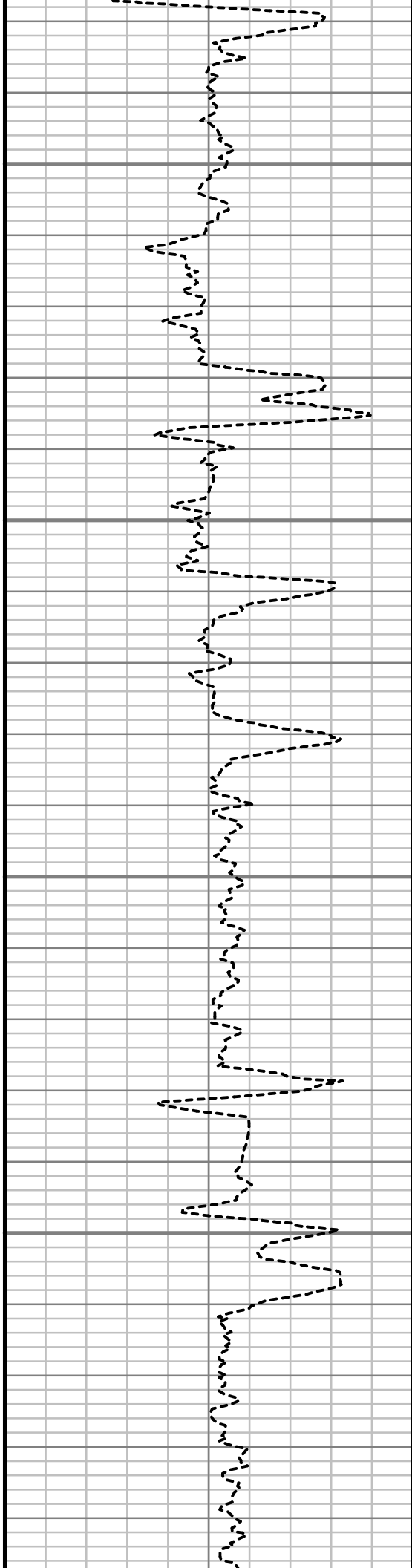


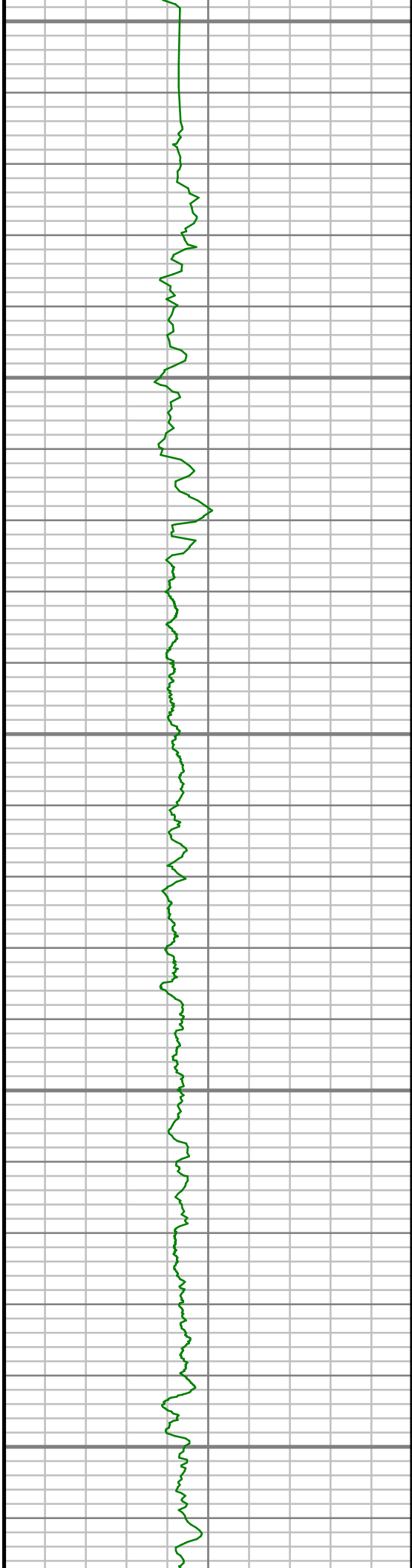
6400

6450

6500

6550





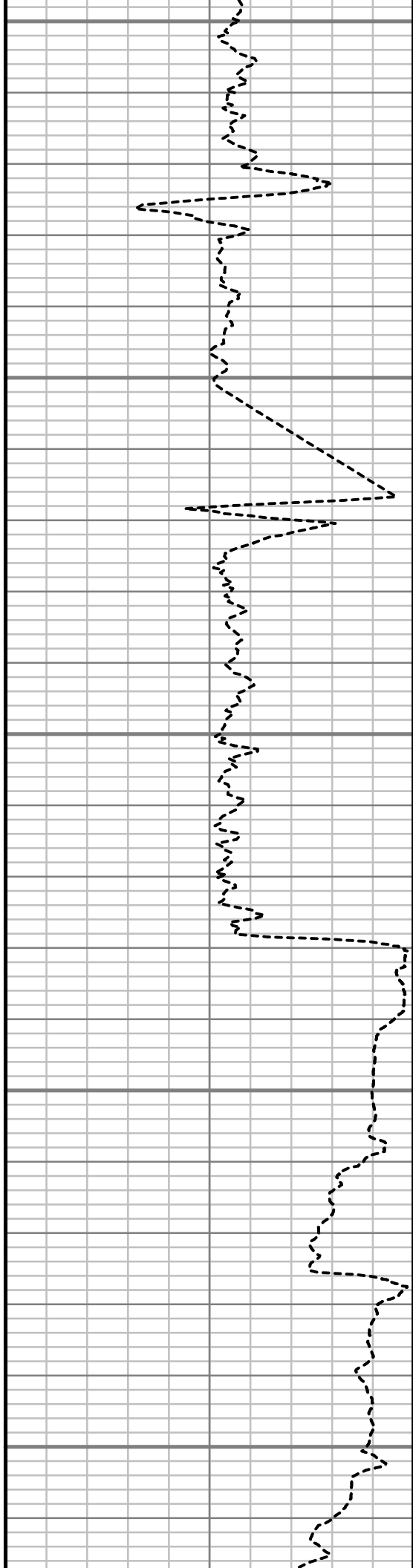
6600

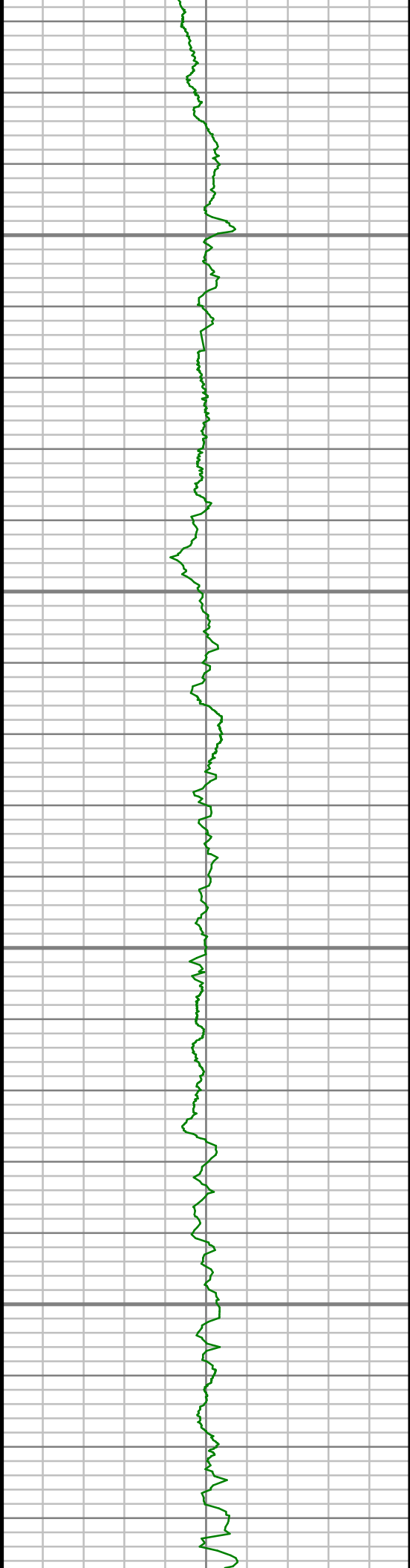
6650

6700

6750

6800



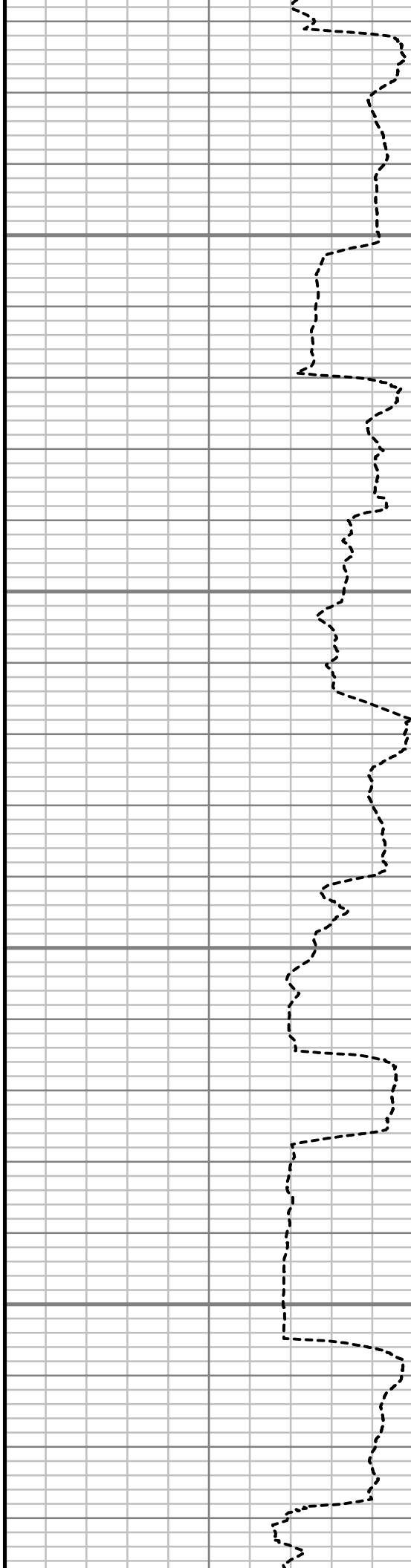


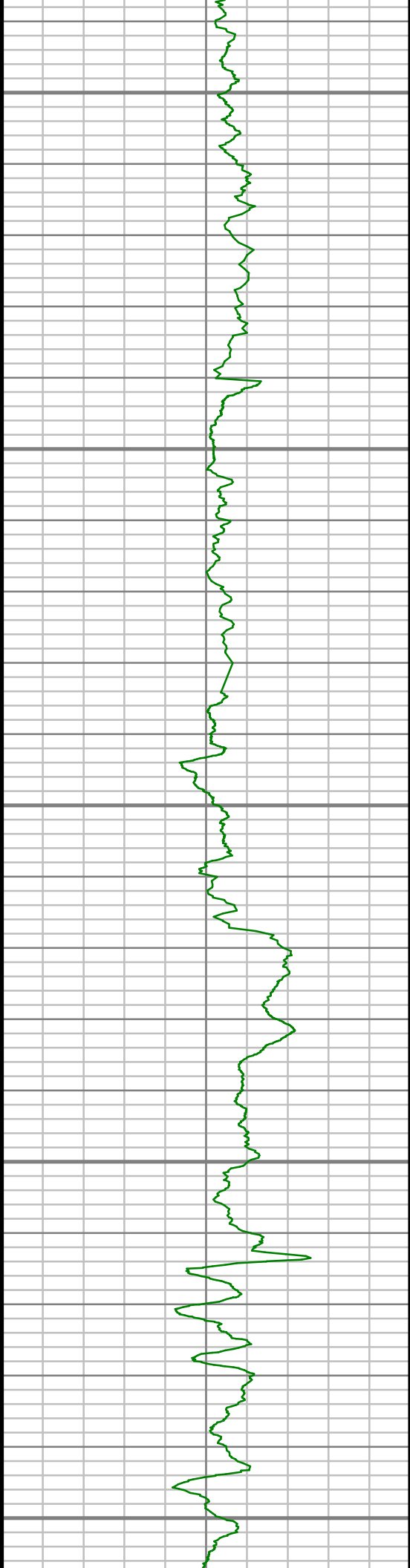
6850

6900

6950

7000





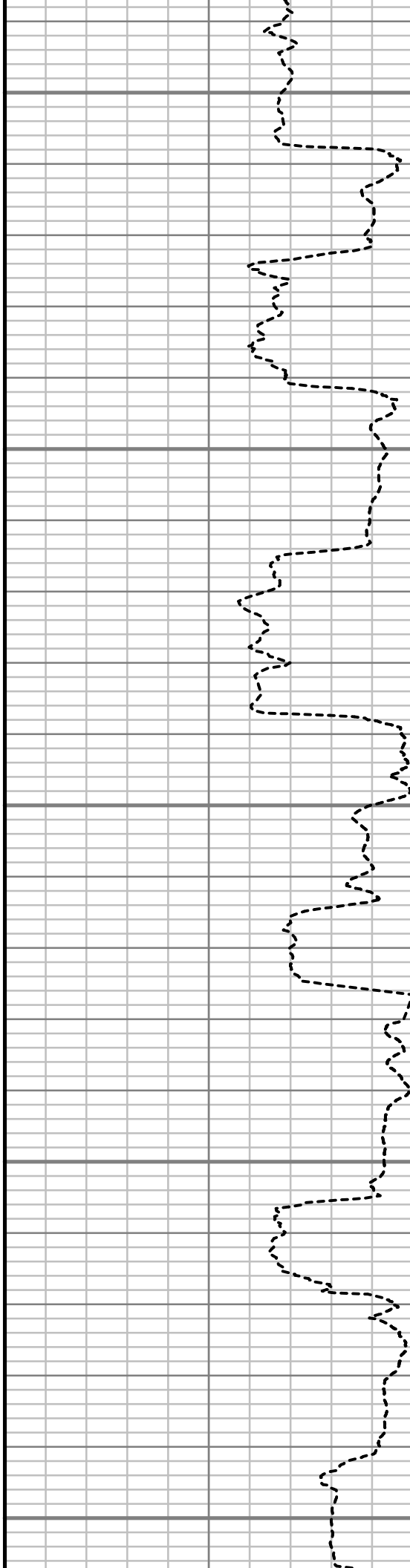
7050

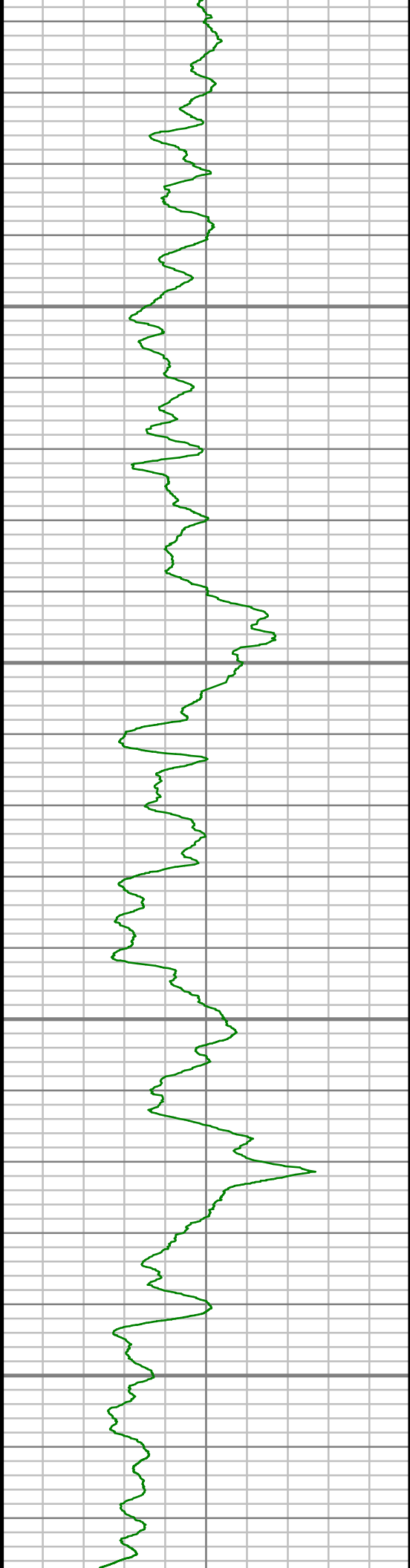
7100

7150

7200

7250



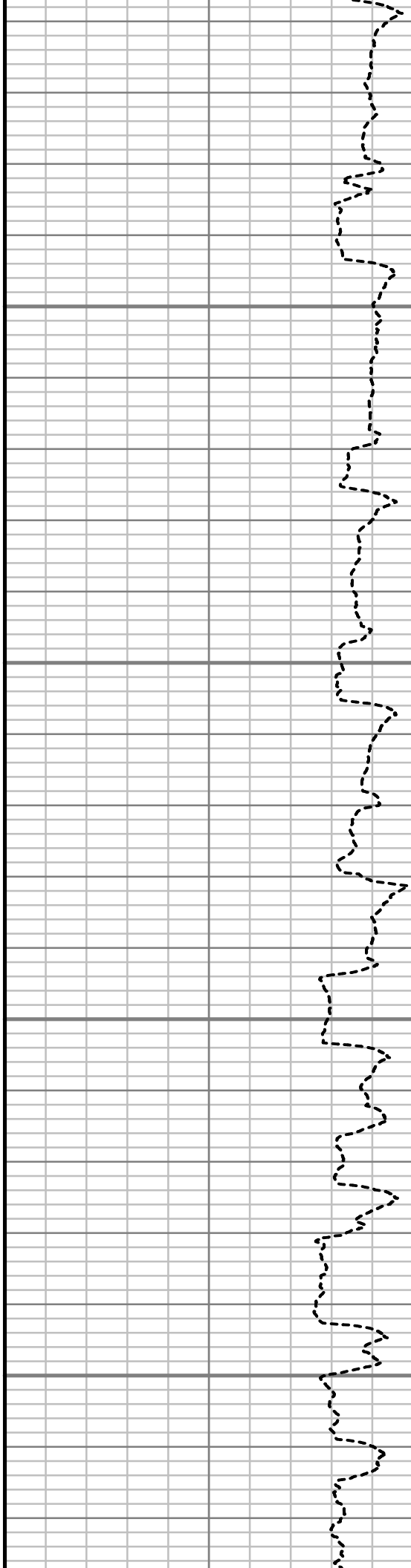


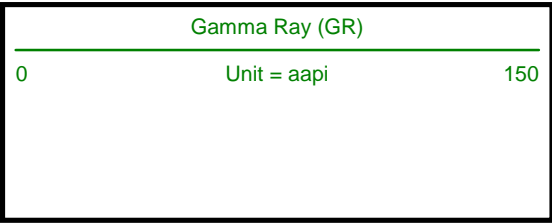
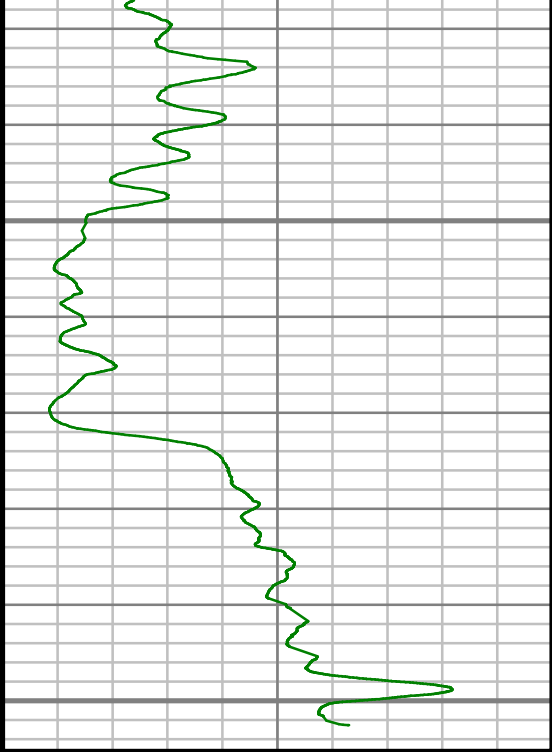
7300

7350

7400

7450

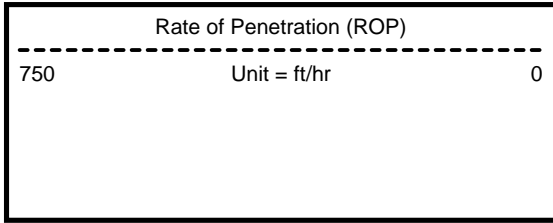
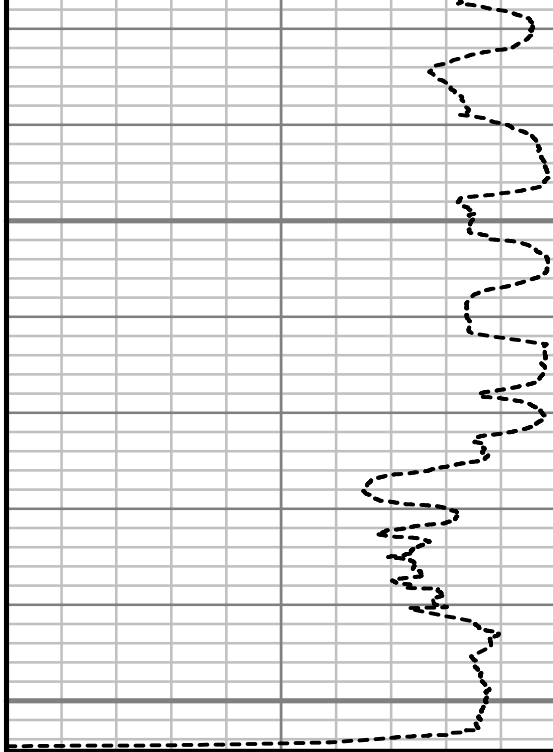




7500

7550

TRUE VERTICAL DEPTH
1-240 (ft)



Comments

MWD Survey Report

Well Location	McCONAHAY
Well Name	McCONAHAY 1B-34H-H266
Survey Date	4/14/2014
Latitude	40°5'52.872"N
Longitude	104°45'27.828"W
Btotal	52590 nT
Dip	66.70 deg
Magnetic Declination	8.50 deg
North Reference	True North
Grid Correction	None
Depth Reference	RKB (13.00 ft)
Calculation Method	Minimum Curvature
Section (VS) Ref	0.00N (ft), 0.00E (ft), 256.00Azim (deg)
Operator(s)	ALI NEJAD, JEFFREY SMITH, MARK SMITH

Well Notes

SURVEYS FROM 100 FT. - 1050 FT. WERE ACQUIRED BY VES MS GYRO.

SURVEYS FROM 1188 FT. - 11442 FT. WERE ACQUIRED BY SCIENTIFIC DRILLING INTERNATIONAL MWD.

MD	Inc	Azim	TVD	VS	+N/-S	+E/-W	Closure Direction	Closure Distance	DLS
ft	deg	deg	ft	ft	ft	ft	deg	ft	"/100ft
0.00	0.00	0.00	0.00	0.00	0.00	0.00	0.00	0.00	Invalid
100.00	0.36	163.36	100.00	-0.01	-0.30	0.09	163.36	0.31	0.36
200.00	0.29	148.77	200.00	-0.10	-0.82	0.31	159.18	0.88	0.11
300.00	0.39	125.88	300.00	-0.40	-1.23	0.72	149.81	1.43	0.17
400.00	1.18	79.78	399.99	-1.64	-1.25	2.01	121.93	2.37	0.95
500.00	2.41	82.30	499.94	-4.76	-0.79	5.10	98.76	5.16	1.23
600.00	3.57	67.53	599.80	-9.93	0.69	10.07	86.11	10.09	1.38
700.00	5.19	66.61	699.50	-17.47	3.67	17.09	77.88	17.48	1.62
800.00	6.82	73.32	798.95	-27.87	7.17	26.93	75.09	27.87	1.77
900.00	7.40	79.54	898.19	-40.23	10.04	38.95	75.54	40.23	0.96
1000.00	8.26	77.48	997.25	-53.84	12.77	52.30	76.28	53.84	0.90
1050.00	8.25	77.09	1046.73	-61.01	14.35	59.30	76.40	61.01	0.11
1188.00	6.46	81.40	1183.59	-78.64	17.72	76.63	76.98	78.65	1.36
1373.00	6.02	76.11	1367.50	-98.70	21.61	96.33	77.36	98.72	0.39
1559.00	5.64	69.35	1552.54	-117.53	27.17	114.35	76.63	117.53	0.42
1745.00	5.68	74.50	1737.63	-135.82	32.86	131.78	76.00	135.82	0.27
1931.00	6.05	84.56	1922.66	-154.71	36.25	150.41	76.45	154.72	0.59
2122.00	5.95	76.90	2112.62	-174.56	39.45	170.07	76.94	174.59	0.42
2312.00	5.50	66.76	2301.68	-193.40	45.28	188.04	76.46	193.41	0.58

MD	Inc	Azim	TVD	VS	+N/-S	+E/-W	Closure Direction	Closure Distance	DLS
ft	deg	deg	ft	ft	ft	ft	deg	ft	°/100ft
2503.00	4.50	57.38	2491.95	-209.54	52.93	202.76	75.37	209.55	0.67
2694.00	5.23	59.62	2682.26	-225.00	61.37	216.58	74.18	225.11	0.40
2884.00	7.64	74.01	2871.06	-245.93	69.23	236.20	73.66	246.14	1.51
3075.00	6.95	80.28	3060.52	-270.15	74.68	259.80	73.96	270.32	0.55
3265.00	6.84	86.86	3249.15	-292.73	77.24	282.43	74.70	292.80	0.42
3456.00	5.32	77.07	3439.07	-312.75	79.85	302.42	75.21	312.78	0.96
3646.00	4.71	62.37	3628.35	-329.14	85.44	317.91	74.96	329.19	0.74
3837.00	5.50	77.91	3818.60	-345.92	91.00	333.82	74.75	346.00	0.83
4027.00	5.00	72.59	4007.80	-363.29	95.38	350.63	74.78	363.37	0.37
4218.00	4.72	79.00	4198.12	-379.44	99.37	366.28	74.82	379.52	0.32
4409.00	6.67	74.35	4388.17	-398.37	103.86	384.67	74.89	398.45	1.05
4599.00	5.73	65.37	4577.06	-418.72	110.79	403.92	74.66	418.84	0.71
4790.00	6.07	45.57	4767.07	-436.81	121.84	419.81	73.82	437.13	1.07
4981.00	8.96	60.42	4956.42	-459.85	136.25	439.96	72.79	460.58	1.81
5171.00	8.95	75.07	5144.13	-488.88	147.37	467.11	72.49	489.80	1.20
5362.00	8.57	82.35	5332.91	-517.88	153.09	495.56	72.83	518.67	0.61
5552.00	5.73	76.63	5521.42	-541.43	157.16	518.82	73.15	542.11	1.54
5743.00	5.78	74.31	5711.45	-560.58	161.97	537.36	73.23	561.24	0.13

MD	Inc	Azim	TVD	VS	+N/-S	+E/-W	Closure Direction	Closure Distance	DLS
ft	deg	deg	ft	ft	ft	ft	deg	ft	°/100ft
5934.00	3.67	75.30	5901.79	-576.32	166.12	552.54	73.27	576.97	1.11
6125.00	4.33	66.58	6092.33	-589.53	170.54	565.06	73.21	590.23	0.47
6315.00	6.29	74.65	6281.51	-607.00	176.14	581.67	73.15	607.75	1.10
6506.00	4.31	100.81	6471.71	-623.98	177.56	598.81	73.48	624.58	1.61
6696.00	2.66	75.32	6661.36	-634.88	177.34	610.10	73.79	635.35	1.17
6743.00	2.73	76.66	6708.31	-637.09	177.88	612.24	73.80	637.56	0.19
6791.00	0.46	282.10	6756.29	-638.06	178.18	613.17	73.80	638.53	6.55
6838.00	5.63	250.83	6803.21	-635.59	177.46	610.80	73.80	636.06	11.16
6887.00	10.40	249.04	6851.72	-628.80	175.09	604.40	73.84	629.25	9.74
6934.00	14.11	251.91	6897.64	-618.87	171.79	594.98	73.89	619.29	8.00
6982.00	16.44	251.02	6943.94	-606.26	167.76	583.00	73.95	606.65	4.88
7029.00	18.20	254.58	6988.81	-592.30	163.65	569.63	73.97	592.67	4.37
7077.00	21.61	256.78	7033.94	-575.96	159.63	553.79	73.92	576.34	7.26
7124.00	24.36	256.09	7077.20	-557.61	155.32	535.95	73.84	558.01	5.89
7172.00	28.27	259.06	7120.22	-536.35	150.78	515.18	73.69	536.79	8.59
7219.00	29.93	263.63	7161.29	-513.61	147.37	492.59	73.34	514.16	5.90
7268.00	33.03	266.78	7203.08	-488.37	145.26	467.10	72.73	489.17	7.17
7315.00	36.15	268.51	7241.77	-462.24	144.18	440.45	71.87	463.45	6.95

MD	Inc	Azim	TVD	VS	+N/-S	+E/-W	Closure Direction	Closure Distance	DLS
ft	deg	deg	ft	ft	ft	ft	deg	ft	°/100ft
7363.00	40.90	267.41	7279.31	-433.00	143.10	410.58	70.78	434.80	10.01
7410.00	46.24	263.21	7313.35	-401.05	140.40	378.32	69.64	403.53	12.93
7459.00	53.01	264.17	7345.07	-364.08	136.31	341.24	68.23	367.46	13.88
7506.00	58.55	266.02	7371.50	-325.73	133.01	302.53	66.27	330.48	12.23
7554.00	62.32	269.78	7395.18	-284.90	131.51	260.83	63.24	292.11	10.40
7601.00	65.00	274.45	7416.04	-244.46	133.08	218.76	58.69	256.06	10.57
7649.00	66.52	276.69	7435.75	-203.22	137.33	175.20	51.91	222.61	5.31
7696.00	68.67	278.08	7453.66	-162.77	142.92	132.11	42.75	194.63	5.32
7744.00	70.45	277.84	7470.43	-121.05	149.15	87.57	30.42	172.96	3.74
7791.00	72.93	278.16	7485.19	-79.69	155.36	43.39	15.60	161.31	5.33
7840.00	75.95	276.88	7498.33	-35.78	161.54	-3.40	358.79	161.57	6.66
7887.00	78.13	274.09	7508.87	7.40	165.91	-48.99	343.55	172.99	7.41
7935.00	82.72	273.03	7516.85	52.51	168.85	-96.22	330.32	194.34	9.82
8050.00	87.08	271.20	7527.07	162.52	173.07	-210.65	309.41	272.63	4.10
8145.00	87.75	271.68	7531.36	254.00	175.46	-305.52	299.87	352.32	0.87
8241.00	88.42	271.30	7534.57	346.46	177.96	-401.44	293.91	439.11	0.80
8336.00	89.46	271.71	7536.32	437.98	180.46	-496.39	289.98	528.17	1.18
8431.00	88.42	270.83	7538.08	529.61	182.57	-591.34	287.16	618.89	1.44

MD	Inc	Azim	TVD	VS	+N/-S	+E/-W	Closure Direction	Closure Distance	DLS
ft	deg	deg	ft	ft	ft	ft	deg	ft	°/100ft
8526.00	90.10	271.17	7539.30	621.36	184.23	-686.32	285.03	710.61	1.80
8622.00	89.19	270.14	7539.89	714.24	185.33	-782.31	283.33	803.96	1.43
8717.00	90.27	270.07	7540.34	806.37	185.50	-877.31	281.94	896.70	1.13
8812.00	92.45	270.89	7538.08	898.32	186.29	-972.27	280.85	989.95	2.46
8908.00	90.30	270.53	7535.77	991.14	187.48	-1068.23	279.95	1084.56	2.27
9003.00	89.13	269.48	7536.25	1083.31	187.49	-1163.22	279.16	1178.24	1.66
9098.00	90.20	271.41	7536.81	1175.30	188.23	-1258.21	278.51	1272.21	2.33
9193.00	89.40	270.44	7537.14	1267.09	189.76	-1353.20	277.98	1366.44	1.33
9289.00	89.29	269.88	7538.24	1360.17	190.03	-1449.19	277.47	1461.60	0.60
9384.00	90.57	270.21	7538.35	1452.33	190.11	-1544.19	277.02	1555.85	1.39
9479.00	90.24	269.67	7537.68	1544.53	190.01	-1639.19	276.61	1650.16	0.67
9575.00	89.63	268.78	7537.79	1637.98	188.71	-1735.18	276.21	1745.41	1.12
9670.00	89.46	269.00	7538.54	1730.58	186.87	-1830.15	275.83	1839.67	0.29
9765.00	89.87	269.26	7539.10	1823.10	185.42	-1925.14	275.50	1934.05	0.50
9860.00	90.34	269.02	7538.93	1915.61	183.99	-2020.13	275.20	2028.49	0.55
9956.00	89.40	268.16	7539.16	2009.30	181.62	-2116.10	274.91	2123.88	1.33
10051.00	90.07	268.88	7539.60	2102.04	179.16	-2211.07	274.63	2218.31	1.04
10146.00	90.37	270.04	7539.24	2194.43	178.26	-2306.06	274.42	2312.94	1.26

MD	Inc	Azim	TVD	VS	+N/-S	+E/-W	Closure Direction	Closure Distance	DLS
ft	deg	deg	ft	ft	ft	ft	deg	ft	"/100ft
10241.00	90.50	270.32	7538.52	2286.54	178.56	-2401.06	274.25	2407.69	0.33
10337.00	88.82	271.85	7539.08	2379.22	180.38	-2497.03	274.13	2503.54	2.37
10432.00	88.05	271.17	7541.67	2470.73	182.88	-2591.96	274.04	2598.40	1.09
10527.00	89.23	271.23	7543.93	2562.37	184.87	-2686.91	273.94	2693.26	1.24
10622.00	90.47	272.44	7544.18	2653.76	187.92	-2781.86	273.86	2788.20	1.82
10717.00	91.31	271.76	7542.70	2745.03	191.40	-2876.78	273.81	2883.14	1.14
10812.00	90.94	271.15	7540.84	2836.57	193.81	-2971.73	273.73	2978.05	0.75
10908.00	89.40	271.04	7540.56	2929.26	195.65	-3067.71	273.65	3073.94	1.61
11003.00	88.56	270.41	7542.25	3021.12	196.85	-3162.69	273.56	3168.81	1.11
11098.00	89.03	270.55	7544.26	3113.08	197.64	-3257.66	273.47	3263.65	0.52
11193.00	89.66	269.31	7545.34	3205.28	197.52	-3352.65	273.37	3358.47	1.47
11289.00	89.09	269.08	7546.38	3298.74	196.17	-3448.64	273.26	3454.21	0.64
11384.00	88.05	268.34	7548.75	3391.38	194.04	-3543.58	273.13	3548.89	1.35
11442.00	87.62	268.46	7550.94	3447.99	192.42	-3601.52	273.06	3606.66	0.78

MD	Inc	Azim	TVD	VS	+N/-S	+E/-W	Closure Direction	Closure Distance	DLS
ft	deg	deg	ft	ft	ft	ft	deg	ft	°/100ft

5" = 100' FEET TVD