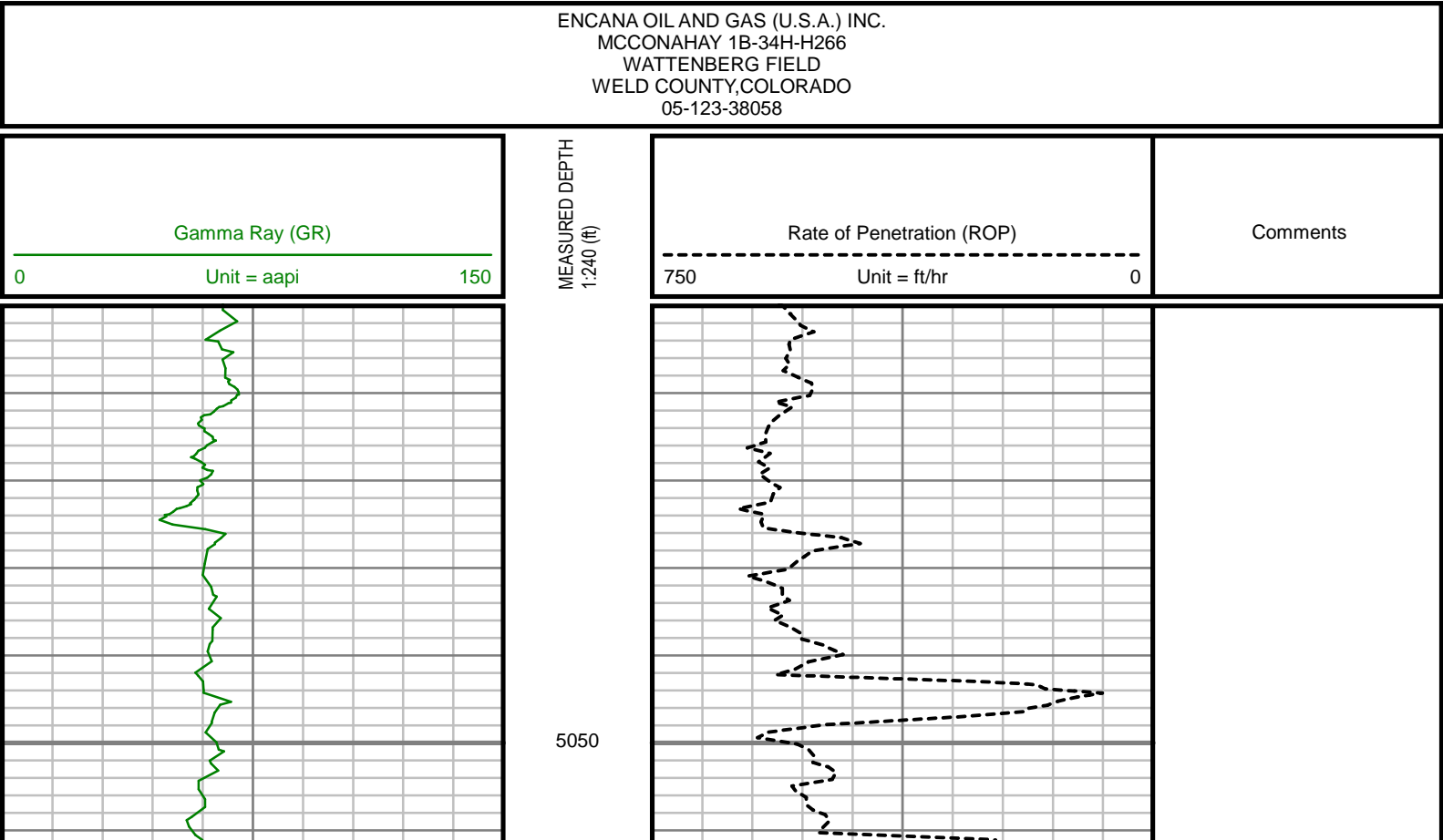
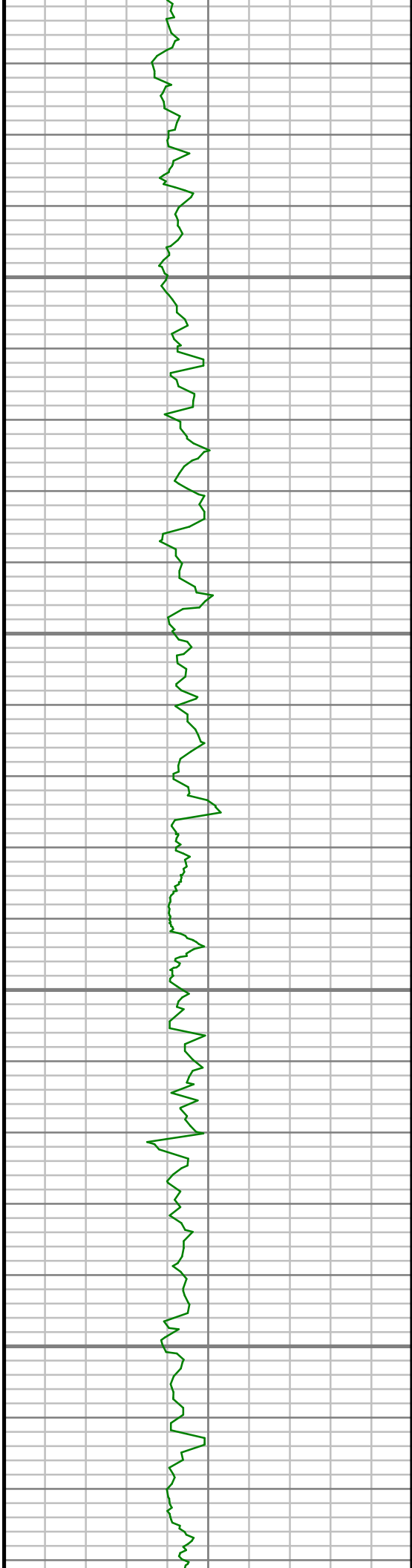




Remarks
ENCANA OIL & GAS (U.S.A.) INC PRODUCTION AFE# 13178366
SCIENTIFIC DRILLING INTERNATIONAL JOB# 138883
ALL REFERENCES IN THE DEPTH TRACK ARE AT BIT DEPTH.
ALL DATA IS MEMORY DATA UNLESS STATED OTHERWISE.
FLAT AVERAGE FILTER OF 1.00 FT APPLIED TO GAMMA RAY CURVE
FLAT AVERAGE FILTER OF 1.00 FT APPLIED TO RATE OF PENETRATION CURVE
RUN #1: MWD / DIRECTIONAL RUN
SENSORS S/N: CONT = 814 / MWD EYE = 0429
BIT TO SENSOR OFFSET: SURVEY = 59.07 FT.
RUN #2: MWD / GAMMA RAY LOGGING RUN
SENSORS S/N: PULSER = 128-221/ CONT = 114 / MWD EYE = 862 / GAMMA RAY = 1050
BIT TO SENSOR OFFSETS: SURVEY = 66.26 FT. / GAMMA RAY = 53.05 FT.
RUN #3: MWD / GAMMA RAY LOGGING RUN
SENSORS S/N: PULSER = 78-1085 / CONT = 831 / MWD EYE = 0429 / GAMMA RAY = 1074
BIT TO SENSOR OFFSETS: SURVEY = 65.62 FT. / GAMMA RAY = 52.37 FT.
MNEMONICS LIST:
GR = GAMMA RAY
ROP = RATE OF PENETRATION

All interpretations are opinions based on inferences from electrical or other measurements and we cannot, and do not guarantee the accuracy or correctness of any interpretations, and we shall not, except in the case of gross or willful negligence on our part, be liable or responsible for any loss, costs, damages or expenses incurred or sustained by anyone resulting from any interpretation made by any of our officers, agents or employees. These interpretations are also subject to our general terms and conditions as set out in our current price schedule.



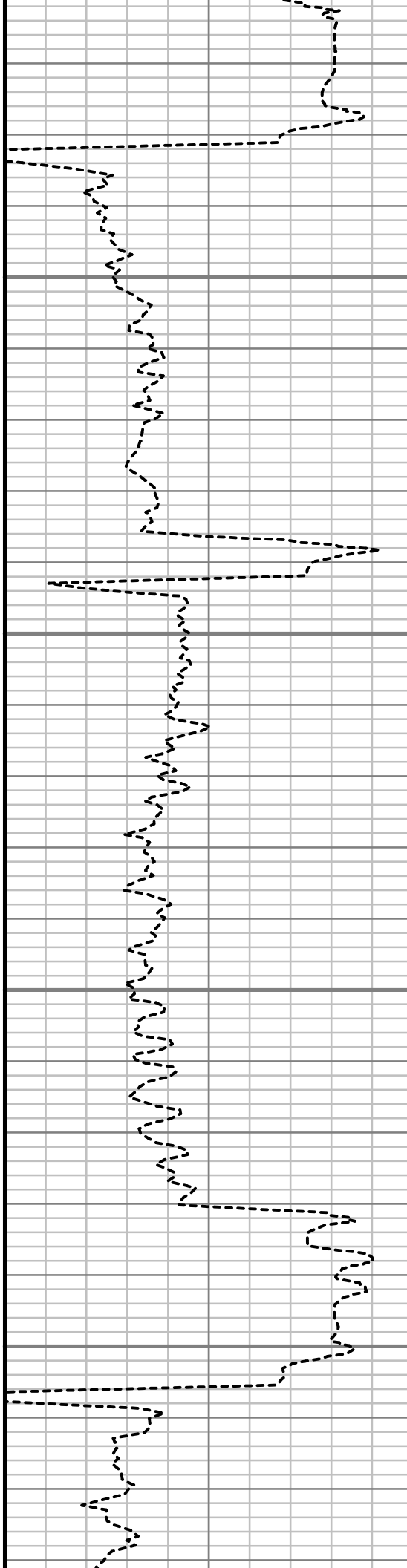


5100

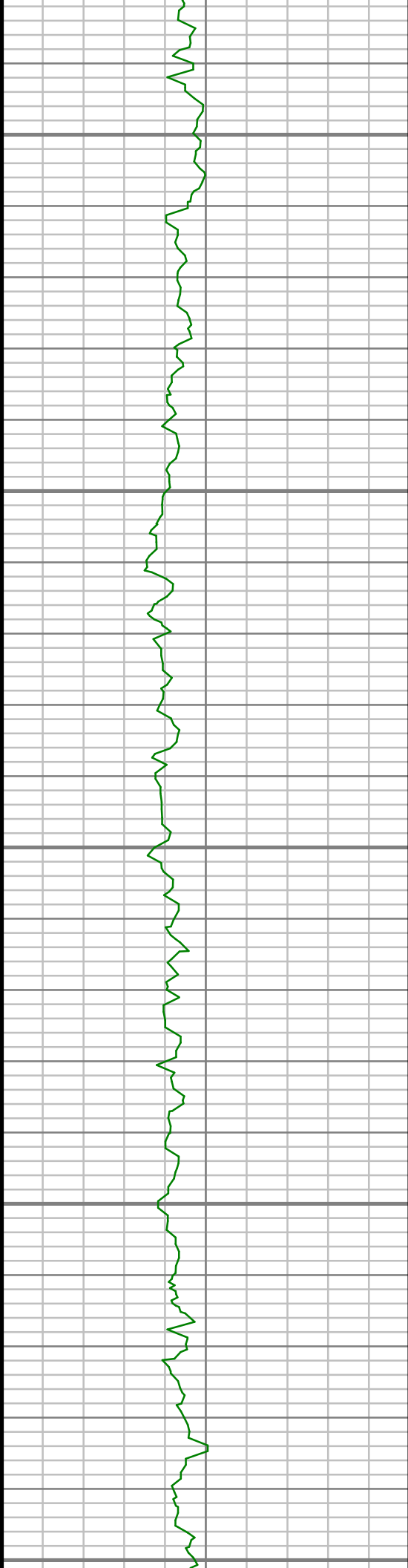
5150

5200

5250



S: 33 MD: 5171.00 ft Inc: 8.95  
deg Az: 75.07 deg TVD:  
5144.13 ft



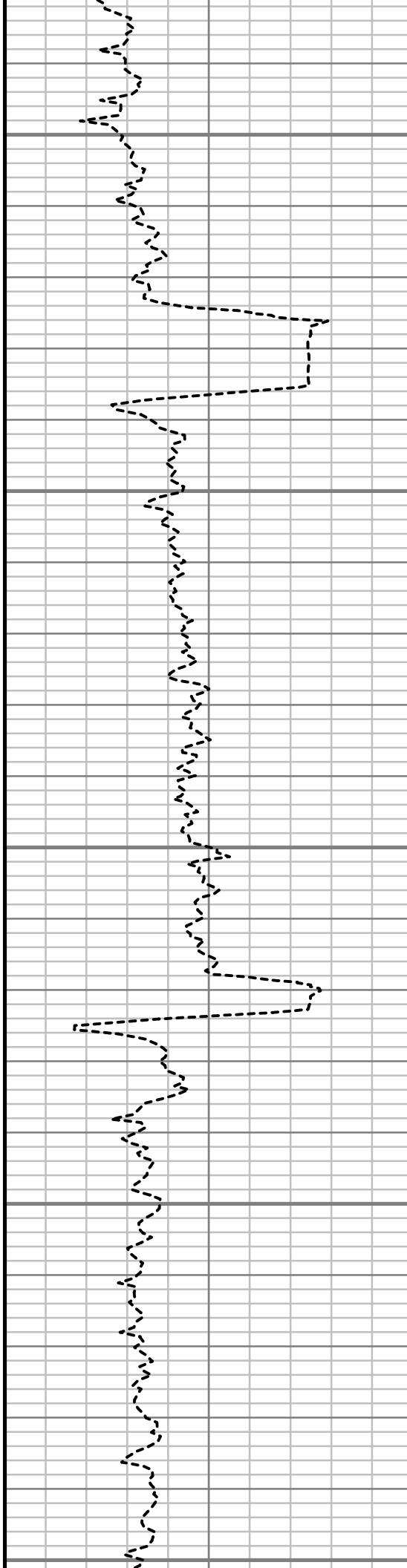
5300

5350

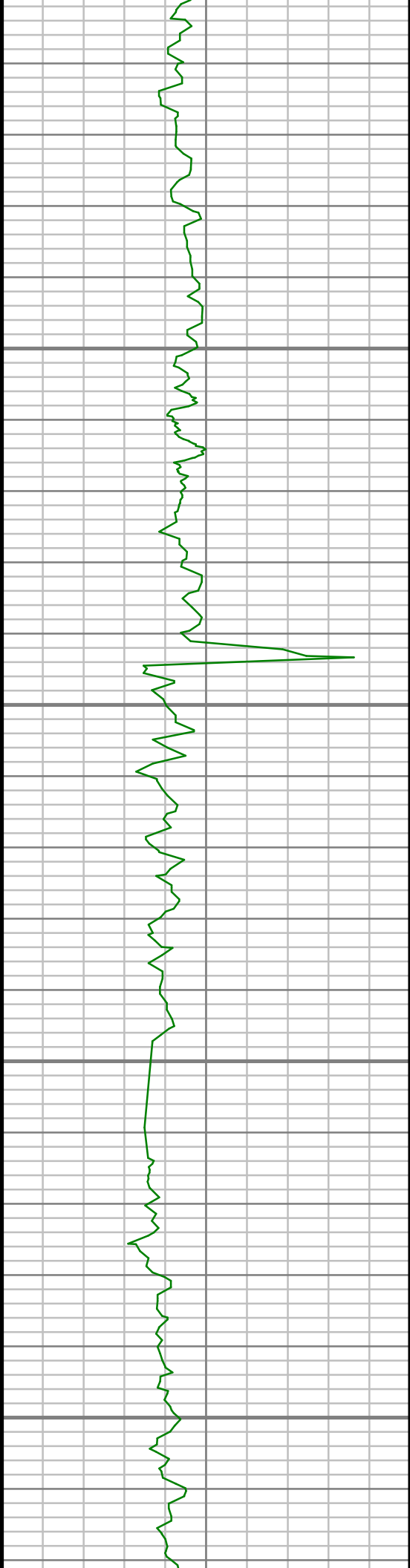
5400

5450

5500



S: 34 MD: 5362.00 ft Inc: 8.57  
deg Az: 82.35 deg TVD:  
5332.91 ft

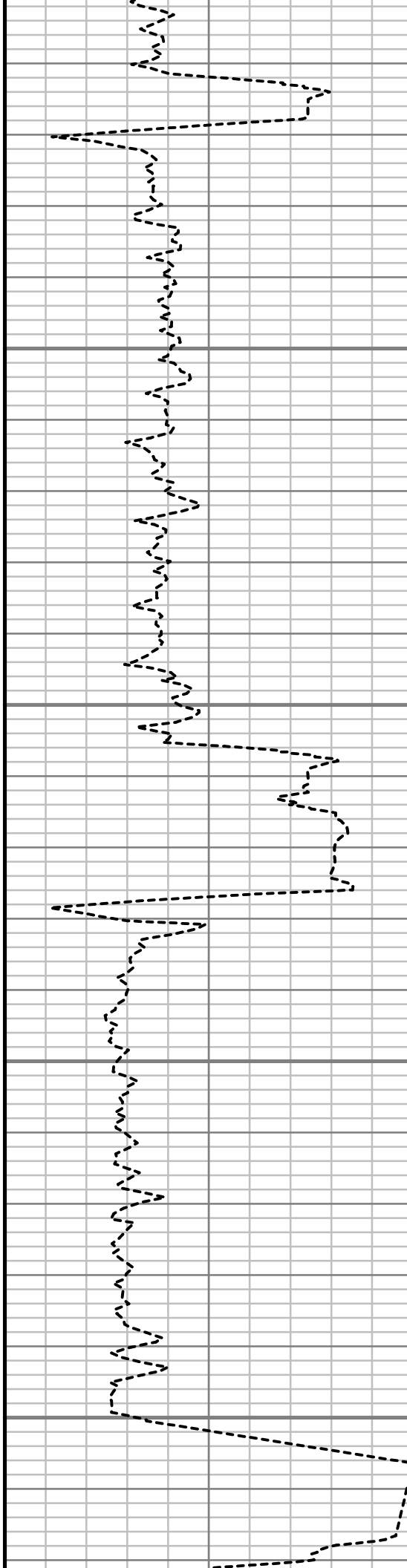


5550

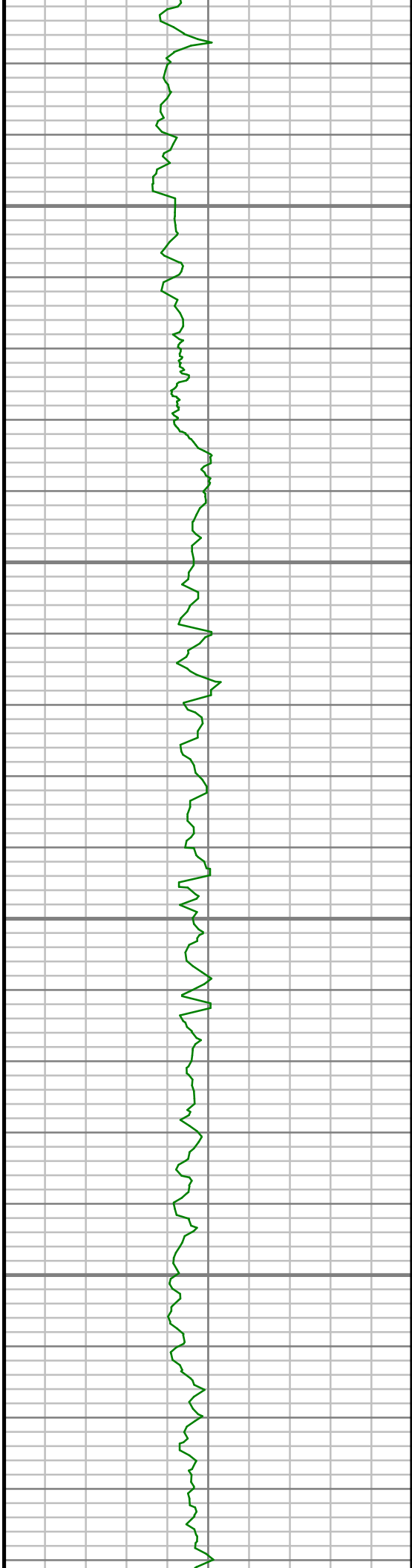
5600

5650

5700



S: 35 MD: 5552.00 ft Inc: 5.73  
deg Az: 76.63 deg TVD:  
5521.42 ft

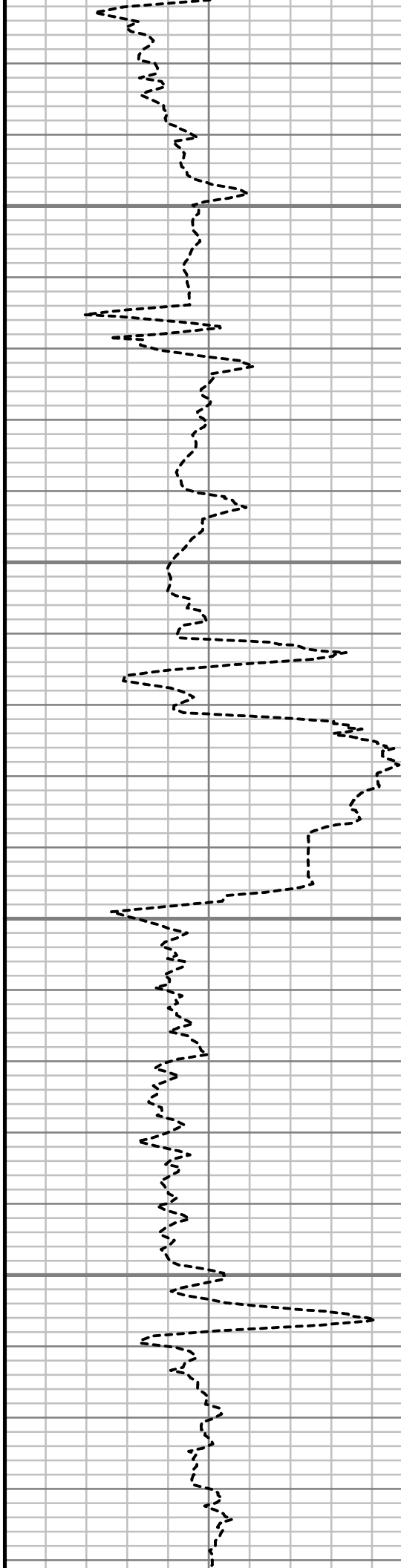


5750

5800

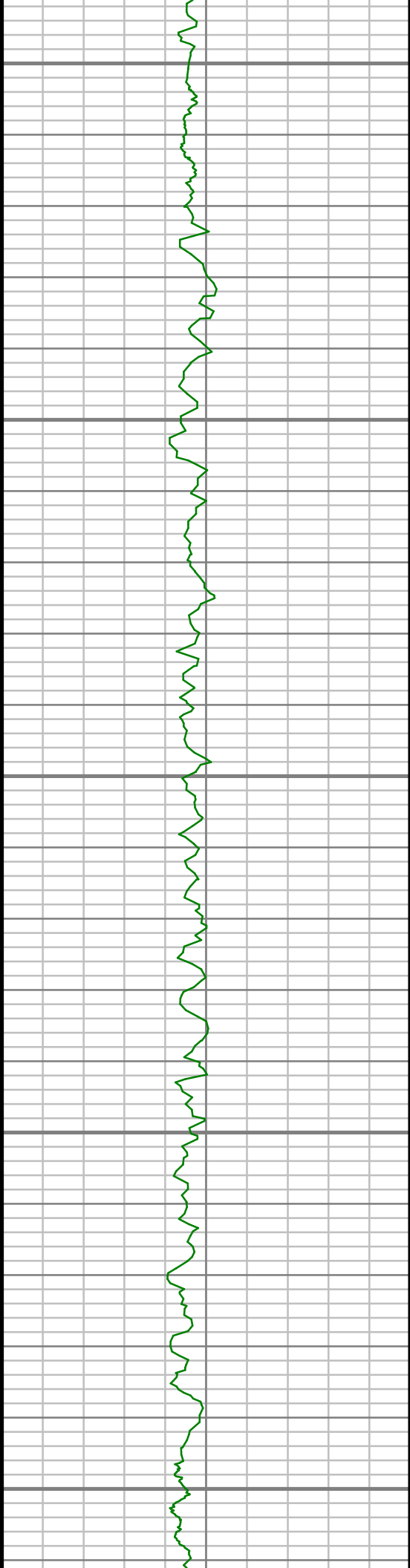
5850

5900



S: 36 MD: 5743.00 ft Inc: 5.78  
deg Az: 74.31 deg TVD:  
5711.45 ft

S: 37 MD: 5934.00 ft Inc: 3.67  
deg Az: 75.30 deg TVD:  
5901.79 ft



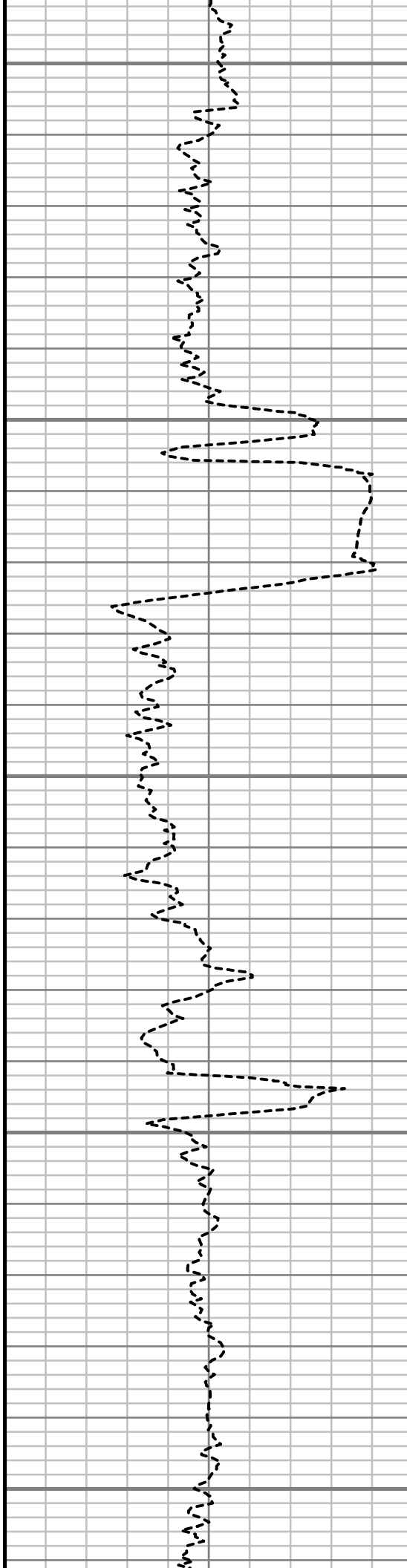
5950

6000

6050

6100

6150



S: 38 MD: 6125.00 ft Inc: 4.33  
deg Az: 66.58 deg TVD:  
6092.33 ft



6200

6250

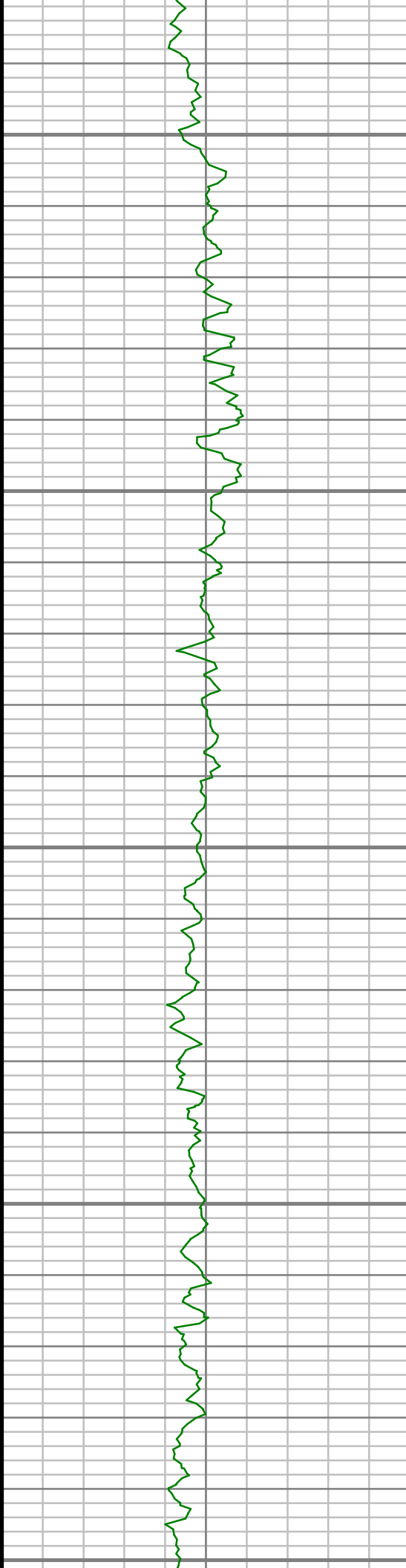
6300

6350



S: 39 MD: 6315.00 ft Inc: 6.29  
deg Az: 74.65 deg TVD:  
6281.51 ft





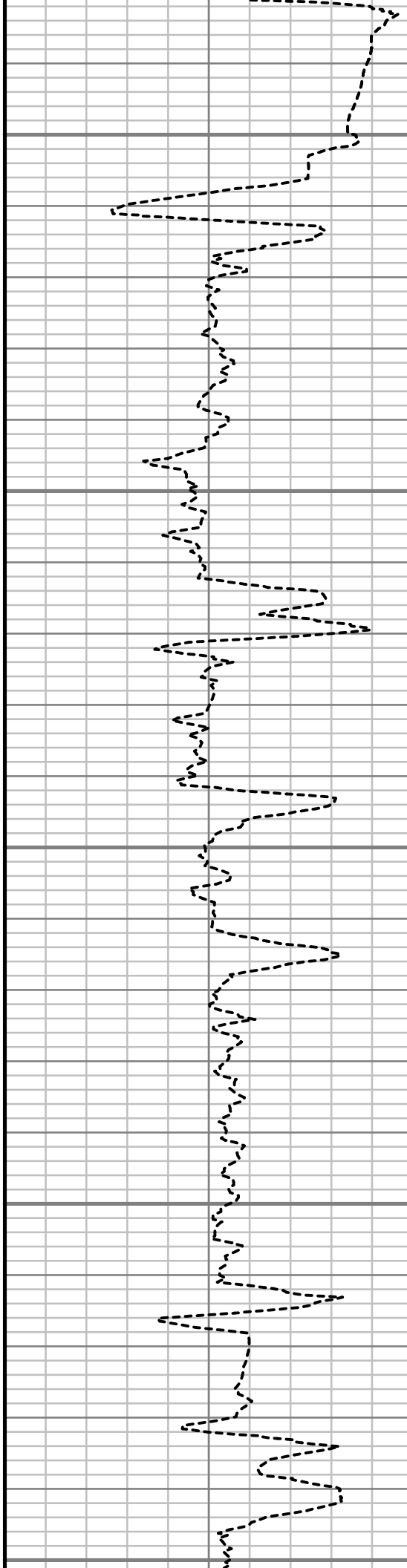
6400

6450

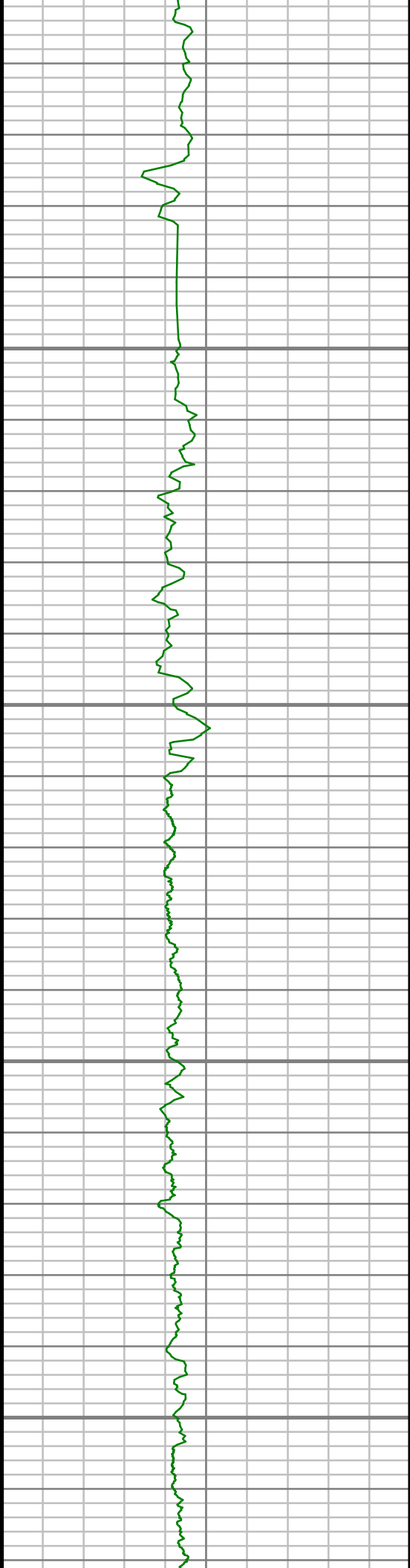
6500

6550

6600



S: 40 MD: 6506.00 ft Inc: 4.31  
deg Az: 100.81 deg TVD:  
6471.71 ft

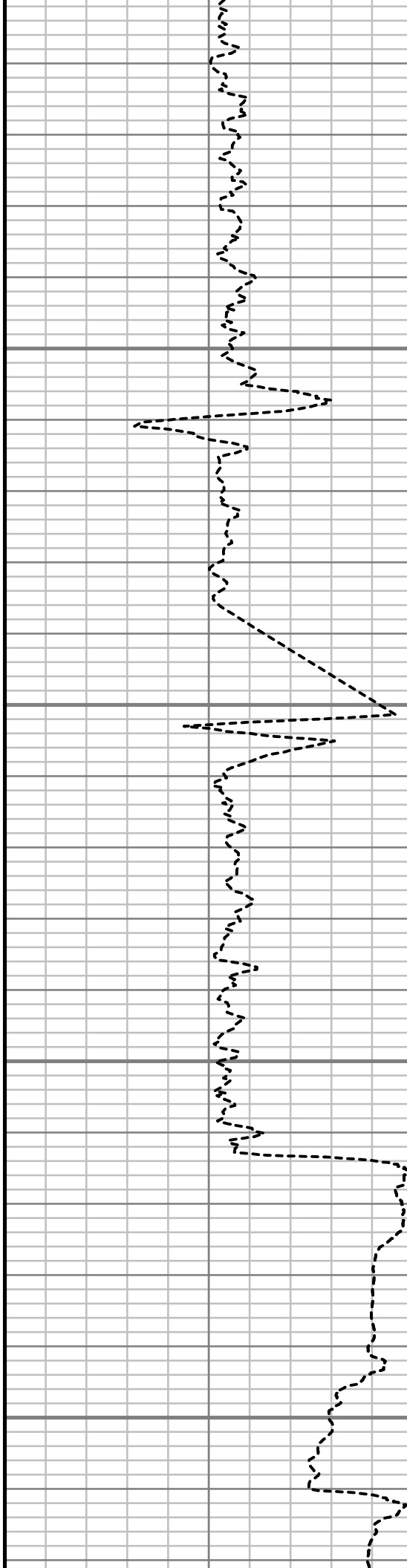


6650

6700

6750

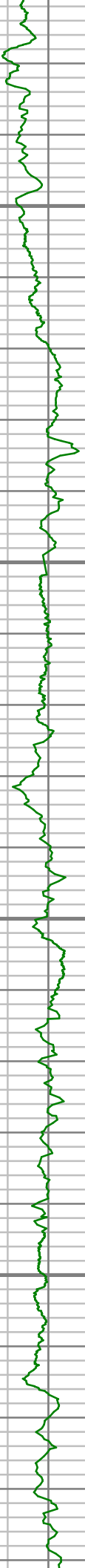
6800



S: 41 MD: 6696.00 ft Inc: 2.66  
deg Az: 75.32 deg TVD:  
6661.36 ft

S: 42 MD: 6743.00 ft Inc: 2.73  
deg Az: 76.66 deg TVD:  
6708.31 ft

S: 43 MD: 6791.00 ft Inc: 0.46  
deg Az: 282.10 deg TVD:  
6756.29 ft

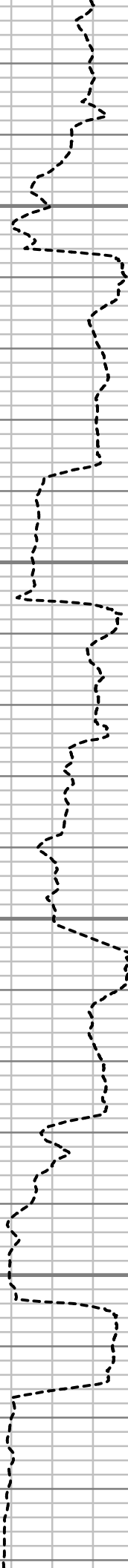


6850

6900

6950

7000



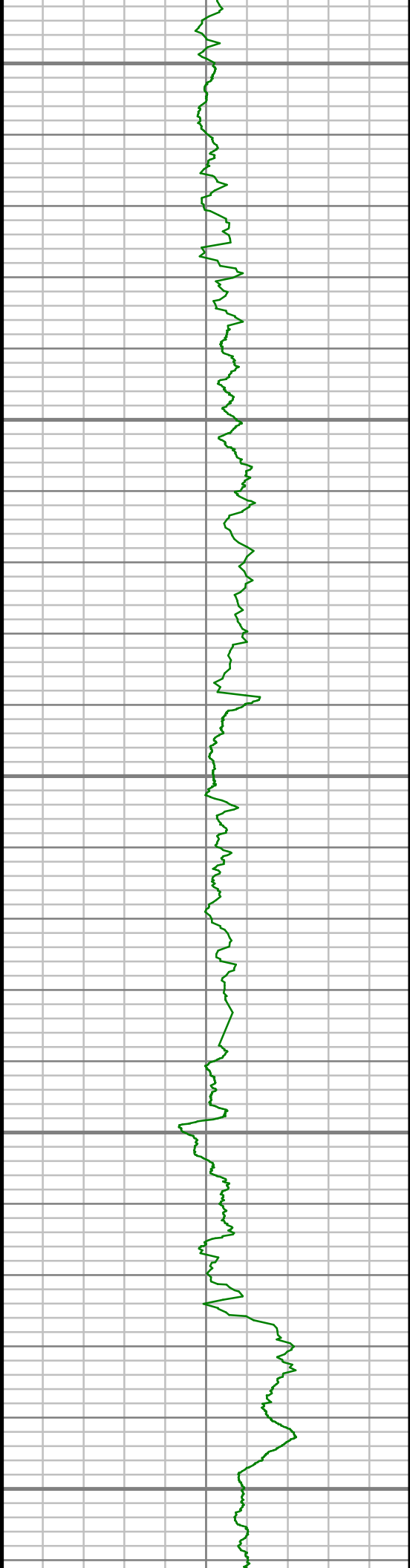
S: 44 MD: 6838.00 ft Inc: 5.63  
deg Az: 250.83 deg TVD:  
6803.21 ft

S: 45 MD: 6887.00 ft Inc: 10.40  
deg Az: 249.04 deg TVD:  
6851.72 ft

S: 46 MD: 6934.00 ft Inc: 14.11  
deg Az: 251.91 deg TVD:  
6897.64 ft

S: 47 MD: 6982.00 ft Inc: 16.44  
deg Az: 251.02 deg TVD:  
6943.94 ft

S: 48 MD: 7029.00 ft Inc: 18.20  
deg Az: 254.58 deg TVD:  
6988.81 ft



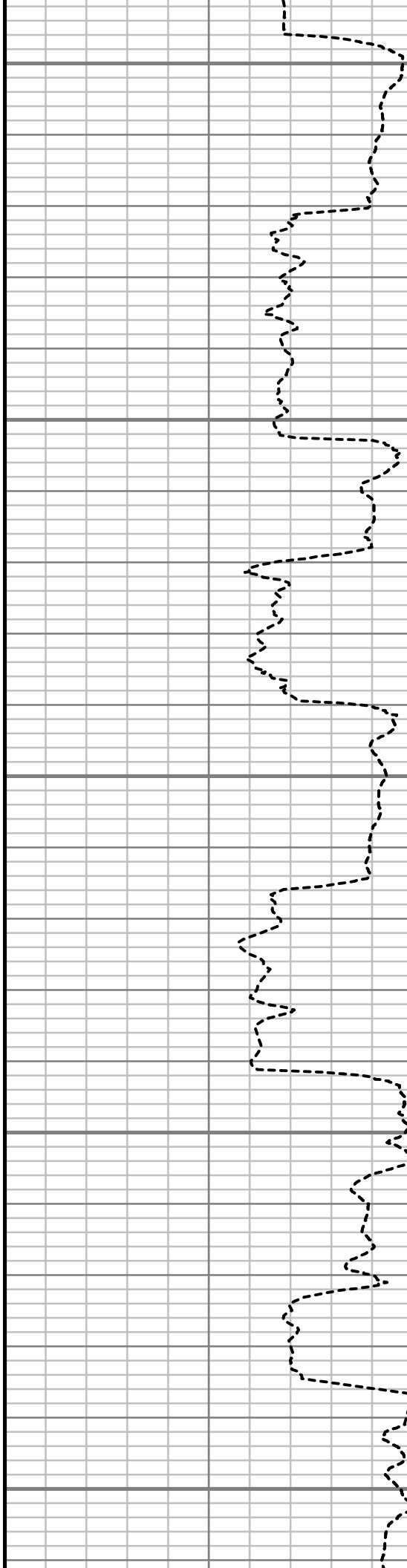
7050

7100

7150

7200

7250

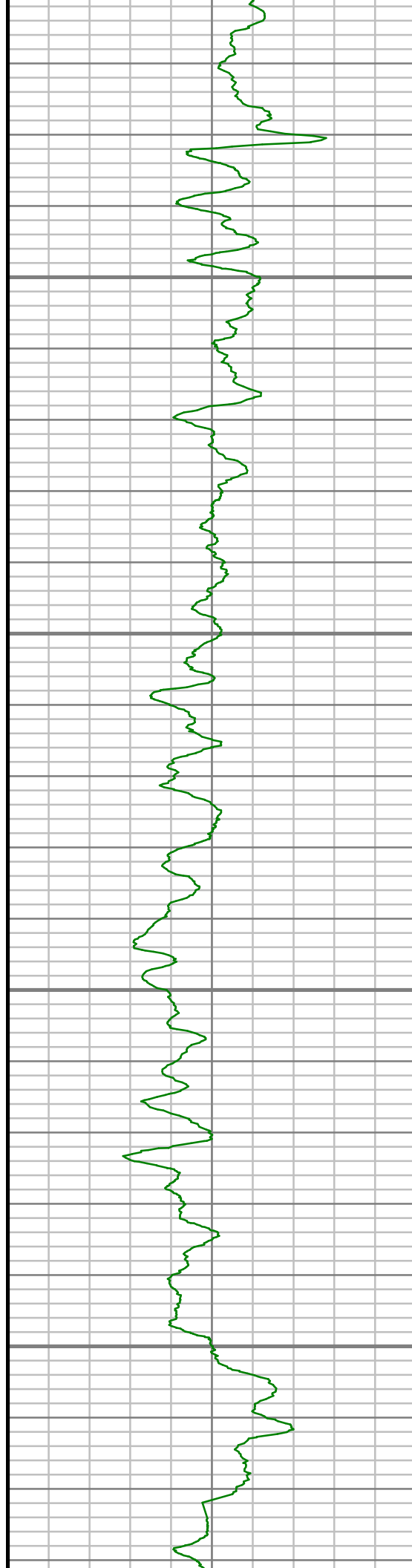


S: 49 MD: 7077.00 ft Inc: 21.61  
deg Az: 256.78 deg TVD:  
7033.94 ft

S: 50 MD: 7124.00 ft Inc: 24.36  
deg Az: 256.09 deg TVD:  
7077.20 ft

S: 51 MD: 7172.00 ft Inc: 28.27  
deg Az: 259.06 deg TVD:  
7120.22 ft

S: 52 MD: 7219.00 ft Inc: 29.93  
deg Az: 263.63 deg TVD:  
7161.29 ft

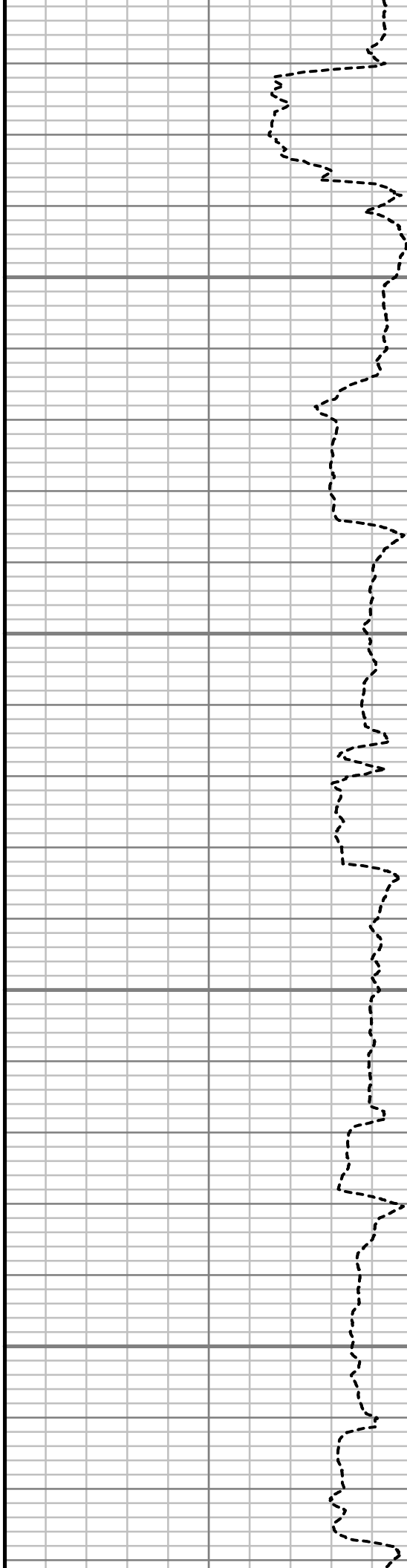


7300

7350

7400

7450



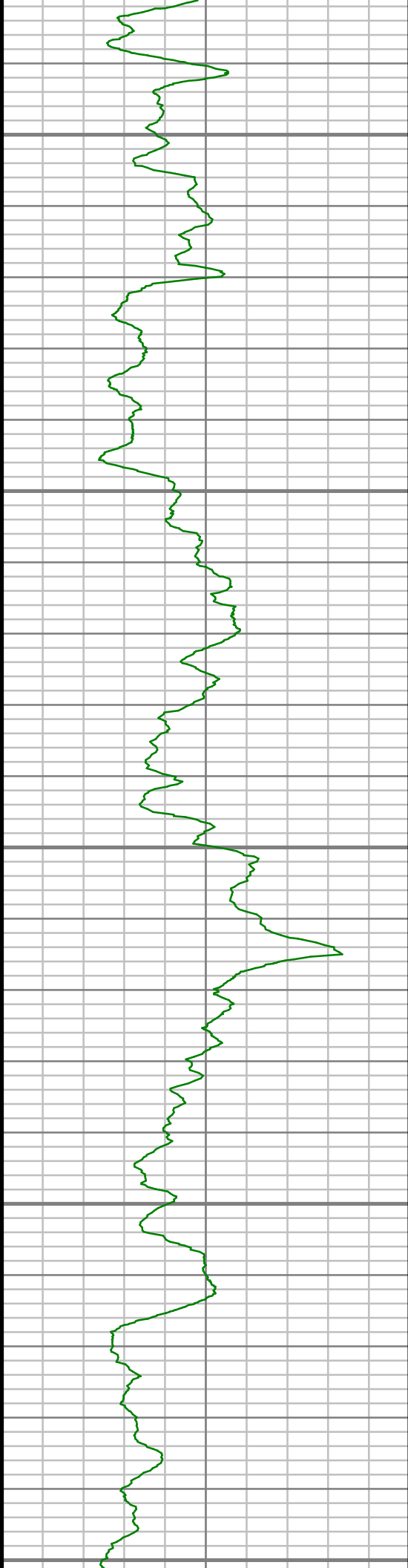
S: 53 MD: 7268.00 ft Inc: 33.03  
deg Az: 266.78 deg TVD:  
7203.08 ft

S: 54 MD: 7315.00 ft Inc: 36.15  
deg Az: 268.51 deg TVD:  
7241.77 ft

S: 55 MD: 7363.00 ft Inc: 40.90  
deg Az: 267.41 deg TVD:  
7279.31 ft

S: 56 MD: 7410.00 ft Inc: 46.24  
deg Az: 263.21 deg TVD:  
7313.35 ft

S: 57 MD: 7459.00 ft Inc: 53.01  
deg Az: 264.17 deg TVD:  
7345.07 ft



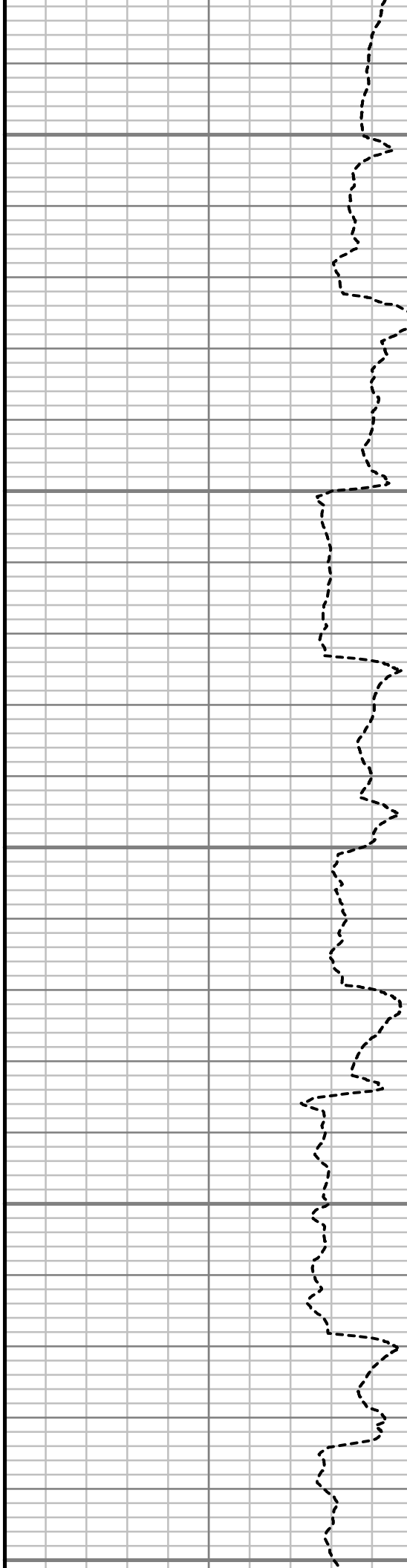
7500

7550

7600

7650

7700



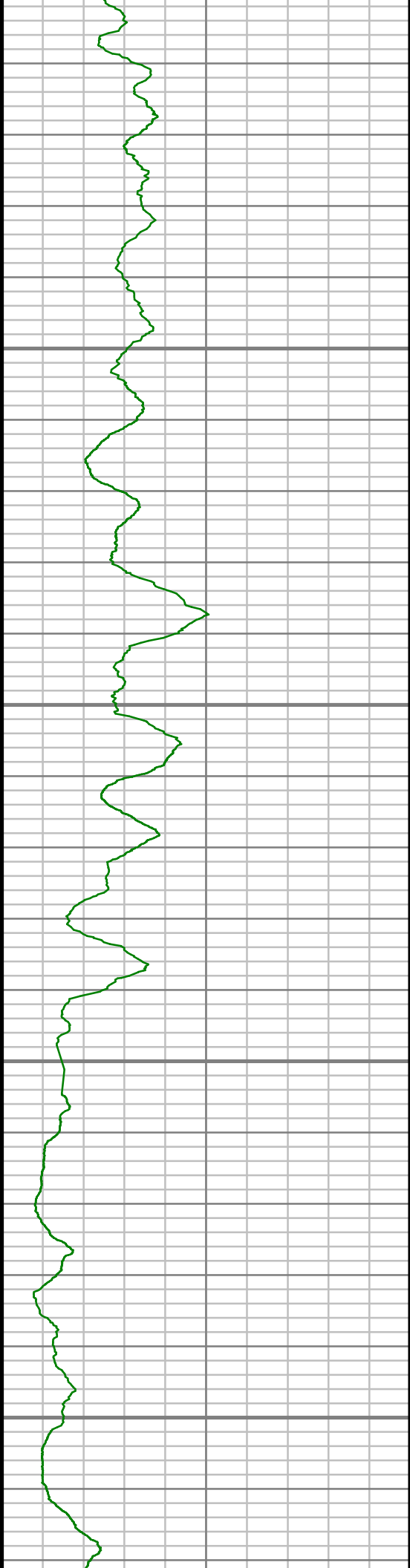
S: 58 MD: 7506.00 ft Inc: 58.55  
deg Az: 266.02 deg TVD:  
7371.50 ft

S: 59 MD: 7554.00 ft Inc: 62.32  
deg Az: 269.78 deg TVD:  
7395.18 ft

S: 60 MD: 7601.00 ft Inc: 65.00  
deg Az: 274.45 deg TVD:  
7416.04 ft

S: 61 MD: 7649.00 ft Inc: 66.52  
deg Az: 276.69 deg TVD:  
7435.75 ft

S: 62 MD: 7696.00 ft Inc: 68.67  
deg Az: 278.08 deg TVD:

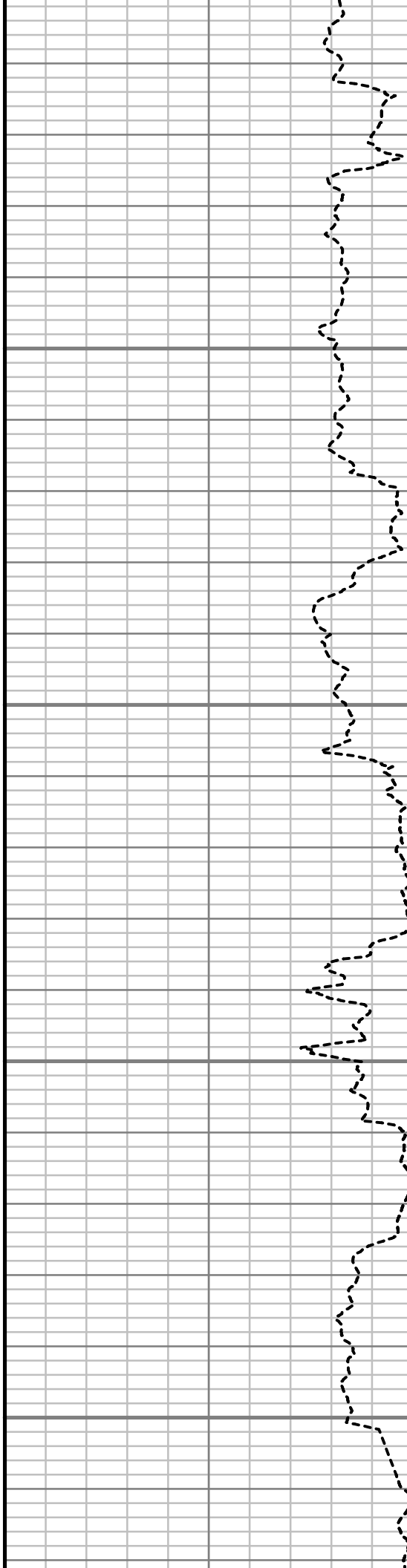


7750

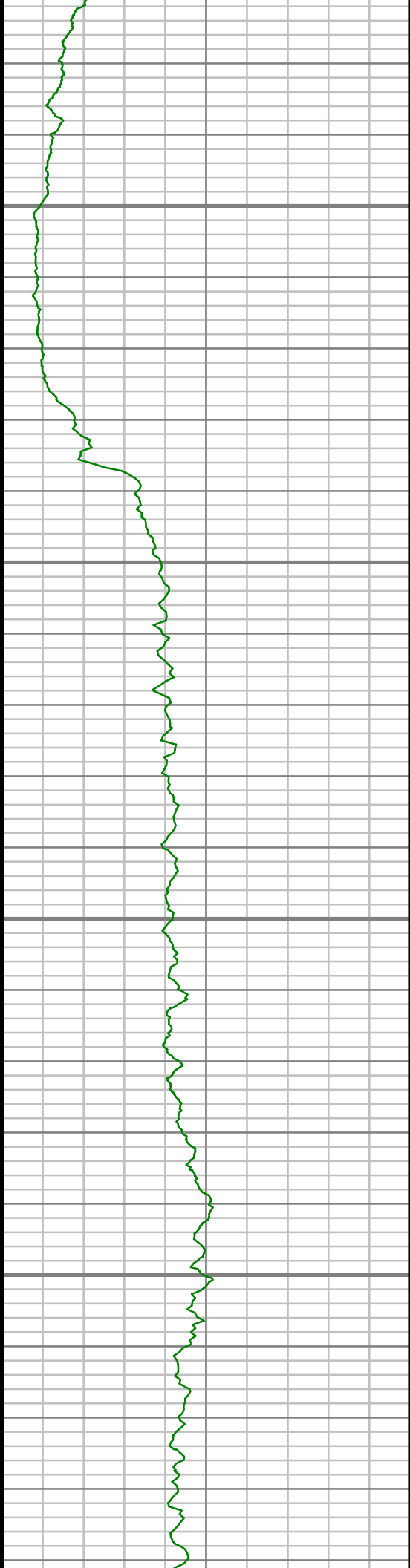
7800

7850

7900



7453.66 ft
S: 63 MD: 7744.00 ft Inc: 70.45 deg Az: 277.84 deg TVD: 7470.43 ft
S: 64 MD: 7791.00 ft Inc: 72.93 deg Az: 278.16 deg TVD: 7485.19 ft
S: 65 MD: 7840.00 ft Inc: 75.95 deg Az: 276.88 deg TVD: 7498.33 ft
S: 66 MD: 7887.00 ft Inc: 78.13 deg Az: 274.09 deg TVD: 7508.87 ft

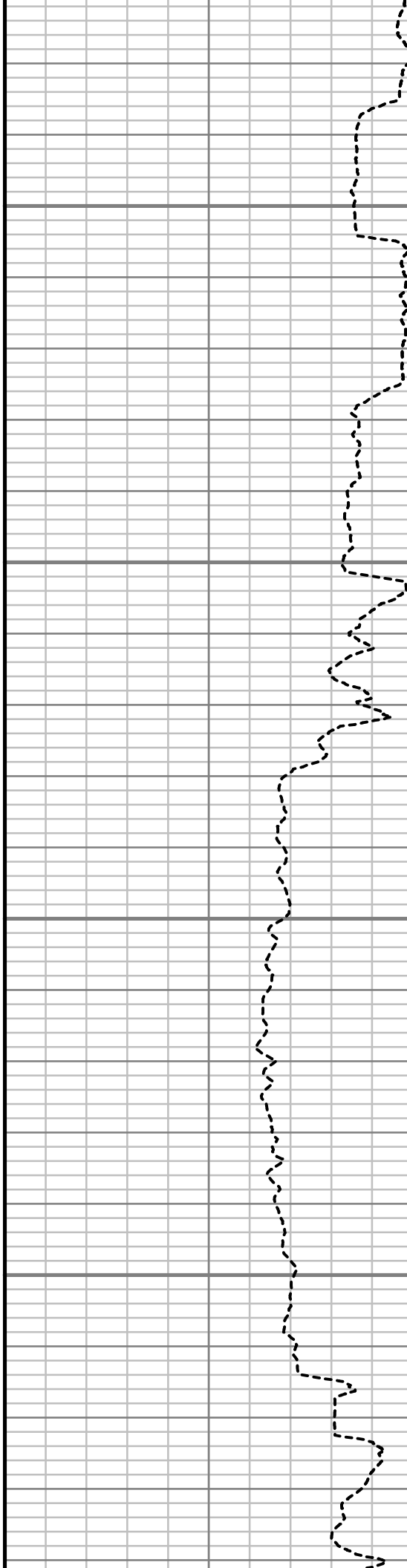


7950

8000

8050

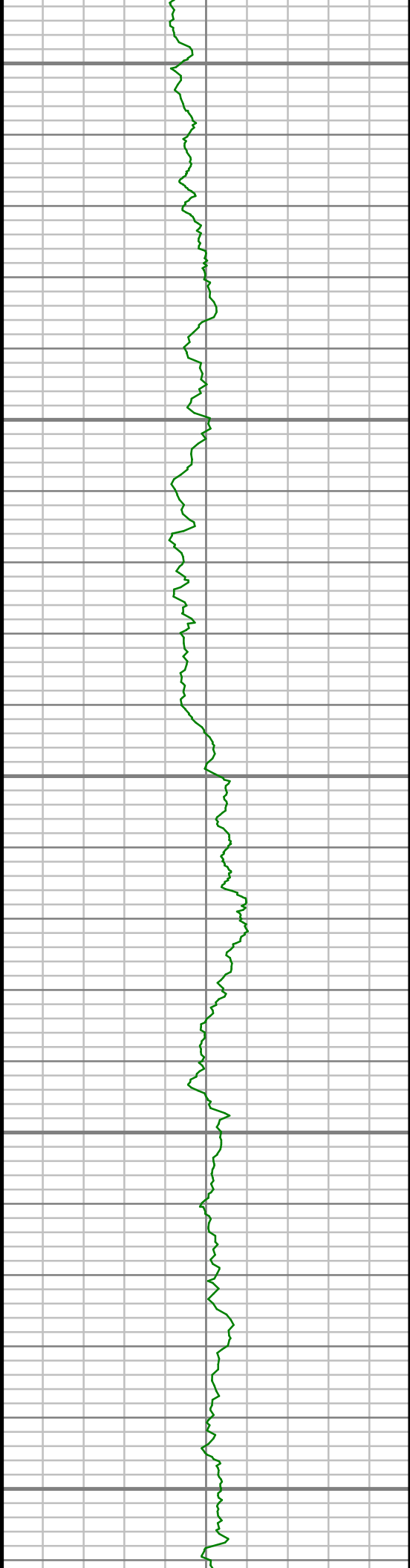
8100



S: 67 MD: 7935.00 ft Inc: 82.72  
deg Az: 273.03 deg TVD:  
7516.85 ft

S: 68 MD: 8050.00 ft Inc: 87.08  
deg Az: 271.20 deg TVD:  
7527.07 ft





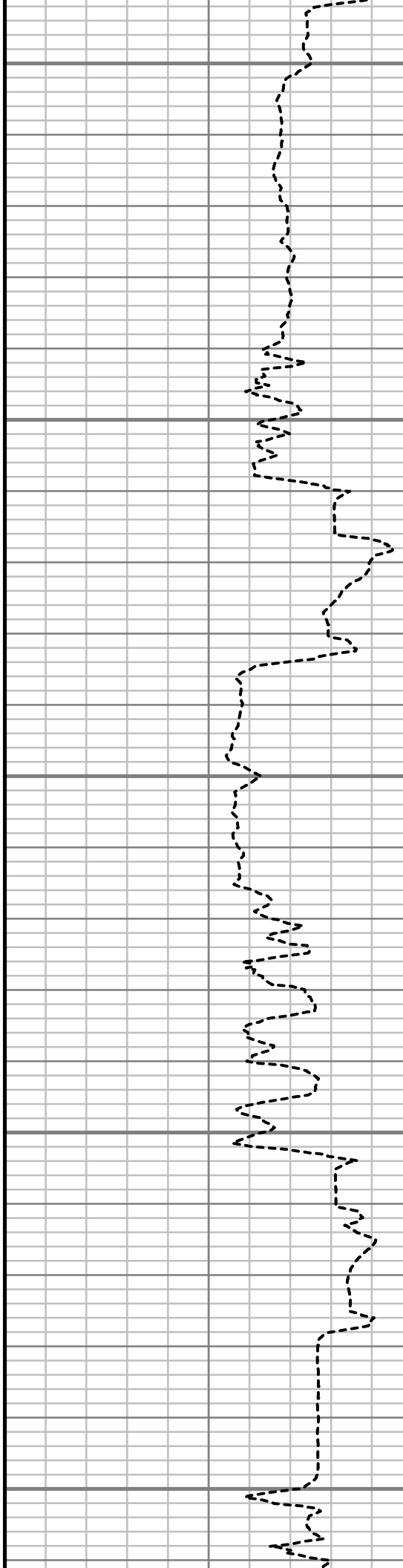
8150

8200

8250

8300

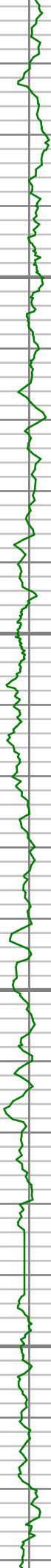
8350



S: 69 MD: 8145.00 ft Inc: 87.75  
deg Az: 271.68 deg TVD:  
7531.36 ft

S: 70 MD: 8241.00 ft Inc: 88.42  
deg Az: 271.30 deg TVD:  
7534.57 ft

S: 71 MD: 8336.00 ft Inc: 89.46  
deg Az: 271.71 deg TVD:  
7536.32 ft

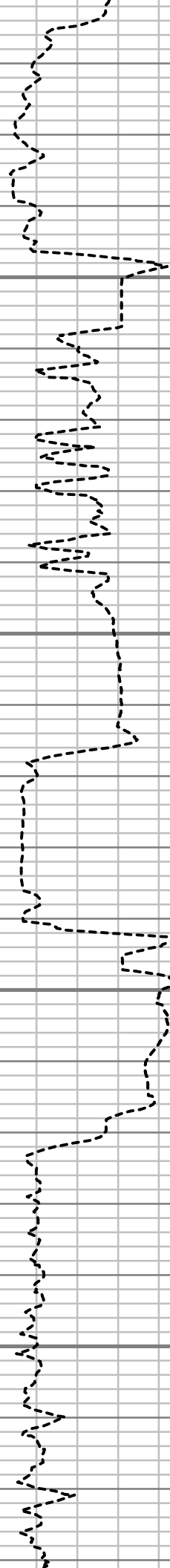


8400

8450

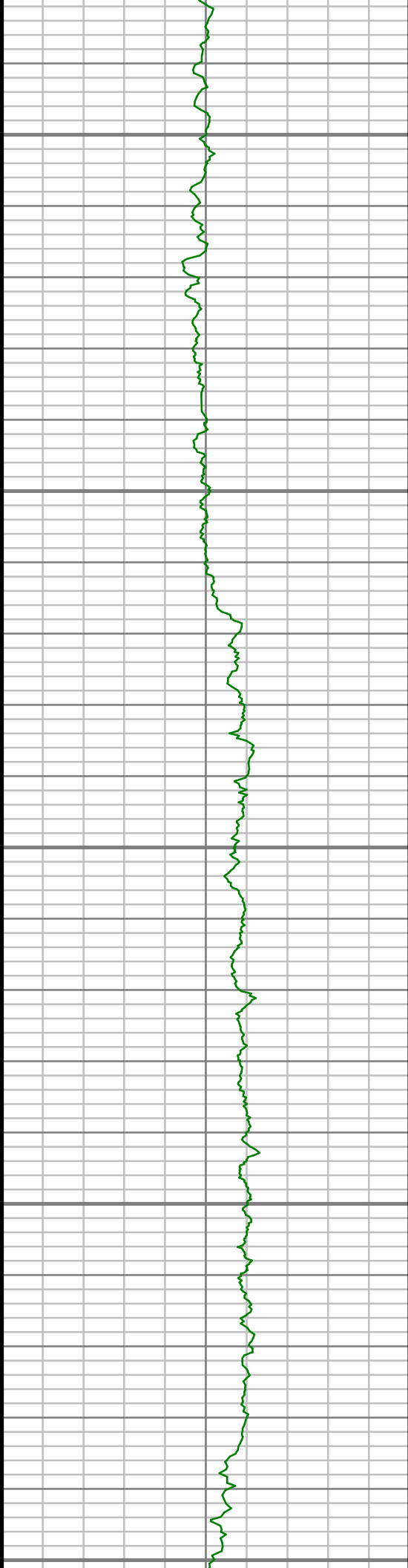
8500

8550



S: 72 MD: 8431.00 ft Inc: 88.42  
deg Az: 270.83 deg TVD:  
7538.08 ft

S: 73 MD: 8526.00 ft Inc: 90.10  
deg Az: 271.17 deg TVD:  
7539.30 ft



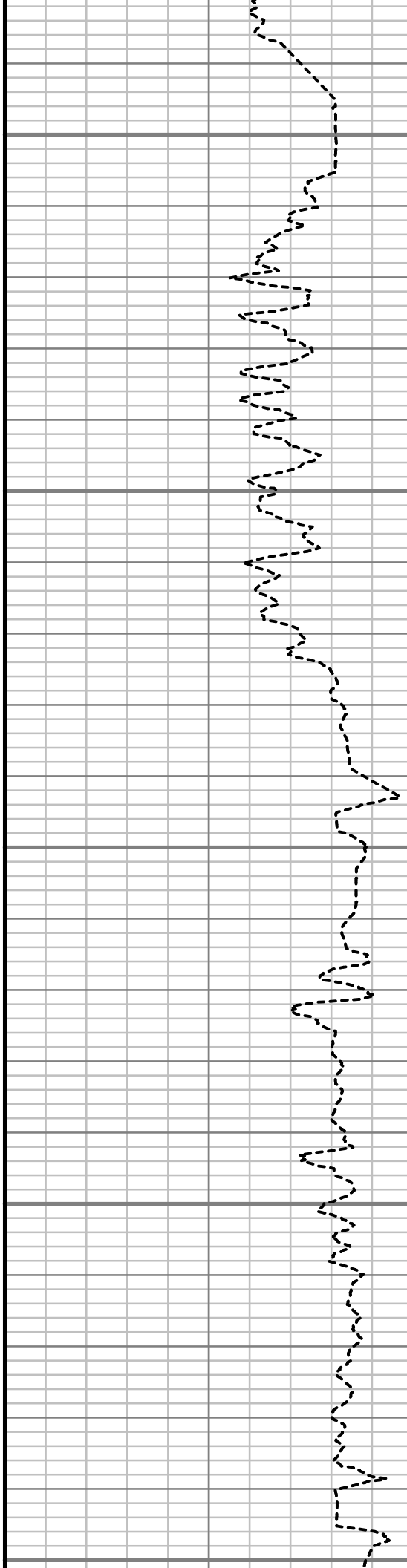
8600

8650

8700

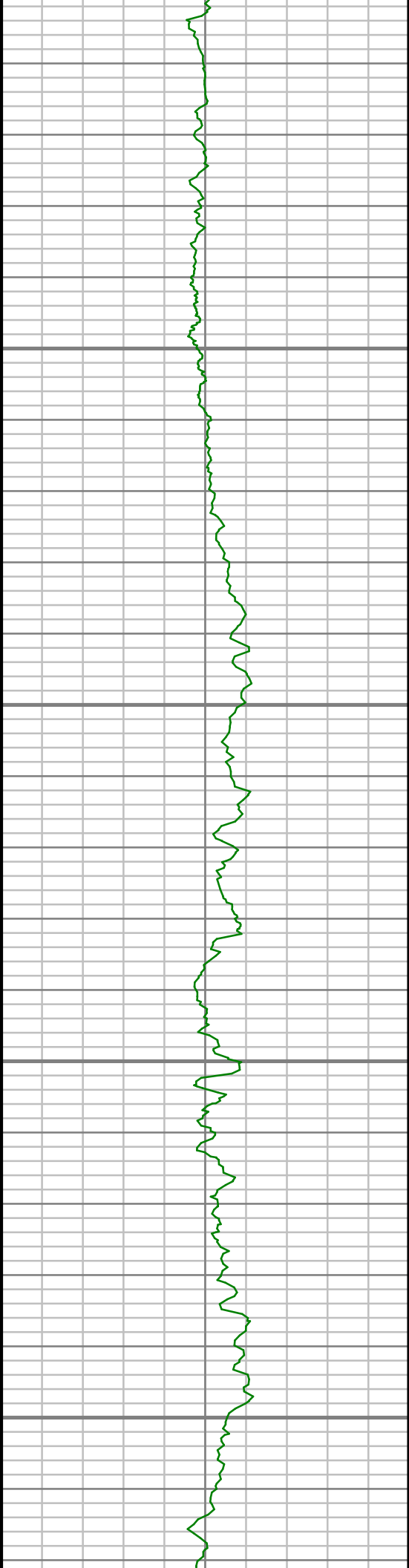
8750

8800



S: 74 MD: 8622.00 ft Inc: 89.19  
deg Az: 270.14 deg TVD:  
7539.89 ft

S: 75 MD: 8717.00 ft Inc: 90.27  
deg Az: 270.07 deg TVD:  
7540.34 ft

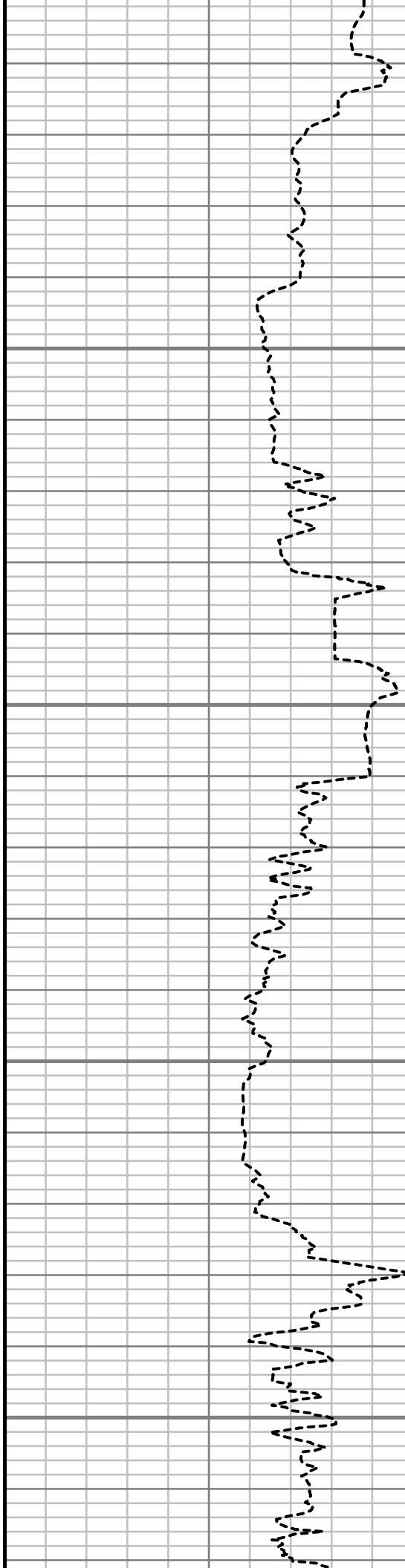


8850

8900

8950

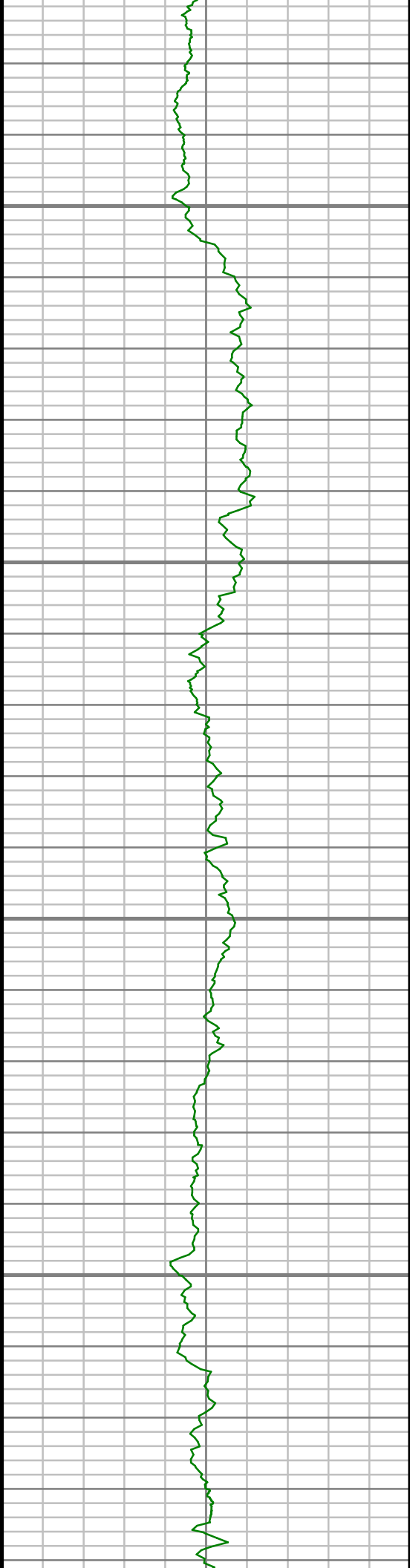
9000



S: 76 MD: 8812.00 ft Inc: 92.45  
deg Az: 270.89 deg TVD:  
7538.08 ft

S: 77 MD: 8908.00 ft Inc: 90.30  
deg Az: 270.53 deg TVD:  
7535.77 ft

S: 78 MD: 9003.00 ft Inc: 89.13  
deg Az: 269.48 deg TVD:  
7536.25 ft

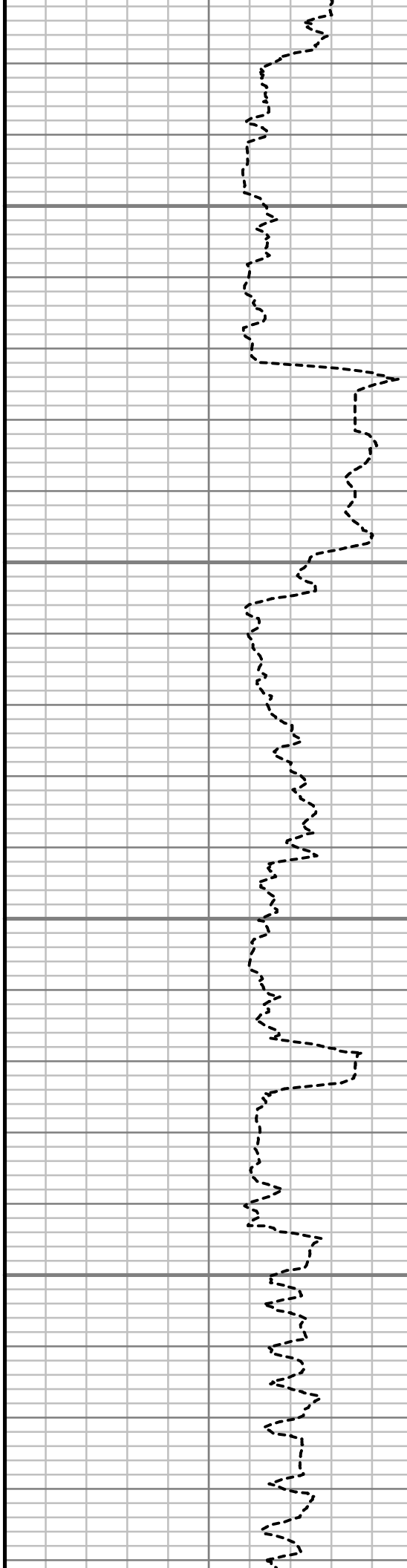


9050

9100

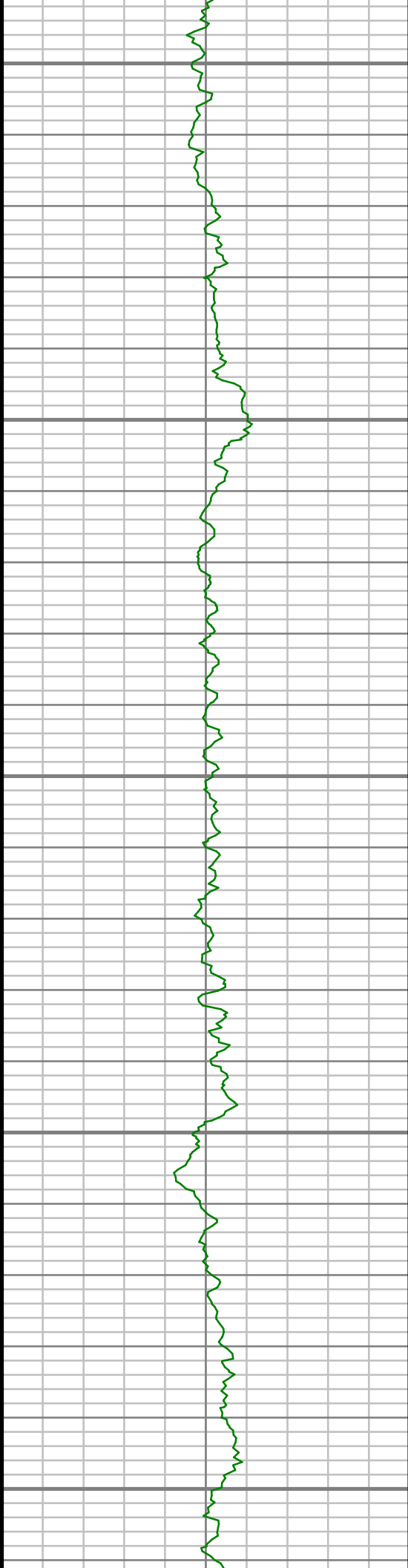
9150

9200



S: 79 MD: 9098.00 ft Inc: 90.20  
deg Az: 271.41 deg TVD:  
7536.81 ft

S: 80 MD: 9193.00 ft Inc: 89.40  
deg Az: 270.44 deg TVD:  
7537.14 ft



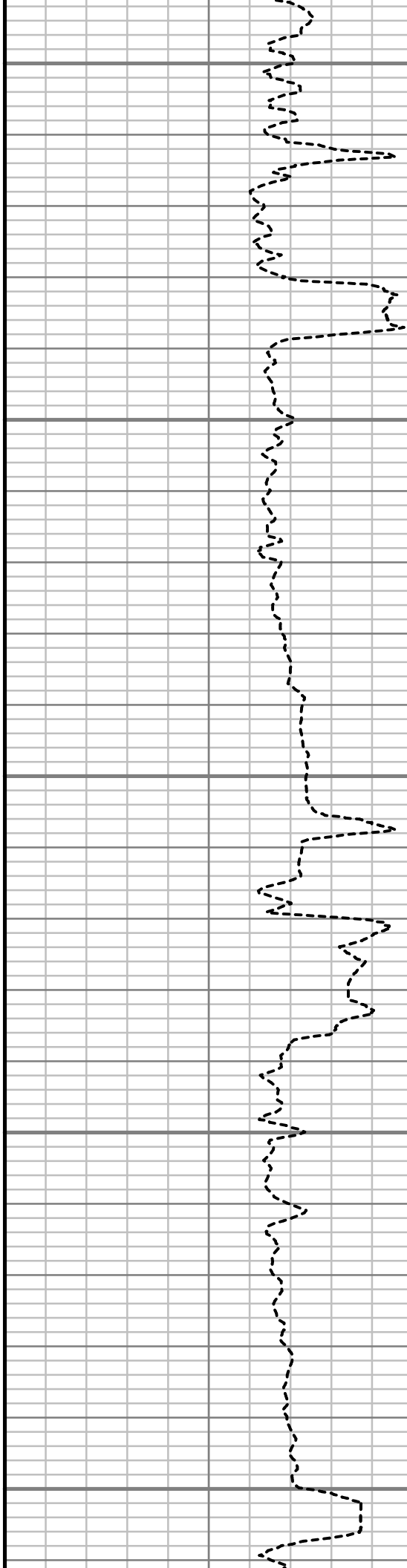
9250

9300

9350

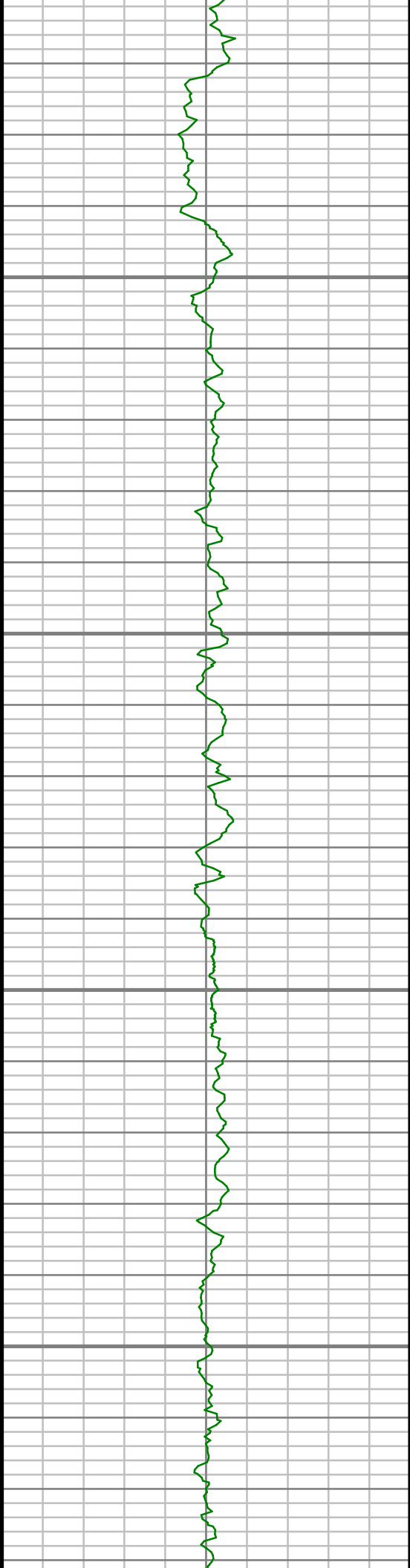
9400

9450



S: 81 MD: 9289.00 ft Inc: 89.29  
deg Az: 269.88 deg TVD:  
7538.24 ft

S: 82 MD: 9384.00 ft Inc: 90.57  
deg Az: 270.21 deg TVD:  
7538.35 ft

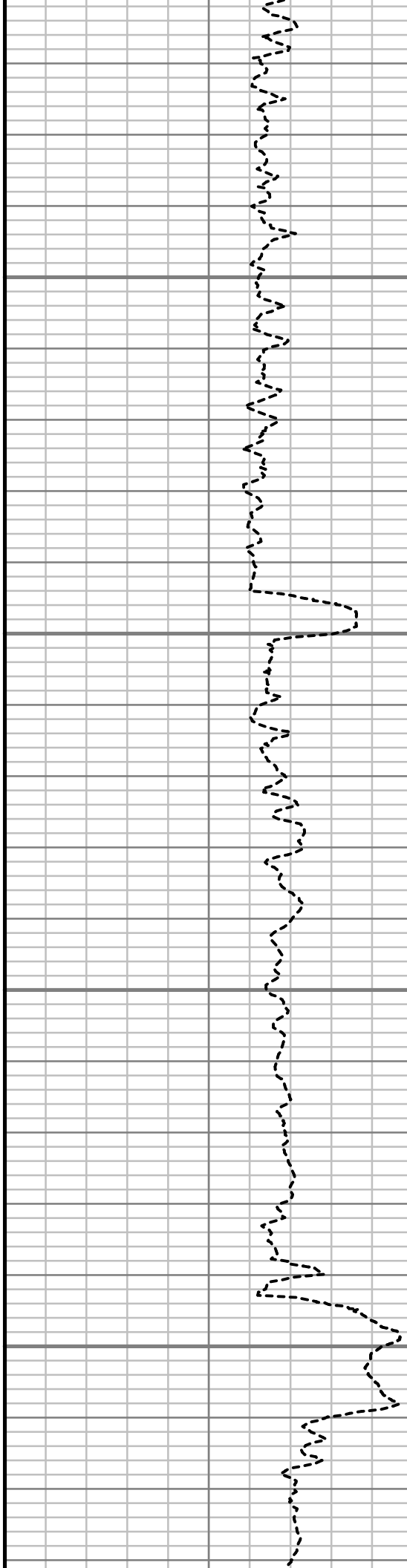


9500

9550

9600

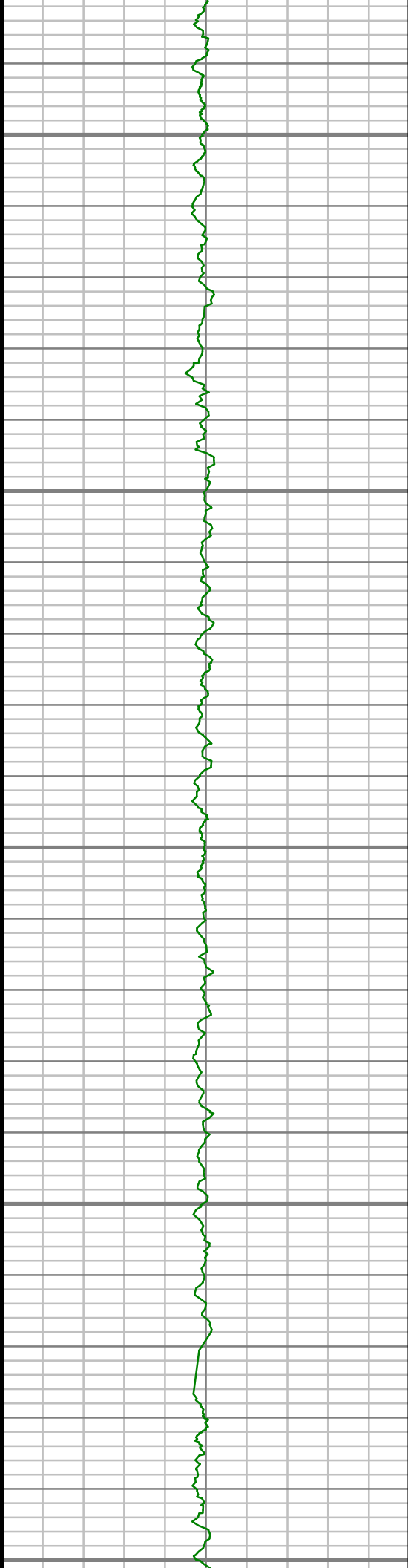
9650



S: 83 MD: 9479.00 ft Inc: 90.24  
deg Az: 269.67 deg TVD:  
7537.68 ft

S: 84 MD: 9575.00 ft Inc: 89.63  
deg Az: 268.78 deg TVD:  
7537.79 ft

S: 85 MD: 9670.00 ft Inc: 89.46  
deg Az: 269.00 deg TVD:  
7538.54 ft



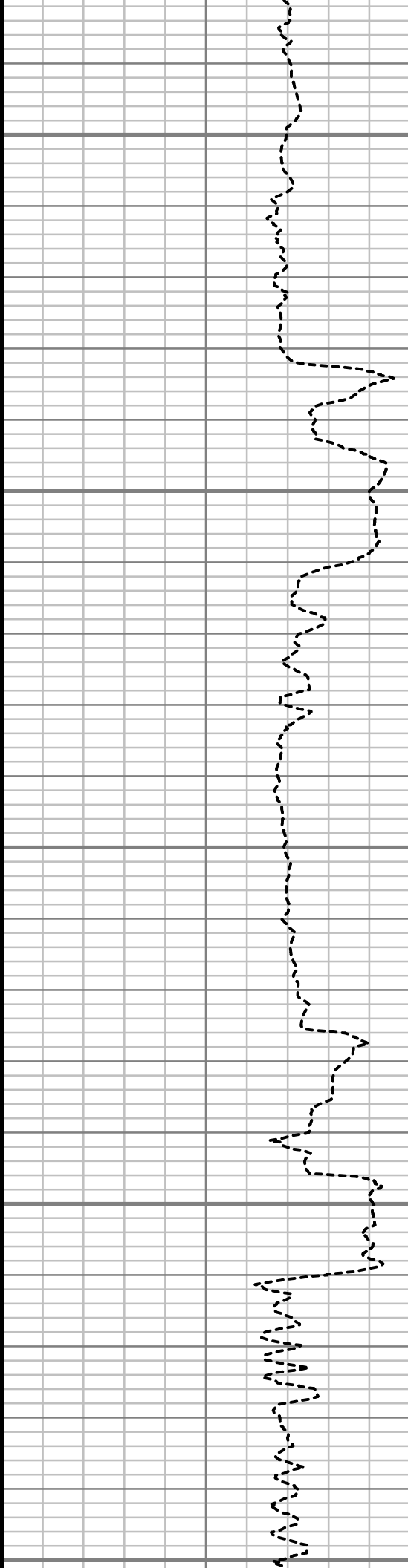
9700

9750

9800

9850

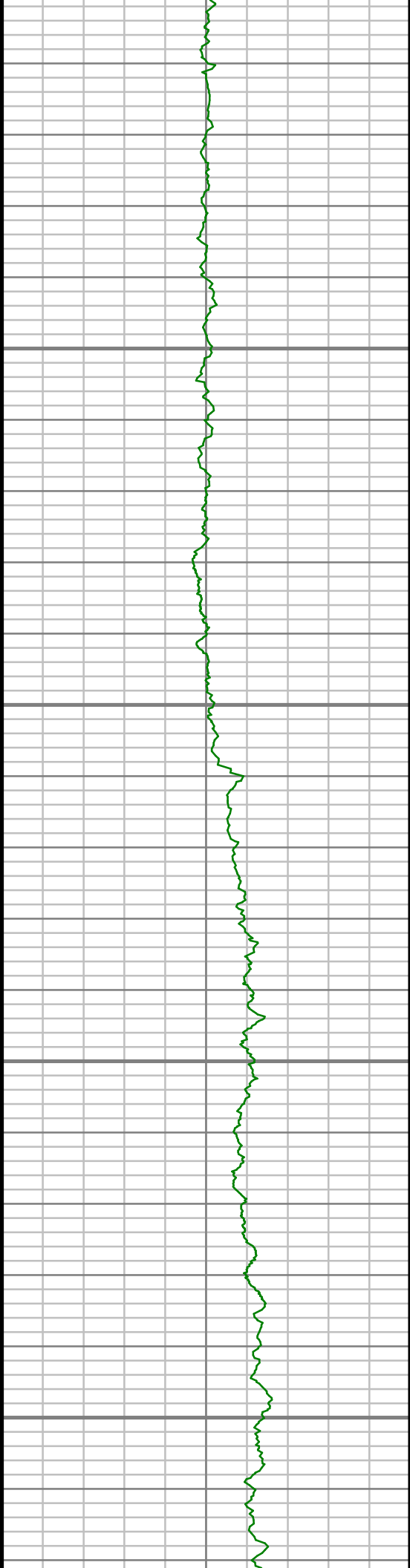
9900



S: 86 MD: 9765.00 ft Inc: 89.87  
deg Az: 269.26 deg TVD:  
7539.10 ft

S: 87 MD: 9860.00 ft Inc: 90.34  
deg Az: 269.02 deg TVD:  
7538.93 ft



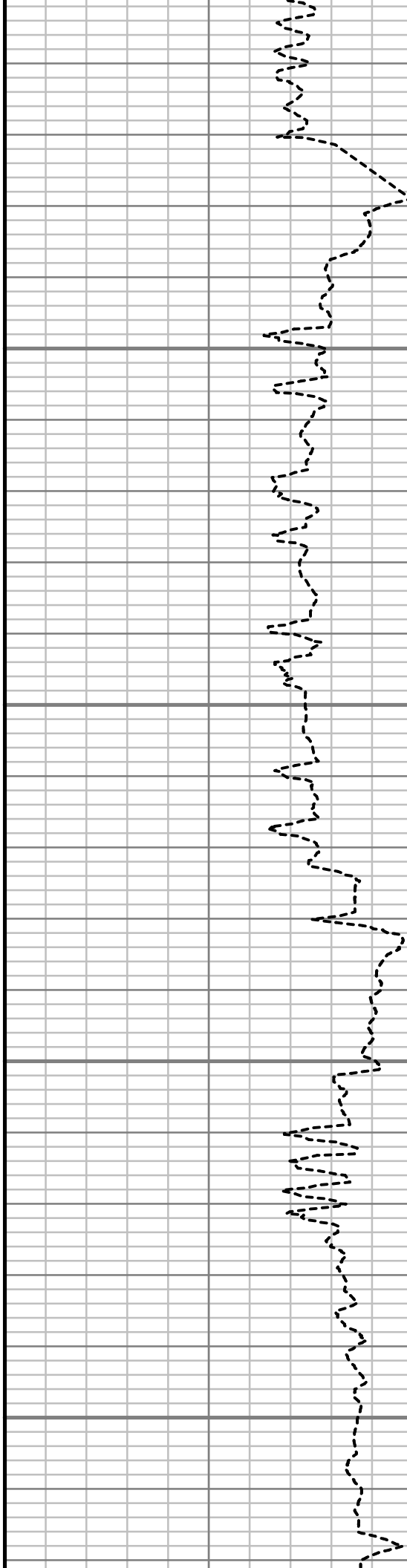


9950

10000

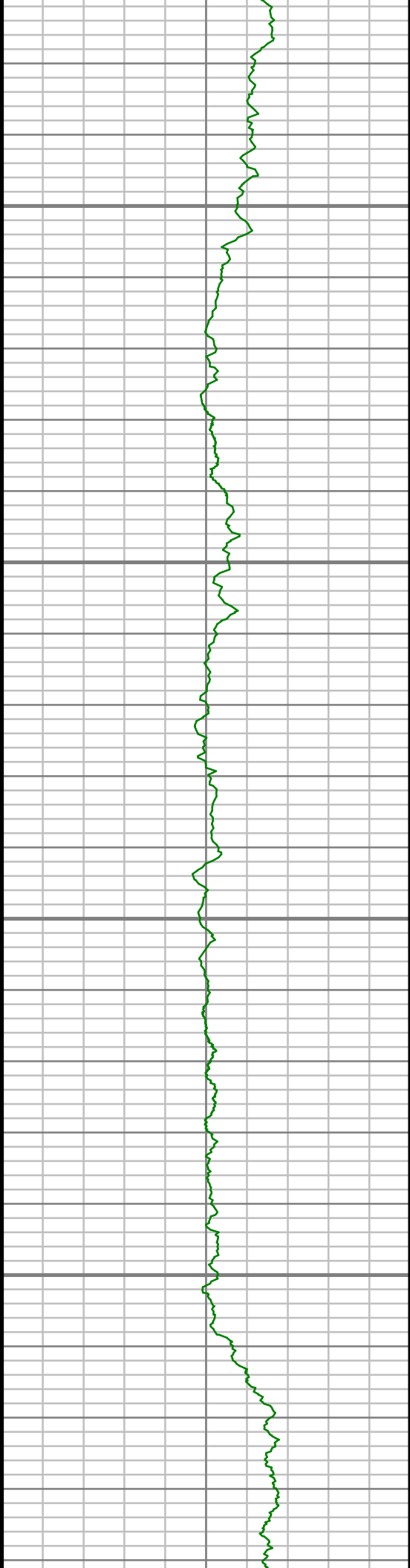
10050

10100



S: 88 MD: 9956.00 ft Inc: 89.40  
deg Az: 268.16 deg TVD:  
7539.16 ft

S: 89 MD: 10051.00 ft Inc:  
90.07 deg Az: 268.88 deg TVD:  
7539.60 ft

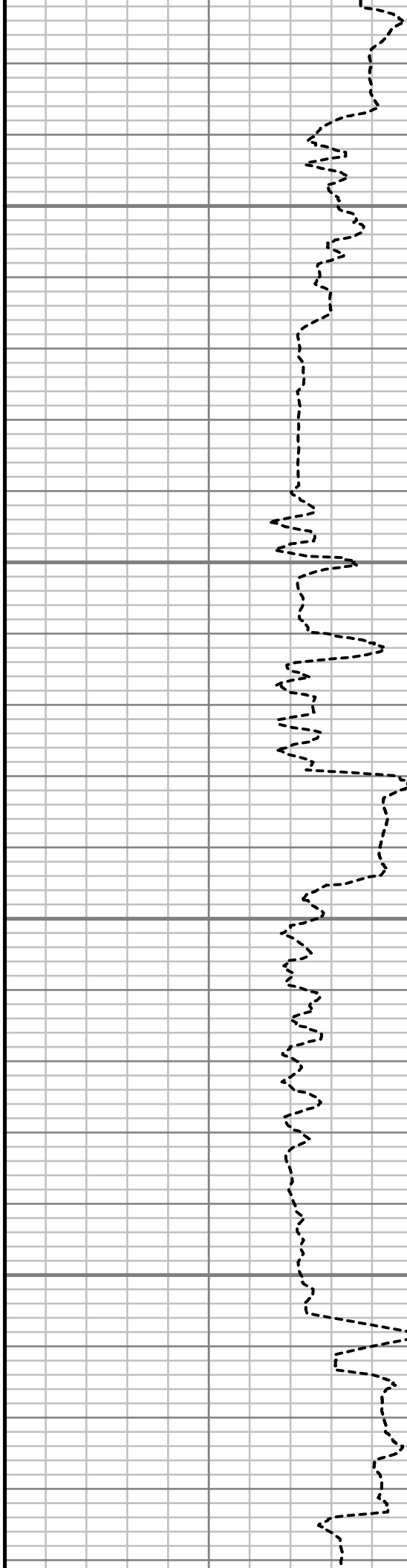


10150

10200

10250

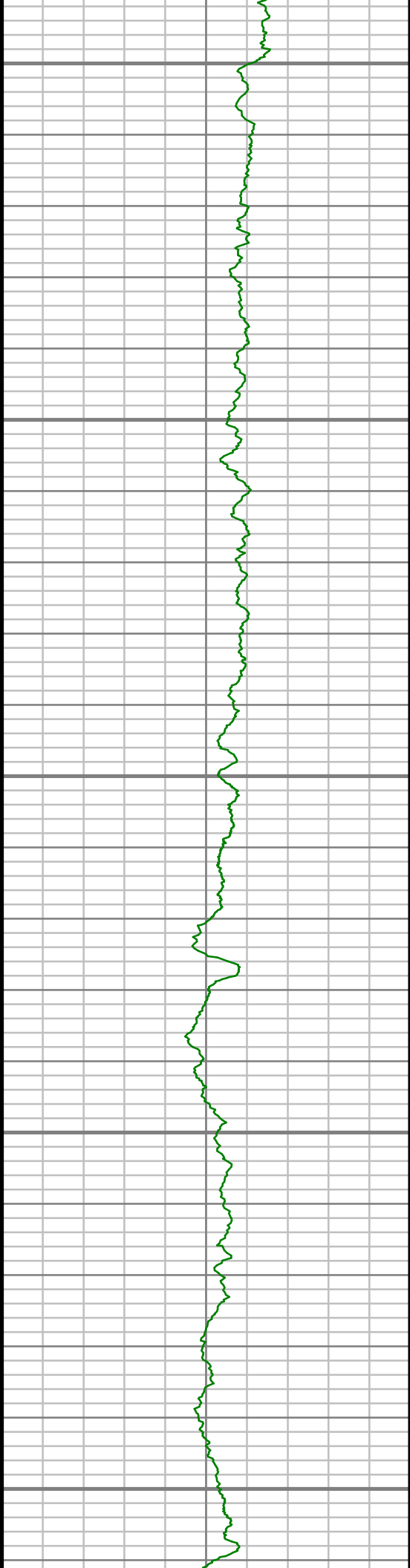
10300



S: 90 MD: 10146.00 ft Inc:  
90.37 deg Az: 270.04 deg TVD:  
7539.24 ft

S: 91 MD: 10241.00 ft Inc:  
90.50 deg Az: 270.32 deg TVD:  
7538.52 ft

S: 92 MD: 10337.00 ft Inc:  
88.82 deg Az: 271.85 deg TVD:



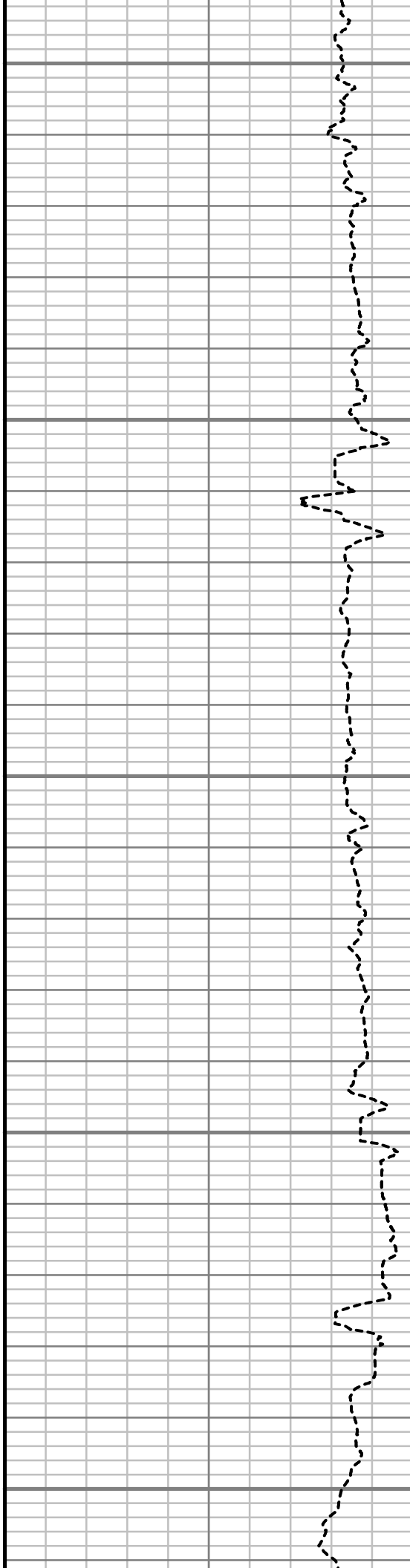
10350

10400

10450

10500

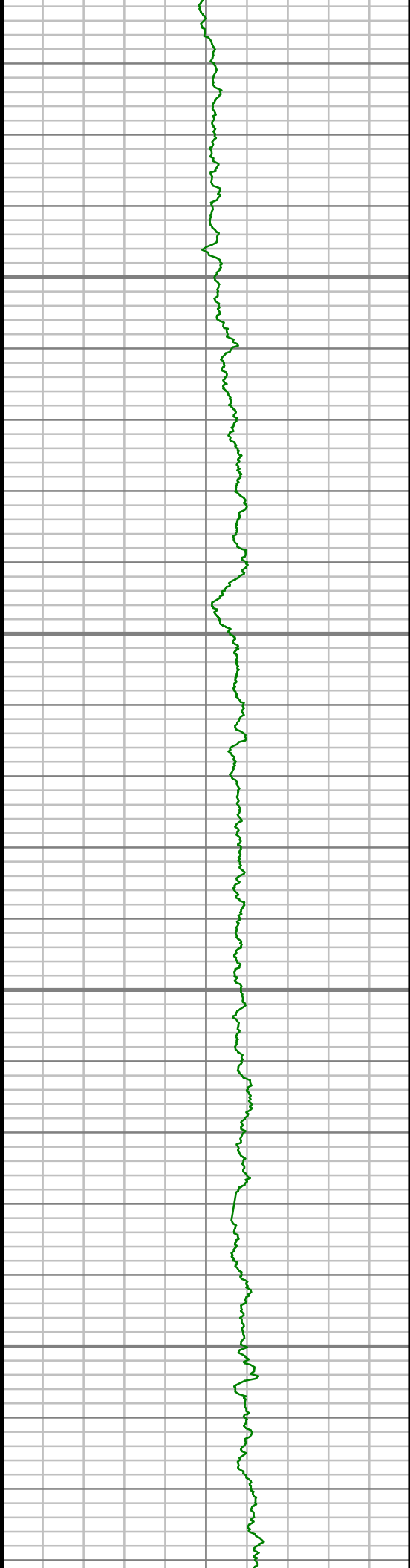
10550



S: 92 MD: 10372.00 ft Inc:  
88.12 deg Az: 271.55 deg TVD:  
7539.08 ft

S: 93 MD: 10432.00 ft Inc:  
88.05 deg Az: 271.17 deg TVD:  
7541.67 ft

S: 94 MD: 10527.00 ft Inc:  
89.23 deg Az: 271.23 deg TVD:  
7543.93 ft

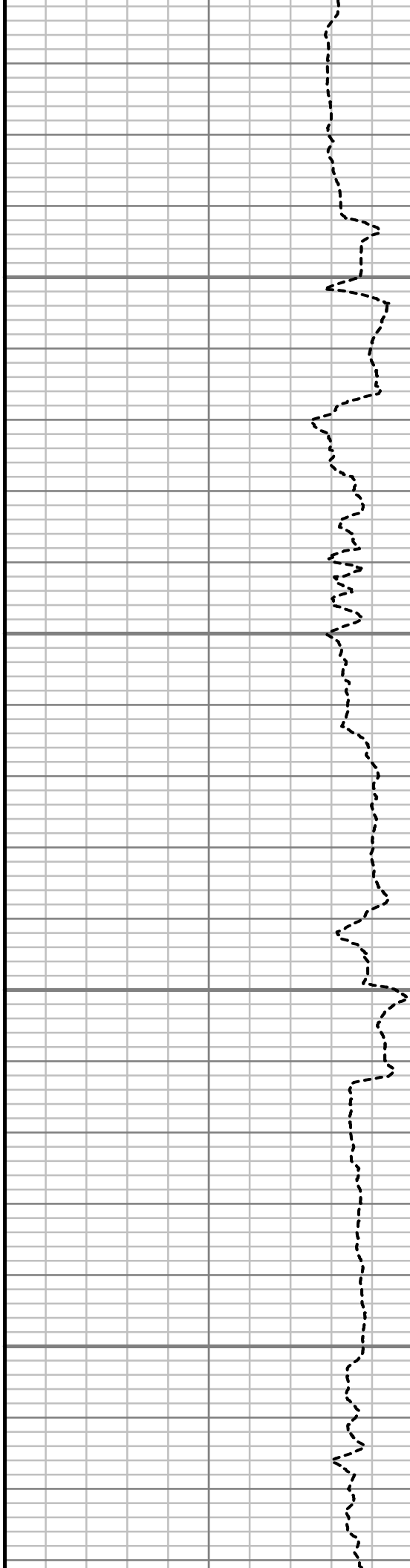


10600

10650

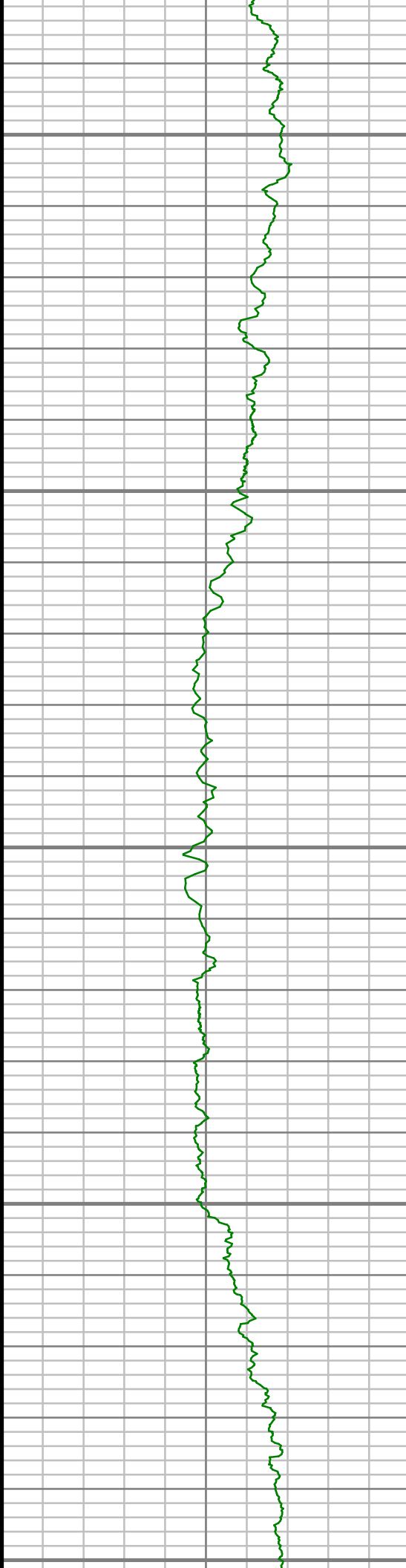
10700

10750



S: 95 MD: 10622.00 ft Inc:  
90.47 deg Az: 272.44 deg TVD:  
7544.18 ft

S: 96 MD: 10717.00 ft Inc:  
91.31 deg Az: 271.76 deg TVD:  
7542.70 ft



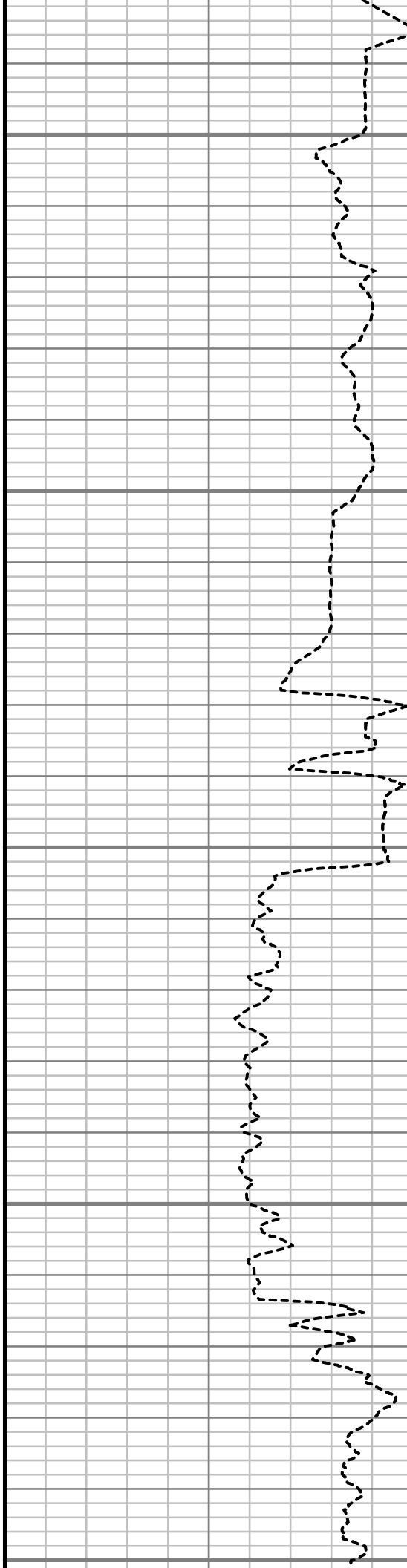
10800

10850

10900

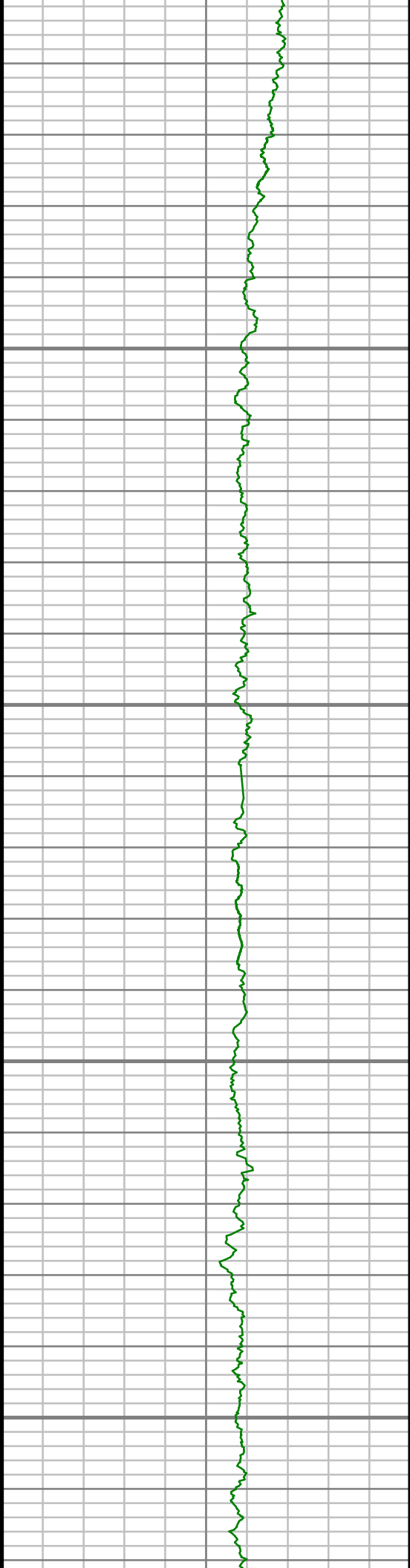
10950

11000



S: 97 MD: 10812.00 ft Inc:  
90.94 deg Az: 271.15 deg TVD:  
7540.84 ft

S: 98 MD: 10908.00 ft Inc:  
89.40 deg Az: 271.04 deg TVD:  
7540.56 ft

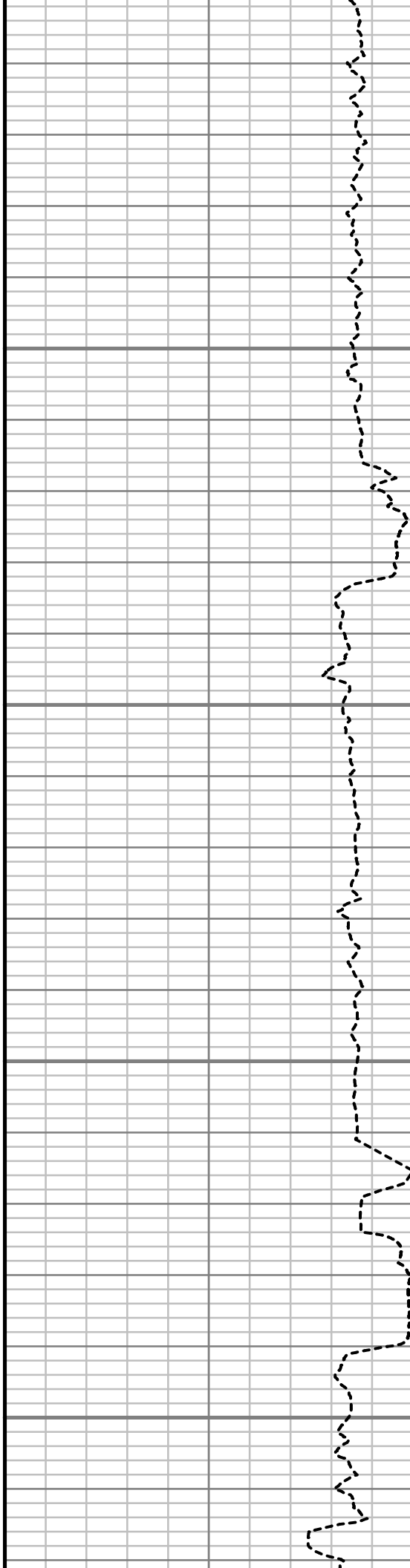


11050

11100

11150

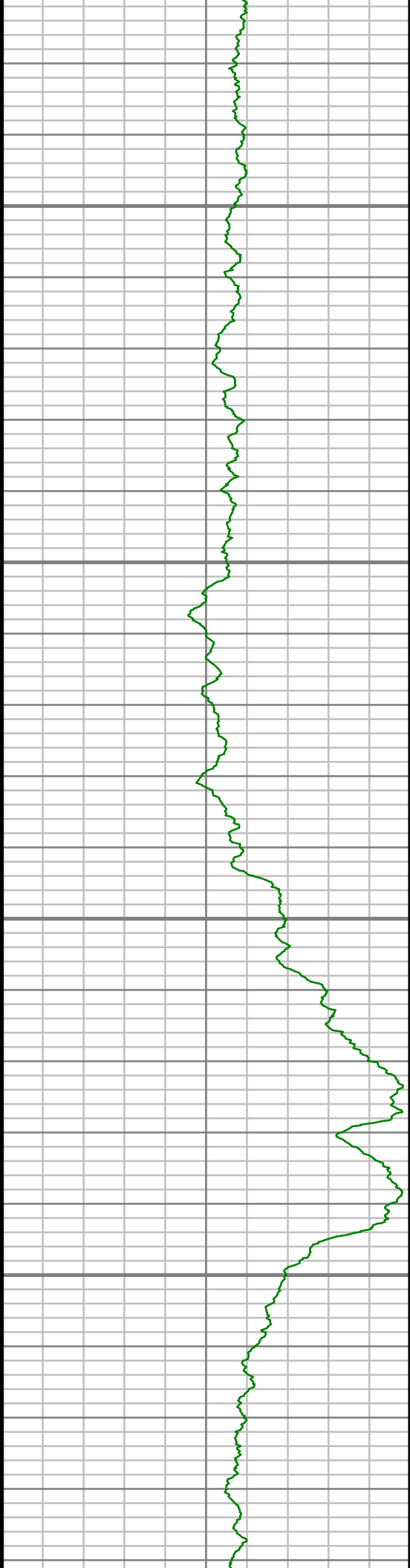
11200



S: 99 MD: 11003.00 ft Inc:  
88.56 deg Az: 270.41 deg TVD:  
7542.25 ft

S: 100 MD: 11098.00 ft Inc:  
89.03 deg Az: 270.55 deg TVD:  
7544.26 ft

S: 101 MD: 11193.00 ft Inc:  
89.66 deg Az: 269.31 deg TVD:  
7545.34 ft



11250

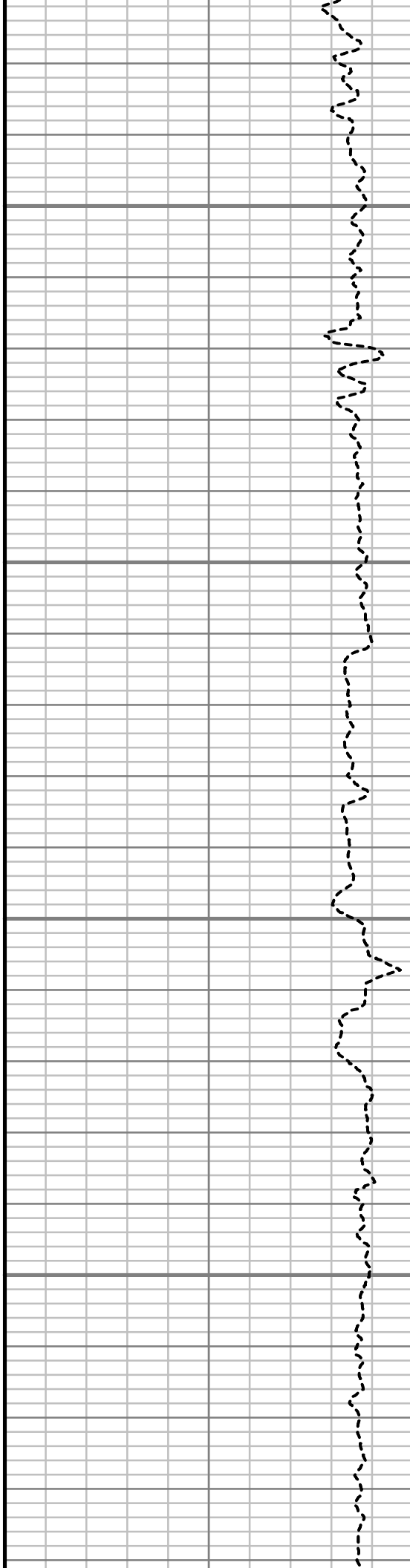
11300

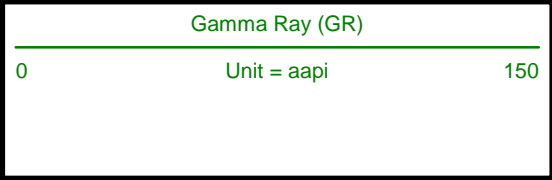
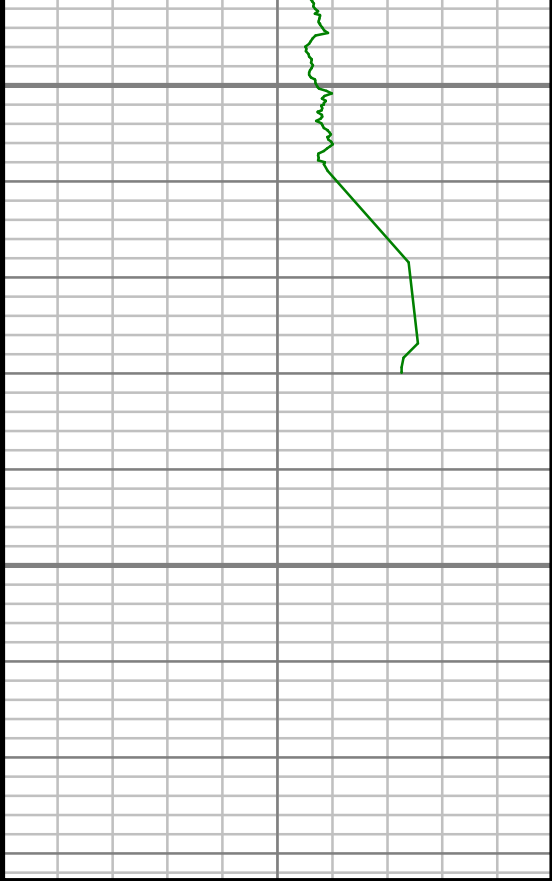
11350

11400

S: 102 MD: 11289.00 ft Inc:  
89.09 deg Az: 269.08 deg TVD:  
7546.38 ft

S: 103 MD: 11384.00 ft Inc:  
88.05 deg Az: 268.34 deg TVD:  
7548.75 ft

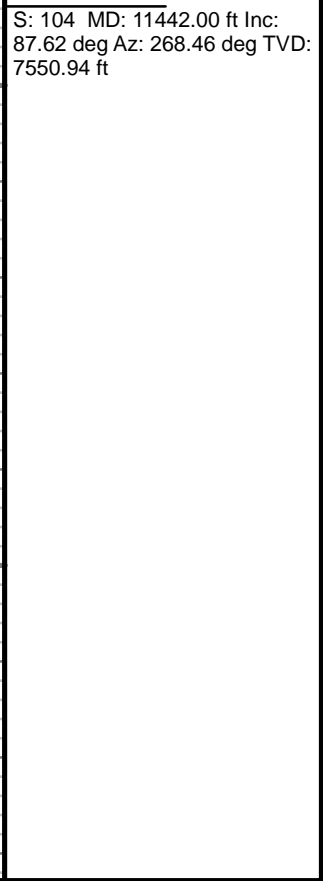
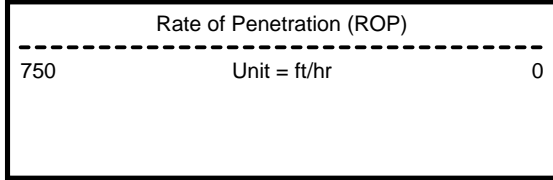
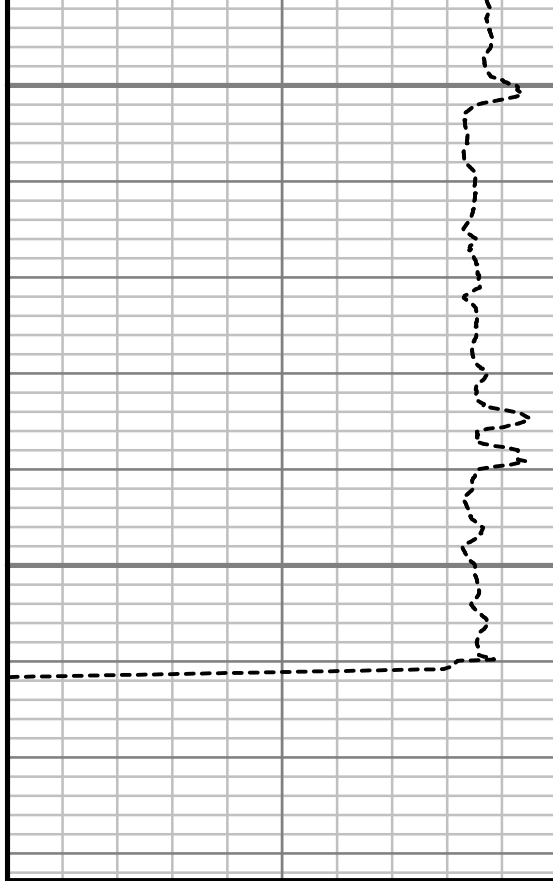




11450

11500

MEASURED DEPTH  
1-240 (ft)





## MWD Survey Report

<b>Well Location</b>	McCONAHAY
<b>Well Name</b>	McCONAHAY 1B-34H-H266
<b>Survey Date</b>	4/14/2014
<b>Latitude</b>	40°5'52.872"N
<b>Longitude</b>	104°45'27.828"W
<b>Btotal</b>	52590 nT
<b>Dip</b>	66.70 deg
<b>Magnetic Declination</b>	8.50 deg
<b>North Reference</b>	True North
<b>Grid Correction</b>	None
<b>Depth Reference</b>	RKB (13.00 ft)
<b>Calculation Method</b>	Minimum Curvature
<b>Section (VS) Ref</b>	0.00N (ft), 0.00E (ft), 256.00Azim (deg)
<b>Operator(s)</b>	ALI NEJAD, JEFFREY SMITH, MARK SMITH

### Well Notes

SURVEYS FROM 100 FT. - 1050 FT. WERE ACQUIRED BY VES MS GYRO.

SURVEYS FROM 1188 FT. - 11442 FT. WERE ACQUIRED BY SCIENTIFIC DRILLING INTERNATIONAL MWD.

MD	Inc	Azim	TVD	VS	+N/-S	+E/-W	Closure Direction	Closure Distance	DLS
ft	deg	deg	ft	ft	ft	ft	deg	ft	"/100ft
0.00	0.00	0.00	0.00	0.00	0.00	0.00	0.00	0.00	Invalid
100.00	0.36	163.36	100.00	-0.01	-0.30	0.09	163.36	0.31	0.36
200.00	0.29	148.77	200.00	-0.10	-0.82	0.31	159.18	0.88	0.11
300.00	0.39	125.88	300.00	-0.40	-1.23	0.72	149.81	1.43	0.17
400.00	1.18	79.78	399.99	-1.64	-1.25	2.01	121.93	2.37	0.95
500.00	2.41	82.30	499.94	-4.76	-0.79	5.10	98.76	5.16	1.23
600.00	3.57	67.53	599.80	-9.93	0.69	10.07	86.11	10.09	1.38
700.00	5.19	66.61	699.50	-17.47	3.67	17.09	77.88	17.48	1.62
800.00	6.82	73.32	798.95	-27.87	7.17	26.93	75.09	27.87	1.77
900.00	7.40	79.54	898.19	-40.23	10.04	38.95	75.54	40.23	0.96
1000.00	8.26	77.48	997.25	-53.84	12.77	52.30	76.28	53.84	0.90
1050.00	8.25	77.09	1046.73	-61.01	14.35	59.30	76.40	61.01	0.11
1188.00	6.46	81.40	1183.59	-78.64	17.72	76.63	76.98	78.65	1.36
1373.00	6.02	76.11	1367.50	-98.70	21.61	96.33	77.36	98.72	0.39
1559.00	5.64	69.35	1552.54	-117.53	27.17	114.35	76.63	117.53	0.42
1745.00	5.68	74.50	1737.63	-135.82	32.86	131.78	76.00	135.82	0.27
1931.00	6.05	84.56	1922.66	-154.71	36.25	150.41	76.45	154.72	0.59
2122.00	5.95	76.90	2112.62	-174.56	39.45	170.07	76.94	174.59	0.42
2312.00	5.50	66.76	2301.68	-193.40	45.28	188.04	76.46	193.41	0.58

MD	Inc	Azim	TVD	VS	+N/-S	+E/-W	Closure Direction	Closure Distance	DLS
ft	deg	deg	ft	ft	ft	ft	deg	ft	°/100ft
2503.00	4.50	57.38	2491.95	-209.54	52.93	202.76	75.37	209.55	0.67
2694.00	5.23	59.62	2682.26	-225.00	61.37	216.58	74.18	225.11	0.40
2884.00	7.64	74.01	2871.06	-245.93	69.23	236.20	73.66	246.14	1.51
3075.00	6.95	80.28	3060.52	-270.15	74.68	259.80	73.96	270.32	0.55
3265.00	6.84	86.86	3249.15	-292.73	77.24	282.43	74.70	292.80	0.42
3456.00	5.32	77.07	3439.07	-312.75	79.85	302.42	75.21	312.78	0.96
3646.00	4.71	62.37	3628.35	-329.14	85.44	317.91	74.96	329.19	0.74
3837.00	5.50	77.91	3818.60	-345.92	91.00	333.82	74.75	346.00	0.83
4027.00	5.00	72.59	4007.80	-363.29	95.38	350.63	74.78	363.37	0.37
4218.00	4.72	79.00	4198.12	-379.44	99.37	366.28	74.82	379.52	0.32
4409.00	6.67	74.35	4388.17	-398.37	103.86	384.67	74.89	398.45	1.05
4599.00	5.73	65.37	4577.06	-418.72	110.79	403.92	74.66	418.84	0.71
4790.00	6.07	45.57	4767.07	-436.81	121.84	419.81	73.82	437.13	1.07
4981.00	8.96	60.42	4956.42	-459.85	136.25	439.96	72.79	460.58	1.81
5171.00	8.95	75.07	5144.13	-488.88	147.37	467.11	72.49	489.80	1.20
5362.00	8.57	82.35	5332.91	-517.88	153.09	495.56	72.83	518.67	0.61
5552.00	5.73	76.63	5521.42	-541.43	157.16	518.82	73.15	542.11	1.54
5743.00	5.78	74.31	5711.45	-560.58	161.97	537.36	73.23	561.24	0.13

MD	Inc	Azim	TVD	VS	+N/-S	+E/-W	Closure Direction	Closure Distance	DLS
ft	deg	deg	ft	ft	ft	ft	deg	ft	°/100ft
5934.00	3.67	75.30	5901.79	-576.32	166.12	552.54	73.27	576.97	1.11
6125.00	4.33	66.58	6092.33	-589.53	170.54	565.06	73.21	590.23	0.47
6315.00	6.29	74.65	6281.51	-607.00	176.14	581.67	73.15	607.75	1.10
6506.00	4.31	100.81	6471.71	-623.98	177.56	598.81	73.48	624.58	1.61
6696.00	2.66	75.32	6661.36	-634.88	177.34	610.10	73.79	635.35	1.17
6743.00	2.73	76.66	6708.31	-637.09	177.88	612.24	73.80	637.56	0.19
6791.00	0.46	282.10	6756.29	-638.06	178.18	613.17	73.80	638.53	6.55
6838.00	5.63	250.83	6803.21	-635.59	177.46	610.80	73.80	636.06	11.16
6887.00	10.40	249.04	6851.72	-628.80	175.09	604.40	73.84	629.25	9.74
6934.00	14.11	251.91	6897.64	-618.87	171.79	594.98	73.89	619.29	8.00
6982.00	16.44	251.02	6943.94	-606.26	167.76	583.00	73.95	606.65	4.88
7029.00	18.20	254.58	6988.81	-592.30	163.65	569.63	73.97	592.67	4.37
7077.00	21.61	256.78	7033.94	-575.96	159.63	553.79	73.92	576.34	7.26
7124.00	24.36	256.09	7077.20	-557.61	155.32	535.95	73.84	558.01	5.89
7172.00	28.27	259.06	7120.22	-536.35	150.78	515.18	73.69	536.79	8.59
7219.00	29.93	263.63	7161.29	-513.61	147.37	492.59	73.34	514.16	5.90
7268.00	33.03	266.78	7203.08	-488.37	145.26	467.10	72.73	489.17	7.17
7315.00	36.15	268.51	7241.77	-462.24	144.18	440.45	71.87	463.45	6.95

MD	Inc	Azim	TVD	VS	+N/-S	+E/-W	Closure Direction	Closure Distance	DLS
ft	deg	deg	ft	ft	ft	ft	deg	ft	°/100ft
7363.00	40.90	267.41	7279.31	-433.00	143.10	410.58	70.78	434.80	10.01
7410.00	46.24	263.21	7313.35	-401.05	140.40	378.32	69.64	403.53	12.93
7459.00	53.01	264.17	7345.07	-364.08	136.31	341.24	68.23	367.46	13.88
7506.00	58.55	266.02	7371.50	-325.73	133.01	302.53	66.27	330.48	12.23
7554.00	62.32	269.78	7395.18	-284.90	131.51	260.83	63.24	292.11	10.40
7601.00	65.00	274.45	7416.04	-244.46	133.08	218.76	58.69	256.06	10.57
7649.00	66.52	276.69	7435.75	-203.22	137.33	175.20	51.91	222.61	5.31
7696.00	68.67	278.08	7453.66	-162.77	142.92	132.11	42.75	194.63	5.32
7744.00	70.45	277.84	7470.43	-121.05	149.15	87.57	30.42	172.96	3.74
7791.00	72.93	278.16	7485.19	-79.69	155.36	43.39	15.60	161.31	5.33
7840.00	75.95	276.88	7498.33	-35.78	161.54	-3.40	358.79	161.57	6.66
7887.00	78.13	274.09	7508.87	7.40	165.91	-48.99	343.55	172.99	7.41
7935.00	82.72	273.03	7516.85	52.51	168.85	-96.22	330.32	194.34	9.82
8050.00	87.08	271.20	7527.07	162.52	173.07	-210.65	309.41	272.63	4.10
8145.00	87.75	271.68	7531.36	254.00	175.46	-305.52	299.87	352.32	0.87
8241.00	88.42	271.30	7534.57	346.46	177.96	-401.44	293.91	439.11	0.80
8336.00	89.46	271.71	7536.32	437.98	180.46	-496.39	289.98	528.17	1.18
8431.00	88.42	270.83	7538.08	529.61	182.57	-591.34	287.16	618.89	1.44

MD	Inc	Azim	TVD	VS	+N/-S	+E/-W	Closure Direction	Closure Distance	DLS
ft	deg	deg	ft	ft	ft	ft	deg	ft	°/100ft
8526.00	90.10	271.17	7539.30	621.36	184.23	-686.32	285.03	710.61	1.80
8622.00	89.19	270.14	7539.89	714.24	185.33	-782.31	283.33	803.96	1.43
8717.00	90.27	270.07	7540.34	806.37	185.50	-877.31	281.94	896.70	1.13
8812.00	92.45	270.89	7538.08	898.32	186.29	-972.27	280.85	989.95	2.46
8908.00	90.30	270.53	7535.77	991.14	187.48	-1068.23	279.95	1084.56	2.27
9003.00	89.13	269.48	7536.25	1083.31	187.49	-1163.22	279.16	1178.24	1.66
9098.00	90.20	271.41	7536.81	1175.30	188.23	-1258.21	278.51	1272.21	2.33
9193.00	89.40	270.44	7537.14	1267.09	189.76	-1353.20	277.98	1366.44	1.33
9289.00	89.29	269.88	7538.24	1360.17	190.03	-1449.19	277.47	1461.60	0.60
9384.00	90.57	270.21	7538.35	1452.33	190.11	-1544.19	277.02	1555.85	1.39
9479.00	90.24	269.67	7537.68	1544.53	190.01	-1639.19	276.61	1650.16	0.67
9575.00	89.63	268.78	7537.79	1637.98	188.71	-1735.18	276.21	1745.41	1.12
9670.00	89.46	269.00	7538.54	1730.58	186.87	-1830.15	275.83	1839.67	0.29
9765.00	89.87	269.26	7539.10	1823.10	185.42	-1925.14	275.50	1934.05	0.50
9860.00	90.34	269.02	7538.93	1915.61	183.99	-2020.13	275.20	2028.49	0.55
9956.00	89.40	268.16	7539.16	2009.30	181.62	-2116.10	274.91	2123.88	1.33
10051.00	90.07	268.88	7539.60	2102.04	179.16	-2211.07	274.63	2218.31	1.04
10146.00	90.37	270.04	7539.24	2194.43	178.26	-2306.06	274.42	2312.94	1.26

MD	Inc	Azim	TVD	VS	+N/-S	+E/-W	Closure Direction	Closure Distance	DLS
ft	deg	deg	ft	ft	ft	ft	deg	ft	"/100ft
10241.00	90.50	270.32	7538.52	2286.54	178.56	-2401.06	274.25	2407.69	0.33
10337.00	88.82	271.85	7539.08	2379.22	180.38	-2497.03	274.13	2503.54	2.37
10432.00	88.05	271.17	7541.67	2470.73	182.88	-2591.96	274.04	2598.40	1.09
10527.00	89.23	271.23	7543.93	2562.37	184.87	-2686.91	273.94	2693.26	1.24
10622.00	90.47	272.44	7544.18	2653.76	187.92	-2781.86	273.86	2788.20	1.82
10717.00	91.31	271.76	7542.70	2745.03	191.40	-2876.78	273.81	2883.14	1.14
10812.00	90.94	271.15	7540.84	2836.57	193.81	-2971.73	273.73	2978.05	0.75
10908.00	89.40	271.04	7540.56	2929.26	195.65	-3067.71	273.65	3073.94	1.61
11003.00	88.56	270.41	7542.25	3021.12	196.85	-3162.69	273.56	3168.81	1.11
11098.00	89.03	270.55	7544.26	3113.08	197.64	-3257.66	273.47	3263.65	0.52
11193.00	89.66	269.31	7545.34	3205.28	197.52	-3352.65	273.37	3358.47	1.47
11289.00	89.09	269.08	7546.38	3298.74	196.17	-3448.64	273.26	3454.21	0.64
11384.00	88.05	268.34	7548.75	3391.38	194.04	-3543.58	273.13	3548.89	1.35
11442.00	87.62	268.46	7550.94	3447.99	192.42	-3601.52	273.06	3606.66	0.78

MD	Inc	Azim	TVD	VS	+N/-S	+E/-W	Closure Direction	Closure Distance	DLS
ft	deg	deg	ft	ft	ft	ft	deg	ft	°/100ft

5" = 100' FEET MD