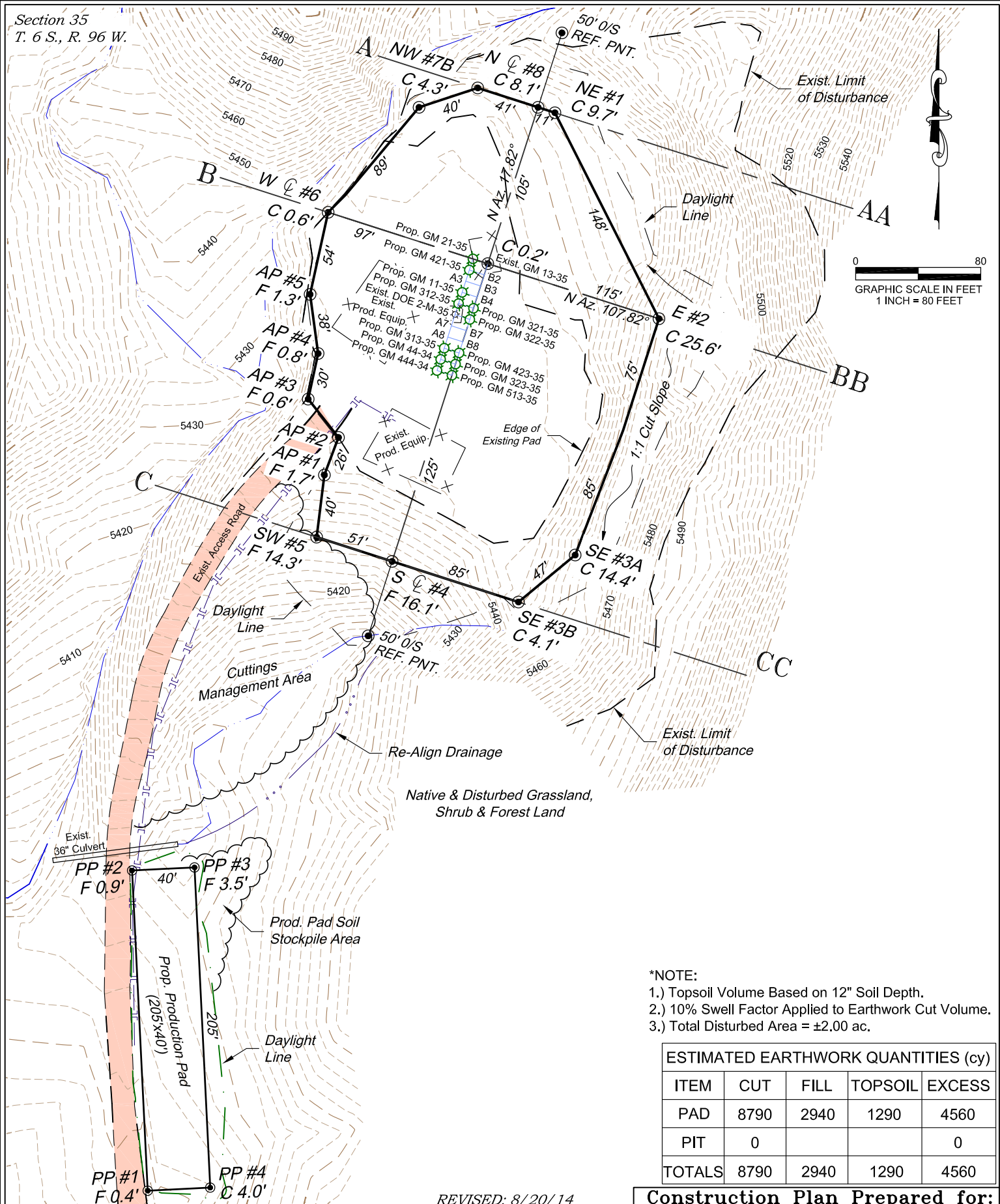


Section 35
T. 6 S., R. 96 W.



- *NOTE:
- 1.) Topsoil Volume Based on 12" Soil Depth.
 - 2.) 10% Swell Factor Applied to Earthwork Cut Volume.
 - 3.) Total Disturbed Area = ±2.00 ac.

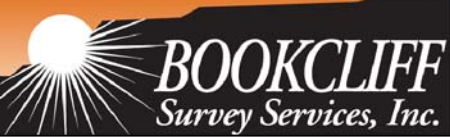
| ESTIMATED EARTHWORK QUANTITIES (cy) | | | | |
|-------------------------------------|------|------|---------|--------|
| ITEM | CUT | FILL | TOPSOIL | EXCESS |
| PAD | 8790 | 2940 | 1290 | 4560 |
| PIT | 0 | | | 0 |
| TOTALS | 8790 | 2940 | 1290 | 4560 |

REVISED: 8/20/14

| | |
|----------|----------|
| SCALE: | 1" = 80' |
| DATE: | 7/29/14 |
| PLAT: | 2 of 7 |
| PROJECT: | Valley |
| DFT: | cs |

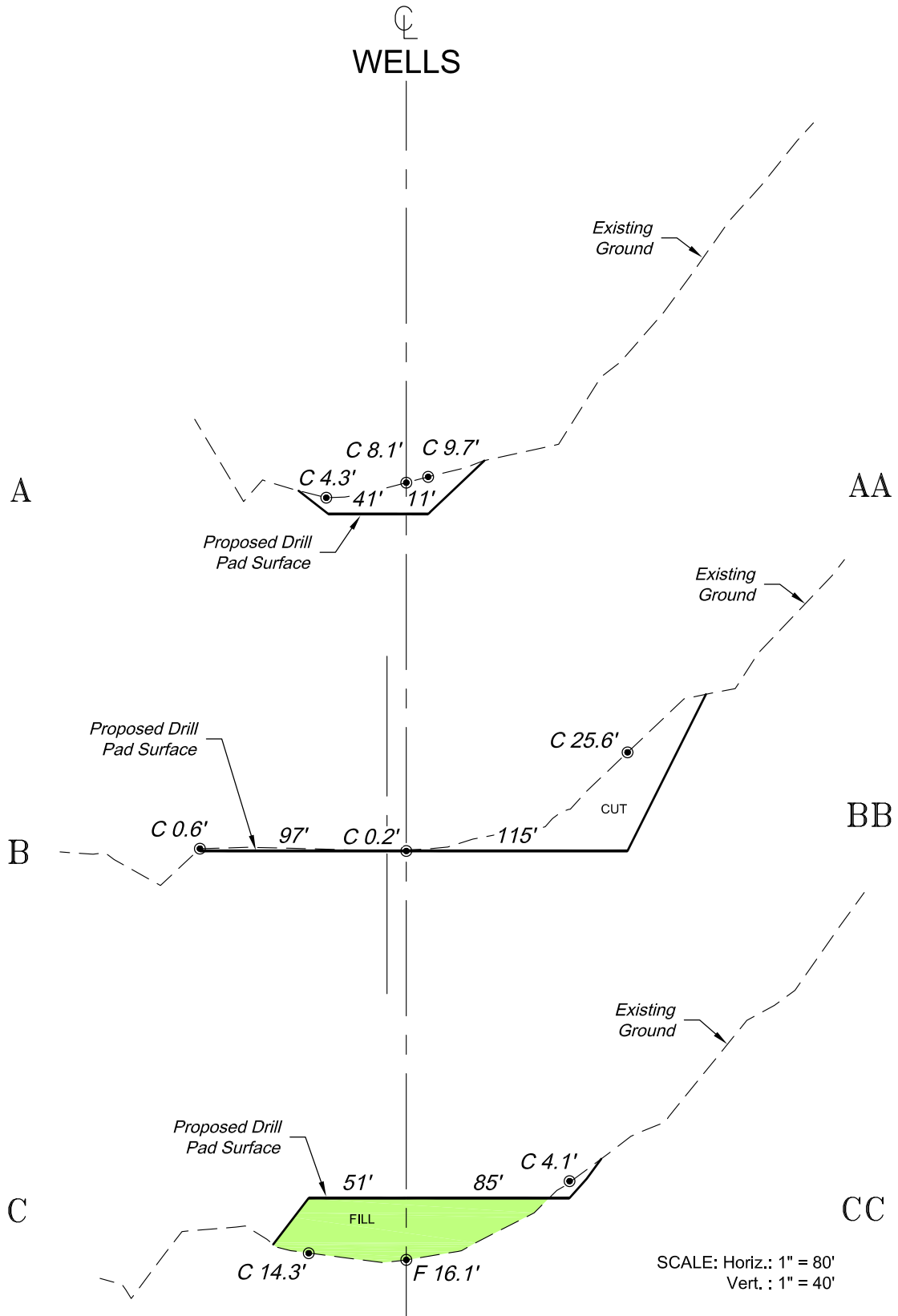
Construction Plan Prepared for:
WPXENERGY WPX Energy Rocky Mountain, LLC
 DOE 2-M-35 Drill Pad - Plat 2
 CONSTRUCTION LAYOUT

136 East Third Street
Rifle, Colorado 81650
Ph. (970) 625-2720
Fax (970) 625-2773



K:\2012 WILLIAMS VALLEY\DOE 2-M-35\DOE 2-M-35 2013.dwg, 8/20/2014 11:46:39 AM

Section 35
T. 6 S., R. 96 W.




SCALE: Horiz.: 1" = 80'
Vert. : 1" = 40'

***NOTE:**
CUT SLOPES: Varies 1.5:1 to 1:1.
FILL SLOPES: 1.5:1,
UNLESS OTHERWISE NOTED.

REVISED: 8/7/14

| | |
|----------|----------|
| SCALE: | As Noted |
| DATE: | 7/29/14 |
| PLAT: | 3 of 7 |
| PROJECT: | Valley |
| DFT: | cs |

Construction Plan Prepared for:
 WPX Energy Rocky Mountain, LLC
 DOE 2-M-35 Drill Pad - Plat 3
CONSTRUCTION LAYOUT
CROSS SECTIONS

136 East Third Street
Rifle, Colorado 81650
Ph. (970) 625-2720
Fax (970) 625-2773



BOOKCLIFF
Survey Services, Inc.

K:\2012 WILLIAMS VALLEY\DOE 2-M-35\DOE 2-M-35 2013.dwg, 8/7/2014 2:29:23 PM