

SECTION 1, TOWNSHIP 2 NORTH, RANGE 66 WEST, 6TH P.M.

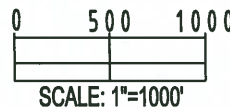


 = EXISTING MONUMENT      = BOTTOM HOLE  
 = PROPOSED WELL      = EXISTING WELL  
 BH = BOTTOM HOLE

1. THIS FIELD SURVEY CONFORMS TO THE MINIMUM STANDARDS SET BY THE C.O.G.C.C., RULE NO. 215
2. BEARINGS AND DISTANCE SHOWN HEREON ARE GRID AND BASED ON THE COLORADO STATE PLANE COORDINATE SYSTEM, NAD 83/2011 BETWEEN MONUMENTS AS LABELED HEREON AND ELEVATIONS SHOWN ARE NAVD 88, AS DERIVED BY GPS OBSERVATIONS.
3. GRID DISTANCES ARE SHOWN, AS MEASURED IN THE FIELD, WITH TIES TO WELLS MEASURED PERPENDICULAR TO SECTION LINES.

BRADLEY L. LAMAN, PLS 38345  
COLORADO LICENSED PROFESSIONAL LAND SURVEYOR  
FOR AND ON BEHALF OF P.F.S., LLC

NOTICE: ACCORDING TO COLORADO LAW YOU MUST COMMENCE ANY LEGAL ACTION BASED UPON ANY DEFECT IN THIS SURVEY WITHIN THREE YEARS AFTER YOU FIRST DISCOVER SUCH DEFECT. IN NO EVENT MAY ANY ACTION BASED UPON ANY DEFECT IN THIS SURVEY BE COMMENCED MORE THAN TEN YEARS FROM THIS SAID DATE OF THIS CERTIFICATION SHOWN HEREON.



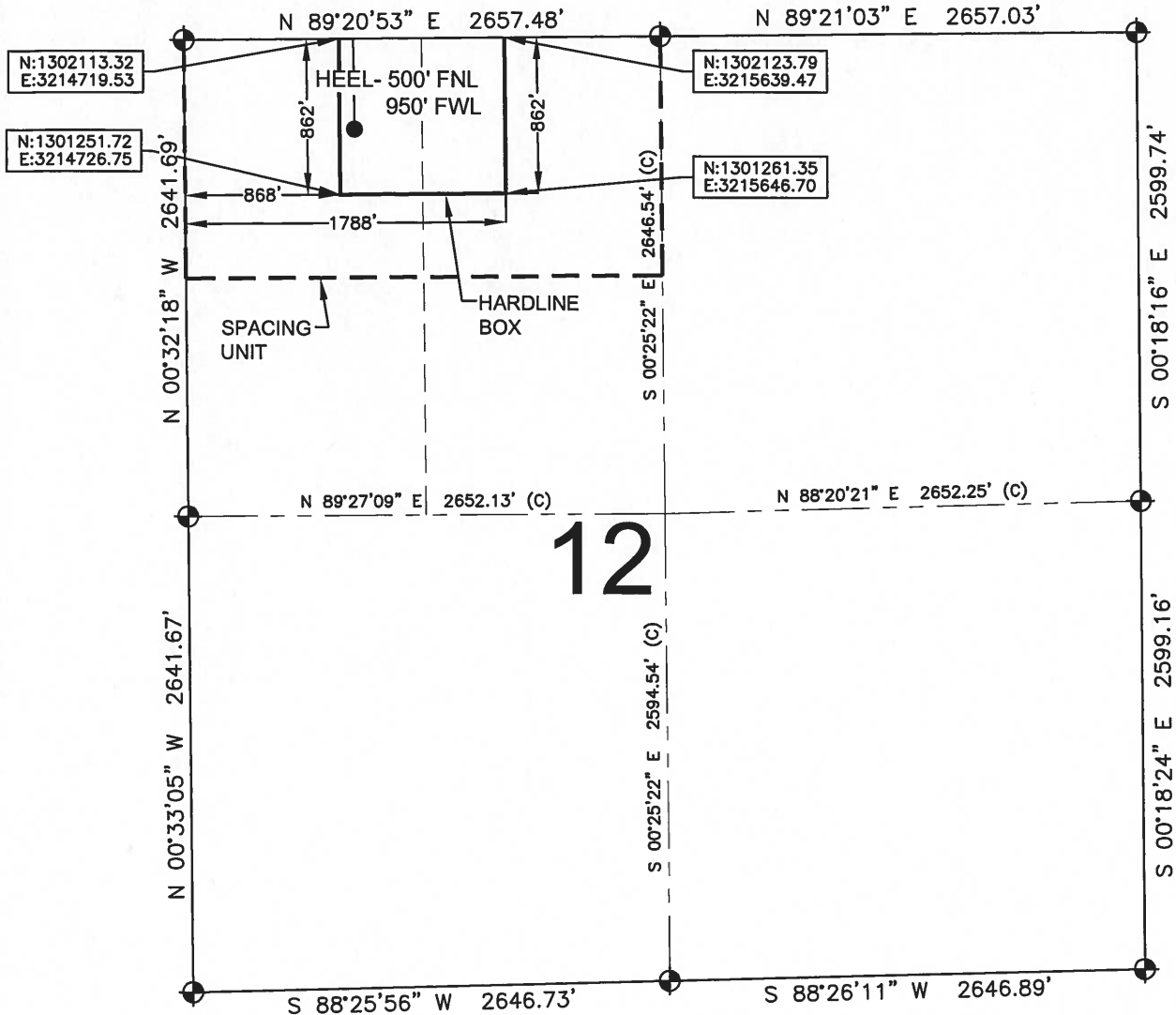
PREPARED BY:

**PFS**  **to**  
Petroleum Field Services, LLC  
1801 W. 13th Ave.  
Denver, CO 80204

FIELD DATE: 10-29-13		SURFACE LOCATION: SE 1/4, SW 1/4, SEC. 1, T2N, R66W, 6TH P.M. WELD COUNTY, COLORADO
DRAWING DATE: 02-28-14		
BY: SME	CHECKED: SMG	

# HARDLINE EXHIBIT: DOLPH 4C-1HZ

SECTION 12, TOWNSHIP 2 NORTH, RANGE 66 WEST, 6TH P.M.



## LEGEND

- ⊕ = EXISTING MONUMENT
- ⊕ = BOTTOM HOLE
- = PROPOSED HEEL
- BH = BOTTOM HOLE

## HEEL LOCATION

NAD83  
 LATITUDE= 40.158771°  
 LONGITUDE= 104.731459°

## QRT/QRT SECTIONS WITHIN PATH OF THE HARDLINE.

NWNW, SEC. 12      NENW, SEC. 12

LATITUDE= 40°09'31.575"  
 LONGITUDE= 104°43'53.253"

## BOTTOM HOLE LOCATION

NAD83  
 LATITUDE= 40.173385°  
 LONGITUDE= 104.731592°

## AVAILABLE FOOTAGE

5685'

LATITUDE= 40°10'24.184"  
 LONGITUDE= 104°43'53.731"

## NOTES:

- THIS DOCUMENT IS NOT A LAND SURVEY PLAT OR IMPROVEMENT SURVEY PLAT. THIS DOCUMENT DOES NOT REFLECT A FIELD SURVEY. SECTION BREAKDOWN, MONUMENTATION AND HORIZONTAL POSITIONS SHOWN ARE BASED ON THE HEEL AND BOTTOM HOLE LOCATION PROVIDED BY ANADARKO PETROLEUM CORPORATION

PREPARED BY:



DRAWING DATE:  
01-29-14

HEEL LOCATION:  
NW 1/4, NW 1/4,  
SEC. 12, T2N, R66W, 6TH P.M.  
WELD COUNTY, COLORADO

SHEET 1 OF 2

BY: SMF  
 CHECKED: SMD

