

OPERATOR: **WPX ENERGY**

WELL NAME: RWF 333-25

FIELD NAME: RULISON

DRILLING RIG: NABORS 577

API #: 05-045-22004

LOCATION: SEC. 25 T 6 S R 94 W

SURFACE HOLE: 1184' FSL , 1392' FEL

BOTTOM HOLE: 2120' FSL , 1764' FEL

SCALE: 1"=100'



533 Bogart Lane, Unit A  
Grand Junction, CO 81505  
Office (970) 424-5162

**RWF 333-25**

COUNTY: GARFIELD

STATE: COLORADO

DRILLING FLUID: LSND

LOGGER: LUKE DAVENPORT

GROUND ELEVATION: 6234'

KELLY BUSHING: 6260'

TVD VS. MD = -105'

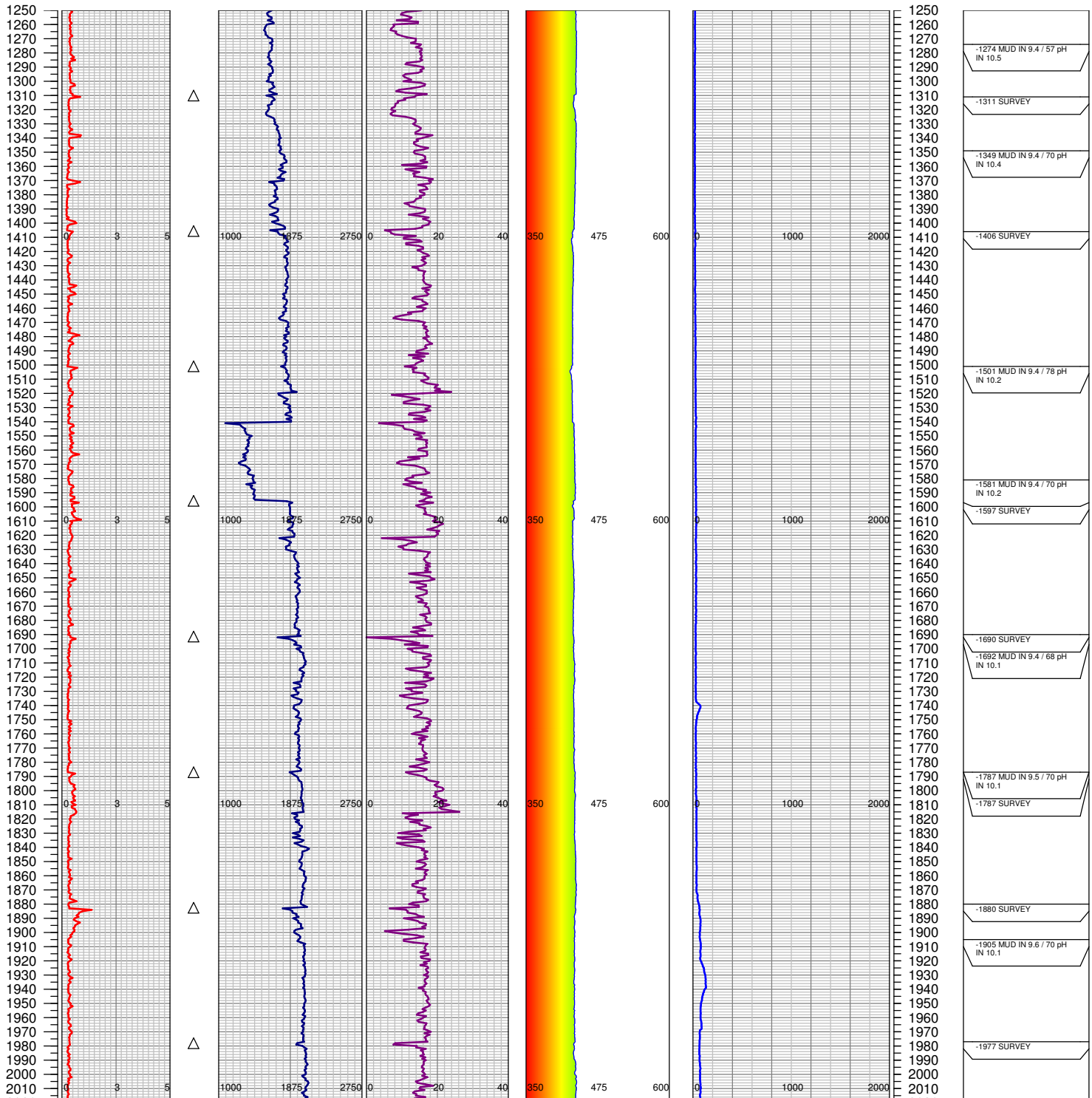
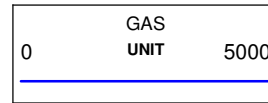
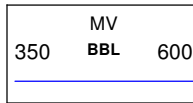
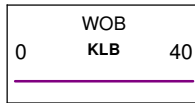
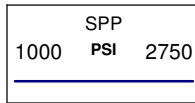
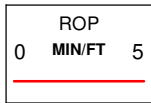
DEPTHS LOGGED: 1250'-8906'

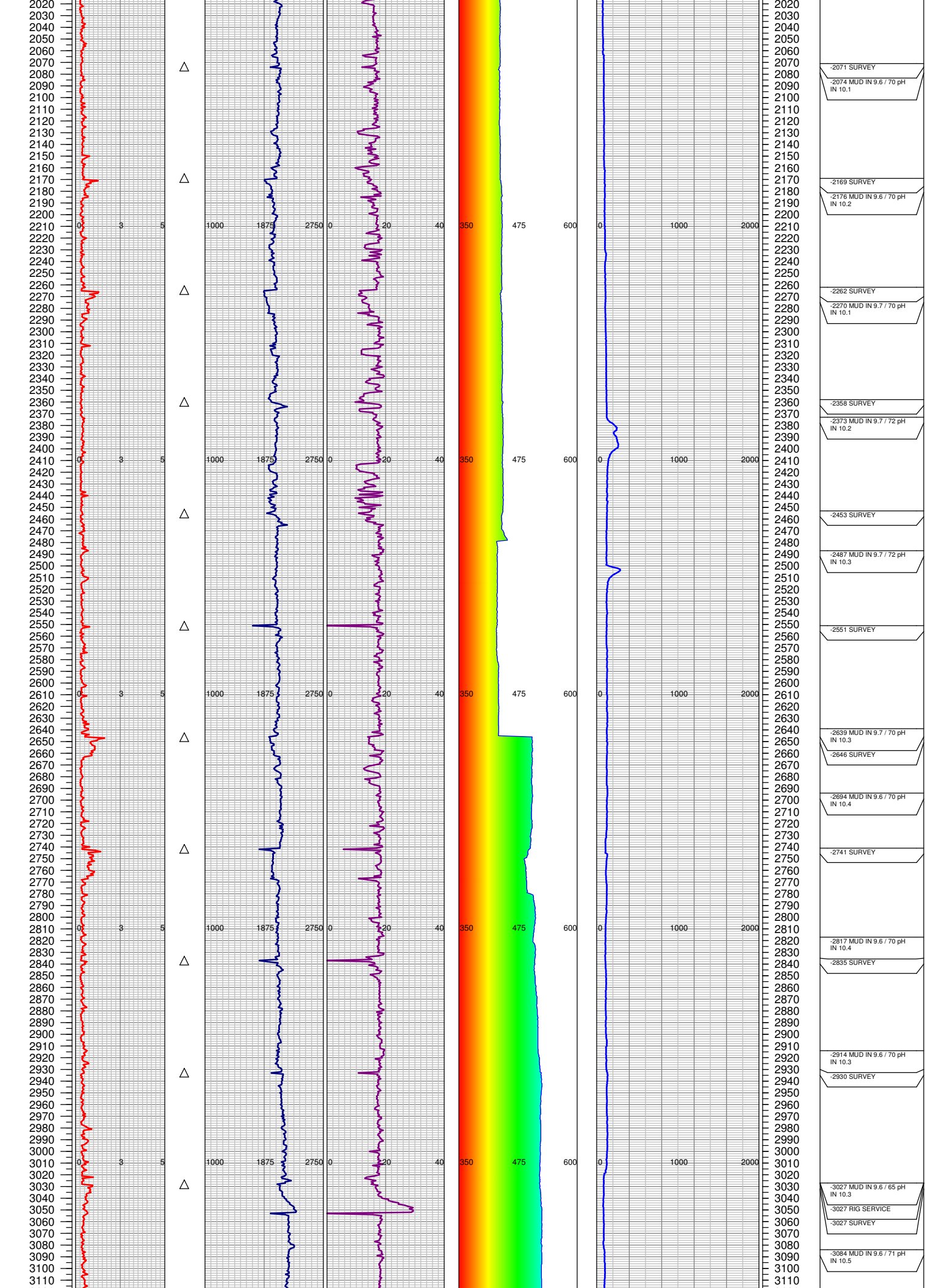
SPUD DATE: 6/15/2014

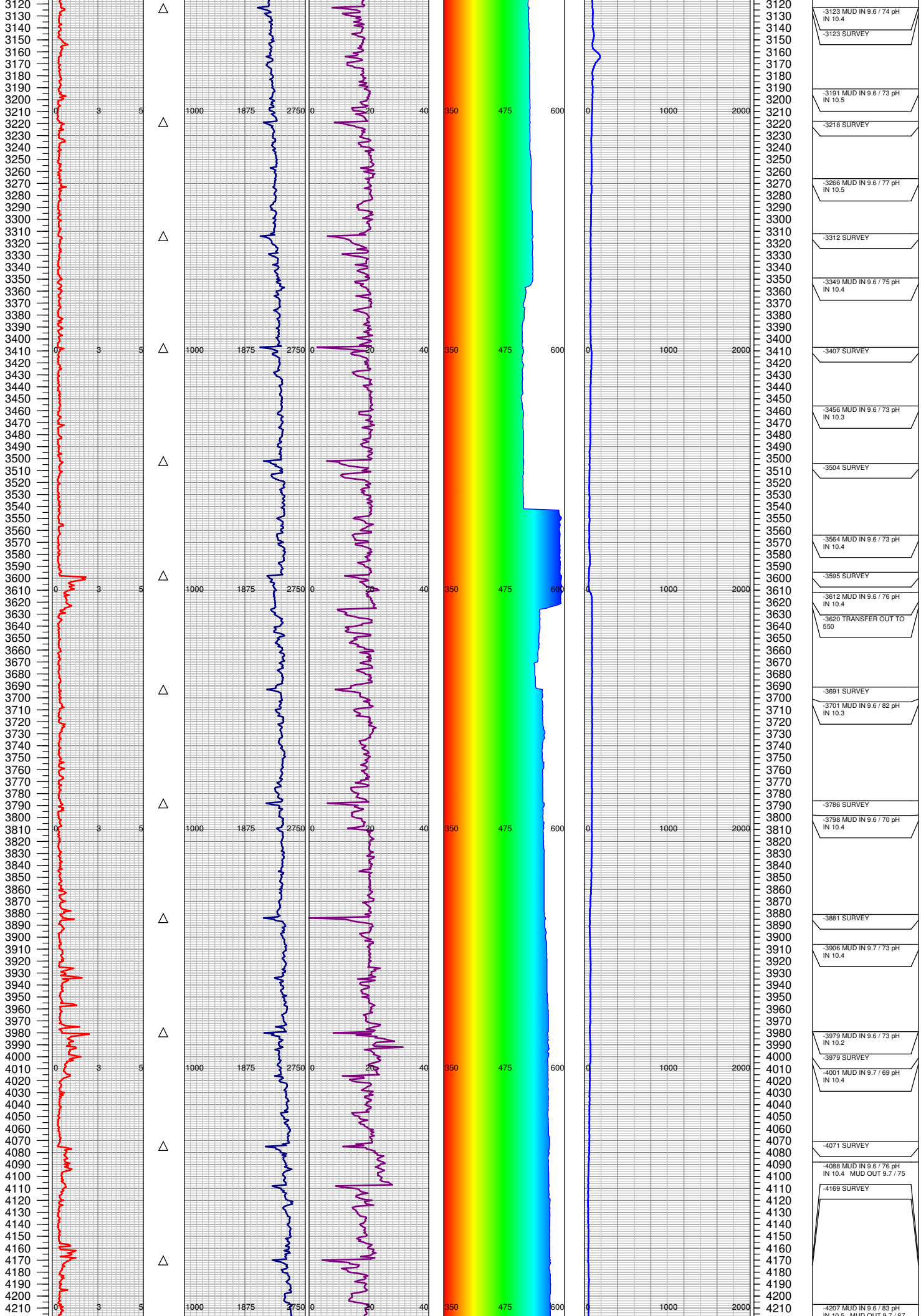
FGS BEGIN LOGGING: 6/17/2014

TD DATE: 6/24/2014

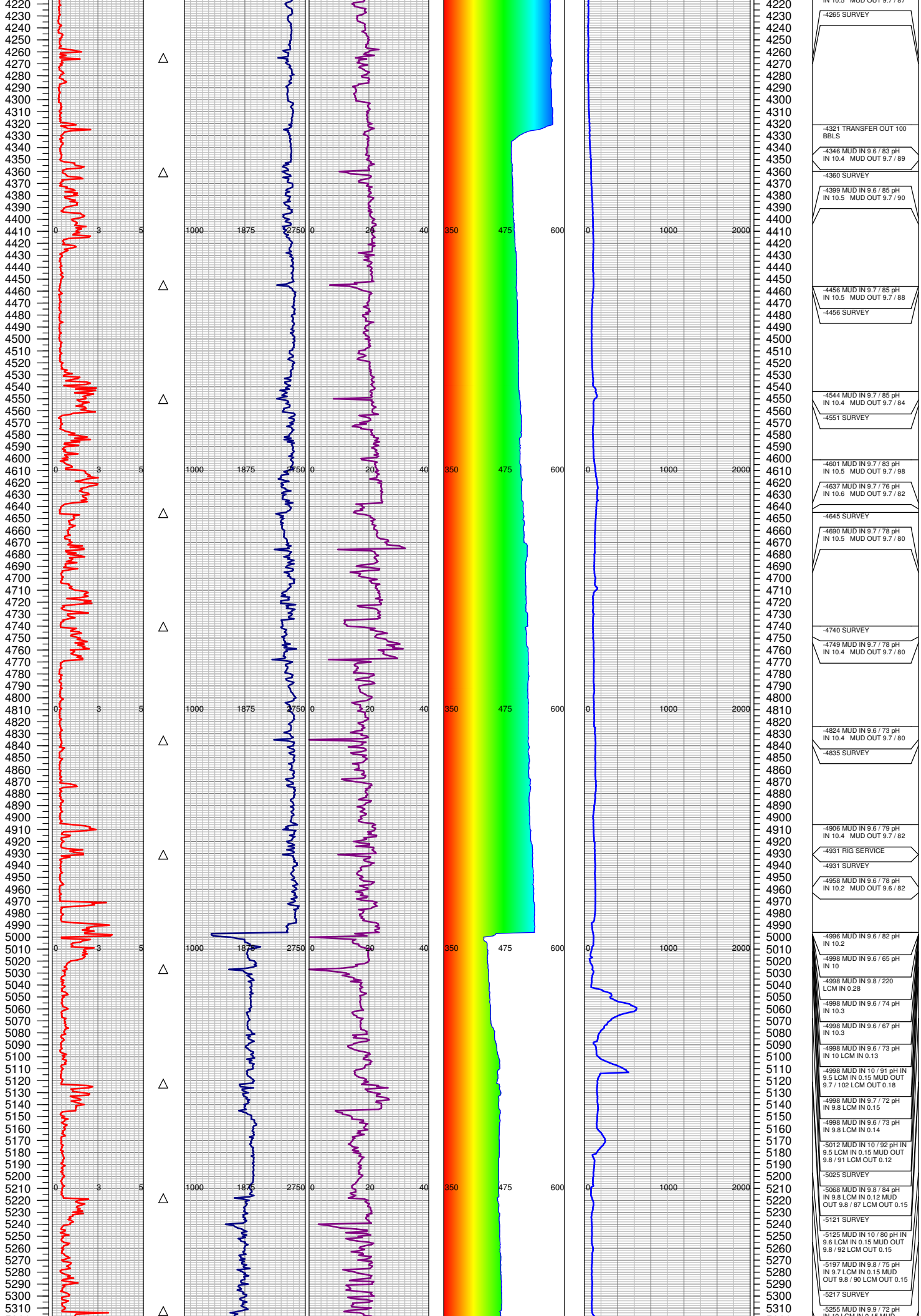
DATES LOGGED: 6/17/2014-6/24/2014



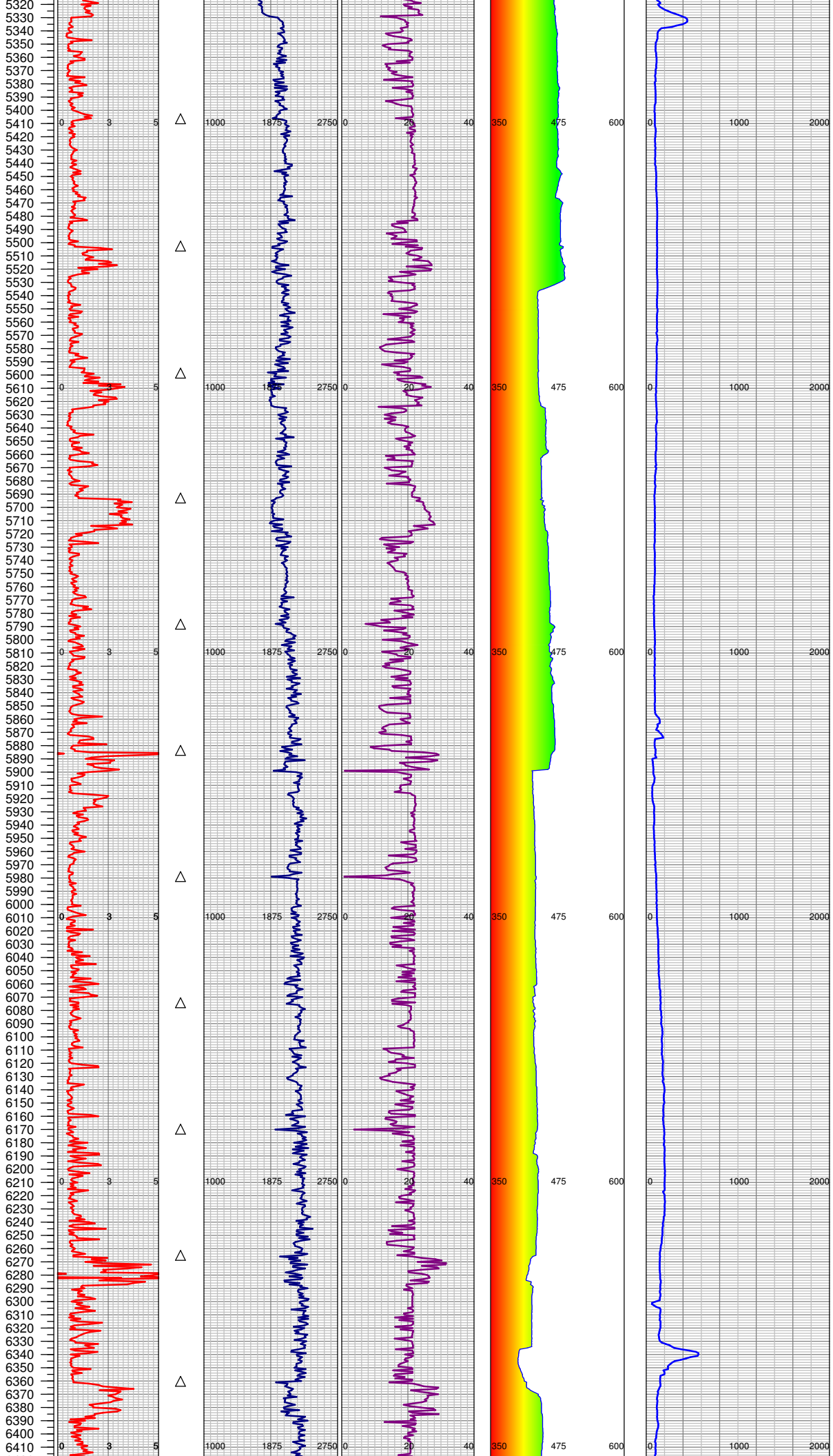




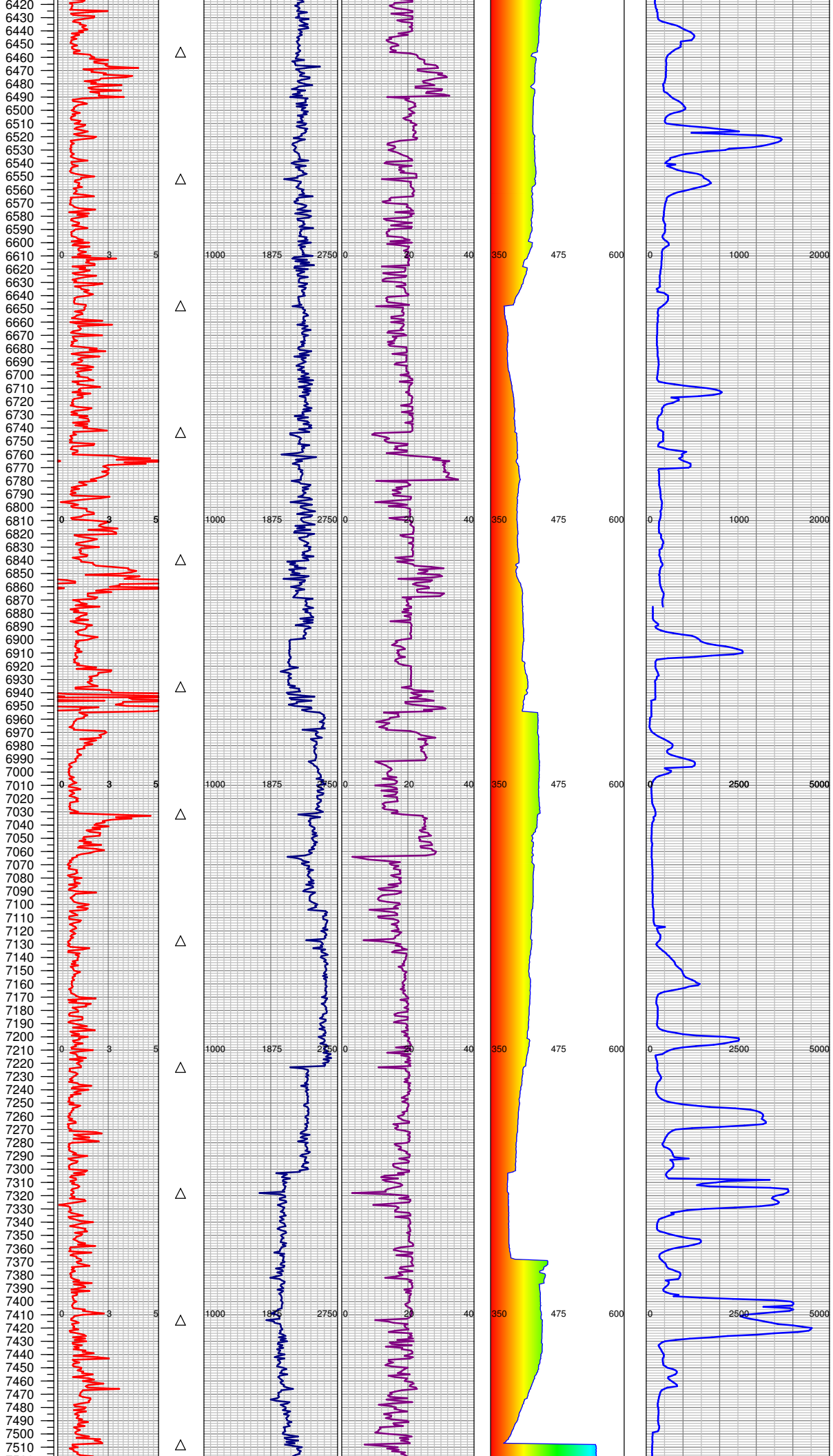
3120	-3123 MUD IN 9.6 / 74 pH IN 10.4
3130	-3123 SURVEY
3140	
3150	
3160	
3170	
3180	
3190	-3191 MUD IN 9.6 / 73 pH IN 10.5
3200	
3210	-3218 SURVEY
3220	
3230	
3240	
3250	
3260	-3266 MUD IN 9.6 / 77 pH IN 10.5
3270	
3280	
3290	
3300	
3310	-3312 SURVEY
3320	
3330	
3340	
3350	-3349 MUD IN 9.6 / 75 pH IN 10.4
3360	
3370	
3380	
3390	
3400	-3407 SURVEY
3410	
3420	
3430	
3440	
3450	
3460	-3456 MUD IN 9.6 / 73 pH IN 10.3
3470	
3480	
3490	
3500	-3504 SURVEY
3510	
3520	
3530	
3540	
3550	
3560	-3564 MUD IN 9.6 / 73 pH IN 10.4
3570	
3580	
3590	
3600	-3595 SURVEY
3610	
3620	-3612 MUD IN 9.6 / 76 pH IN 10.4
3630	-3620 TRANSFER OUT TO 550
3640	
3650	
3660	
3670	
3680	
3690	
3700	-3691 SURVEY
3710	-3701 MUD IN 9.6 / 82 pH IN 10.3
3720	
3730	
3740	
3750	
3760	
3770	
3780	
3790	-3786 SURVEY
3800	-3798 MUD IN 9.6 / 70 pH IN 10.4
3810	
3820	
3830	
3840	
3850	
3860	
3870	
3880	-3881 SURVEY
3890	
3900	
3910	-3906 MUD IN 9.7 / 73 pH IN 10.4
3920	
3930	
3940	
3950	
3960	
3970	
3980	-3979 MUD IN 9.6 / 73 pH IN 10.2
3990	-3979 SURVEY
4000	-4001 MUD IN 9.7 / 69 pH IN 10.4
4010	
4020	
4030	
4040	
4050	
4060	
4070	-4071 SURVEY
4080	
4090	-4088 MUD IN 9.6 / 76 pH IN 10.4 MUD OUT 9.7 / 75
4100	-4169 SURVEY
4110	
4120	
4130	
4140	
4150	
4160	
4170	
4180	
4190	
4200	
4210	-4207 MUD IN 9.6 / 83 pH IN 10.5 MUD OUT 9.7 / 87



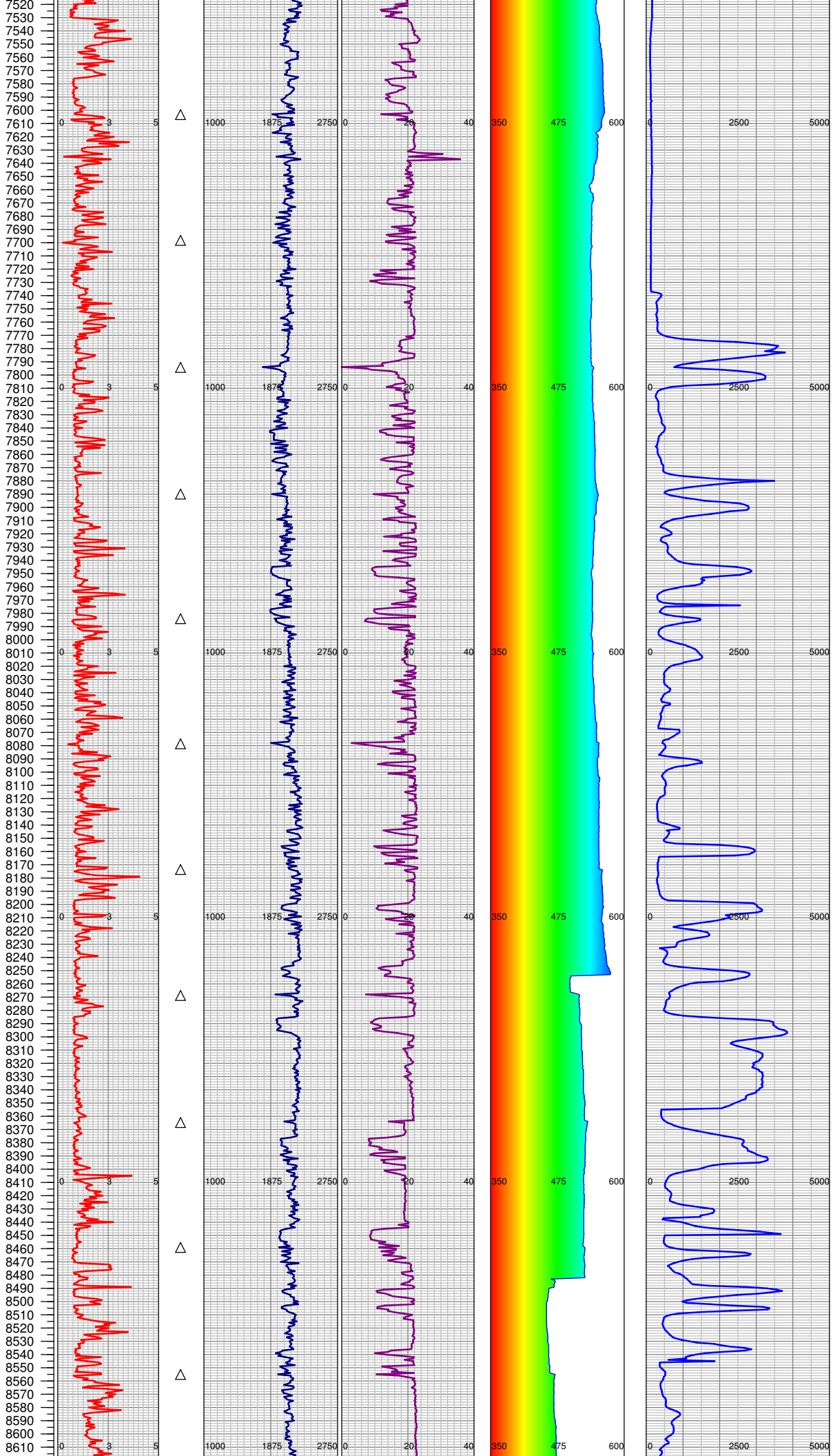
4230	IN 10.3 MUD OUT 9.7 / 87
4265 SURVEY	
4321 TRANSFER OUT 100 BBLs	
4346 MUD IN 9.6 / 83 pH IN 10.4 MUD OUT 9.7 / 89	
4360 SURVEY	
4399 MUD IN 9.6 / 85 pH IN 10.5 MUD OUT 9.7 / 90	
4456 MUD IN 9.7 / 85 pH IN 10.5 MUD OUT 9.7 / 88	
4456 SURVEY	
4544 MUD IN 9.7 / 85 pH IN 10.4 MUD OUT 9.7 / 84	
4551 SURVEY	
4601 MUD IN 9.7 / 83 pH IN 10.5 MUD OUT 9.7 / 98	
4637 MUD IN 9.7 / 76 pH IN 10.6 MUD OUT 9.7 / 82	
4645 SURVEY	
4690 MUD IN 9.7 / 78 pH IN 10.5 MUD OUT 9.7 / 80	
4740 SURVEY	
4749 MUD IN 9.7 / 78 pH IN 10.4 MUD OUT 9.7 / 80	
4824 MUD IN 9.6 / 73 pH IN 10.4 MUD OUT 9.7 / 80	
4835 SURVEY	
4906 MUD IN 9.6 / 79 pH IN 10.4 MUD OUT 9.7 / 82	
4931 RIG SERVICE	
4931 SURVEY	
4958 MUD IN 9.6 / 78 pH IN 10.2 MUD OUT 9.6 / 82	
4996 MUD IN 9.6 / 82 pH IN 10.2	
4998 MUD IN 9.6 / 65 pH IN 10	
4998 MUD IN 9.8 / 220 LCM IN 0.28	
4998 MUD IN 9.6 / 74 pH IN 10.3	
4998 MUD IN 9.6 / 67 pH IN 10.3	
4998 MUD IN 9.6 / 73 pH IN 10 LCM IN 0.15	
4998 MUD IN 10 / 91 pH IN 9.5 LCM IN 0.15 MUD OUT 9.7 / 102 LCM OUT 0.16	
4998 MUD IN 9.7 / 72 pH IN 9.8 LCM IN 0.15	
4998 MUD IN 9.6 / 73 pH IN 9.8 LCM IN 0.14	
5012 MUD IN 10 / 92 pH IN 9.5 LCM IN 0.15 MUD OUT 9.8 / 91 LCM OUT 0.12	
5025 SURVEY	
5068 MUD IN 9.8 / 84 pH IN 9.8 LCM IN 0.12 MUD OUT 9.8 / 87 LCM OUT 0.15	
5121 SURVEY	
5125 MUD IN 10 / 80 pH IN 9.6 LCM IN 0.15 MUD OUT 9.8 / 92 LCM OUT 0.15	
5197 MUD IN 9.8 / 75 pH IN 9.7 LCM IN 0.15 MUD OUT 9.8 / 90 LCM OUT 0.15	
5217 SURVEY	
5255 MUD IN 9.9 / 72 pH	



5320	-5313 SURVEY
5330	-5318 MUD IN 10.1 / 70 pH IN 10.1 LCM IN 0.12 MUD OUT 9.9 / 78 LCM OUT 0.15
5340	-5367 MUD IN 9.9 / 72 pH IN 10.1 LCM IN 0.15 MUD OUT 9.7 / 87 LCM OUT 0.15
5350	-5409 SURVEY
5360	-5422 MUD IN 10.7 / 75 pH IN 10.2 LCM IN 0.12 MUD OUT 10 / 93 LCM OUT 0.15
5370	-5491 MUD IN 10.1 / 81 pH IN 10.2 LCM IN 0.15 MUD OUT 10 / 90 LCM OUT 0.15
5380	-5501 SURVEY
5390	-5522 MUD IN 10.1 / 79 pH IN 10 LCM IN 0.18 MUD OUT 10 / 89 LCM OUT 0.15
5400	-5525 TRANSFER OUT 50 BBLS
5410	-5596 MUD IN 10.1 / 70 pH IN 10.2 LCM IN 0.18 MUD OUT 10 / 95 LCM OUT 0.15
5420	-5596 SURVEY
5430	-5617 MUD IN 10.7 / 73 pH IN 10.2 LCM IN 0.18 MUD OUT 10 / 82 LCM OUT 0.15
5440	-5624 SENT SWEET
5450	-5658 SENT SWEEP TRANSFER 15 BBLS INTO SWEEP
5460	-5673 MUD IN 10.1 / 75 pH IN 10.4 LCM IN 0.18 MUD OUT 10 / 93 LCM OUT 0.15
5470	-5692 SURVEY
5480	-5696 MUD IN 10.1 / 73 pH IN 10.3 LCM IN 0.18 MUD OUT 10 / 89 LCM OUT 0.14
5490	-5711 MUD IN 10 / 80 pH IN 10.3 LCM IN 0.18 MUD OUT 10 / 104 LCM OUT 0.14
5500	-5772 MUD IN 10.1 / 80 pH IN 10.5 LCM IN 0.18 MUD OUT 10.1 / 98 LCM OUT 0.15
5510	-5788 SURVEY
5520	-5813 MUD IN 10.2 / 80 pH IN 10.3 LCM IN 0.15 MUD OUT 10.1 / 88 LCM OUT 0.14
5530	-5883 MUD IN 10.3 / 96 pH IN 10.3 LCM IN 0.17 MUD OUT 10.3 / 113 LCM OUT 0.16
5540	-5883 SURVEY
5550	-5899 MUD IN 10.4 / 87 pH IN 10.5 LCM IN 0.2
5560	-5899 SENT SWEEP
5570	-5926 MUD IN 10.5 / 89 pH IN 10 LCM IN 0.22
5580	-5934 MUD IN 10.5 / 83 LCM IN 0.22
5590	-5978 SURVEY
5600	-6007 MUD IN 10.4 / 75 pH IN 10.1 LCM IN 0.2 MUD OUT 10.5 / 87 LCM OUT 0.2
5610	-6074 SURVEY
5620	-6076 MUD IN 10.5 / 83 pH IN 10.1 LCM IN 0.17 MUD OUT 10.5 / 85 LCM OUT 0.2
5630	-6170 MUD IN 10.5 / 82 pH IN 10.1 LCM IN 0.17 MUD OUT 10.4 / 85 LCM OUT 0.17
5640	-6170 SURVEY
5650	-6189 SWEEP SENT
5660	-6239 MUD IN 10.6 / 83 pH IN 10.3 LCM IN 0.17 MUD OUT 10.5 / 96 LCM OUT 0.28
5670	-6265 SURVEY
5680	-6275 MUD IN 10.6 / 75 pH IN 10.3 LCM IN 0.2 MUD OUT 10.5 / 94 LCM OUT 0.25
5690	-6298 MUD IN 10.7 / 87 pH IN 10.2 LCM IN 0.25 MUD OUT 10.6 / 105 LCM OUT 0.2
5700	-6338 GA - Zeroed
5710	-6361 MUD IN 10.6 / 86 pH IN 10.2 LCM IN 0.2 MUD OUT 10.5 / 90 LCM OUT 0.2
5720	-6361 SURVEY
5730	-6381 MUD IN 10.6 / 72 pH IN 10.5 LCM IN 0.2 MUD OUT 10.5 / 80 LCM OUT 0.2
5740	
5750	
5760	
5770	
5780	
5790	
5800	
5810	
5820	
5830	
5840	
5850	
5860	
5870	
5880	
5890	
5900	
5910	
5920	
5930	
5940	
5950	
5960	
5970	
5980	
5990	
6000	
6010	
6020	
6030	
6040	
6050	
6060	
6070	
6080	
6090	
6100	
6110	
6120	
6130	
6140	
6150	
6160	
6170	
6180	
6190	
6200	
6210	
6220	
6230	
6240	
6250	
6260	
6270	
6280	
6290	
6300	
6310	
6320	
6330	
6340	
6350	
6360	
6370	
6380	
6390	
6400	
6410	



6420	-6429 MUD IN 10.7 / 74 pH IN 10.2 LCM IN 0.22 MUD OUT 10.6 / 90 LCM OUT 0.2
6430	
6440	
6450	
6460	-6460 SENT SWEEP
6470	
6480	-6468 MUD IN 10.8 / 83 pH IN 10.5 LCM IN 0.23 MUD OUT 10.5 / 115 LCM OUT 0.25
6490	
6500	-6492 MUD IN 10.8 / 84 pH IN 10.5 LCM IN 0.22 MUD OUT 10.6 / 113 LCM OUT 0.2
6510	
6520	
6530	
6540	-6551 MUD IN 10.7 / 76 pH IN 10.5 LCM IN 0.22 MUD OUT 10.6 / 93 LCM OUT 0.2
6550	
6560	-6551 SURVEY
6570	
6580	-6579 MUD IN 10.8 / 78 pH IN 10.5 LCM IN 0.22 MUD OUT 10.6 / 94 LCM OUT 0.2
6590	
6600	-6598 SENT SWEEP
6610	
6620	-6617 SENT SWEEP
6630	
6640	-6631 MUD IN 10.9 / 78 pH IN 10.5 LCM IN 0.22 MUD OUT 10.8 / 94 LCM OUT 0.22
6650	
6660	-6646 MUD IN 10.9 / 80 pH IN 10.4 LCM IN 0.25
6670	
6680	-6646 SENT SWEEP
6690	
6700	-6646 SURVEY
6710	
6720	-6677 MUD IN 10.9 / 88 pH IN 10.3 LCM IN 0.25 MUD OUT 10.9 / 89
6730	
6740	-6736 MUD IN 10.8 / 73 pH IN 10.4 LCM IN 0.25 MUD OUT 10.8 / 92 LCM OUT 0.24
6750	
6760	
6770	-6741 SURVEY
6780	
6790	-6761 MUD IN 10.9 / 75 pH IN 10.5 LCM IN 0.25 MUD OUT 10.8 / 100 LCM OUT 0.25
6800	
6810	-6772 MUD IN 10.9 / 74 pH IN 10.5 LCM IN 0.25 MUD OUT 10.8 / 87 LCM OUT 0.25
6820	
6830	
6840	-6816 MUD IN 11 / 81 pH IN 10.3 LCM IN 0.22 MUD OUT 11 / 80 LCM OUT 0.25
6850	
6860	
6870	-6837 SURVEY
6880	
6890	-6847 MUD IN 10.9 / 72 pH IN 10.5 LCM IN 0.25 MUD OUT 10.9 / 80 LCM OUT 0.25
6900	
6910	-6871 MUD IN 10.9 / 73 pH IN 10.2 LCM IN 0.23 MUD OUT 10.8 / 94 LCM OUT 0.25
6920	
6930	
6940	-6875 NOTICE CHANGE IN GAS SCALE FROM 0-2000 TO 0-5000 AT 6875
6950	
6960	-6912 SENT SWEEP
6970	
6980	-6928 MUD IN 10.9 / 74 pH IN 10.2 LCM IN 0.2 MUD OUT 10.7 / 95 LCM OUT 0.25
6990	
7000	
7010	-6932 SURVEY
7020	
7030	-6942 MUD IN 10.8 / 82 pH IN 10.2 LCM IN 0.22 MUD OUT 10.7 / 95 LCM OUT 0.25
7040	
7050	
7060	-6954 MUD IN 10.9 / 76 pH IN 10.2 LCM IN 0.23 MUD OUT 10.7 / 91 LCM OUT 0.25
7070	
7080	
7090	-6954 SEND SLUG
7100	
7110	-6954 SWEEP SENT TANK 8 ON
7120	
7130	-6955 SWEEP SENT
7140	
7150	-6990 MUD IN 11 / 70 pH IN 10.3 LCM IN 0.25 MUD OUT 10.9 / 75 LCM OUT 0.22
7160	
7170	-7031 SURVEY
7180	
7190	-7035 MUD IN 11 / 75 pH IN 10.4 LCM IN 0.23 MUD OUT 10.8 / 82 LCM OUT 0.25
7200	
7210	-7096 MUD IN 11 / 72 pH IN 10.2 LCM IN 0.25 MUD OUT 10.9 / 80 LCM OUT 0.22
7220	
7230	-7127 SWEEP SENT
7240	
7250	-7127 SURVEY
7260	
7270	-7168 MUD IN 11.1 / 82 pH IN 10.2 LCM IN 0.25 MUD OUT 10.7 / 92 LCM OUT 0.22
7280	
7290	
7300	-7223 MUD IN 11.2 / 85 pH IN 10.3 LCM IN 0.23 MUD OUT 11 / 89 LCM OUT 0.25
7310	
7320	-7223 SURVEY
7330	
7340	-7272 MUD IN 11.2 / 84 pH IN 10.2 LCM IN 0.27 MUD OUT 11.1 / 92 LCM OUT 0.25
7350	
7360	
7370	-7318 SURVEY
7380	
7390	-7319 MUD IN 11.3 / 73 pH IN 10 LCM IN 0.35 MUD OUT 11.2 / 91 LCM OUT 0.35
7400	
7410	
7420	-7404 MUD IN 11.4 / 70 pH IN 10.1 LCM IN 0.3 MUD OUT 11.2 / 75 LCM OUT 0.3
7430	
7440	-7412 SURVEY
7450	
7460	-7414 RIG SERVICE
7470	
7480	-7444 MUD IN 11.5 / 69 pH IN 10 LCM IN 0.28 MUD OUT 11.3 / 69 LCM OUT 0.26
7490	
7500	
7510	-7501 MUD IN 11.7 / 80 pH IN 10.2 LCM IN 0.3 MUD OUT 11.4 / 75 LCM OUT 0.3



7520	-7509 MUD IN 11.6 / 125 pH IN 10 LCM IN 0.35
7530	-7509 MUD IN 11.6 / 95 pH IN 9.9 LCM IN 0.35
7540	-7509 SURVEY
7550	-7509 SENT SWEEP
7560	-7546 MUD IN 11.6 / 95 pH IN 9.8 LCM IN 0.3 MUD OUT 11.3 / 115 LCM OUT 0.35
7570	-7604 MUD IN 11.6 / 87 pH IN 9.8 LCM IN 0.3 MUD OUT 11.4 / 110 LCM OUT 0.35
7580	-7604 SURVEY
7590	-7636 MUD IN 11.6 / 77 pH IN 9.9 LCM IN 0.32 MUD OUT 11.3 / 105 LCM OUT 0.34
7600	-7700 MUD IN 11.6 / 79 pH IN 9.8 LCM IN 0.33 MUD OUT 11.4 / 110 LCM OUT 0.3
7610	-7712 MUD IN 11.6 / 80 pH IN 10 LCM IN 0.3 MUD OUT 11.5 / 89 LCM OUT 0.28
7620	-7760 MUD IN 11.6 / 82 pH IN 10.2 LCM IN 0.3 MUD OUT 11.5 / 93 LCM OUT 0.3
7630	-7793 SURVEY
7640	-7794 MUD IN 11.6 / 80 pH IN 10.2 LCM IN 0.3 MUD OUT 11.5 / 110 LCM OUT 0.3
7650	-7839 MUD IN 11.6 / 78 pH IN 10.2 LCM IN 0.32 MUD OUT 11.3 / 107 LCM OUT 0.3
7660	-7878 MUD IN 11.6 / 83 pH IN 10.4 LCM IN 0.32 MUD OUT 11.5 / 103 LCM OUT 0.3
7670	-7888 SURVEY
7680	-7933 MUD IN 11.7 / 87 pH IN 10.4 LCM IN 0.32 MUD OUT 11.5 / 117 LCM OUT 0.3
7690	-7983 MUD IN 11.7 / 92 pH IN 10.2 LCM IN 0.3 MUD OUT 11.4 / 120 LCM OUT 0.3
7700	-7983 SURVEY
7710	-8014 MUD IN 11.7 / 95 pH IN 10.3 LCM IN 0.32 MUD OUT 11.3 / 115 LCM OUT 0.3
7720	-8069 MUD IN 11.7 / 105 pH IN 10.4 LCM IN 0.32 MUD OUT 11.5 / 120 LCM OUT 0.3
7730	-8078 SURVEY
7740	-8099 MUD IN 11.7 / 107 pH IN 10.3 LCM IN 0.3 MUD OUT 11.6 / 125 LCM OUT 0.3
7750	-8150 MUD IN 11.7 / 117 pH IN 10.3 LCM IN 0.3 MUD OUT 11.6 / 140 LCM OUT 0.31
7760	-8174 SURVEY
7770	-8196 MUD IN 11.7 / 123 pH IN 10.2 LCM IN 0.3 MUD OUT 11.6 / 170 LCM OUT 0.3
7780	-8268 SURVEY
7790	-8274 MUD IN 11.6 / 125 pH IN 10.1 LCM IN 0.35
7800	-8282 MUD IN 11.5 / 154 LCM IN 0.35
7810	-8335 MUD IN 11.7 / 115 pH IN 10.1 LCM IN 0.3
7820	-8348 MUD IN 11.5 / 150 LCM IN 0.3
7830	-8364 MUD IN 11.6 / 155 LCM IN 0.3
7840	-8364 SURVEY
7850	-8364 MUD IN 11.7 / 107 pH IN 10 LCM IN 0.3
7860	-8398 MUD IN 11.8 / 94 pH IN 9.9 LCM IN 0.3
7870	-8406 MUD IN 11.8 / 123 LCM IN 0.3
7880	-8441 MUD IN 11.8 / 91 pH IN 9.9 LCM IN 0.3
7890	-8451 MUD IN 11.7 / 120 LCM IN 0.28
7900	-8459 SURVEY
7910	-8468 MUD IN 11.8 / 89 pH IN 9.9 LCM IN 0.28
7920	-8476 MUD IN 11.7 / 125 LCM IN 0.28
7930	-8513 MUD IN 11.8 / 89 pH IN 10 LCM IN 0.28
7940	-8519 MUD IN 11.8 / 105 LCM IN 0.28
7950	-8550 MUD IN 11.8 / 87 pH IN 10 LCM IN 0.3
7960	-8555 MUD IN 11.7 / 102 LCM IN 0.3
7970	
7980	
7990	
8000	
8010	
8020	
8030	
8040	
8050	
8060	
8070	
8080	
8090	
8100	
8110	
8120	
8130	
8140	
8150	
8160	
8170	
8180	
8190	
8200	
8210	
8220	
8230	
8240	
8250	
8260	
8270	
8280	
8290	
8300	
8310	
8320	
8330	
8340	
8350	
8360	
8370	
8380	
8390	
8400	
8410	
8420	
8430	
8440	
8450	
8460	
8470	
8480	
8490	
8500	
8510	
8520	
8530	
8540	
8550	
8560	
8570	
8580	
8590	
8600	
8610	



TOTAL DEPTH =    8906'

FGS RELEASED:    6/24/2014