

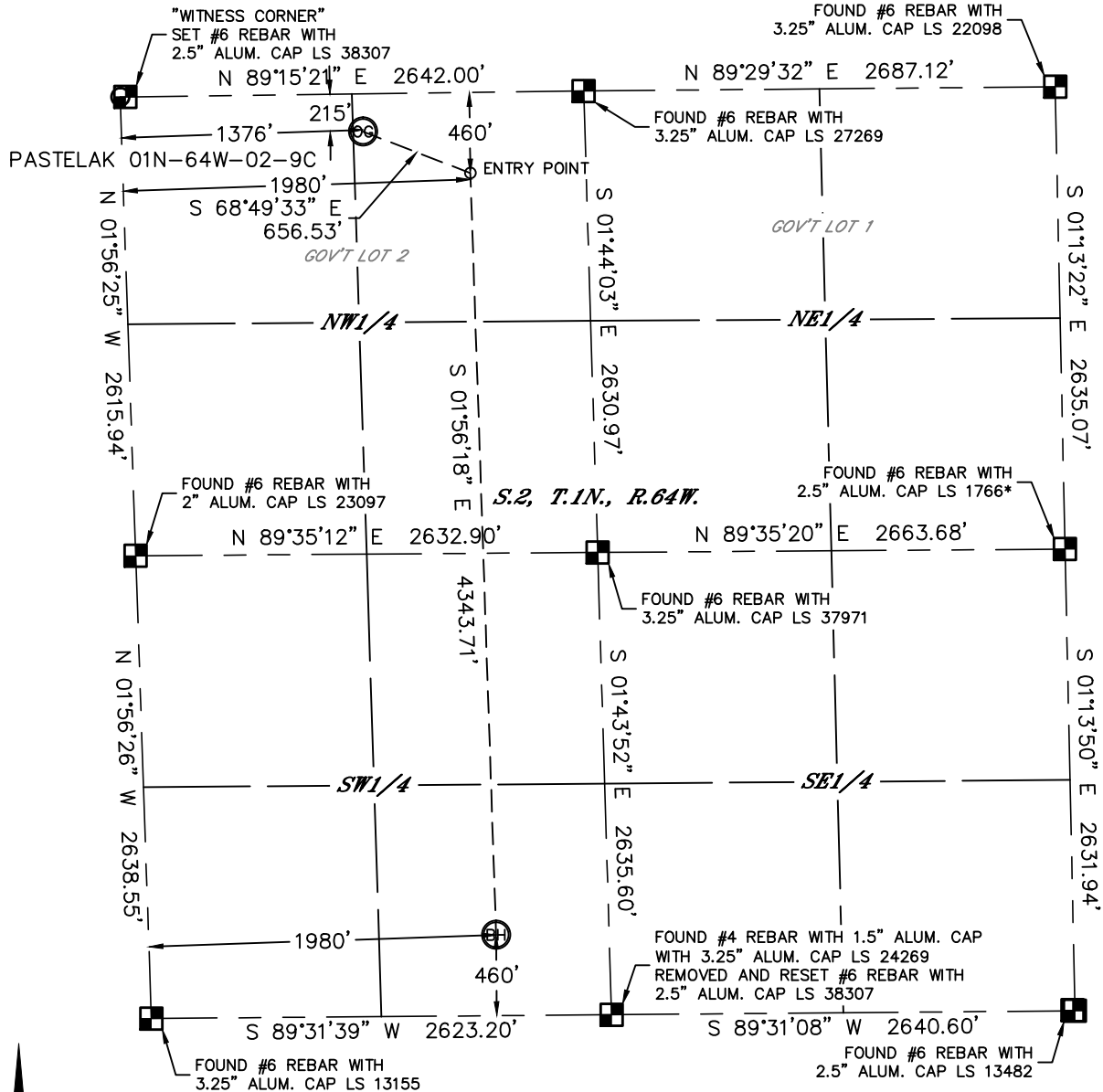


Lat40°, Inc. 1635 Foxtrail Drive, Suite 325 Loveland, CO 970-776-3321

WELL LOCATION CERTIFICATE

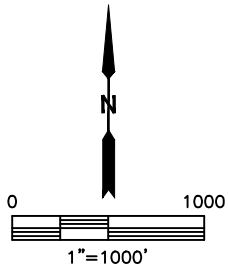
SECTION: 2
TOWNSHIP: 1N
RANGE: 64W

THIS MAP DOES NOT REPRESENT A BOUNDARY SURVEY



In accordance with a request from Arthur Beecher with VERDAD OIL AND GAS CORPORATION Lat40°, Inc. has determined the surface location of the PASTELAK 01N-64W-02-9C to be 215' from the NORTH line and 1376' from the WEST line and the bottom hole to be 460' from the SOUTH line and 1980' from the WEST line as measured at right angles from the section lines of Section 2, Township 1 North, Range 64 West of the Sixth Principal Meridian, County of Weld, State of Colorado.

I hereby state that this Well Location Certificate was prepared by me, or under my direct supervision, that the fieldwork was completed on 6/24/2014, for and on behalf of VERDAD OIL AND GAS CORPORATION. That this is not a Land Survey Plat or an Improvement Survey Plat, and that it is not to be relied upon for establishment of fence, building, or other future improvement lines.



NOTE:

- 1) Bearings shown are Grid Bearings of the Colorado State Plane Coordinate System, North Zone, North American Datum 1983. The lineal dimensions as contained herein are based upon the "U.S. Survey Foot."
- 2) Ground elevations are based on an observed GPS elevation (NAVD 1988 DATUM).
- 3) IMPROVEMENTS: See LOCATION DRAWING for all visible improvements within 500' of disturbed area.
- 4) SURFACE USE: CROP LAND
- 5) INSTRUMENT OPERATOR: WYATT HALL
- 6) NEAREST CULTURAL ITEMS:
BUILDING: ±632' NW
BUILDING UNIT: ±698' W
HIGH OCCUPANCY BUILDING UNIT: +5280'
DESIGNATED OUTSIDE ACTIVITY AREA: +5280'
PUBLIC ROAD: ±1279' NE (CR 14)
ABOVEGROUND UTILITY: ±857' SW
RAILROAD: +5280'
PROPERTY LINE: ±215' N

SURFACE LOCATION

LAT: 40.08706°N
LONG: 104.52288°W
PDOP: 2.1
ELEV: 5011'
1/4,1/4: NENW

BOTTOM HOLE

LAT: 40.07447°N
LONG: 104.52035°W

ENTRY POINT

LAT: 40.08639°N
LONG: 104.52070°W

LEGEND

- = ALIQUOT MONUMENT AS DESCRIBED
- = CALCULATED POSITION



Kyle E. Rutz—On behalf of Lat40°, Inc.
Colorado Licensed Professional
Land Surveyor No. 38307

DATE: 8/19/2014
PROJECT#: 2014105

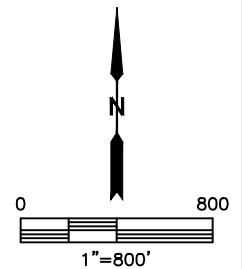
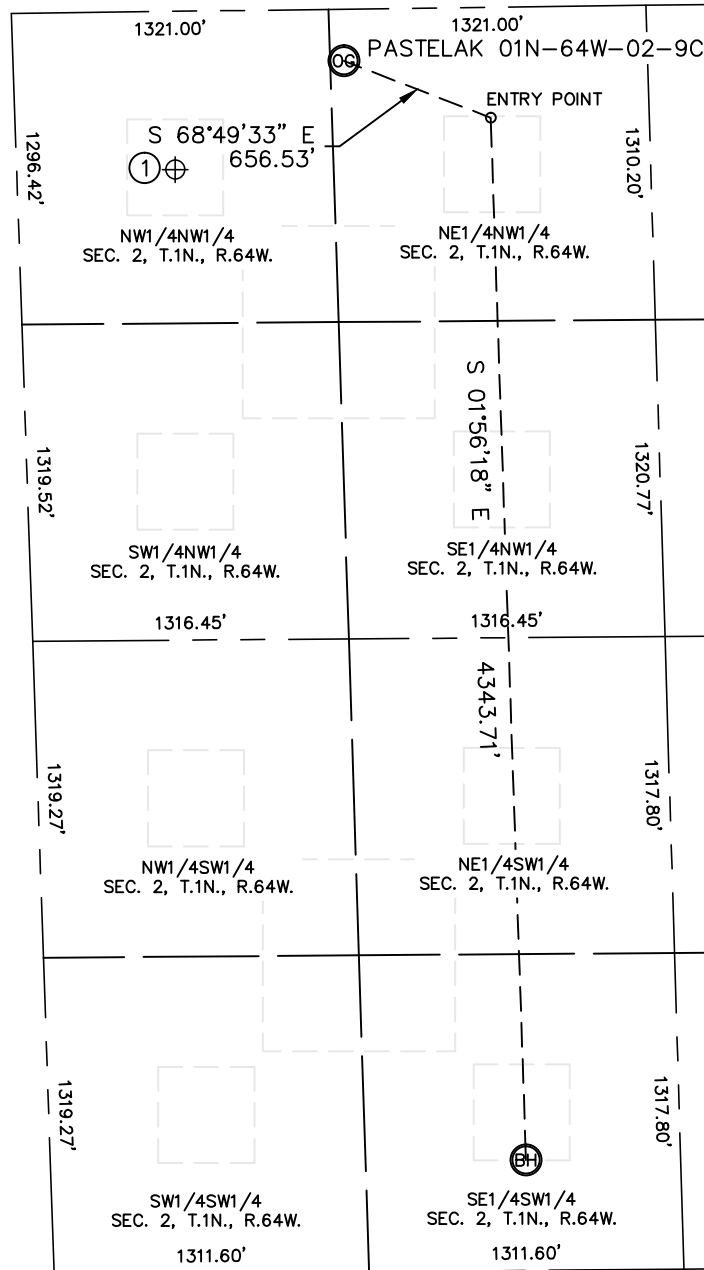


Lat40°, Inc. 1635 Foxtrail Drive, Suite 325 Loveland, CO 970-776-3321

SITE SKETCH

PASTELAK 01N-64W-02-9C

SECTION: 2
TOWNSHIP: 1N
RANGE: 64W



WELL NO.	WELL NAME	SHL FOOTAGE			SHL LAT°	SHL LONG°	PDOP	ELEV (FT.)	1/4/1/4	
1	SCHWEITZER 11-2	660	FNL	660	FWL	40.08585	-104.52534	N/A	5026	NWNW

NOTE: THE ABANDONED WELL DATA SHOWN IN RED ABOVE WAS OBTAINED FROM COGCC SCOUT CARDS.

DATE: 7/10/2014
PROJECT#: 2014105