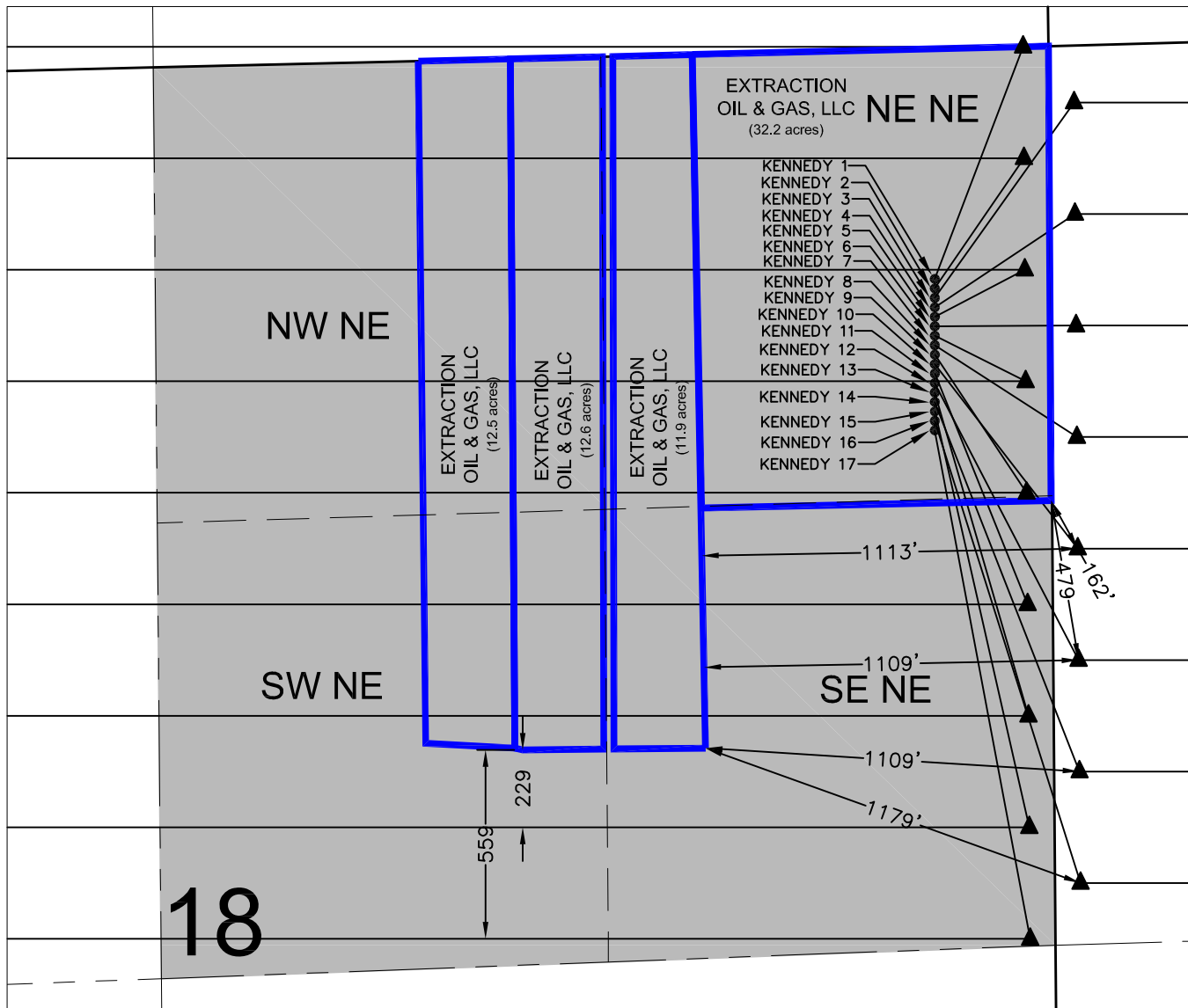


LEASE DRAWING: KENNEDY 18-D



LEGEND

- ⊕ = EXISTING MONUMENT
- = PROPOSED WELL
- ⊕ = BOTTOM HOLE
- ◆ = EXISTING WELL
- ▲ = LANDING POINT
- = LEASE LINES

NOTES:

KENNEDY 1 TO BE AT 681' FNL, 342' FEL.
 BOTTOM HOLE AT 109' FSL & 460' FWL, SEC. 7.
 KENNEDY 2 TO BE AT 709' FNL, 342' FEL.
 BOTTOM HOLE AT 300' FNL & 460' FEL, SEC. 17.
 KENNEDY 3 TO BE AT 737' FNL, 342' FEL.
 BOTTOM HOLE AT 221' FNL & 460' FWL.
 KENNEDY 4 TO BE AT 765' FNL, 342' FEL.
 BOTTOM HOLE AT 629' FNL & 460' FEL, SEC. 17.
 KENNEDY 5 TO BE AT 793' FNL, 342' FEL.
 BOTTOM HOLE AT 550' FNL & 460' FWL.
 KENNEDY 6 TO BE AT 821' FNL, 343' FEL.
 BOTTOM HOLE AT 959' FNL & 460' FEL, SEC. 17.
 KENNEDY 7 TO BE AT 849' FNL, 343' FEL.
 BOTTOM HOLE AT 880' FNL & 460' FWL.
 KENNEDY 8 TO BE AT 877' FNL, 343' FEL.
 BOTTOM HOLE AT 1289' FNL & 460' FEL, SEC. 17.
 KENNEDY 9 TO BE AT 905' FNL, 343' FEL.
 BOTTOM HOLE AT 1210' FNL & 460' FWL.
 KENNEDY 10 TO BE AT 933' FNL, 344' FEL.
 BOTTOM HOLE AT 1619' FNL & 460' FEL, SEC. 17.

KENNEDY 11 TO BE AT 961' FNL, 344' FEL.
 BOTTOM HOLE AT 1540' FNL & 460' FWL.
 KENNEDY 12 TO BE AT 989' FNL, 344' FEL.
 BOTTOM HOLE AT 1949' FNL & 460' FEL, SEC. 17.
 KENNEDY 13 TO BE AT 1017' FNL, 344' FEL.
 BOTTOM HOLE AT 1870' FNL & 460' FWL.
 KENNEDY 14 TO BE AT 1045' FNL, 344' FEL.
 BOTTOM HOLE AT 2279' FNL & 460' FEL, SEC. 17.
 KENNEDY 15 TO BE AT 1073' FNL, 345' FEL.
 BOTTOM HOLE AT 2200' FNL & 460' FWL.
 KENNEDY 16 TO BE AT 1101' FNL, 345' FEL.
 BOTTOM HOLE AT 2609' FNL & 460' FEL, SEC. 17.
 KENNEDY 17 TO BE AT 1129' FNL, 345' FEL.
 BOTTOM HOLE AT 2530' FNL & 460' FWL.

PREPARED BY:



EXTRACTION OIL & GAS

FIELD DATE: 06-26-14	PAD NAME: KENNEDY 18-D
DRAWING DATE: 08-14-14	SURFACE LOCATION: NE 1/4, SEC. 18, T7N, R66W, 6TH P.M.
BY: SMF	WELD COUNTY, COLORADO

