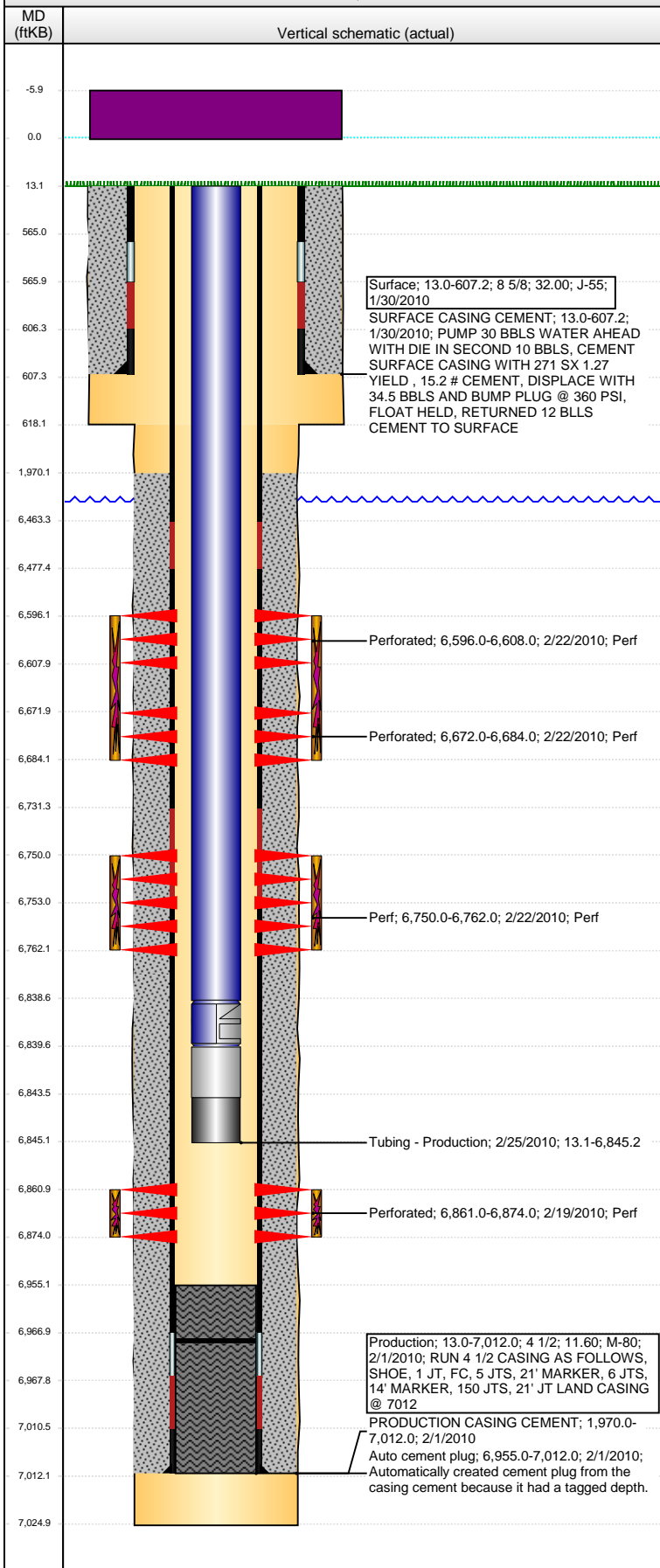


Well Name: ZANE ALTER C09-21

VERTICAL - ORIGINAL HOLE, 8/26/2014 10:16:35 AM



Well Header

API 05-123-30800	Business Unit DJ BASIN	District 15	Well Config VERTICAL
Original KB Elevation (ft) 4,708.00	KB - GL / MSL (ftKB) 13.00	Spud Date 1/29/2010	P & A Date

Comment

318Ae LOCATION!

Directions To Well

WCR 46 & 55, NORTH 0.5 MILE, WEST 0.5 MILES, SOUTH INTO

Congressional Location

Quarter 1	Quarter 2	Quarter 3 NE	Quarter 4 SW	Section 9	Township 4 N	Twnshp N...	Range 64	Rng E/W Dir W
-----------	-----------	-----------------	-----------------	--------------	-----------------	-------------	-------------	------------------

Bottom Hole Location

North-South Distance (ft)	From N or S Line	East-West Distance (ft)	From E or W Line
---------------------------	------------------	-------------------------	------------------

Plug Back Total Depths

Date	Depth (ftKB)	Method	Com
2/1/2010	6,966.0	CASING TALLY	
2/19/2010	6,955.0	CASED HOLE LOG	
2/25/2010	6,967.0	TAG	C/O TO WITH CONE BIT, THEN PUMPED OFF BIT...

Wellbore Sections

Section Des	Size (in)	Act Top, MD (ftKB)	Act Btm, MD (ftKB)
SURFACE	12 1/4	13.0	618.0
PRODUCTION	7 7/8	618.0	7,025.0

Zone Statuses

Zone Name	Status Date	Status	Job
NIOBRARA	2/26/2010	PR	DRILLING/COMPLETION - ORIGINAL, 1/29/2010 01:00
CODELL	2/26/2010	PR	DRILLING/COMPLETION - ORIGINAL, 1/29/2010 01:00

Casing Strings

Surface, 607.2ftKB

Casing Description Surface	Run Date 1/30/2010	OD (in) 8 5/8	Wt/Len (l... 32.00	Grade J-55	Top, MD (ft... 13.0	MD (ftKB) 607.2
-------------------------------	-----------------------	------------------	-----------------------	---------------	------------------------	--------------------

Production, 7,012.0ftKB

Casing Description Production	Run Date 2/1/2010	OD (in) 4 1/2	Wt/Len (l... 11.60	Grade M-80	Top, MD (ft... 13.0	MD (ftKB) 7,012.0
----------------------------------	----------------------	------------------	-----------------------	---------------	------------------------	----------------------

Cement

Description	Top Depth (ftKB)	Bottom Depth (ftKB)
SURFACE CASING CEMENT	13.0	607.2
PRODUCTION CASING CEMENT	1,970.0	7,012.0

Tubing Components

Item Des	OD (in)	Wt (lb/ft)	Grade	Jts	Len (ft)	Btm (ftKB)	Btm (TVD) (ftKB)
Tubing	2 3/8	4.70	J-55	221	6,825.48	6,838.6	
Profile Nipple	2 3/8	4.70	J-55	1	1.00	6,839.6	6,838.7
Tubing Pup Joint	2 3/8	4.70	N-80	1	4.00	6,843.6	6,842.7
Pump Off Bit Sub	2 3/8	4.70	J-55	1	1.63	6,845.2	6,844.3

Perforation Data

Zone	Bnch/St g	Entered Shot Total	Top (ftKB)	Btm (ftKB)	Date
NIOBRARA, ORIGINAL HOLE	A	24	6,596.00	6,608.00	2/22/2010
NIOBRARA, ORIGINAL HOLE	B	24	6,672.00	6,684.00	2/22/2010
NIOBRARA, ORIGINAL HOLE	C	24	6,750.00	6,762.00	2/22/2010
CODELL, ORIGINAL HOLE		52	6,861.00	6,874.00	2/19/2010

Stimulations & Treatments

Date 2/22/2010	Zone CODELL, ORIGINAL HOLE	Primary Job Type DRILLING/COMPLETION - ORIGINAL
Technical Result Success	Tech Result Details According to Plan	Tech Result Note

Comment

(CODELL): PRE-JOB 5 MIN PRESSURE 1182 PSI. INCREASED GET TO 34LB (30 CPS) AND INCREASED RATE TO 30 BPM. HAD PROBLEMS WITH FROZEN QC LOOP TILL 3 PSA STAGE. HAD SOME SMALL THROTTLE ISSUES WITH A FRAC PUMP DURING 4 PSA STAGE.

Date 2/22/2010	Zone NIOBRARA, ORIGINAL HOLE	Primary Job Type DRILLING/COMPLETION - ORIGINAL
Technical Result Success	Tech Result Details According to Plan	Tech Result Note

Comment

(NIOBRARA C): JOB WENT WELL WITH NO ISSUES TO REPORT.

Well Name: ZANE ALTER C09-21

VERTICAL - ORIGINAL HOLE, 8/26/2014 10:16:37 AM

Stimulations & Treatments

Date	Zone	Primary Job Type
2/22/2010	NIOBRARA, ORIGINAL HOLE	DRILLING/COMPLETION - ORIGINAL
Technical Result	Tech Result Details	Tech Result Note
Success	According to Plan	
Comment (NIOBRARA AB): JOB WENT WELL WITH NO ISSUES TO REPORT.		

Other In Hole

Run Date	Des	OD (in)	Top (ftKB)	Btm (ftKB)

Logs

Date	Type	Top, MD (ftKB)	Btm, MD (ftKB)
2/1/2010	SPECTRAL DENSITY/Pe/DSN NEUTRON/SP/ARRAY COMPENSATED TRUE RESISTIVITY/6 ARM CALIPER	608.0	7,015.0
2/1/2010	SPECTRAL GAMMA RAY	6,425.0	6,975.0
2/12/2010	CBL/CCL/GR/VDL	1,300.0	6,955.0

