

**LEGEND:**

● PROPOSED LOCATION



**ConocoPhillips Company**

**BOX ELDER #3-65 13-14 4H  
SECTION 14, T3S, R65W, 6th P.M.  
560' FSL 400' FWL**

DRAWN BY: J.L.G.

DATE DRAWN: 06-18-14

SCALE: 1:100,000

REV: 07-14-14 J.C.

**ACCESS ROAD MAP**

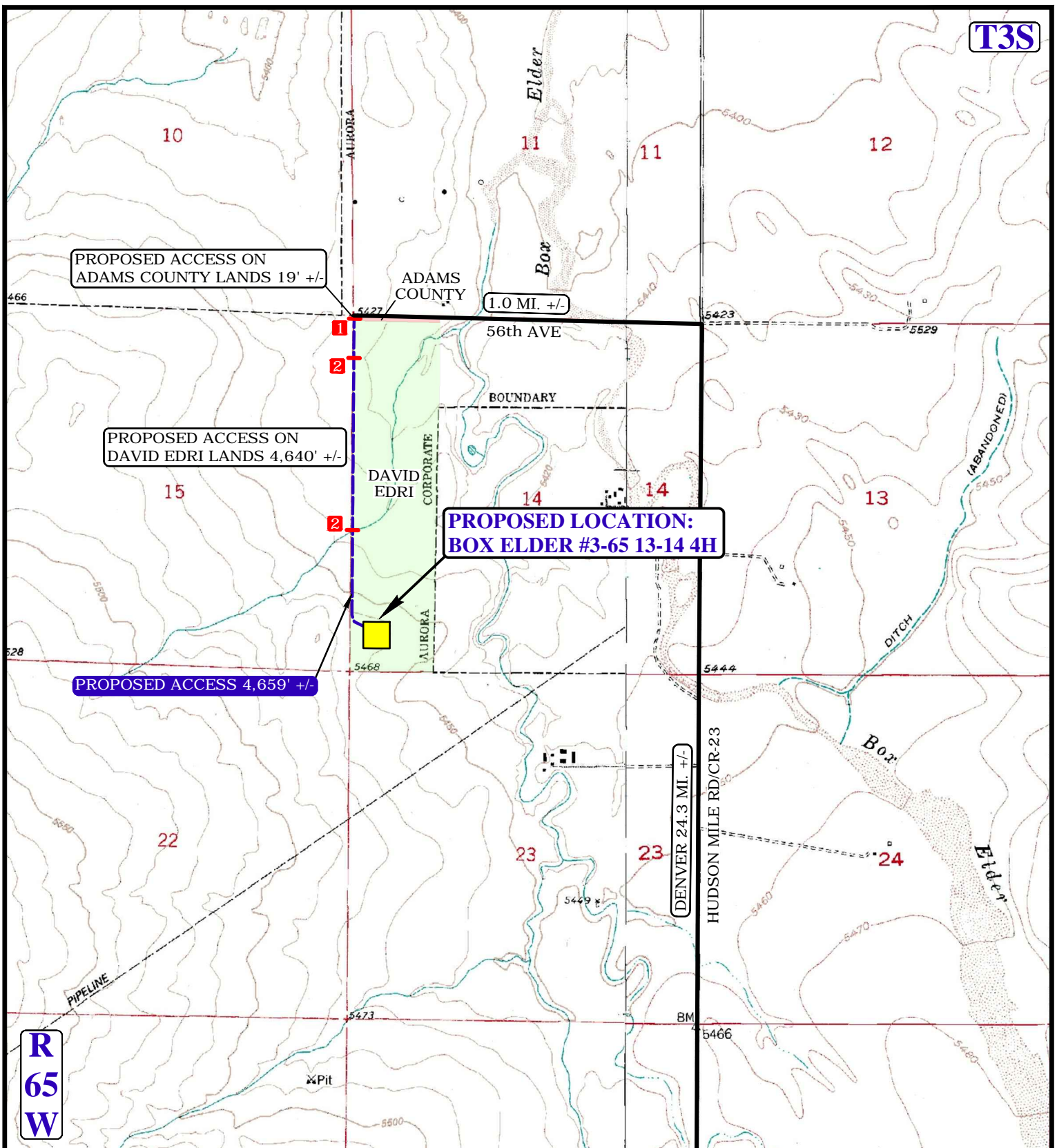
**TOPO A**



**UELS, LLC**

Corporate Office \* 85 South 200 East  
Vernal, UT 84078 \* (435) 789-1017





NOTE: PARCEL DATA SHOWN HAS BEEN OBTAINED FROM VARIOUS SOURCES AND SHOULD BE USED FOR MAPPING, GRAPHIC AND PLANNING PURPOSES ONLY. NO WARRANTY IS MADE BY UINAH ENGINEERING AND LAND SURVEYING (UELS) FOR ACCURACY OF THE PARCEL DATA.

#### LEGEND:

- EXISTING ROAD
- PROPOSED ROAD
- 1 18" CMP REQUIRED
- 2 48" CMP REQUIRED



#### ConocoPhillips Company

**BOX ELDER #3-65 13-14 4H**  
**SECTION 14, T3S, R65W, 6th P.M.**  
**560' FSL 400' FWL**

DRAWN BY: J.L.G.

DATE DRAWN: 06-18-14

SCALE: 1"=2000'

REV: 07-14-14 J.C.

**ACCESS ROAD MAP**

**TOPO B**



**UELS, LLC**  
 Corporate Office \* 85 South 200 East  
 Vernal, UT 84078 \* (435) 789-1017