

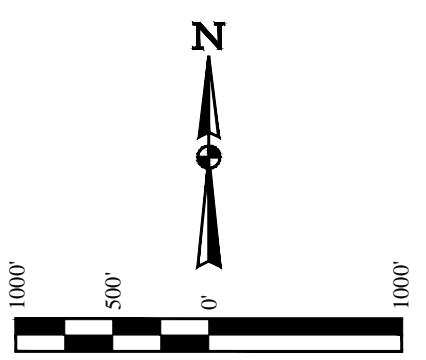
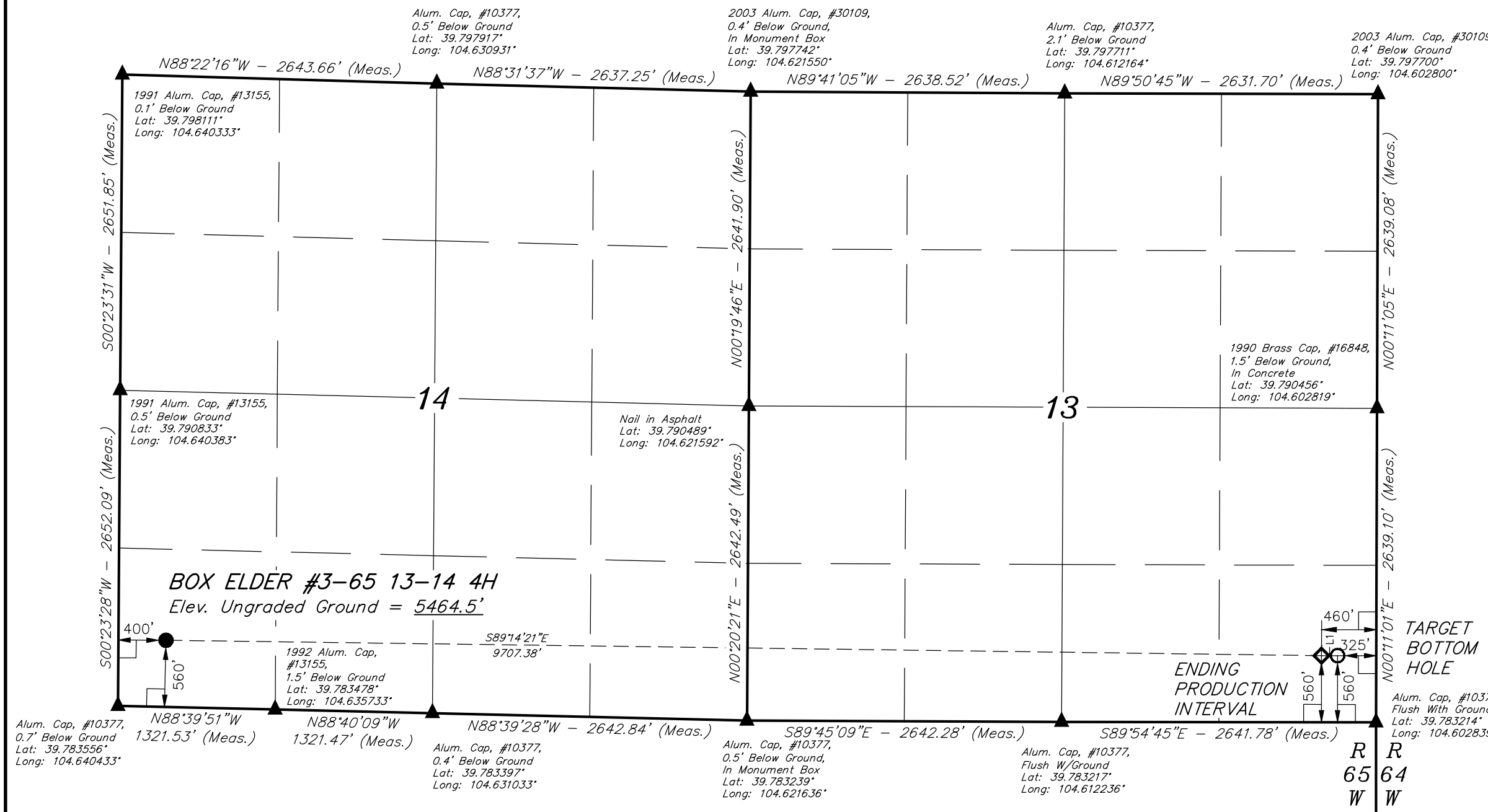
T3S, R65W, 6th P.M.

ConocoPhillips Company

BOX ELDER #3-65 13-14 4H
SW 1/4 SW 1/4, SECTION 14, T3S, R65W, 6th P.M.
ADAMS COUNTY, COLORADO

BASIS OF BEARINGS
BASIS OF BEARINGS IS A G.P.S. OBSERVATION
BASIS OF ELEVATION

BENCHMARK 374 LOCATED ON THE SECTION LINE BETWEEN SECTIONS 12 & 13, T5S, R64W, 6th. P.M., TAKEN FROM 1988 PUBLISHED DATUM BY THE UNITED STATES DEPARTMENT OF THE INTERIOR, GEOLOGICAL SURVEY AS BEING 6054.61 FEET.



LINE TABLE		
LINE	DIRECTION	LENGTH
L1	S89°54'45"E	135.00'

CERTIFICATE OF REGISTRATION

THIS IS TO CERTIFY THAT THE ABOVE PLAT WAS PREPARED FROM FIELD NOTES OF ACTUAL SURVEYS MADE BY ME OR UNDER MY SUPERVISION AND THAT THE SAME ARE TRUE AND CORRECT TO THE BEST OF MY KNOWLEDGE AND BELIEF.

Greg Weimer
REGISTERED LAND SURVEYOR
REGISTRATION NO. 28285
STATE OF COLORADO

- LEGEND:**
- = 90° SYMBOL
 - = PROPOSED WELLHEAD.
 - = TARGET BOTTOM HOLE.
 - ▲ = SECTION CORNERS LOCATED.
 - ◊ = PRODUCTION INTERVAL.

NAD 83 (TARGET BOTTOM HOLE)	NAD 83 (ENDING PRODUCTION INTERVAL)	NAD 83 (SURFACE LOCATION)
LATITUDE = 39°47'05.10" (39.784750)	LATITUDE = 39°47'05.10" (39.784750)	LATITUDE = 39°47'06.25" (39.785069)
LONGITUDE = 104°36'14.37" (104.603992)	LONGITUDE = 104°36'16.10" (104.604472)	LONGITUDE = 104°38'20.40" (104.639000)
NAD 27 (TARGET BOTTOM HOLE)	NAD 27 (ENDING PRODUCTION INTERVAL)	NAD 27 (SURFACE LOCATION)
LATITUDE = 39°47'05.15" (39.784764)	LATITUDE = 39°47'05.15" (39.784764)	LATITUDE = 39°47'06.30" (39.785083)
LONGITUDE = 104°36'12.49" (104.603469)	LONGITUDE = 104°36'14.22" (104.603950)	LONGITUDE = 104°38'18.52" (104.638478)
STATE PLANE NAD 83	STATE PLANE NAD 83	STATE PLANE NAD 83
N: 1165709.99 E: 3251808.10	N: 1165708.67 E: 3251673.15	N: 1165728.46 E: 3241968.63
STATE PLANE NAD 27	STATE PLANE NAD 27	STATE PLANE NAD 27
N: 165713.47 E: 2251961.17	N: 165712.16 E: 2251826.22	N: 165731.82 E: 2242121.81

PDOP = 2.7

UINTAH
ENGINEERING & LAND SURVEYING

UELS, LLC
Corporate Office * 85 South 200 East
Vernal, UT 84078 * (435) 789-1017

SURVEYED BY: GREG WEIMER, C.J.	DATE: 05-14-14
DRAWN BY: K.B.	DATE DRAWN: 06-02-14
SCALE: 1" = 1000'	REVISED: 00-00-00

WELL LOCATION PLAT

T3S, R65W, 6th P.M.

ConocoPhillips Company

BOX ELDER #3-65 13-14 4H
SW 1/4 SW 1/4, SECTION 14, T3S, R65W, 6th P.M.
ADAMS COUNTY, COLORADO

BASIS OF BEARINGS
 BASIS OF BEARINGS IS A G.P.S. OBSERVATION
BASIS OF ELEVATION

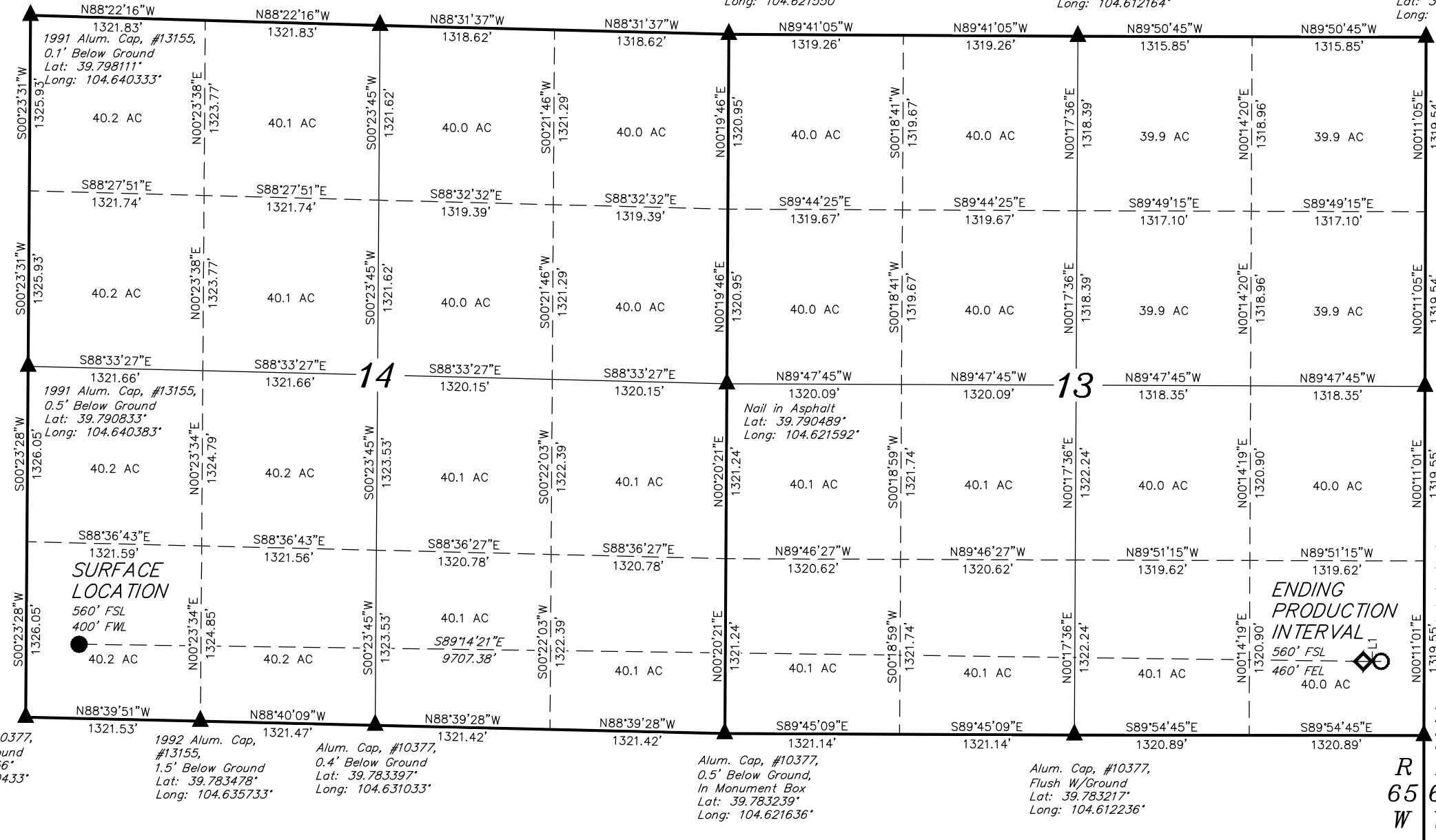
BENCHMARK 374 LOCATED ON THE SECTION LINE BETWEEN SECTIONS 12 & 13, T5S, R64W, 6th. P.M., TAKEN FROM 1988 PUBLISHED DATUM BY THE UNITED STATES DEPARTMENT OF THE INTERIOR, GEOLOGICAL SURVEY AS BEING 6054.61 FEET.

Alum. Cap, #10377,
 0.5' Below Ground
 Lat: 39.797917°
 Long: 104.630931°

2003 Alum. Cap, #30109,
 0.4' Below Ground,
 In Monument Box
 Lat: 39.797742°
 Long: 104.621550°

Alum. Cap, #10377,
 2.1' Below Ground
 Lat: 39.797711°
 Long: 104.612164°

2003 Alum. Cap, #30109
 0.4' Below Ground
 Lat: 39.797700°
 Long: 104.602800°



LINE TABLE		
LINE	DIRECTION	LENGTH
L1	S89°54'45"E	135.00'

TARGET BOTTOM HOLE
 560' FSL
 325' FEL

ENDING PRODUCTION INTERVAL
 560' FSL
 460' FEL
 40.0 AC

CERTIFICATE OF REGISTRATION
 THIS IS TO CERTIFY THAT THE ABOVE DEED WAS PREPARED FROM FIELD NOTES OF ACTUAL SURVEYS MADE BY ME OR UNDER MY SUPERVISION AND THAT THE SAME ARE TRUE AND CORRECT TO THE BEST OF MY KNOWLEDGE AND BELIEF.
 GREG WEIMER
 REGISTERED LAND SURVEYOR
 REGISTRATION NO. 28285
 STATE OF COLORADO
 06-10-14

PDOP = 2.7

- LEGEND:**
- = 90° SYMBOL
 - = PROPOSED WELLHEAD.
 - = TARGET BOTTOM HOLE.
 - ▲ = SECTION CORNERS LOCATED.
 - ◇ = PRODUCTION INTERVAL.

NAD 83 (TARGET BOTTOM HOLE)	NAD 83 (ENDING PRODUCTION INTERVAL)	NAD 83 (SURFACE LOCATION)
LATITUDE = 39°47'05.10" (39.784750)	LATITUDE = 39°47'05.10" (39.784750)	LATITUDE = 39°47'06.25" (39.785069)
LONGITUDE = 104°36'14.37" (104.603992)	LONGITUDE = 104°36'16.10" (104.604472)	LONGITUDE = 104°38'20.40" (104.639000)
NAD 27 (TARGET BOTTOM HOLE)	NAD 27 (ENDING PRODUCTION INTERVAL)	NAD 27 (SURFACE LOCATION)
LATITUDE = 39°47'05.15" (39.784764)	LATITUDE = 39°47'05.15" (39.784764)	LATITUDE = 39°47'06.30" (39.785083)
LONGITUDE = 104°36'12.49" (104.603469)	LONGITUDE = 104°36'14.22" (104.603950)	LONGITUDE = 104°38'18.52" (104.638478)
STATE PLANE NAD 83	STATE PLANE NAD 83	STATE PLANE NAD 83
N: 1165709.99 E: 3251808.10	N: 1165708.67 E: 3251673.15	N: 1165728.46 E: 3241968.63
STATE PLANE NAD 27	STATE PLANE NAD 27	STATE PLANE NAD 27
N: 165713.47 E: 2251961.17	N: 165712.16 E: 2251826.22	N: 165731.82 E: 2242121.81

UINTAH
 ENGINEERING & LAND SURVEYING

UELS, LLC
 Corporate Office * 85 South 200 East
 Vernal, UT 84078 * (435) 789-1017

SURVEYED BY: GREG WEIMER, C.J. DATE: 05-14-14
 DRAWN BY: K.B. DATE DRAWN: 06-02-14
 SCALE: 1" = 1000' REVISED: 00-00-00

SECTION BREAKDOWN