

# **LEGEND:**

 **PROPOSED LOCATION**



**ConocoPhillips Company**

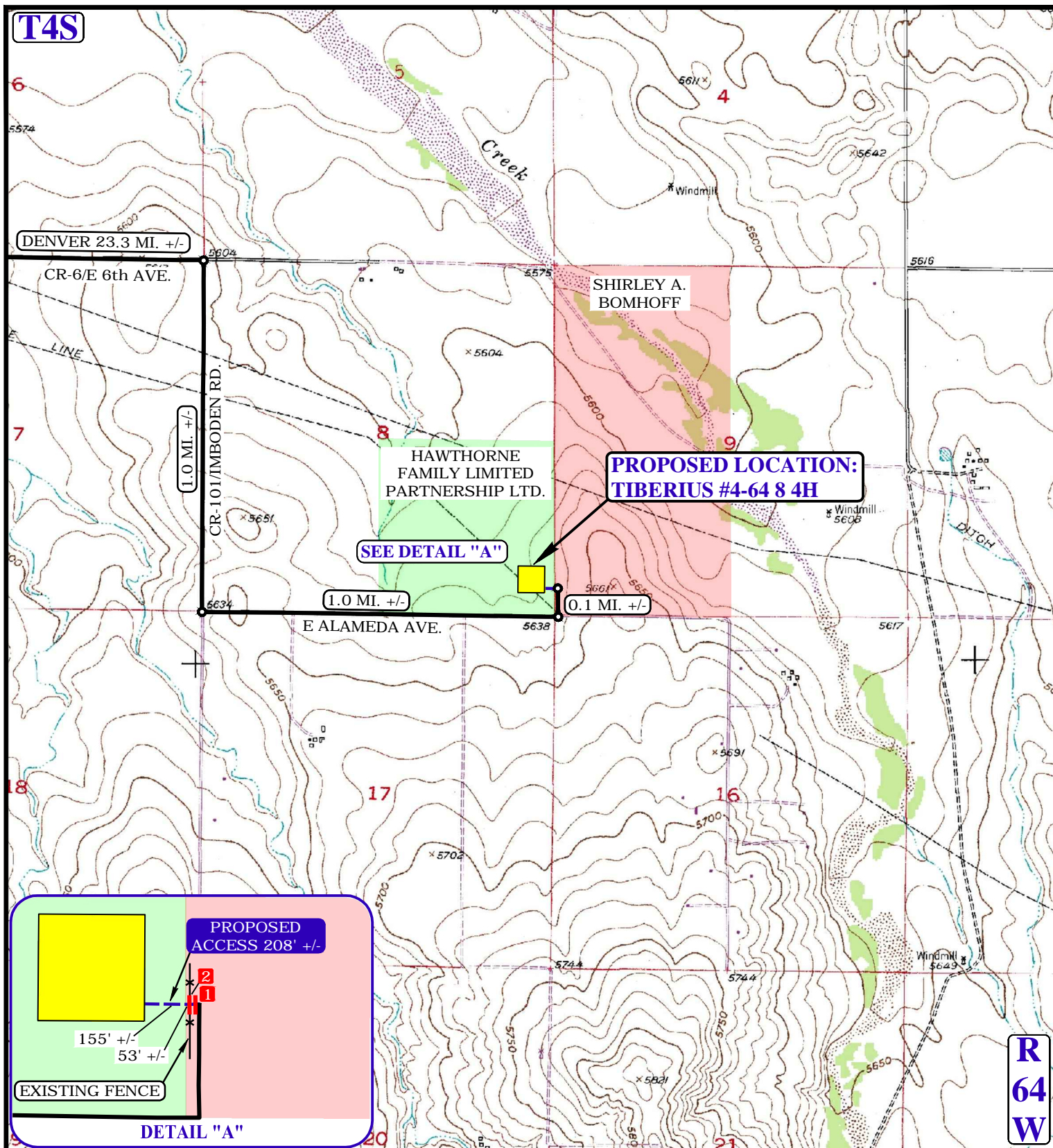
**TIBERIUS #4-64 8 4H**  
**SECTION 8, T4S, R64W, 6th P.M.**  
**560' FSL 355' FEL**



**UELS, LLC.**  
 Corporate Office \* 85 South 200 East  
 Vernal, UT 84078 \* (435) 789-1017

SCALE: 1:100,000	DRAWN BY: J.L.G.	DATE: 05-14-14
<b>ACCESS ROAD MAP</b>		<b>TOPO A</b>





NOTE: PARCEL DATA SHOWN HAS BEEN OBTAINED FROM VARIOUS SOURCES AND SHOULD BE USED FOR MAPPING, GRAPHIC AND PLANNING PURPOSES ONLY. NO WARRANTY IS MADE BY UINTAH ENGINEERING AND LAND SURVEYING (UELS) FOR ACCURACY OF THE PARCEL DATA.

#### LEGEND:

- EXISTING ROAD
- - - PROPOSED ROAD
- x - x - EXISTING FENCE
- 1 18" CMP REQUIRED
- 2 CATTLE GUARD REQUIRED



**UELS, LLC.**  
Corporate Office \* 85 South 200 East  
Vernal, UT 84078 \* (435) 789-1017



**ConocoPhillips Company**

**TIBERIUS #4-64 8 4H**  
**SECTION 8, T4S, R64W, 6th P.M.**  
**560' FSL 355' FEL**

SCALE: 1" = 2000'

DRAWN BY: J.L.G.

DATE: 05-14-14

**ACCESS ROAD MAP**

**TOPO B**