



Scale: 5" / 100'
Measured Depth Log

Well Name Barefoot 31N-25HZ

Location SENE 25.3N 68W 6 PM

State COLORADO

Country USA

API Number 05-123-3922900

Region DJ BASIN

Spud Date 5/10/2014

Surface Coordinates 2033' FNL 663' FEL

Bottom Hole Coordinates 1920' FNL 50' FWL

County WELD

Rig Number XTREME 8

AFE # 2092719

Field WATTENBERG

Drilling Completed 6/28/2014

Ground Elevation 4887'

K.B. Elevation 4904'

Logged Interval 7050' To 12757'

Total Depth 12757'

Formation NIOBRARA C CHALK

Type of Drilling Fluid FW LSND

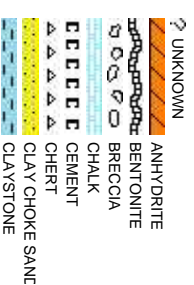
Company Anadarko

Address 1099 18TH, SU
DENVER, CO 8

Name RIKKI WITHER

Company COLUMBINE LOGGING

Address 2385 S. LIPAN
DENVER, CO 8



Operator

ITE 1800
0202

Geologist

SPOON, KYLE KNIGHT, TIM COUSINEAU

OGGING

ST
0223

Rock Types

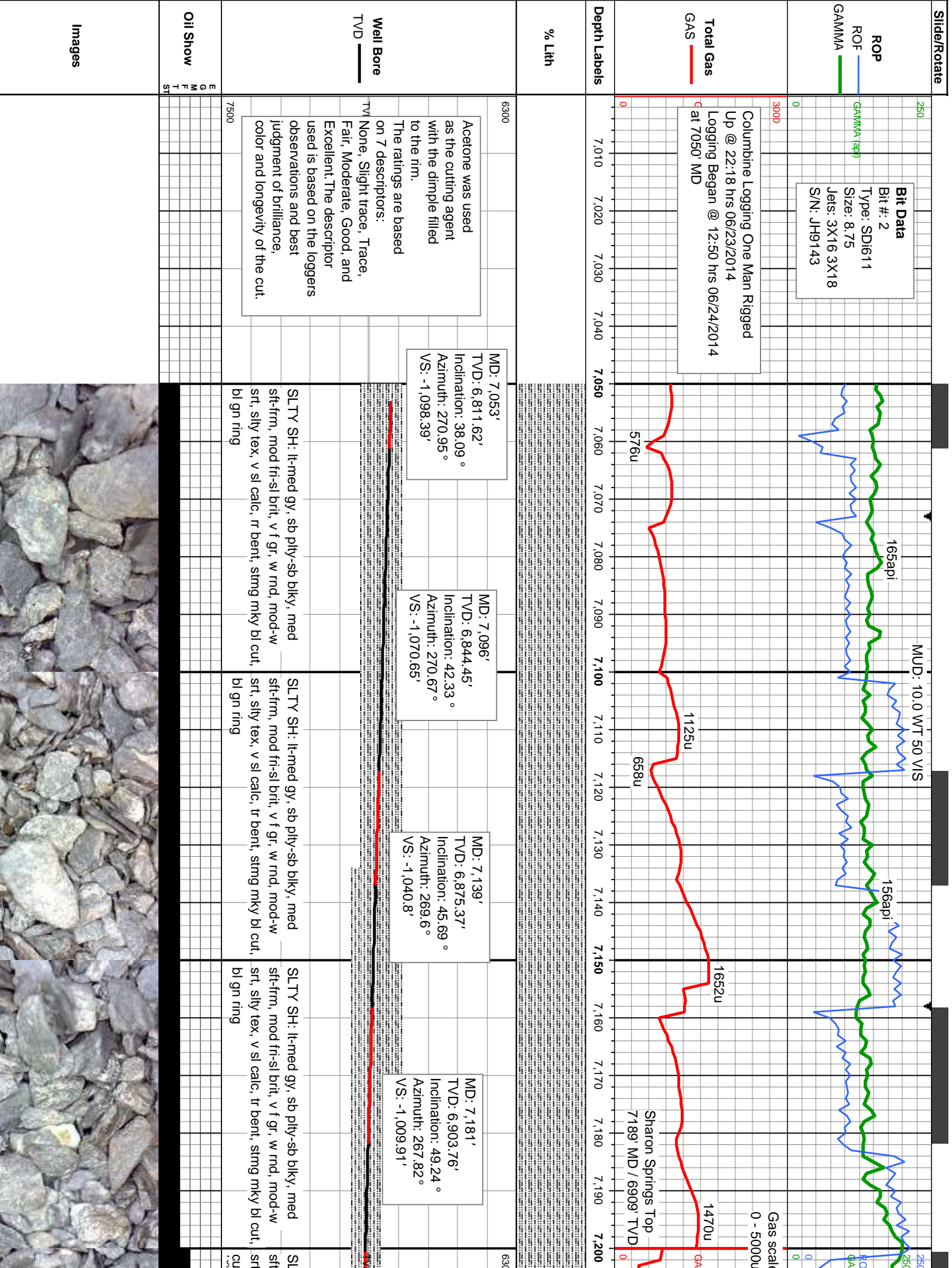
CONGLOMERATE	MARLSTONE	SHALY SANDSTONE
DOLOMITE	METAMORPHIC	SHALY SILTSTONE
DOLOMITIC LIMESTONE	NO SAMPLE	SILTSTONE
GRANITE	SALT	SILTSTONE
GYPSUM	SANDSTONE	TILL
IGNEOUS	SALT-PEPPER SAND	TUFF
SIDERITE or LIMONITE	SHALE	WELDED TUFF
LIMESTONE	SHALE COLORED	
	SHALE GRAY	

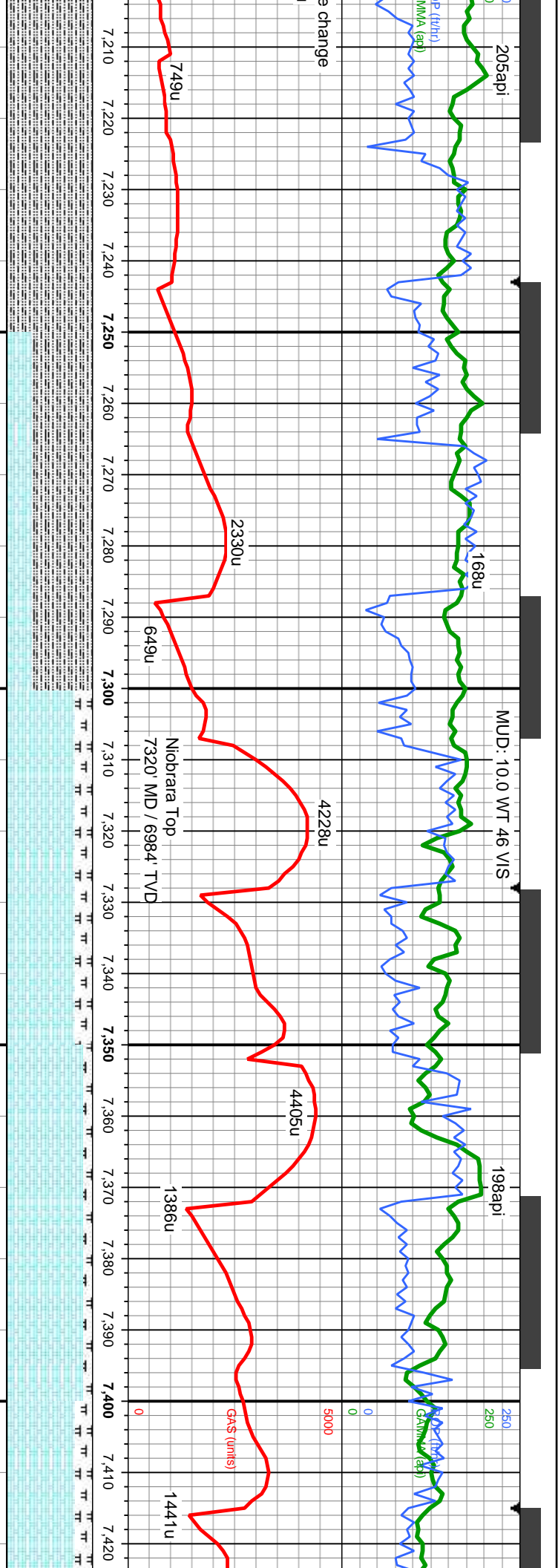
Accessories

Fossils	GASTROPOD	ARGILLITE GRAIN	HEAVY MINERAL	Stringer
INOCERAMUS	B BENTONITE	K KAOLIN	ANHYDRITE STRINGER	BENTONITE STRINGER
ALGAE	O OOLITE	M MARCASITE	PYRITE	COAL STRINGER
AMPHIPORA	O OSTRACOD	BRECCIA FRAGMENTS	MICACEOUS	DOLOMITE STRINGER
BELEMNITE	P PELECYPOD	CARBONACEOUS FLAKES	MINERAL CRYSTALS	GYPSUM STRINGER
BIOCLASTIC	P PELLET	CHERT	NODULES	LIMESTONE STRINGER
BRACHIOPOD	P PISOLITE	COAL - THIN BEDS	PHOSPHATE PELLETS	MARLSTONE (CALC) STRG
BRYOZOA	PLANT REMAINS	DOLOMITIC	PYRITE	MARLSTONE (DOL) STRG
CEPHALOPOD	PLANT SPORES	FELDSPAR	SALT CAST	SANDSTONE (DOL) STRG
CORAL	SCAPHOPOD	FERRUGINOUS PELLETT	SANDY	SHALE STRINGER
CRINOID	STROMATOPOROID	FERRUGINOUS	SILTY	SILTSTONE STRINGER
ECHINOID		GLAUCONITE	TUFFACEOUS	
FISH	Minerals	ANHYDRITIC		
FORAMINIFERA	ARGILLACEOUS	GYPSIFEROUS		
F FOSSIL				

Other Symbols

Oil Show	P PINPOINT	WIRELINE TESTED - LEFT	E EARTHY
V VUGGY	FAULT	WIRELINE TESTED - RT	F FINELY XLN
Engineering	FORMATION TOP	DRILL STEM TEST	G GRAINSTONE
D DEAD	GAS SHOW	MN DEPTH	L LITHOGRAPHIC
EVEN	OIL SHOW	MN DEPTH	M MICROXLN
Q QUESTIONABLE	BIT		
SPOTTED STAINING	CONNECTION (UP)	Rounding	M MUDSTONE
		A ANGULAR	P PACKSTONE
Porosity	CONNECTION (DOWN)	B SUBANG	W WACKESTONE
CONNECTION GAS	NORMAL FAULT	B SUBANG	
E EARTHY	OVERTURNED STRATA	B SUBANG	
F FENESTRAL	REVERSE FAULT	B SUBANG	
F FRACTURE	CASING	Textures	M MODERATE
INTERCRYSTALLINE	DOWN TIME GAS	SIDEWALL CORE (LEFT)	P POOR
INTERCRYSTALLINE	DOWN TIME GAS (LEFT)	SLIDE	W WELL
MOLDIC	CORE - LOST	SIDEWALL CORE (RIGHT)	
ORGANIC	CORE - RECOVERED	SURVEY	C CRYPTOXLN





MD: 7,224'
TVD: 6,930.87'
Inclination: 52.6 °
Azimuth: 267.55 °
VS: -976.64'

MD: 7,266'
TVD: 6,955.37'
Inclination: 56.02 °
Azimuth: 267.35 °
VS: -942.66'

MD: 7,310'
TVD: 6,978.95'
Inclination: 59.16 °
Azimuth: 266.66 °
VS: -905.67'

MD: 7,354'
TVD: 7,000.08'
Inclination: 63.42 °
Azimuth: 266.83 °
VS: -867.26'

MD: 7,397'
TVD: 7,017.97'
Inclination: 67.38 °
Azimuth: 267.2 °
VS: -828.34'

TY SH: lt-med gy, sb ply-sb blk, med
sft-frn, mod fri-sl brit, v f gr, w rmd, mod-w
sly tex, v sl calc, rr bent, fast sting mky bl
f gr, mod srt, wxy-rthy lstr, mot, v rr bent, fast
sting mky bl cut, spy bri bl ring

SLTY SH: lt-med gy, sb ply-sb blk, med
sft-frn, mod fri-sl brit, v f gr, w rmd, mod-w
srt, sly tex, v sl calc, CHK: lt-med gy, blk, sft,
f gr, mod srt, wxy-rthy lstr, mot, v rr bent, fast
sting mky bl cut, spy bri bl ring

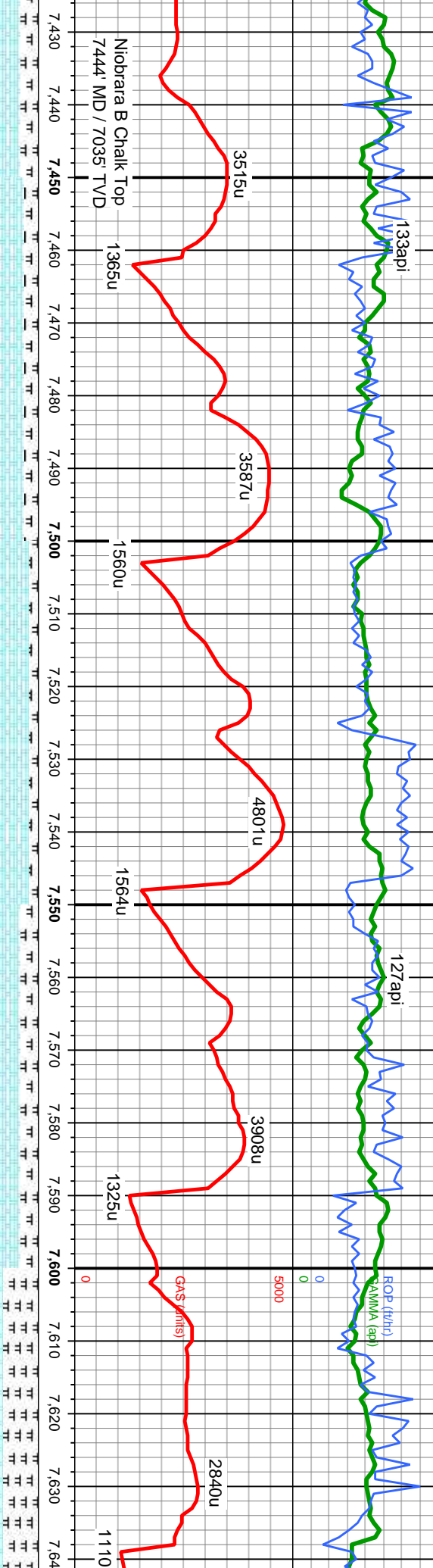
CHK: lt-med gy, blk, sft, f gr, mod srt,
wxy-rthy lstr, mot, MRLST: dk-med gy, sb
ply, med sft-frn, brit, gt, v f gr, w srt, sly tex,
lam, fast sting mky bl cut, spy bri bl ring

CHK: lt-med gy, blk, sft, f gr, mod srt,
wxy-rthy lstr, mot, MRLST: dk-med gy, sb
ply, med sft-frn, brit, gt, v f gr, w srt, sly tex,
lam, v rr bent, fast sting mky bl cut, spy bri
cut, spy bri bl ring



MUD: 10.0 WT 48 VIS

MUD: 10.10 WT 45 VIS



Niobrara B Chalk Top
7444' MD / 7035' TVD

MD: 7,441'
TVD: 7,033.85'
Inclination: 70.31 °
Azimuth: 268.54 °
VS: -787.43'

MD: 7,485'
TVD: 7,047.46'
Inclination: 73.65 °
Azimuth: 269.74 °
VS: -745.65'

MD: 7,529'
TVD: 7,058.44'
Inclination: 77.45 °
Azimuth: 270.65 °
VS: -703.08'

MD: 7,573'
TVD: 7,066.7'
Inclination: 80.91 °
Azimuth: 271.69 °
VS: -659.87'

MD: 7,633'
TVD: 7,073.72'
Inclination: 85.65 °
Azimuth: 270.9 °
VS: -600.31'

sft, f gr, mod srt,
MRLST: dk-med gy, sb
gt, vf gr, w srt, silty tex,
frags, fast string mky bl

CHK: lt-med gy, blk, sft, f gr, mod srt,
wxy-rthy lstr, mot; MRLST: dk-med gy, sb
ply, med sft-frm, brit, gt, vf gr, w srt, silty tex,
lam, tr cal strg, fast string mky bl cut, spty bri
bl ring

CHK: lt-med gy, blk, sft, f gr, mod srt,
wxy-rthy lstr, mot; MRLST: dk-med gy, sb ply,
med sft-frm, brit, gt, vf gr, w srt, silty tex, lam, vlist,
rr pyr, tr cal strg, fast string mky bl cut, spty bri
bl ring

CHK: med gy, blk, sft, f gr, mod srt, wxy-rthy
lstr, mot; MRLST: dk-med gy, sb ply, med
sft-frm, gt, vf gr, w srt, silty tex, lam, tr fos, fast
string mky bl cut, spty bri bl ring

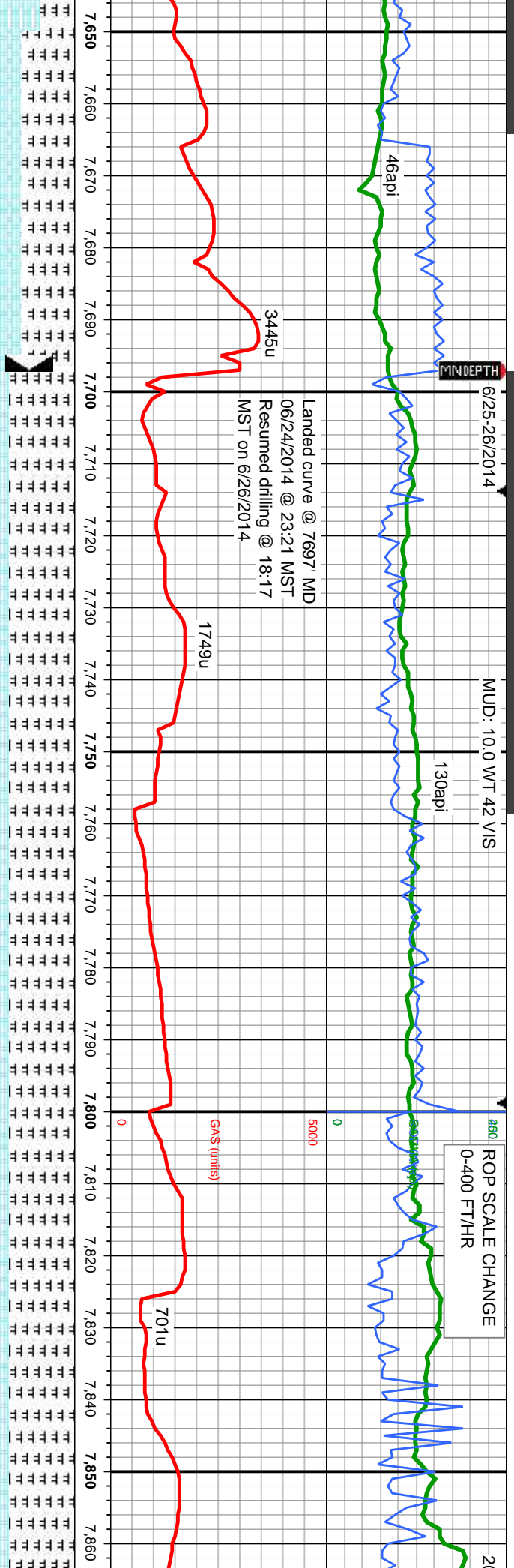
CHK: med gy, blk, sft, f gr, mod srt, wxy
lstr, mot; MRLST: dk-med gy, sb ply, me
sft-frm, gt, vf gr, w srt, silty tex, lam, com
frags, string mky bl cut, spty bri bl ring



6/25-26/2014

MUD: 10.0 WT 42 VIS

ROP SCALE CHANGE
0-400 FT/HR

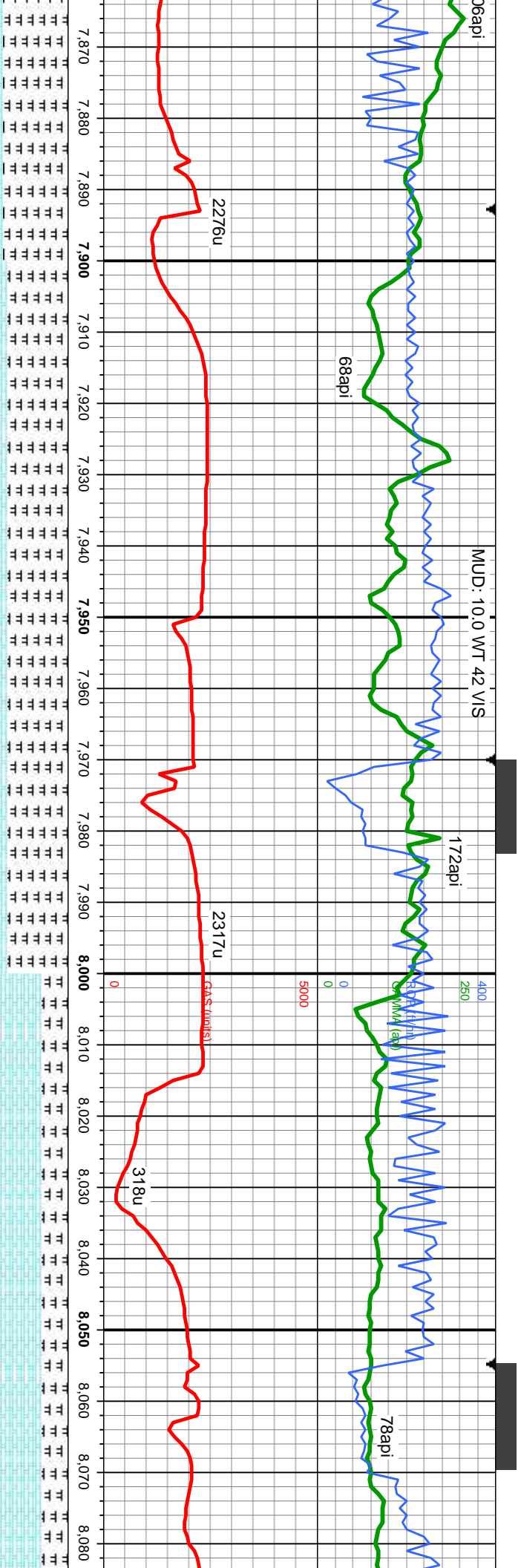


MD: 7,734'
TVD: 7,078.04'
Inclination: 89.44 °
Azimuth: 268.41 °
VS: -499.53'

MD: 7,822'
TVD: 7,079.06'
Inclination: 89.23 °
Azimuth: 269.54 °
VS: -411.68'

MR LST: dk-med gy, sb ply, med sft-fm, brit, gt, v f gr, w srt, silty tex, lam; CHK: med gy, blk, sft, f gr, mod srt, wxy-rthy lstr, mot, com fos frags, tr inoc, sting mky bl cut, spty bri bl ring	MR LST: dk-med gy, sb ply, med sft-fm, brit, gt, v f gr, w srt, silty tex, lam, mod calc; CHK: med gy, blk, sft, f gr, mod srt, wxy-rthy lstr, mot, com fos frags, v calc, tr inoc, fast sting mky bl cut, spty bri bl ring	7500
--	---	------





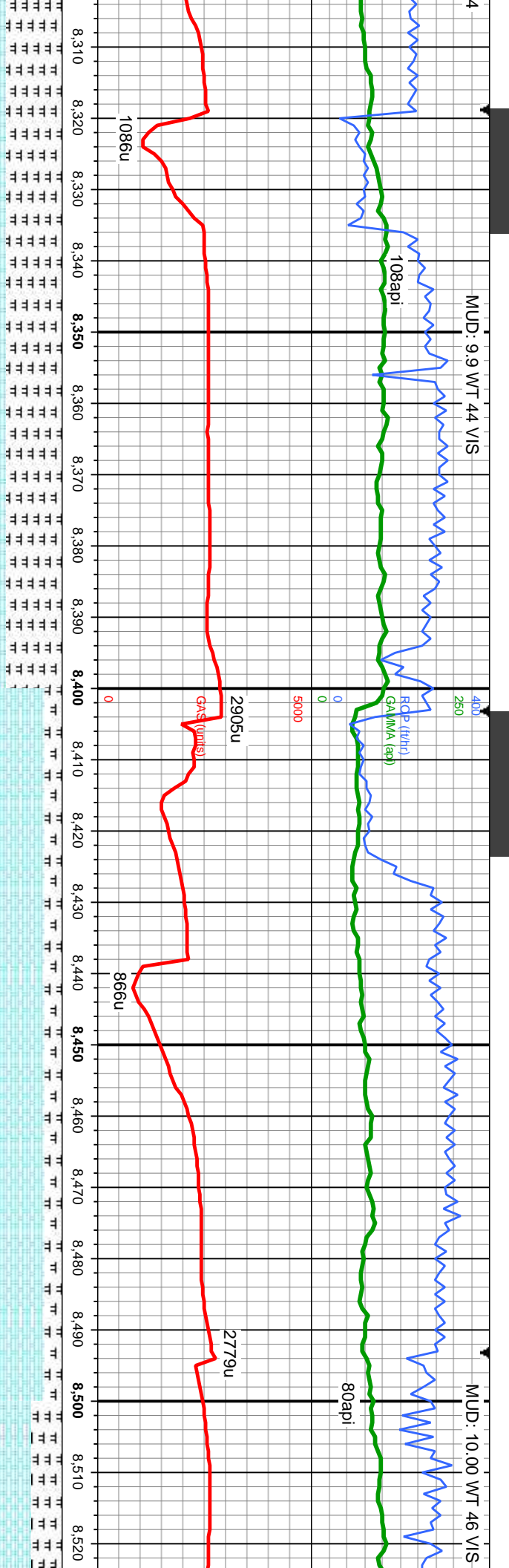
MD: 7,907'
TVD: 7,080.53'
Inclination: 88.79 °
Azimuth: 269.75 °
VS: -326.78'

MD: 7,992'
TVD: 7,082.99'
Inclination: 87.9 °
Azimuth: 269.96 °
VS: -241.89'

MD: 8,079'
TVD: 7,085.7
Inclination: 86
Azimuth: 269
VS: -155.01'

gy-gr, w srt, silty tex, lam, wxy-rthy lstr, mot, com fos	MR LST: dk-med gy, sb pily, med sft frm, brit, gt, vf gr, w srt, silty tex, lam, mod calc; CHK: med gy, blk, sft, f gr, mod srt, wxy-rthy lstr, mot, com fos frags, v calc, tr inoc, fast sling mky bl cut, bri bl ring	7500	MR LST: dk-med gy, sb pily, med sft frm, brit, gt, vf gr, w srt, silty tex, lam, mod calc; CHK: med gy, blk, sft, f gr, mod srt, wxy-rthy lstr, mot, com fos frags, v calc, tr inoc, fast sling mky bl cut, bri bl ring
---	---	------	---





MD: 8,341'
TVD: 7,089.01'
Inclination: 89.26°
Azimuth: 269°
VS: 106.65'

MD: 8,426'
TVD: 7,088.74'
Inclination: 91.1°
Azimuth: 269.53°
VS: 191.53'

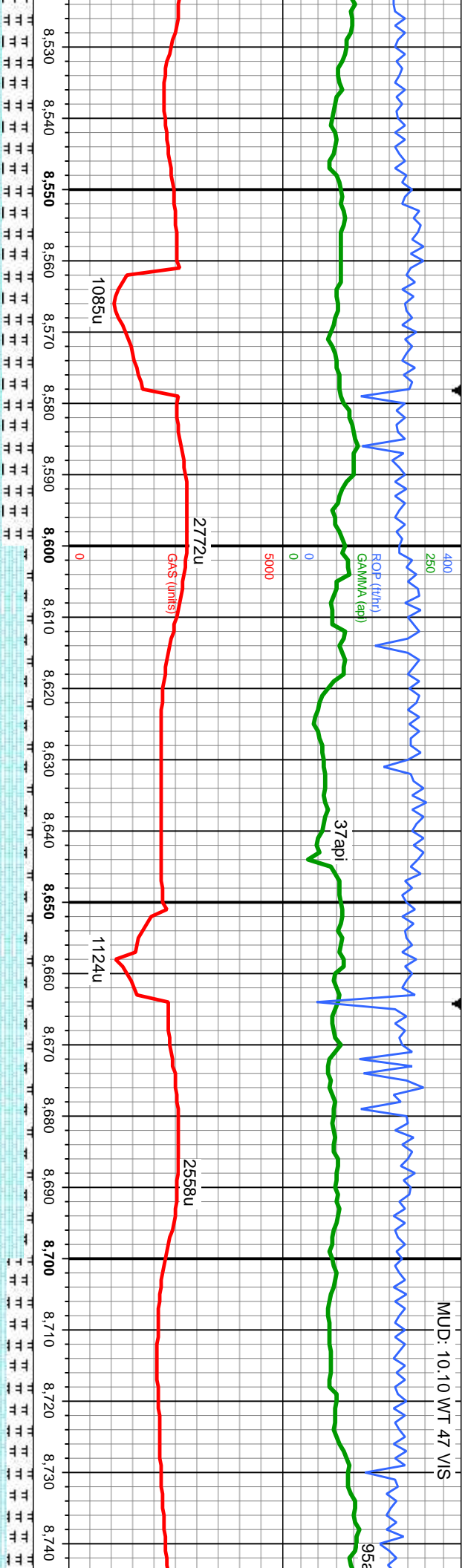
MD: 8,511'
TVD: 7,087.04'
Inclination: 91.2°
Azimuth: 270.13°
VS: 276.44'

MRLST: dk-med gy, sb pily, med sft-firm, brit, gt, vf gr, w srt, silty
tex, lam, mod calc; CHK: med gy, blkly, sft, f gr, mod srt, wxy-rthy
lstr, mot, com fos frags, v calc, tr inoc, stmg mky bl cut, bri bl ring

MRLST: dk-med gy, sb pily, med sft-firm, brit, gt, vf gr, w srt, silty tex,
lam, mod calc; CHK: tan-med gy, blkly, sft, f gr, mod srt, wxy-rthy lstr,
mot, com fos frags, v calc, tr inoc, fast stmg mky bl cut, bri bl ring

CHK:
MRLS
silty te





MD: 8,596'
TVD: 7,085.12'
Inclination: 91.38 °
Azimuth: 270.94 °
VS: 361.38'

MD: 8,681'
TVD: 7,083.26'
Inclination: 91.13 °
Azimuth: 271.21 °
VS: 446.34'

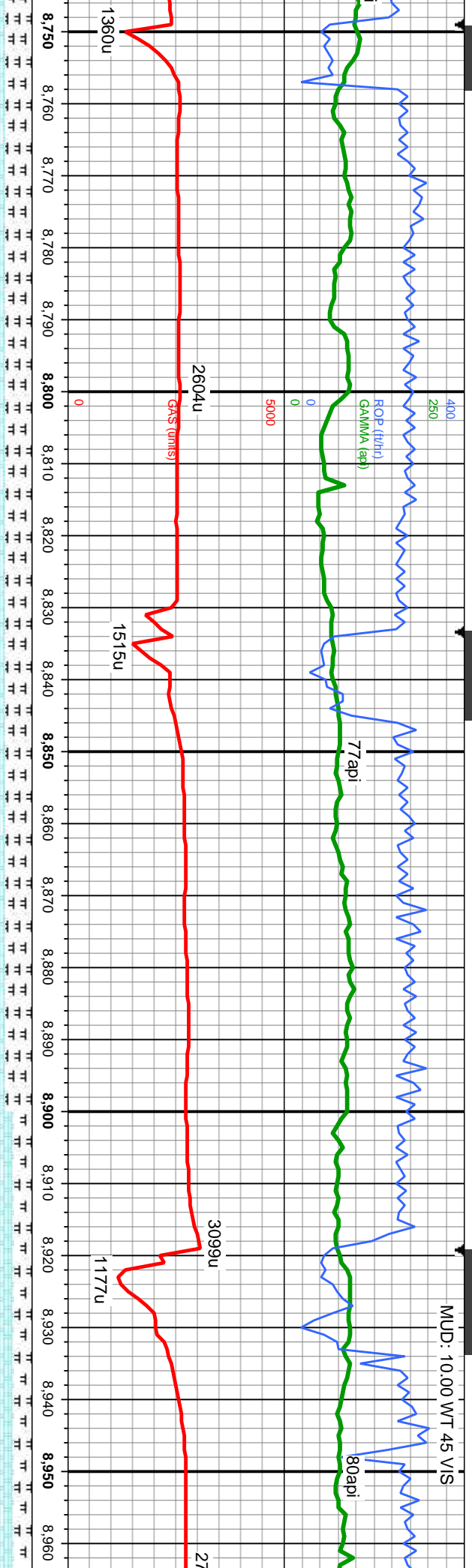
lt-med gy, blk, sft, f gr, mod srt, wxy-rthy lstr, mot;
dk-med gy, sb pily, med sft-frn, brit, gt, vf gr, w srt,
x, lam, mod calc, fast stmg mky bl cut, bri bl ring

CHK: lt-med gy, blk, sft, f gr, mod srt, wxy-rthy lstr;
MRLST: dk-med gy, sb pily, med sft-frn, brit, gt, vf gr, w
srt, sily tex, lam, fast stmg mky bl cut, spy bri bl ring

CHK: lt-med gy, blk, sft, f gr,
dk-med gy, sb pily, med sft-fr
rr fos frags, fast stmg mky bl



MUD: 10.00 WT 45 VIS



MD: 8,766'
TVD: 7,081.65'
Inclination: 91.04 °
Azimuth: 271.03 °
VS: 531.31'

MD: 8,851'
TVD: 7,080.45'
Inclination: 90.58 °
Azimuth: 270.82 °
VS: 616.28'

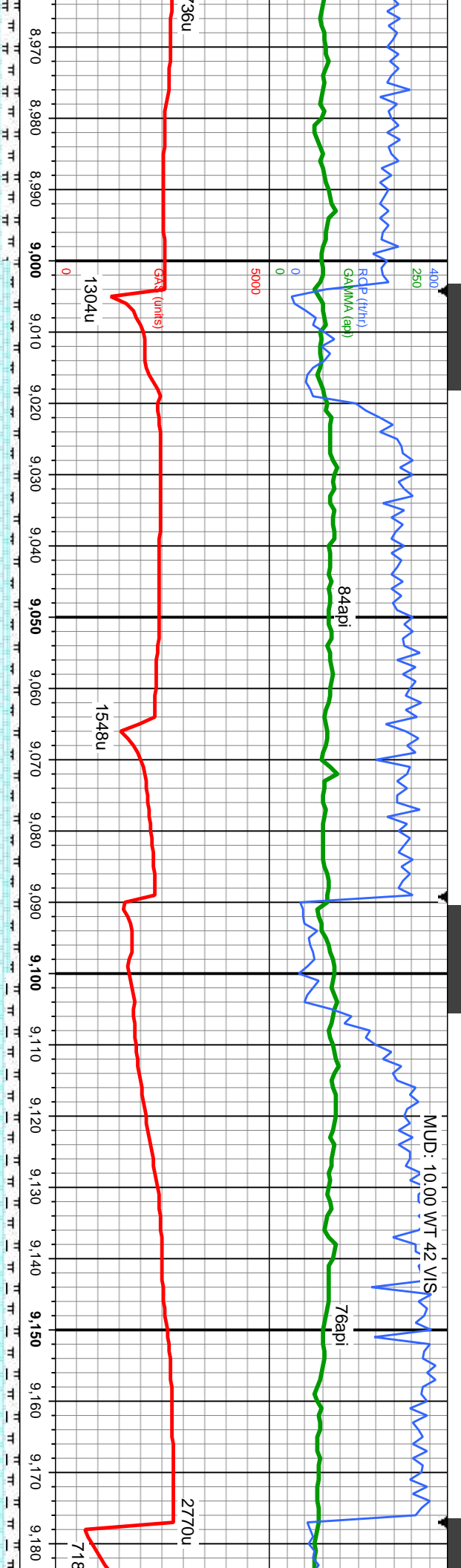
MD: 8,937'
TVD: 7,080.29'
Inclination: 89.63 °
Azimuth: 270.41 °
VS: 702.24'

mod srt, wxy-rthy lstr, MRLST:
m, brit, gt, vf gr, w srt, silty tex, lam,
cut, sply brit bl ring

CHK: lt-med gy, blk, sft, f gr, mod srt, wxy-rthy lstr, MRLST:
dk-med gy, sb ply, med sft-frm, brit, gt, vf gr, w srt, silty tex,
lam, fast string mky bl cut, brit bl ring

CHK: lt-med gy, blk, sft, f gr, mod srt, wxy-rthy lstr, MRLST:
dk-med gy, sb ply, med sft-frm, brit, gt, vf gr, w srt, silty tex, lam, tr fos frags, fast string mky bl cut

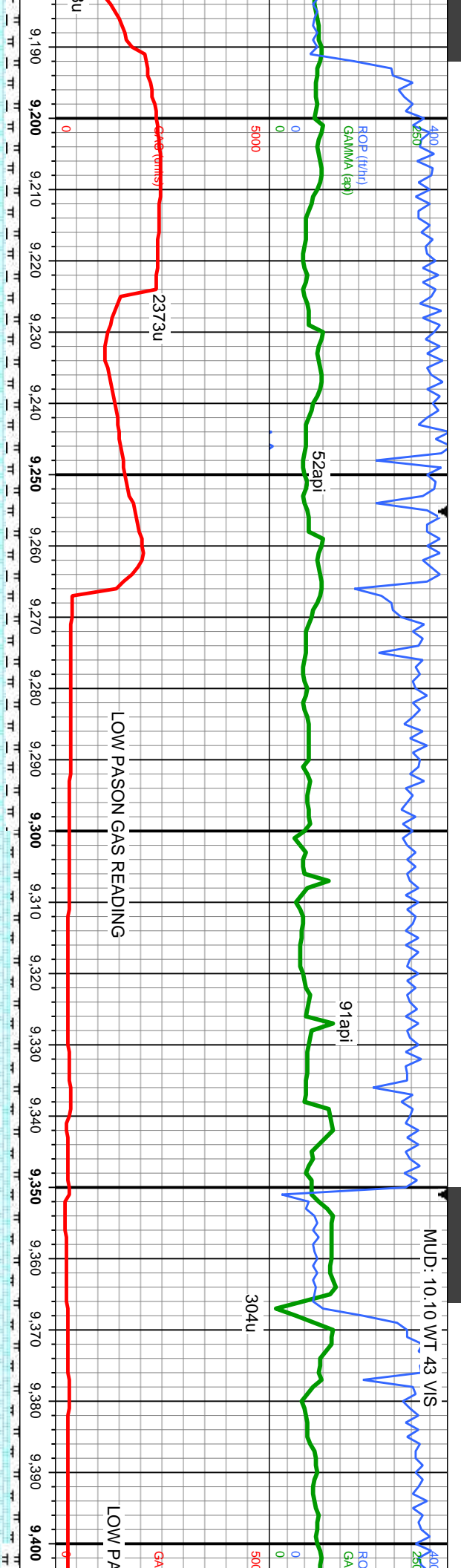




6300										<div>MD: 9,022' TVD: 7,081.28' Inclination: 89.04 ° Azimuth: 269.74 ° VS: 787.17'</div>											<div>MD: 9,109' TVD: 7,082.2' Inclination: 89.75 ° Azimuth: 269.47 ° VS: 874.08'</div>										
TVD (ft)																															

hy lstr, mot:		CHK: lt-med gy, blkly, sft, f gr, mod srt, wxy-rthy lstr, mot:
gt, vf gr, w srt,		MRLST: dk-med gy, sb pty, med sft-frm, brit, gt, vf gr, w srt,
bri bl ring	7500	sily tex, lam, r r fos frags, sting mky bl cut, bri bl ring





MD: 9,198'
TVD: 7,082.39'
Inclination: 90 °
Azimuth: 268.64 °
VS: 962.94'

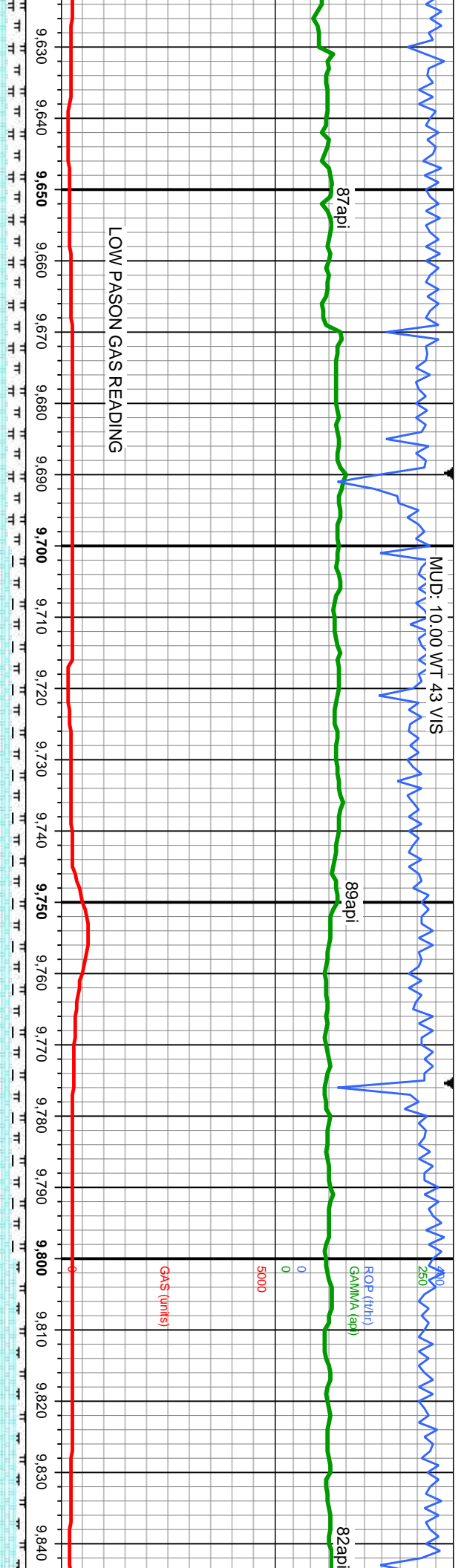
MD: 9,283'
TVD: 7,082.1'
Inclination: 90.4 °
Azimuth: 269.87 °
VS: 1,047.82'

MD: 9,369'
TVD: 7,081.83'
Inclination: 89.96 °
Azimuth: 268.98 °
VS: 1,133.72'

CHK: lt-med gy, blk, sft, f gr, mod srt, wxy-rthy lstr;
MRLST: dk-med gy, sb ply, med sft-fm, brt, gt, vf gr, w
srt, silty tex, lam, string mky bl cut, bri bl ring

CHK: lt-med gy, blk, sft, f gr, mod srt, wxy-rthy lstr;
MRLST: dk-med gy, sb ply, med sft-fm, brt, gt, vf gr, w
srt, silty tex, lam, string mky bl cut, bri bl ring

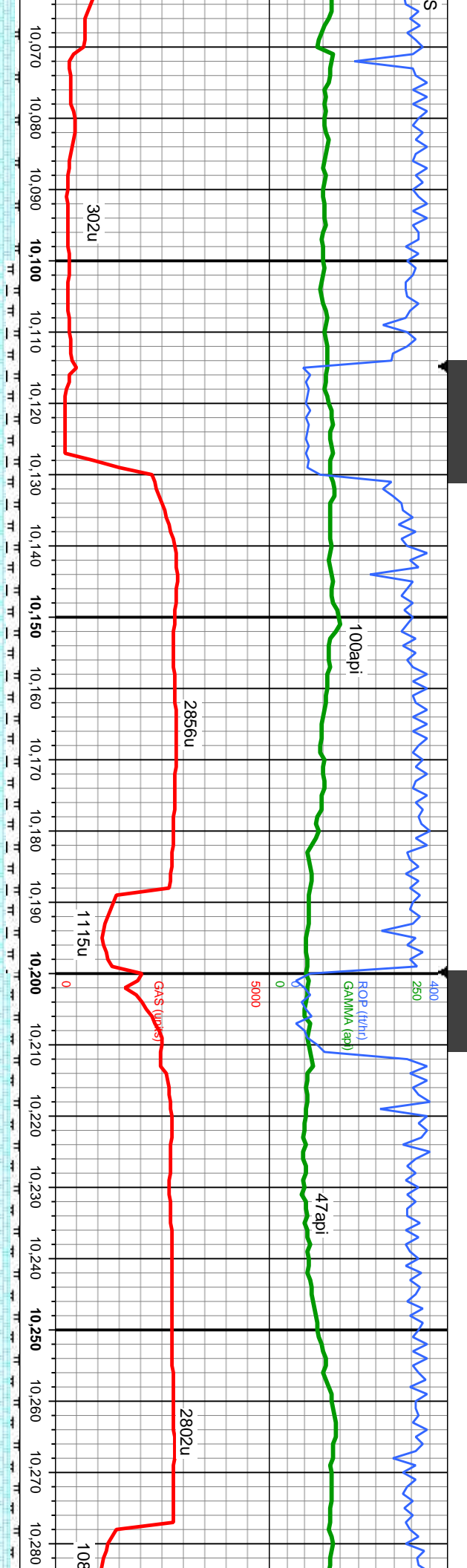




4'	MD: 9,709'	6300	
81.68'	TVD: 7,081.93'		
n: 90°	Inclination: 89.66°		
267.81°	Azimuth: 268.2°		
8.03'	VS: 1,472.8'	TVD (ft)	

CHK: lt-med gy, blk, sft, f gr, mod srt, wxy-rthy lstr, mot; MRLST: dk-med gy, sb ply, med sft-frm, brit, gt, f gr, w srt, silty tex, lam, stmg mky bl cut, bri bl ring	CHK: lt-med gy, blk, sft, vf gr, mod srt, wxy-rthy lstr, MRLST: dk-med gy, sb ply, med sft-frm, brit, gt, vf gr, w srt, silty tex, lam, stmg mky bl cut, bri bl ring	7500	
---	--	------	--



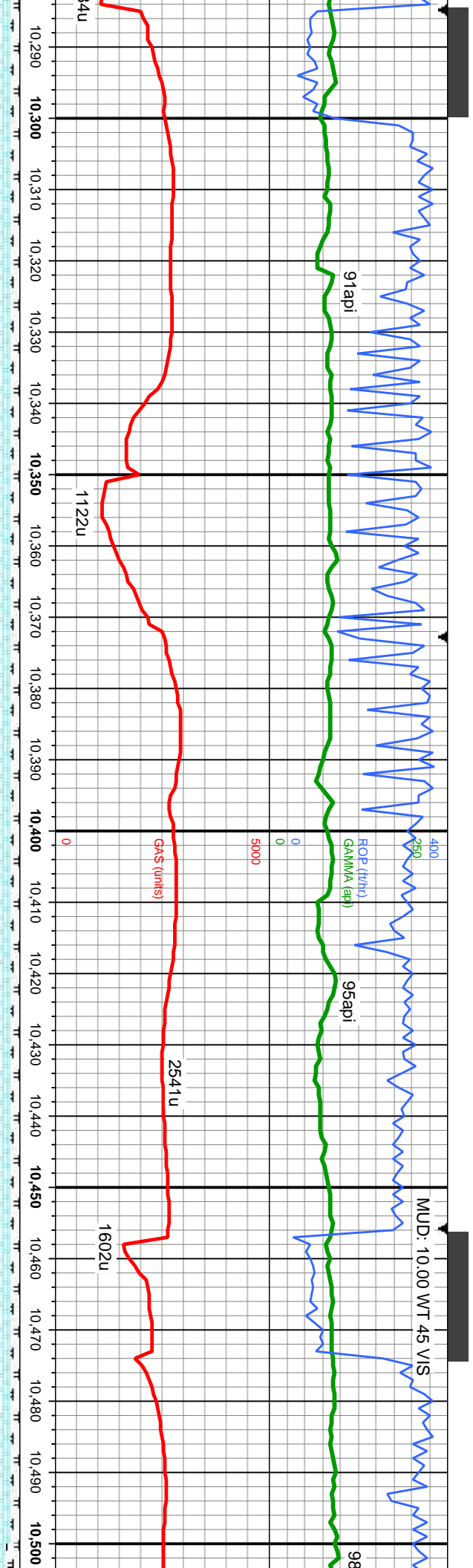


MD: 10,133'
TVD: 7,085.59'
Inclination: 88.58 °
Azimuth: 267.6°
VS: 1,896.02'

MD: 10,219'
TVD: 7,087.59'
Inclination: 88.76 °
Azimuth: 266.83°
VS: 1,981.67'

CHK: lt-med gy, occ wh, blk, sft, vf gr, mod srt, wxy-rthy lstr, mot, v calc; MRLST: dk-med gy, sb ply, med sft-frm, brt, gt, vf gr, w srt, sily tex, lam, mod calc, stmg mky bl cut, brt bl ring	CHK: lt-med gy, occ wh, blk, sft, f gr, mod srt, wxy-rthy lstr, mot, v calc; MRLST: dk-med gy, sb ply, med sft-frm, brt, gt, vf gr, w srt, sily tex, lam, mod calc, stmg mky bl cut, brt bl ring
---	--





MD: 10,306'
TVD: 7,088.76'
Inclination: 89.69 °
Azimuth: 267.43 °
VS: 2,068.31'

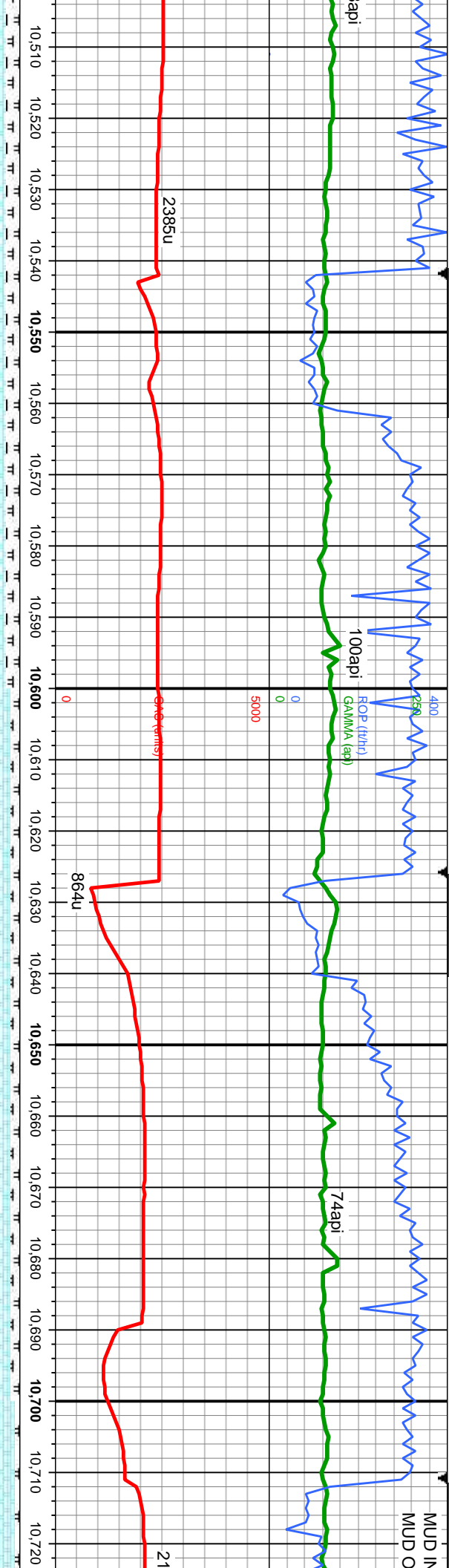
MD: 10,391'
TVD: 7,089.84'
Inclination: 88.86 °
Azimuth: 267.11 °
VS: 2,152.99'

MD: 10,476'
TVD: 7,091.44'
Inclination: 88.98 °
Azimuth: 267.7 °
VS: 2,237.67'

CHK: lt-med gy, occ wh, blk, sft, f gr, mod srt, wxy-rthy lstr, mot, v calc, MRLST: dk-med gy, sb ply, med sft-firm, brit, gt, vf gr, w srt, silty tex, lam, v calc, string mky bl cut, bri bl ring

CHK: lt-med gy, blk, sft, f gr, mod srt, wxy-rthy lstr, mot, v calc, MRLST: dk-med gy, sb ply, med sft-firm, brit, gt, vf gr, w srt, silty tex, lam, v calc, string mky bl cut, bri bl ring





MD: 10,561'
TVD: 7,092.43'
Inclination: 89.69 °
Azimuth: 267.97 °
VS: 2,322.42'

TVD (ft)

6300

MD: 10,647'
TVD: 7,092.87'
Inclination: 89.72 °
Azimuth: 267.99 °
VS: 2,408.18'

MD:
TVD:
Inclination:
Azimuth:
VS:

CHK: lt-med gy, blkly, sft, f gr, mod srt, wxy-rthy lstr, mot, v
calc; MRLST: dk-med gy, sb ply, med sft-fm, brit, gt, vf
gr, w srt, silty tex, lam, v calc, string mky bl cut, bri bl ring

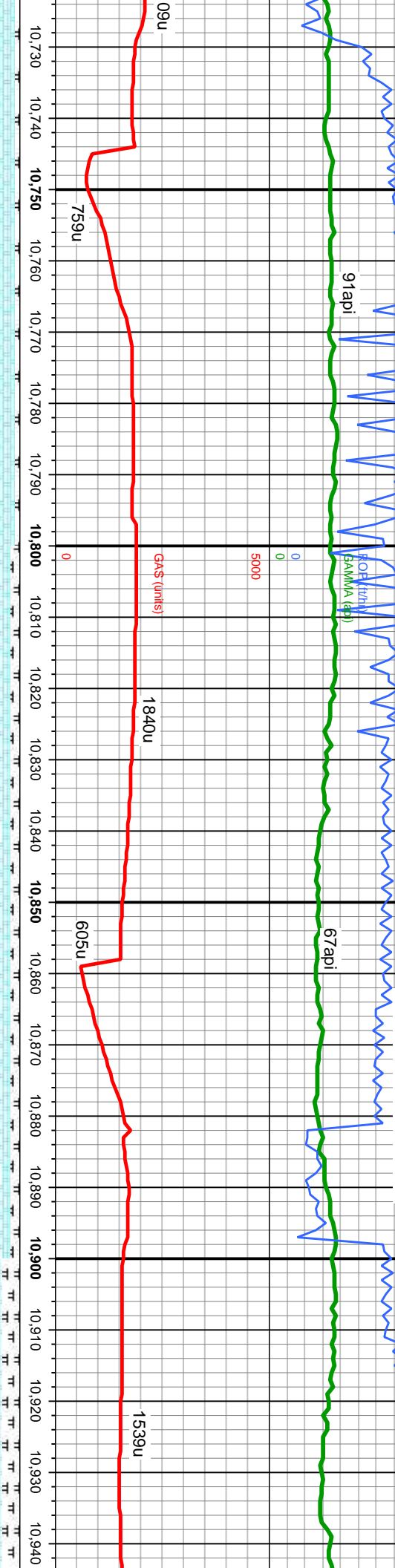
7500

CHK: lt-med gy, sb blkly - sb ply, sft, f gr, mod srt, wxy-rthy lstr,
mot, v calc; MRLST: dk-med gy, sb ply, med sft-fm, brit, gt, vf
gr, w srt, silty tex, lam, v calc, string mky bl cut, bri bl ring

CHK:
mot, v
gr, w s



WT 45 VIS
WT 47 VIS
WT 44 VIS
WT 47 VIS



D: 10,732'
VD: 7,092.92'
Inclination: 90.21°
Azimuth: 269.17°
VS: 2,493'

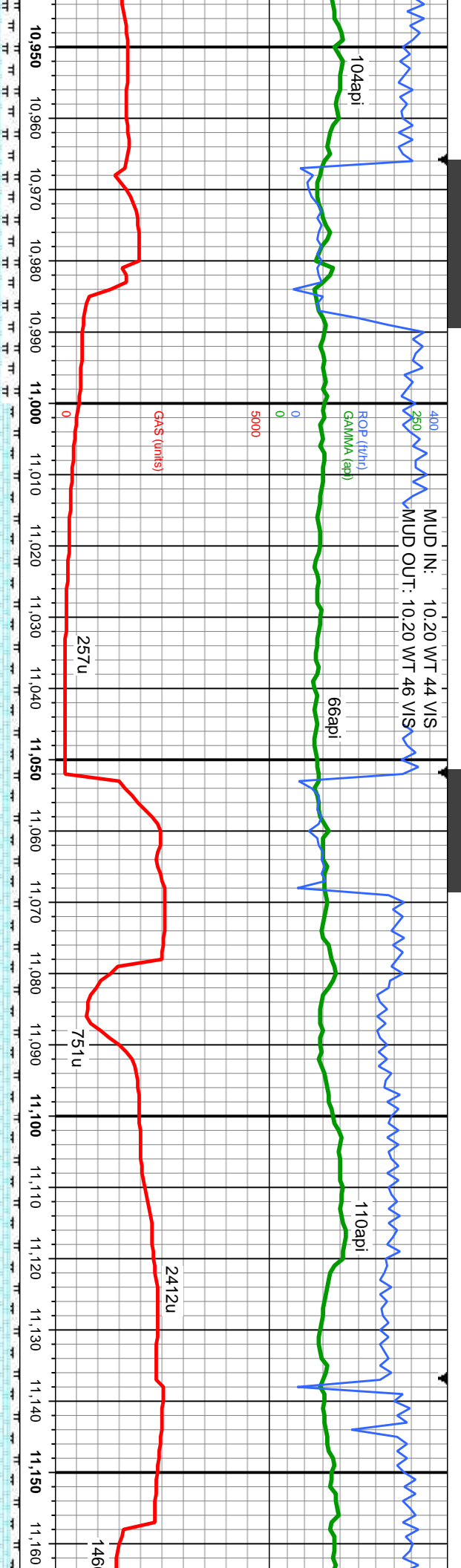
MD: 10,817'
TVD: 7,093.07'
Inclination: 89.59°
Azimuth: 268.63°
VS: 2,577.86'

MD: 10,902'
TVD: 7,093.79'
Inclination: 89.44°
Azimuth: 268.1°
VS: 2,662.66'

lt-med gy, sb blk, sft, f gr, mod srt, wxy-rthy istr, calc, MRLST: dk-med gy, sb blk, med sft-fm, brit, gt, vf
srt, silty tex, lam, v calc, stmg mky bl cut, bri bl ring

CHK: lt-med gy, sb blk, sft, f gr, mod srt, wxy-rthy istr, mot, v calc, MRLST: dk-med gy, sb blk, med sft-fm, brit, gt, vf gr, w srt, silty tex, lam, v calc, tr fos frags, stmg mky bl cut, bri bl ring





MD: 10,987'
TVD: 7,093.96'
Inclination: 90.33 °
Azimuth: 268.03 °
VS: 2,747.44'

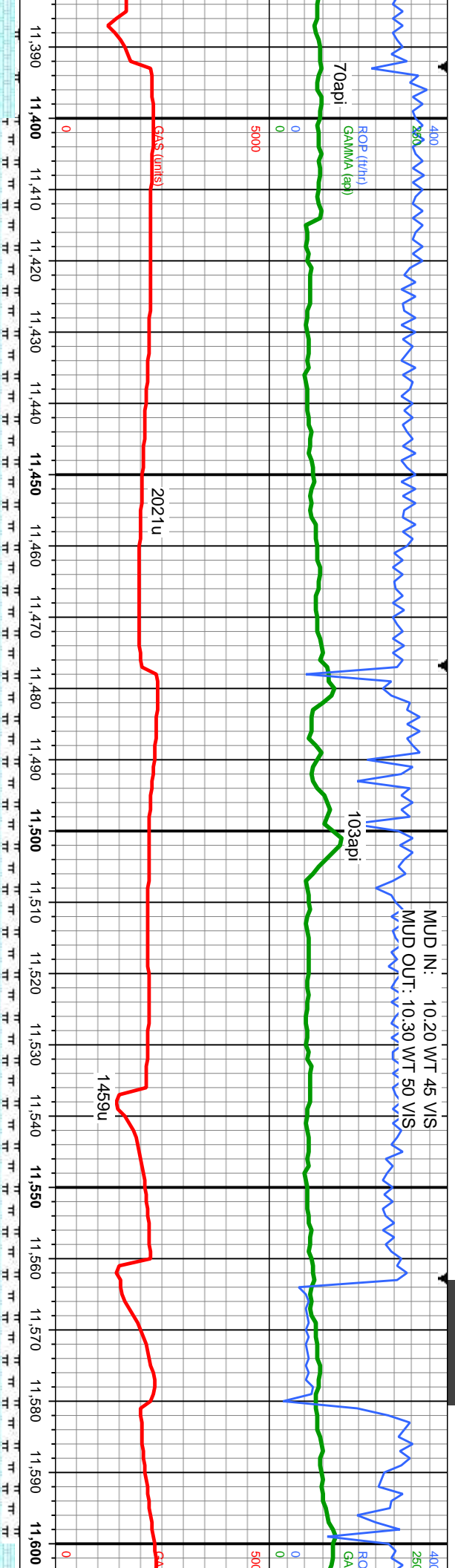
6300
TVD (ft)

MD: 11,072'
TVD: 7,092.74'
Inclination: 91.32 °
Azimuth: 268.55 °
VS: 2,832.23'

MD: 11,158'
TVD: 7,090.85'
Inclination: 91.32 °
Azimuth: 268.7 °
VS: 2,918.04'

mod pty, sft, f gr, mod srt, wxy-rthy lstr,	CHK: lt-med gy, sb blk - sb pty, sft, f gr, mod srt, wxy-rthy lstr,
mod gy, sb pty, med sft-frm, brit, gt, vf gr,	mod, v calc: MRLST: dk-med gy, sb pty, med sft-frm, brit, gt, vf gr,
fos frags, sting mky bl cut, bri bl ring	w srt, slty tex, lam, v calc, tr fos frags, sting mky bl cut, bri bl ring





MD: 11,413'
TVD: 7,087.37'
Inclination: 89.56 °
Azimuth: 268.8 °
VS: 3,172.57'

CHK: lt-med gy, sb blkv - sb ply, sft, f gr, mod srt, wxy-rthy lst, mot, v calc; MRLST: dk-med gy, sb ply, med sft-firm, brit, gt, vf gr, w srt, silty tex, lam, v calc, rr fos frags, sting mky bl cut, bri bl ring

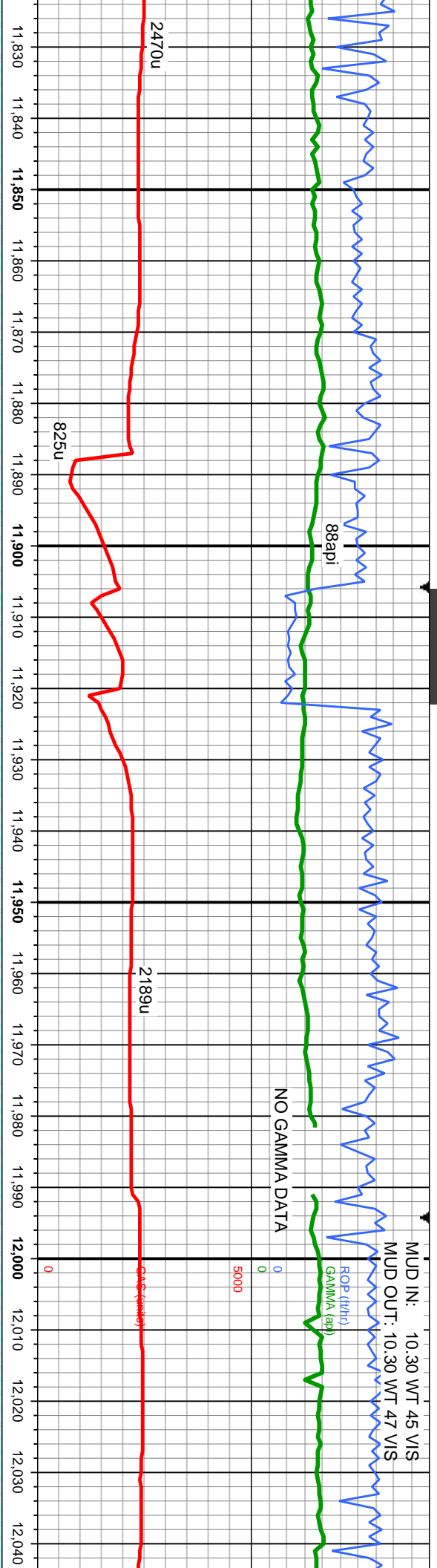
MD: 11,584'
TVD: 7,088.98'
Inclination: 90.27 °
Azimuth: 269.67 °
VS: 3,343.34'

CHK: lt-med gy, sb blkv - sb ply, sft, f gr, mod srt, wxy-rthy lst, mot, v calc; MRLST: dk-med gy, sb ply, med sft-firm, brit, gt, vf gr, w srt, silty tex, lam, v calc, sting mky bl cut, bri bl ring





MUD IN: 10.30 WT 45 VIS
MUD OUT: 10.30 WT 47 VIS



MD: 11,841'
TVD: 7,088.97'
Inclination: 88.89 °
Azimuth: 268.32 °
VS: 3,599.87'

MD: 11,926'
TVD: 7,090'
Inclination: 89.72 °
Azimuth: 268.13 °
VS: 3,684.65'

MD: 12,012'
TVD: 7,090.38'
Inclination: 89.78 °
Azimuth: 268.44 °
VS: 3,770.45'

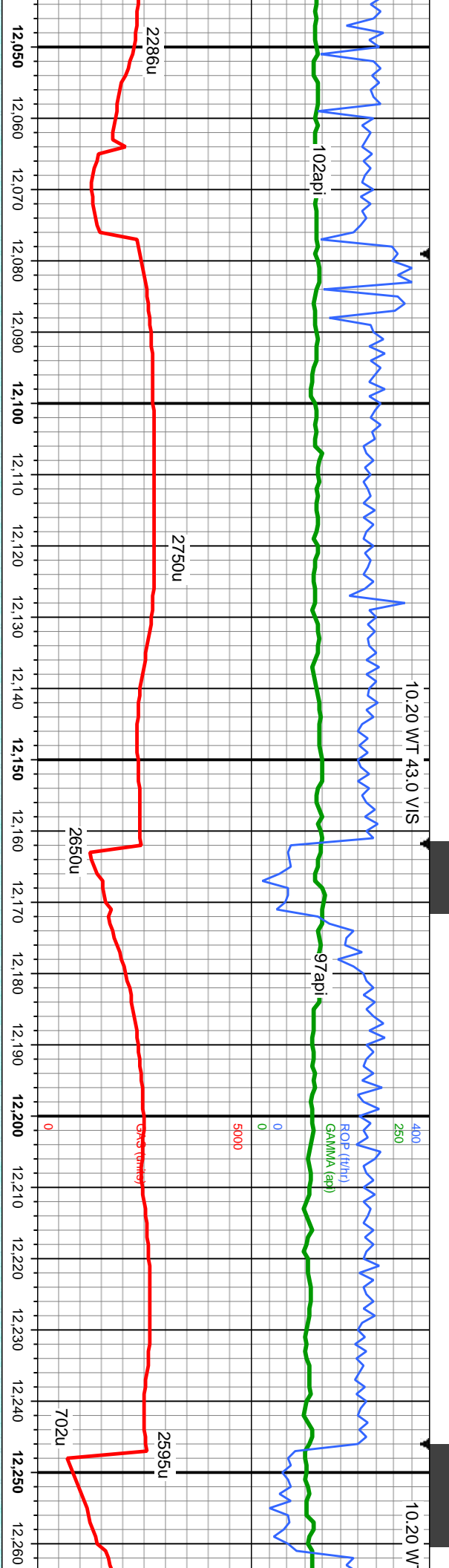
CHK: lt-med gy, sb blk y - sb plty, sft, f gr, mod srl,
wxy-rthy lstr, mot, v calc, stmg mky bl cut, bri bl ring

CHK: lt-med gy, sb blk y - sb plty, sft, f gr, mod srl,
wxy-rthy lstr, mot, v calc, stmg mky bl cut, bri bl ring

7500

CHK: lt-med gy, sb bl
wxy-rthy lstr, mot, v c
ring





MD: 12,097'
TVD: 7,090.98'
Inclination: 89.41 °
Azimuth: 268.63 °
VS: 3,865.27'

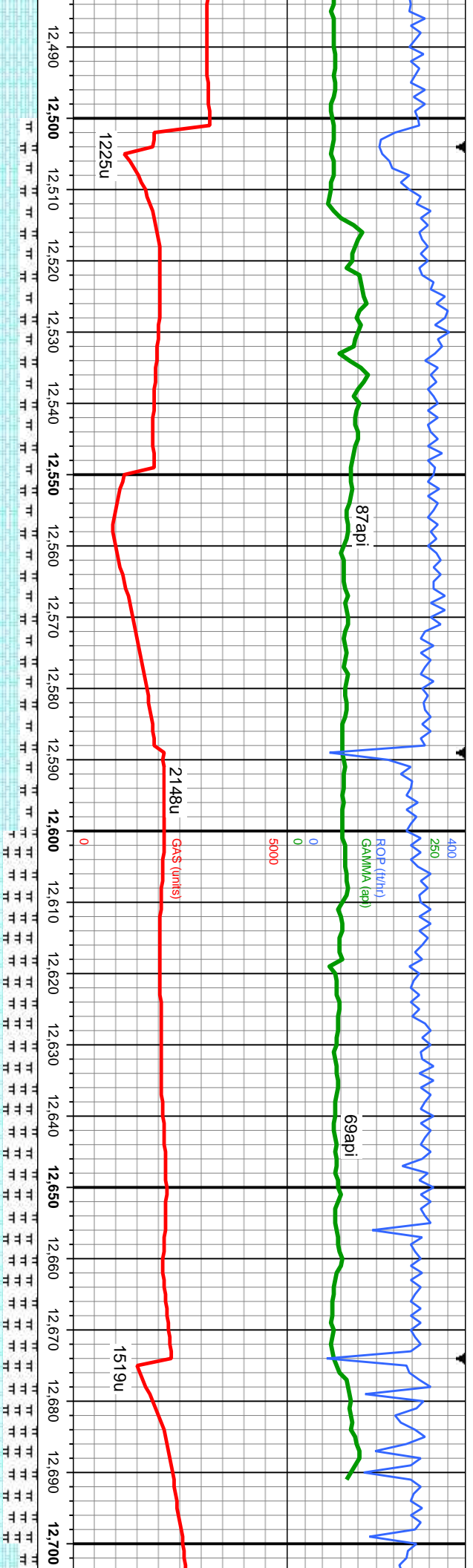
MD: 12,182'
TVD: 7,091.9'
Inclination: 89.35 °
Azimuth: 268.59 °
VS: 3,940.09'

TVD (ft)

MD: 12,182'
TVD: 7,091.9'
Inclination: 89.35 °
Azimuth: 268.59 °
VS: 3,940.09'

ky - sb ply, sft, vř gr, mod srt, alac, fast string mky bl cut, bri bl	CHK: lt-med gy, blký - sb ply, sft, vř gr, mod srt, wxy-rthy lstr, mot, v calc, string mky bl cut, bri bl ring	7500
--	--	------





MD: 12,523'
TVD: 7,093.09'
Inclination: 89.93 °
Azimuth: 269.11 °
VS: 4,280.41'

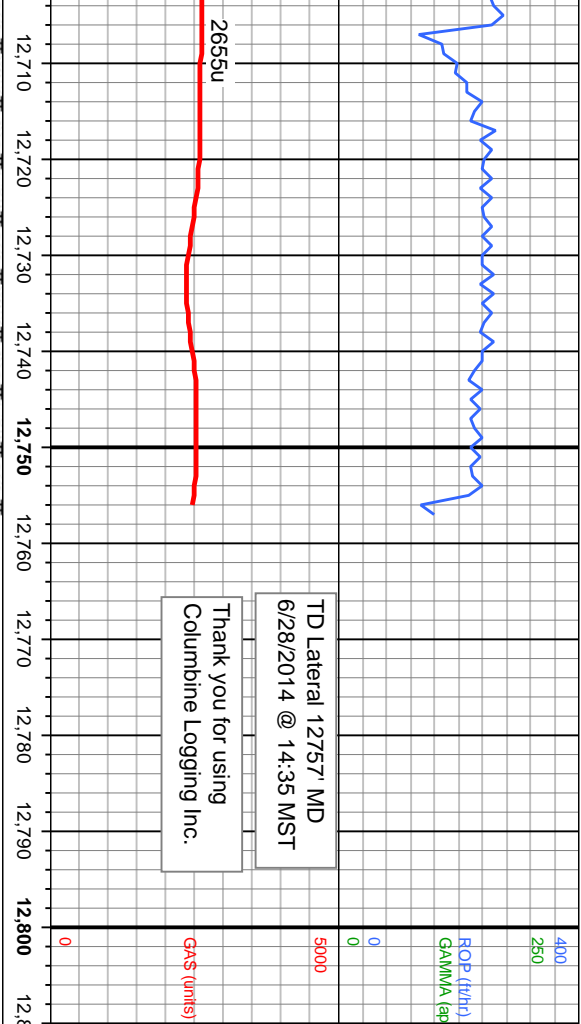
MD: 12,608'
TVD: 7,093.37'
Inclination: 89.69 °
Azimuth: 269.31 °
VS: 4,365.29'

MD: 12,689'
TVD: 7,094.44'
Inclination: 88.79 °
Azimuth: 269.5 °
VS: 4,446.19'

CHK: med gy, sb blkly - sb plty, sft, f gr, mod srt, wxy-rthy lstr, mot,
v calc; MRLST: dk-med gy, sb plty, med sft-frm, brit, gt, vf gr, w
srt, slty tex, lam, v calc, rr fos frags, stmg mky bl cut, bri bl ring

CHK: med gy, sb blkly - sb plty, sft, f gr, mod srt, wxy-rthy lstr, n
MRLST: dk-med gy, sb plty, med sft-frm, brit, gt, vf gr, w srt, slty
calc, rr fos frags, stmg mky bl cut, bri bl ring





MD: 12,757'
TVD: 7,095.88'
Inclination: 88.79 °
Azimuth: 269.5°
VS: 4,514.09'

TVD (ft)

6300

7500

