



Realtime Logs

Natural Formation Evaluation
Gamma Ray

Company: Anadarko

Well: Barefoot 32C-25HZ

Field: Weld County (Kerr McGee)

County: Continental US State: United States

Surface Location:

Latitude: 40° 11' 55.972" N

Longitude: 104° 56' 38.933" W

Other Services:

API Number:

051233918700

Section 25

TWN: 3S

Range: 66W

Permanent Datum (P.D.):

Ground Level

Elevation:

4904.00 ft.

Elevations:

17.00 ft.

N/A

Log Measured From:

Kelly Bushing

17.00 ft.

Above P.D.

KB:

DF:

GL:

4904.00 ft.

Depth Reference:

Driller's Depth

Interval Logged

Dates

Magnetic Field Reference

Top:

6869.0 ft.

Date From: 13/Jun/14

Dip Angle:

66.90 °

Azi Reference North:

True

Bottom:

12873.0 ft.

Date To: 18/Jun/15

Total

Mag to Reference

8.68 °

Spud Date:

11/Jun/14

Field Strength:

52677.0 nT

North Correction:

Borehole Record

Casing Record

Hole Size

From

To

Size

Weight

From

To

13,500 in.

Surface

1570.0 ft.

9,000 in.

36.00 lb/ft

Surface

1570.0 ft.

8,750 in.

1570.0 ft.

7874.0 ft.

7,000 in.

36.00 lb/ft

Surface

7869.0 ft.

6,125 in.

7874.0 ft.

12942.0 ft.

Mud Properties Record

Date / Time	LWD Run No.	Measured Depth (ft.)	Mud Type	Density (sg)	Viscosity (cp)	pH	Fluid Loss (cc)	Oil / Water	Source	Total Chlorides (ppm)	K+ (%)
06/13/2014	1	6889.0	Water-Based Mud	10.0	40	9.4	N/A	1/90	Active Pits	1700	N/A
6/14/2014	1	7874.0	Water-Based Mud	10.1	46	9.5	N/A	2/89	Active Pits	1800	N/A
06/17/2014	2	10821.0	Water-Based Mud	9.6	41	9.3	N/A	2/91	Active Pits	1900	N/A

Mnemonics

Curve	Description	Units
GRAX	Gamma Ray Apparent	API 0.5 ft. avg.
GRIX	Gamma Ray Density	Points
ROP_AVG	Rate of Penetration	ft/hr 3.0 ft. avg.
TCDX	Downhole Temperature	deg F
TVD	True Vertical Depth	ft.
WOBA_AVG	Surface Weight On Bit	klbf 1.0 ft. avg.

Equipment and Service Data

LWD Run No.	Tool	Serial Number	Measurement	Bit Offset (ft.)	Max O.D. (in.)	Min I.D. (in.)
1	SRIG	12673191	Gamma	58.87	6.750	3.250
1	DIR	12456790	Directional	62.24	6.750	3.250
2	DIR	12440863	Directional	66.83	4.750	2.750
2	SRIG	12578112	Gamma	63.45	4.750	2.750

Service and Tool Mnemonics

Mnemonic	Name	Description
DIR	Directional	Wellbore directional survey
SRIG	Inclination and Gamma	Probe based gamma ray and inclination module

Comments

1) Baker Hughes INTEQ run 1 utilized a 6.5 inch NaviGamma (Gamma Ray and Directional) tool behind a 8 3/4inch bit and steerable assembly from 6869 to 7874 ft. MD (6619 to 7239 ft. TVD).
2) Baker Hughes INTEQ run 2 utilized a 4.75 inch NaviGamma (Gamma Ray and Directional) tool behind a 6 1/8 inch bit and steerable assembly from 7874 to 12942 ft. MD (7239 to 7248 ft. TVD).

Remarks

Number	Measured Depth (ft.)	Hole Section (in.)	LWD Run No.	Remark
1	6869	8.750	1	The interval from 6810 to 6869 feet MD (6560 to 6619 feet TVD) was logged due to gamma offset at the start of the curve.
2	7874	6.125	2	The interval from 7814 to 7874 feet MD (7239 to 7238.95 feet TVD) was logged up to 24 hours after drilling due to tripping out of hole for maintenance of the tool joint.

the hole for casing and cement operations. Gamma data is attenuated due to logging behind casing.

3

12942

6.125

2

The interval from 12873 to 12942 feet MD (7245 to 7248 feet TVD) was not logged due to sensor offsets to bit at TD.



Company : Anadarko

Well : Barefoot 32C-25HZ

Interval : 6780.00 - 12950.00 feet

Created : 18/Jun/2014 5:12:54 PM

Gamma Ray Apparent 0.5 ft Avg [GRAX]

MD feet 1:240

DRILLD.ROP_AVG

Surface Weight On Bit 1.0 ft Avg [WOB_AVG]

1000

0

ft/hr

0

100

kilb

Downhole Temperature [TCDX]

100

250

degF

0 150

API

True Vertical Depth [TVD]

8000

5800

ft

6800

GRAX

GRAX

GRIX

See Remark 1

ROP_AVG

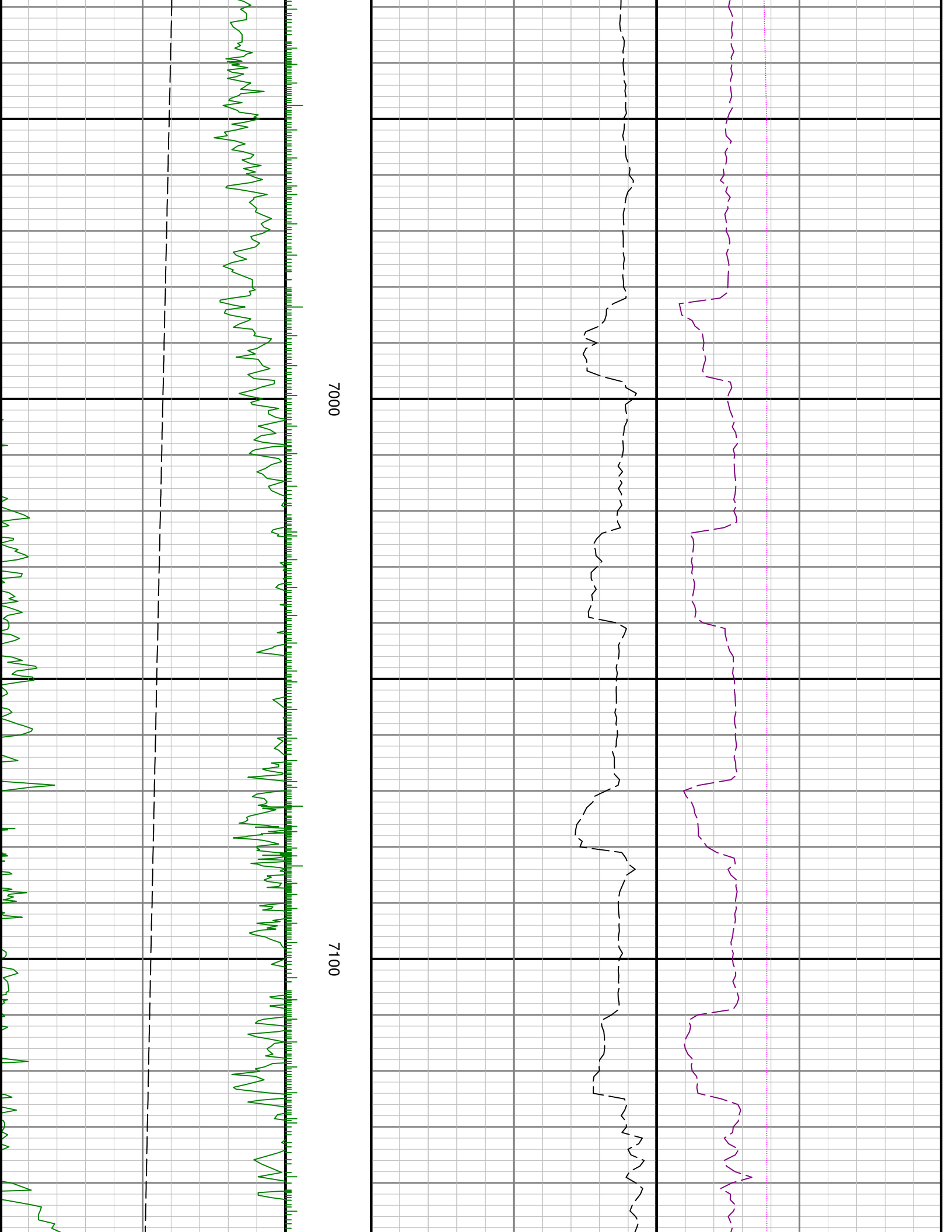
WOB_AVG

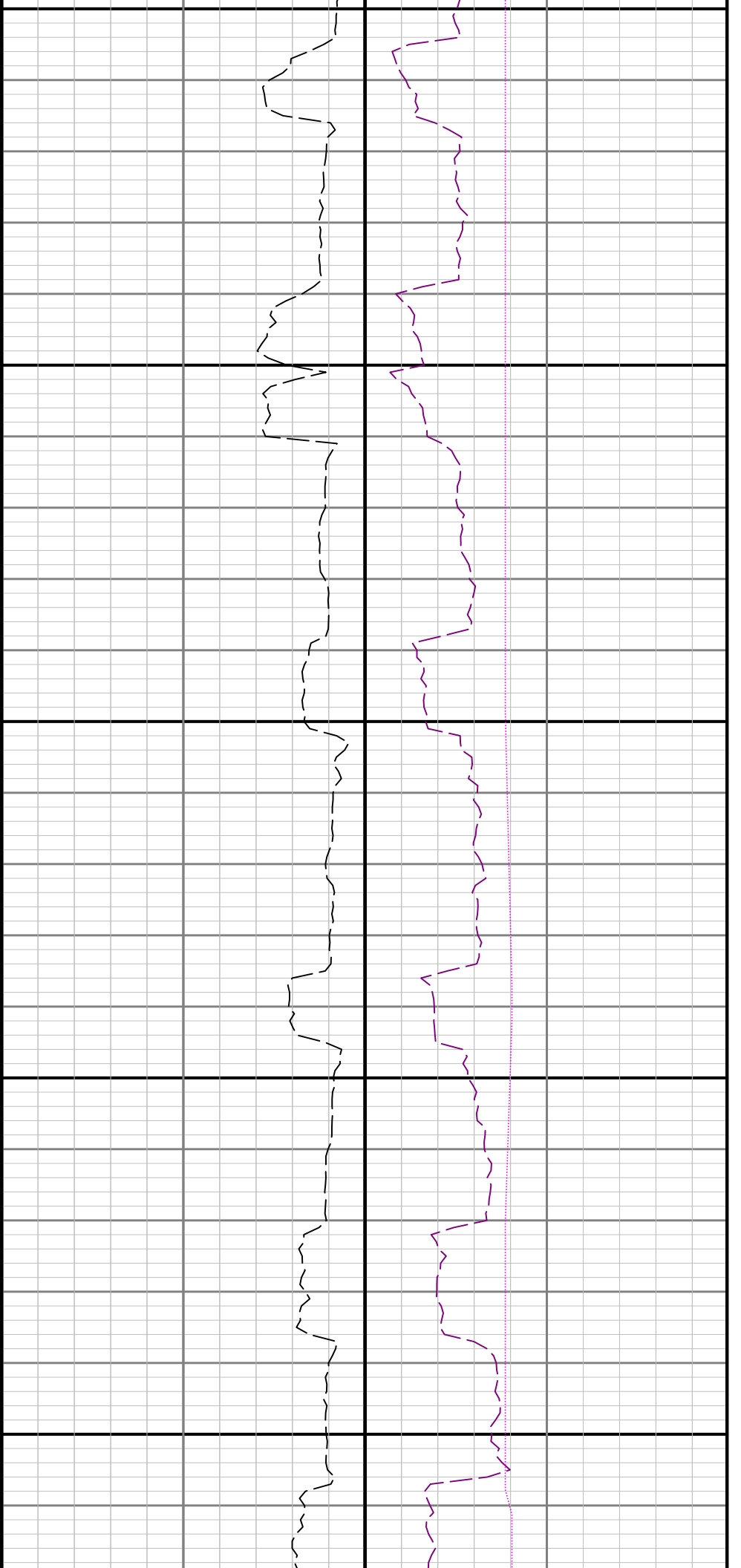
TCDX

TVD

> Run 1

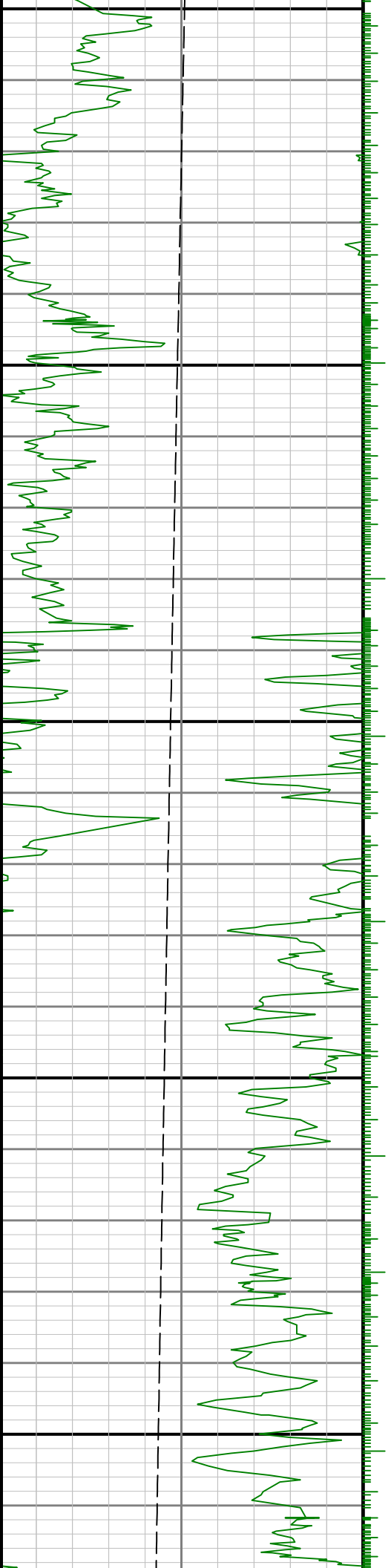
6900

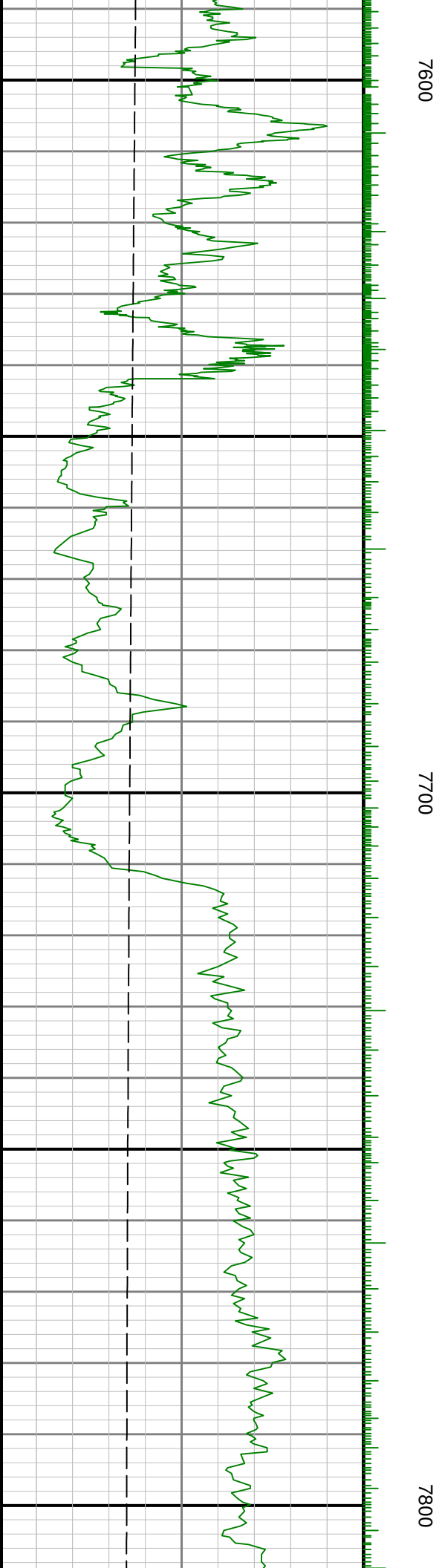
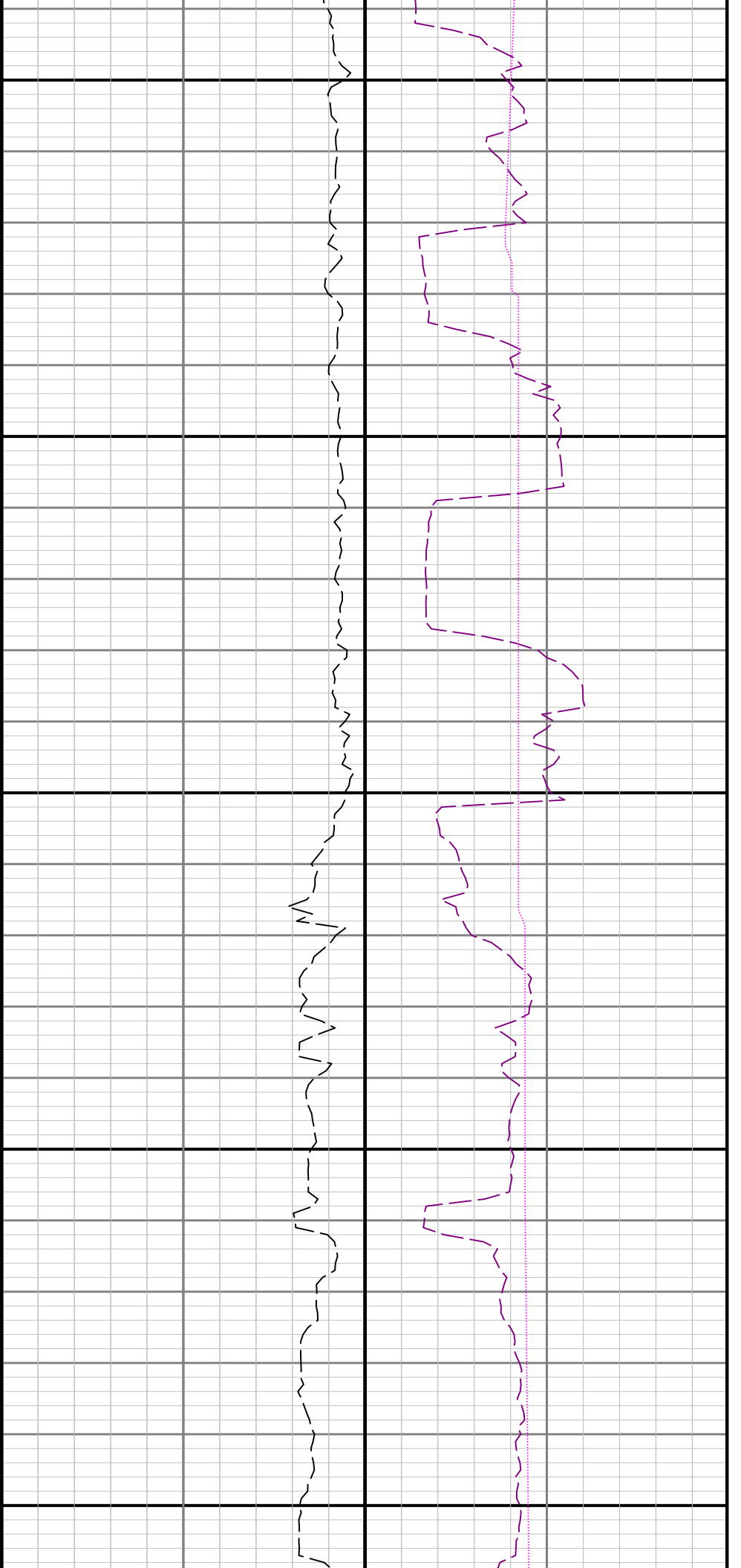


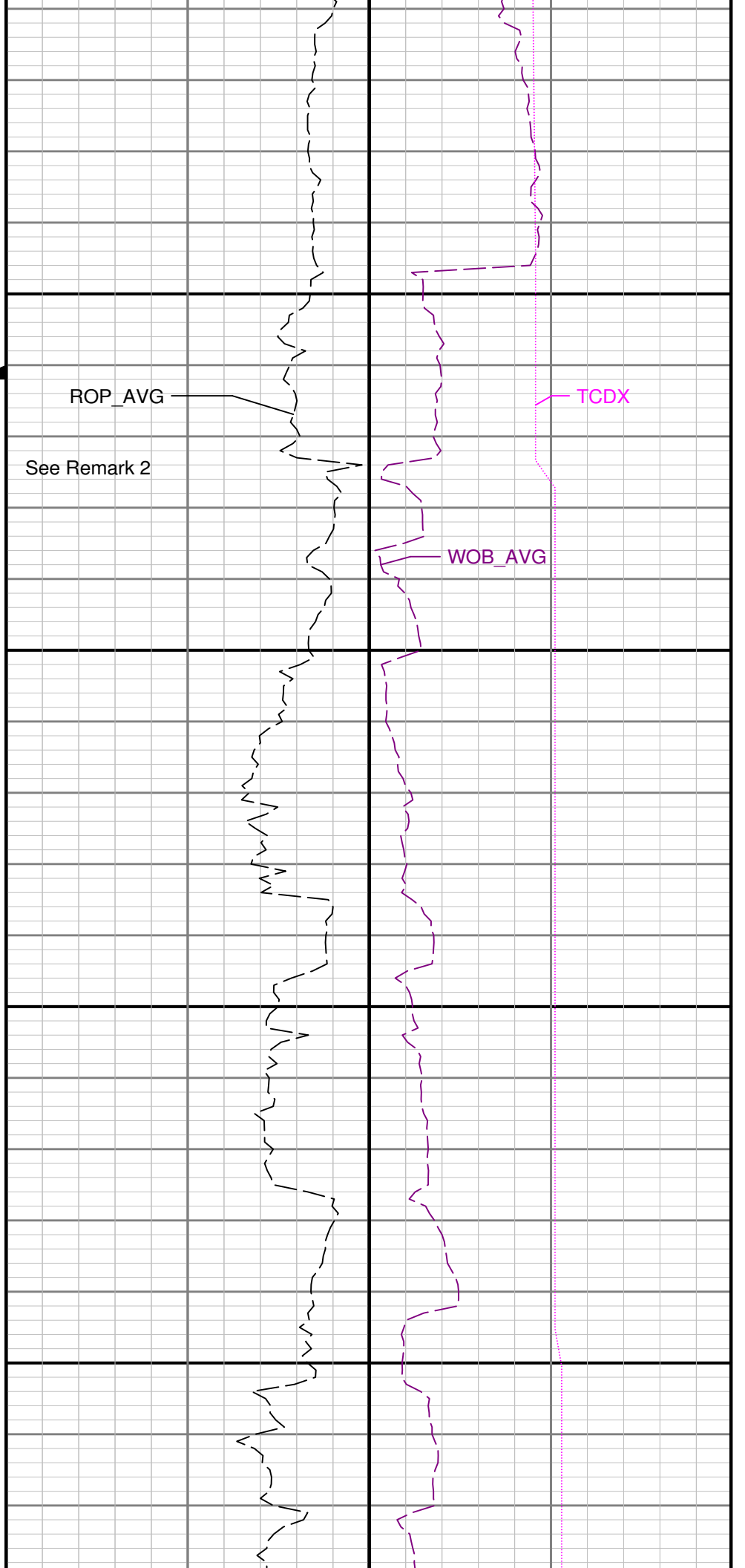
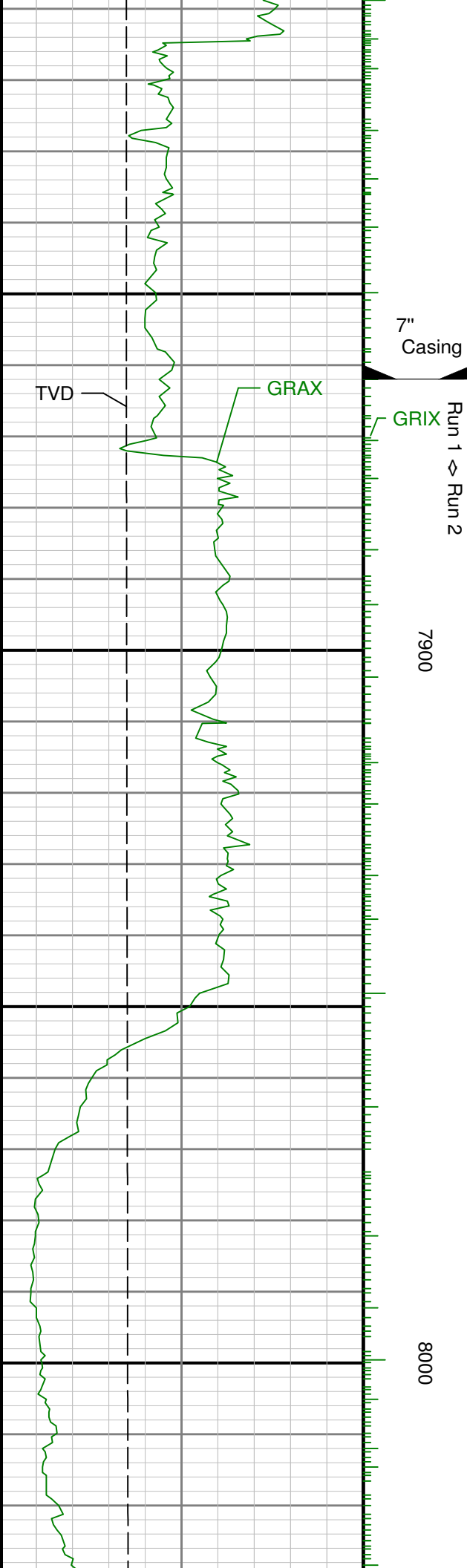


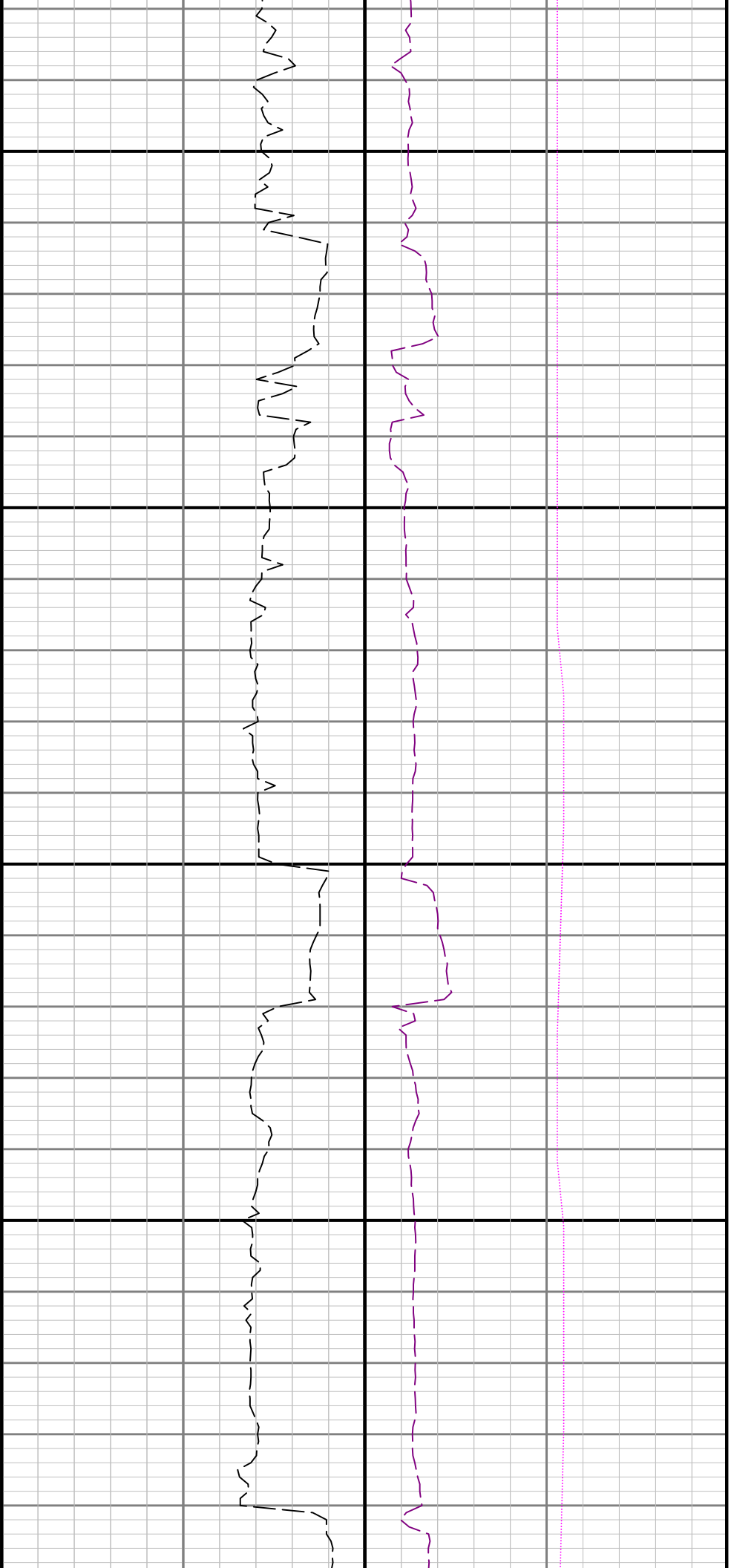
7200

7300



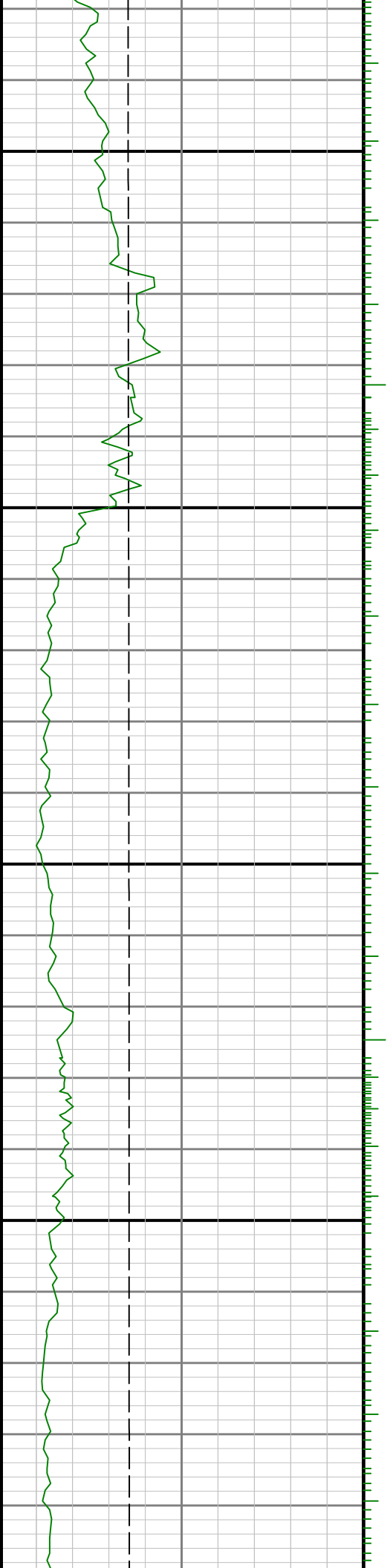


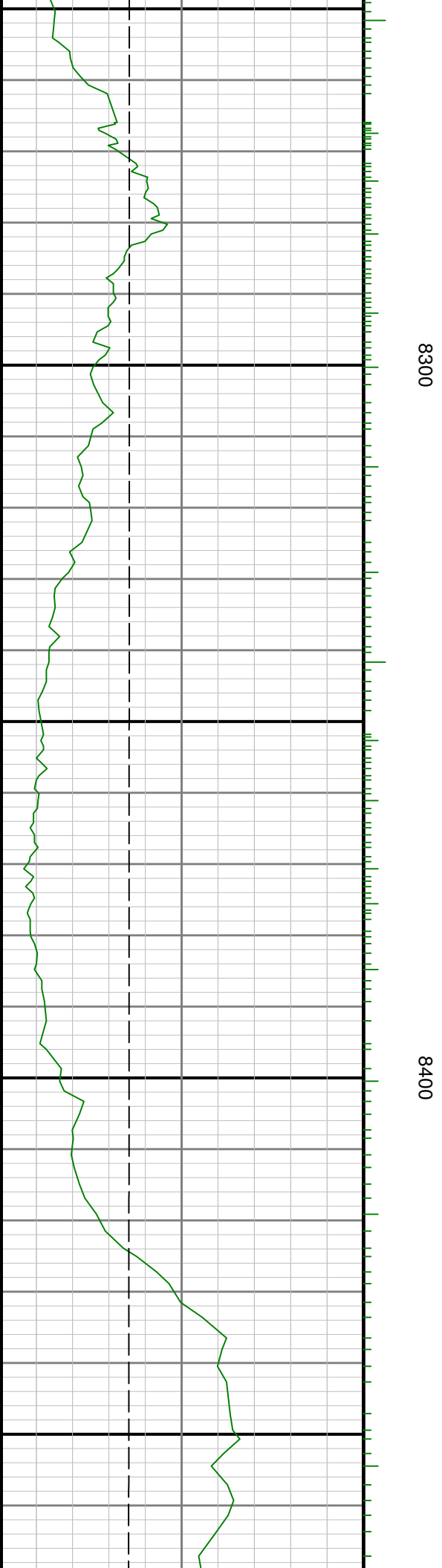
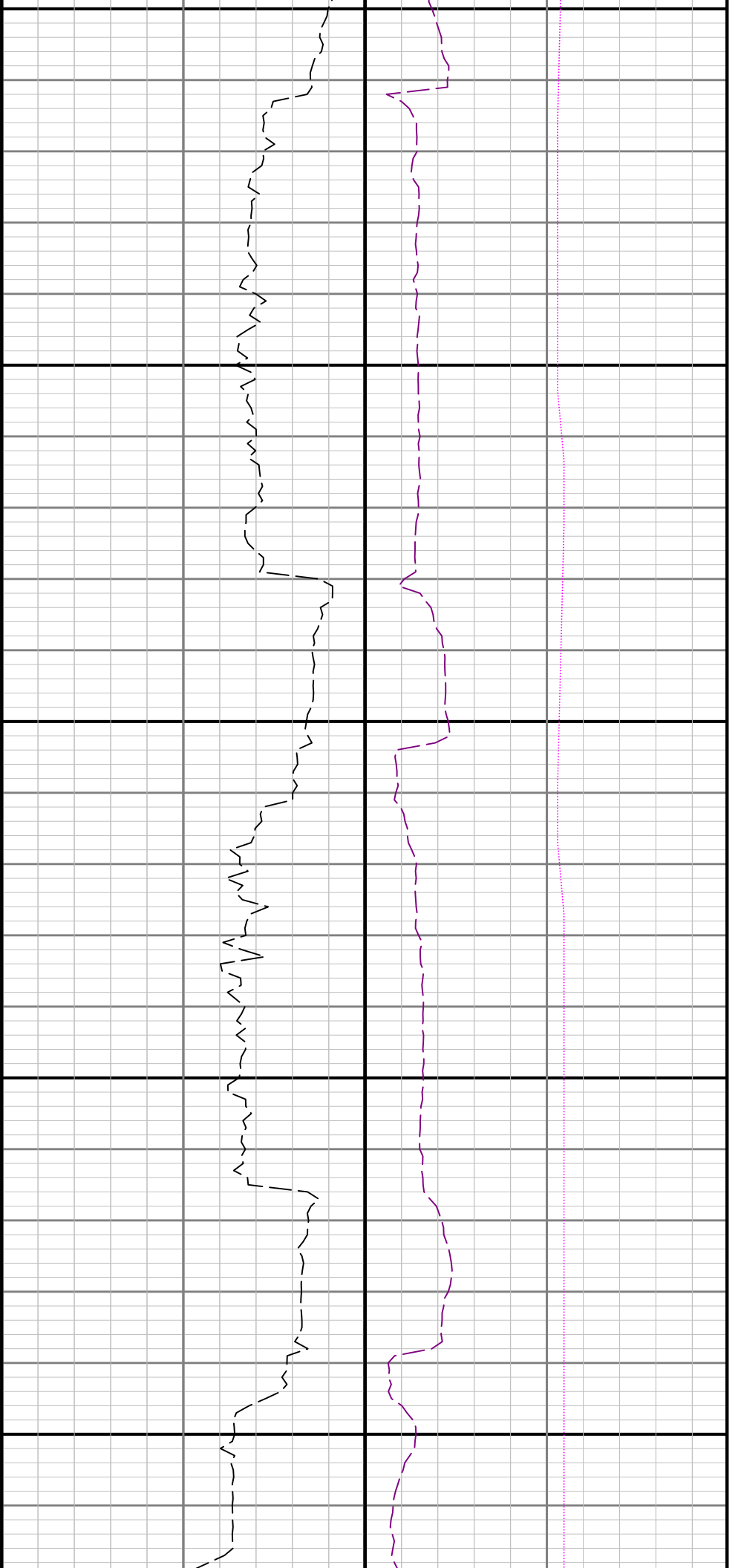


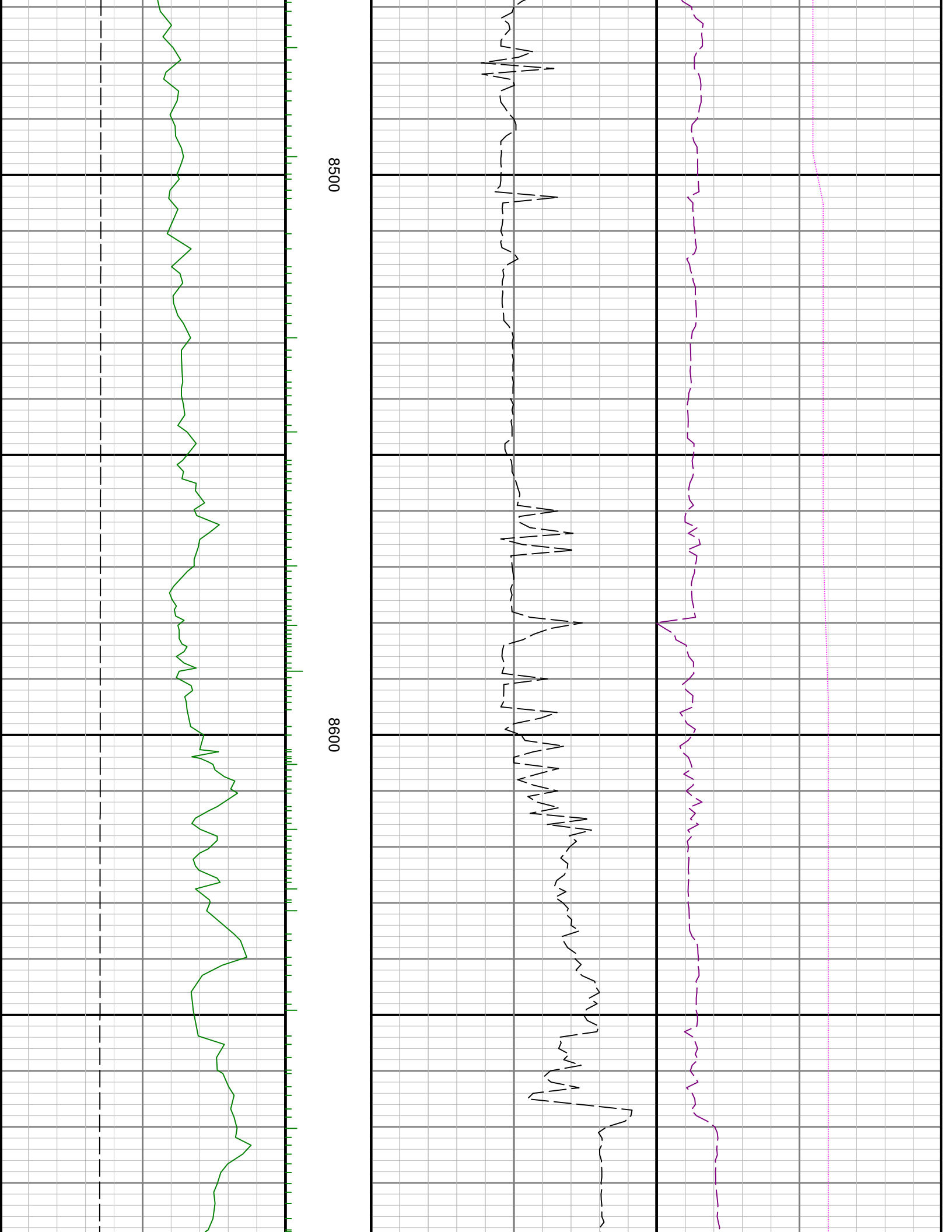


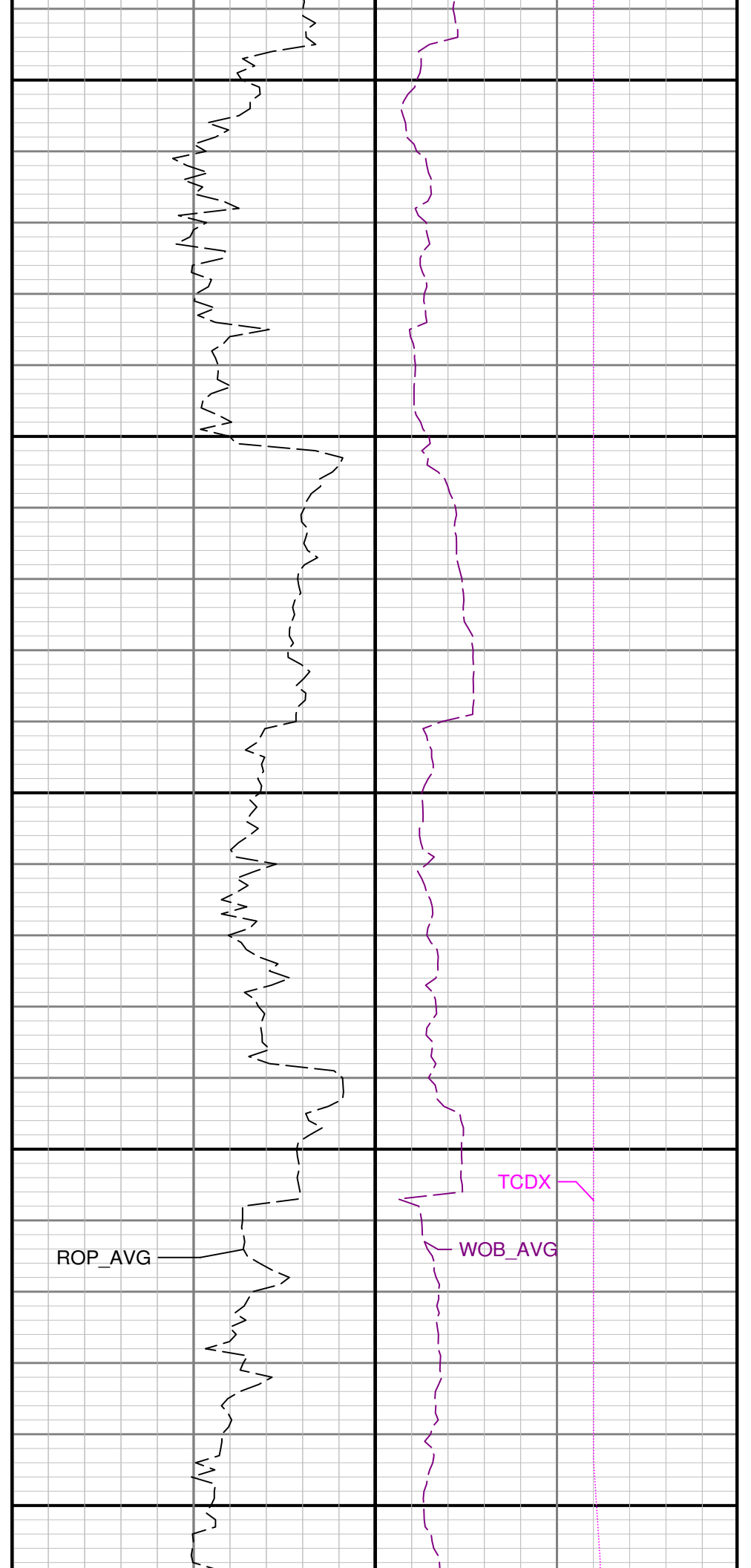
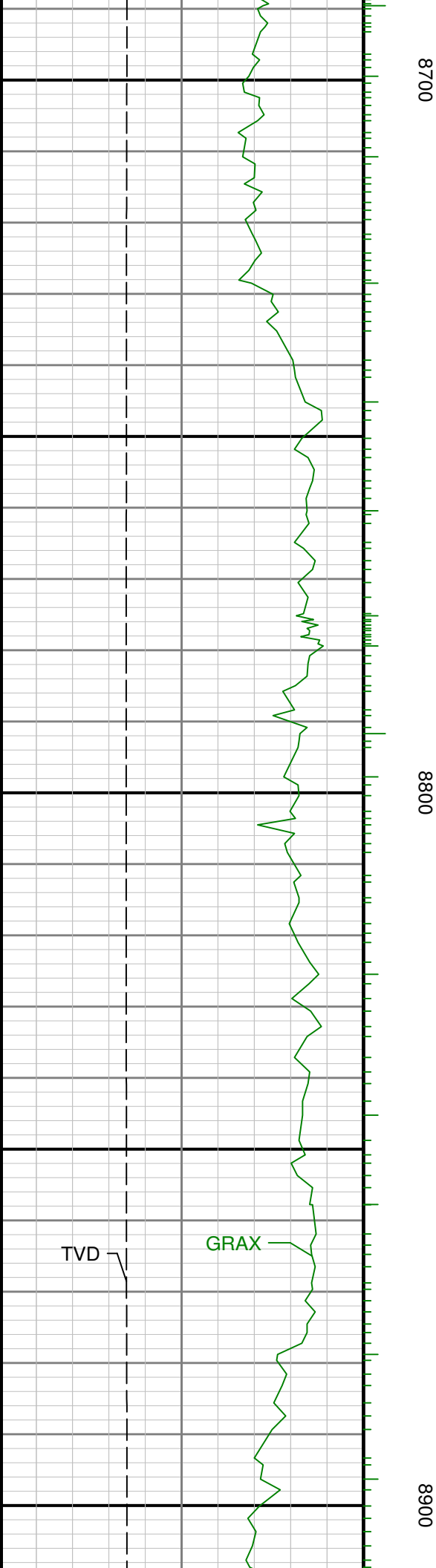
8100

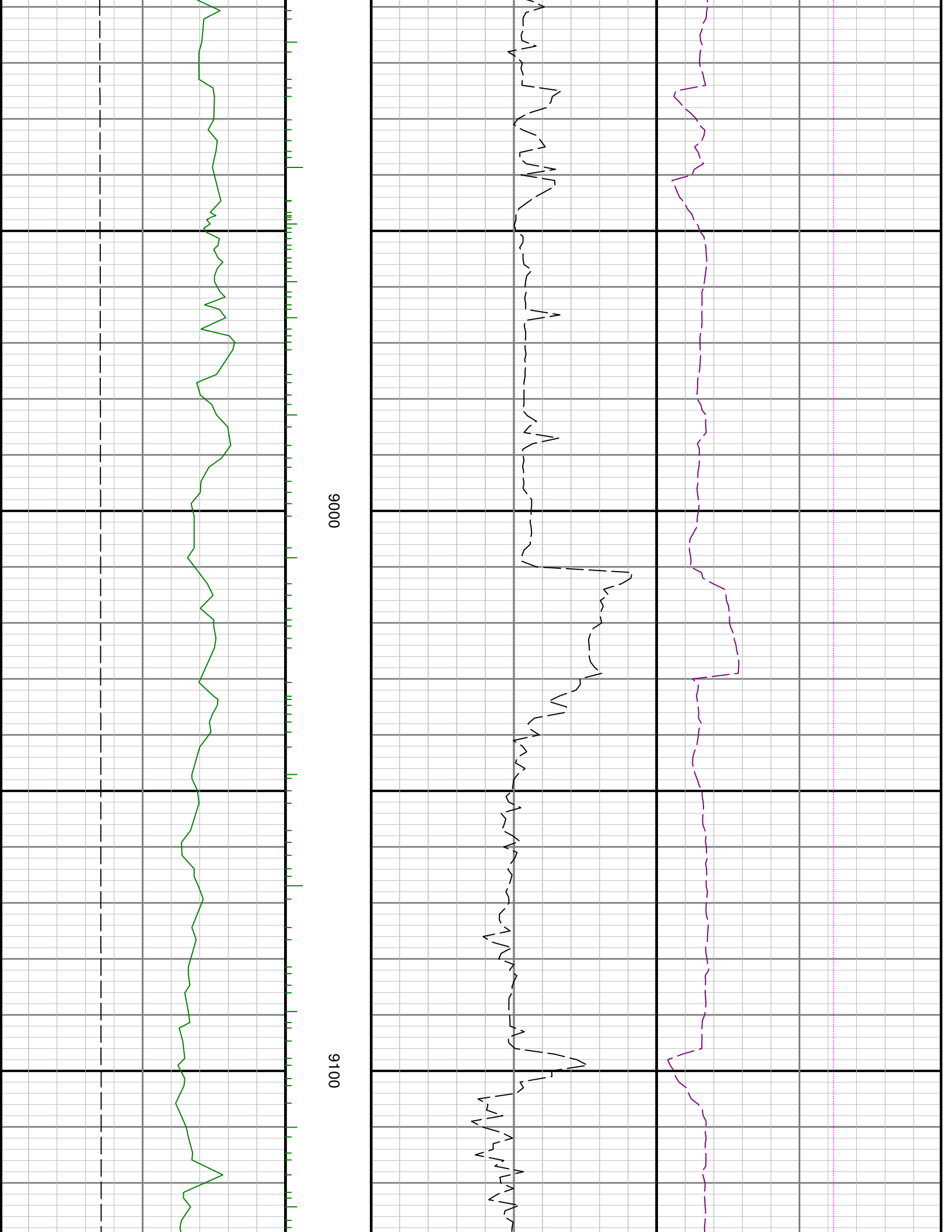
8200

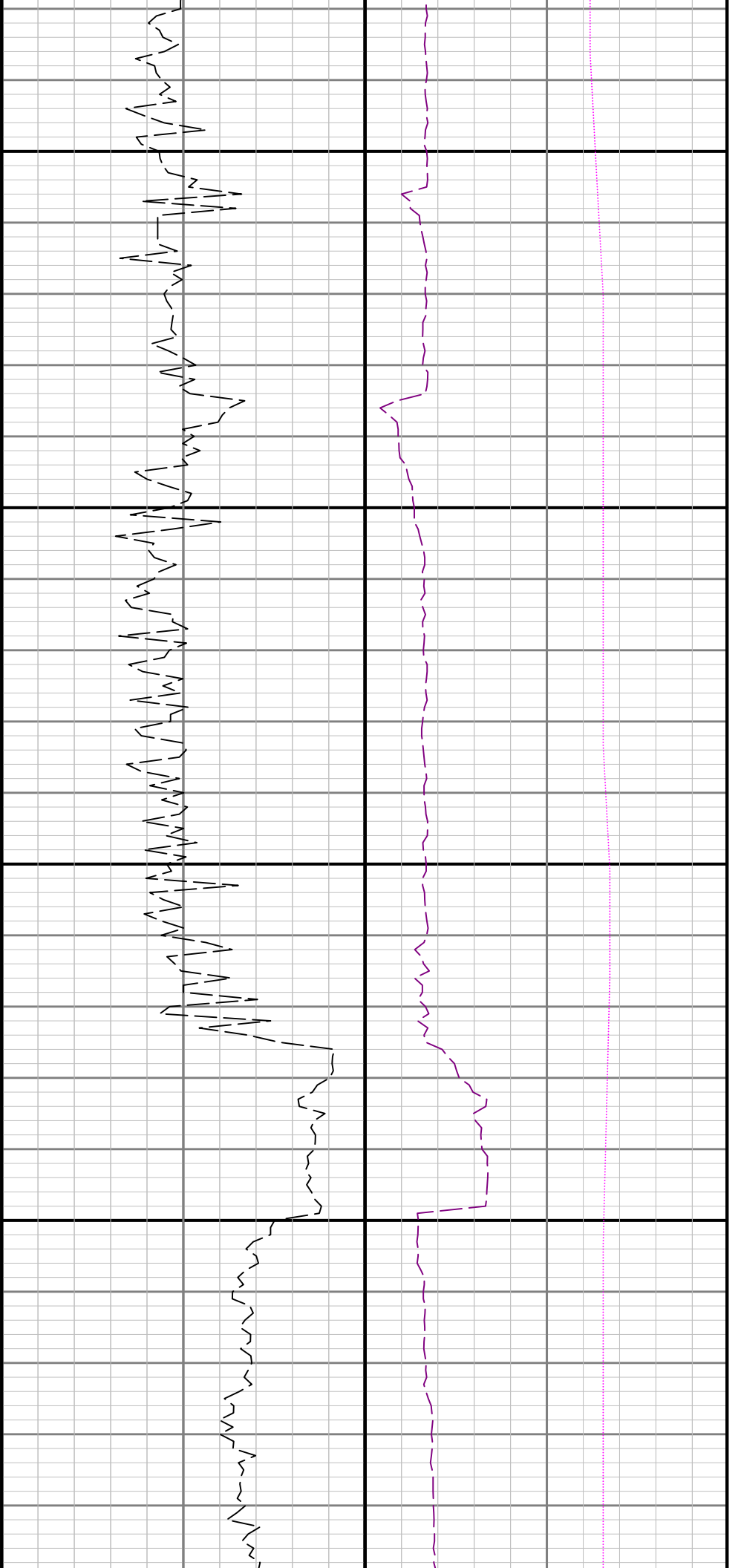






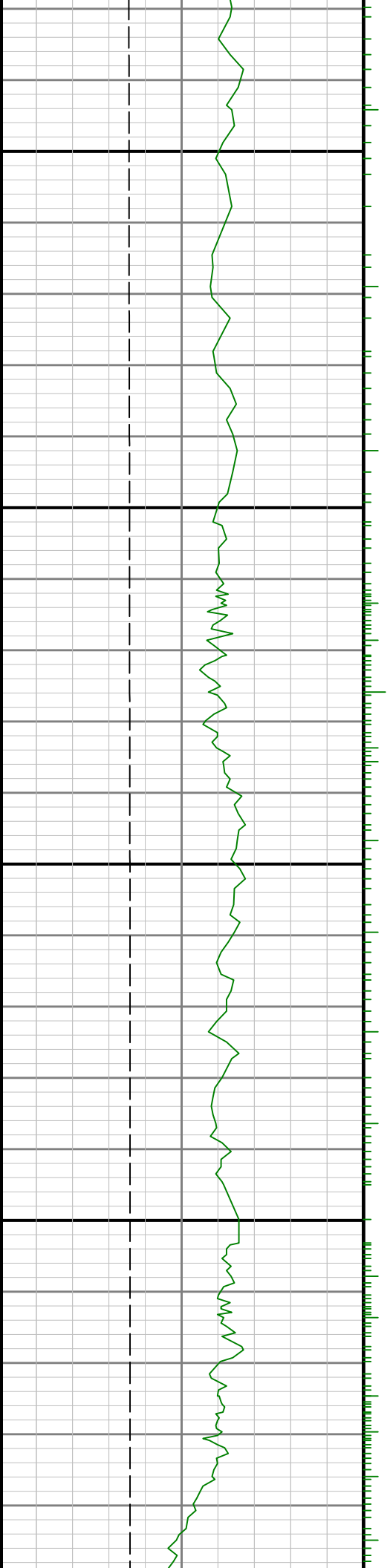


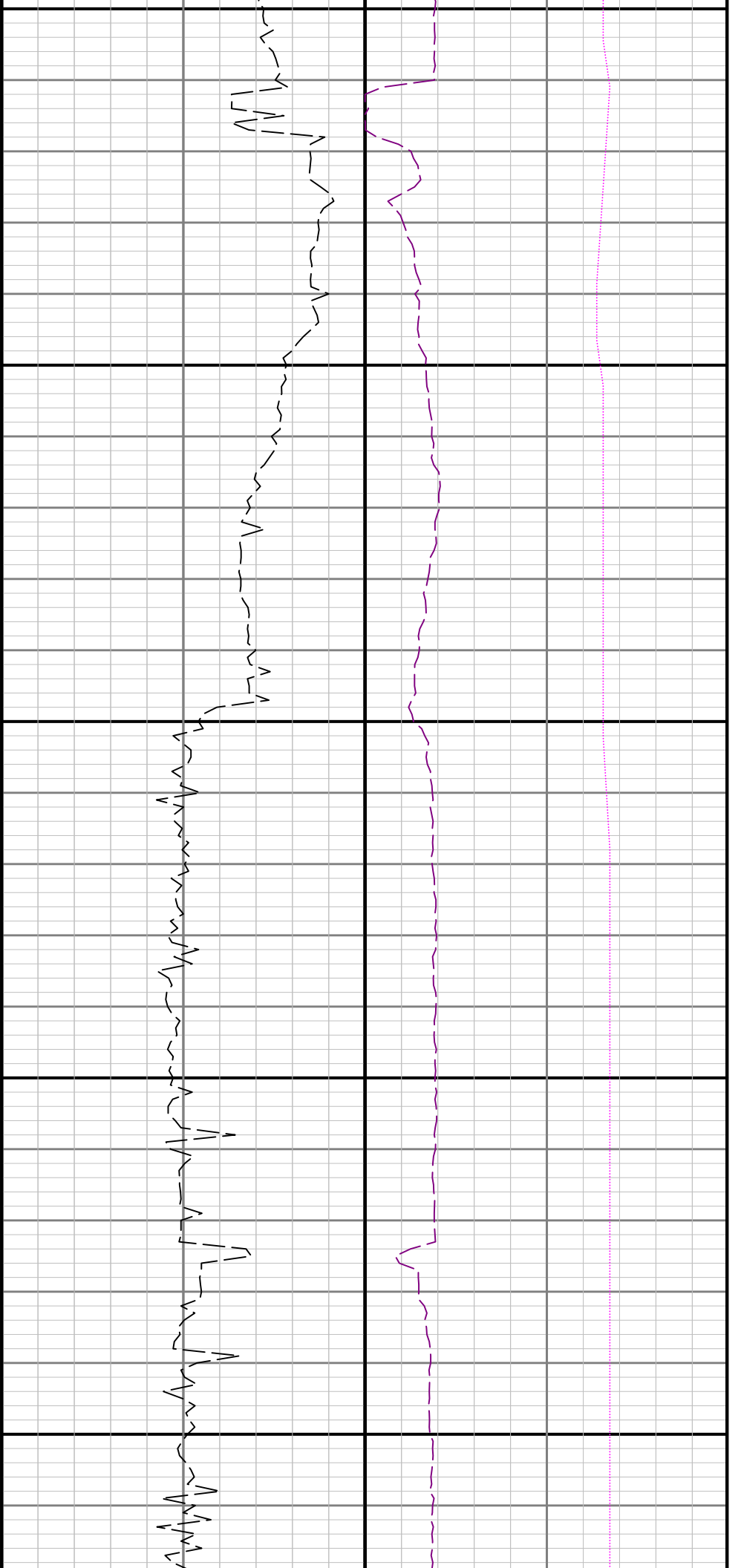




9200

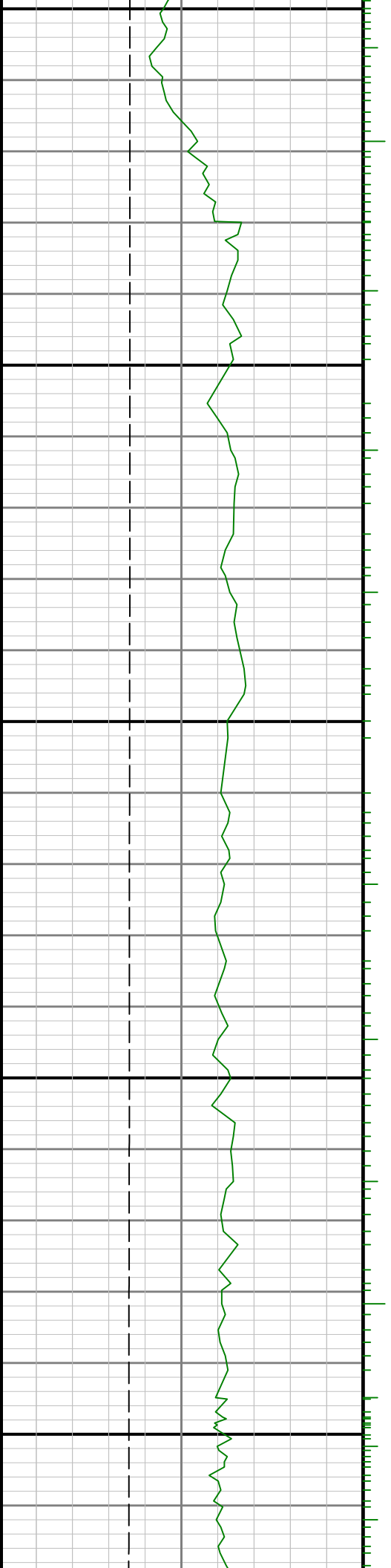
9300

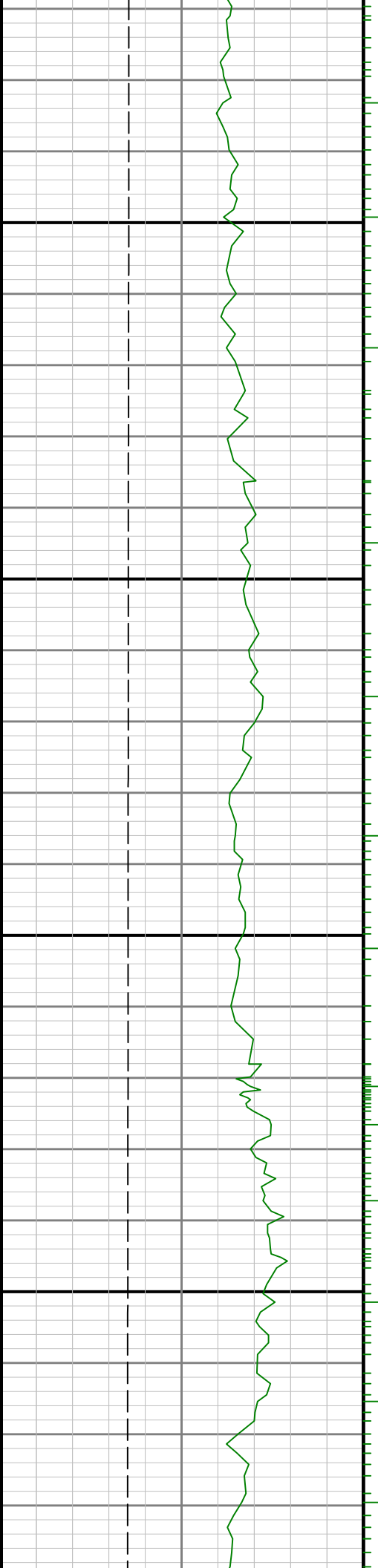




9400

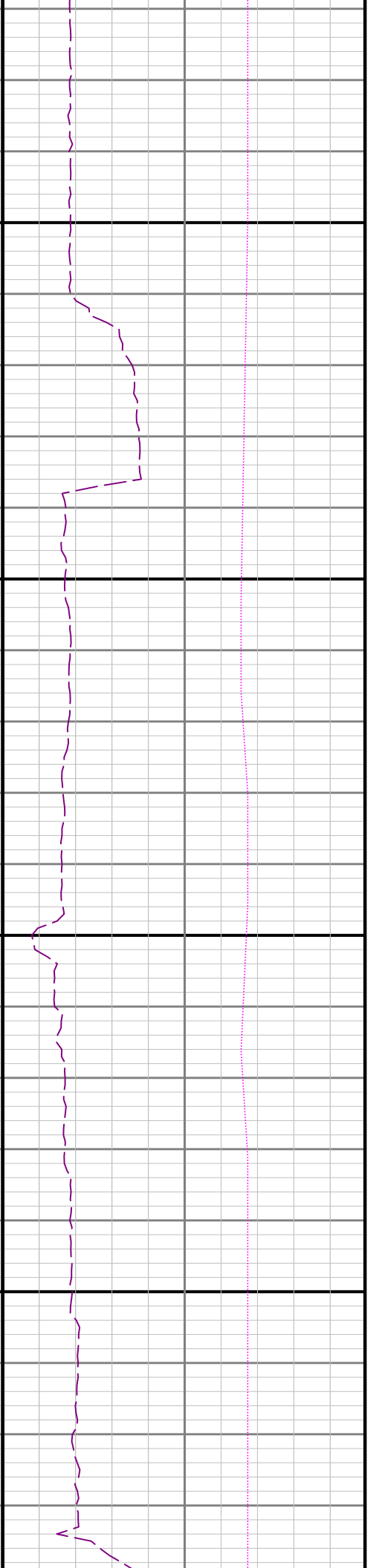
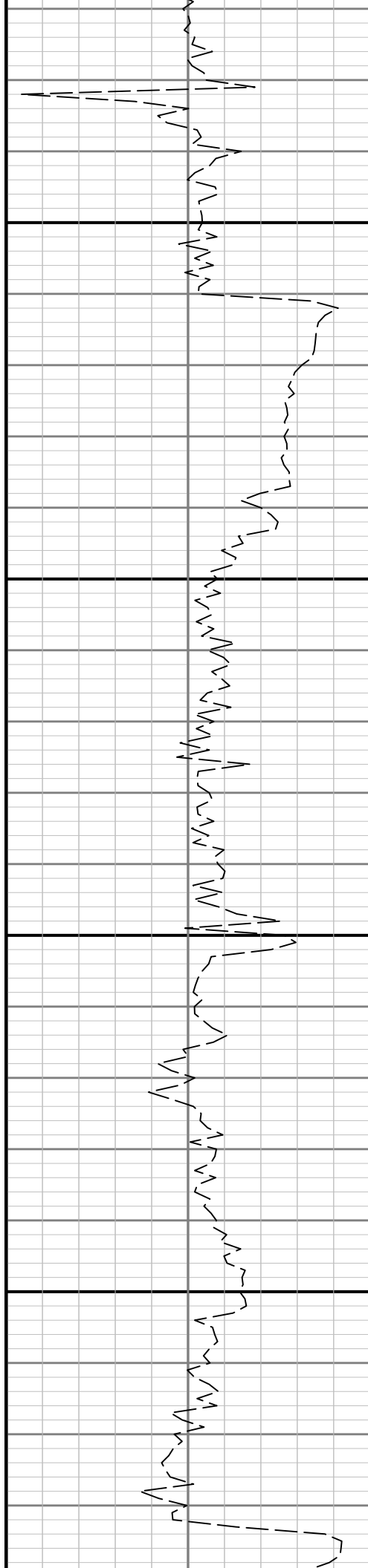
9500

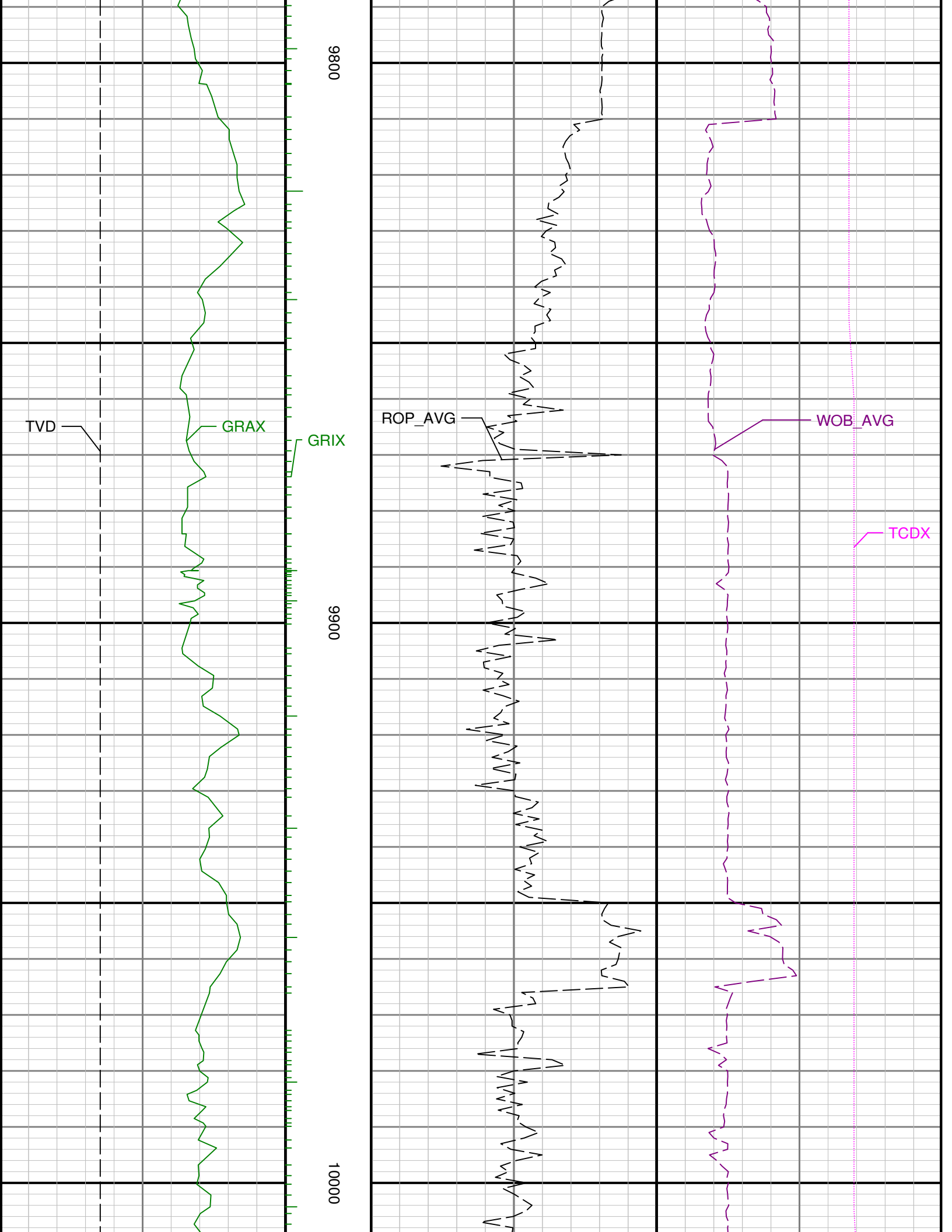


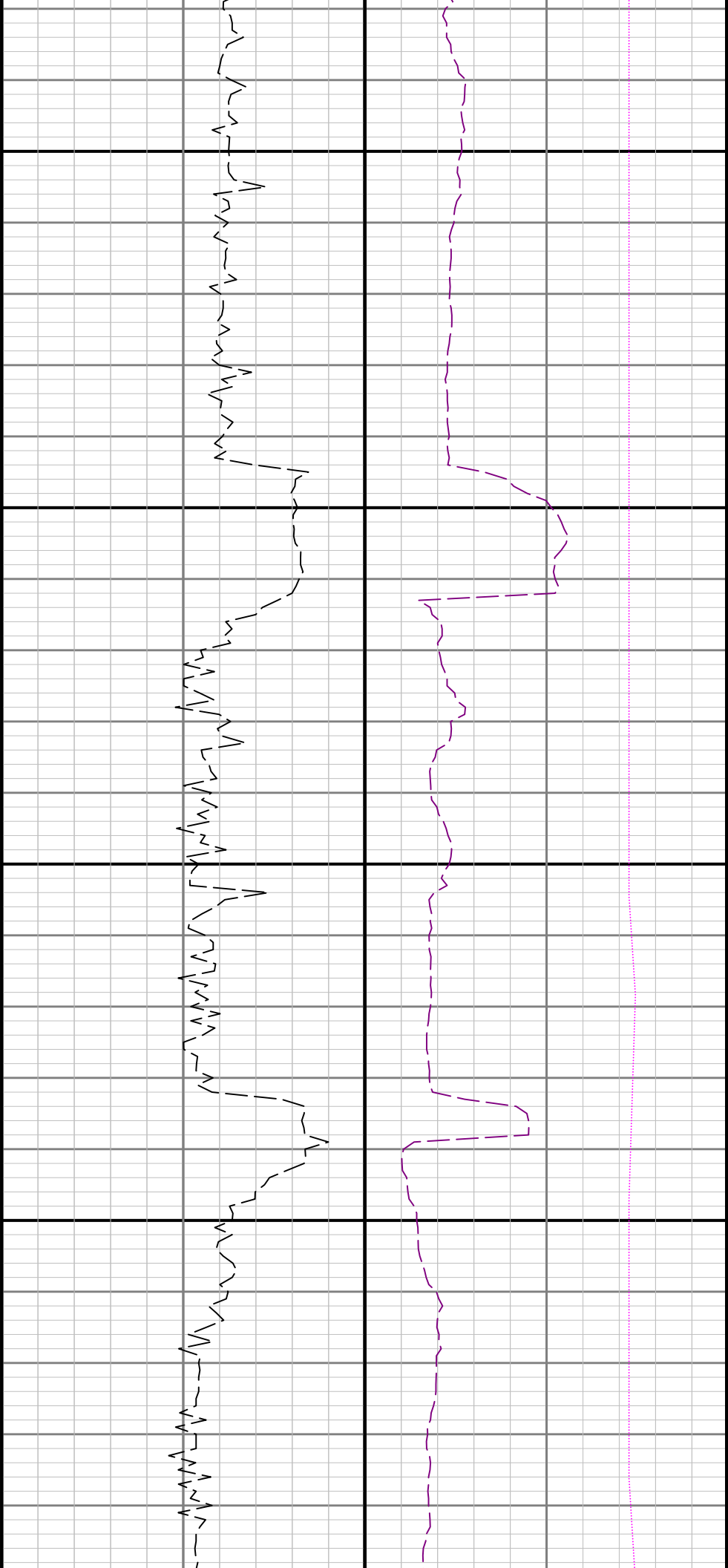


0096

9700

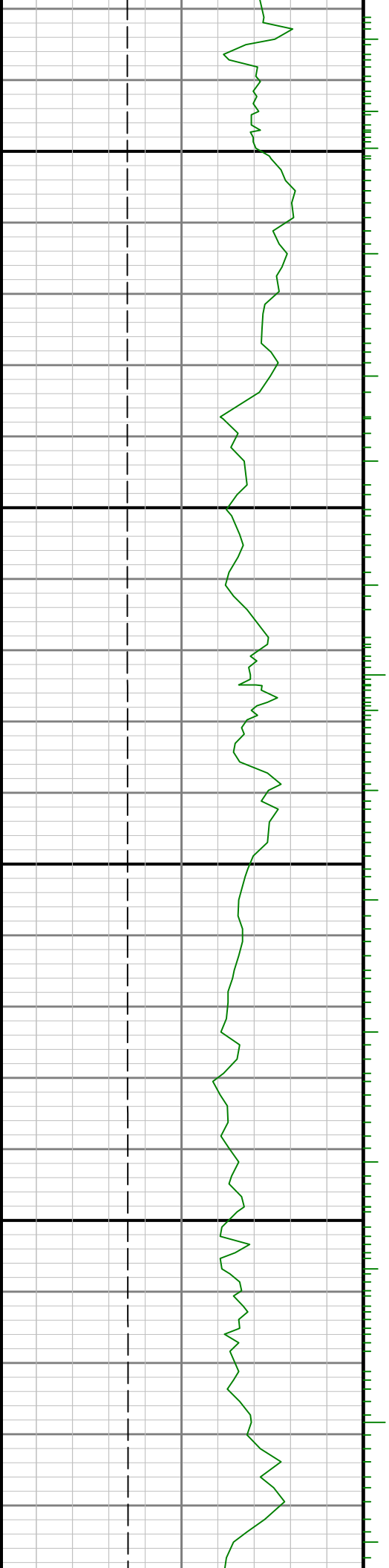


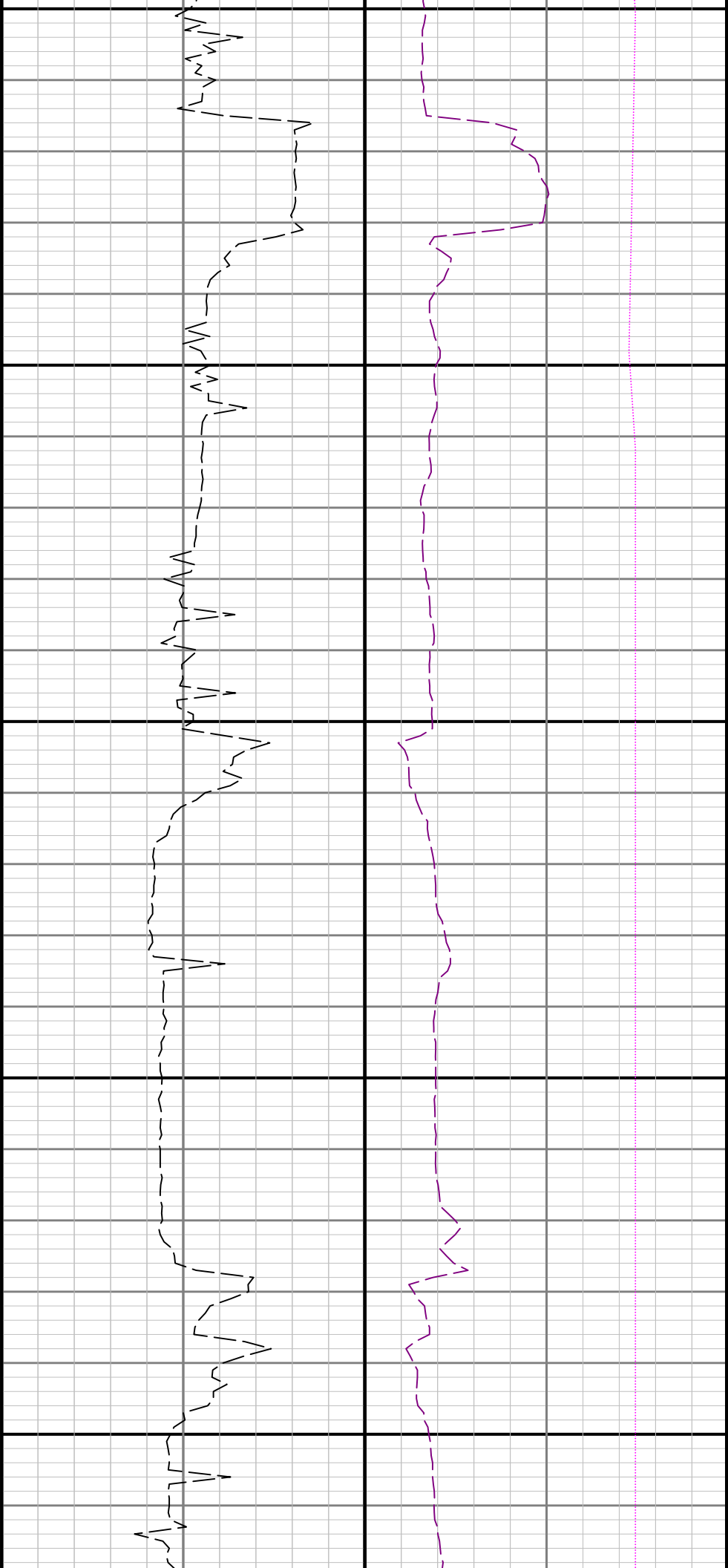




10300

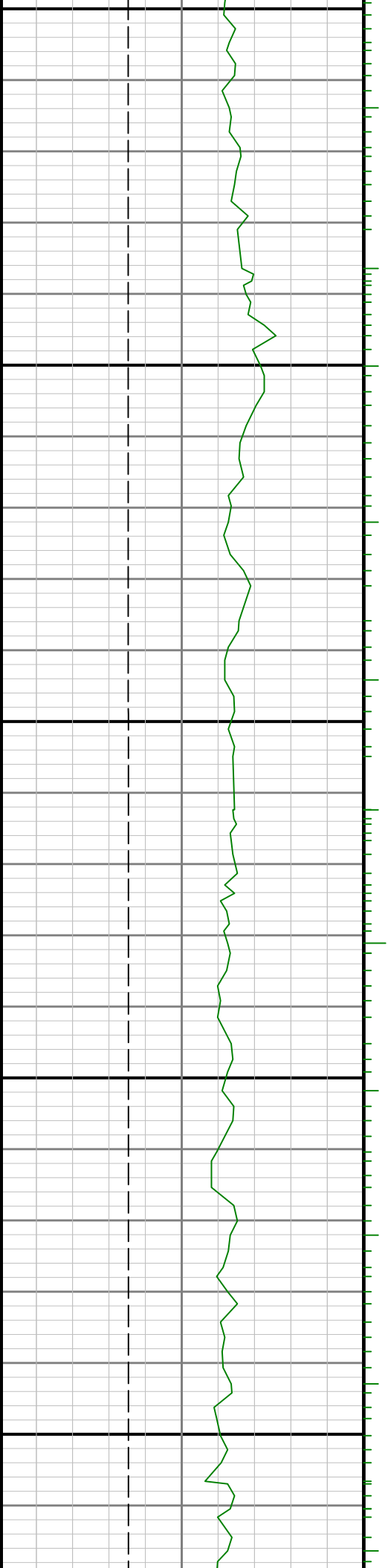
10400

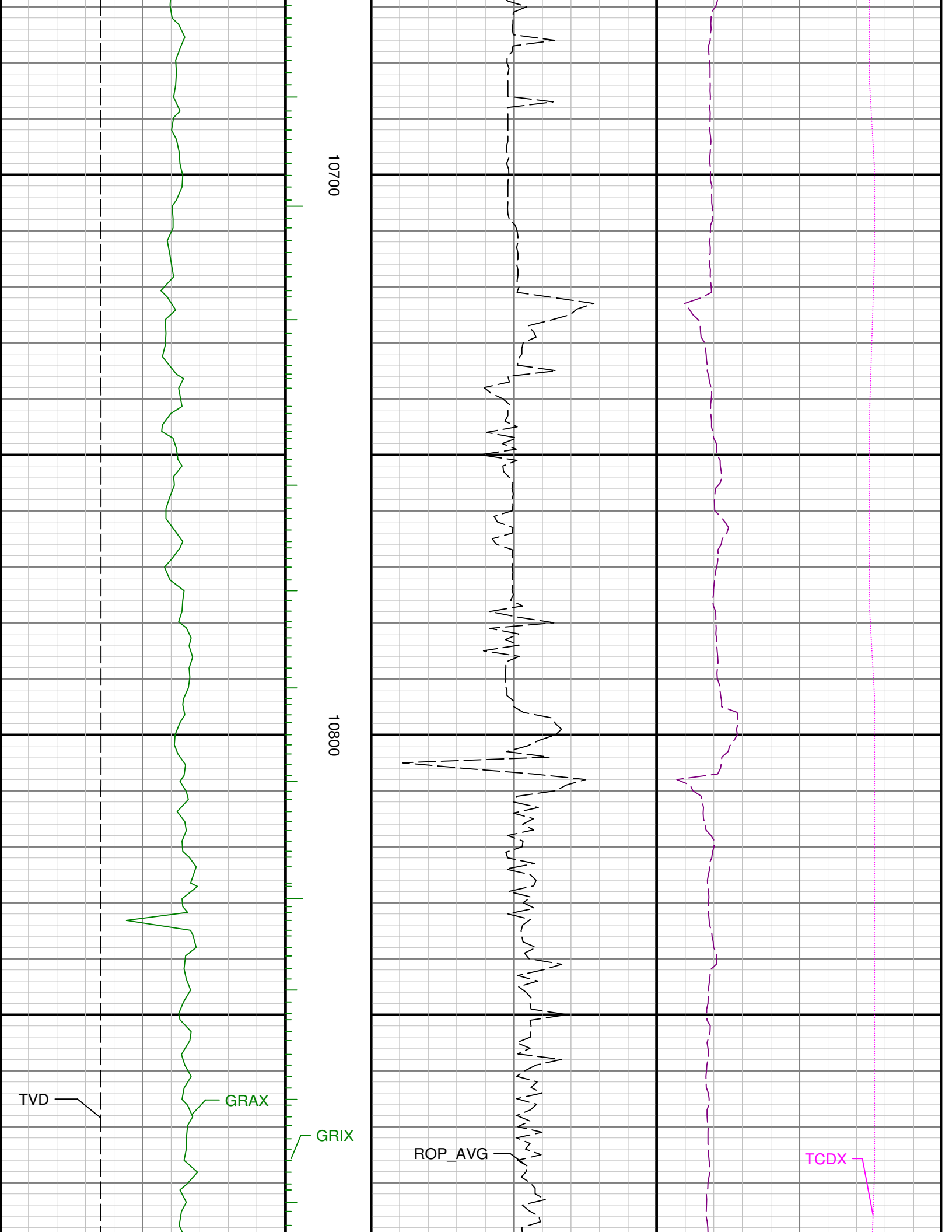


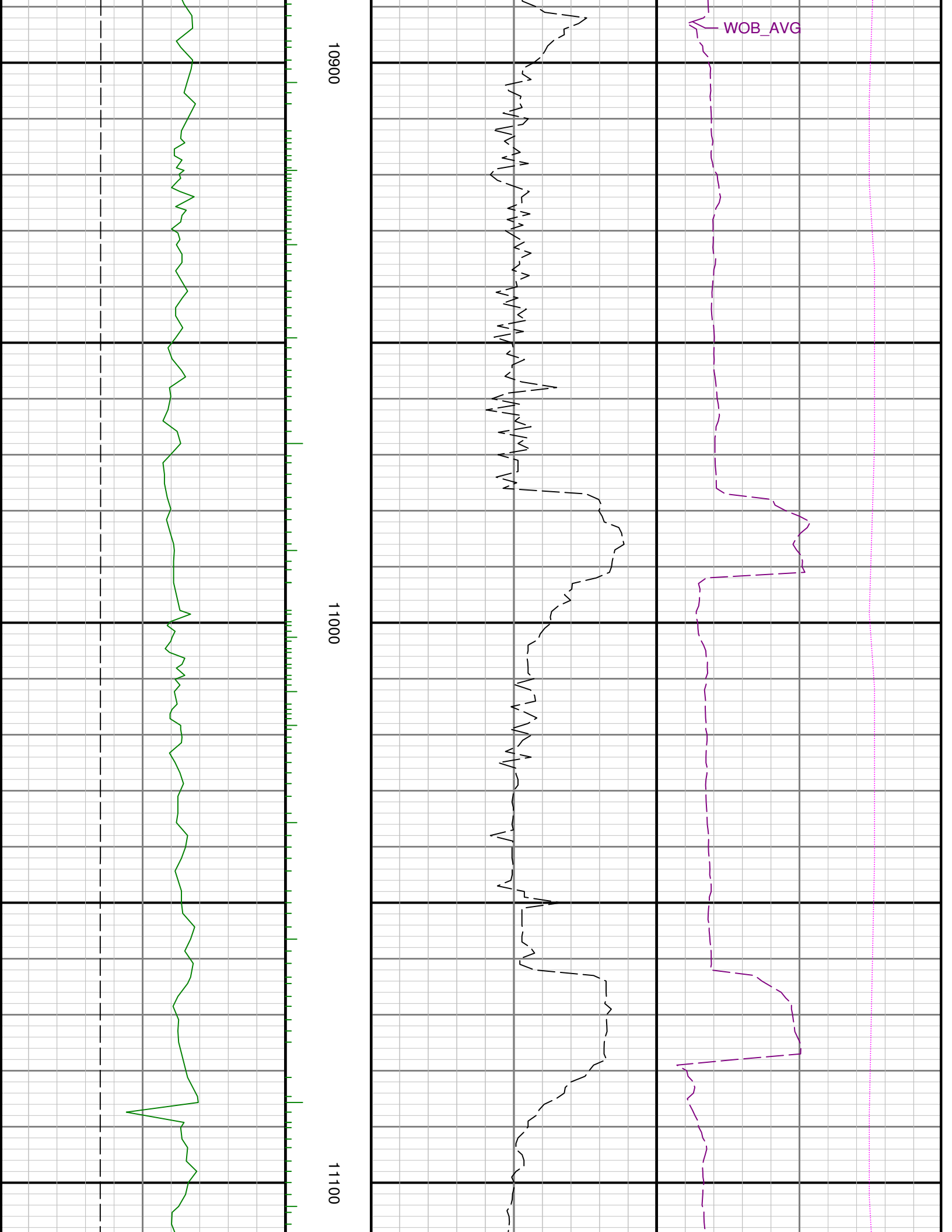


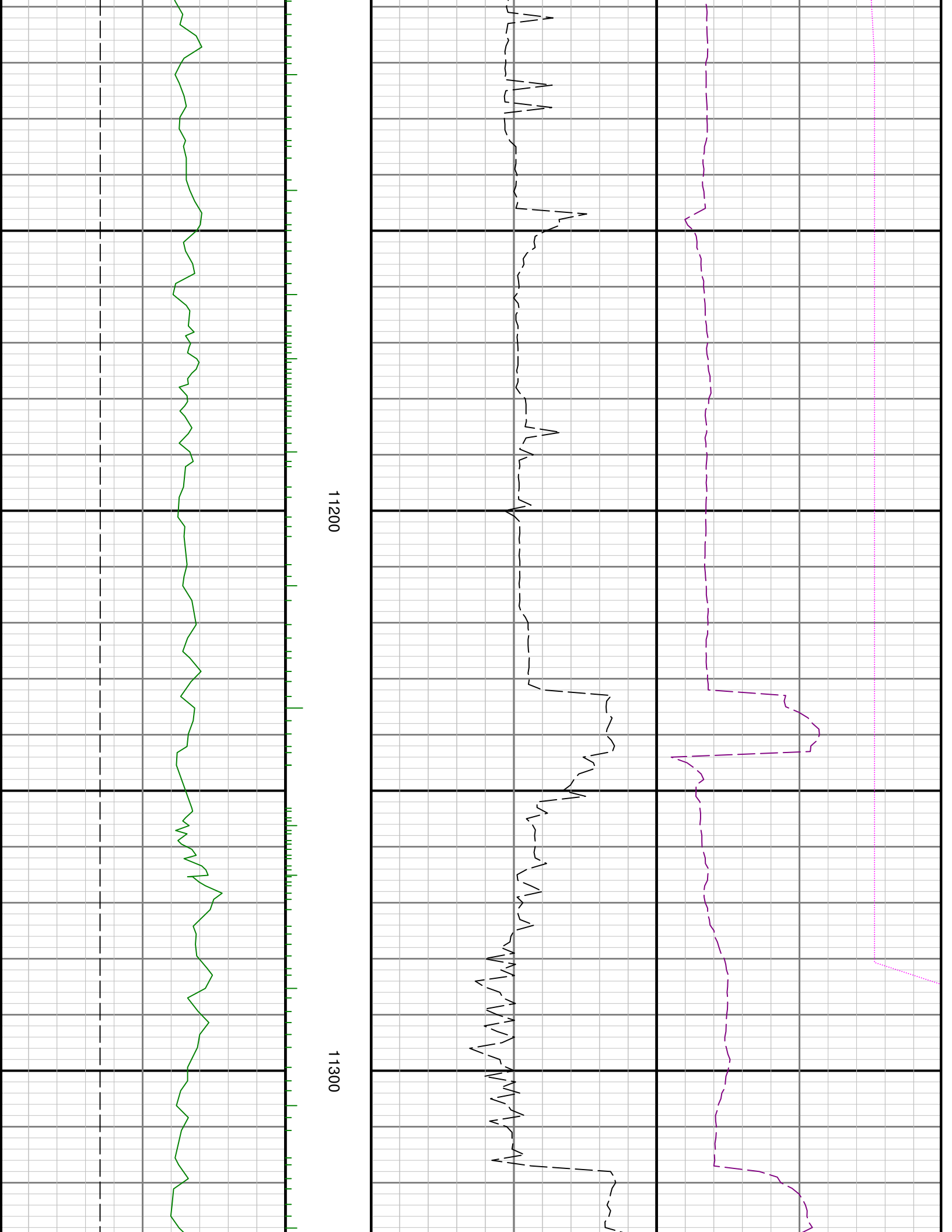
10500

10600





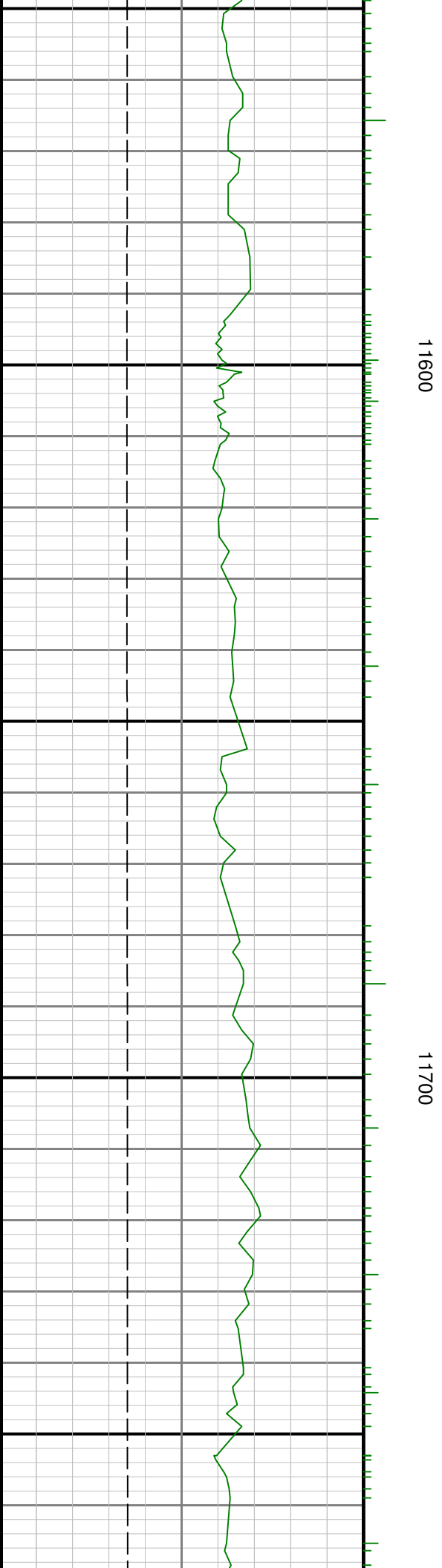
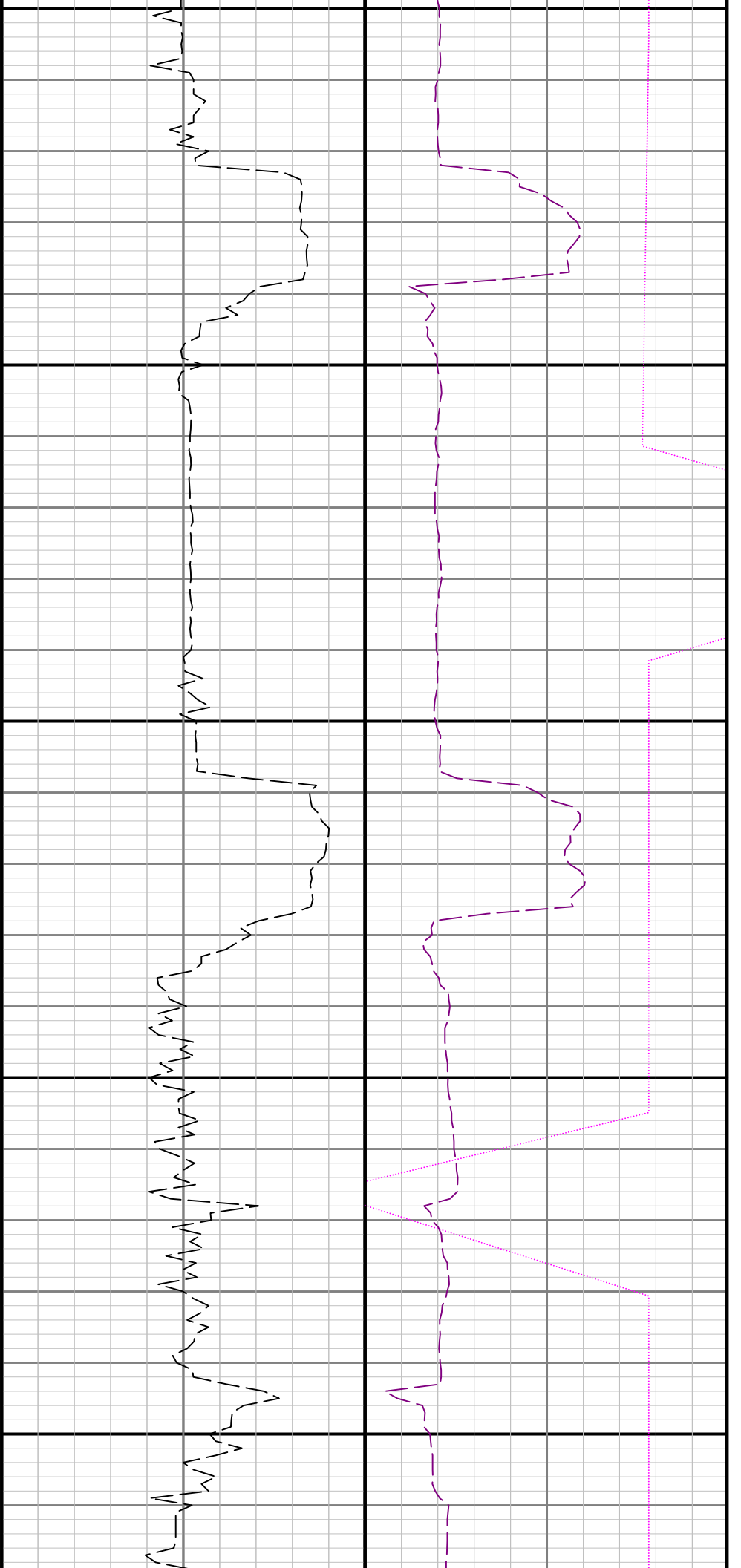


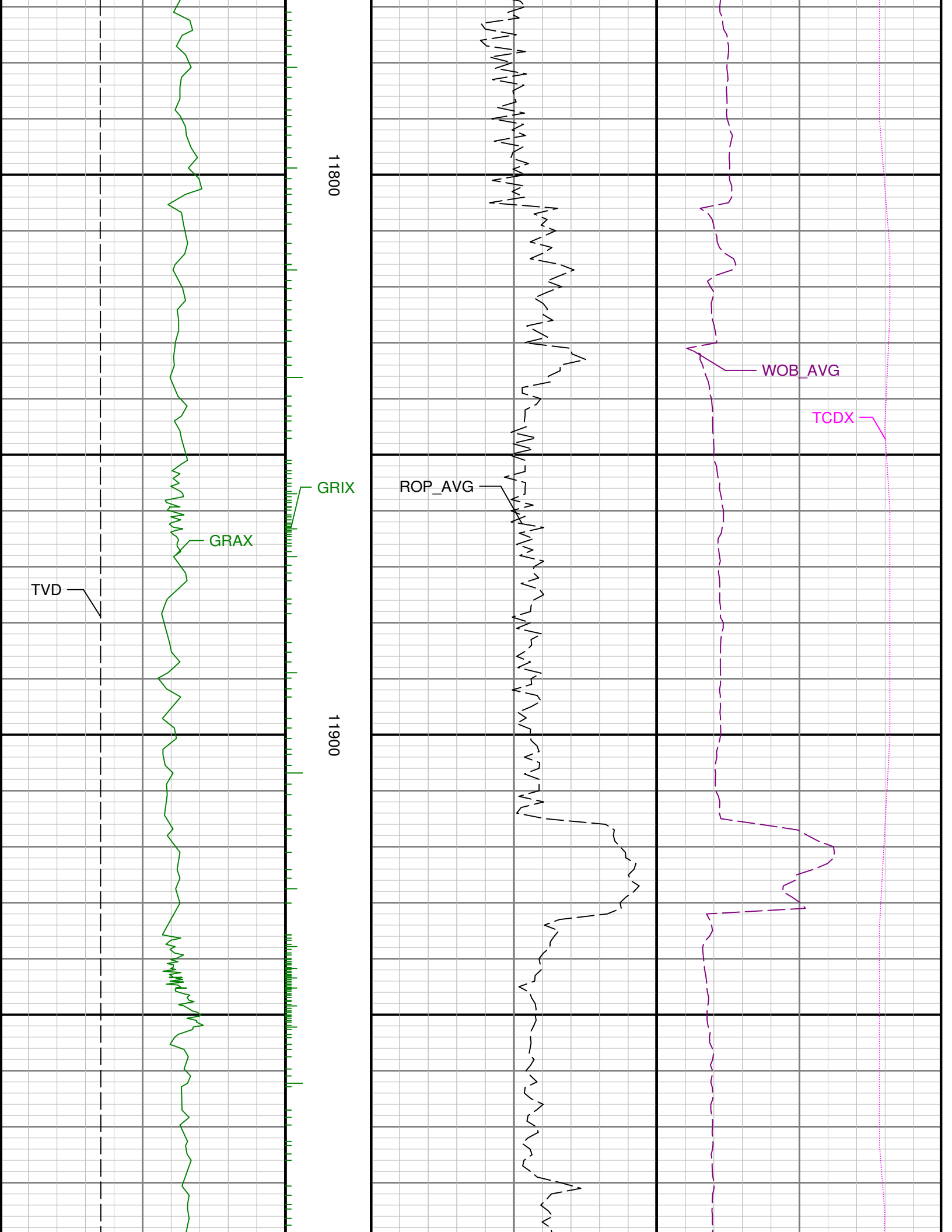


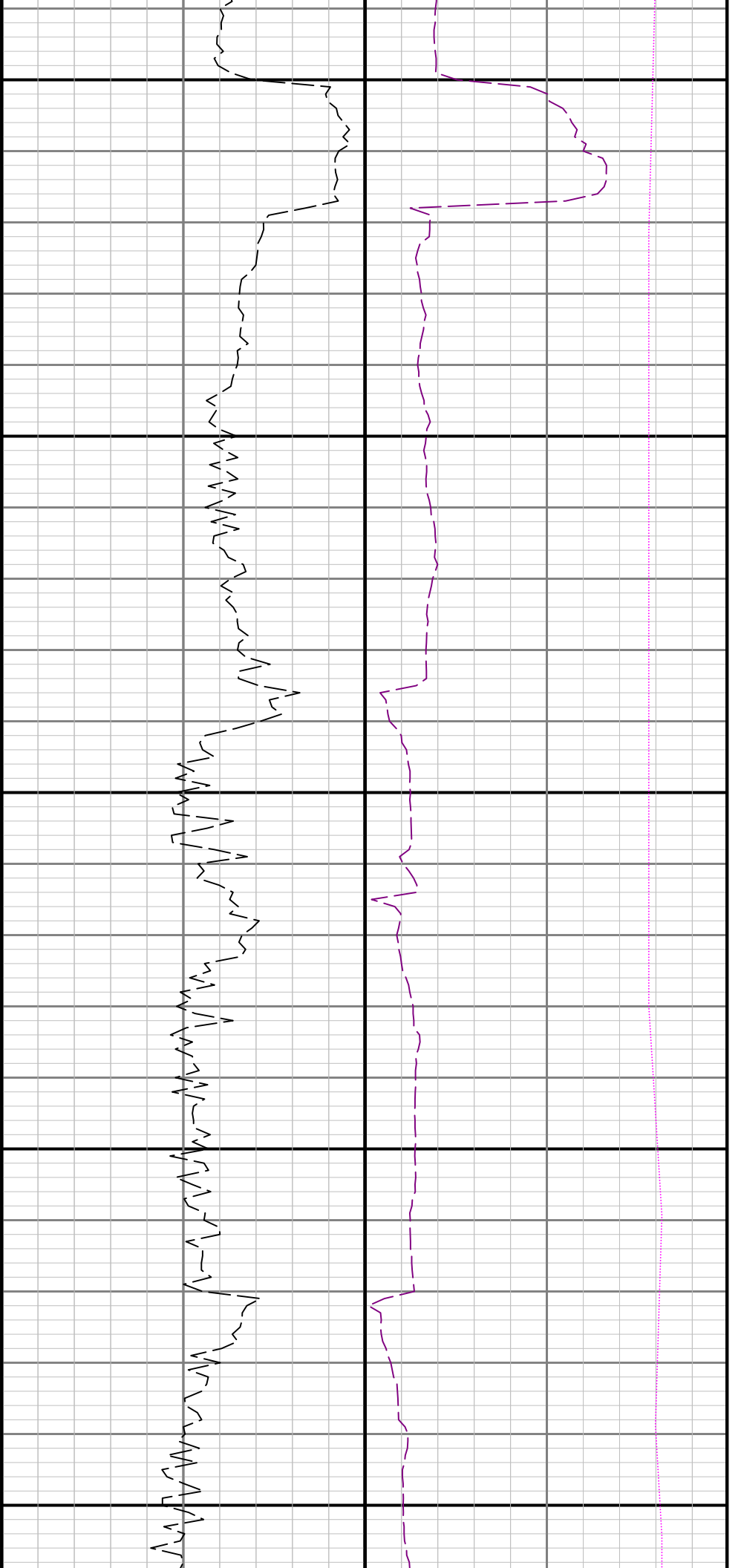


11400

11500



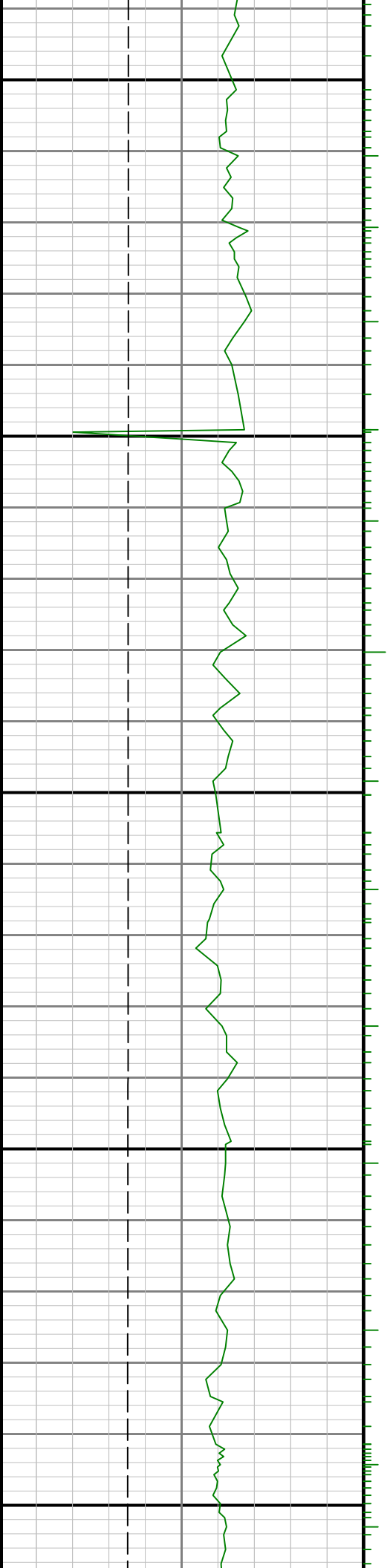


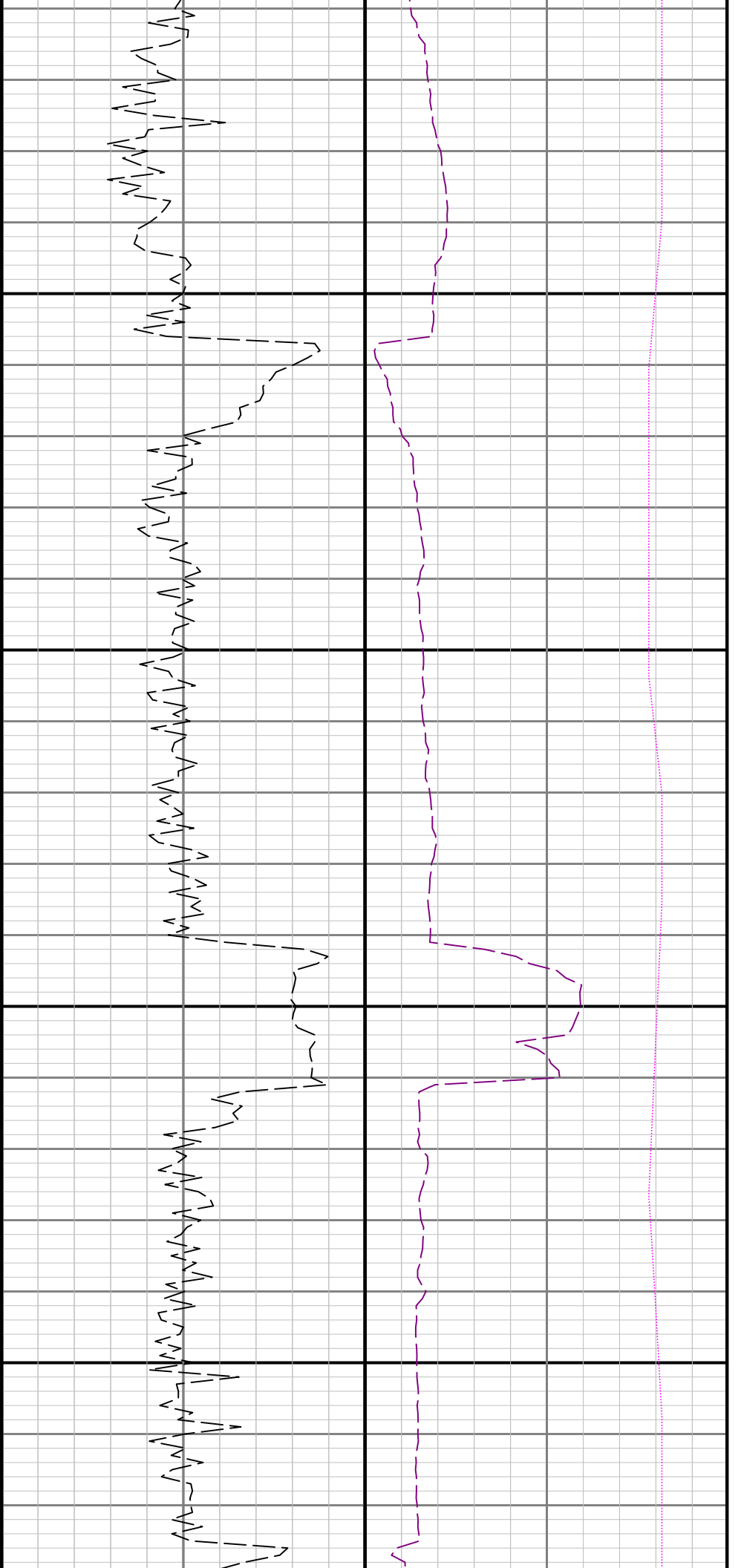


12000

12100

12200





12300

12400

