



Scale: 5" / 100'
Measured Depth Log

Well Name 05123380330000_Howard_15C_33HZ_MUD

Location NW/SE: SEC: 28 TWP: 1N 67W

State COLORADO

County WELD

Country U.S.A.

Rig Number XTREME 6

API Number 05123380330000

AFE # 2087570.DRL

Region DJ BASIN

Field WATTENBERG

Spud Date 12/13/2013

Surface Coordinates 1652' FSL 1443' FEL

Bottom Hole Coordinates 460' FFSL 2030' FFELL

Ground Elevation 5021'

K.B. Elevation 5037'

Logged Interval 7400

Formation CODELL

Type of Drilling Fluid LSND/ PHPA

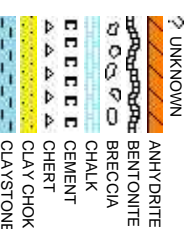
Company Anadarko

Address Granite Tower
1099 18th St. #
Denver, CO 802

Name ISAAC SMITH/I

Company ANADARKO PE

Address Columbine Logg
2385 S. Lipan S
Denver, CO 802



Operator

1800
202

Geologist

MARK RAIMO & JASON BEACH
ETROLEUM
jing, Inc.

street
223

Rock Types

| | | |
|----------------------|------------------|-----------------|
| CONGLOMERATE | MARLSTONE | SHALY SANDSTONE |
| DOLomite | METAMORPHIC | SHALY SILTSTONE |
| DOLomite | NO SAMPLE | SILTSTONE |
| DOLomite | SALT | TILL |
| GRANITE | SANDSTONE | TUFF |
| GYPsum | SALT-PEPPER SANe | WELDED TUFF |
| IGNEOUS | SHALE | |
| SIDERITE or LIMONITE | SHALE COLORED | |
| LIMESTONE | SHALE GRAY | |

Accessories

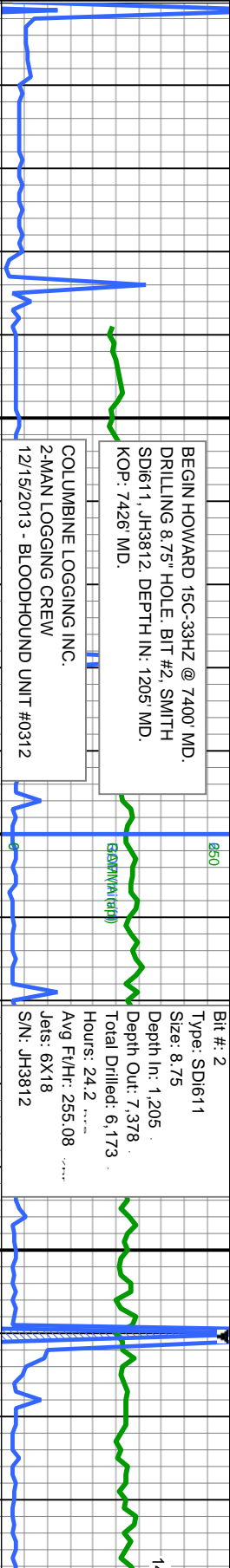
| | | | | | | | |
|----------------|--------------|-----------|----------------------|-----------------|-------------------|-----------------|---------------------------|
| Fossils | | GASTROPOD | | ARGILLITE GRAIN | | HEAVY MINERAL | |
| | INOCERAMUS | | B BENTONITE | | KAOLIN | | ANHYDRITE STRINGER |
| | ALGAE | | BITUMENOUS SUBSTANCE | | MARLSTONE | | COAL STRINGER |
| | AMPHIPORA | | BRECCIA FRAGMENTS | | MICACEOUS | | DOLOMITE STRINGER |
| | BELEMNITE | | CALCAREOUS | | MINERAL CRYSTALS | | GYPSUM STRINGER |
| | BIOCLASTIC | | CARBONACEOUS FLAKES | | NODULES | | LIMESTONE STRINGER |
| | BRACHIOPOD | | CHITDK | | PHOSPHATE PELLETS | | MARLSTONE (CALC) STRINGER |
| | BRYOZOA | | CHTLT | | PYRITE | | MARLSTONE (DOL) STRINGER |
| | CEPHALOPOD | | COAL - THIN BEDS | | SALT CAST | | MARLSTONE STRINGER |
| | CORAL | | DOLOMITIC | | SANDY | | SHALE STRINGER |
| | CRINOID | | FELDSPAR | | SILICEOUS | | SILTSTONE STRINGER |
| | ECHINOID | | FERRUGINOUS PELLETT | | SILTY | | |
| | FISH | | FERRUGINOUS | | TUFACEOUS | | |
| | FORAMINIFERA | | ANHYDRITIC | | | | |
| | FOSSIL | | ARGILLACEOUS | | GYPSIFEROUS | Stringer | |

Other Symbols

| | | | | | | | | |
|-----------------|-------------------|------------|-----------------------|-----------------|----------------------|------------------------|----------------|----------|
| Oil Show | | P PINPOINT | | DST INTERVAL | | WIRELINE TESTED - LEFT | | E EARTHY |
| | V VUGGY | | FAULT | | WIRELINE TESTED - RT | | FX FINELYXLN | |
| | DEAD | | FORMATION TOP | | DRILL STEM TEST | | BS GRAINSTONE | |
| | EVEN | | GAS SHOW | | MN DEPTH | | L LITHOGRAPHIC | |
| | QUESTIONABLE | | OIL SHOW | | MN DEPTH | | MX MICROXLN | |
| | SPOTTED STAINING | | CONNECTION (UP) | Rounding | | | MS MUDSTONE | |
| | CONNECTION (DOWN) | | MN DEPTH (DOWN) | | ANGULAR | | PS PACKSTONE | |
| Porosity | | | NORMAL FAULT | | ROUNDED | | WS WACKSTONE | |
| | E EARTHY | | OVERTURNED STRATA | | SUBANG | | | |
| | FENESTRAL | | REVERSE FAULT | | F SUBRND | | | |
| | F FRACTURE | | CASING | Textures | | | M MODERATE | |
| | INTERCRYSTALLINE | | SIDEWALL CORE (LEFT) | | P POOR | | | |
| | INTEROOLITIC | | SIDEWALL CORE (RIGHT) | | C CHALKY | | W WELL | |
| | MOLDIC | | SLIDE | | CX CRYPTOXLN | | | |
| | ORGANIC | | CORE - LOST | | | | | |
| | CORE - RECOVERED | | SURVEY | | | | | |

Slide/Rotate

ROP
ROF
GAMMA



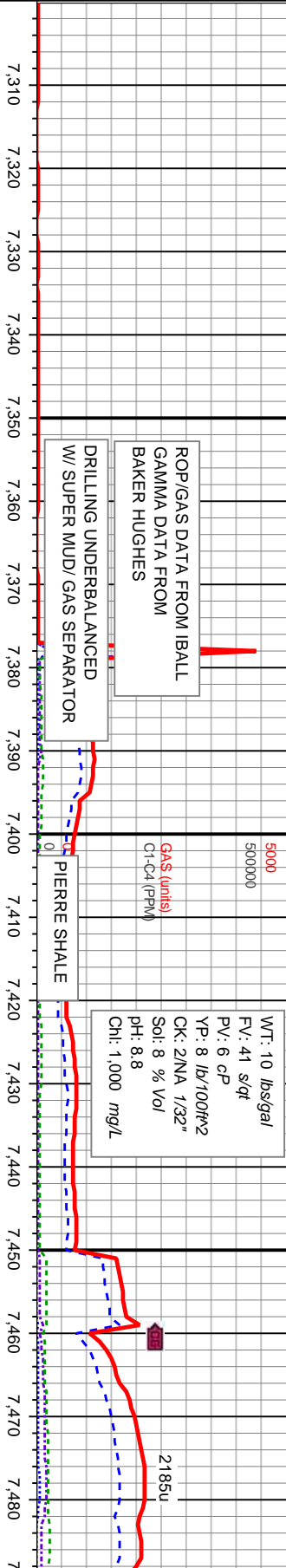
BEGIN HOWARD 15C-33HZ @ 7400' MD.
DRILLING 8.75" HOLE, BIT #2, SMITH
SD611, JH3812, DEPTH IN: 1205' MD.
KOP: 7426 MD.

COLUMBINE LOGGING INC.

2-MAN LOGGING CREW
12/15/2013 - BLOODHOUND UNIT #0312

Bit #: 2
Type: SD611
Size: 8.75
Depth In: 1,205
Depth Out: 7,378
Total Drilled: 6,173
Hours: 24.2
Avg Ft/Hr: 255.08
Jets: 6X18
S/N: JH3812

Total Gas & Chromatograph
GAS
C1
C2
C3
C4



ROP/GAS DATA FROM IBALL
GAMMA DATA FROM
BAKER HUGHES

DRILLING UNDERBALANCED
W/ SUPER MUD/ GAS SEPARATOR

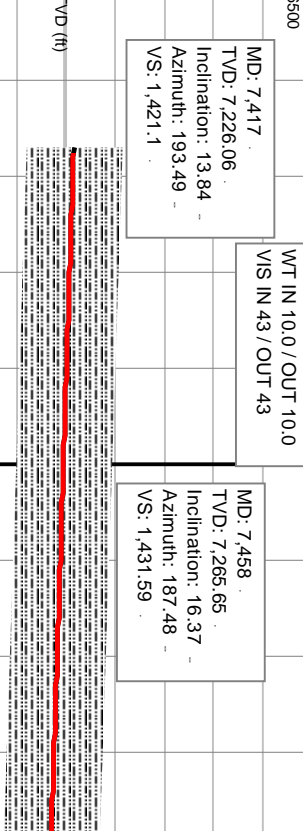
PIERRE SHALE

WT: 10 lbs/gal
FV: 41 s/qt
PV: 6 cP
YP: 8 lb/100ft²
CK: 2N/A 1/32"
Sol: 8 % Vol
pH: 8.8
Chl: 1,000 mg/L

% Lith



Well Bore
TVD



50' SAMPLE INTERVALS
50' SAMPLE DESCRIPTIONS

SLTY SH: med gy-dk gy, pily-sb blk/y,
frm-sft, sb rnd-sb ang, mod fri, si calc,

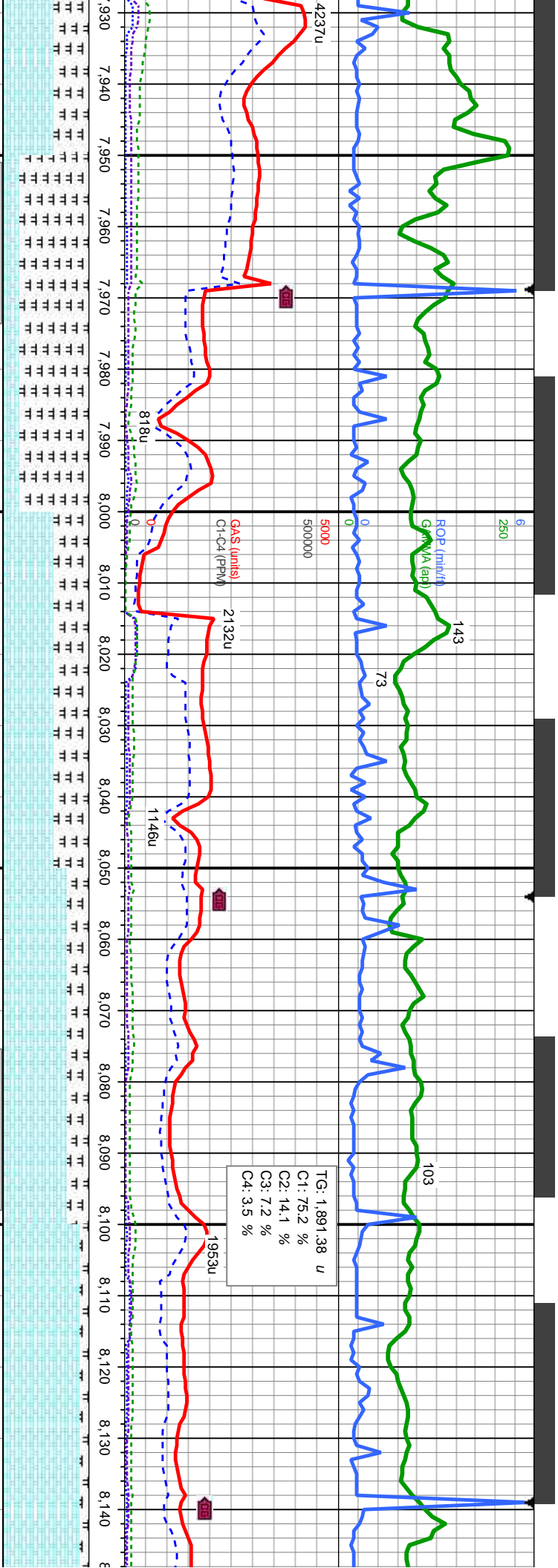
SLTY SH: med gy-dk gy, pily-sb blk/y,
frm-sft, sb rnd-sb ang, mod fri, si calc,

Oil Show

83
66
50
33
16

Images





MD: 7.968
TVD: 7.662.13
Inclination: 60.1
Azimuth: 181.37
VS: 1.730.81

MD: 8.010
TVD: 7.681.74
Inclination: 64.24
Azimuth: 181.08
VS: 1.767.93

MD: 8.053
TVD: 7.699.49
Inclination: 66.97
Azimuth: 181.49
VS: 1.807.07

MD: 8.095
TVD: 7.714.97
Inclination: 69.77
Azimuth: 181.96
VS: 1.846.09

MD: 8.138
TVD: 7.728.72
Inclination: 72.93
Azimuth: 182.13
VS: 1.886.8

not, sb blk-y-sb ply,
calc: MRLST:
med-dk gy-gy brn, sb ply-blky, mod sft-frm, sb
arg-sily, calc, v rr bent, tr bent, difse hvy sting wi
wi mod-g bl-wh cut, thn bri bl-wh resdl ring

CHK: lt-med gy,lt-med brn, mot, sb blk-y-sb ply,
sft-sl frm, fri, chky-sb wxy,v calc: MRLST:
med-dk gy-gy brn, sb ply-blky, mod sft-frm, sb
arg-sily, calc, v rr bent, tr bent, difse hvy sting
wi mod-g bl-wh cut, thn bri bl-wh resdl ring

CHK: lt-med gy,lt-med brn, mot, sb blk-y-sb
ply, sft-sl frm, fri, chky-sb wxy,v calc:
MRLST: med-dk gy-gy brn, sb ply-blky, mod
sft-frm, sb arg-sily, calc, v rr bent, rr inoc, tr
bent, difse hvy sting wi mod-g bl-wh cut, thn
bri, bl-wh resdl ring

CHK: lt-med gy,lt-med brn, mot, sb blk-y-sb ply,
sft-sl frm, fri, chky-sb wxy,v calc: MRLST:
med-dk gy-gy brn, sb ply-blky, mod sft-frm, sb
arg-sily, calc, v rr bent, tr bent, difse hvy sting
wi mod-g bl-wh cut, thn bri bl-wh resdl ring

CHK: lt-med gy,lt-med brn, mot, sb blk-y-sb ply,
sft-sl frm, fri, chky-sb wxy,v calc: MRLST:
med-dk gy-gy brn, sb ply-blky, mod sft-frm, sb
arg-sily, calc, tr bent, difse hvy sting wi mod-g
bl-wh cut, thn bri bl-wh resdl ring

CURVE TD REACHED AT 8425 MD
ON 12/20/2013 AT 12:34 PM

Bit #: 3

Type: SD611

Size: 8.75

Depth In: 7.378

Depth Out: 8.425

Total Drilled: 1,047

Hours: 12.2

Avg Ft/Hr: 85.82

Jets: 6X18

S/N: JH7090

BEGIN DRILLING LATERAL ON
12/23/13 AT TIME 5:50 AM.
6.25" HOLE W/ BIT #4, VAREL,
VS5130. DEPTH IN: 8425 MD.

ROP SCALE
CHANGE

ROP (min/hr)

46

37

30

20

10

0

4

ROP (min/hr)

46

37

30

20

10

0

4

ROP (min/hr)

46

37

30

20

10

0

4

ROP (min/hr)

46

37

30

20

10

0

GASBUSTER
FREEZING

1933u

3993u

2777u

705u

1547u

4445u

4474u

60000

60000

60000

60000

60000

60000

60000

60000

60000

60000

60000

60000

60000

TG: 4,826.7 u
C1: 68.1 %
C2: 17.6 %
C3: 9.7 %
C4: 4.6 %

1933u

3993u

2777u

705u

1547u

4445u

4474u

60000

60000

60000

60000

60000

60000

60000

60000

60000

60000

60000

60000

WT IN 9.0/ OUT 9.0
S IN 43/ OUT 43

PROJECTION TO BIT

MD: 8.381
TVD: 7,769.41
Inclination: 85.39
Azimuth: 181.1
VS: 2,125.73

MD: 8.425
TVD: 7,771.49
Inclination: 89.18
Azimuth: 180.14
VS: 2,169.67

MD: 8.468
TVD: 7,771.96
Inclination: 89.81
Azimuth: 180.17
VS: 2,212.67

100' SAMPLE INTERVALS
100' SAMPLE DESCRIPTIONS

MD: 8.554
TVD: 7,772.78
Inclination: 89.1
Azimuth: 179.52
VS: 2,298.66

LS: crm-offwht lt brn, pily-flky ip, frm-brlt,
cyxln-mcxln, v sl arg, calc; MRLST: aa: SHY
SLTST: lt gy-med gy, sb-bky-sb-ply, med-v frm,v
calc, mod sting bl-wh mky cut; thn bri bl-wh
resd ring

LS: crm-offwht lt brn, pily-flky ip, frm-brlt,
cyxln-mcxln, v sl arg, calc; mod sting
bl-wh mky cut; thn bri bl-wh resd ring

LS: crm-offwht lt brn, pily-flky ip, frm-brlt, cyxln-mcxln, v sl
arg, calc; mod sting bl-wh mky cut; thn bri bl-wh resd ring

rm, pily-flky ip, frm-brlt,
gy, calc; aa SHY SLTST: lt
v-sb-ply, med-v frm,v calc,
mky cut; thn bri bl-wh resd ring

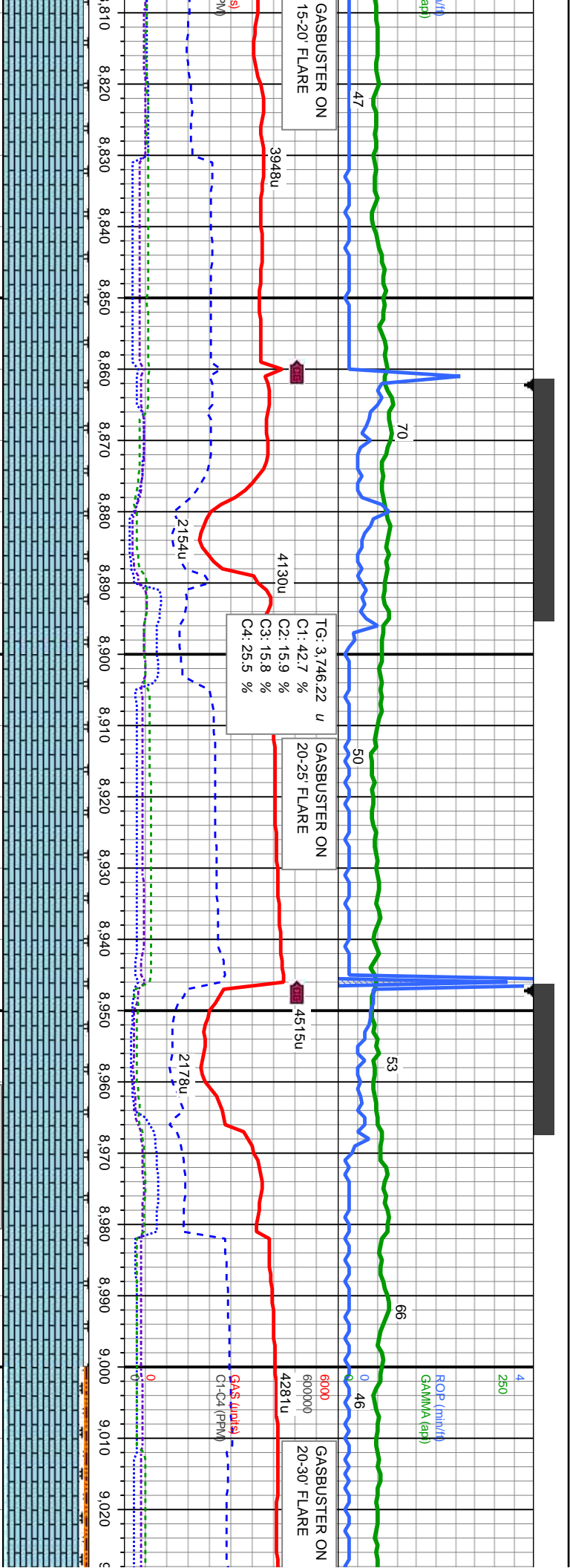


GASBUSTER ON
10-15' FLARE

MD: 8,724
TVD: 7,773.94
Inclination: 89.78
Azimuth: 176.25
VS: 2,468.54

MD: 8,8
TVD: 7,
Inclinati
Azimutr
VS: 2,5

LS: crm-otwht lt brn, pty-flky lp, frm-brlt, cyxln-mchl, v sl arg, calc, abnt bent; MRLST: med-dk gy-gy brn, sb pty-blky, mod slt-frm, sb arg-sltly, calc; mod stimg bl-wh mky cut; thn bri bl-wh resd ring



09
MD: 8.894
TVD: 7,775.13
Inclination: 88.61
Azimuth: 175.68
VS: 2.638.34

MD: 8.894
TVD: 7,776.76
Inclination: 89.19
Azimuth: 178.48
VS: 2.638.22

MD: 8.980
TVD: 7,778.07
Inclination: 89.07
Azimuth: 180.85
VS: 2.724.2

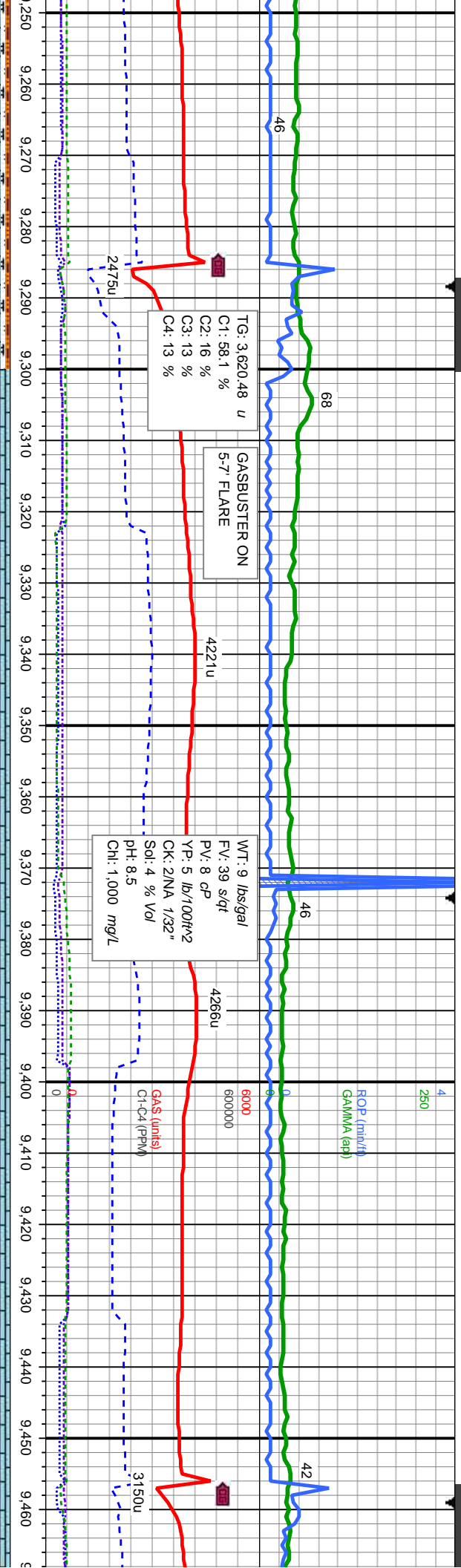
WT IN 9.1/ OUT 9.1
VIS IN 38/ OUT 38

LS: crm-offwht lt brn, pty-filky ip, frm-brit, cyxln-mcxln, v sl arg, calc.
abt bent; MRLST: med-dk gy-gy brn, sb pty-blky, mod sft-frm, sb arg-sfly, calc; tr SHY SLTST; mod stng bl-wh mky cut; thn bri bl-wh resal ring

LS: crm-offwht lt brn, pty-filky ip, frm-brit, cyxln-mcxln, v sl arg, calc, abnt bent; MRLST: med-dk gy-gy brn, sb pty-blky, mod sft-frm, sb arg-sfly, calc; tr SHY SLTST; mod stng bl-wh mky cut; thn bri bl-wh resal ring

LS: crm-offwht lt brn, pty-filky ip, frm-brit, cyxln-mcxln, v sl arg, calc, abnt bent; MRLST: med-dk gy-gy brn, sb pty-blky, mod sft-frm, sb arg-sfly, calc; tr SHY SLTST; mod stng bl-wh mky cut; thn bri bl-wh resal ring





WT IN 9.0/ OUT 9.0
VIS IN 39/ OUT 39

MD: 9.321
TVD: 7,779.63
Inclination: 89.01
Azimuth: 180.62
VS: 3.065.14

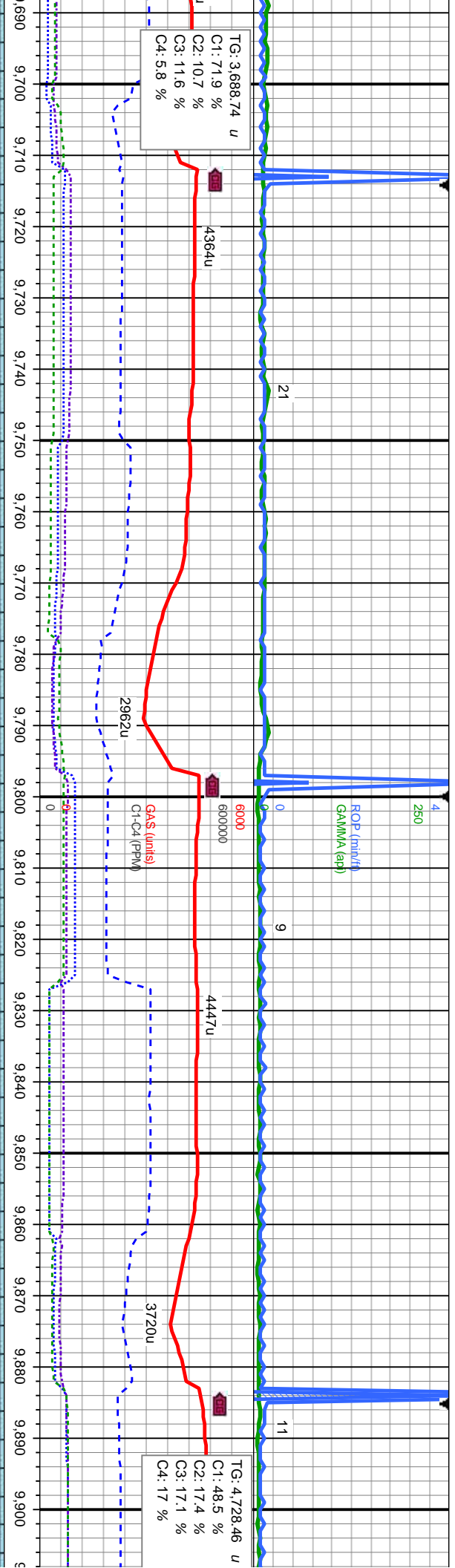
MD: 9.406
TVD: 7,780.57
Inclination: 89.72
Azimuth: 180.56
VS: 3.150.13

rit, cyxln-mcxln, v sl arg, calc: CHK:
gy, sb-biky-sb-pty, med-v frm, v calc,
mky cut, thn bri bl-wh resd ring

LS: crm-offwht lt brn, pily-fiky ip, frm-brt, cyxln-mcxln, v sl arg, calc:
com bent, mod-hvy, difse stng bl-wh mky cut, thn bri bl-wh resd ring

LS: crm-offwht lt brn, pily-fiky ip, frm-brt, cyxln-mcxln, v sl arg, calc:
tr bent, mod-hvy, difse stng bl-wh mky cut, thn bri bl-wh resd ring





WT IN 8.9/ OUT 8.9
VIS IN 36/ OUT 36

MD: 9.747
TVD: 7.784.4
Inclination: 89.1
Azimuth: 180.16
VS: 3.491.03

TVD (ft)

MD: 9.833
TVD: 7.785.24
Inclination: 89.78
Azimuth: 179.93
VS: 3.577.02

WT IN 8.9/ OUT 8.9
VIS IN 35/ OUT 35

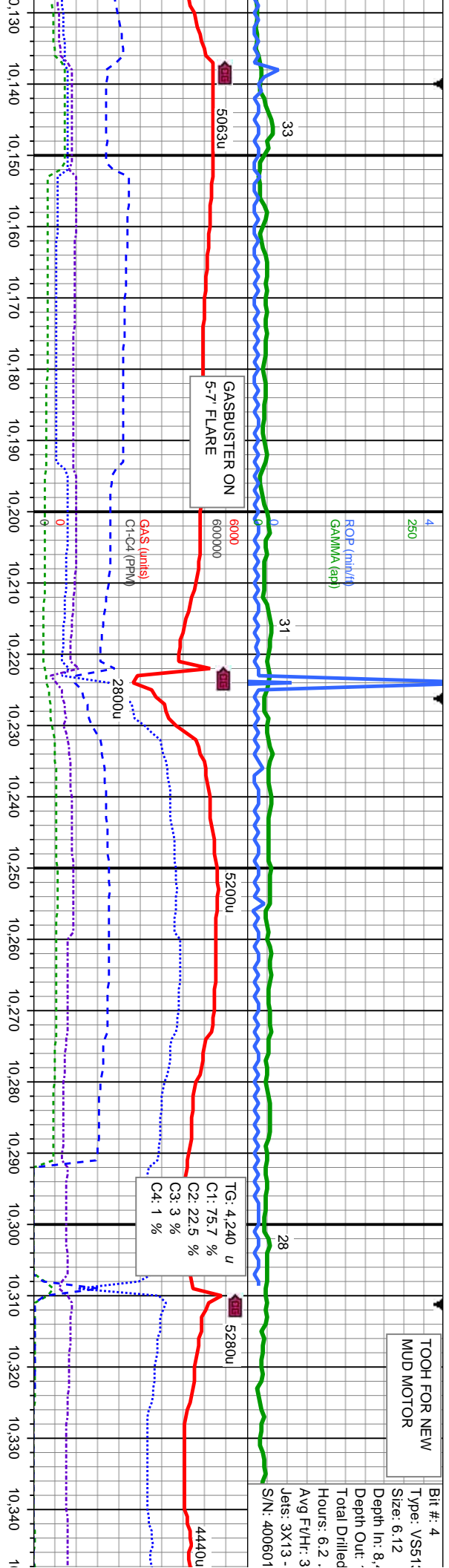
LS: crm-offwht lt brn, pily-rlky ip, frm-brt, cyxln-mcxln, v sl arg, calc,
rr bent, mod-hvy, difse sting bl-wh mky cut, thn bri bl-wh resd ring

LS: crm-offwht lt brn, pily-rlky ip, frm-brt, cyxln-mcxln, v sl arg, calc,
rr bent, mod-hvy, difse sting bl-wh mky cut, thn bri bl-wh resd ring



TOOH FOR NEW
MUD MOTOR

Bit #: 4
Type: VS51;
Size: 6.12
Depth In: 8.4
Total Drilled
Hours: 6.2
Avg FV/Hr: 3
Jets: 3X13 -
S/N: 400601



MD: 10.173
TVD: 7.786.79
Inclination: 89.59
Azimuth: 181.55
VS: 3.916.97

TVD (ft)

MD: 10.258
TVD: 7.786.85
Inclination: 90.34
Azimuth: 181.2
VS: 4.001.94

MD: 10.321
TVD: 7.786.75
Inclination: 89.84
Azimuth: 181.43
VS: 4.064.92

WT IN 9.0/ OUT 9.0
VIS IN 40/ OUT 40

rm, pty-rlky ip, frm-brt, cyxn-mcxln, v sl arg, calc,
difse sting bl-wh mky cut, thn bri bl-wh resd ring

LS: crm-offwht lt brn, pty-rlky ip, frm-brt, cyxn-mcxln, v sl arg, calc,
rr bent; mod-hvy, difse sting bl-wh mky cut, thn bri bl-wh resd ring

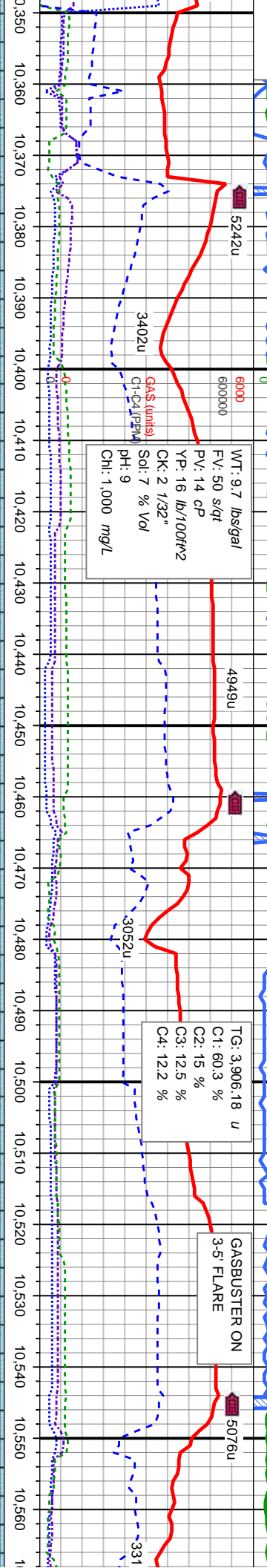
LS: crm-offwht lt brn, pty-rlky ip, frm-t
tr bent; difse invy sting wi mod-g bl-wh



MINDEPTH
RESUME DRILLING LATERAL
12/28/2013, 6.125" HOLE W/ BIT
#7, VEAREL, V2513D. DEPTH IN:
10361' MD.

3D
125'
0.361
1.936

2X12
12.25



WT IN 9.8/ OUT 9.8
VIS IN 48/ OUT 48

6500

MD: 10,406
TVD: 7,786.82
Inclination: 90.06
Azimuth: 182.34
VS: 4,149.87

MD: 10,491
TVD: 7,787.3
Inclination: 89.29
Azimuth: 183.52
VS: 4,234.74

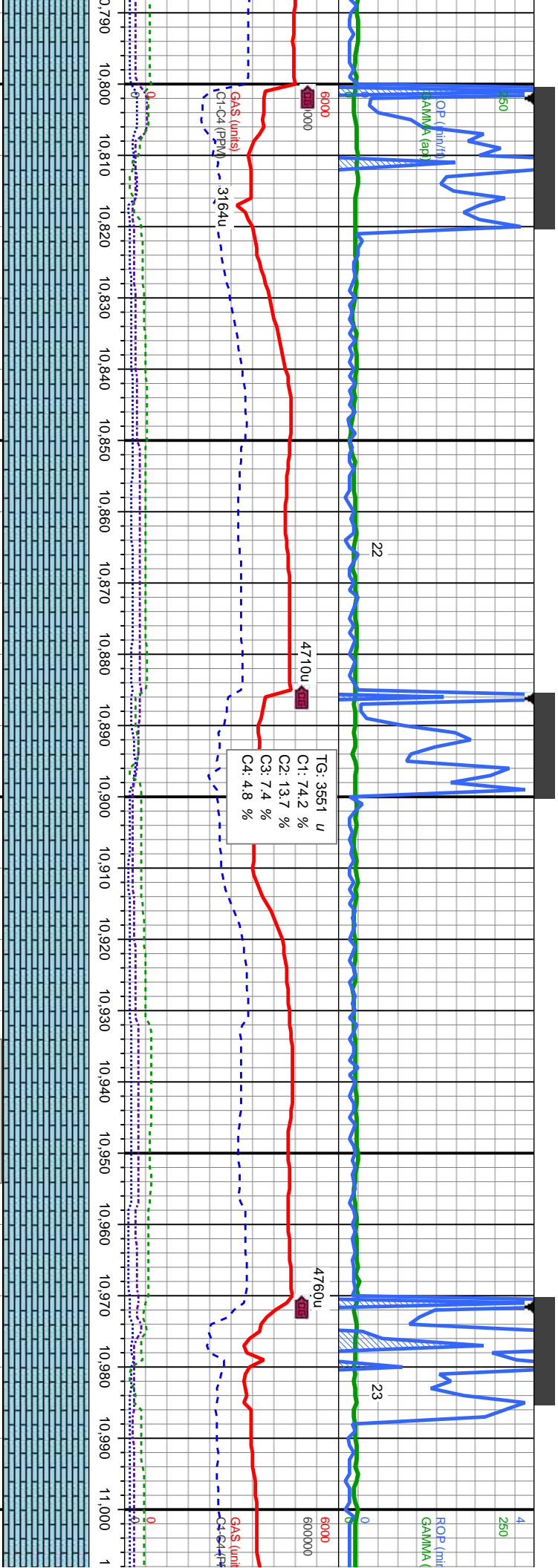
WT IN 9.7/ OUT 9.7
VIS IN 50/ OUT 50

brit, cyxln-mcxln, v sl arg, calc,
cut, thn bri bl-wh resd ring

L.S: crm-offwht lt brn, pty-flky ip, frm-brit, cyxln-mcxln, v sl arg, calc, tr
bent; difse hvy stmg wi mod-g bl-wh cut, thn bri bl-wh resd ring

L.S: crm-offwht lt brn, pty-flky ip, frm-brit, cyxln-mcxln, v sl
tr bent; mod-hvy, difse stmg bl-wh mky cut, thn bri bl-wh re





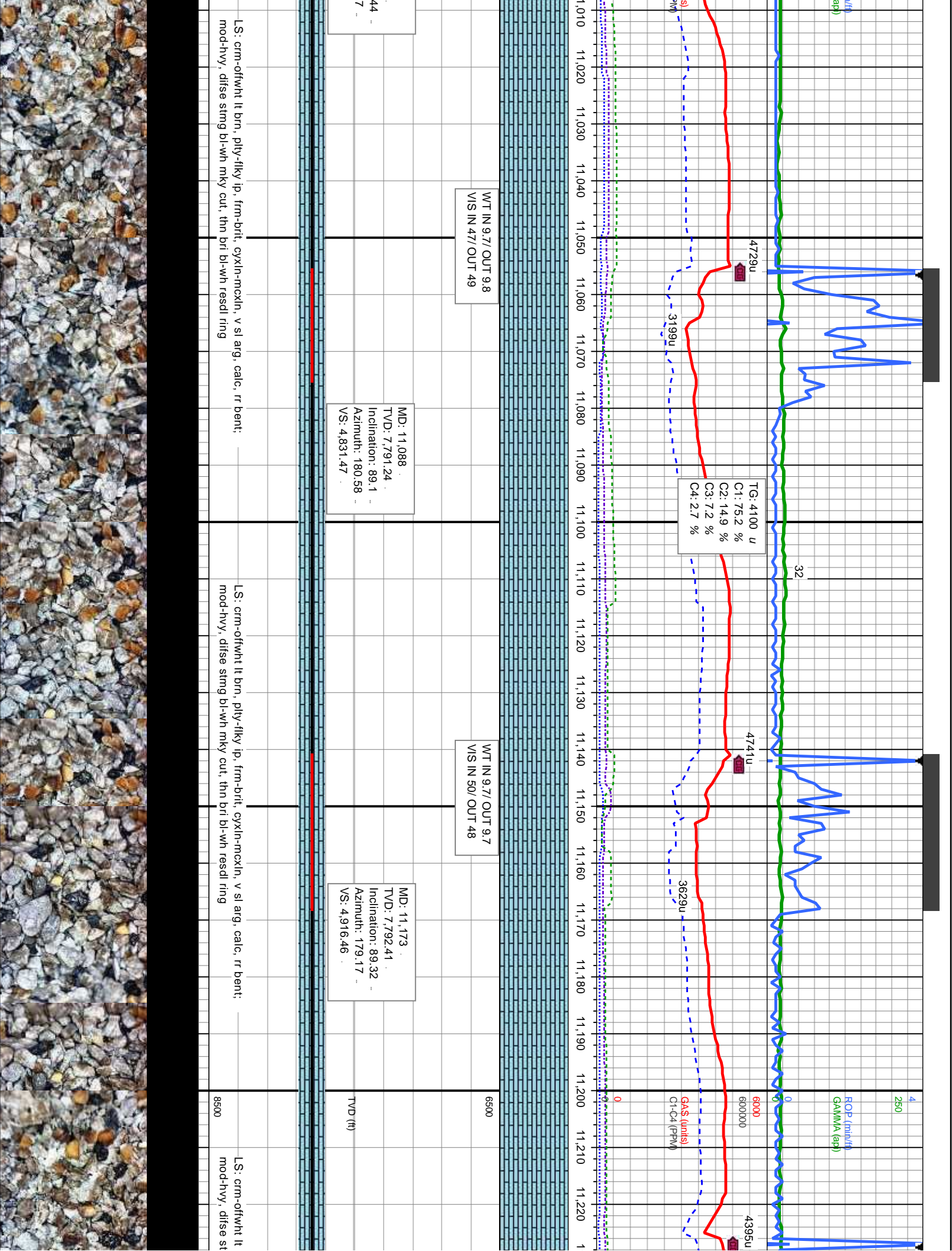
MD: 10,832
TVD: 7,788.86
Inclination: 90.12
Azimuth: 179.91
VS: 4,575.52

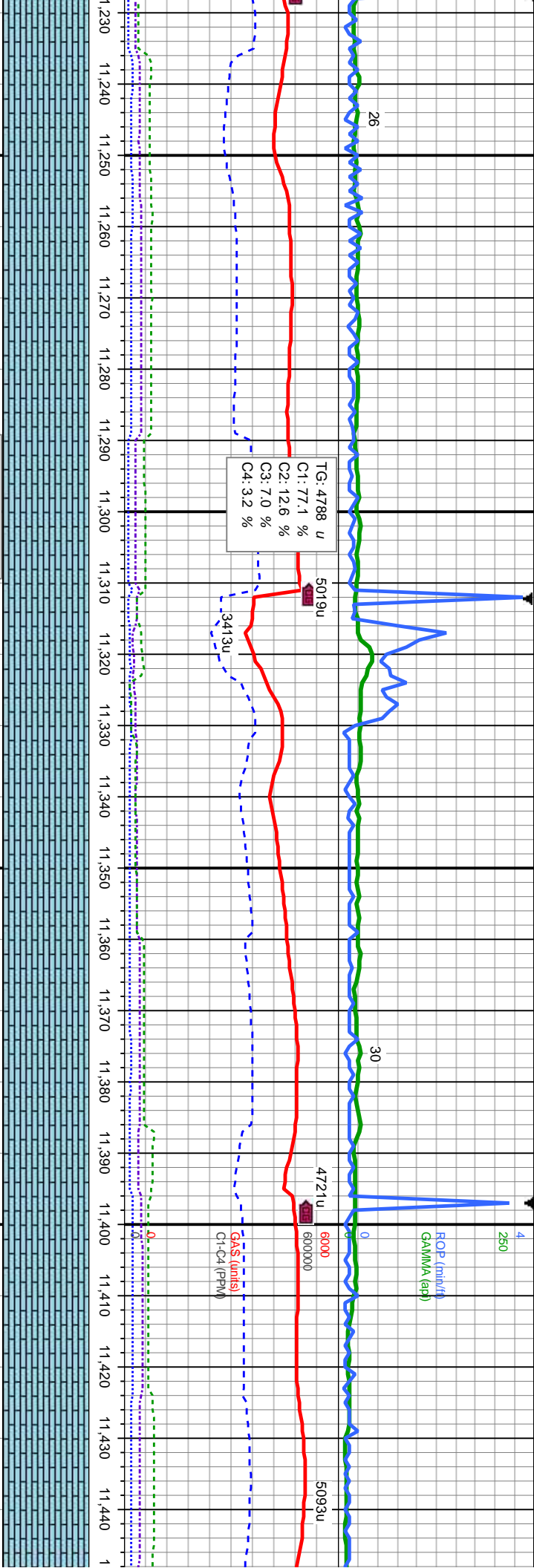
MD: 10,917
TVD: 7,789.25
Inclination: 89.35
Azimuth: 180.63
VS: 4,660.51

MD: 11,003
TVD: 7,790.16
Inclination: 89.
Azimuth: 181.2
VS: 4,746.49

| | |
|------|--|
| 8500 | L.S: crm-offwht lt brn, pty-fiky ip, frm-brit, cyxln-mexln, v sl arg, calc, rr bent; mod-hvy, difse sting bl-wh mky cut, thn bri bl-wh resd ring |
| 8500 | L.S: crm-offwht lt brn, pty-fiky ip, frm-brit, cyxln-mexln, v sl arg, calc, rr bent; mod-hvy, difse sting bl-wh mky cut, thn bri bl-wh resd ring |







MD: 11,258
TVD: 7,793.7
Inclination: 88.95
Azimuth: 180.08
VS: 5,001.45

TG: 4788 u
C1: 77.1 %
C2: 12.6 %
C3: 7.0 %
C4: 3.2 %

MD: 11,344
TVD: 7,794.72
Inclination: 89.69
Azimuth: 179.51
VS: 5,087.44

TVD (ft)

MD: 11,427
TVD: 7,794.38
Inclination: 90.77
Azimuth: 180.33
VS: 5,170.44

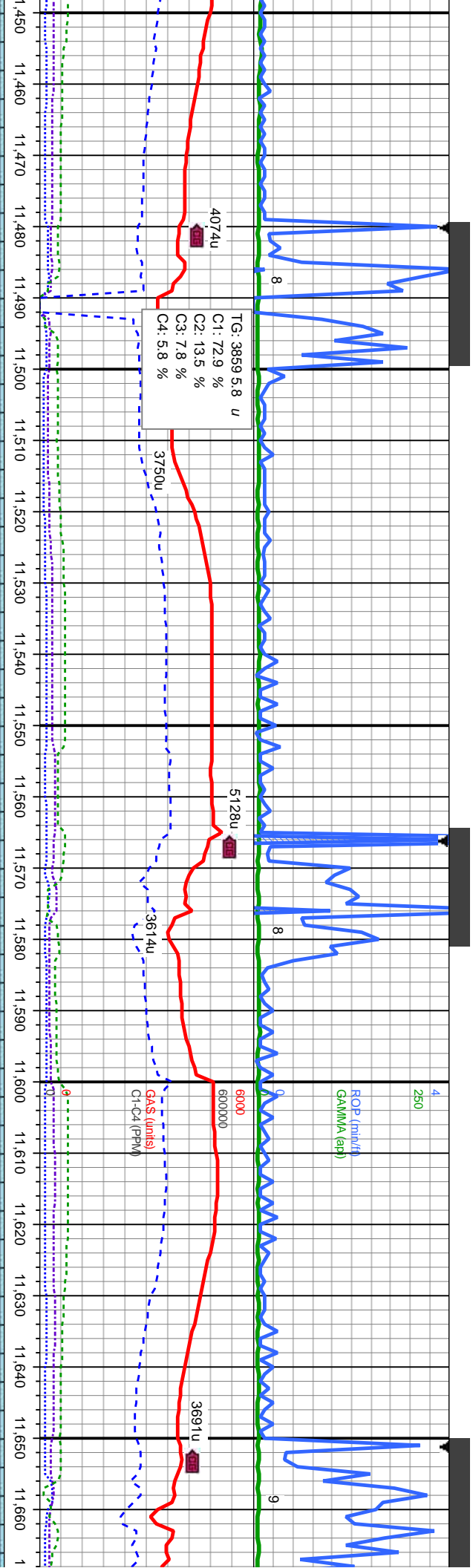
WT IN 9.7/ OUT 9.7
VIS IN 50/ OUT 50

brn, pty-rlky lp, frm-brit, cyxln-mcxln, v sl arg, calc, rr bent;
mg bl-wh mky cut, thn bri bl-wh resd ring

LS: crm-offwht lt brn, pty-rlky lp, frm-brit, cyxln-mcxln, v sl arg, calc, rr bent;
mod-hvy, difse stmg bl-wh mky cut, thn bri bl-wh resd ring

LS: crm-offwht lt brn, pty-rlky lp, frm-t
mod-hvy, difse stmg bl-wh mky cut, th





WT IN 9.7/ OUT 9.6
VIS IN 50/ OUT 51

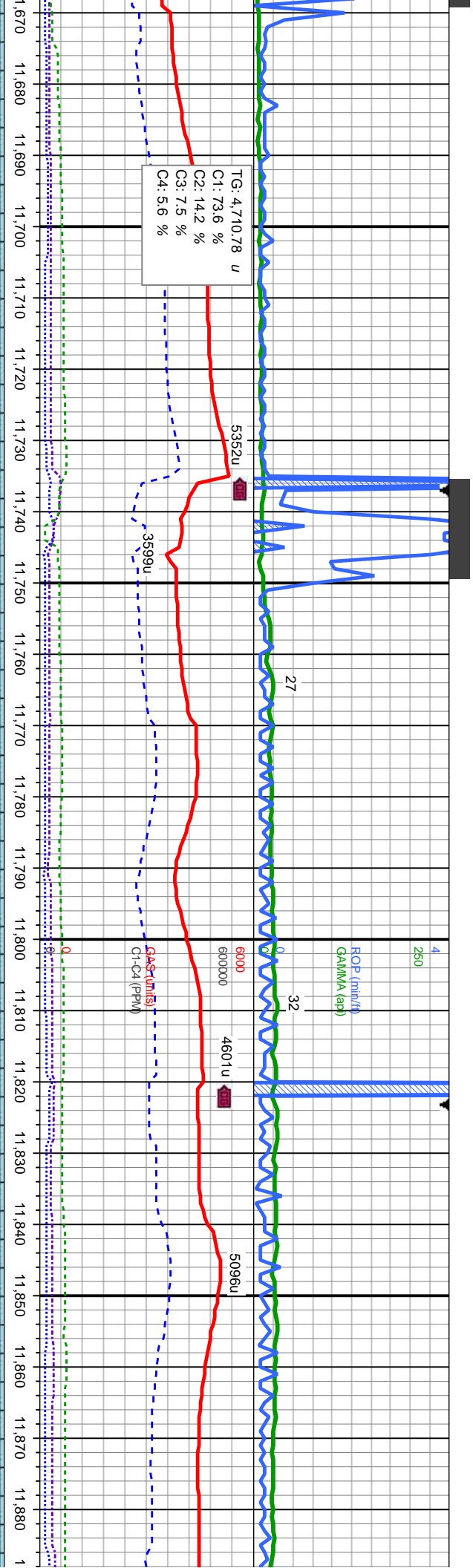
MD: 11,512
TVD: 7,793.84
Inclination: 89.96
Azimuth: 180.36
VS: 5,255.43

WT IN 9.7/ OUT 9.7
VIS IN 49/ OUT 50

MD: 11,597
TVD: 7,793.9
Inclination: 89.96
Azimuth: 180.04
VS: 5,340.43

| | |
|---|--|
| prft, cyxln-mcxln, v sl arg, calc, rr bent; | LS: crm-offwht lt brn, pily-flky lp, frm-brtl, cyxln-mcxln, v sl arg, calc, rr bent; |
| n bri bl-wh resd ring | mod-hvy, disse stmg bl-wh mky cut, thn bri bl-wh resd ring |
| | 8500 |
| | LS: crm-offwht lt brn, pily-flky lp, frm-brtl, cyxln-mcxln, v sl arg, calc, rr bent; |
| | mod-hvy, disse stmg bl-wh mky cut, thn bri bl-wh resd ring |

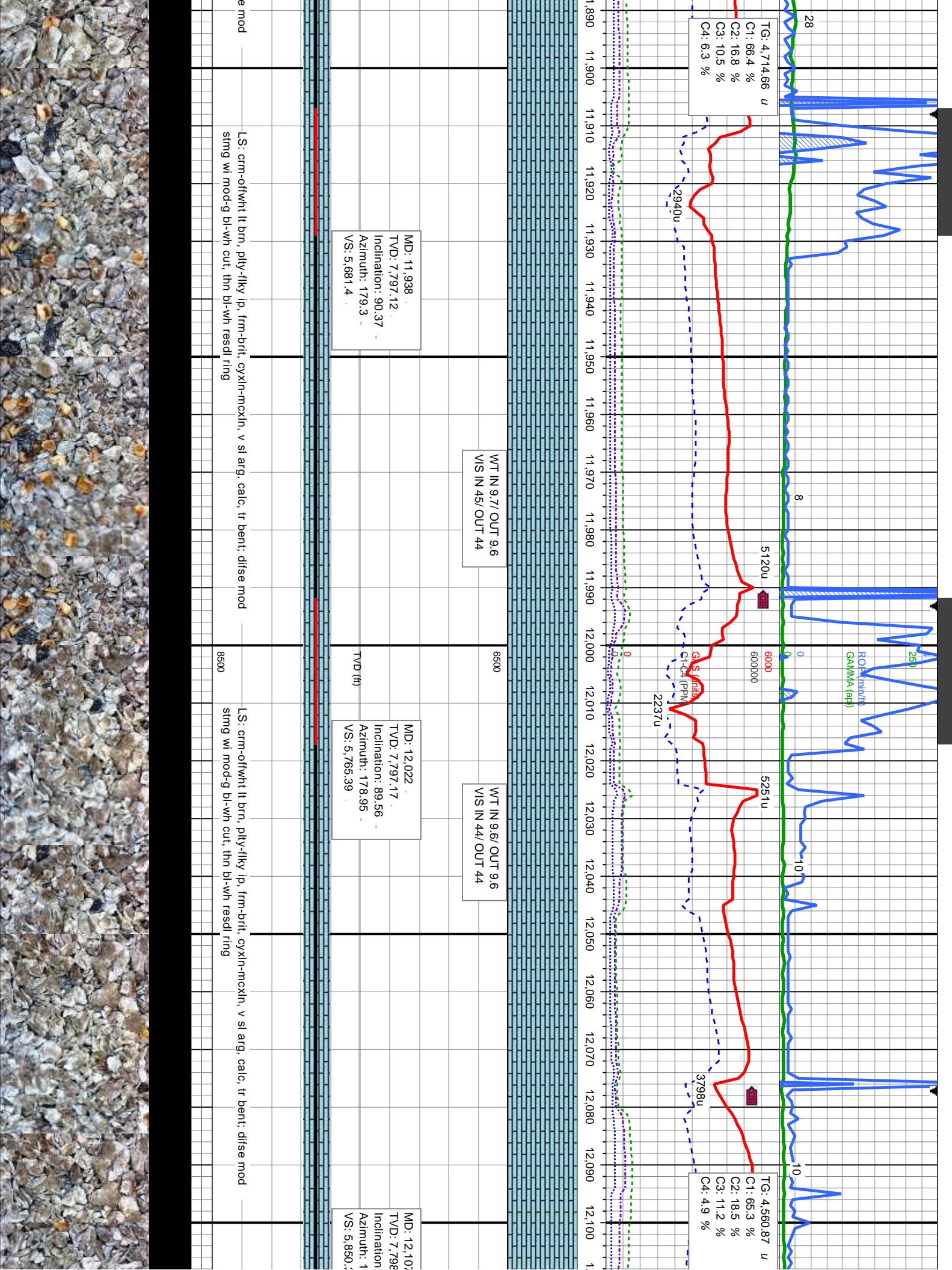


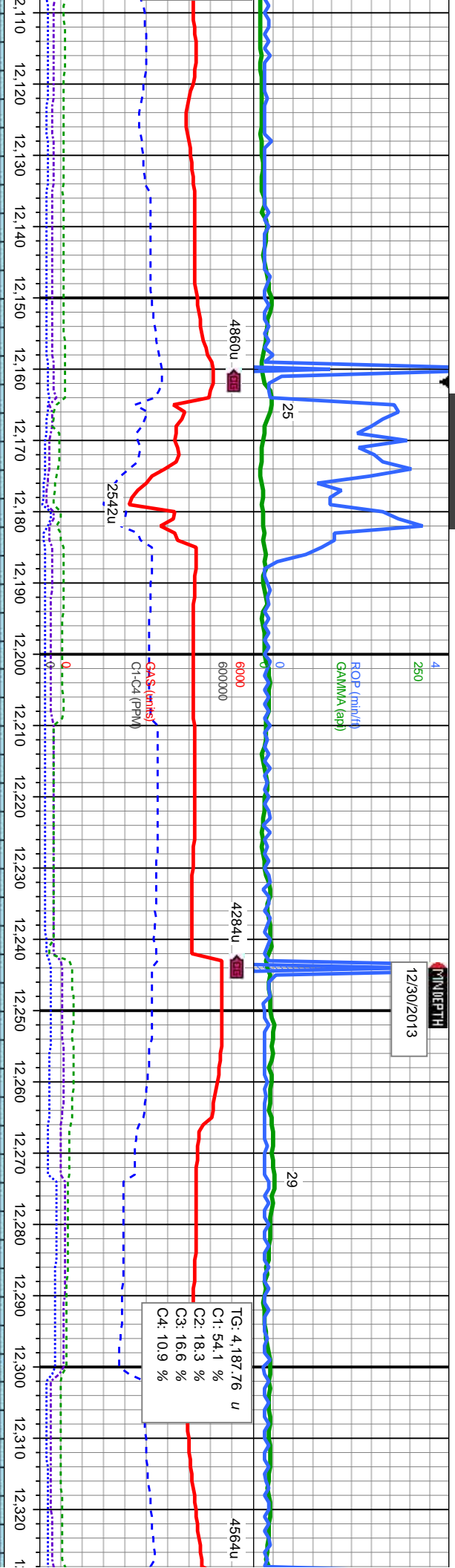


| | | | | | |
|--|--|--|--|---|--|
| MD: 11,683 TVD: 7,794.58 Inclination: 89.13 Azimuth: 179.92 VS: 5,426.43 | | MD: 11,768 TVD: 7,796.13 Inclination: 88.79 Azimuth: 179.43 VS: 5,511.41 | | MD: 11,853 TVD: 7,797.21 Inclination: 89.75 Azimuth: 180.68 VS: 5,596.4 | |
| | | | | TVD (ft) | |

| | | | |
|----------------------|--|------|--|
| atig, calc, rr bent; | LS: crm-offwht lt brn, ply-fiky ip, frm-brt, cyxln-mcxln, v sl arg, calc, tr bent; dl'se | 8500 | LS: crm-offwht lt brn, ply-fiky ip, frm-brt, cyxln-mcxln, v sl arg, calc, tr bent; dl'se |
|----------------------|--|------|--|







WT IN 9.6/ OUT 9.6
VIS IN 44/ OUT 44

MD: 12,191
TVD: 7,798.56
Inclination: 90.37
Azimuth: 179.2
VS: 5,934.38

6500
TVD (ft)

WT IN 9.7/ OUT 9.7
VIS IN 46/ OUT 46

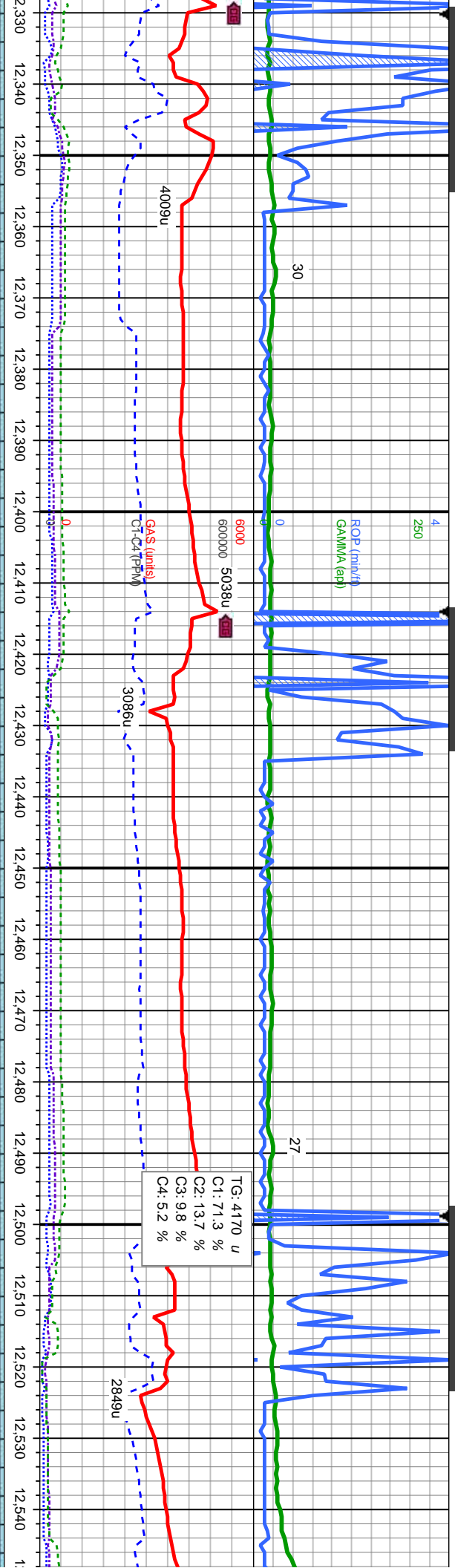
MD: 12,275
TVD: 7,797.68
Inclination: 90.83
Azimuth: 180.52
VS: 6,018.37

LS: crm-offwht lt brn, pty-flky ip, frm-brt, cyxn-mcxln, v sl arg, calc, tr bent, difse mod
stimg w/ mod-g bl-wh cut, thn bl-wh resd ring

LS: crm-offwht lt brn, pty-flky ip, frm-brt, cyxn-mcxln, v sl arg, calc, tr bent, difse
mod stimg w/ mod-g bl-wh cut, thn bl-wh resd ring

LS: crm-offwht lt k
stimg w/ mod-g bl-





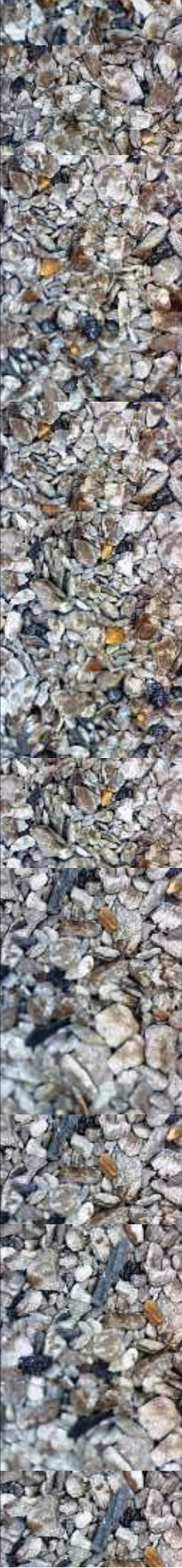
| WT IN 9.7/ OUT 9.7 VIS IN 46/ OUT 46 | WT IN 9.6/ OUT 9.6 VIS IN 45/ OUT 45 | WT IN 9.6/ OUT 9.6 VIS IN 45/ OUT 45 | CO MD TVD |
|---|---|---|-----------------|
| | | | |

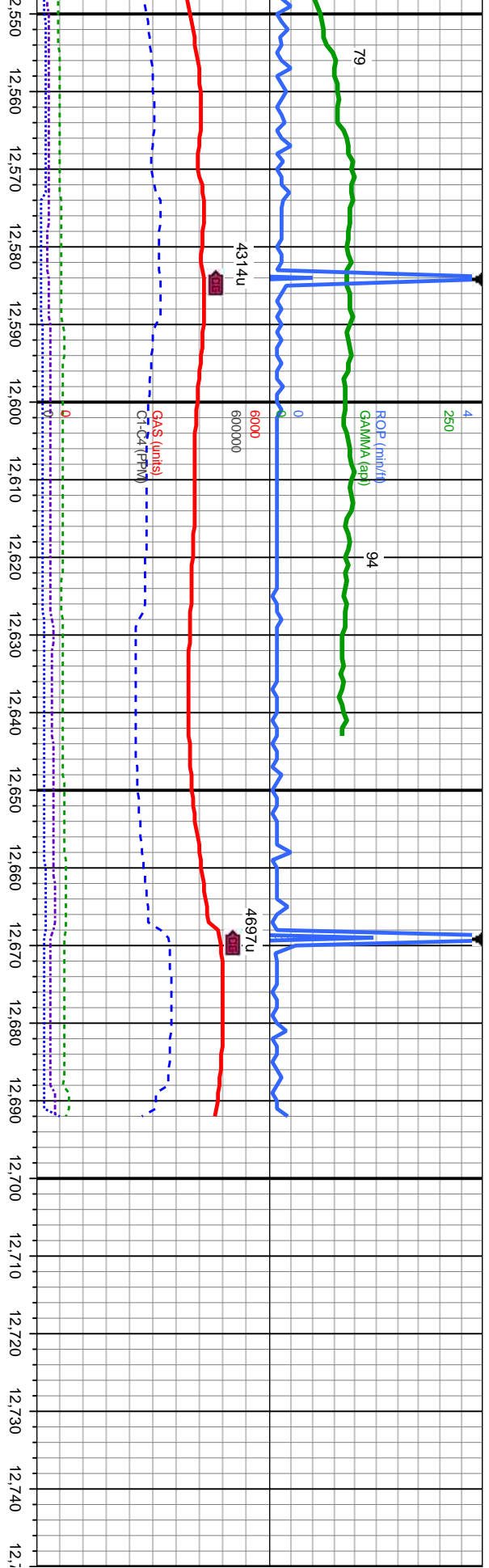
MD: 12,359
TVD: 7,796.82
Inclination: 90.34
Azimuth: 179.26
VS: 6,102.36

MD: 12,444
TVD: 7,796.14
Inclination: 90.58
Azimuth: 180.45
VS: 6,187.35

MD: 12,529
TVD: 7,796.14
Inclination: 89.41
Azimuth: 180.92
VS: 6,272.34

| | | | | | | |
|-----------------------------|------|---|------|---|------|---|
| wh cut, thn bl-wh resd ring | 8500 | LS: crm-offwht lt brn, pty-illy lp, frm-brit, cyxln-mcxln, v sl arg, calc, tr bent; difse mod | 8500 | LS: crm-offwht lt brn, pty-illy lp, frm-brit, cyxln-mcxln, v sl arg, calc, tr bent; difse mod | 8500 | LS: crm-offwht lt brn, pty-illy lp, frm-brit, cyxln-mcxln, v sl arg, calc, tr bent; difse mod |
| | | | | | | |





DELL FM.
12555'
7796'

6500

WT IN 9.6/ OUT 9.6
VIS IN 47/ OUT 47

Projection to bit

MD: 12.692
TVD: 7,800.97
Inclination: 87.93
Azimuth: 180.15
VS: 6.435.26

WELL TD @ 12692' MD
ON 12/30/2013 @ 06:10 AM

MD: 12.613
TVD: 7,798.11
Inclination: 87.9
Azimuth: 180
VS: 6.356.31

MD: 12.637
TVD: 7,798.99
Inclination: 87.93
Azimuth: 180.15
VS: 6.356.31

SS: lt-med brn,lt gry-med-gry, mot, vf-f gr, mod-v frm, sb-rnd-rnd, med-w strd,
p-mod cons, sl calc cmt, LS: crm-offwnt lt brn, pty-fty ip, frm-brt, cyxln-mcxln,
v sl arg, calc, difse sl stmg mod-dull bl wh cut, thn bl resd ring

8500

THANK YOU FOR USING
COLUMBINE LOGGING INC.

