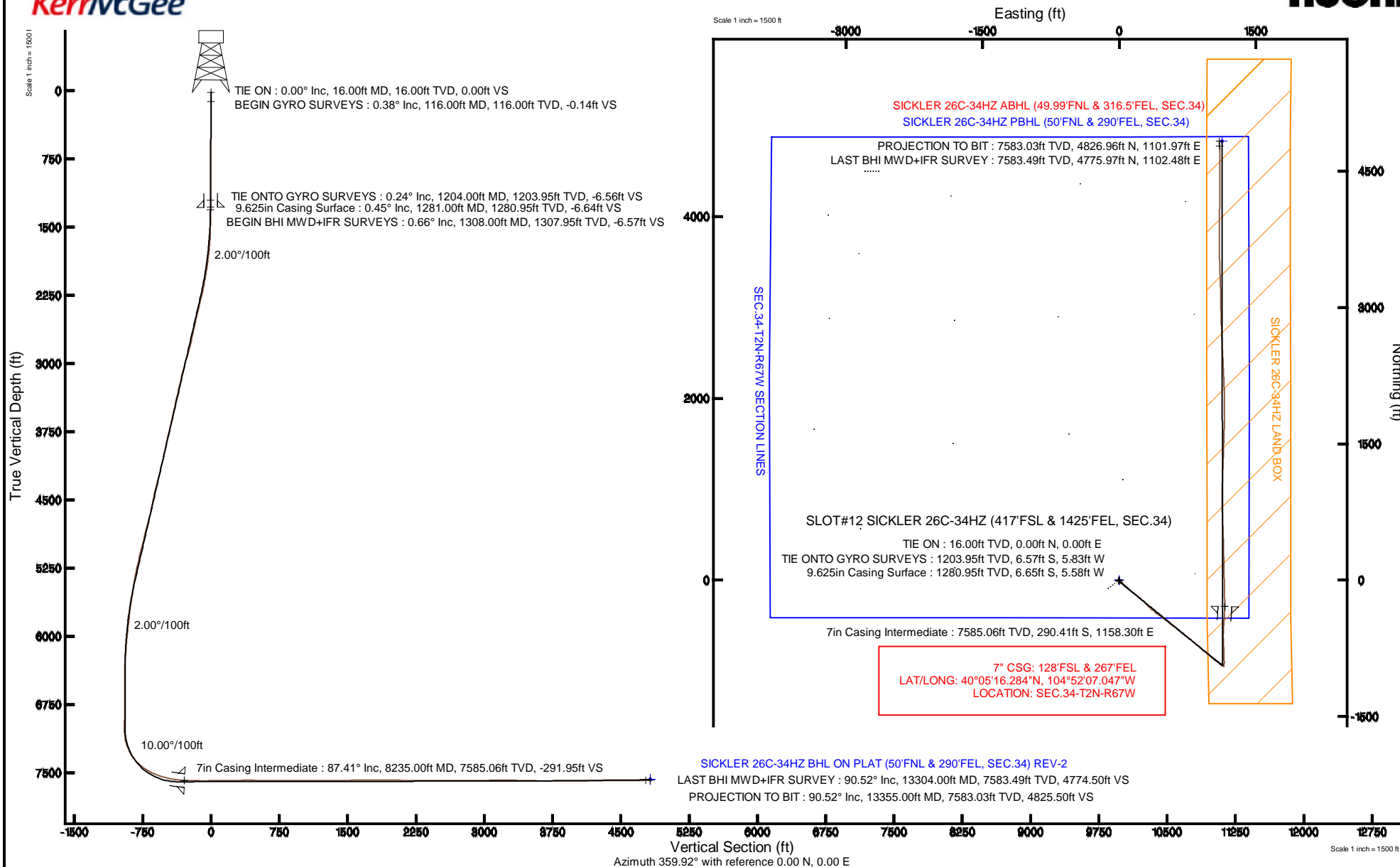


KERR-MCGEE OIL & GAS ONSHORE LP

Location: COLORADO Slot: SLOT#12 SICKLER 26C-34HZ (417'FSL & 1425'FEL, SEC.34)
 Field: WELD COUNTY (KERR MCGEE) Well: SICKLER 26C-34HZ
 Facility: SEC.34-T2N-R67W Wellbore: SICKLER 26C-34HZ PWB

Plot reference wellpath is SICKLER 26C-34HZ (REV-C.0) PWP

True vertical depths are referenced to XTREME 6 (16' RKB) (RKB)	Grid System: NAD83 / Lambert Colorado SP, Northern Zone (501), US feet
Measured depths are referenced to XTREME 6 (16' RKB) (RKB)	North Reference: True north
XTREME 6 (16' RKB) (RKB) to Mean Sea Level: 4965 feet	Scale: True distance
Mean Sea Level to Mud line (At Slot: SLOT#12 SICKLER 26C-34HZ (417'FSL & 1425'FEL, SEC.34)): 0 feet	Depths are in feet
Coordinates are in feet referenced to Slot	Created by: robale01 on 07/Aug/2014



Actual Wellpath Report

SICKLER 26C-34HZ AWP

Page 1 of 7

REFERENCE WELLPATH IDENTIFICATION

Operator	KERR-MCGEE OIL & GAS ONSHORE LP	Slot	SLOT#12 SICKLER 26C-34HZ (417'FSL & 1425'FEL, SEC.34)
Area	COLORADO	Well	SICKLER 26C-34HZ
Field	WELD COUNTY (KERR MCGEE)	Wellbore	SICKLER 26C-34HZ AWP
Facility	SEC.34-T2N-R67W		

REPORT SETUP INFORMATION

Projection System	NAD83 / Lambert Colorado SP, Northern Zone (501), US feet	Software System	WellArchitect® 4.0.0
North Reference	True	User	Robiale01
Scale	0.999961	Report Generated	07/Aug/2014 at 16:18
Convergence at slot	n/a	Database/Source file	WellArchitectDB/SICKLER_26C-34HZ_AWP.xml

WELLPATH LOCATION

	Local coordinates		Grid coordinates		Geographic coordinates	
	North[ft]	East[ft]	Easting[US ft]	Northing[US ft]	Latitude	Longitude
Slot Location	-4496.75	2642.64	3175492.55	1275761.95	40°05'19.154"N	104°52'21.950"W
Facility Reference Pt			3172818.76	1280239.99	40°06'03.593"N	104°52'55.951"W
Field Reference Pt			3197771.84	1268891.29	40°04'09.600"N	104°47'36.000"W

WELLPATH DATUM

Calculation method	Minimum curvature	XTREME 6 (16' RKB) (RKB) to Facility Vertical Datum	4965.00ft
Horizontal Reference Pt	Slot	XTREME 6 (16' RKB) (RKB) to Mean Sea Level	4965.00ft
Vertical Reference Pt	XTREME 6 (16' RKB) (RKB)	XTREME 6 (16' RKB) (RKB) to Mud Line at Slot (SLOT#12 SICKLER 26C-34HZ (417'FSL & 1425'FEL, SEC.34))	4965.00ft
MD Reference Pt	XTREME 6 (16' RKB) (RKB)	Section Origin	N 0.00, E 0.00 ft
Field Vertical Reference	Mean Sea Level	Section Azimuth	12.86°

Actual Wellpath Report

SICKLER 26C-34HZ AWP

Page 2 of 7

REFERENCE WELLPATH IDENTIFICATION

Operator	KERR-MCGEE OIL & GAS ONSHORE LP	Slot	SLOT#12 SICKLER 26C-34HZ (417'FSL & 1425'FEL, SEC.34)
Area	COLORADO	Well	SICKLER 26C-34HZ
Field	WELD COUNTY (KERR MCGEE)	Wellbore	SICKLER 26C-34HZ AWP
Facility	SEC.34-T2N-R67W		

WELLPATH DATA (170 stations) † = interpolated/extrapolated station

MD [ft]	Inclination [°]	Azimuth [°]	TVD [ft]	Vert Sect [ft]	North [ft]	East [ft]	Latitude	Longitude	DLS [°/100ft]	Comments
0.00†	0.000	244.460	0.00	0.00	0.00	0.00	40°05'19.154"N	104°52'21.950"W	0.00	
16.00	0.000	244.460	16.00	0.00	0.00	0.00	40°05'19.154"N	104°52'21.950"W	0.00	TIE ON
116.00	0.380	244.460	116.00	-0.21	-0.14	-0.30	40°05'19.153"N	104°52'21.954"W	0.38	BEGIN GYRO SURVEYS
216.00	0.120	347.880	216.00	-0.32	-0.18	-0.62	40°05'19.152"N	104°52'21.958"W	0.42	
316.00	0.360	144.180	316.00	-0.43	-0.34	-0.46	40°05'19.151"N	104°52'21.956"W	0.47	
416.00	0.650	209.350	415.99	-1.18	-1.09	-0.55	40°05'19.143"N	104°52'21.957"W	0.60	
516.00	0.690	229.960	515.99	-2.20	-1.97	-1.29	40°05'19.135"N	104°52'21.967"W	0.24	
616.00	0.500	220.810	615.98	-3.07	-2.68	-2.04	40°05'19.127"N	104°52'21.976"W	0.21	
716.00	0.770	201.320	715.98	-4.12	-3.64	-2.57	40°05'19.118"N	104°52'21.983"W	0.34	
816.00	0.760	209.890	815.97	-5.42	-4.84	-3.14	40°05'19.106"N	104°52'21.990"W	0.11	
916.00	0.790	223.520	915.96	-6.65	-5.92	-3.95	40°05'19.096"N	104°52'22.001"W	0.19	
1016.00	0.550	250.910	1015.95	-7.49	-6.57	-4.88	40°05'19.089"N	104°52'22.013"W	0.39	
1116.00	0.340	307.300	1115.95	-7.62	-6.55	-5.57	40°05'19.089"N	104°52'22.022"W	0.46	
1204.00	0.240	198.250	1203.95	-7.70	-6.57	-5.83	40°05'19.089"N	104°52'22.025"W	0.54	TIE ONTO GYRO SURVEYS
1308.00	0.660	70.510	1307.95	-7.60	-6.57	-5.33	40°05'19.089"N	104°52'22.019"W	0.80	BEGIN BHI MWD+IFR SURVEYS
1338.00	1.080	63.230	1337.94	-7.32	-6.39	-4.92	40°05'19.091"N	104°52'22.013"W	1.44	
1428.00	2.280	101.010	1427.90	-6.73	-6.35	-2.40	40°05'19.091"N	104°52'21.981"W	1.75	
1520.00	3.240	114.540	1519.80	-7.19	-7.78	1.76	40°05'19.077"N	104°52'21.927"W	1.25	
1610.00	4.490	121.120	1609.59	-8.81	-10.66	7.09	40°05'19.049"N	104°52'21.859"W	1.47	
1701.00	6.740	131.570	1700.15	-12.49	-16.04	14.13	40°05'18.995"N	104°52'21.768"W	2.71	
1793.00	9.610	131.250	1791.21	-18.74	-24.69	23.95	40°05'18.910"N	104°52'21.642"W	3.12	
1885.00	11.380	132.760	1881.67	-26.92	-35.91	36.39	40°05'18.799"N	104°52'21.482"W	1.95	
1977.00	13.470	132.530	1971.51	-36.75	-49.32	50.95	40°05'18.667"N	104°52'21.294"W	2.27	
2067.00	14.810	131.880	2058.78	-47.51	-64.09	67.24	40°05'18.521"N	104°52'21.085"W	1.50	
2158.00	16.830	130.100	2146.33	-59.19	-80.34	85.98	40°05'18.360"N	104°52'20.844"W	2.28	
2249.00	18.920	132.250	2232.93	-72.46	-98.75	106.98	40°05'18.178"N	104°52'20.574"W	2.41	
2340.00	20.070	129.990	2318.71	-86.82	-118.70	129.86	40°05'17.981"N	104°52'20.279"W	1.51	
2430.00	21.970	129.850	2402.72	-101.50	-139.41	154.62	40°05'17.776"N	104°52'19.961"W	2.11	
2521.00	19.550	128.990	2487.80	-115.94	-159.91	179.53	40°05'17.574"N	104°52'19.640"W	2.68	
2612.00	20.480	127.500	2573.31	-129.28	-179.18	203.99	40°05'17.383"N	104°52'19.325"W	1.17	
2703.00	18.000	127.320	2659.22	-141.74	-197.39	227.81	40°05'17.203"N	104°52'19.019"W	2.73	
2788.00	18.440	133.550	2739.96	-154.04	-214.62	248.00	40°05'17.033"N	104°52'18.759"W	2.35	
2872.00	20.980	132.950	2819.04	-168.36	-234.02	268.63	40°05'16.841"N	104°52'18.494"W	3.03	
2957.00	22.320	134.990	2898.04	-184.58	-255.80	291.19	40°05'16.626"N	104°52'18.204"W	1.81	
3042.00	20.720	136.490	2977.11	-201.49	-278.12	312.96	40°05'16.406"N	104°52'17.923"W	1.99	
3128.00	21.010	135.050	3057.47	-218.13	-300.07	334.32	40°05'16.189"N	104°52'17.649"W	0.69	
3213.00	20.820	129.900	3136.88	-233.12	-320.54	356.68	40°05'15.986"N	104°52'17.361"W	2.17	
3298.00	20.700	127.570	3216.36	-246.26	-339.39	380.18	40°05'15.800"N	104°52'17.059"W	0.98	
3383.00	20.750	128.600	3295.86	-259.08	-357.95	403.85	40°05'15.617"N	104°52'16.754"W	0.43	
3469.00	20.460	126.380	3376.36	-271.70	-376.37	427.86	40°05'15.435"N	104°52'16.445"W	0.97	
3554.00	19.640	126.270	3456.21	-283.30	-393.63	451.34	40°05'15.264"N	104°52'16.143"W	0.97	
3639.00	19.630	128.170	3536.27	-295.08	-410.90	474.08	40°05'15.093"N	104°52'15.850"W	0.75	
3724.00	20.430	128.410	3616.13	-307.58	-428.94	496.93	40°05'14.915"N	104°52'15.556"W	0.95	
3809.00	21.020	128.930	3695.63	-320.68	-447.74	520.41	40°05'14.729"N	104°52'15.254"W	0.73	
3895.00	21.030	127.320	3775.90	-333.85	-466.79	544.68	40°05'14.541"N	104°52'14.942"W	0.67	

Actual Wellpath Report

SICKLER 26C-34HZ AWP

Page 3 of 7

REFERENCE WELLPATH IDENTIFICATION				
Operator	KERR-MCGEE OIL & GAS ONSHORE LP		Slot	SLOT#12 SICKLER 26C-34HZ (417'FSL & 1425'FEL, SEC.34)
Area	COLORADO		Well	SICKLER 26C-34HZ
Field	WELD COUNTY (KERR MCGEE)		Wellbore	SICKLER 26C-34HZ AWP
Facility	SEC.34-T2N-R67W			

WELLPATH DATA (170 stations)										
MD [ft]	Inclination [°]	Azimuth [°]	TVD [ft]	Vert Sect [ft]	North [ft]	East [ft]	Latitude	Longitude	DLS [°/100ft]	Comments
3980.00	20.270	127.090	3855.44	-346.21	-484.91	568.56	40°05'14.362"N	104°52'14.635"W	0.90	
4065.00	19.180	126.500	3935.45	-357.85	-502.10	591.53	40°05'14.192"N	104°52'14.339"W	1.30	
4150.00	18.800	130.290	4015.83	-369.76	-519.26	613.20	40°05'14.022"N	104°52'14.061"W	1.52	
4235.00	20.270	129.170	4095.93	-382.60	-537.42	635.06	40°05'13.843"N	104°52'13.779"W	1.78	
4320.00	20.810	128.400	4175.53	-395.63	-556.10	658.31	40°05'13.658"N	104°52'13.480"W	0.71	
4406.00	21.870	129.310	4255.63	-409.35	-575.74	682.68	40°05'13.464"N	104°52'13.167"W	1.29	
4491.00	22.560	129.500	4334.32	-423.72	-596.14	707.51	40°05'13.263"N	104°52'12.847"W	0.82	
4575.00	21.140	127.630	4412.29	-437.29	-615.64	731.94	40°05'13.070"N	104°52'12.533"W	1.88	
4660.00	17.760	126.330	4492.42	-448.88	-632.68	754.53	40°05'12.902"N	104°52'12.242"W	4.01	
4744.00	18.970	127.810	4572.14	-459.74	-648.64	775.64	40°05'12.744"N	104°52'11.971"W	1.54	
4830.00	21.400	128.640	4652.86	-472.46	-667.01	798.94	40°05'12.562"N	104°52'11.671"W	2.85	
4915.00	22.900	129.780	4731.58	-486.69	-687.27	823.76	40°05'12.362"N	104°52'11.352"W	1.84	
5000.00	21.450	130.780	4810.29	-501.46	-708.01	848.24	40°05'12.157"N	104°52'11.037"W	1.76	
5085.00	19.490	132.540	4889.92	-515.76	-727.75	870.46	40°05'11.962"N	104°52'10.751"W	2.42	
5169.00	19.920	130.660	4969.00	-529.37	-746.55	891.64	40°05'11.776"N	104°52'10.478"W	0.91	
5255.00	21.820	130.110	5049.36	-543.52	-766.39	914.98	40°05'11.580"N	104°52'10.178"W	2.22	
5340.00	21.410	127.620	5128.38	-557.25	-786.04	939.35	40°05'11.386"N	104°52'09.864"W	1.18	
5425.00	19.930	128.580	5207.91	-570.04	-804.55	962.97	40°05'11.203"N	104°52'09.561"W	1.79	
5510.00	17.590	129.030	5288.39	-581.99	-821.67	984.27	40°05'11.034"N	104°52'09.287"W	2.76	
5595.00	15.030	130.670	5369.96	-592.80	-836.94	1002.61	40°05'10.883"N	104°52'09.051"W	3.06	
5681.00	12.360	130.760	5453.51	-602.31	-850.22	1018.04	40°05'10.752"N	104°52'08.852"W	3.10	
5765.00	14.120	125.890	5535.27	-610.53	-862.10	1033.15	40°05'10.634"N	104°52'08.658"W	2.48	
5850.00	14.770	128.770	5617.59	-619.32	-874.96	1050.00	40°05'10.507"N	104°52'08.441"W	1.14	
5935.00	12.830	126.110	5700.13	-627.78	-887.31	1066.08	40°05'10.385"N	104°52'08.234"W	2.40	
6020.00	9.470	123.590	5783.52	-633.98	-896.74	1079.53	40°05'10.292"N	104°52'08.061"W	3.99	
6105.00	11.740	126.800	5867.06	-639.97	-905.79	1092.28	40°05'10.203"N	104°52'07.897"W	2.76	
6191.00	10.980	124.710	5951.37	-646.57	-915.70	1106.02	40°05'10.105"N	104°52'07.720"W	1.00	
6276.00	9.990	121.760	6034.95	-651.97	-924.19	1118.94	40°05'10.021"N	104°52'07.554"W	1.32	
6361.00	8.850	120.050	6118.81	-656.29	-931.34	1130.87	40°05'09.950"N	104°52'07.400"W	1.38	
6446.00	5.830	133.510	6203.11	-660.42	-937.59	1139.66	40°05'09.888"N	104°52'07.287"W	4.07	
6531.00	4.100	148.950	6287.79	-664.81	-943.17	1144.36	40°05'09.833"N	104°52'07.227"W	2.55	
6617.00	2.190	131.210	6373.66	-667.81	-946.89	1147.19	40°05'09.796"N	104°52'07.191"W	2.47	
6700.00	1.360	79.780	6456.62	-668.17	-947.76	1149.35	40°05'09.788"N	104°52'07.163"W	2.06	
6786.00	1.030	89.400	6542.60	-667.59	-947.57	1151.13	40°05'09.790"N	104°52'07.140"W	0.45	
6871.00	0.490	220.430	6627.60	-667.74	-947.84	1151.65	40°05'09.787"N	104°52'07.133"W	1.65	
6956.00	0.460	232.250	6712.59	-668.32	-948.32	1151.15	40°05'09.782"N	104°52'07.140"W	0.12	
7127.00	0.500	257.810	6883.59	-669.17	-948.90	1149.88	40°05'09.777"N	104°52'07.156"W	0.13	
7212.00	0.960	216.960	6968.58	-669.98	-949.55	1149.09	40°05'09.770"N	104°52'07.166"W	0.79	
7255.00	0.770	202.800	7011.58	-670.59	-950.10	1148.76	40°05'09.765"N	104°52'07.170"W	0.66	
7297.00	2.240	3.090	7053.57	-670.06	-949.54	1148.69	40°05'09.770"N	104°52'07.171"W	7.09	
7340.00	7.170	13.050	7096.41	-666.55	-946.08	1149.34	40°05'09.804"N	104°52'07.163"W	11.58	
7383.00	11.890	11.360	7138.81	-659.43	-939.12	1150.82	40°05'09.873"N	104°52'07.144"W	10.99	
7425.00	16.920	2.540	7179.48	-649.09	-928.77	1151.95	40°05'09.975"N	104°52'07.129"W	13.03	
7468.00	21.580	2.600	7220.06	-635.14	-914.61	1152.58	40°05'10.115"N	104°52'07.121"W	10.84	
7511.00	26.540	358.520	7259.32	-618.04	-897.09	1152.69	40°05'10.288"N	104°52'07.120"W	12.16	

Actual Wellpath Report

SICKLER 26C-34HZ AWP

Page 4 of 7

REFERENCE WELLPATH IDENTIFICATION

Operator	KERR-MCGEE OIL & GAS ONSHORE LP	Slot	SLOT#12 SICKLER 26C-34HZ (417'FSL & 1425'FEL, SEC.34)
Area	COLORADO	Well	SICKLER 26C-34HZ
Field	WELD COUNTY (KERR MCGEE)	Wellbore	SICKLER 26C-34HZ AWP
Facility	SEC.34-T2N-R67W		

WELLPATH DATA (170 stations) † = interpolated/extrapolated station

MD [ft]	Inclination [°]	Azimuth [°]	TVD [ft]	Vert Sect [ft]	North [ft]	East [ft]	Latitude	Longitude	DLS [°/100ft]	Comments
7553.00	30.760	357.020	7296.17	-598.61	-876.98	1151.89	40°05'10.487"N	104°52'07.130"W	10.19	
7596.00	35.660	357.970	7332.13	-575.90	-853.46	1150.88	40°05'10.720"N	104°52'07.143"W	11.46	
7638.00	40.300	0.370	7365.23	-550.79	-827.63	1150.53	40°05'10.975"N	104°52'07.147"W	11.59	
7681.00	45.430	358.870	7396.74	-522.34	-798.39	1150.32	40°05'11.264"N	104°52'07.150"W	12.16	
7724.00	50.290	357.500	7425.58	-491.50	-766.53	1149.29	40°05'11.579"N	104°52'07.163"W	11.55	
7766.00	55.250	356.350	7450.98	-459.36	-733.15	1147.49	40°05'11.909"N	104°52'07.187"W	12.01	
7808.00	59.210	356.260	7473.71	-425.52	-697.91	1145.21	40°05'12.257"N	104°52'07.216"W	9.43	
7850.00	63.060	357.700	7493.99	-390.15	-661.19	1143.28	40°05'12.620"N	104°52'07.241"W	9.65	
7893.00	66.610	359.620	7512.27	-352.42	-622.29	1142.38	40°05'13.004"N	104°52'07.252"W	9.19	
7935.00	69.970	1.110	7527.80	-314.33	-583.28	1142.64	40°05'13.390"N	104°52'07.249"W	8.65	
7978.00	72.810	2.650	7541.53	-274.33	-542.55	1143.98	40°05'13.792"N	104°52'07.232"W	7.43	
8021.00	75.190	4.180	7553.38	-233.56	-501.30	1146.45	40°05'14.200"N	104°52'07.200"W	6.51	
8063.00	78.480	4.530	7562.94	-193.12	-460.52	1149.55	40°05'14.603"N	104°52'07.160"W	7.88	
8106.00	80.550	4.880	7570.77	-151.27	-418.39	1153.02	40°05'15.019"N	104°52'07.115"W	4.88	
8149.00	82.090	3.050	7577.26	-109.27	-375.98	1155.96	40°05'15.438"N	104°52'07.077"W	5.52	
8191.00	84.530	1.310	7582.15	-68.29	-334.31	1157.54	40°05'15.850"N	104°52'07.057"W	7.12	
8203.00	85.800	1.200	7583.16	-56.57	-322.35	1157.80	40°05'15.968"N	104°52'07.054"W	10.62	
8235.00†	87.407	0.579	7585.06	-25.33	-290.41	1158.30	40°05'16.284"N	104°52'07.047"W	5.38	7" CASING POINT
8246.00	87.960	0.366	7585.50	-14.59	-279.42	1158.39	40°05'16.392"N	104°52'07.046"W	5.38	
8331.00	89.040	358.420	7587.73	68.04	-194.46	1157.49	40°05'17.232"N	104°52'07.058"W	2.62	
8417.00	89.780	358.340	7588.61	151.30	-108.50	1155.06	40°05'18.082"N	104°52'07.089"W	0.87	
8502.00	90.240	359.050	7588.60	233.72	-23.52	1153.12	40°05'18.921"N	104°52'07.114"W	1.00	
8587.00	91.100	358.800	7587.60	316.21	61.46	1151.53	40°05'19.761"N	104°52'07.134"W	1.05	
8672.00	90.610	358.900	7586.33	398.67	146.43	1149.82	40°05'20.601"N	104°52'07.156"W	0.59	
8757.00	90.370	358.730	7585.61	481.13	231.41	1148.07	40°05'21.441"N	104°52'07.179"W	0.35	
8842.00	91.690	358.720	7584.08	563.54	316.37	1146.17	40°05'22.280"N	104°52'07.203"W	1.55	
8927.00	89.960	358.760	7582.86	645.96	401.34	1144.31	40°05'23.120"N	104°52'07.227"W	2.04	
9012.00	88.630	358.070	7583.90	728.26	486.30	1141.95	40°05'23.959"N	104°52'07.257"W	1.76	
9097.00	89.320	357.600	7585.42	810.34	571.22	1138.74	40°05'24.799"N	104°52'07.298"W	0.98	
9182.00	90.150	357.520	7585.82	892.33	656.14	1135.13	40°05'25.638"N	104°52'07.345"W	0.98	
9268.00	89.190	359.060	7586.31	975.56	742.10	1132.56	40°05'26.487"N	104°52'07.378"W	2.11	
9353.00	90.180	359.150	7586.78	1058.12	827.09	1131.23	40°05'27.327"N	104°52'07.395"W	1.17	
9438.00	91.260	359.480	7585.71	1140.75	912.07	1130.22	40°05'28.167"N	104°52'07.408"W	1.33	
9523.00	90.090	0.870	7584.71	1223.66	997.06	1130.47	40°05'29.007"N	104°52'07.404"W	2.14	
9608.00	89.440	2.000	7585.06	1306.97	1082.03	1132.60	40°05'29.847"N	104°52'07.377"W	1.53	
9693.00	89.810	2.220	7585.61	1390.48	1166.97	1135.73	40°05'30.686"N	104°52'07.337"W	0.51	
9778.00	90.550	2.320	7585.35	1474.03	1251.91	1139.10	40°05'31.525"N	104°52'07.293"W	0.88	
9864.00	89.750	2.040	7585.12	1558.54	1337.84	1142.37	40°05'32.375"N	104°52'07.251"W	0.99	
9949.00	90.180	1.790	7585.17	1641.99	1422.79	1145.21	40°05'33.214"N	104°52'07.215"W	0.59	
10034.00	91.200	1.660	7584.15	1725.39	1507.75	1147.77	40°05'34.054"N	104°52'07.182"W	1.21	
10119.00	90.030	1.730	7583.24	1808.77	1592.71	1150.28	40°05'34.893"N	104°52'07.149"W	1.38	
10205.00	90.860	2.040	7582.57	1893.20	1678.66	1153.11	40°05'35.742"N	104°52'07.113"W	1.03	
10290.00	89.900	0.640	7582.01	1976.48	1763.63	1155.10	40°05'36.582"N	104°52'07.087"W	2.00	
10375.00	90.740	1.380	7581.53	2059.67	1848.61	1156.60	40°05'37.422"N	104°52'07.068"W	1.32	
10460.00	89.900	359.430	7581.06	2142.66	1933.60	1157.20	40°05'38.262"N	104°52'07.060"W	2.50	

REFERENCE WELLPATH IDENTIFICATION

Operator	KERR-MCGEE OIL & GAS ONSHORE LP	Slot	SLOT#12 SICKLER 26C-34HZ (417'FSL & 1425'FEL, SEC.34)
Area	COLORADO	Well	SICKLER 26C-34HZ
Field	WELD COUNTY (KERR MCGEE)	Wellbore	SICKLER 26C-34HZ AWP
Facility	SEC.34-T2N-R67W		

WELLPATH DATA (170 stations)

MD [ft]	Inclination [°]	Azimuth [°]	TVD [ft]	Vert Sect [ft]	North [ft]	East [ft]	Latitude	Longitude	DLS [°/100ft]	Comments
10546.00	88.610	358.320	7582.17	2226.10	2019.58	1155.51	40°05'39.112"N	104°52'07.082"W	1.98	
10631.00	88.820	357.890	7584.08	2308.28	2104.51	1152.70	40°05'39.951"N	104°52'07.118"W	0.56	
10715.00	89.220	357.820	7585.52	2389.40	2188.44	1149.56	40°05'40.780"N	104°52'07.158"W	0.48	
10801.00	89.190	357.190	7586.71	2472.32	2274.35	1145.81	40°05'41.629"N	104°52'07.206"W	0.73	
10886.00	89.720	357.120	7587.52	2554.14	2359.24	1141.60	40°05'42.468"N	104°52'07.261"W	0.63	
10970.00	90.430	357.370	7587.41	2635.04	2443.14	1137.56	40°05'43.297"N	104°52'07.312"W	0.90	
11055.00	91.290	357.200	7586.13	2716.91	2528.03	1133.53	40°05'44.136"N	104°52'07.364"W	1.03	
11141.00	90.270	357.420	7584.96	2799.76	2613.93	1129.50	40°05'44.985"N	104°52'07.416"W	1.21	
11226.00	88.910	358.180	7585.57	2881.83	2698.86	1126.23	40°05'45.824"N	104°52'07.458"W	1.83	
11311.00	89.500	357.960	7586.75	2964.01	2783.81	1123.37	40°05'46.664"N	104°52'07.495"W	0.74	
11396.00	89.960	358.100	7587.15	3046.17	2868.75	1120.45	40°05'47.503"N	104°52'07.532"W	0.57	
11482.00	90.890	358.100	7586.51	3129.33	2954.70	1117.60	40°05'48.353"N	104°52'07.569"W	1.08	
11567.00	92.370	358.870	7584.09	3211.64	3039.64	1115.35	40°05'49.192"N	104°52'07.598"W	1.96	
11651.00	92.310	359.190	7580.67	3293.13	3123.55	1113.93	40°05'50.021"N	104°52'07.616"W	0.39	
11736.00	89.930	359.060	7579.00	3375.68	3208.52	1112.63	40°05'50.861"N	104°52'07.633"W	2.80	
11821.00	87.530	357.870	7580.89	3457.98	3293.46	1110.36	40°05'51.700"N	104°52'07.662"W	3.15	
11907.00	88.330	357.570	7583.99	3540.94	3379.34	1106.94	40°05'52.549"N	104°52'07.706"W	0.99	
11992.00	88.610	358.520	7586.26	3623.09	3464.26	1104.04	40°05'53.388"N	104°52'07.743"W	1.16	
12077.00	89.010	358.240	7588.03	3705.37	3549.20	1101.64	40°05'54.228"N	104°52'07.774"W	0.57	
12162.00	88.320	358.590	7590.01	3787.66	3634.15	1099.29	40°05'55.067"N	104°52'07.804"W	0.91	
12247.00	89.160	359.760	7591.88	3870.22	3719.12	1098.06	40°05'55.907"N	104°52'07.820"W	1.69	
12333.00	90.120	0.870	7592.42	3954.17	3805.11	1098.54	40°05'56.756"N	104°52'07.814"W	1.71	
12418.00	90.000	0.760	7592.33	4037.30	3890.10	1099.74	40°05'57.596"N	104°52'07.798"W	0.19	
12503.00	90.760	0.750	7591.77	4120.40	3975.09	1100.86	40°05'58.436"N	104°52'07.784"W	0.89	
12589.00	91.020	1.060	7590.43	4204.53	4061.07	1102.22	40°05'59.286"N	104°52'07.766"W	0.47	
12674.00	91.660	0.750	7588.44	4287.66	4146.04	1103.57	40°06'00.126"N	104°52'07.749"W	0.84	
12757.00	90.710	0.430	7586.73	4368.75	4229.01	1104.42	40°06'00.946"N	104°52'07.738"W	1.21	
12842.00	91.420	0.450	7585.15	4451.74	4314.00	1105.07	40°06'01.785"N	104°52'07.729"W	0.84	
12927.00	89.810	0.160	7584.23	4534.70	4398.99	1105.52	40°06'02.625"N	104°52'07.723"W	1.92	
13012.00	89.870	359.460	7584.47	4617.51	4483.99	1105.24	40°06'03.465"N	104°52'07.727"W	0.83	
13097.00	90.670	359.190	7584.07	4700.14	4568.98	1104.24	40°06'04.305"N	104°52'07.740"W	0.99	
13182.00	89.840	359.790	7583.69	4782.84	4653.97	1103.48	40°06'05.145"N	104°52'07.750"W	1.20	
13268.00	90.150	359.370	7583.70	4866.54	4739.97	1102.85	40°06'05.995"N	104°52'07.758"W	0.61	
13304.00	90.520	359.430	7583.49	4901.55	4775.97	1102.48	40°06'06.351"N	104°52'07.762"W	1.04	LAST BHI MWD+IFR SURVEY
13355.00	90.520	359.430	7583.03	4951.15	4826.96	1101.97	40°06'06.855"N	104°52'07.769"W	0.00	PROJECTION TO BIT

Actual Wellpath Report

SICKLER 26C-34HZ AWP

Page 6 of 7

REFERENCE WELLPATH IDENTIFICATION

Operator	KERR-MCGEE OIL & GAS ONSHORE LP	Slot	SLOT#12 SICKLER 26C-34HZ (417'FSL & 1425'FEL, SEC.34)
Area	COLORADO	Well	SICKLER 26C-34HZ
Field	WELD COUNTY (KERR MCGEE)	Wellbore	SICKLER 26C-34HZ AWB
Facility	SEC.34-T2N-R67W		

HOLE & CASING SECTIONS - Ref Wellbore: SICKLER 26C-34HZ AWB Ref Wellpath: SICKLER 26C-34HZ AWP

String/Diameter	Start MD [ft]	End MD [ft]	Interval [ft]	Start TVD [ft]	End TVD [ft]	Start N/S [ft]	Start E/W [ft]	End N/S [ft]	End E/W [ft]
13.5in Open Hole	16.00	1291.00	1275.00	16.00	1290.95	0.00	0.00	-6.63	-5.50
9.625in Casing Surface	16.00	1281.00	1265.00	16.00	1280.95	0.00	0.00	-6.65	-5.58
8.75in Open Hole	1291.00	8245.00	6954.00	1290.95	7585.46	-6.63	-5.50	-280.42	1158.38
7in Casing Intermediate	16.00	8235.00	8219.00	16.00	7585.06	0.00	0.00	-290.41	1158.30
6.125in Open Hole	8245.00	13355.00	5110.00	7585.46	7583.03	-280.42	1158.38	4826.96	1101.97

WELLPATH COMPOSITION - Ref Wellbore: SICKLER 26C-34HZ AWB Ref Wellpath: SICKLER 26C-34HZ AWP

Start MD [ft]	End MD [ft]	Positional Uncertainty Model	Log Name/Comment	Wellbore
16.00	1204.00	Generic gyro - continuous (Standard)	MS GYRO SURVEYS <116-1204>	SICKLER 26C-34HZ AWB
1204.00	8246.00	NaviTrak (MAGCORR,IFR)	BHI NAVITRAK MWD+IFR 8 3/4" <1308-8246>	SICKLER 26C-34HZ AWB
8246.00	13304.00	NaviTrak (MAGCORR,IFR)	BHI NAVITRAK MWD+IFR 6 1/8" <8331-13304>	SICKLER 26C-34HZ AWB
13304.00	13355.00	Blind Drilling (std)	Projection to bit	SICKLER 26C-34HZ AWB

Actual Wellpath Report

SICKLER 26C-34HZ AWP

Page 7 of 7

REFERENCE WELLPATH IDENTIFICATION				
Operator	KERR-MCGEE OIL & GAS ONSHORE LP	Slot	SLOT#12 SICKLER 26C-34HZ (417'FSL & 1425'FEL, SEC.34)	
Area	COLORADO	Well	SICKLER 26C-34HZ	
Field	WELD COUNTY (KERR MCGEE)	Wellbore	SICKLER 26C-34HZ AWB	
Facility	SEC.34-T2N-R67W			

WELLPATH COMMENTS				
MD [ft]	Inclination [°]	Azimuth [°]	TVD [ft]	Comment
16.00	0.000	244.460	16.00	TIE ON
116.00	0.380	244.460	116.00	BEGIN GYRO SURVEYS
1204.00	0.240	198.250	1203.95	TIE ONTO GYRO SURVEYS
1308.00	0.660	70.510	1307.95	BEGIN BHI MWD+IFR SURVEYS
8235.00	87.407	0.579	7585.06	7" CASING POINT
13304.00	90.520	359.430	7583.49	LAST BHI MWD+IFR SURVEY
13355.00	90.520	359.430	7583.03	PROJECTION TO BIT