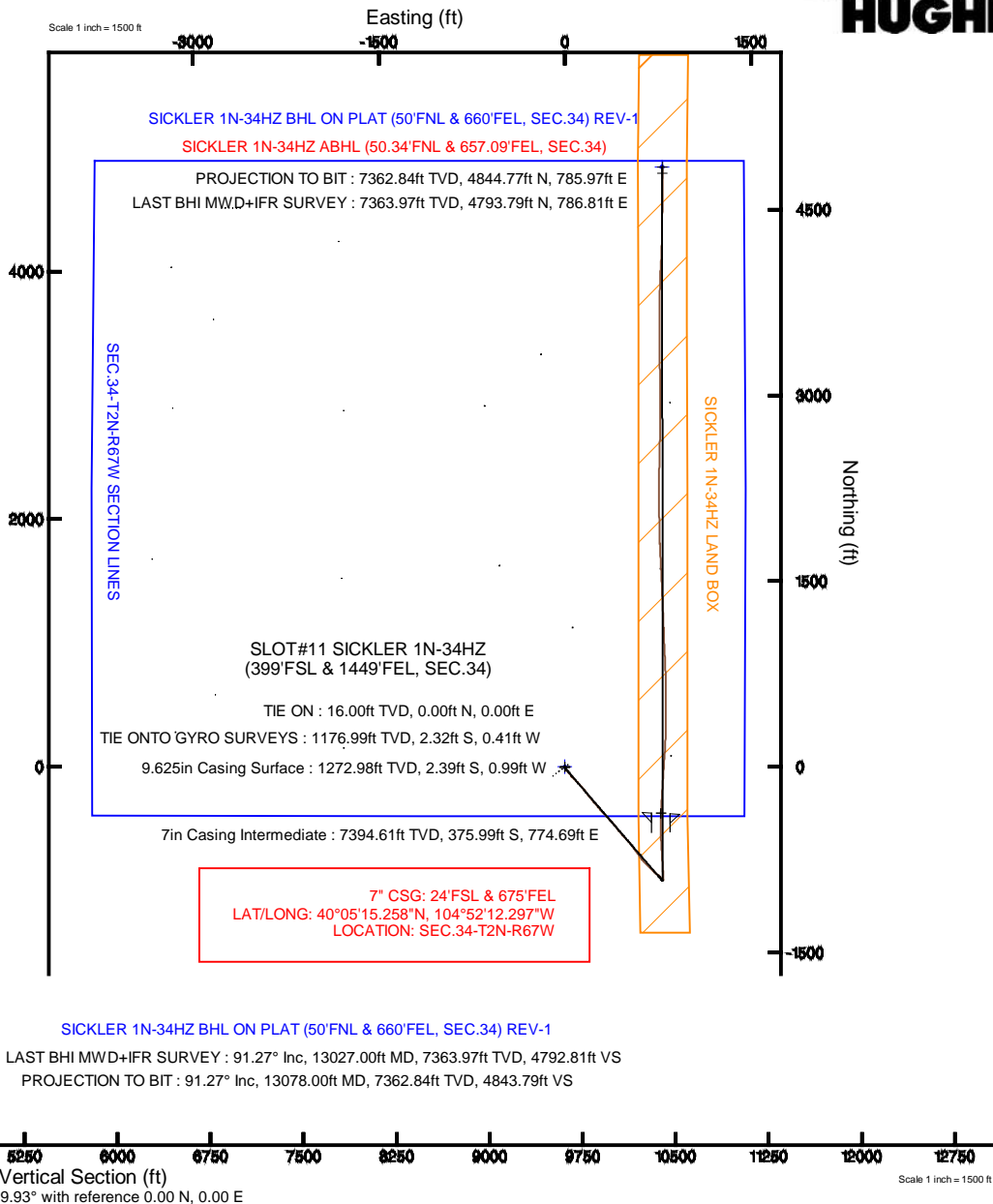
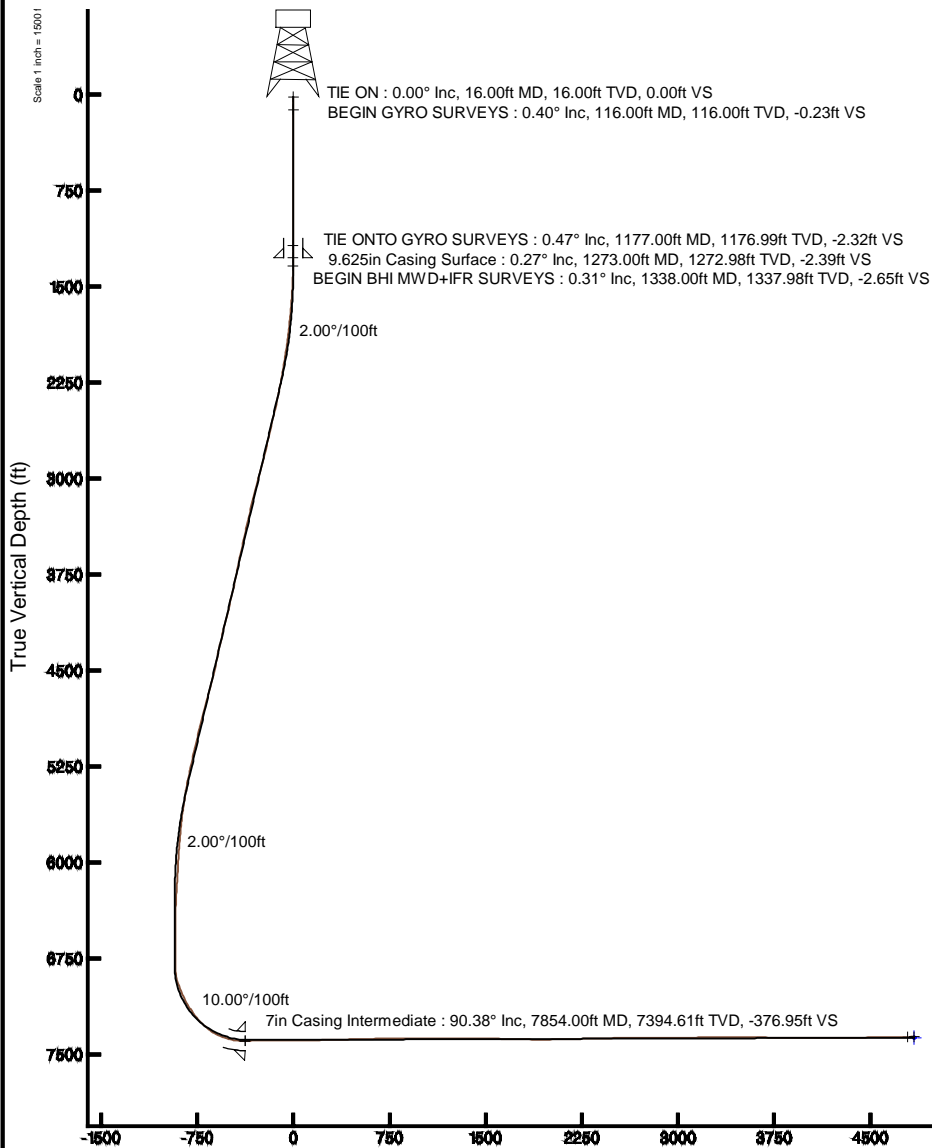


KERR-MCGEE OIL & GAS ONSHORE LP

Location: COLORADO Slot: SLOT#11 SICKLER 1N-34HZ (399'FSL & 1449'FEL, SEC.34)
 Field: WELD COUNTY (KERR MCGEE) Well: SICKLER 1N-34HZ
 Facility: SEC.34-T2N-R67W Wellbore: SICKLER 1N-34HZ PWB

Plot reference wellpath is SICKLER 1N-34HZ (REV-B.1) PWP

| | |
|--|--|
| True vertical depths are referenced to XTREME 6 (16'RKB) (RKB) | Grid System: NAD83 / Lambert Colorado SP, Northern Zone (501), US feet |
| Measured depths are referenced to XTREME 6 (16'RKB) (RKB) | North Reference: True north |
| XTREME 6 (16'RKB) (RKB) to Mean Sea Level: 4965 feet | Scale: True distance |
| Mean Sea Level to Mud line (At Slot: SLOT#11 SICKLER 1N-34HZ (399'FSL & 1449'FEL, SEC.34)): 0 feet | Depths are in feet |
| Coordinates are in feet referenced to Slot | Created by: robiale01 on 28/Jul/2014 |



Azimuth 359.93° with reference 0.00 N, 0.00 E

Scale 1 inch = 1500'

Actual Wellpath Report

SICKLER 1N-34HZ AWP

Page 1 of 6

REFERENCE WELLPATH IDENTIFICATION

| | | | |
|----------|--|----------|---|
| Operator | KERR-MCGEE OIL & GAS ONSHORE LP | Slot | SLOT#11 SICKLER 1N-34HZ (399'FSL & 1449'FEL, SEC.34) |
| Area | COLORADO | Well | SICKLER 1N-34HZ |
| Field | WELD COUNTY (KERR MCGEE) | Wellbore | SICKLER 1N-34HZ AWP |
| Facility | SEC.34-T2N-R67W | | |

REPORT SETUP INFORMATION

| | | | |
|---------------------|--|----------------------|--|
| Projection System | NAD83 / Lambert Colorado SP, Northern Zone (501), US feet | Software System | WellArchitect® 4.0.0 |
| North Reference | True | User | Robiale01 |
| Scale | 0.999961 | Report Generated | 28/Jul/2014 at 09:37 |
| Convergence at slot | n/a | Database/Source file | WellArchitectDB/SICKLER_1N-34HZ_AWP.xml |

WELLPATH LOCATION

| | Local coordinates | | Grid coordinates | | Geographic coordinates | |
|-----------------------|-------------------|----------|-------------------|-------------------|------------------------|------------------------|
| | North[ft] | East[ft] | Easting[US ft] | Northing[US ft] | Latitude | Longitude |
| Slot Location | -4514.97 | 2618.24 | 3175468.28 | 1275743.56 | 40°05'18.974"N | 104°52'22.264"W |
| Facility Reference Pt | | | 3172818.76 | 1280239.99 | 40°06'03.593"N | 104°52'55.951"W |
| Field Reference Pt | | | 3197771.84 | 1268891.29 | 40°04'09.600"N | 104°47'36.000"W |

WELLPATH DATUM

| | | | |
|--------------------------|--------------------------------|--|--------------------------|
| Calculation method | Minimum curvature | XTREME 6 (16'RKB) (RKB) to Facility Vertical Datum | 4965.00ft |
| Horizontal Reference Pt | Slot | XTREME 6 (16'RKB) (RKB) to Mean Sea Level | 4965.00ft |
| Vertical Reference Pt | XTREME 6 (16'RKB) (RKB) | XTREME 6 (16'RKB) (RKB) to Mud Line at Slot (SLOT#11 SICKLER 1N-34HZ (399'FSL & 1449'FEL, SEC.34)) | 4965.00ft |
| MD Reference Pt | XTREME 6 (16'RKB) (RKB) | Section Origin | N 0.00, E 0.00 ft |
| Field Vertical Reference | Mean Sea Level | Section Azimuth | 9.21° |

Actual Wellpath Report

SICKLER 1N-34HZ AWP

Page 2 of 6

| REFERENCE WELLPATH IDENTIFICATION | | | |
|-----------------------------------|---------------------------------|----------|--|
| Operator | KERR-MCGEE OIL & GAS ONSHORE LP | Slot | SLOT#11 SICKLER 1N-34HZ (399'FSL & 1449'FEL, SEC.34) |
| Area | COLORADO | Well | SICKLER 1N-34HZ |
| Field | WELD COUNTY (KERR MCGEE) | Wellbore | SICKLER 1N-34HZ AWP |
| Facility | SEC.34-T2N-R67W | | |

| WELLPATH DATA (120 stations) † = interpolated/extrapolated station | | | | | | | | | | |
|--|-----------------|-------------|----------|----------------|------------|-----------|----------------|-----------------|---------------|---------------------------|
| MD [ft] | Inclination [°] | Azimuth [°] | TVD [ft] | Vert Sect [ft] | North [ft] | East [ft] | Latitude | Longitude | DLS [°/100ft] | Comments |
| 0.00† | 0.000 | 227.780 | 0.00 | 0.00 | 0.00 | 0.00 | 40°05'18.974"N | 104°52'22.264"W | 0.00 | |
| 16.00 | 0.000 | 227.780 | 16.00 | 0.00 | 0.00 | 0.00 | 40°05'18.974"N | 104°52'22.264"W | 0.00 | TIE ON |
| 116.00 | 0.400 | 227.780 | 116.00 | -0.27 | -0.23 | -0.26 | 40°05'18.972"N | 104°52'22.267"W | 0.40 | BEGIN GYRO SURVEYS |
| 216.00 | 0.170 | 296.080 | 216.00 | -0.50 | -0.40 | -0.65 | 40°05'18.970"N | 104°52'22.272"W | 0.37 | |
| 316.00 | 0.170 | 78.970 | 316.00 | -0.41 | -0.31 | -0.64 | 40°05'18.971"N | 104°52'22.272"W | 0.32 | |
| 416.00 | 0.380 | 97.900 | 416.00 | -0.35 | -0.33 | -0.16 | 40°05'18.971"N | 104°52'22.266"W | 0.23 | |
| 516.00 | 0.370 | 142.090 | 515.99 | -0.56 | -0.63 | 0.36 | 40°05'18.968"N | 104°52'22.259"W | 0.28 | |
| 616.00 | 0.330 | 177.050 | 615.99 | -1.06 | -1.17 | 0.58 | 40°05'18.962"N | 104°52'22.257"W | 0.21 | |
| 716.00 | 0.210 | 270.640 | 715.99 | -1.37 | -1.46 | 0.41 | 40°05'18.960"N | 104°52'22.259"W | 0.40 | |
| 816.00 | 0.230 | 358.380 | 815.99 | -1.20 | -1.25 | 0.22 | 40°05'18.962"N | 104°52'22.261"W | 0.31 | |
| 916.00 | 0.220 | 136.180 | 915.99 | -1.12 | -1.19 | 0.35 | 40°05'18.962"N | 104°52'22.260"W | 0.42 | |
| 1016.00 | 0.370 | 177.880 | 1015.99 | -1.55 | -1.65 | 0.49 | 40°05'18.958"N | 104°52'22.258"W | 0.25 | |
| 1116.00 | 0.550 | 240.010 | 1115.99 | -2.17 | -2.21 | 0.09 | 40°05'18.952"N | 104°52'22.263"W | 0.50 | |
| 1177.00 | 0.470 | 278.400 | 1176.99 | -2.36 | -2.32 | -0.41 | 40°05'18.951"N | 104°52'22.269"W | 0.56 | TIE ONTO GYRO SURVEYS |
| 1338.00 | 0.310 | 192.510 | 1337.98 | -2.80 | -2.65 | -1.16 | 40°05'18.948"N | 104°52'22.279"W | 0.34 | BEGIN BHI MWD+IFR SURVEYS |
| 1429.00 | 1.920 | 155.100 | 1428.96 | -4.31 | -4.28 | -0.57 | 40°05'18.932"N | 104°52'22.271"W | 1.85 | |
| 1521.00 | 3.990 | 153.520 | 1520.84 | -8.19 | -8.54 | 1.50 | 40°05'18.890"N | 104°52'22.245"W | 2.25 | |
| 1611.00 | 5.640 | 147.110 | 1610.52 | -14.01 | -15.06 | 5.30 | 40°05'18.825"N | 104°52'22.196"W | 1.93 | |
| 1702.00 | 6.690 | 134.700 | 1700.99 | -20.41 | -22.54 | 11.50 | 40°05'18.751"N | 104°52'22.116"W | 1.86 | |
| 1794.00 | 7.720 | 143.050 | 1792.27 | -27.80 | -31.25 | 19.02 | 40°05'18.665"N | 104°52'22.019"W | 1.59 | |
| 1886.00 | 8.880 | 145.780 | 1883.30 | -37.24 | -42.06 | 26.73 | 40°05'18.558"N | 104°52'21.920"W | 1.33 | |
| 1977.00 | 10.080 | 138.180 | 1973.06 | -47.34 | -53.80 | 35.99 | 40°05'18.442"N | 104°52'21.801"W | 1.90 | |
| 2068.00 | 11.460 | 141.200 | 2062.46 | -58.40 | -66.78 | 46.97 | 40°05'18.314"N | 104°52'21.660"W | 1.64 | |
| 2159.00 | 13.030 | 138.170 | 2151.38 | -70.90 | -81.47 | 59.47 | 40°05'18.169"N | 104°52'21.499"W | 1.86 | |
| 2249.00 | 14.740 | 136.640 | 2238.75 | -84.24 | -97.36 | 74.10 | 40°05'18.012"N | 104°52'21.311"W | 1.94 | |
| 2340.00 | 15.590 | 133.600 | 2326.58 | -98.18 | -114.21 | 90.91 | 40°05'17.845"N | 104°52'21.094"W | 1.28 | |
| 2430.00 | 16.990 | 135.520 | 2412.97 | -112.79 | -131.93 | 108.88 | 40°05'17.670"N | 104°52'20.863"W | 1.67 | |
| 2521.00 | 17.340 | 140.080 | 2499.92 | -129.54 | -151.82 | 126.90 | 40°05'17.474"N | 104°52'20.631"W | 1.53 | |
| 2703.00 | 15.980 | 141.210 | 2674.28 | -164.05 | -192.15 | 160.00 | 40°05'17.075"N | 104°52'20.205"W | 0.77 | |
| 2789.00 | 16.920 | 143.230 | 2756.76 | -180.67 | -211.40 | 174.90 | 40°05'16.885"N | 104°52'20.014"W | 1.28 | |
| 2874.00 | 19.310 | 141.700 | 2837.54 | -198.75 | -232.34 | 191.02 | 40°05'16.678"N | 104°52'19.806"W | 2.87 | |
| 3044.00 | 17.580 | 140.840 | 2998.80 | -234.79 | -274.31 | 224.66 | 40°05'16.263"N | 104°52'19.374"W | 1.03 | |
| 3212.00 | 18.000 | 139.850 | 3158.76 | -268.55 | -313.82 | 257.42 | 40°05'15.873"N | 104°52'18.952"W | 0.31 | |
| 3382.00 | 17.100 | 138.190 | 3320.85 | -301.38 | -352.53 | 291.02 | 40°05'15.490"N | 104°52'18.520"W | 0.61 | |
| 3553.00 | 16.460 | 136.050 | 3484.57 | -331.72 | -388.71 | 324.59 | 40°05'15.133"N | 104°52'18.088"W | 0.52 | |
| 3723.00 | 16.370 | 137.390 | 3647.64 | -360.96 | -423.68 | 357.52 | 40°05'14.787"N | 104°52'17.664"W | 0.23 | |
| 3894.00 | 15.050 | 138.820 | 3812.25 | -390.01 | -458.13 | 388.46 | 40°05'14.447"N | 104°52'17.266"W | 0.80 | |
| 4064.00 | 17.510 | 141.970 | 3975.43 | -421.45 | -494.89 | 418.75 | 40°05'14.083"N | 104°52'16.876"W | 1.54 | |
| 4235.00 | 16.660 | 142.360 | 4138.88 | -455.67 | -534.57 | 449.57 | 40°05'13.691"N | 104°52'16.480"W | 0.50 | |
| 4405.00 | 17.980 | 135.920 | 4301.18 | -488.03 | -572.72 | 482.71 | 40°05'13.314"N | 104°52'16.053"W | 1.37 | |
| 4576.00 | 14.520 | 137.330 | 4465.33 | -517.04 | -607.45 | 515.61 | 40°05'12.971"N | 104°52'15.630"W | 2.04 | |
| 4744.00 | 18.800 | 143.730 | 4626.25 | -549.04 | -644.78 | 545.91 | 40°05'12.602"N | 104°52'15.240"W | 2.77 | |
| 4914.00 | 18.230 | 143.690 | 4787.45 | -586.87 | -688.29 | 577.86 | 40°05'12.172"N | 104°52'14.829"W | 0.34 | |
| 5084.00 | 16.850 | 145.700 | 4949.54 | -623.37 | -730.08 | 607.50 | 40°05'11.759"N | 104°52'14.448"W | 0.89 | |
| 5254.00 | 17.680 | 135.900 | 5111.92 | -656.67 | -768.98 | 639.35 | 40°05'11.375"N | 104°52'14.038"W | 1.78 | |

| REFERENCE WELLPATH IDENTIFICATION | | | | |
|-----------------------------------|---------------------------------|--|----------|--|
| Operator | KERR-MCGEE OIL & GAS ONSHORE LP | | Slot | SLOT#11 SICKLER 1N-34HZ (399'FSL & 1449'FEL, SEC.34) |
| Area | COLORADO | | Well | SICKLER 1N-34HZ |
| Field | WELD COUNTY (KERR MCGEE) | | Wellbore | SICKLER 1N-34HZ AWP |
| Facility | SEC.34-T2N-R67W | | | |

| WELLPATH DATA (120 stations) † = interpolated/extrapolated station | | | | | | | | | | |
|--|-----------------|-------------|----------|----------------|------------|-----------|----------------|-----------------|---------------|-----------------|
| MD [ft] | Inclination [°] | Azimuth [°] | TVD [ft] | Vert Sect [ft] | North [ft] | East [ft] | Latitude | Longitude | DLS [°/100ft] | Comments |
| 5424.00 | 16.790 | 135.210 | 5274.28 | -686.52 | -804.94 | 674.62 | 40°05'11.019"N | 104°52'13.584"W | 0.54 | |
| 5509.00 | 15.550 | 136.290 | 5355.92 | -700.61 | -821.89 | 691.14 | 40°05'10.852"N | 104°52'13.372"W | 1.50 | |
| 5594.00 | 14.010 | 130.760 | 5438.11 | -712.86 | -836.84 | 706.81 | 40°05'10.704"N | 104°52'13.170"W | 2.46 | |
| 5679.00 | 13.110 | 131.990 | 5520.74 | -723.46 | -850.01 | 721.77 | 40°05'10.574"N | 104°52'12.978"W | 1.11 | |
| 5765.00 | 12.560 | 131.170 | 5604.59 | -733.69 | -862.69 | 736.05 | 40°05'10.449"N | 104°52'12.794"W | 0.67 | |
| 5849.00 | 9.410 | 130.980 | 5687.04 | -742.14 | -873.21 | 748.12 | 40°05'10.345"N | 104°52'12.639"W | 3.75 | |
| 5934.00 | 7.550 | 132.240 | 5771.11 | -748.84 | -881.52 | 757.50 | 40°05'10.263"N | 104°52'12.518"W | 2.20 | |
| 6019.00 | 6.380 | 129.160 | 5855.48 | -754.24 | -888.26 | 765.29 | 40°05'10.196"N | 104°52'12.418"W | 1.44 | |
| 6104.00 | 5.450 | 130.560 | 5940.02 | -758.70 | -893.87 | 772.02 | 40°05'10.141"N | 104°52'12.331"W | 1.11 | |
| 6190.00 | 4.640 | 129.540 | 6025.69 | -762.58 | -898.74 | 777.81 | 40°05'10.092"N | 104°52'12.257"W | 0.95 | |
| 6275.00 | 4.990 | 137.020 | 6110.39 | -766.58 | -903.63 | 782.98 | 40°05'10.044"N | 104°52'12.190"W | 0.84 | |
| 6360.00 | 4.650 | 135.010 | 6195.09 | -770.87 | -908.77 | 787.94 | 40°05'09.993"N | 104°52'12.127"W | 0.45 | |
| 6446.00 | 3.350 | 161.230 | 6280.89 | -775.12 | -913.62 | 791.21 | 40°05'09.945"N | 104°52'12.084"W | 2.57 | |
| 6531.00 | 3.320 | 158.640 | 6365.74 | -779.44 | -918.26 | 792.90 | 40°05'09.899"N | 104°52'12.063"W | 0.18 | |
| 6616.00 | 0.240 | 121.120 | 6450.69 | -781.62 | -920.64 | 793.95 | 40°05'09.876"N | 104°52'12.049"W | 3.69 | |
| 6701.00 | 0.520 | 24.590 | 6535.69 | -781.32 | -920.39 | 794.27 | 40°05'09.878"N | 104°52'12.045"W | 0.70 | |
| 6785.00 | 0.120 | 142.220 | 6619.69 | -781.01 | -920.11 | 794.48 | 40°05'09.881"N | 104°52'12.042"W | 0.70 | |
| 6870.00 | 0.120 | 287.700 | 6704.69 | -781.06 | -920.15 | 794.45 | 40°05'09.881"N | 104°52'12.043"W | 0.27 | |
| 6956.00 | 0.400 | 102.630 | 6790.69 | -781.06 | -920.19 | 794.66 | 40°05'09.880"N | 104°52'12.040"W | 0.60 | |
| 6998.00 | 2.270 | 2.020 | 6832.68 | -780.24 | -919.39 | 794.83 | 40°05'09.888"N | 104°52'12.038"W | 5.66 | |
| 7041.00 | 7.940 | 356.570 | 6875.49 | -776.50 | -915.57 | 794.68 | 40°05'09.926"N | 104°52'12.040"W | 13.22 | |
| 7083.00 | 15.060 | 355.710 | 6916.62 | -768.35 | -907.22 | 794.10 | 40°05'10.009"N | 104°52'12.047"W | 16.96 | |
| 7126.00 | 20.040 | 356.130 | 6957.61 | -755.74 | -894.29 | 793.18 | 40°05'10.136"N | 104°52'12.059"W | 11.59 | |
| 7168.00 | 22.260 | 357.450 | 6996.77 | -740.94 | -879.17 | 792.34 | 40°05'10.286"N | 104°52'12.070"W | 5.41 | |
| 7211.00 | 24.850 | 357.150 | 7036.19 | -724.13 | -862.00 | 791.53 | 40°05'10.455"N | 104°52'12.080"W | 6.03 | |
| 7254.00 | 27.560 | 357.240 | 7074.76 | -705.55 | -843.04 | 790.60 | 40°05'10.643"N | 104°52'12.092"W | 6.30 | |
| 7296.00 | 29.990 | 356.630 | 7111.58 | -685.80 | -822.85 | 789.52 | 40°05'10.842"N | 104°52'12.106"W | 5.83 | |
| 7339.00 | 33.300 | 356.910 | 7148.18 | -663.78 | -800.33 | 788.25 | 40°05'11.065"N | 104°52'12.122"W | 7.71 | |
| 7382.00 | 35.650 | 355.900 | 7183.62 | -640.04 | -776.04 | 786.72 | 40°05'11.305"N | 104°52'12.142"W | 5.62 | |
| 7424.00 | 39.800 | 356.110 | 7216.84 | -615.03 | -750.41 | 784.93 | 40°05'11.558"N | 104°52'12.165"W | 9.89 | |
| 7467.00 | 43.820 | 356.490 | 7248.88 | -587.09 | -721.81 | 783.08 | 40°05'11.841"N | 104°52'12.189"W | 9.37 | |
| 7510.00 | 48.830 | 356.780 | 7278.56 | -556.75 | -690.77 | 781.26 | 40°05'12.148"N | 104°52'12.212"W | 11.66 | |
| 7552.00 | 53.700 | 356.760 | 7304.84 | -524.77 | -658.07 | 779.42 | 40°05'12.471"N | 104°52'12.236"W | 11.60 | |
| 7595.00 | 58.410 | 356.400 | 7328.84 | -489.97 | -622.47 | 777.29 | 40°05'12.822"N | 104°52'12.263"W | 10.98 | |
| 7637.00 | 63.570 | 357.150 | 7349.20 | -454.11 | -585.81 | 775.23 | 40°05'13.185"N | 104°52'12.290"W | 12.38 | |
| 7680.00 | 69.150 | 358.440 | 7366.44 | -415.52 | -546.47 | 773.72 | 40°05'13.574"N | 104°52'12.309"W | 13.26 | |
| 7722.00 | 74.390 | 358.670 | 7379.57 | -376.33 | -506.60 | 772.72 | 40°05'13.968"N | 104°52'12.322"W | 12.49 | |
| 7765.00 | 80.580 | 0.060 | 7388.89 | -334.99 | -464.65 | 772.26 | 40°05'14.382"N | 104°52'12.328"W | 14.74 | |
| 7815.00 | 87.740 | 1.930 | 7393.97 | -285.79 | -414.95 | 773.13 | 40°05'14.873"N | 104°52'12.317"W | 14.79 | |
| 7854.00† | 90.385 | 2.675 | 7394.61 | -247.08 | -375.99 | 774.69 | 40°05'15.258"N | 104°52'12.297"W | 7.05 | 7" CASING POINT |
| 7870.00 | 91.470 | 2.980 | 7394.35 | -231.18 | -360.01 | 775.48 | 40°05'15.416"N | 104°52'12.287"W | 7.05 | |
| 7906.00 | 91.500 | 2.820 | 7393.42 | -195.41 | -324.07 | 777.30 | 40°05'15.771"N | 104°52'12.263"W | 0.45 | |
| 7989.00 | 90.920 | 3.320 | 7391.67 | -112.91 | -241.21 | 781.75 | 40°05'16.590"N | 104°52'12.206"W | 0.92 | |
| 8074.00 | 90.680 | 3.430 | 7390.48 | -28.36 | -156.37 | 786.75 | 40°05'17.429"N | 104°52'12.142"W | 0.31 | |
| 8159.00 | 90.090 | 3.920 | 7389.91 | 56.24 | -71.54 | 792.20 | 40°05'18.267"N | 104°52'12.071"W | 0.90 | |

REFERENCE WELLPATH IDENTIFICATION

| | | | |
|----------|--|----------|---|
| Operator | KERR-MCGEE OIL & GAS ONSHORE LP | Slot | SLOT#11 SICKLER 1N-34HZ (399'FSL & 1449'FEL, SEC.34) |
| Area | COLORADO | Well | SICKLER 1N-34HZ |
| Field | WELD COUNTY (KERR MCGEE) | Wellbore | SICKLER 1N-34HZ AWB |
| Facility | SEC.34-T2N-R67W | | |

WELLPATH DATA (120 stations)

| MD [ft] | Inclination [°] | Azimuth [°] | TVD [ft] | Vert Sect [ft] | North [ft] | East [ft] | Latitude | Longitude | DLS [°/100ft] | Comments |
|----------|-----------------|-------------|----------|----------------|------------|-----------|----------------|-----------------|---------------|-------------------------|
| 8330.00 | 90.060 | 4.200 | 7389.68 | 226.55 | 99.03 | 804.30 | 40°05'19.952"N | 104°52'11.916"W | 0.16 | |
| 8500.00 | 91.540 | 1.080 | 7387.31 | 395.39 | 268.81 | 812.13 | 40°05'21.630"N | 104°52'11.815"W | 2.03 | |
| 8671.00 | 91.200 | 359.770 | 7383.22 | 564.33 | 439.75 | 813.40 | 40°05'23.320"N | 104°52'11.798"W | 0.79 | |
| 8841.00 | 91.450 | 0.020 | 7379.29 | 732.04 | 609.70 | 813.09 | 40°05'24.999"N | 104°52'11.802"W | 0.21 | |
| 9011.00 | 90.400 | 357.950 | 7376.55 | 899.30 | 779.64 | 810.08 | 40°05'26.678"N | 104°52'11.841"W | 1.37 | |
| 9182.00 | 90.270 | 357.160 | 7375.55 | 1066.77 | 950.48 | 802.78 | 40°05'28.367"N | 104°52'11.935"W | 0.47 | |
| 9352.00 | 89.560 | 358.050 | 7375.80 | 1233.29 | 1120.33 | 795.68 | 40°05'30.045"N | 104°52'12.026"W | 0.67 | |
| 9522.00 | 89.960 | 357.770 | 7376.51 | 1399.99 | 1290.21 | 789.48 | 40°05'31.724"N | 104°52'12.106"W | 0.29 | |
| 9692.00 | 89.590 | 357.150 | 7377.18 | 1566.42 | 1460.05 | 781.95 | 40°05'33.402"N | 104°52'12.203"W | 0.42 | |
| 9863.00 | 89.440 | 357.060 | 7378.63 | 1733.61 | 1630.82 | 773.31 | 40°05'35.090"N | 104°52'12.314"W | 0.10 | |
| 10033.00 | 88.170 | 357.760 | 7382.17 | 1899.97 | 1800.61 | 765.63 | 40°05'36.768"N | 104°52'12.412"W | 0.85 | |
| 10204.00 | 90.610 | 359.330 | 7383.99 | 2067.99 | 1971.52 | 761.29 | 40°05'38.457"N | 104°52'12.468"W | 1.70 | |
| 10374.00 | 91.490 | 358.840 | 7380.88 | 2235.31 | 2141.47 | 758.57 | 40°05'40.136"N | 104°52'12.503"W | 0.59 | |
| 10544.00 | 90.860 | 1.100 | 7377.39 | 2403.05 | 2311.42 | 758.49 | 40°05'41.816"N | 104°52'12.504"W | 1.38 | |
| 10715.00 | 91.520 | 1.560 | 7373.84 | 2572.40 | 2482.34 | 762.45 | 40°05'43.505"N | 104°52'12.453"W | 0.47 | |
| 10884.00 | 90.180 | 0.900 | 7371.33 | 2739.74 | 2651.28 | 766.08 | 40°05'45.174"N | 104°52'12.406"W | 0.88 | |
| 11054.00 | 90.550 | 0.010 | 7370.25 | 2907.75 | 2821.26 | 767.43 | 40°05'46.854"N | 104°52'12.389"W | 0.57 | |
| 11224.00 | 90.000 | 0.030 | 7369.43 | 3075.56 | 2991.26 | 767.49 | 40°05'48.534"N | 104°52'12.388"W | 0.32 | |
| 11394.00 | 90.650 | 359.130 | 7368.47 | 3243.16 | 3161.25 | 766.24 | 40°05'50.214"N | 104°52'12.404"W | 0.65 | |
| 11565.00 | 90.520 | 359.980 | 7366.72 | 3411.72 | 3332.24 | 764.92 | 40°05'51.904"N | 104°52'12.421"W | 0.50 | |
| 11735.00 | 89.380 | 0.330 | 7366.87 | 3579.60 | 3502.23 | 765.38 | 40°05'53.584"N | 104°52'12.415"W | 0.70 | |
| 11905.00 | 89.600 | 359.600 | 7368.38 | 3747.38 | 3672.22 | 765.27 | 40°05'55.263"N | 104°52'12.416"W | 0.45 | |
| 12076.00 | 90.030 | 0.610 | 7368.94 | 3916.22 | 3843.22 | 765.59 | 40°05'56.953"N | 104°52'12.412"W | 0.64 | |
| 12246.00 | 89.870 | 3.120 | 7369.08 | 4084.81 | 4013.12 | 771.12 | 40°05'58.632"N | 104°52'12.341"W | 1.48 | |
| 12416.00 | 89.840 | 2.350 | 7369.51 | 4253.72 | 4182.92 | 779.23 | 40°06'00.310"N | 104°52'12.237"W | 0.45 | |
| 12585.00 | 90.300 | 0.970 | 7369.31 | 4421.25 | 4351.85 | 784.13 | 40°06'01.980"N | 104°52'12.173"W | 0.86 | |
| 12755.00 | 90.580 | 0.250 | 7368.00 | 4589.33 | 4521.83 | 785.94 | 40°06'03.659"N | 104°52'12.150"W | 0.45 | |
| 12925.00 | 90.860 | 0.570 | 7365.87 | 4757.32 | 4691.81 | 787.15 | 40°06'05.339"N | 104°52'12.134"W | 0.25 | |
| 13027.00 | 91.270 | 359.050 | 7363.97 | 4857.92 | 4793.79 | 786.81 | 40°06'06.347"N | 104°52'12.139"W | 1.54 | LAST BHI MWD+IFR SURVEY |
| 13078.00 | 91.270 | 359.050 | 7362.84 | 4908.11 | 4844.77 | 785.97 | 40°06'06.851"N | 104°52'12.150"W | 0.00 | PROJECTION TO BIT |

HOLE & CASING SECTIONS - Ref Wellbore: SICKLER 1N-34HZ AWB Ref Wellpath: SICKLER 1N-34HZ AWP

| String/Diameter | Start MD [ft] | End MD [ft] | Interval [ft] | Start TVD [ft] | End TVD [ft] | Start N/S [ft] | Start E/W [ft] | End N/S [ft] | End E/W [ft] |
|-------------------------|---------------|-------------|---------------|----------------|--------------|----------------|----------------|--------------|--------------|
| 13.5in Open Hole | 16.00 | 1283.00 | 1267.00 | 16.00 | 1282.98 | 0.00 | 0.00 | -2.42 | -1.03 |
| 9.625in Casing Surface | 16.00 | 1273.00 | 1257.00 | 16.00 | 1272.98 | 0.00 | 0.00 | -2.39 | -0.99 |
| 8.75in Open Hole | 1283.00 | 7864.00 | 6581.00 | 1282.98 | 7394.48 | -2.42 | -1.03 | -366.00 | 775.17 |
| 7in Casing Intermediate | 16.00 | 7854.00 | 7838.00 | 16.00 | 7394.61 | 0.00 | 0.00 | -375.99 | 774.69 |
| 6.125in Open Hole | 7864.00 | 13078.00 | 5214.00 | 7394.48 | 7362.84 | -366.00 | 775.17 | 4844.77 | 785.97 |

Actual Wellpath Report

SICKLER 1N-34HZ AWP

Page 5 of 6

REFERENCE WELLPATH IDENTIFICATION

| | | | |
|----------|--|----------|---|
| Operator | KERR-MCGEE OIL & GAS ONSHORE LP | Slot | SLOT#11 SICKLER 1N-34HZ (399'FSL & 1449'FEL, SEC.34) |
| Area | COLORADO | Well | SICKLER 1N-34HZ |
| Field | WELD COUNTY (KERR MCGEE) | Wellbore | SICKLER 1N-34HZ AWB |
| Facility | SEC.34-T2N-R67W | | |

WELLPATH COMPOSITION - Ref Wellbore: SICKLER 1N-34HZ AWB Ref Wellpath: SICKLER 1N-34HZ AWP

| Start MD [ft] | End MD [ft] | Positional Uncertainty Model | Log Name/Comment | Wellbore |
|---------------|-------------|--------------------------------------|--|---------------------|
| 16.00 | 1177.00 | Generic gyro - continuous (Standard) | MS GYRO SURVEYS <116-1177> | SICKLER 1N-34HZ AWB |
| 1177.00 | 7815.00 | NaviTrak (MAGCORR,IFR) | BHI NAVITRAK MWD+IFR 8 3/4" <1338-7815> | SICKLER 1N-34HZ AWB |
| 7815.00 | 13027.00 | NaviTrak (MAGCORR,IFR) | BHI NAVITRAK MWD+IFR 6 1/8" <7870-13027> | SICKLER 1N-34HZ AWB |
| 13027.00 | 13078.00 | Blind Drilling (std) | Projection to bit | SICKLER 1N-34HZ AWB |

Actual Wellpath Report

SICKLER 1N-34HZ AWP

Page 6 of 6

REFERENCE WELLPATH IDENTIFICATION

| | | | |
|----------|--|----------|---|
| Operator | KERR-MCGEE OIL & GAS ONSHORE LP | Slot | SLOT#11 SICKLER 1N-34HZ (399'FSL & 1449'FEL, SEC.34) |
| Area | COLORADO | Well | SICKLER 1N-34HZ |
| Field | WELD COUNTY (KERR MCGEE) | Wellbore | SICKLER 1N-34HZ AWB |
| Facility | SEC.34-T2N-R67W | | |

WELLPATH COMMENTS

| MD [ft] | Inclination [°] | Azimuth [°] | TVD [ft] | Comment |
|------------|--------------------|----------------|-------------|---------------------------|
| 16.00 | 0.000 | 227.780 | 16.00 | TIE ON |
| 116.00 | 0.400 | 227.780 | 116.00 | BEGIN GYRO SURVEYS |
| 1177.00 | 0.470 | 278.400 | 1176.99 | TIE ONTO GYRO SURVEYS |
| 1338.00 | 0.310 | 192.510 | 1337.98 | BEGIN BHI MWD+IFR SURVEYS |
| 7854.00 | 90.385 | 2.675 | 7394.61 | 7" CASING POINT |
| 13027.00 | 91.270 | 359.050 | 7363.97 | LAST BHI MWD+IFR SURVEY |
| 13078.00 | 91.270 | 359.050 | 7362.84 | PROJECTION TO BIT |