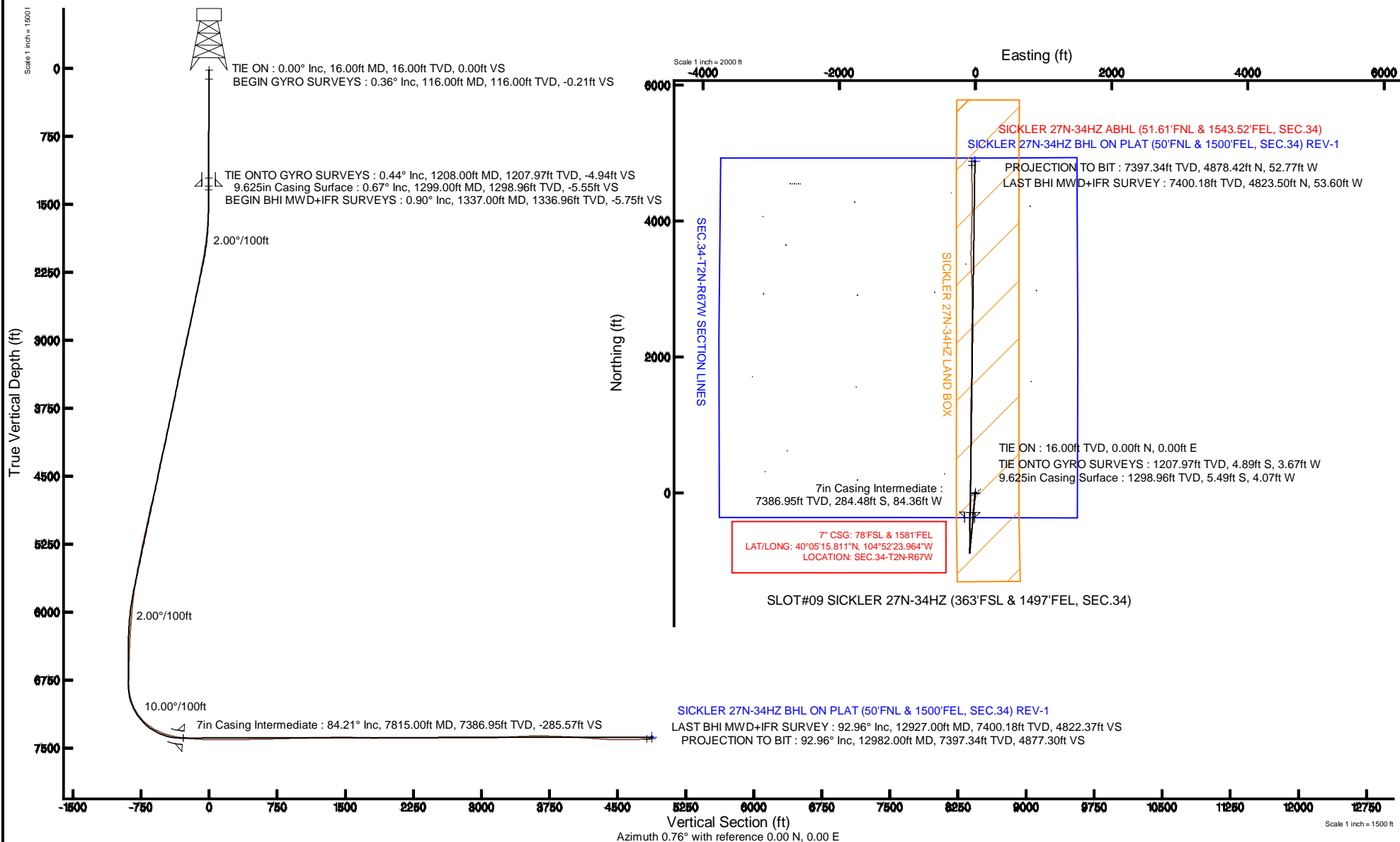


KERR-MCGEE OIL & GAS ONSHORE LP

Location: COLORADO Slot: SLOT#09 SICKLER 27N-34HZ (363°FSL & 1497°FEL, SEC.34)
 Field: WELD COUNTY (KERR MCGEE) Well: SICKLER 27N-34HZ
 Facility: SEC.34-T2N-R67W Wellbore: SICKLER 27N-34HZ PWB

Plot reference wellpath is SICKLER 27N-34HZ (REV-A.1) PWP

True vertical depths are referenced to XTREME 6 (16' RKB) (RKB)	Grid System: NAD83 / Lambert Colorado SP, Northern Zone (501), US feet
Measured depths are referenced to XTREME 6 (16' RKB) (RKB)	North Reference: True north
XTREME 6 (16' RKB) (RKB) to Mean Sea Level: 4965 feet	Scale: True distance
Mean Sea Level to Mud line (At Slot: SLOT#09 SICKLER 27N-34HZ (363°FSL & 1497°FEL, SEC.34)): 0 feet	Depths are in feet
Coordinates are in feet referenced to Slot	Created by: robale01 on 17/Jul/2014



Actual Wellpath Report

SICKLER 27N-34HZ AWP

Page 1 of 6

REFERENCE WELLPATH IDENTIFICATION

Operator	KERR-MCGEE OIL & GAS ONSHORE LP	Slot	SLOT#09 SICKLER 27N-34HZ (363'FSL & 1497'FEL, SEC.34)
Area	COLORADO	Well	SICKLER 27N-34HZ
Field	WELD COUNTY (KERR MCGEE)	Wellbore	SICKLER 27N-34HZ AWP
Facility	SEC.34-T2N-R67W		

REPORT SETUP INFORMATION

Projection System	NAD83 / Lambert Colorado SP, Northern Zone (501), US feet	Software System	WellArchitect® 4.0.0
North Reference	True	User	Robiale01
Scale	0.999961	Report Generated	17/Jul/2014 at 08:32
Convergence at slot	n/a	Database/Source file	WellArchitectDB/SICKLER_27N-34HZ_AWP.xml

WELLPATH LOCATION

	Local coordinates		Grid coordinates		Geographic coordinates	
	North[ft]	East[ft]	Easting[US ft]	Northing[US ft]	Latitude	Longitude
Slot Location	-4550.59	2570.44	3175420.73	1275707.61	40°05'18.622"N	104°52'22.879"W
Facility Reference Pt			3172818.76	1280239.99	40°06'03.593"N	104°52'55.951"W
Field Reference Pt			3197771.84	1268891.29	40°04'09.600"N	104°47'36.000"W

WELLPATH DATUM

Calculation method	Minimum curvature	XTREME 6 (16' RKB) (RKB) to Facility Vertical Datum	4965.00ft
Horizontal Reference Pt	Slot	XTREME 6 (16' RKB) (RKB) to Mean Sea Level	4965.00ft
Vertical Reference Pt	XTREME 6 (16' RKB) (RKB)	XTREME 6 (16' RKB) (RKB) to Mud Line at Slot (SLOT#09 SICKLER 27N-34HZ (363'FSL & 1497'FEL, SEC.34))	4965.00ft
MD Reference Pt	XTREME 6 (16' RKB) (RKB)	Section Origin	N 0.00, E 0.00 ft
Field Vertical Reference	Mean Sea Level	Section Azimuth	359.38°

Actual Wellpath Report

SICKLER 27N-34HZ AWP

Page 2 of 6

REFERENCE WELLPATH IDENTIFICATION				
Operator	KERR-MCGEE OIL & GAS ONSHORE LP	Slot	SLOT#09 SICKLER 27N-34HZ (363'FSL & 1497'FEL, SEC.34)	
Area	COLORADO	Well	SICKLER 27N-34HZ	
Field	WELD COUNTY (KERR MCGEE)	Wellbore	SICKLER 27N-34HZ AWP	
Facility	SEC.34-T2N-R67W			

WELLPATH DATA (116 stations) † = interpolated/extrapolated station										
MD [ft]	Inclination [°]	Azimuth [°]	TVD [ft]	Vert Sect [ft]	North [ft]	East [ft]	Latitude	Longitude	DLS [°/100ft]	Comments
0.00†	0.000	228.410	0.00	0.00	0.00	0.00	40°05'18.622"N	104°52'22.879"W	0.00	
16.00	0.000	228.410	16.00	0.00	0.00	0.00	40°05'18.622"N	104°52'22.879"W	0.00	TIE ON
116.00	0.360	228.410	116.00	-0.21	-0.21	-0.23	40°05'18.620"N	104°52'22.882"W	0.36	BEGIN GYRO SURVEYS
216.00	0.370	247.500	216.00	-0.53	-0.54	-0.77	40°05'18.617"N	104°52'22.889"W	0.12	
316.00	0.290	309.300	316.00	-0.49	-0.50	-1.26	40°05'18.617"N	104°52'22.895"W	0.35	
416.00	0.150	78.680	416.00	-0.30	-0.32	-1.33	40°05'18.619"N	104°52'22.896"W	0.40	
516.00	0.530	159.570	515.99	-0.71	-0.73	-1.04	40°05'18.615"N	104°52'22.892"W	0.53	
616.00	0.860	192.540	615.99	-1.88	-1.89	-1.04	40°05'18.603"N	104°52'22.892"W	0.51	
716.00	0.720	201.760	715.98	-3.19	-3.21	-1.44	40°05'18.590"N	104°52'22.897"W	0.19	
816.00	0.510	240.440	815.97	-3.99	-4.01	-2.06	40°05'18.582"N	104°52'22.905"W	0.45	
916.00	0.470	252.900	915.97	-4.32	-4.35	-2.84	40°05'18.579"N	104°52'22.915"W	0.11	
1016.00	0.200	292.380	1015.97	-4.37	-4.41	-3.39	40°05'18.578"N	104°52'22.923"W	0.34	
1116.00	0.160	221.030	1115.97	-4.40	-4.44	-3.64	40°05'18.578"N	104°52'22.926"W	0.21	
1208.00	0.440	170.150	1207.97	-4.85	-4.89	-3.67	40°05'18.574"N	104°52'22.926"W	0.39	TIE ONTO GYRO SURVEYS
1337.00	0.900	251.770	1336.96	-5.64	-5.69	-4.54	40°05'18.566"N	104°52'22.937"W	0.73	BEGIN BHI MWD+IFR SURVEYS
1429.00	0.870	247.910	1428.95	-6.12	-6.18	-5.88	40°05'18.561"N	104°52'22.955"W	0.07	
1520.00	1.140	257.170	1519.93	-6.56	-6.64	-7.40	40°05'18.556"N	104°52'22.974"W	0.35	
1610.00	2.600	208.800	1609.89	-8.53	-8.63	-9.26	40°05'18.537"N	104°52'22.998"W	2.26	
1701.00	3.970	187.280	1700.74	-13.45	-13.57	-10.65	40°05'18.488"N	104°52'23.016"W	2.00	
1793.00	5.160	185.650	1792.45	-20.72	-20.84	-11.46	40°05'18.416"N	104°52'23.026"W	1.30	
1885.00	7.080	187.530	1883.92	-30.44	-30.58	-12.61	40°05'18.320"N	104°52'23.041"W	2.10	
1976.00	8.510	182.850	1974.07	-42.72	-42.87	-13.68	40°05'18.198"N	104°52'23.055"W	1.72	
2067.00	9.860	183.640	2063.91	-57.21	-57.37	-14.51	40°05'18.055"N	104°52'23.066"W	1.49	
2158.00	10.730	185.870	2153.44	-73.39	-73.57	-15.87	40°05'17.895"N	104°52'23.083"W	1.05	
2249.00	10.740	184.650	2242.85	-90.25	-90.45	-17.43	40°05'17.728"N	104°52'23.103"W	0.25	
2340.00	10.510	180.840	2332.29	-106.99	-107.20	-18.24	40°05'17.563"N	104°52'23.114"W	0.81	
2430.00	12.920	186.170	2420.41	-125.19	-125.41	-19.44	40°05'17.383"N	104°52'23.129"W	2.93	
2521.00	11.800	184.430	2509.30	-144.57	-144.80	-21.25	40°05'17.191"N	104°52'23.152"W	1.30	
2703.00	10.930	188.460	2687.73	-180.14	-180.43	-25.23	40°05'16.839"N	104°52'23.204"W	0.65	
2873.00	13.280	185.860	2853.94	-215.46	-215.80	-29.59	40°05'16.489"N	104°52'23.260"W	1.42	
3041.00	12.590	186.200	3017.68	-252.82	-253.19	-33.54	40°05'16.120"N	104°52'23.311"W	0.41	
3212.00	10.940	187.260	3185.08	-287.40	-287.82	-37.60	40°05'15.778"N	104°52'23.363"W	0.97	
3383.00	13.090	182.030	3352.33	-322.82	-323.27	-40.34	40°05'15.427"N	104°52'23.398"W	1.41	
3553.00	9.450	186.070	3519.03	-355.92	-356.40	-42.50	40°05'15.100"N	104°52'23.426"W	2.19	
3723.00	11.340	173.790	3686.25	-386.42	-386.90	-42.16	40°05'14.799"N	104°52'23.421"W	1.71	
3894.00	13.580	183.860	3853.23	-423.18	-423.65	-41.70	40°05'14.435"N	104°52'23.415"W	1.82	
4064.00	10.270	185.310	4019.54	-458.16	-458.67	-44.44	40°05'14.089"N	104°52'23.451"W	1.95	
4235.00	14.300	185.300	4186.59	-494.34	-494.89	-47.81	40°05'13.731"N	104°52'23.494"W	2.36	
4405.00	13.100	188.190	4351.75	-534.26	-534.86	-52.49	40°05'13.336"N	104°52'23.554"W	0.81	
4576.00	9.600	191.670	4519.38	-567.36	-568.02	-58.14	40°05'13.009"N	104°52'23.627"W	2.08	
4746.00	14.170	188.710	4685.70	-601.76	-602.49	-64.16	40°05'12.668"N	104°52'23.704"W	2.71	
4917.00	13.630	190.820	4851.69	-642.16	-642.97	-71.11	40°05'12.268"N	104°52'23.794"W	0.43	
5087.00	11.820	191.610	5017.51	-678.81	-679.70	-78.38	40°05'11.905"N	104°52'23.887"W	1.07	
5257.00	12.770	181.880	5183.62	-714.60	-715.54	-82.50	40°05'11.551"N	104°52'23.940"W	1.34	
5427.00	10.840	180.430	5350.02	-749.36	-750.30	-83.23	40°05'11.207"N	104°52'23.950"W	1.15	

Actual Wellpath Report

SICKLER 27N-34HZ AWP

Page 3 of 6

REFERENCE WELLPATH IDENTIFICATION

Operator	KERR-MCGEE OIL & GAS ONSHORE LP	Slot	SLOT#09 SICKLER 27N-34HZ (363'FSL & 1497'FEL, SEC.34)
Area	COLORADO	Well	SICKLER 27N-34HZ
Field	WELD COUNTY (KERR MCGEE)	Wellbore	SICKLER 27N-34HZ AWP
Facility	SEC.34-T2N-R67W		

WELLPATH DATA (116 stations) † = interpolated/extrapolated station

MD [ft]	Inclination [°]	Azimuth [°]	TVD [ft]	Vert Sect [ft]	North [ft]	East [ft]	Latitude	Longitude	DLS [°/100ft]	Comments
5597.00	11.030	180.670	5516.93	-781.60	-782.55	-83.54	40°05'10.889"N	104°52'23.954"W	0.11	
5682.00	10.160	180.690	5600.48	-797.23	-798.18	-83.73	40°05'10.734"N	104°52'23.956"W	1.02	
5767.00	8.780	180.110	5684.32	-811.21	-812.16	-83.83	40°05'10.596"N	104°52'23.958"W	1.63	
5853.00	6.950	178.460	5769.51	-822.97	-823.93	-83.70	40°05'10.480"N	104°52'23.956"W	2.14	
5937.00	6.930	178.940	5852.89	-833.12	-834.07	-83.47	40°05'10.380"N	104°52'23.953"W	0.07	
6022.00	5.850	180.110	5937.37	-842.58	-843.53	-83.39	40°05'10.286"N	104°52'23.952"W	1.28	
6107.00	4.590	180.030	6022.01	-850.31	-851.27	-83.40	40°05'10.210"N	104°52'23.952"W	1.48	
6192.00	5.250	185.550	6106.70	-857.58	-858.54	-83.78	40°05'10.138"N	104°52'23.957"W	0.95	
6277.00	3.980	185.980	6191.42	-864.38	-865.34	-84.46	40°05'10.071"N	104°52'23.966"W	1.49	
6362.00	2.750	187.070	6276.27	-869.33	-870.30	-85.02	40°05'10.022"N	104°52'23.973"W	1.45	
6448.00	2.610	175.140	6362.18	-873.33	-874.30	-85.11	40°05'09.982"N	104°52'23.974"W	0.67	
6533.00	1.920	172.850	6447.11	-876.67	-877.64	-84.76	40°05'09.949"N	104°52'23.970"W	0.82	
6618.00	1.760	179.490	6532.07	-879.39	-880.36	-84.58	40°05'09.922"N	104°52'23.967"W	0.31	
6704.00	1.350	179.450	6618.04	-881.73	-882.69	-84.55	40°05'09.899"N	104°52'23.967"W	0.48	
6787.00	1.290	186.890	6701.01	-883.63	-884.60	-84.66	40°05'09.880"N	104°52'23.968"W	0.22	
6872.00	0.480	162.360	6786.00	-884.92	-885.89	-84.66	40°05'09.868"N	104°52'23.968"W	1.03	
6915.00	3.460	10.830	6828.98	-883.82	-884.78	-84.36	40°05'09.878"N	104°52'23.964"W	9.04	
6958.00	8.380	4.890	6871.74	-879.43	-880.38	-83.85	40°05'09.922"N	104°52'23.958"W	11.51	
7001.00	11.710	3.650	6914.07	-871.95	-872.91	-83.31	40°05'09.996"N	104°52'23.951"W	7.76	
7043.00	15.420	1.060	6954.90	-862.12	-863.07	-82.93	40°05'10.093"N	104°52'23.946"W	8.95	
7086.00	19.640	359.540	6995.89	-849.17	-850.12	-82.89	40°05'10.221"N	104°52'23.945"W	9.87	
7128.00	23.770	358.450	7034.90	-833.64	-834.59	-83.17	40°05'10.374"N	104°52'23.949"W	9.88	
7171.00	28.150	0.220	7073.56	-814.83	-815.78	-83.37	40°05'10.560"N	104°52'23.952"W	10.34	
7214.00	32.040	2.490	7110.75	-793.29	-794.23	-82.83	40°05'10.773"N	104°52'23.945"W	9.42	
7256.00	36.460	2.560	7145.46	-769.69	-770.62	-81.79	40°05'11.007"N	104°52'23.931"W	10.52	
7299.00	41.080	0.710	7178.98	-742.79	-743.71	-81.04	40°05'11.272"N	104°52'23.922"W	11.08	
7342.00	46.470	359.440	7210.02	-713.06	-713.98	-81.02	40°05'11.566"N	104°52'23.921"W	12.70	
7384.00	51.550	359.610	7237.56	-681.37	-682.29	-81.28	40°05'11.880"N	104°52'23.925"W	12.10	
7427.00	56.000	358.360	7262.96	-646.69	-647.61	-81.91	40°05'12.222"N	104°52'23.933"W	10.61	
7470.00	59.350	357.940	7285.95	-610.37	-611.30	-83.08	40°05'12.581"N	104°52'23.948"W	7.83	
7512.00	62.520	357.830	7306.35	-573.67	-574.62	-84.44	40°05'12.944"N	104°52'23.965"W	7.55	
7555.00	66.630	358.280	7324.81	-534.86	-535.82	-85.75	40°05'13.327"N	104°52'23.982"W	9.60	
7598.00	70.550	358.480	7340.50	-494.84	-495.81	-86.88	40°05'13.722"N	104°52'23.997"W	9.13	
7640.00	73.320	359.260	7353.53	-454.91	-455.89	-87.67	40°05'14.117"N	104°52'24.007"W	6.83	
7683.00	75.770	359.520	7364.98	-413.47	-414.45	-88.11	40°05'14.526"N	104°52'24.013"W	5.73	
7725.00	79.070	1.400	7374.13	-372.50	-373.47	-87.78	40°05'14.931"N	104°52'24.008"W	8.99	
7768.00	81.720	2.400	7381.31	-330.14	-331.10	-86.37	40°05'15.350"N	104°52'23.990"W	6.58	
7785.00	82.890	2.640	7383.58	-313.32	-314.27	-85.63	40°05'15.516"N	104°52'23.981"W	7.02	
7815.00†	84.215	2.231	7386.95	-283.56	-284.48	-84.36	40°05'15.811"N	104°52'23.964"W	4.62	7" CASING POINT
7821.00	84.480	2.150	7387.54	-277.59	-278.52	-84.13	40°05'15.870"N	104°52'23.961"W	4.62	
7989.00	86.100	2.850	7401.34	-110.41	-111.25	-76.83	40°05'17.523"N	104°52'23.868"W	1.05	
8160.00	89.620	0.510	7407.72	60.29	59.52	-71.83	40°05'19.210"N	104°52'23.803"W	2.47	
8331.00	90.210	0.120	7407.98	231.27	230.51	-70.89	40°05'20.900"N	104°52'23.791"W	0.41	
8501.00	91.780	0.160	7405.02	401.22	400.48	-70.47	40°05'22.580"N	104°52'23.786"W	0.92	
8671.00	90.890	0.630	7401.06	571.15	570.43	-69.30	40°05'24.259"N	104°52'23.771"W	0.59	

Actual Wellpath Report

SICKLER 27N-34HZ AWP

Page 4 of 6

REFERENCE WELLPATH IDENTIFICATION

Operator	KERR-MCGEE OIL & GAS ONSHORE LP	Slot	SLOT#09 SICKLER 27N-34HZ (363'FSL & 1497'FEL, SEC.34)
Area	COLORADO	Well	SICKLER 27N-34HZ
Field	WELD COUNTY (KERR MCGEE)	Wellbore	SICKLER 27N-34HZ AWP
Facility	SEC.34-T2N-R67W		

WELLPATH DATA (116 stations)

MD [ft]	Inclination [°]	Azimuth [°]	TVD [ft]	Vert Sect [ft]	North [ft]	East [ft]	Latitude	Longitude	DLS [°/100ft]	Comments
8842.00	91.630	0.090	7397.30	742.08	741.38	-68.22	40°05'25.948"N	104°52'23.757"W	0.54	
9012.00	91.440	0.660	7392.75	911.99	911.32	-67.11	40°05'27.628"N	104°52'23.743"W	0.35	
9183.00	91.320	359.580	7388.63	1082.92	1082.27	-66.75	40°05'29.317"N	104°52'23.738"W	0.64	
9353.00	91.010	0.150	7385.17	1252.88	1252.23	-67.15	40°05'30.997"N	104°52'23.743"W	0.38	
9523.00	91.020	2.130	7382.16	1422.77	1422.16	-63.77	40°05'32.676"N	104°52'23.700"W	1.16	
9694.00	88.060	1.290	7383.54	1593.60	1593.06	-58.67	40°05'34.365"N	104°52'23.634"W	1.80	
9865.00	88.820	0.242	7388.19	1764.48	1763.98	-56.39	40°05'36.054"N	104°52'23.605"W	0.76	
10035.00	92.000	0.070	7386.97	1934.44	1933.95	-55.92	40°05'37.734"N	104°52'23.599"W	1.87	
10205.00	89.620	359.600	7384.57	2104.41	2103.92	-56.41	40°05'39.413"N	104°52'23.605"W	1.43	
10375.00	89.410	0.680	7386.01	2274.38	2273.91	-56.00	40°05'41.093"N	104°52'23.600"W	0.65	
10545.00	90.980	1.580	7385.43	2444.29	2443.87	-52.64	40°05'42.773"N	104°52'23.556"W	1.06	
10715.00	88.540	1.760	7386.14	2614.14	2613.78	-47.69	40°05'44.452"N	104°52'23.493"W	1.44	
10885.00	90.120	0.170	7388.13	2784.06	2783.73	-44.83	40°05'46.131"N	104°52'23.456"W	1.32	
11055.00	89.870	357.840	7388.15	2954.04	2953.70	-47.78	40°05'47.811"N	104°52'23.494"W	1.38	
11225.00	91.690	357.800	7385.83	3123.96	3123.55	-54.25	40°05'49.489"N	104°52'23.577"W	1.07	
11396.00	92.920	358.050	7378.96	3294.76	3294.30	-60.43	40°05'51.177"N	104°52'23.657"W	0.73	
11566.00	92.610	359.190	7370.75	3464.54	3464.05	-64.52	40°05'52.854"N	104°52'23.709"W	0.69	
11735.00	89.960	1.810	7366.96	3633.44	3632.97	-63.05	40°05'54.524"N	104°52'23.690"W	2.20	
11906.00	87.840	1.340	7370.25	3804.27	3803.86	-58.35	40°05'56.212"N	104°52'23.630"W	1.27	
12076.00	87.350	1.380	7377.38	3974.02	3973.66	-54.31	40°05'57.890"N	104°52'23.578"W	0.29	
12247.00	85.700	1.940	7387.74	4144.56	4144.27	-49.37	40°05'59.576"N	104°52'23.514"W	1.02	
12417.00	86.260	359.810	7399.66	4314.08	4313.82	-46.78	40°06'01.252"N	104°52'23.481"W	1.29	
12588.00	89.470	358.470	7406.03	4484.93	4484.66	-49.35	40°06'02.940"N	104°52'23.514"W	2.03	
12757.00	90.760	358.890	7405.69	4653.91	4653.61	-53.24	40°06'04.610"N	104°52'23.564"W	0.80	
12927.00	92.960	0.870	7400.18	4823.80	4823.50	-53.60	40°06'06.289"N	104°52'23.569"W	1.74	LAST BHI MWD+IFR SURVEY
12982.00	92.960	0.870	7397.34	4878.71	4878.42	-52.77	40°06'06.831"N	104°52'23.558"W	0.00	PROJECTION TO BIT

HOLE & CASING SECTIONS - Ref Wellbore: SICKLER 27N-34HZ AWP Ref Wellpath: SICKLER 27N-34HZ AWP

String/Diameter	Start MD [ft]	End MD [ft]	Interval [ft]	Start TVD [ft]	End TVD [ft]	Start N/S [ft]	Start E/W [ft]	End N/S [ft]	End E/W [ft]
13.5in Open Hole	16.00	1309.00	1293.00	16.00	1308.96	0.00	0.00	-5.55	-4.18
9.625in Casing Surface	16.00	1299.00	1283.00	16.00	1298.96	0.00	0.00	-5.49	-4.07
8.75in Open Hole	1309.00	7827.00	6518.00	1308.96	7388.12	-5.55	-4.18	-272.55	-83.91
7in Casing Intermediate	16.00	7815.00	7799.00	16.00	7386.95	0.00	0.00	-284.48	-84.36
6.125in Open Hole	7827.00	12981.00	5154.00	7388.12	7397.39	-272.55	-83.91	4877.42	-52.78

Actual Wellpath Report

SICKLER 27N-34HZ AWP

Page 5 of 6

REFERENCE WELLPATH IDENTIFICATION

Operator	KERR-MCGEE OIL & GAS ONSHORE LP	Slot	SLOT#09 SICKLER 27N-34HZ (363'FSL & 1497'FEL, SEC.34)
Area	COLORADO	Well	SICKLER 27N-34HZ
Field	WELD COUNTY (KERR MCGEE)	Wellbore	SICKLER 27N-34HZ AWB
Facility	SEC.34-T2N-R67W		

WELLPATH COMPOSITION - Ref Wellbore: SICKLER 27N-34HZ AWB Ref Wellpath: SICKLER 27N-34HZ AWP

Start MD [ft]	End MD [ft]	Positional Uncertainty Model	Log Name/Comment	Wellbore
16.00	1208.00	Generic gyro - continuous (Standard)	MS GYRO SURVEYS <116-1208>	SICKLER 27N-34HZ AWB
1208.00	7821.00	NaviTrak (MAGCORR,IFR)	BHI NAVITRAK MWD+IFR 8 3/4" <1337-7821>	SICKLER 27N-34HZ AWB
7821.00	12927.00	NaviTrak (MAGCORR,IFR)	BHI NAVITRAK MWD+IFR 6 1/8" <7989-12927>	SICKLER 27N-34HZ AWB
12927.00	12982.00	Blind Drilling (std)	Projection to bit	SICKLER 27N-34HZ AWB

Actual Wellpath Report

SICKLER 27N-34HZ AWP

Page 6 of 6

REFERENCE WELLPATH IDENTIFICATION

Operator	KERR-MCGEE OIL & GAS ONSHORE LP	Slot	SLOT#09 SICKLER 27N-34HZ (363'FSL & 1497'FEL, SEC.34)
Area	COLORADO	Well	SICKLER 27N-34HZ
Field	WELD COUNTY (KERR MCGEE)	Wellbore	SICKLER 27N-34HZ AWB
Facility	SEC.34-T2N-R67W		

WELLPATH COMMENTS

MD [ft]	Inclination [°]	Azimuth [°]	TVD [ft]	Comment
16.00	0.000	228.410	16.00	TIE ON
116.00	0.360	228.410	116.00	BEGIN GYRO SURVEYS
1208.00	0.440	170.150	1207.97	TIE ONTO GYRO SURVEYS
1337.00	0.900	251.770	1336.96	BEGIN BHI MWD+IFR SURVEYS
7815.00	84.215	2.231	7386.95	7" CASING POINT
12927.00	92.960	0.870	7400.18	LAST BHI MWD+IFR SURVEY
12982.00	92.960	0.870	7397.34	PROJECTION TO BIT