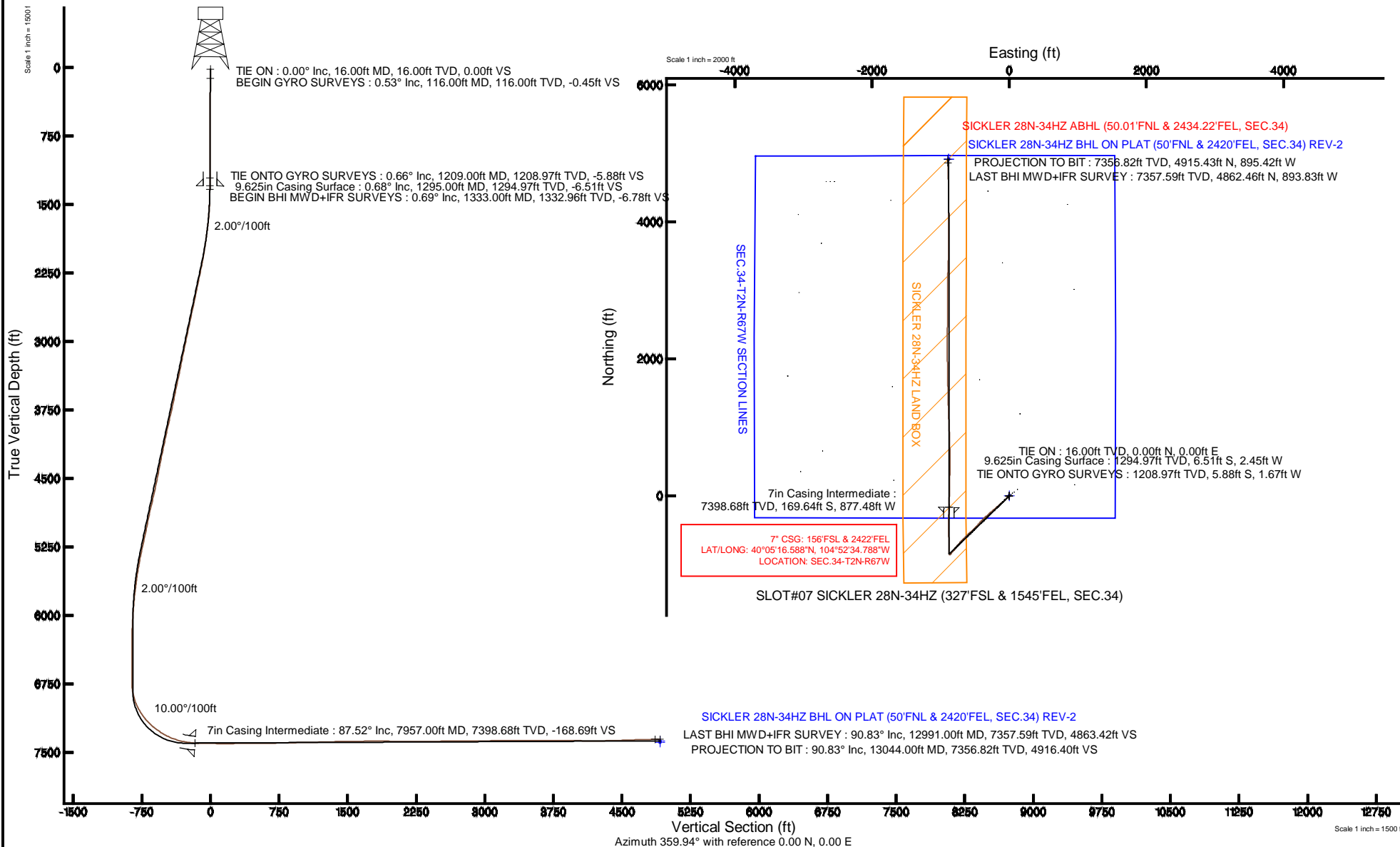


KERR-MCGEE OIL & GAS ONSHORE LP

Location: COLORADO Slot: SLOT#07 SICKLER 28N-34HZ (327'FSL & 1545'FEL, SEC.34)
 Field: WELD COUNTY (KERR MCGEE) Well: SICKLER 28N-34HZ
 Facility: SEC.34-T2N-R67W Wellbore: SICKLER 28N-34HZ PWB

Plot reference wellpath is SICKLER 28N-34HZ (REV-A.1) PWP

True vertical depths are referenced to XTREME 6 (16' RKB) (RKB)	Grid System: NAD83 / Lambert Colorado SP, Northern Zone (501), US feet
Measured depths are referenced to XTREME 6 (16' RKB) (RKB)	North Reference: True north
XTREME 6 (16' RKB) (RKB) to Mean Sea Level: 4965 feet	Scale: True distance
Mean Sea Level to Mud line (At Slot: SLOT#07 SICKLER 28N-34HZ (327'FSL & 1545'FEL, SEC.34)): 0 feet	Depths are in feet
Coordinates are in feet referenced to Slot	Created by: robiale01 on 16/Jul/2014



Actual Wellpath Report

SICKLER 28N-34HZ AWP

Page 1 of 6

REFERENCE WELLPATH IDENTIFICATION

Operator	KERR-MCGEE OIL & GAS ONSHORE LP	Slot	SLOT#07 SICKLER 28N-34HZ (327'FSL & 1545'FEL, SEC.34)
Area	COLORADO	Well	SICKLER 28N-34HZ
Field	WELD COUNTY (KERR MCGEE)	Wellbore	SICKLER 28N-34HZ AWP
Facility	SEC.34-T2N-R67W		

REPORT SETUP INFORMATION

Projection System	NAD83 / Lambert Colorado SP, Northern Zone (501), US feet	Software System	WellArchitect® 4.0.0
North Reference	True	User	Robiale01
Scale	0.999961	Report Generated	16/Jul/2014 at 14:29
Convergence at slot	n/a	Database/Source file	WellArchitectDB/SICKLER_28N-34HZ_AWP.xml

WELLPATH LOCATION

	Local coordinates		Grid coordinates		Geographic coordinates	
	North[ft]	East[ft]	Easting[US ft]	Northing[US ft]	Latitude	Longitude
Slot Location	-4586.72	2522.34	3175372.88	1275671.14	40°05'18.265"N	104°52'23.498"W
Facility Reference Pt			3172818.76	1280239.99	40°06'03.593"N	104°52'55.951"W
Field Reference Pt			3197771.84	1268891.29	40°04'09.600"N	104°47'36.000"W

WELLPATH DATUM

Calculation method	Minimum curvature	XTREME 6 (16' RKB) (RKB) to Facility Vertical Datum	4965.00ft
Horizontal Reference Pt	Slot	XTREME 6 (16' RKB) (RKB) to Mean Sea Level	4965.00ft
Vertical Reference Pt	XTREME 6 (16' RKB) (RKB)	XTREME 6 (16' RKB) (RKB) to Mud Line at Slot (SLOT#07 SICKLER 28N-34HZ (327'FSL & 1545'FEL, SEC.34))	4965.00ft
MD Reference Pt	XTREME 6 (16' RKB) (RKB)	Section Origin	N 0.00, E 0.00 ft
Field Vertical Reference	Mean Sea Level	Section Azimuth	349.68°

Actual Wellpath Report

SICKLER 28N-34HZ AWP

Page 2 of 6

REFERENCE WELLPATH IDENTIFICATION			
Operator	KERR-MCGEE OIL & GAS ONSHORE LP	Slot	SLOT#07 SICKLER 28N-34HZ (327'FSL & 1545'FEL, SEC.34)
Area	COLORADO	Well	SICKLER 28N-34HZ
Field	WELD COUNTY (KERR MCGEE)	Wellbore	SICKLER 28N-34HZ AWP
Facility	SEC.34-T2N-R67W		

WELLPATH DATA (124 stations) † = interpolated/extrapolated station										
MD [ft]	Inclination [°]	Azimuth [°]	TVD [ft]	Vert Sect [ft]	North [ft]	East [ft]	Latitude	Longitude	DLS [°/100ft]	Comments
0.00†	0.000	165.750	0.00	0.00	0.00	0.00	40°05'18.265"N	104°52'23.498"W	0.00	
16.00	0.000	165.750	16.00	0.00	0.00	0.00	40°05'18.265"N	104°52'23.498"W	0.00	TIE ON
116.00	0.530	165.750	116.00	-0.46	-0.45	0.11	40°05'18.261"N	104°52'23.497"W	0.53	BEGIN GYRO SURVEYS
216.00	0.610	197.710	215.99	-1.39	-1.40	0.07	40°05'18.251"N	104°52'23.497"W	0.32	
316.00	0.500	208.960	315.99	-2.20	-2.29	-0.31	40°05'18.242"N	104°52'23.502"W	0.15	
416.00	0.450	213.180	415.99	-2.82	-3.00	-0.73	40°05'18.235"N	104°52'23.507"W	0.06	
516.00	0.250	265.190	515.98	-3.09	-3.35	-1.17	40°05'18.232"N	104°52'23.513"W	0.36	
616.00	0.110	7.710	615.98	-2.97	-3.27	-1.37	40°05'18.233"N	104°52'23.516"W	0.29	
716.00	0.120	103.820	715.98	-2.93	-3.20	-1.26	40°05'18.233"N	104°52'23.514"W	0.17	
816.00	0.260	142.650	815.98	-3.17	-3.41	-1.02	40°05'18.231"N	104°52'23.511"W	0.18	
916.00	0.260	153.240	915.98	-3.59	-3.79	-0.78	40°05'18.228"N	104°52'23.508"W	0.05	
1016.00	0.510	190.700	1015.98	-4.22	-4.43	-0.76	40°05'18.221"N	104°52'23.508"W	0.34	
1116.00	0.470	211.140	1115.98	-4.95	-5.22	-1.05	40°05'18.213"N	104°52'23.512"W	0.18	
1209.00	0.660	231.060	1208.97	-5.49	-5.88	-1.67	40°05'18.207"N	104°52'23.519"W	0.29	TIE ONTO GYRO SURVEYS
1333.00	0.690	232.550	1332.96	-6.17	-6.79	-2.81	40°05'18.198"N	104°52'23.534"W	0.03	BEGIN BHI MWD+IFR SURVEYS
1424.00	2.970	235.900	1423.91	-7.37	-8.44	-5.20	40°05'18.182"N	104°52'23.565"W	2.51	
1514.00	4.610	234.750	1513.71	-9.84	-11.84	-10.09	40°05'18.148"N	104°52'23.628"W	1.82	
1606.00	6.920	230.240	1605.24	-14.12	-17.51	-17.37	40°05'18.092"N	104°52'23.721"W	2.56	
1696.00	8.450	221.680	1694.43	-20.85	-25.92	-25.93	40°05'18.009"N	104°52'23.832"W	2.12	
1787.00	9.720	220.100	1784.29	-29.87	-36.79	-35.33	40°05'17.901"N	104°52'23.953"W	1.42	
1878.00	9.890	222.690	1873.96	-39.46	-48.41	-45.57	40°05'17.787"N	104°52'24.084"W	0.52	
1968.00	12.150	225.560	1962.30	-49.42	-60.73	-57.58	40°05'17.665"N	104°52'24.239"W	2.58	
2059.00	15.370	230.230	2050.67	-60.73	-75.15	-73.69	40°05'17.522"N	104°52'24.446"W	3.74	
2150.00	16.410	231.470	2138.20	-72.73	-90.87	-93.02	40°05'17.367"N	104°52'24.695"W	1.20	
2241.00	18.280	228.300	2225.06	-86.24	-108.38	-113.73	40°05'17.194"N	104°52'24.961"W	2.30	
2333.00	17.750	229.020	2312.55	-100.90	-127.17	-135.09	40°05'17.008"N	104°52'25.236"W	0.62	
2424.00	17.420	229.600	2399.29	-114.80	-145.10	-155.93	40°05'16.831"N	104°52'25.504"W	0.41	
2516.00	16.860	229.610	2487.21	-128.39	-162.67	-176.58	40°05'16.657"N	104°52'25.770"W	0.61	
2607.00	18.600	229.260	2573.88	-142.35	-180.69	-197.63	40°05'16.479"N	104°52'26.041"W	1.92	
2697.00	18.310	229.080	2659.25	-156.81	-199.32	-219.19	40°05'16.295"N	104°52'26.318"W	0.33	
2782.00	17.880	228.790	2740.05	-170.30	-216.66	-239.10	40°05'16.124"N	104°52'26.574"W	0.52	
2951.00	16.700	226.910	2901.41	-196.76	-250.34	-276.35	40°05'15.791"N	104°52'27.054"W	0.77	
3122.00	18.080	229.120	3064.59	-223.55	-284.49	-314.35	40°05'15.454"N	104°52'27.543"W	0.89	
3292.00	15.820	227.070	3227.20	-249.45	-317.55	-351.27	40°05'15.127"N	104°52'28.017"W	1.37	
3462.00	16.560	222.980	3390.46	-276.42	-351.06	-384.76	40°05'14.796"N	104°52'28.448"W	0.80	
3632.00	15.720	224.810	3553.76	-304.06	-385.12	-417.50	40°05'14.459"N	104°52'28.870"W	0.58	
3803.00	15.650	222.150	3718.39	-331.35	-418.65	-449.31	40°05'14.128"N	104°52'29.279"W	0.42	
3973.00	18.870	224.920	3880.72	-361.00	-455.13	-484.12	40°05'13.767"N	104°52'29.727"W	1.95	
4143.00	15.710	225.460	4043.02	-389.62	-490.75	-519.94	40°05'13.415"N	104°52'30.188"W	1.86	
4313.00	17.630	227.060	4205.87	-416.44	-524.43	-555.20	40°05'13.082"N	104°52'30.641"W	1.16	
4484.00	15.840	226.620	4369.62	-443.13	-558.10	-591.12	40°05'12.750"N	104°52'31.103"W	1.05	
4654.00	16.010	226.980	4533.09	-468.45	-590.03	-625.12	40°05'12.434"N	104°52'31.541"W	0.12	
4823.00	18.040	223.850	4694.68	-496.36	-624.81	-660.29	40°05'12.090"N	104°52'31.993"W	1.32	
4993.00	17.100	223.050	4856.75	-526.68	-662.06	-695.59	40°05'11.722"N	104°52'32.447"W	0.57	
5164.00	14.590	221.660	5021.24	-554.95	-696.53	-727.07	40°05'11.382"N	104°52'32.852"W	1.48	

REFERENCE WELLPATH IDENTIFICATION				
Operator	KERR-MCGEE OIL & GAS ONSHORE LP		Slot	SLOT#07 SICKLER 28N-34HZ (327'FSL & 1545'FEL, SEC.34)
Area	COLORADO		Well	SICKLER 28N-34HZ
Field	WELD COUNTY (KERR MCGEE)		Wellbore	SICKLER 28N-34HZ AWP
Facility	SEC.34-T2N-R67W			

WELLPATH DATA (124 stations) † = interpolated/extrapolated station										
MD [ft]	Inclination [°]	Azimuth [°]	TVD [ft]	Vert Sect [ft]	North [ft]	East [ft]	Latitude	Longitude	DLS [°/100ft]	Comments
5332.00	16.360	219.170	5183.15	-583.35	-730.68	-756.09	40°05'11.044"N	104°52'33.226"W	1.13	
5417.00	15.140	218.730	5264.95	-598.40	-748.62	-770.59	40°05'10.867"N	104°52'33.412"W	1.44	
5503.00	14.230	218.360	5348.14	-612.74	-765.67	-784.18	40°05'10.698"N	104°52'33.587"W	1.06	
5587.00	12.930	216.890	5429.79	-625.94	-781.28	-796.23	40°05'10.544"N	104°52'33.742"W	1.60	
5673.00	11.510	216.430	5513.84	-638.35	-795.88	-807.10	40°05'10.400"N	104°52'33.882"W	1.66	
5758.00	11.440	225.870	5597.15	-648.85	-808.58	-818.19	40°05'10.274"N	104°52'34.025"W	2.21	
5843.00	9.930	223.490	5680.67	-657.87	-819.76	-829.28	40°05'10.164"N	104°52'34.167"W	1.85	
5929.00	8.030	222.900	5765.62	-665.85	-829.54	-838.47	40°05'10.067"N	104°52'34.286"W	2.21	
6014.00	6.870	222.550	5849.90	-672.47	-837.64	-845.95	40°05'09.987"N	104°52'34.382"W	1.37	
6098.00	5.940	221.020	5933.37	-678.22	-844.62	-852.20	40°05'09.918"N	104°52'34.462"W	1.13	
6183.00	4.530	222.910	6018.02	-682.97	-850.40	-857.38	40°05'09.861"N	104°52'34.529"W	1.67	
6268.00	3.520	222.820	6102.80	-686.55	-854.77	-861.44	40°05'09.818"N	104°52'34.581"W	1.19	
6353.00	2.670	225.970	6187.68	-689.21	-858.06	-864.63	40°05'09.785"N	104°52'34.622"W	1.02	
6438.00	2.180	257.700	6272.61	-690.37	-859.78	-867.64	40°05'09.768"N	104°52'34.661"W	1.66	
6523.00	1.670	272.190	6357.56	-690.15	-860.08	-870.45	40°05'09.765"N	104°52'34.697"W	0.82	
6608.00	0.920	231.070	6442.54	-690.21	-860.46	-872.22	40°05'09.762"N	104°52'34.720"W	1.35	
6779.00	0.180	345.870	6613.53	-690.60	-861.06	-873.35	40°05'09.756"N	104°52'34.734"W	0.59	
6864.00	0.370	27.750	6698.53	-690.25	-860.69	-873.26	40°05'09.759"N	104°52'34.733"W	0.31	
6951.00	2.810	16.030	6785.49	-688.12	-858.39	-872.54	40°05'09.782"N	104°52'34.724"W	2.81	
6993.00	9.120	0.460	6827.24	-683.92	-854.07	-872.23	40°05'09.825"N	104°52'34.720"W	15.37	
7036.00	13.450	352.140	6869.41	-675.57	-845.70	-872.89	40°05'09.907"N	104°52'34.728"W	10.73	
7077.00	16.580	349.460	6909.00	-664.96	-835.22	-874.61	40°05'10.011"N	104°52'34.751"W	7.82	
7120.00	20.230	352.130	6949.80	-651.39	-821.82	-876.75	40°05'10.143"N	104°52'34.778"W	8.71	
7163.00	24.340	355.870	6989.58	-635.14	-805.61	-878.41	40°05'10.304"N	104°52'34.799"W	10.11	
7205.00	28.900	359.870	7027.12	-616.54	-786.82	-879.05	40°05'10.489"N	104°52'34.808"W	11.66	
7248.00	32.720	1.310	7064.04	-594.92	-764.80	-878.81	40°05'10.707"N	104°52'34.805"W	9.05	
7290.00	37.090	1.280	7098.48	-571.39	-740.78	-878.27	40°05'10.944"N	104°52'34.798"W	10.40	
7332.00	39.950	359.840	7131.34	-545.70	-714.63	-878.02	40°05'11.203"N	104°52'34.795"W	7.14	
7375.00	43.470	359.890	7163.43	-517.55	-686.02	-878.09	40°05'11.485"N	104°52'34.795"W	8.19	
7418.00	46.550	358.380	7193.83	-487.55	-655.62	-878.56	40°05'11.786"N	104°52'34.801"W	7.58	
7460.00	49.780	358.010	7221.84	-456.61	-624.35	-879.55	40°05'12.095"N	104°52'34.814"W	7.72	
7503.00	53.020	358.340	7248.66	-423.38	-590.76	-880.62	40°05'12.427"N	104°52'34.828"W	7.56	
7545.00	56.310	0.130	7272.95	-389.60	-556.51	-881.06	40°05'12.765"N	104°52'34.834"W	8.57	
7588.00	58.740	358.910	7296.04	-353.86	-520.24	-881.37	40°05'13.124"N	104°52'34.838"W	6.14	
7630.00	62.110	359.570	7316.77	-317.85	-483.72	-881.85	40°05'13.485"N	104°52'34.844"W	8.14	
7673.00	65.910	358.850	7335.61	-279.74	-445.08	-882.39	40°05'13.866"N	104°52'34.851"W	8.96	
7716.00	70.380	1.080	7351.61	-240.48	-405.18	-882.40	40°05'14.261"N	104°52'34.851"W	11.45	
7758.00	73.660	0.640	7364.57	-201.30	-365.25	-881.80	40°05'14.655"N	104°52'34.843"W	7.87	
7801.00	76.970	0.980	7375.47	-160.49	-323.66	-881.21	40°05'15.066"N	104°52'34.836"W	7.74	
7844.00	79.330	1.120	7384.30	-119.24	-281.59	-880.44	40°05'15.482"N	104°52'34.826"W	5.50	
7886.00	81.210	1.570	7391.40	-78.70	-240.20	-879.47	40°05'15.891"N	104°52'34.813"W	4.60	
7919.00	83.630	1.610	7395.75	-46.70	-207.51	-878.56	40°05'16.214"N	104°52'34.802"W	7.33	
7957.00†	87.525	1.665	7398.68	-9.64	-169.64	-877.48	40°05'16.588"N	104°52'34.788"W	10.25	7" CASING POINT
7967.00	88.550	1.680	7399.03	0.14	-159.65	-877.19	40°05'16.687"N	104°52'34.784"W	10.25	
8074.00	88.360	1.240	7401.91	104.84	-52.73	-874.46	40°05'17.744"N	104°52'34.749"W	0.45	

REFERENCE WELLPATH IDENTIFICATION

Operator	KERR-MCGEE OIL & GAS ONSHORE LP	Slot	SLOT#07 SICKLER 28N-34HZ (327'FSL & 1545'FEL, SEC.34)
Area	COLORADO	Well	SICKLER 28N-34HZ
Field	WELD COUNTY (KERR MCGEE)	Wellbore	SICKLER 28N-34HZ AWB
Facility	SEC.34-T2N-R67W		

WELLPATH DATA (124 stations)

MD [ft]	Inclination [°]	Azimuth [°]	TVD [ft]	Vert Sect [ft]	North [ft]	East [ft]	Latitude	Longitude	DLS [°/100ft]	Comments
8159.00	89.660	1.140	7403.38	188.12	32.24	-872.70	40°05'18.583"N	104°52'34.726"W	1.53	
8245.00	89.810	1.270	7403.78	272.38	118.22	-870.89	40°05'19.433"N	104°52'34.703"W	0.23	
8330.00	89.960	1.080	7403.95	355.68	203.20	-869.15	40°05'20.273"N	104°52'34.681"W	0.28	
8415.00	91.010	1.240	7403.23	438.97	288.18	-867.43	40°05'21.113"N	104°52'34.659"W	1.25	
8500.00	90.240	1.880	7402.30	522.14	373.14	-865.11	40°05'21.952"N	104°52'34.629"W	1.18	
8585.00	90.180	1.340	7401.99	605.30	458.11	-862.72	40°05'22.792"N	104°52'34.598"W	0.64	
8670.00	90.890	359.480	7401.20	688.81	543.10	-862.12	40°05'23.632"N	104°52'34.590"W	2.34	
8756.00	90.610	357.720	7400.07	773.76	629.06	-864.22	40°05'24.481"N	104°52'34.618"W	2.07	
8926.00	91.570	358.510	7396.84	941.88	798.93	-869.81	40°05'26.160"N	104°52'34.690"W	0.73	
9096.00	91.070	357.970	7392.92	1109.94	968.81	-875.03	40°05'27.839"N	104°52'34.757"W	0.43	
9266.00	91.230	358.080	7389.51	1278.11	1138.67	-880.88	40°05'29.517"N	104°52'34.832"W	0.11	
9437.00	91.710	357.880	7385.12	1447.26	1309.51	-886.91	40°05'31.206"N	104°52'34.910"W	0.30	
9607.00	90.940	358.940	7381.19	1615.24	1479.40	-891.63	40°05'32.884"N	104°52'34.971"W	0.77	
9778.00	90.700	359.090	7378.74	1783.95	1650.35	-894.57	40°05'34.574"N	104°52'35.008"W	0.17	
9947.00	90.060	358.640	7377.62	1950.78	1819.31	-897.91	40°05'36.244"N	104°52'35.052"W	0.46	
10117.00	88.950	359.610	7379.09	2118.46	1989.28	-900.51	40°05'37.923"N	104°52'35.085"W	0.87	
10288.00	89.110	359.270	7381.99	2286.96	2160.25	-902.18	40°05'39.613"N	104°52'35.107"W	0.22	
10456.00	90.490	0.430	7382.57	2452.31	2328.24	-902.62	40°05'41.273"N	104°52'35.112"W	1.07	
10626.00	91.750	1.920	7379.25	2618.86	2498.17	-899.13	40°05'42.952"N	104°52'35.068"W	1.15	
10797.00	90.520	359.460	7375.86	2786.66	2669.10	-897.08	40°05'44.641"N	104°52'35.041"W	1.61	
10967.00	89.440	0.420	7375.92	2953.93	2839.10	-897.25	40°05'46.321"N	104°52'35.044"W	0.85	
11137.00	91.440	0.200	7374.62	3121.00	3009.08	-896.34	40°05'48.001"N	104°52'35.032"W	1.18	
11308.00	90.610	0.730	7371.56	3288.95	3180.05	-894.95	40°05'49.691"N	104°52'35.014"W	0.58	
11478.00	89.810	2.450	7370.93	3455.28	3349.97	-890.23	40°05'51.370"N	104°52'34.953"W	1.12	
11648.00	89.960	0.740	7371.27	3621.61	3519.90	-885.50	40°05'53.049"N	104°52'34.893"W	1.01	
11819.00	90.370	359.830	7370.78	3789.68	3690.89	-884.65	40°05'54.739"N	104°52'34.882"W	0.58	
11989.00	89.870	0.020	7370.43	3956.97	3860.89	-884.87	40°05'56.419"N	104°52'34.885"W	0.31	
12159.00	88.560	0.720	7372.75	4124.00	4030.87	-883.77	40°05'58.099"N	104°52'34.871"W	0.87	
12328.00	90.150	0.170	7374.66	4290.00	4199.85	-882.46	40°05'59.768"N	104°52'34.854"W	1.00	
12499.00	91.230	359.410	7372.60	4458.33	4370.83	-883.09	40°06'01.458"N	104°52'34.862"W	0.77	
12669.00	92.520	358.900	7367.04	4625.91	4540.72	-885.59	40°06'03.137"N	104°52'34.894"W	0.82	
12839.00	91.640	358.460	7360.87	4793.71	4710.56	-889.51	40°06'04.815"N	104°52'34.945"W	0.58	
12991.00	90.830	358.280	7357.59	4943.92	4862.46	-893.83	40°06'06.316"N	104°52'35.000"W	0.55	LAST BHI MWD+IFR SURVEY
13044.00	90.830	358.280	7356.82	4996.32	4915.43	-895.42	40°06'06.840"N	104°52'35.021"W	0.00	PROJECTION TO BIT

Actual Wellpath Report

SICKLER 28N-34HZ AWP

Page 5 of 6

REFERENCE WELLPATH IDENTIFICATION

Operator	KERR-MCGEE OIL & GAS ONSHORE LP	Slot	SLOT#07 SICKLER 28N-34HZ (327'FSL & 1545'FEL, SEC.34)
Area	COLORADO	Well	SICKLER 28N-34HZ
Field	WELD COUNTY (KERR MCGEE)	Wellbore	SICKLER 28N-34HZ AWB
Facility	SEC.34-T2N-R67W		

HOLE & CASING SECTIONS - Ref Wellbore: SICKLER 28N-34HZ AWB Ref Wellpath: SICKLER 28N-34HZ AWP

String/Diameter	Start MD [ft]	End MD [ft]	Interval [ft]	Start TVD [ft]	End TVD [ft]	Start N/S [ft]	Start E/W [ft]	End N/S [ft]	End E/W [ft]
13.5in Open Hole	16.00	1305.00	1289.00	16.00	1304.97	0.00	0.00	-6.58	-2.55
9.625in Casing Surface	16.00	1295.00	1279.00	16.00	1294.97	0.00	0.00	-6.51	-2.45
8.75in Open Hole	1305.00	7967.00	6662.00	1304.97	7399.03	-6.58	-2.55	-159.65	-877.19
7in Casing Intermediate	16.00	7957.00	7941.00	16.00	7398.68	0.00	0.00	-169.64	-877.48
6.125in Open Hole	7967.00	13044.00	5077.00	7399.03	7356.82	-159.65	-877.19	4915.43	-895.42

WELLPATH COMPOSITION - Ref Wellbore: SICKLER 28N-34HZ AWB Ref Wellpath: SICKLER 28N-34HZ AWP

Start MD [ft]	End MD [ft]	Positional Uncertainty Model	Log Name/Comment	Wellbore
16.00	1209.00	Generic gyro - continuous (Standard)	MS GYRO SURVEYS FROM ANADARKO <116-1209>	SICKLER 28N-34HZ AWB
1209.00	7967.00	NaviTrak (MAGCORR,IFR)	BHI NAVITRAK MWD+IFR 8 3/4" <1333-7967>	SICKLER 28N-34HZ AWB
7967.00	12991.00	NaviTrak (MAGCORR,IFR)	NAVITRAK MWD+IFR 6 1/8" <8074-12991>	SICKLER 28N-34HZ AWB
12991.00	13044.00	Blind Drilling (std)	Projection to bit	SICKLER 28N-34HZ AWB

Actual Wellpath Report

SICKLER 28N-34HZ AWP

Page 6 of 6

REFERENCE WELLPATH IDENTIFICATION

Operator	KERR-MCGEE OIL & GAS ONSHORE LP	Slot	SLOT#07 SICKLER 28N-34HZ (327'FSL & 1545'FEL, SEC.34)
Area	COLORADO	Well	SICKLER 28N-34HZ
Field	WELD COUNTY (KERR MCGEE)	Wellbore	SICKLER 28N-34HZ AWP
Facility	SEC.34-T2N-R67W		

WELLPATH COMMENTS

MD [ft]	Inclination [°]	Azimuth [°]	TVD [ft]	Comment
16.00	0.000	165.750	16.00	TIE ON
116.00	0.530	165.750	116.00	BEGIN GYRO SURVEYS
1209.00	0.660	231.060	1208.97	TIE ONTO GYRO SURVEYS
1333.00	0.690	232.550	1332.96	BEGIN BHI MWD+IFR SURVEYS
7957.00	87.525	1.665	7398.68	7" CASING POINT
12991.00	90.830	358.280	7357.59	LAST BHI MWD+IFR SURVEY
13044.00	90.830	358.280	7356.82	PROJECTION TO BIT