



Lat40°, Inc. 1635 Foxtrail Drive, Suite 325 Loveland, CO 970-776-3321

WELL LOCATION CERTIFICATE

SECTION: 1
TOWNSHIP: 9N
RANGE: 58W

THIS MAP DOES NOT REPRESENT A BOUNDARY SURVEY

FOUND #6 REBAR
WITH 2.5" ALUM.
CAP LS 17492

SW1/4 S.36, T.10N., R.58W. SE1/4

FOUND #6 REBAR
WITH 2.5" ALUM.
CAP LS 17492

FOUND #6 REBAR WITH
2.5" ALUM. CAP LS 38175

GOV'T LOT 4

GOV'T LOT 3

GOV'T LOT 2

GOV'T LOT 1

NW1/4

NE1/4

S.1, T.9N., R.58W.

EX. MOTIS 2

FOUND #6 REBAR
WITH 2.5" ALUM.
CAP LS 17492

FOUND 1" PIPE
WITH 2.5" BRASS
CAP GLO 1918

MORTON STATE LD01-79-1BHN

In accordance with a request from Brian James with Noble Energy Inc., Lat40°, Inc. has determined the surface location of the MORTON STATE LD01-79-1BHN to be 400' from the SOUTH line and 352' from the WEST line as measured at right angles from the section lines of Section 1, Township 9 North, Range 58 West and the bottom hole to be 810' from the NORTH line and 440' from the WEST line as measured at right angles from the section lines of Section 36, Township 10 North, Range 58 West of the Sixth Principal Meridian, County of Weld, State of Colorado.

I hereby state that this Well Location Certificate was prepared by me, or under my direct supervision, that the fieldwork was completed on 9/3/2013, for and on behalf of Noble Energy Inc. That this is not a Land Survey Plat or an Improvement Survey Plat, and that it is not to be relied upon for establishment of fence, building, or other future improvement lines.

NOTE:

- Bearings shown are Grid Bearings of the Colorado State Plane Coordinate System, North Zone, North American Datum 1983/2007. The lineal dimensions as contained herein are based upon the "U.S. Survey Foot."
- Ground elevations are based on an observed GPS elevation (NAVD 1988 DATUM).
- IMPROVEMENTS: See LOCATION DRAWING for all visible improvements within 500' of disturbed area.
- SURFACE USE: RANGELAND
- INSTRUMENT OPERATOR: BRIAN ROTTINGHAUS
- NEAREST EXISTING WELL: MOTIS 2, 4991' NE
- NEAREST CULTURAL ITEMS:
BUILDING: 5280'+
BUILDING UNIT: 5280'+
HIGH OCCUPANCY BUILDING UNIT: 5280'+
DESIGNATED OUTSIDE ACTIVITY AREA: 5280'+
PUBLIC ROAD: 5280'+
ABOVEGROUND UTILITY: 5280'+
RAILROAD: 5280'+
PROPERTY LINE: 352' W

SURFACE LOCATION

LAT: 40.77445N
LONG: 103.82038W
PDOP: 2.2
ELEV: 4656'
1/4, 1/4: SW1/4SW1/4

BOTTOM HOLE

LAT: 40.80016N
LONG: 103.82076W

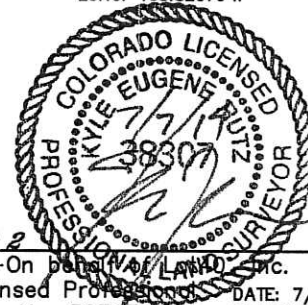
LEGEND

- = ALIQUOT MONUMENT AS DESCRIBED
○ = CALCULATED POSITION

SHEET 1 OF 2

Kyle E. Rutz-On behalf of Lat40°, Inc.
Colorado Licensed Professional
Land Surveyor No. 38307

DATE: 7/7/2014
PROJECT#: 2013115



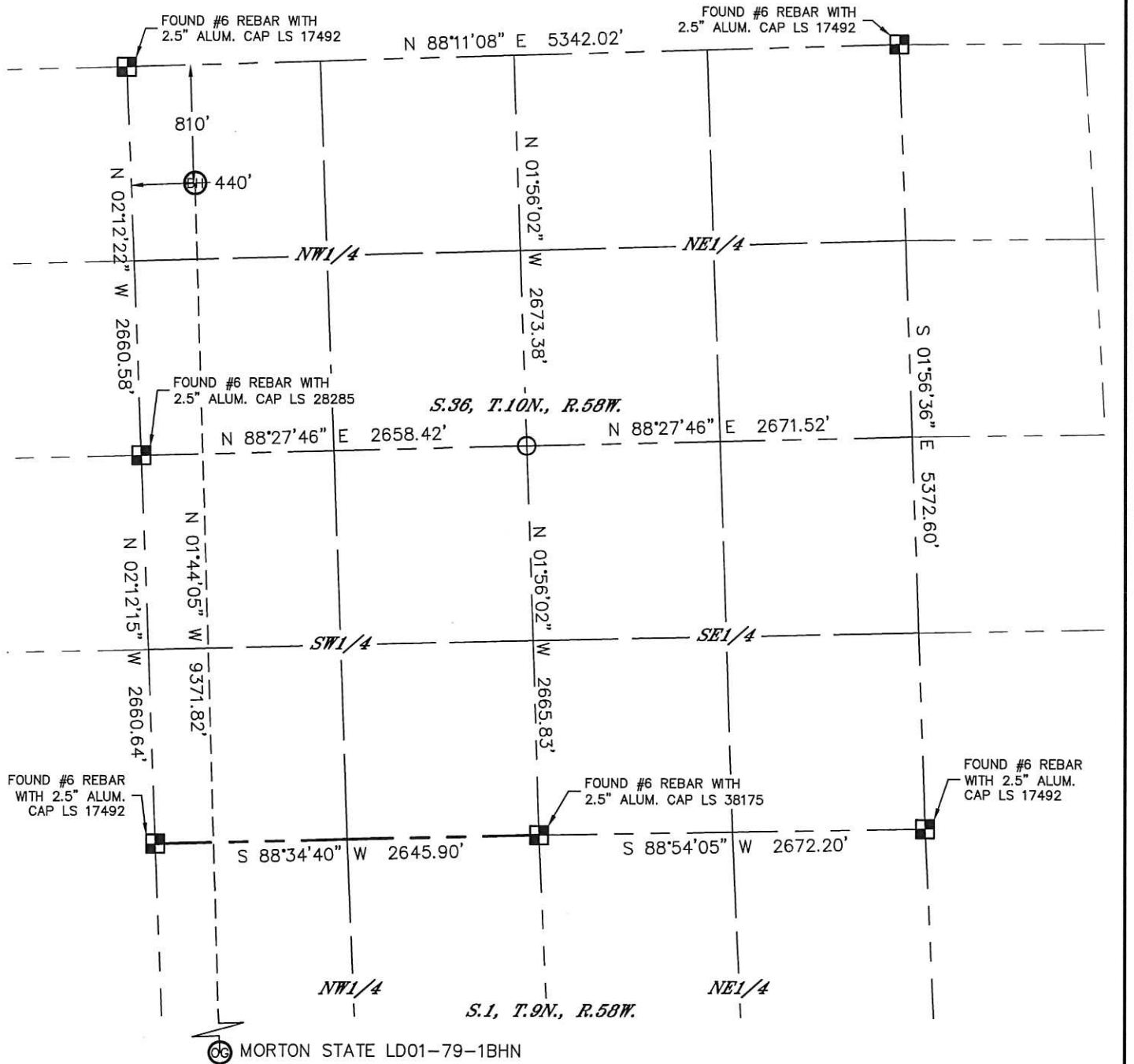


Lat40°, Inc. 1635 Foxtrail Drive, Suite 325 Loveland, CO 970-776-3321

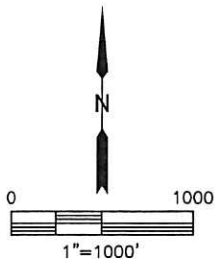
WELL LOCATION CERTIFICATE

THIS MAP DOES NOT REPRESENT A BOUNDARY SURVEY

SECTION: 1
TOWNSHIP: 9N
RANGE: 58W



MORTON STATE LD01-79-1BHN



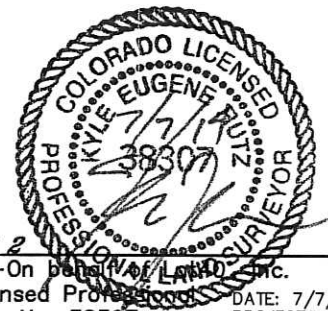
LEGEND

- = ALIQUOT MONUMENT AS DESCRIBED
- = CALCULATED POSITION

SHEET 2 OF 2

Kyle E. Rutz-On behalf of Lat40, Inc.
Colorado Licensed Professional
Land Surveyor No. 38307

DATE: 7/7/2014
PROJECT#: 2013115



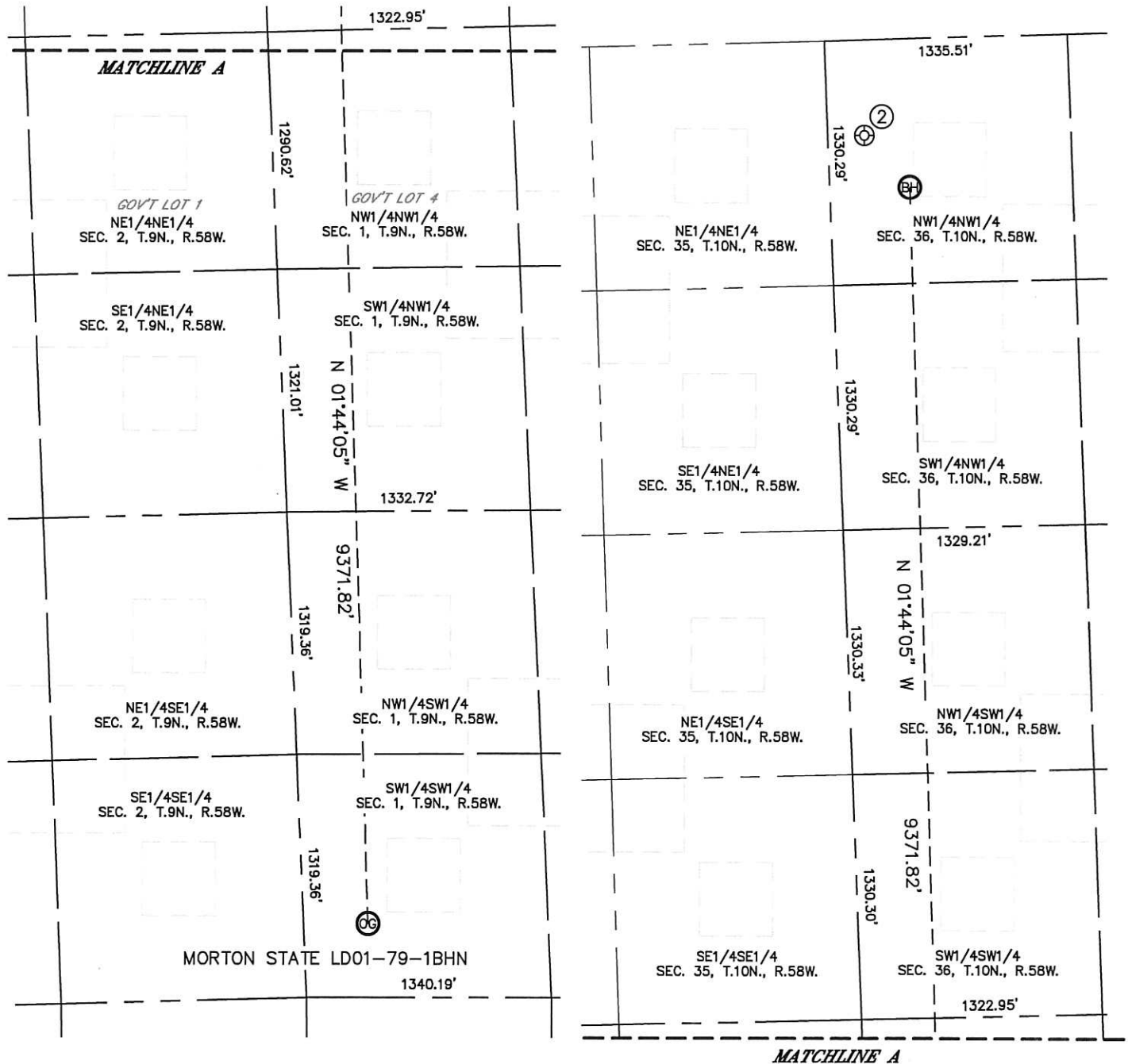


Lat40°, Inc. 1635 Foxtrail Drive, Suite 325 Loveland, CO 970-776-3321

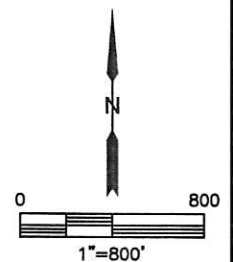
SITE SKETCH

MORTON STATE LD01-79-1BHN

SECTION: 1
TOWNSHIP: 9N
RANGE: 58W



WELL NO.	WELL NAME	SHL FOOTAGE				SHL LAT°	SHL LONG°	PDOP	ELEV (FT.)	1/4/1/4
2	CASTER PC LA 36-68HN	520	FNL	200	FWL	40.80095	-103.82165	1.9	4695	NWNW



DATE: 7/7/2014
PROJECT#: 2013115