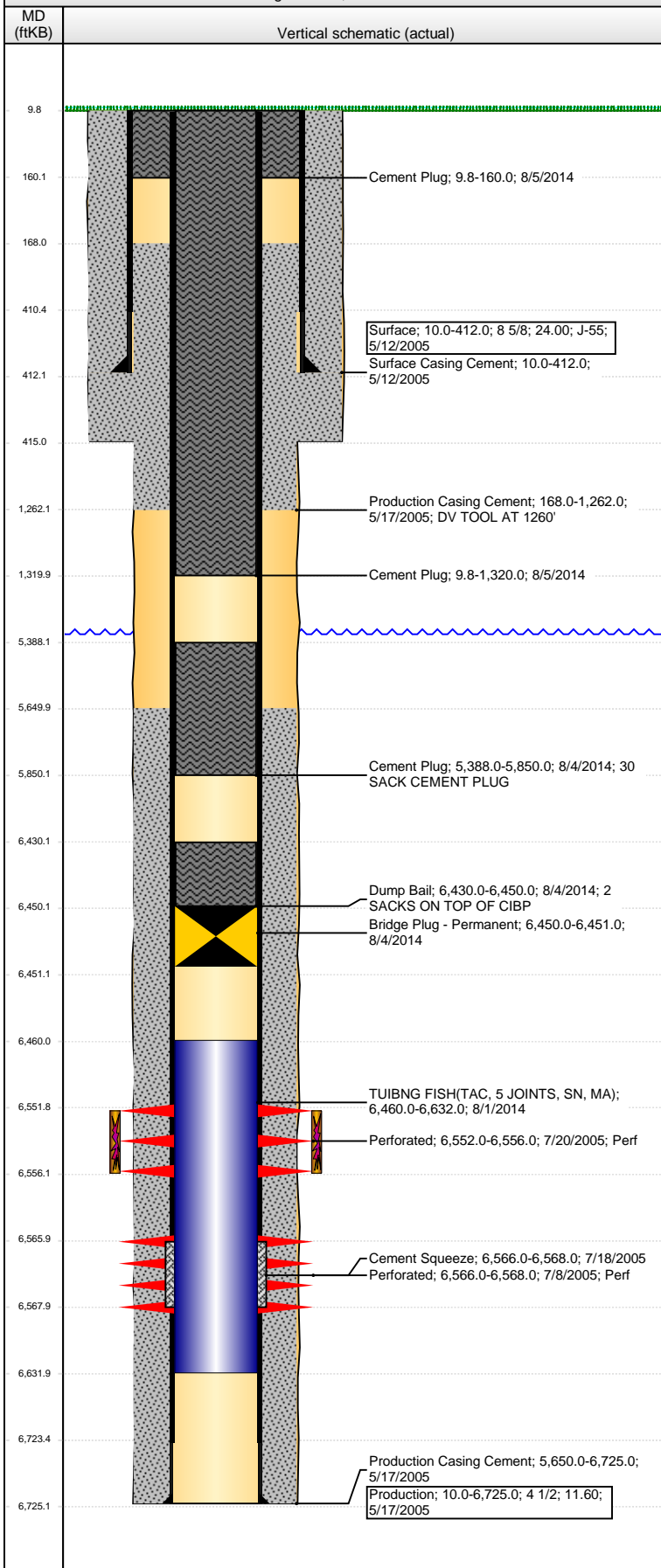


**Well Name: PETERSON 1-35**

VERTICAL - Original Hole, 8/22/2014 10:40:11 AM



Well Header			
API	Business Unit	District	Well Config
05-123-22936	DJ BASIN	25	VERTICAL
Original KB Elevation (ft)	KB - GL / MSL (ftKB)	Spud Date	P & A Date
4,872.00	10.00	5/12/2005	8/4/2014
Comment			
POSSIBLE CEMENT RETAINER REMNANTS HUNG UP AT 6680'.			
Directions To Well			
Congressional Location			
Quarter 1	Quarter 2	Quarter 3	Quarter 4
	NW	NE	NE
Section	Township	Twntshp N...	Range
35	8 N		59 W
Bottom Hole Location			
North-South Distance (ft)	From N or S Line	East-West Distance (ft)	From E or W Line
Plug Back Total Depths			
Date	Depth (ftKB)	Method	Com
Wellbore Sections			
Section Des	Size (in)	Act Top, MD (ftKB)	Act Btm, MD (ftKB)
SURFACE	12 1/4	10.0	415.0
PRODUCTION	7 7/8	415.0	6,725.0
Zone Statuses			
Zone Name	Status Date	Status	Job
	8/4/2014	P&A	ABANDON WELL, 7/29/2014 10:00
Casing Strings			
Surface, 412.0ftKB			
Casing Description	Run Date	OD (in)	Wt/Len (l...)
Surface	5/12/2005	8 5/8	24.00
Grade	Top, MD (ft...)	MD (ftKB)	
J-55	10.0	412.0	
Production, 6,725.0ftKB			
Casing Description	Run Date	OD (in)	Wt/Len (l...)
Production	5/17/2005	4 1/2	11.60
Grade	Top, MD (ft...)	MD (ftKB)	
J-55	10.0	6,725.0	
Cement			
Description	Top Depth (ftKB)	Bottom Depth (ftKB)	
Surface Casing Cement	10.0	412.0	
Description	Top Depth (ftKB)	Bottom Depth (ftKB)	
Production Casing Cement	168.0	1,262.0	
Description	Top Depth (ftKB)	Bottom Depth (ftKB)	
Production Casing Cement	5,650.0	6,725.0	
Description	Top Depth (ftKB)	Bottom Depth (ftKB)	
Cement Squeeze	6,566.0	6,568.0	
Description	Top Depth (ftKB)	Bottom Depth (ftKB)	
Dump Bail	6,430.0	6,450.0	
Description	Top Depth (ftKB)	Bottom Depth (ftKB)	
Cement Plug	5,388.0	5,850.0	
Description	Top Depth (ftKB)	Bottom Depth (ftKB)	
Cement Plug	9.8	1,320.0	
Description	Top Depth (ftKB)	Bottom Depth (ftKB)	
Cement Plug	9.8	160.0	
Tubing Components			
Item Des	OD (in)	Wt (lb/ft)	Grade
Perforation Data			
Zone	Bnch/St g	Entered Shot Total	Top (ftKB)
<zonename>, Original Hole		24	6,552.00
<zonename>, Original Hole		12	6,566.00
			Btm (ftKB)
			6,556.00
			6,568.00
			Date
			7/20/2005
			7/8/2005
Stimulations & Treatments			
Date	Zone	Primary Job Type	
7/29/2005	<zonename>, Original Hole	DRILLING/COMPLETION - ORIGINAL	
Technical Result		Tech Result Details	Tech Result Note
Comment			
Other In Hole			
Run Date	Des	OD (in)	Top (ftKB)
8/1/2014	TUBING FISH(TAC, 5 JOINTS, SN, MA)	3.99	6,460.0
8/4/2014	Bridge Plug - Permanent	3.99	6,450.0
			Btm (ftKB)
			6,632.0
			6,451.0

**Well Name: PETERSON 1-35**

VERTICAL - Original Hole, 8/22/2014 10:40:14 AM

**Logs**

