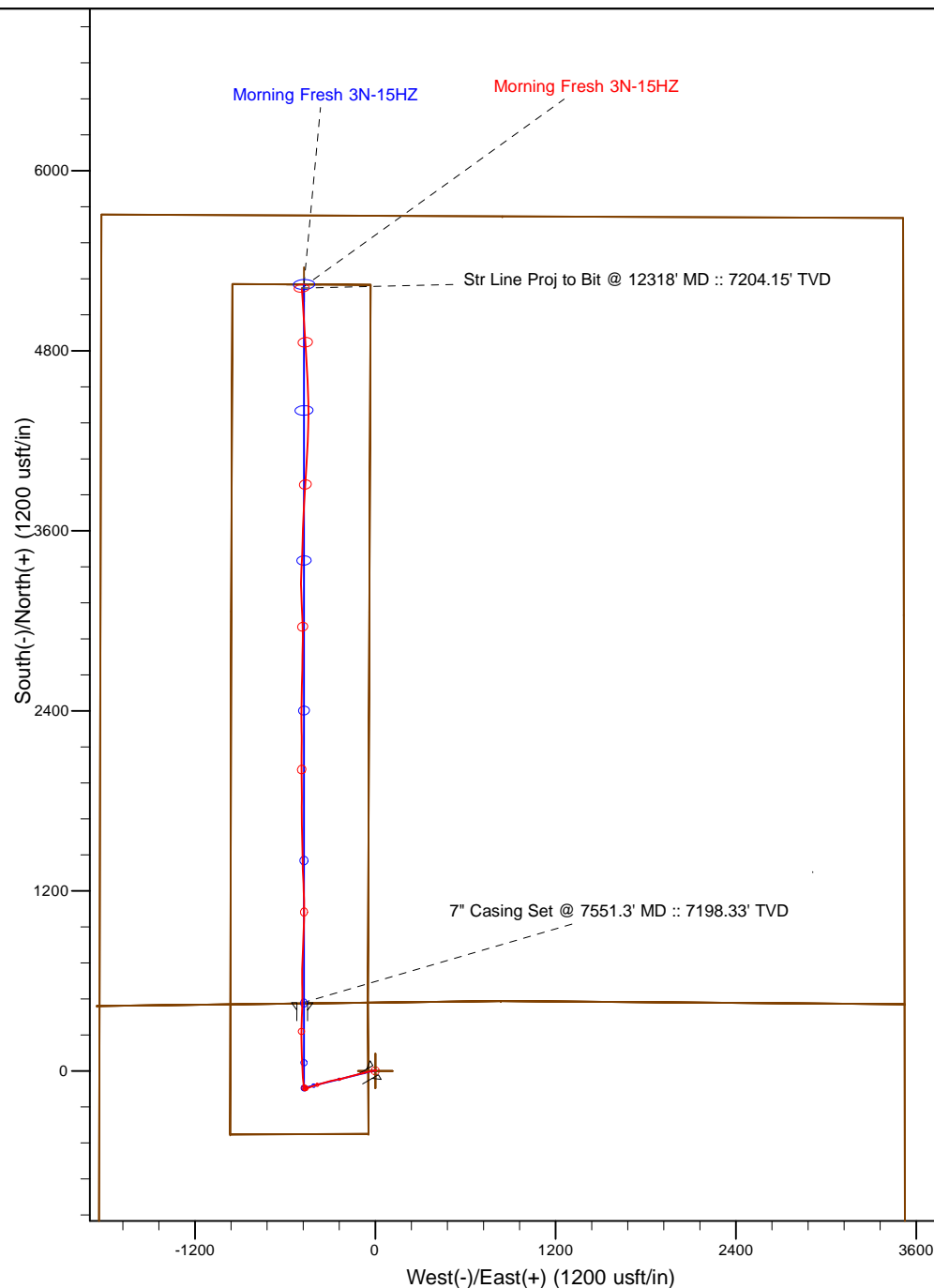
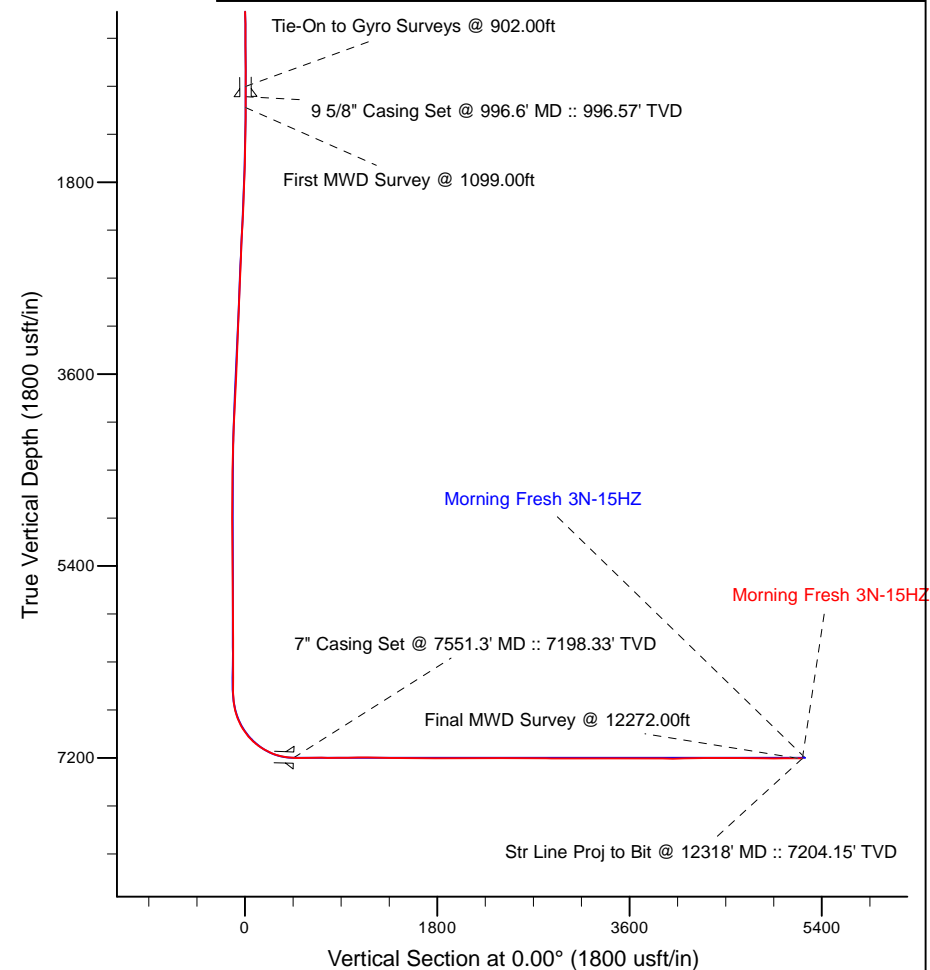


Project: Weld County, CO (NAD 83)
 Site: Sec. 22-T3N-R66W
 Well: Morning Fresh 3N-15HZ
 Wellbore: Plan B
 Design: Actual Field Surveys



LEGEND

- Morning Fresh 3N-15HZ, Plan B, Rev B0 V0
- Actual Field Surveys



7" Casing: ~4.27' FSL, ~1366.69' FWL
 Lat/Long: 40.217831 N, -104.768156 E
 State Planes - CO Northern: 1,323,041.39' N, 3,204,371.52' E
 Location: Sec. 15-T3N-R66W

BHL: ~485.62' FNL, ~1336.37' FWL
 Lat/Long: 40.230905 N, -104.768169 E
 State Planes - CO Northern: 1,327,803.88' N, 3,204,328.75' E
 Location: Sec. 15-T3N-R66W

WELL DETAILS: Morning Fresh 3N-15HZ	
Ground Level:	4884.00
RKB=13' @ 4897.00usft (Ensign 132)	
Design: Actual Field Surveys (Morning Fresh 3N-15HZ/Plan B)	
Created By: Clint Eshelman	Date: 6/30/2014
Reviewed: _____	Date: _____

Anadarko Petroleum Corp.

Weld County, CO (NAD 83)

Sec. 22-T3N-R66W

Morning Fresh 3N-15HZ

Plan B

Design: Actual Field Surveys

Sperry Drilling Services

Standard Report

30 June, 2014

Well Coordinates: 1,322,591.12 N, 3,204,861.16 E (40° 12' 59.70" N, 104° 45' 59.10" W)

Ground Level: 4,884.00 usft

Local Coordinate Origin:

Viewing Datum:

TVDs to System:

North Reference:

Unit System:

Geodetic Scale Factor Applied

Version: 5000.1 Build: 70

Centered on Well Morning Fresh 3N-15HZ

RKB=13' @ 4897.00usft (Ensign 132)

N

True

API - US Survey Feet - Custom

HALLIBURTON

Design Report for Morning Fresh 3N-15HZ - Actual Field Surveys

Measured Depth (usft)	Inclination (°)	Azimuth (°)	Vertical Depth (usft)	+N/-S (usft)	+E/-W (usft)	Vertical Section (usft)	Dogleg Rate (°/100usft)
0.00	0.00	0.00	0.00	0.00	0.00	0.00	0.00
13.00	0.00	0.00	13.00	0.00	0.00	0.00	0.00
113.00	0.75	20.04	113.00	0.61	0.22	0.61	0.75
213.00	0.57	25.50	212.99	1.68	0.66	1.68	0.19
313.00	0.63	55.15	312.99	2.44	1.33	2.44	0.31
413.00	0.32	68.07	412.98	2.86	2.04	2.86	0.33
513.00	0.20	127.13	512.98	2.86	2.44	2.86	0.28
613.00	0.21	308.63	612.98	2.87	2.43	2.87	0.41
713.00	0.49	346.06	712.98	3.40	2.19	3.40	0.35
813.00	0.52	11.64	812.97	4.26	2.17	4.26	0.23
902.00	0.43	40.75	901.97	4.91	2.47	4.91	0.29
Tie-On to Gyro Surveys @ 902.00ft							
996.60	0.29	59.98	996.57	5.30	2.92	5.30	0.19
9 5/8" Casing Set @ 996.6' MD :: 996.57' TVD							
1,099.00	0.23	101.78	1,098.97	5.38	3.34	5.38	0.19
First MWD Survey @ 1099.00ft							
1,193.00	0.32	113.38	1,192.97	5.24	3.77	5.24	0.11
1,287.00	1.18	260.01	1,286.96	4.97	3.06	4.97	1.55
1,381.00	3.39	260.26	1,380.88	4.33	-0.64	4.33	2.35
1,475.00	5.47	254.96	1,474.60	2.70	-7.70	2.70	2.25
1,570.00	7.68	256.23	1,568.97	0.01	-18.24	0.01	2.33
1,664.00	9.13	260.20	1,661.95	-2.75	-31.69	-2.75	1.66
1,758.00	10.66	256.64	1,754.55	-6.03	-47.50	-6.03	1.75
1,852.00	10.92	256.57	1,846.89	-10.11	-64.62	-10.11	0.28
1,947.00	10.63	255.12	1,940.22	-14.45	-81.84	-14.45	0.42
2,041.00	10.42	256.53	2,032.64	-18.65	-98.49	-18.65	0.35
2,135.00	9.94	255.89	2,125.16	-22.61	-114.62	-22.61	0.52
2,229.00	9.51	255.45	2,217.80	-26.54	-130.01	-26.54	0.46
2,323.00	8.85	257.64	2,310.60	-30.04	-144.59	-30.04	0.79
2,417.00	9.34	254.68	2,403.42	-33.60	-159.01	-33.60	0.72
2,512.00	8.37	252.00	2,497.29	-37.78	-173.02	-37.78	1.11
2,606.00	9.01	252.56	2,590.21	-42.10	-186.55	-42.10	0.69
2,700.00	10.36	256.54	2,682.87	-46.27	-201.79	-46.27	1.60
2,794.00	10.78	256.01	2,775.27	-50.36	-218.54	-50.36	0.46
2,888.00	10.69	257.53	2,867.63	-54.37	-235.58	-54.37	0.32
2,983.00	10.67	259.01	2,960.98	-57.95	-252.82	-57.95	0.29
3,078.00	9.91	259.32	3,054.45	-61.14	-269.49	-61.14	0.80
3,173.00	8.42	258.37	3,148.24	-64.06	-284.33	-64.06	1.58
3,268.00	9.75	256.66	3,242.04	-67.32	-298.97	-67.32	1.43
3,363.00	8.74	256.29	3,335.81	-70.88	-313.81	-70.88	1.06
3,458.00	9.04	251.45	3,429.67	-74.97	-327.90	-74.97	0.85
3,554.00	9.40	252.09	3,524.43	-79.78	-342.51	-79.78	0.39
3,649.00	8.91	253.12	3,618.22	-84.30	-356.93	-84.30	0.54
3,744.00	9.31	254.02	3,712.02	-88.55	-371.36	-88.55	0.45
3,839.00	9.40	254.72	3,805.75	-92.71	-386.23	-92.71	0.15
3,934.00	8.19	252.85	3,899.64	-96.75	-400.18	-96.75	1.31
4,029.00	7.24	253.85	3,993.77	-100.41	-412.40	-100.41	1.01
4,124.00	7.24	250.14	4,088.02	-104.11	-423.78	-104.11	0.49
4,219.00	6.05	249.65	4,182.38	-107.89	-434.10	-107.89	1.25
4,313.00	5.10	247.89	4,275.93	-111.18	-442.62	-111.18	1.03

Design Report for Morning Fresh 3N-15HZ - Actual Field Surveys

Measured Depth (usft)	Inclination (°)	Azimuth (°)	Vertical Depth (usft)	+N/-S (usft)	+E/-W (usft)	Vertical Section (usft)	Dogleg Rate (°/100usft)
4,409.00	4.66	245.98	4,371.58	-114.37	-450.13	-114.37	0.49
4,504.00	4.27	245.54	4,466.30	-117.41	-456.88	-117.41	0.41
4,598.00	2.97	252.92	4,560.11	-119.57	-462.39	-119.57	1.47
4,693.00	1.76	279.32	4,655.03	-120.06	-466.18	-120.06	1.68
4,789.00	0.74	56.23	4,751.01	-119.48	-467.12	-119.48	2.45
4,883.00	1.27	96.03	4,845.00	-119.25	-465.58	-119.25	0.90
4,978.00	0.44	57.39	4,939.99	-119.16	-464.23	-119.16	1.02
5,074.00	0.37	27.62	5,035.99	-118.69	-463.77	-118.69	0.23
5,169.00	0.52	44.35	5,130.98	-118.11	-463.33	-118.11	0.21
5,264.00	0.46	40.72	5,225.98	-117.51	-462.78	-117.51	0.07
5,359.00	0.34	30.60	5,320.98	-116.98	-462.39	-116.98	0.15
5,454.00	0.33	355.76	5,415.98	-116.47	-462.26	-116.47	0.21
5,549.00	0.29	344.40	5,510.98	-115.96	-462.35	-115.96	0.08
5,645.00	0.22	334.84	5,606.97	-115.56	-462.49	-115.56	0.09
5,739.00	0.46	328.91	5,700.97	-115.07	-462.76	-115.07	0.26
5,835.00	0.44	332.71	5,796.97	-114.42	-463.13	-114.42	0.04
5,930.00	0.63	333.07	5,891.97	-113.63	-463.54	-113.63	0.20
6,025.00	1.08	308.34	5,986.95	-112.61	-464.47	-112.61	0.60
6,120.00	1.10	292.08	6,081.94	-111.71	-466.02	-111.71	0.33
6,215.00	0.89	284.13	6,176.92	-111.18	-467.58	-111.18	0.26
6,310.00	0.31	256.08	6,271.92	-111.07	-468.55	-111.07	0.67
6,406.00	0.48	224.56	6,367.92	-111.42	-469.08	-111.42	0.28
6,501.00	0.41	202.62	6,462.91	-112.01	-469.49	-112.01	0.19
6,596.00	0.77	238.53	6,557.91	-112.66	-470.17	-112.66	0.53
6,644.00	2.71	338.06	6,605.89	-111.78	-470.87	-111.78	6.12
6,691.00	5.74	342.50	6,652.76	-108.50	-471.99	-108.50	6.48
6,786.00	13.53	347.33	6,746.35	-93.11	-475.86	-93.11	8.24
6,881.00	21.78	355.52	6,836.81	-64.64	-479.68	-64.64	9.05
6,976.00	30.77	355.75	6,921.90	-22.75	-482.86	-22.75	9.46
7,071.00	40.86	358.31	6,998.84	32.69	-485.59	32.69	10.74
7,166.00	50.16	358.13	7,065.35	100.36	-487.70	100.36	9.79
7,214.00	55.91	358.20	7,094.20	138.67	-488.93	138.67	11.98
7,261.00	60.15	358.53	7,119.08	178.52	-490.06	178.52	9.04
7,309.00	63.16	358.72	7,141.86	220.75	-491.07	220.75	6.28
7,356.00	68.42	0.54	7,161.13	263.60	-491.34	263.60	11.73
7,404.00	74.83	1.63	7,176.26	309.11	-490.47	309.11	13.53
7,452.00	78.78	2.78	7,187.21	355.80	-488.67	355.80	8.55
7,515.00	85.07	1.23	7,196.06	418.11	-486.49	418.11	10.28
7,551.30	87.76	0.56	7,198.33	454.33	-485.92	454.33	7.64
7" Casing Set @ 7551.3' MD :: 7198.33' TVD							
7,586.00	90.34	359.93	7,198.90	489.02	-485.77	489.02	7.64
7,681.00	90.37	358.84	7,198.31	584.01	-486.79	584.01	1.15
7,776.00	89.91	1.20	7,198.08	679.00	-486.76	679.00	2.53
7,871.00	89.35	2.37	7,198.69	773.95	-483.80	773.95	1.37
7,967.00	91.11	3.93	7,198.31	869.80	-478.53	869.80	2.45
8,061.00	90.83	0.58	7,196.72	963.70	-474.83	963.70	3.58
8,157.00	90.65	0.08	7,195.48	1,059.69	-474.28	1,059.69	0.55
8,251.00	89.85	358.94	7,195.07	1,153.68	-475.08	1,153.68	1.48
8,346.00	89.23	357.66	7,195.83	1,248.64	-477.90	1,248.64	1.50
8,441.00	88.92	357.74	7,197.36	1,343.55	-481.71	1,343.55	0.34
8,537.00	89.35	359.34	7,198.81	1,439.50	-484.16	1,439.50	1.73

Design Report for Morning Fresh 3N-15HZ - Actual Field Surveys

Measured Depth (usft)	Inclination (°)	Azimuth (°)	Vertical Depth (usft)	+N/-S (usft)	+E/-W (usft)	Vertical Section (usft)	Dogleg Rate (°/100usft)
8,632.00	89.11	358.97	7,200.09	1,534.48	-485.56	1,534.48	0.46
8,727.00	88.43	358.19	7,202.13	1,629.43	-487.91	1,629.43	1.09
8,822.00	90.22	0.66	7,203.25	1,724.41	-488.86	1,724.41	3.21
8,917.00	90.49	359.78	7,202.66	1,819.41	-488.50	1,819.41	0.97
9,012.00	89.57	359.47	7,202.61	1,914.40	-489.12	1,914.40	1.02
9,107.00	88.67	359.22	7,204.07	2,009.38	-490.21	2,009.38	0.98
9,202.00	90.80	0.58	7,204.51	2,104.37	-490.37	2,104.37	2.66
9,297.00	91.33	0.16	7,202.74	2,199.36	-489.76	2,199.36	0.71
9,393.00	90.06	358.57	7,201.58	2,295.34	-490.82	2,295.34	2.12
9,488.00	91.41	0.68	7,200.36	2,390.32	-491.44	2,390.32	2.64
9,583.00	90.52	1.69	7,198.76	2,485.28	-489.48	2,485.28	1.42
9,678.00	89.48	0.40	7,198.76	2,580.27	-487.75	2,580.27	1.74
9,773.00	88.74	1.42	7,200.23	2,675.24	-486.24	2,675.24	1.33
9,869.00	88.58	0.81	7,202.48	2,771.20	-484.37	2,771.20	0.66
9,964.00	89.69	1.21	7,203.91	2,866.17	-482.70	2,866.17	1.24
10,059.00	89.94	358.02	7,204.22	2,961.15	-483.34	2,961.15	3.37
10,154.00	90.00	357.45	7,204.27	3,056.08	-487.09	3,056.08	0.60
10,249.00	90.31	357.56	7,204.01	3,150.99	-491.23	3,150.99	0.35
10,344.00	90.06	359.20	7,203.70	3,245.95	-493.91	3,245.95	1.75
10,439.00	89.17	3.14	7,204.34	3,340.90	-491.97	3,340.90	4.25
10,534.00	89.72	2.44	7,205.26	3,435.79	-487.35	3,435.79	0.94
10,629.00	90.15	1.89	7,205.37	3,530.72	-483.76	3,530.72	0.73
10,724.00	89.94	1.09	7,205.30	3,625.68	-481.29	3,625.68	0.87
10,819.00	90.55	3.75	7,204.89	3,720.59	-477.28	3,720.59	2.87
10,913.00	89.91	3.62	7,204.51	3,814.39	-471.24	3,814.39	0.69
11,008.00	89.44	2.87	7,205.05	3,909.24	-465.86	3,909.24	0.93
11,103.00	89.48	4.18	7,205.95	4,004.05	-460.02	4,004.05	1.38
11,198.00	91.85	3.08	7,204.84	4,098.85	-454.01	4,098.85	2.75
11,293.00	91.57	2.46	7,202.01	4,193.69	-449.42	4,193.69	0.72
11,388.00	90.93	1.49	7,199.94	4,288.61	-446.14	4,288.61	1.22
11,483.00	90.31	0.21	7,198.91	4,383.60	-444.73	4,383.60	1.50
11,578.00	89.69	358.33	7,198.91	4,478.58	-445.94	4,478.58	2.08
11,672.00	89.17	357.68	7,199.84	4,572.52	-449.22	4,572.52	0.89
11,767.00	88.76	356.84	7,201.56	4,667.40	-453.76	4,667.40	0.98
11,862.00	89.69	356.08	7,202.85	4,762.20	-459.62	4,762.20	1.26
11,957.00	89.23	356.23	7,203.74	4,856.99	-465.99	4,856.99	0.51
12,052.00	90.65	356.72	7,203.84	4,951.80	-471.83	4,951.80	1.58
12,146.00	90.28	356.65	7,203.08	5,045.64	-477.27	5,045.64	0.40
12,241.00	89.54	355.76	7,203.23	5,140.43	-483.56	5,140.43	1.22
12,272.00	89.26	355.72	7,203.55	5,171.35	-485.86	5,171.35	0.91
Final MWD Survey @ 12272.00ft							
12,318.00	89.26	355.72	7,204.15	5,217.21	-489.29	5,217.21	0.00
Str Line Proj to Bit @ 12318' MD :: 7204.15' TVD							

Design Report for Morning Fresh 3N-15HZ - Actual Field Surveys

Design Annotations

Measured Depth (usft)	Vertical Depth (usft)	Local Coordinates		Comment
		+N/-S (usft)	+E/-W (usft)	
902.00	901.97	4.91	2.47	Tie-On to Gyro Surveys @ 902.00ft
1,099.00	1,098.97	5.38	3.34	First MWD Survey @ 1099.00ft
12,272.00	7,203.55	5,171.35	-485.86	Final MWD Survey @ 12272.00ft
12,318.00	7,204.15	5,217.21	-489.29	Str Line Proj to Bit @ 12318' MD :: 7204.15' TVD

Vertical Section Information

Angle Type	Target	Azimuth (°)	Origin Type	Origin +N/_S (usft)	Origin +E/-W (usft)	Start TVD (usft)
User	No Target (Freehand)	0.00	Slot	0.00	0.00	0.00

Survey tool program

From (usft)	To (usft)	Survey/Plan	Survey Tool
13.00	902.00	MS Energy Surveys	NS-GYRO-MS
1,099.00	7,586.00	MWD Vertical/Build Surveys	MWD+IFR1+SC
7,681.00	12,272.00	MWD Lateral Surveys	MWD+IFR1+SC

Casing Details

Measured Depth (usft)	Vertical Depth (usft)	Name	Casing Diameter (")	Hole Diameter (")
996.60	996.57	9 5/8" Casing Set @ 996.6' MD :: 996.57' TVD	9-5/8	13-1/2
7,551.30	7,198.33	7" Casing Set @ 7551.3' MD :: 7198.33' TVD	7	8-3/4

Design Report for Morning Fresh 3N-15HZ - Actual Field Surveys**Wellbore Targets**

Target Name - hit/miss target - Shape	Dip Angle (°)	Dip Dir. (°)	TVD (usft)	+N/-S (usft)	+E/-W (usft)	Northing (usft)	Easting (usft)	Latitude	Longitude
Morning Fresh 3N-15H- - actual wellpath hits target center - Polygon	0.00	0.00	0.00	0.00	0.00	1,322,591.12	3,204,861.16	40° 12' 59.702 N	104° 45' 59.098 W
Point 1				0.00	5,244.85	-950.91	1,327,827.70	3,203,866.94	
Point 2				0.00	5,240.81	-30.88	1,327,831.27	3,204,786.93	
Point 3				0.00	3,060.85	-38.97	1,325,651.41	3,204,796.87	
Point 4				0.00	455.60	-48.98	1,323,046.28	3,204,808.42	
Point 5				0.00	-419.62	-45.69	1,322,171.15	3,204,818.95	
Point 6				0.00	-423.09	-965.73	1,322,160.07	3,203,899.01	
Point 7				0.00	3,065.91	-959.00	1,325,648.86	3,203,876.87	
Morning Fresh 3N-15H- - actual wellpath hits target center - Point	0.00	0.00	0.00	0.00	0.00	1,322,591.12	3,204,861.16	40° 12' 59.702 N	104° 45' 59.098 W
Morning Fresh 3N-15H- - actual wellpath hits target center - Polygon	0.00	0.00	0.00	0.00	0.00	1,322,591.12	3,204,861.16	40° 12' 59.702 N	104° 45' 59.098 W
Point 1				0.00	5,708.70	-1,822.97	1,328,284.30	3,202,991.11	
Point 2				0.00	5,697.00	844.56	1,328,294.67	3,205,658.53	
Point 3				0.00	5,685.53	3,512.51	1,328,305.27	3,208,326.37	
Point 4				0.00	3,041.31	3,517.34	1,325,661.29	3,208,353.07	
Point 5				0.00	445.01	3,522.01	1,323,065.23	3,208,379.22	
Point 6				0.00	466.35	834.85	1,323,064.34	3,205,692.09	
Point 7				0.00	433.20	-1,852.81	1,323,008.96	3,203,004.91	
Point 8				0.00	466.35	834.85	1,323,064.34	3,205,692.09	
Point 9				0.00	445.01	3,522.01	1,323,065.23	3,208,379.22	
Point 10				0.00	-2,232.12	3,525.38	1,320,388.33	3,208,404.73	
Point 11				0.00	-4,780.23	3,529.21	1,317,840.45	3,208,429.64	
Point 12				0.00	-4,809.04	850.26	1,317,789.48	3,205,751.14	
Point 13				0.00	-4,837.90	-1,828.58	1,317,738.47	3,203,072.74	
Point 14				0.00	-2,206.21	-1,840.73	1,320,369.85	3,203,038.82	
Morning Fresh 3N-15H- - actual wellpath misses target center by 29.74usft at 12318.00usft MD (7204.15 TVD, 5217.21 N, -489.29 E) - Point	0.00	0.00	7,198.00	5,242.29	-474.53	1,327,829.08	3,204,343.30	40° 13' 51.506 N	104° 46' 5.216 W

Directional Difficulty Index

Average Dogleg over Survey:	1.69 °/100usft	Maximum Dogleg over Survey:	13.53 °/100usft at 7,404.00 usft
Net Tortousity applicable to Plans:	0.56 °/100usft	Directional Difficulty Index:	6.317

Audit Info

North Reference Sheet for Sec. 22-T3N-R66W - Morning Fresh 3N-15HZ - Plan B

All data is in US Feet unless otherwise stated. Directions and Coordinates are relative to True North Reference.

Vertical Depths are relative to RKB=13' @ 4897.00usft (Ensign 132). Northing and Easting are relative to Morning Fresh 3N-15HZ

Coordinate System is US State Plane 1983, Colorado Northern Zone using datum North American Datum 1983, ellipsoid GRS 1980

Projection method is Lambert Conformal Conic (2 parallel)

Central Meridian is 105° 30' 0.000 W°, Longitude Origin:0° 0' 0.000 E°, Latitude Origin:40° 47' 0.000 N°

False Easting: 3,000,000.00usft, False Northing: 1,000,000.00usft, Scale Reduction: 0.99995702

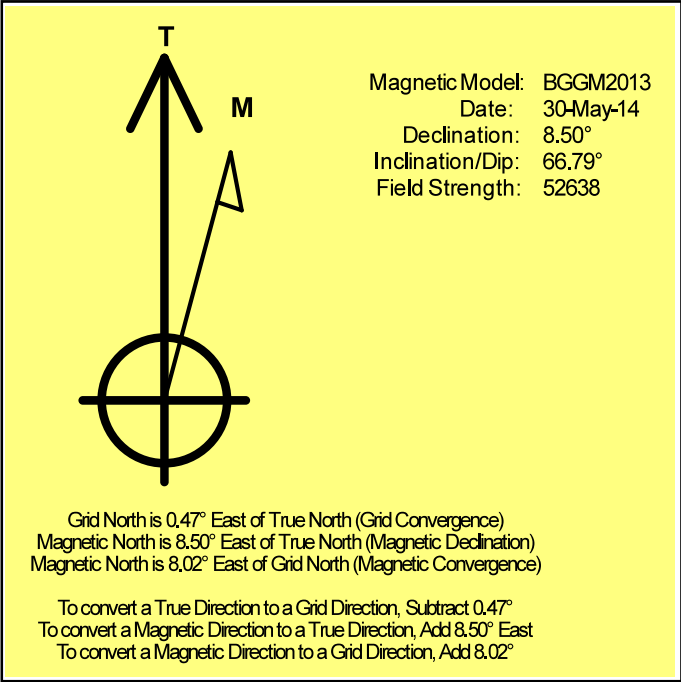
Grid Coordinates of Well: 1,322,591.12 usft N, 3,204,861.16 usft E

Geographical Coordinates of Well: 40° 12' 59.70" N, 104° 45' 59.10" W

Grid Convergence at Surface is: 0.47°

Based upon Minimum Curvature type calculations, at a Measured Depth of 12,318.00usft the Bottom Hole Displacement is 5,240.11usft in the Direction of 354.64° (True).

Magnetic Convergence at surface is: -8.02° (30 May 2014, , BGGM2013)



Anadarko Petroleum Corp.

Weld County, CO (NAD 83)

Sec. 22-T3N-R66W

Morning Fresh 3N-15HZ

Plan B

Design: Actual Field Surveys

Sperry Drilling Services

Geodetic Report

30 June, 2014

Well Coordinates: 1,322,591.12 N, 3,204,861.16 E (40° 12' 59.70" N, 104° 45' 59.10" W)

Ground Level: 4,884.00 usft

Local Coordinate Origin:

Viewing Datum:

TVDs to System:

North Reference:

Unit System:

Geodetic Scale Factor Applied

Version: 5000.1 Build: 70

Centered on Well Morning Fresh 3N-15HZ

RKB=13' @ 4897.00usft (Ensign 132)

N

True

Dec-Deg - API - US Survey Feet - Custom

HALLIBURTON

Design Report for Morning Fresh 3N-15HZ - Actual Field Surveys

Measured Depth (usft)	Inclination (°)	Azimuth (°)	Vertical Depth (usft)	Local Coordinates		Geographic Coordinates		UTM Coordinates	
				+N/-S (usft)	+E/-W (usft)	Latitude (usft)	Longitude (usft)	Northing (usft)	Easting (usft)
0.00	0.00	0.00	0.00	0.00	0.00	40.216584	-104.766416	1,322,591.12	3,204,861.16
13.00	0.00	0.00	13.00	0.00	0.00	40.216584	-104.766416	1,322,591.12	3,204,861.16
113.00	0.75	20.04	113.00	0.61	0.22	40.216586	-104.766415	1,322,591.74	3,204,861.38
213.00	0.57	25.50	212.99	1.68	0.66	40.216589	-104.766414	1,322,592.80	3,204,861.81
313.00	0.63	55.15	312.99	2.44	1.33	40.216591	-104.766412	1,322,593.57	3,204,862.47
413.00	0.32	68.07	412.98	2.86	2.04	40.216592	-104.766409	1,322,594.00	3,204,863.18
513.00	0.20	127.13	512.98	2.86	2.44	40.216592	-104.766408	1,322,594.00	3,204,863.57
613.00	0.21	308.63	612.98	2.87	2.43	40.216592	-104.766408	1,322,594.01	3,204,863.57
713.00	0.49	346.06	712.98	3.40	2.19	40.216593	-104.766408	1,322,594.53	3,204,863.32
813.00	0.52	11.64	812.97	4.26	2.17	40.216596	-104.766408	1,322,595.39	3,204,863.30
902.00	0.43	40.75	901.97	4.91	2.47	40.216598	-104.766407	1,322,596.04	3,204,863.60
996.60	0.29	59.98	996.57	5.30	2.92	40.216599	-104.766406	1,322,596.44	3,204,864.03
1,099.00	0.23	101.78	1,098.97	5.38	3.34	40.216599	-104.766404	1,322,596.53	3,204,864.46
1,193.00	0.32	113.38	1,192.97	5.24	3.77	40.216598	-104.766403	1,322,596.39	3,204,864.89
1,287.00	1.18	260.01	1,286.96	4.97	3.06	40.216598	-104.766405	1,322,596.11	3,204,864.18
1,381.00	3.39	260.26	1,380.88	4.33	-0.64	40.216596	-104.766419	1,322,595.45	3,204,860.49
1,475.00	5.47	254.96	1,474.60	2.70	-7.70	40.216591	-104.766444	1,322,593.75	3,204,853.44
1,570.00	7.68	256.23	1,568.97	0.01	-18.24	40.216584	-104.766482	1,322,590.98	3,204,842.92
1,664.00	9.13	260.20	1,661.95	-2.75	-31.69	40.216577	-104.766530	1,322,588.11	3,204,829.49
1,758.00	10.66	256.64	1,754.55	-6.03	-47.50	40.216568	-104.766586	1,322,584.70	3,204,813.71
1,852.00	10.92	256.57	1,846.89	-10.11	-64.62	40.216556	-104.766648	1,322,580.48	3,204,796.63
1,947.00	10.63	255.12	1,940.22	-14.45	-81.84	40.216544	-104.766709	1,322,576.00	3,204,779.45
2,041.00	10.42	256.53	2,032.64	-18.65	-98.49	40.216533	-104.766769	1,322,571.65	3,204,762.84
2,135.00	9.94	255.89	2,125.16	-22.61	-114.62	40.216522	-104.766827	1,322,567.56	3,204,746.74
2,229.00	9.51	255.45	2,217.80	-26.54	-130.01	40.216511	-104.766882	1,322,563.51	3,204,731.39
2,323.00	8.85	257.64	2,310.60	-30.04	-144.59	40.216502	-104.766934	1,322,559.89	3,204,716.84
2,417.00	9.34	254.68	2,403.42	-33.60	-159.01	40.216492	-104.766986	1,322,556.20	3,204,702.45
2,512.00	8.37	252.00	2,497.29	-37.78	-173.02	40.216480	-104.767036	1,322,551.91	3,204,688.47
2,606.00	9.01	252.56	2,590.21	-42.10	-186.55	40.216469	-104.767084	1,322,547.48	3,204,674.98
2,700.00	10.36	256.54	2,682.87	-46.27	-201.79	40.216457	-104.767139	1,322,543.18	3,204,659.77
2,794.00	10.78	256.01	2,775.27	-50.36	-218.54	40.216446	-104.767199	1,322,538.95	3,204,643.06
2,888.00	10.69	257.53	2,867.63	-54.37	-235.58	40.216435	-104.767260	1,322,534.80	3,204,626.05
2,983.00	10.67	259.01	2,960.98	-57.95	-252.82	40.216425	-104.767322	1,322,531.08	3,204,608.84
3,078.00	9.91	259.32	3,054.45	-61.14	-269.49	40.216416	-104.767381	1,322,527.75	3,204,592.20
3,173.00	8.42	258.37	3,148.24	-64.06	-284.33	40.216408	-104.767434	1,322,524.71	3,204,577.38
3,268.00	9.75	256.66	3,242.04	-67.32	-298.97	40.216399	-104.767487	1,322,521.33	3,204,562.77
3,363.00	8.74	256.29	3,335.81	-70.88	-313.81	40.216389	-104.767540	1,322,517.65	3,204,547.96
3,458.00	9.04	251.45	3,429.67	-74.97	-327.90	40.216378	-104.767590	1,322,513.44	3,204,533.91
3,554.00	9.40	252.09	3,524.43	-79.78	-342.51	40.216365	-104.767643	1,322,508.51	3,204,519.34
3,649.00	8.91	253.12	3,618.22	-84.30	-356.93	40.216353	-104.767694	1,322,503.87	3,204,504.95
3,744.00	9.31	254.02	3,712.02	-88.55	-371.36	40.216341	-104.767746	1,322,499.50	3,204,490.56
3,839.00	9.40	254.72	3,805.75	-92.71	-386.23	40.216330	-104.767799	1,322,495.22	3,204,475.73



Design Report for Morning Fresh 3N-15HZ - Actual Field Surveys

Measured Depth (usft)	Inclination (°)	Azimuth (°)	Vertical Depth (usft)	Local Coordinates		Geographic Coordinates		UTM Coordinates	
				+N/-S (usft)	+E/-W (usft)	Latitude (usft)	Longitude (usft)	Northing (usft)	Easting (usft)
3,934.00	8.19	252.85	3,899.64	-96.75	-400.18	40.216318	-104.767849	1,322,491.06	3,204,461.81
4,029.00	7.24	253.85	3,993.77	-100.41	-412.40	40.216308	-104.767893	1,322,487.30	3,204,449.63
4,124.00	7.24	250.14	4,088.02	-104.11	-423.78	40.216298	-104.767934	1,322,483.51	3,204,438.28
4,219.00	6.05	249.65	4,182.38	-107.89	-434.10	40.216288	-104.767971	1,322,479.65	3,204,427.99
4,313.00	5.10	247.89	4,275.93	-111.18	-442.62	40.216279	-104.768001	1,322,476.28	3,204,419.50
4,409.00	4.66	245.98	4,371.58	-114.37	-450.13	40.216270	-104.768028	1,322,473.03	3,204,412.01
4,504.00	4.27	245.54	4,466.30	-117.41	-456.88	40.216262	-104.768052	1,322,469.94	3,204,405.29
4,598.00	2.97	252.92	4,560.11	-119.57	-462.39	40.216256	-104.768072	1,322,467.73	3,204,399.80
4,693.00	1.76	279.32	4,655.03	-120.06	-466.18	40.216254	-104.768086	1,322,467.21	3,204,396.01
4,789.00	0.74	56.23	4,751.01	-119.48	-467.12	40.216256	-104.768089	1,322,467.79	3,204,395.06
4,883.00	1.27	96.03	4,845.00	-119.25	-465.58	40.216257	-104.768083	1,322,468.03	3,204,396.60
4,978.00	0.44	57.39	4,939.99	-119.16	-464.23	40.216257	-104.768079	1,322,468.12	3,204,397.96
5,074.00	0.37	27.62	5,035.99	-118.69	-463.77	40.216258	-104.768077	1,322,468.60	3,204,398.41
5,169.00	0.52	44.35	5,130.98	-118.11	-463.33	40.216260	-104.768075	1,322,469.19	3,204,398.85
5,264.00	0.46	40.72	5,225.98	-117.51	-462.78	40.216261	-104.768073	1,322,469.79	3,204,399.39
5,359.00	0.34	30.60	5,320.98	-116.98	-462.39	40.216263	-104.768072	1,322,470.32	3,204,399.78
5,454.00	0.33	355.76	5,415.98	-116.47	-462.26	40.216264	-104.768071	1,322,470.84	3,204,399.90
5,549.00	0.29	344.40	5,510.98	-115.96	-462.35	40.216266	-104.768072	1,322,471.34	3,204,399.81
5,645.00	0.22	334.84	5,606.97	-115.56	-462.49	40.216267	-104.768072	1,322,471.74	3,204,399.66
5,739.00	0.46	328.91	5,700.97	-115.07	-462.76	40.216268	-104.768073	1,322,472.23	3,204,399.39
5,835.00	0.44	332.71	5,796.97	-114.42	-463.13	40.216270	-104.768075	1,322,472.88	3,204,399.01
5,930.00	0.63	333.07	5,891.97	-113.63	-463.54	40.216272	-104.768076	1,322,473.67	3,204,398.60
6,025.00	1.08	308.34	5,986.95	-112.61	-464.47	40.216275	-104.768079	1,322,474.68	3,204,397.66
6,120.00	1.10	292.08	6,081.94	-111.71	-466.02	40.216277	-104.768085	1,322,475.56	3,204,396.10
6,215.00	0.89	284.13	6,176.92	-111.18	-467.58	40.216279	-104.768091	1,322,476.07	3,204,394.54
6,310.00	0.31	256.08	6,271.92	-111.07	-468.55	40.216279	-104.768094	1,322,476.19	3,204,393.57
6,406.00	0.48	224.56	6,367.92	-111.42	-469.08	40.216278	-104.768096	1,322,475.83	3,204,393.04
6,501.00	0.41	202.62	6,462.91	-112.01	-469.49	40.216277	-104.768097	1,322,475.23	3,204,392.63
6,596.00	0.77	238.53	6,557.91	-112.66	-470.17	40.216275	-104.768100	1,322,474.58	3,204,391.96
6,644.00	2.71	338.06	6,605.89	-111.78	-470.87	40.216277	-104.768102	1,322,475.46	3,204,391.26
6,691.00	5.74	342.50	6,652.76	-108.50	-471.99	40.216286	-104.768106	1,322,478.72	3,204,390.11
6,786.00	13.53	347.33	6,746.35	-93.11	-475.86	40.216328	-104.768120	1,322,494.08	3,204,386.11
6,881.00	21.78	355.52	6,836.81	-64.64	-479.68	40.216407	-104.768134	1,322,522.52	3,204,382.05
6,976.00	30.77	355.75	6,921.90	-22.75	-482.86	40.216522	-104.768145	1,322,564.38	3,204,378.52
7,071.00	40.86	358.31	6,998.84	32.69	-485.59	40.216674	-104.768155	1,322,619.79	3,204,375.34
7,166.00	50.16	358.13	7,065.35	100.36	-487.70	40.216860	-104.768163	1,322,687.43	3,204,372.67
7,214.00	55.91	358.20	7,094.20	138.67	-488.93	40.216965	-104.768167	1,322,725.74	3,204,371.13
7,261.00	60.15	358.53	7,119.08	178.52	-490.06	40.217074	-104.768171	1,322,765.57	3,204,369.66
7,309.00	63.16	358.72	7,141.86	220.75	-491.07	40.217190	-104.768175	1,322,807.79	3,204,368.30
7,356.00	68.42	0.54	7,161.13	263.60	-491.34	40.217308	-104.768176	1,322,850.63	3,204,367.68
7,404.00	74.83	1.63	7,176.26	309.11	-490.47	40.217433	-104.768172	1,322,896.15	3,204,368.18
7,452.00	78.78	2.78	7,187.21	355.80	-488.67	40.217561	-104.768166	1,322,942.85	3,204,369.59

Design Report for Morning Fresh 3N-15HZ - Actual Field Surveys

Measured Depth (usft)	Inclination (°)	Azimuth (°)	Vertical Depth (usft)	Local Coordinates		Geographic Coordinates		UTM Coordinates	
				+N/-S (usft)	+E/-W (usft)	Latitude (usft)	Longitude (usft)	Northing (usft)	Easting (usft)
7,515.00	85.07	1.23	7,196.06	418.11	-486.49	40.217732	-104.768158	1,323,005.17	3,204,371.25
7,551.30	87.76	0.56	7,198.33	454.33	-485.92	40.217831	-104.768156	1,323,041.39	3,204,371.52
7,586.00	90.34	359.93	7,198.90	489.02	-485.77	40.217926	-104.768156	1,323,076.08	3,204,371.38
7,681.00	90.37	358.84	7,198.31	584.01	-486.79	40.218187	-104.768159	1,323,171.06	3,204,369.57
7,776.00	89.91	1.20	7,198.08	679.00	-486.76	40.218448	-104.768159	1,323,266.04	3,204,368.82
7,871.00	89.35	2.37	7,198.69	773.95	-483.80	40.218709	-104.768149	1,323,361.01	3,204,370.99
7,967.00	91.11	3.93	7,198.31	869.80	-478.53	40.218972	-104.768130	1,323,456.89	3,204,375.48
8,061.00	90.83	0.58	7,196.72	963.70	-474.83	40.219229	-104.768117	1,323,550.82	3,204,378.40
8,157.00	90.65	0.08	7,195.48	1,059.69	-474.28	40.219493	-104.768115	1,323,646.81	3,204,378.16
8,251.00	89.85	358.94	7,195.07	1,153.68	-475.08	40.219751	-104.768117	1,323,740.78	3,204,376.57
8,346.00	89.23	357.66	7,195.83	1,248.64	-477.90	40.220012	-104.768128	1,323,835.71	3,204,372.97
8,441.00	88.92	357.74	7,197.36	1,343.55	-481.71	40.220272	-104.768141	1,323,930.58	3,204,368.37
8,537.00	89.35	359.34	7,198.81	1,439.50	-484.16	40.220535	-104.768150	1,324,026.51	3,204,365.13
8,632.00	89.11	358.97	7,200.09	1,534.48	-485.56	40.220796	-104.768155	1,324,121.47	3,204,362.95
8,727.00	88.43	358.19	7,202.13	1,629.43	-487.91	40.221057	-104.768163	1,324,216.39	3,204,359.81
8,822.00	90.22	0.66	7,203.25	1,724.41	-488.86	40.221318	-104.768167	1,324,311.35	3,204,358.07
8,917.00	90.49	359.78	7,202.66	1,819.41	-488.50	40.221578	-104.768166	1,324,406.34	3,204,357.65
9,012.00	89.57	359.47	7,202.61	1,914.40	-489.12	40.221839	-104.768168	1,324,501.33	3,204,356.24
9,107.00	88.67	359.22	7,204.07	2,009.38	-490.21	40.222100	-104.768172	1,324,596.29	3,204,354.37
9,202.00	90.80	0.58	7,204.51	2,104.37	-490.37	40.222361	-104.768172	1,324,691.27	3,204,353.42
9,297.00	91.33	0.16	7,202.74	2,199.36	-489.76	40.222621	-104.768170	1,324,786.25	3,204,353.25
9,393.00	90.06	358.57	7,201.58	2,295.34	-490.82	40.222885	-104.768174	1,324,882.22	3,204,351.39
9,488.00	91.41	0.68	7,200.36	2,390.32	-491.44	40.223145	-104.768176	1,324,977.19	3,204,349.98
9,583.00	90.52	1.69	7,198.76	2,485.28	-489.48	40.223406	-104.768169	1,325,072.16	3,204,351.16
9,678.00	89.48	0.40	7,198.76	2,580.27	-487.75	40.223667	-104.768163	1,325,167.15	3,204,352.11
9,773.00	88.74	1.42	7,200.23	2,675.24	-486.24	40.223928	-104.768158	1,325,262.13	3,204,352.83
9,869.00	88.58	0.81	7,202.48	2,771.20	-484.37	40.224191	-104.768151	1,325,358.09	3,204,353.90
9,964.00	89.69	1.21	7,203.91	2,866.17	-482.70	40.224452	-104.768145	1,325,453.07	3,204,354.79
10,059.00	89.94	358.02	7,204.22	2,961.15	-483.34	40.224712	-104.768147	1,325,548.04	3,204,353.37
10,154.00	90.00	357.45	7,204.27	3,056.08	-487.09	40.224973	-104.768161	1,325,642.93	3,204,348.83
10,249.00	90.31	357.56	7,204.01	3,150.99	-491.23	40.225233	-104.768175	1,325,737.80	3,204,343.91
10,344.00	90.06	359.20	7,203.70	3,245.95	-493.91	40.225494	-104.768185	1,325,832.73	3,204,340.44
10,439.00	89.17	3.14	7,204.34	3,340.90	-491.97	40.225755	-104.768178	1,325,927.70	3,204,341.59
10,534.00	89.72	2.44	7,205.26	3,435.79	-487.35	40.226015	-104.768162	1,326,022.61	3,204,345.43
10,629.00	90.15	1.89	7,205.37	3,530.72	-483.76	40.226276	-104.768149	1,326,117.56	3,204,348.23
10,724.00	89.94	1.09	7,205.30	3,625.68	-481.29	40.226537	-104.768140	1,326,212.54	3,204,349.92
10,819.00	90.55	3.75	7,204.89	3,720.59	-477.28	40.226797	-104.768126	1,326,307.47	3,204,353.14
10,913.00	89.91	3.62	7,204.51	3,814.39	-471.24	40.227055	-104.768104	1,326,401.32	3,204,358.41
11,008.00	89.44	2.87	7,205.05	3,909.24	-465.86	40.227315	-104.768085	1,326,496.20	3,204,363.00
11,103.00	89.48	4.18	7,205.95	4,004.05	-460.02	40.227575	-104.768064	1,326,591.06	3,204,368.06
11,198.00	91.85	3.08	7,204.84	4,098.85	-454.01	40.227835	-104.768042	1,326,685.90	3,204,373.28
11,293.00	91.57	2.46	7,202.01	4,193.69	-449.42	40.228096	-104.768026	1,326,780.77	3,204,377.09

Design Report for Morning Fresh 3N-15HZ - Actual Field Surveys

Measured Depth (usft)	Inclination (°)	Azimuth (°)	Vertical Depth (usft)	Local Coordinates		Geographic Coordinates		UTM Coordinates	
				+N/-S (usft)	+E/-W (usft)	Latitude (usft)	Longitude (usft)	Northing (usft)	Easting (usft)
11,388.00	90.93	1.49	7,199.94	4,288.61	-446.14	40.228356	-104.768014	1,326,875.71	3,204,379.58
11,483.00	90.31	0.21	7,198.91	4,383.60	-444.73	40.228617	-104.768009	1,326,970.70	3,204,380.20
11,578.00	89.69	358.33	7,198.91	4,478.58	-445.94	40.228878	-104.768013	1,327,065.67	3,204,378.20
11,672.00	89.17	357.68	7,199.84	4,572.52	-449.22	40.229136	-104.768025	1,327,159.57	3,204,374.15
11,767.00	88.76	356.84	7,201.56	4,667.40	-453.76	40.229396	-104.768041	1,327,254.40	3,204,368.83
11,862.00	89.69	356.08	7,202.85	4,762.20	-459.62	40.229656	-104.768062	1,327,349.15	3,204,362.18
11,957.00	89.23	356.23	7,203.74	4,856.99	-465.99	40.229916	-104.768085	1,327,443.87	3,204,355.03
12,052.00	90.65	356.72	7,203.84	4,951.80	-471.83	40.230177	-104.768106	1,327,538.64	3,204,348.40
12,146.00	90.28	356.65	7,203.08	5,045.64	-477.27	40.230434	-104.768126	1,327,632.42	3,204,342.19
12,241.00	89.54	355.76	7,203.23	5,140.43	-483.56	40.230694	-104.768148	1,327,727.15	3,204,335.12
12,272.00	89.26	355.72	7,203.55	5,171.35	-485.86	40.230779	-104.768156	1,327,758.05	3,204,332.56
12,318.00	89.26	355.72	7,204.15	5,217.21	-489.29	40.230905	-104.768169	1,327,803.88	3,204,328.75

Design Annotations

Measured Depth (usft)	Vertical Depth (usft)	Local Coordinates		Comment
		+N/-S (usft)	+E/-W (usft)	
902.00	901.97	4.91	2.47	Tie-On to Gyro Surveys @ 902.00ft
1,099.00	1,098.97	5.38	3.34	First MWD Survey @ 1099.00ft
12,272.00	7,203.55	5,171.35	-485.86	Final MWD Survey @ 12272.00ft
12,318.00	7,204.15	5,217.21	-489.29	Str Line Proj to Bit @ 12318' MD :: 7204.15' TVD

Vertical Section Information

Angle Type	Target	Azimuth (°)	Origin Type	Origin		Start TVD (usft)
				+N/_S (usft)	+E/-W (usft)	
User	No Target (Freehand)	0.00	Slot	0.00	0.00	0.00

Survey tool program

From (usft)	To (usft)	Survey/Plan	Survey Tool
13.00	902.00	MS Energy Surveys	NS-GYRO-MS
1,099.00	7,586.00	MWD Vertical/Build Surveys	MWD+IFR1+SC
7,681.00	12,272.00	MWD Lateral Surveys	MWD+IFR1+SC

Design Report for Morning Fresh 3N-15HZ - Actual Field Surveys

Casing Details

Measured Depth (usft)	Vertical Depth (usft)	Name	Casing Diameter (")	Hole Diameter (")
996.60	996.57	9 5/8" Casing Set @ 996.6' MD :: 996.57' TVD	9-5/8	13-1/2
7,551.30	7,198.33	7" Casing Set @ 7551.3' MD :: 7198.33' TVD	7	8-3/4

Design Targets

Shape	Target Name	TVD ()	Northing ()	Easting ()	+N/-S	+E/-W	Created	Updated
-------	-------------	------------	-----------------	----------------	-------	-------	---------	---------

Directional Difficulty Index

Average Dogleg over Survey:	1.69 °/100usft	Maximum Dogleg over Survey:	13.53 °/100usft at 7,404.00 usft
Net Tortousity applicable to Plans:	0.56 °/100usft	Directional Difficulty Index:	6.317

Audit Info

North Reference Sheet for Sec. 22-T3N-R66W - Morning Fresh 3N-15HZ - Plan B

All data is in US Feet unless otherwise stated. Directions and Coordinates are relative to True North Reference.

Vertical Depths are relative to RKB=13' @ 4897.00usft (Ensign 132). Northing and Easting are relative to Morning Fresh 3N-15HZ

Coordinate System is US State Plane 1983, Colorado Northern Zone using datum North American Datum 1983, ellipsoid GRS 1980

Projection method is Lambert Conformal Conic (2 parallel)

Central Meridian is -105.500000°, Longitude Origin:0.000000°, Latitude Origin:40.783333°

False Easting: 3,000,000.00usft, False Northing: 1,000,000.00usft, Scale Reduction: 0.99995702

Grid Coordinates of Well: 1,322,591.12 usft N, 3,204,861.16 usft E

Geographical Coordinates of Well: 40° 12' 59.70" N, 104° 45' 59.10" W

Grid Convergence at Surface is: 0.47°

Based upon Minimum Curvature type calculations, at a Measured Depth of 12,318.00usft

the Bottom Hole Displacement is 5,240.11usft in the Direction of 354.64° (True).

Magnetic Convergence at surface is: -8.02° (30 May 2014, , BGGM2013)

