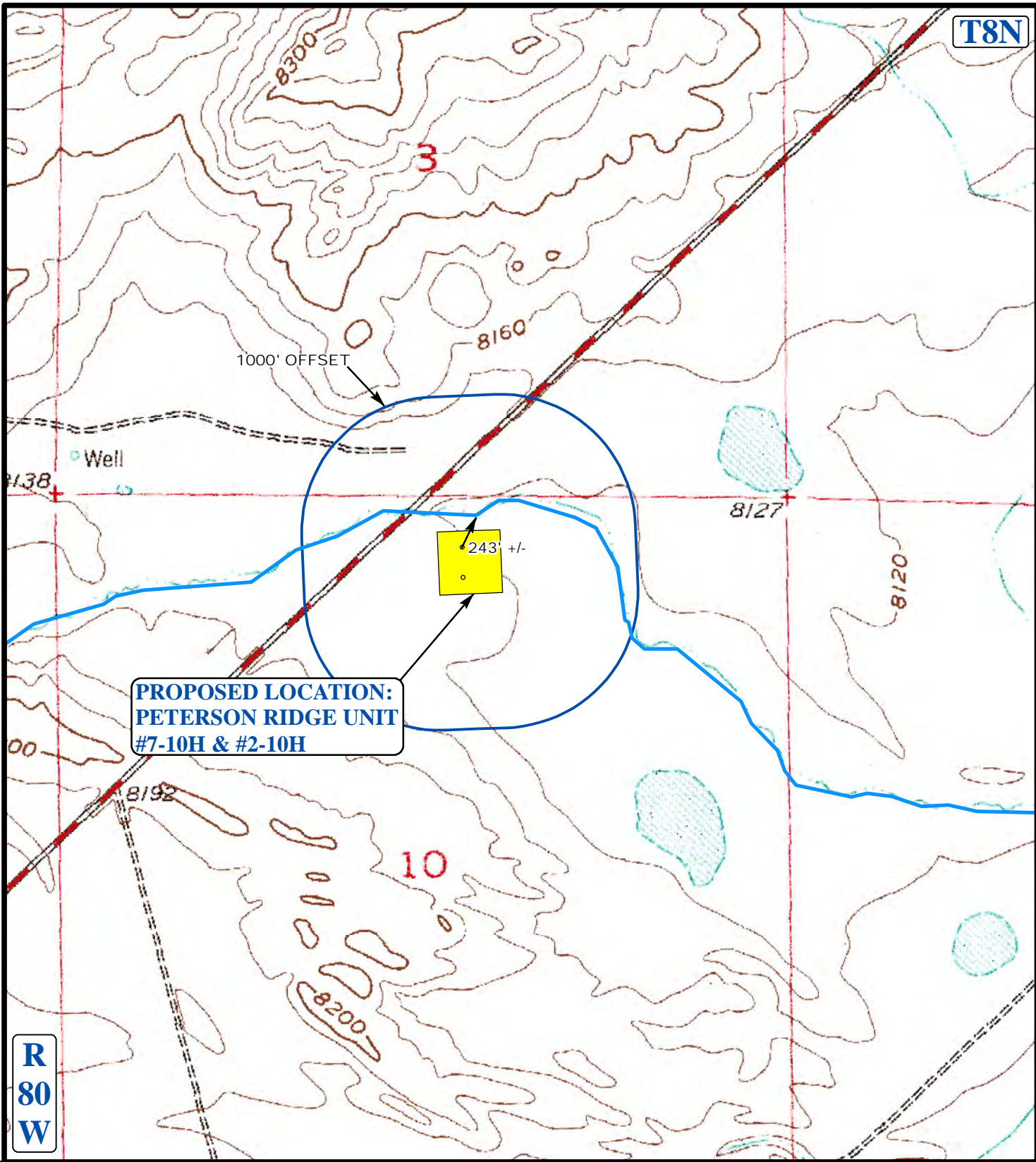


T8N



**PROPOSED LOCATION:
PETERSON RIDGE UNIT
#7-10H & #2-10H**

R
80
W

LEGEND:

- EXISTING WATER
- 1000' OFFSET BOUNDRY

EE3 LLC.

**PETERSON RIDGE UNIT #7-10H & #2-10H
SECTION 10, T8N, R80W, 6th P.M.
NW 1/4 NE 1/4**



Uintah Engineering & Land Surveying
85 South 200 East Vernal, Utah 84078
(435) 789-1017 * FAX (435) 789-1813



**HYDROLOGY
MAP**
SCALE: 1" = 1000' DRAWN BY: T.T.

10 MONTH	22 DAY	13 YEAR
REV: 05-28-14 T.W.		

