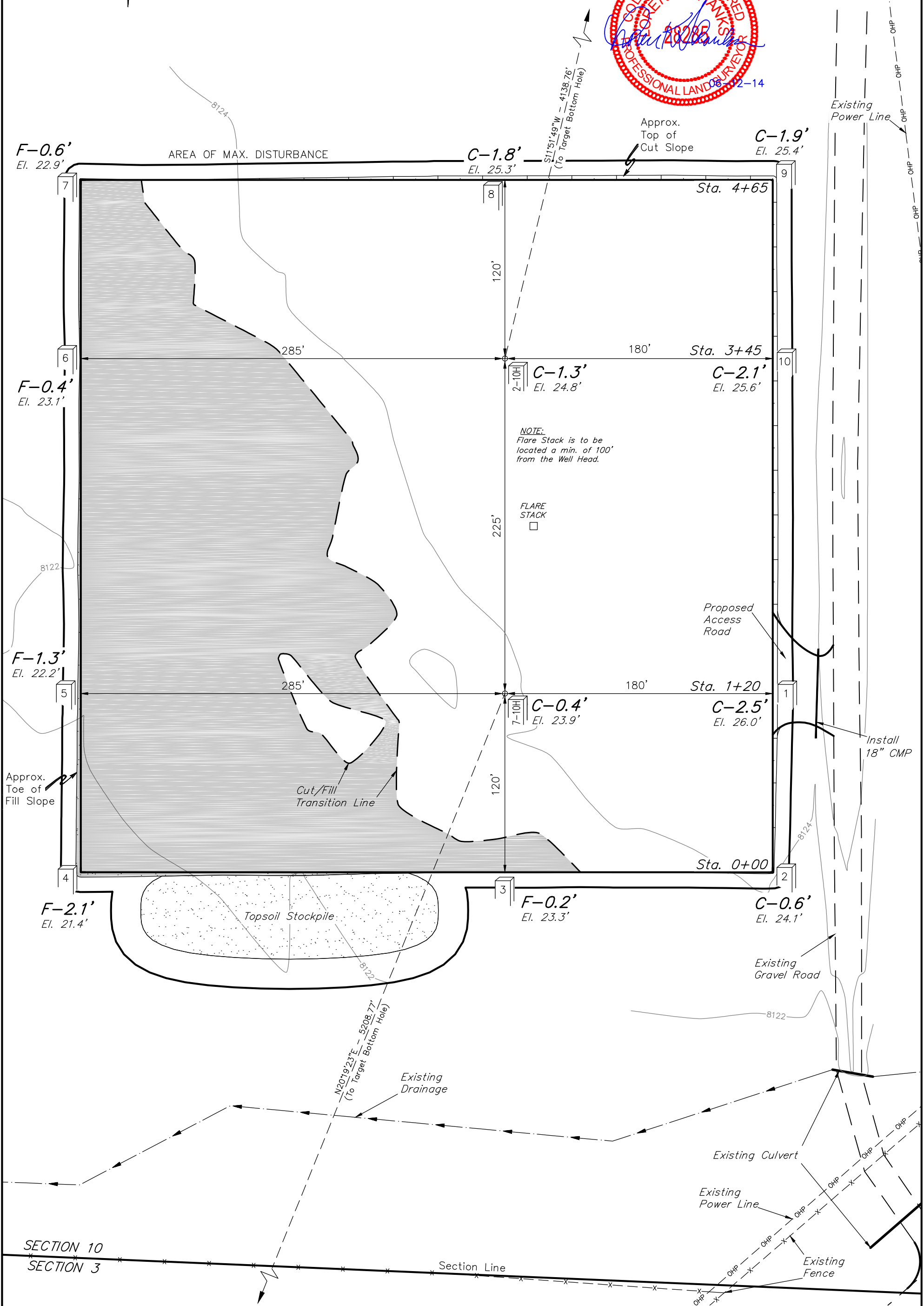


EE3 LLC.
CONSTRUCTION LAYOUT FOR
PETERSON RIDGE UNIT #7-10H & #2-10H
SECTION 10, T8N, R80W, 6th P.M.
NW 1/4 NE 1/4

FIGURE #1
SCALE: 1" = 60'
DATE: 10-28-13
DRAWN BY: J.S.
REV: 06-05-14 J.P.



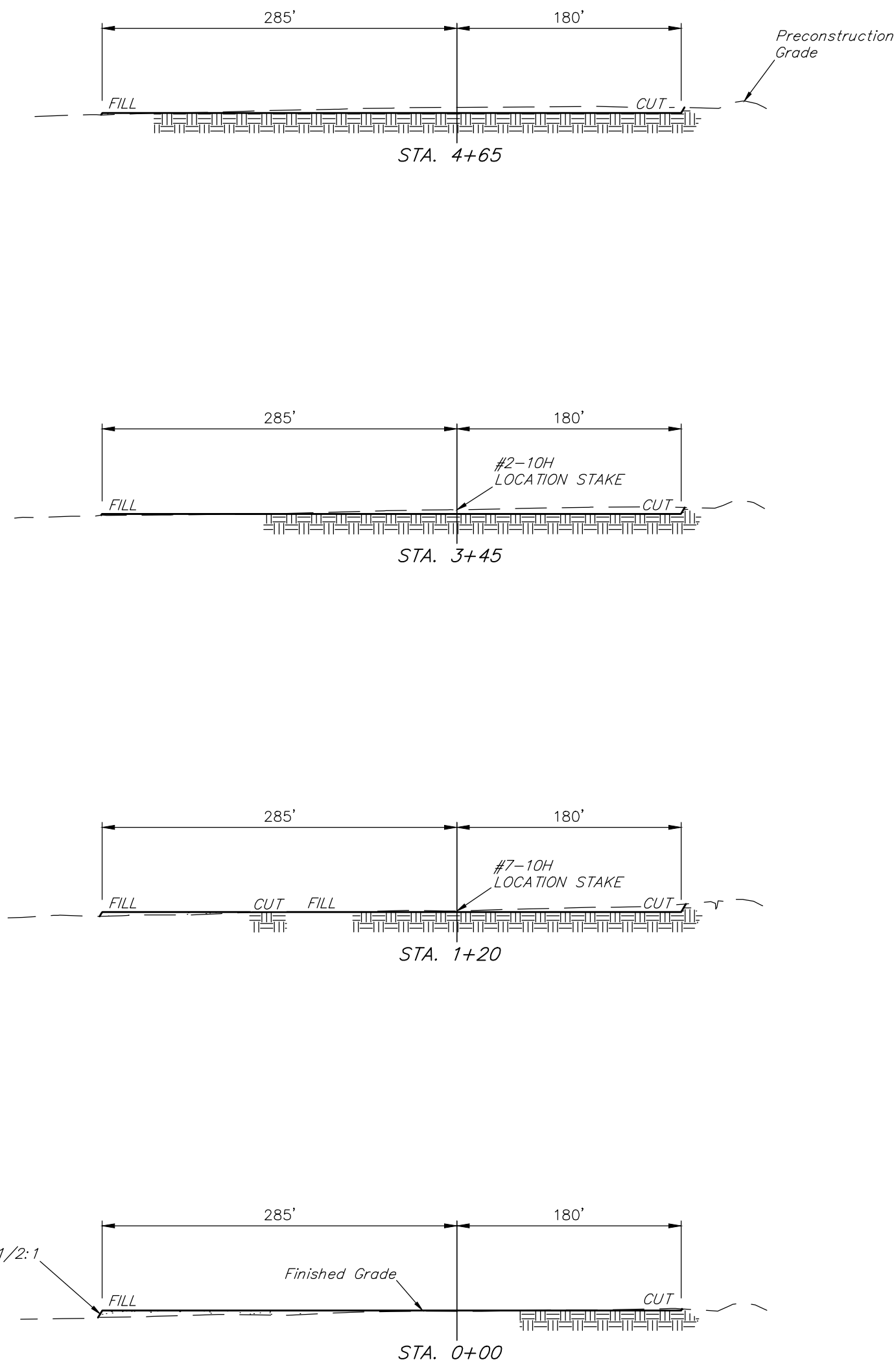
Elev. Ungraded Ground At #7-10H Loc. Stake = 8123.9'
FINISHED GRADE ELEV. AT #7-10H LOC. STAKE = 8123.5'

UINTAH ENGINEERING & LAND SURVEYING
85 So. 200 East * Vernal, Utah 84078 * (435) 789-1017

1" = 40'
X-Section
Scale
1" = 100'
DATE: 10-28-13
DRAWN BY: J.S.
REV: 06-05-14 J.P.

EE3 LLC.
CONSTRUCTION LAYOUT CROSS SECTIONS FOR
PETERSON RIDGE UNIT #7-10H & #2-10H
SECTION 10, T8N, R80W, 6th P.M.
NW 1/4 NE 1/4

FIGURE #2



NOTE:
Topsoil should not be
Stripped Below Finished
Grade on Substructure Area.

* NOTE:
FILL QUANTITY INCLUDES
5% FOR COMPACTION

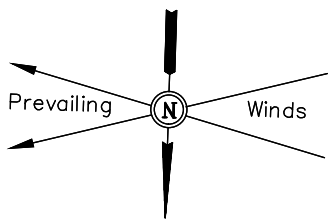
APPROXIMATE YARDAGES

(6") Topsoil Stripping = 4,070 Cu. Yds.
Remaining Location = 3,760 Cu. Yds.
TOTAL CUT = 7,830 CU. YDS.
FILL = 3,760 CU. YDS.

EXCESS MATERIAL = 4,070 Cu. Yds.
Topsoil = 4,070 Cu. Yds.
EXCESS UNBALANCE = 0 Cu. Yds.
(After Interim Rehabilitation)

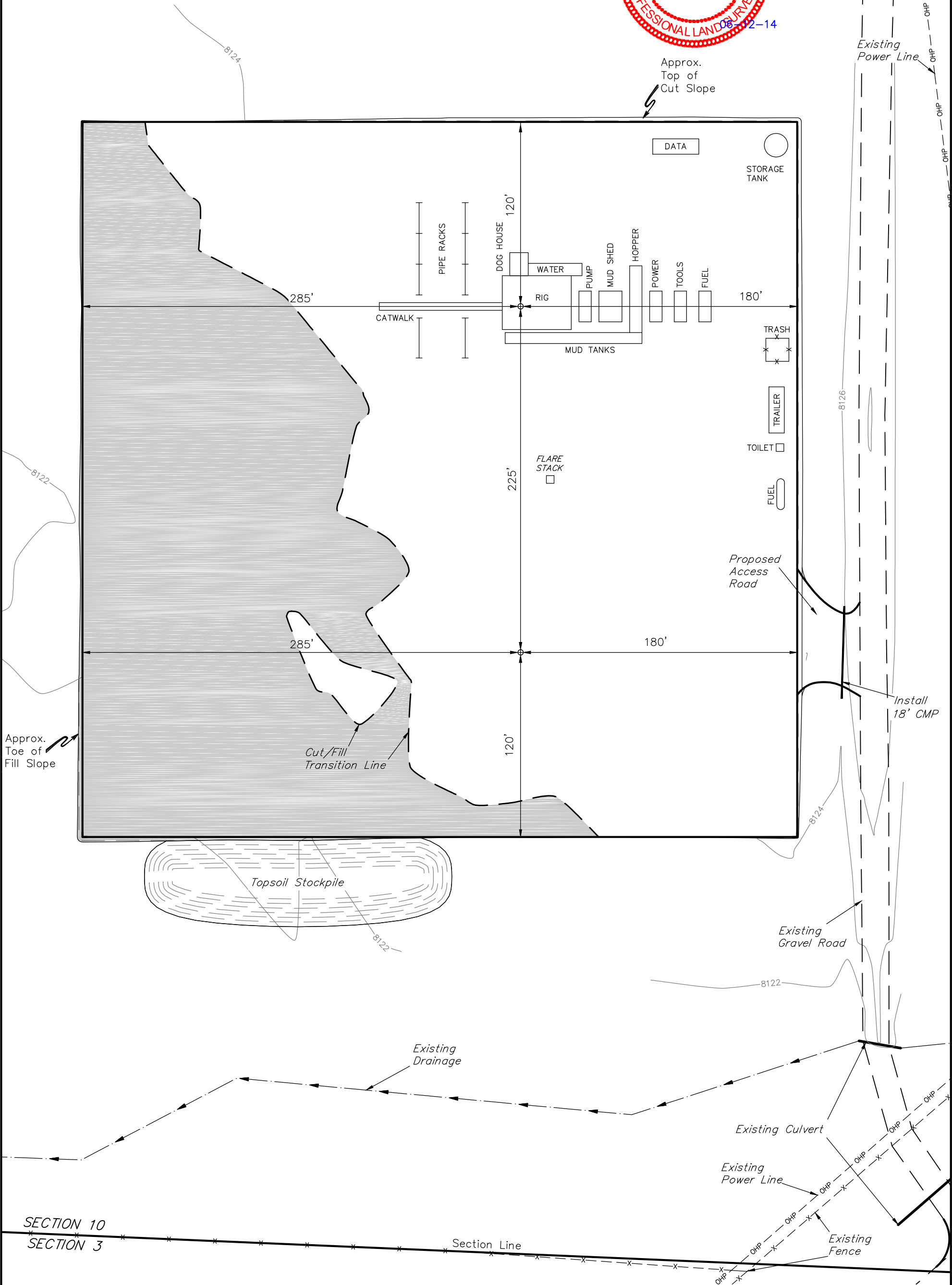
APPROXIMATE ACREAGE
WELL SITE DISTURBANCE = ± 5.814 ACRES
ACCESS ROAD DISTURBANCE = ± 0.315 ACRES
TOTAL = ± 6.129 ACRES

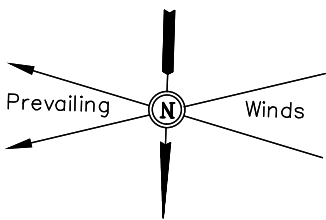
UINTAH ENGINEERING & LAND SURVEYING
85 So. 200 East * Vernal, Utah 84078 * (435) 789-1017



EE3 LLC.
TYPICAL RIG LAYOUT FOR
PETERSON RIDGE UNIT #7-10H & #2-10H
SECTION 10, T8N, R80W, 6th P.M.
NW 1/4 NE 1/4

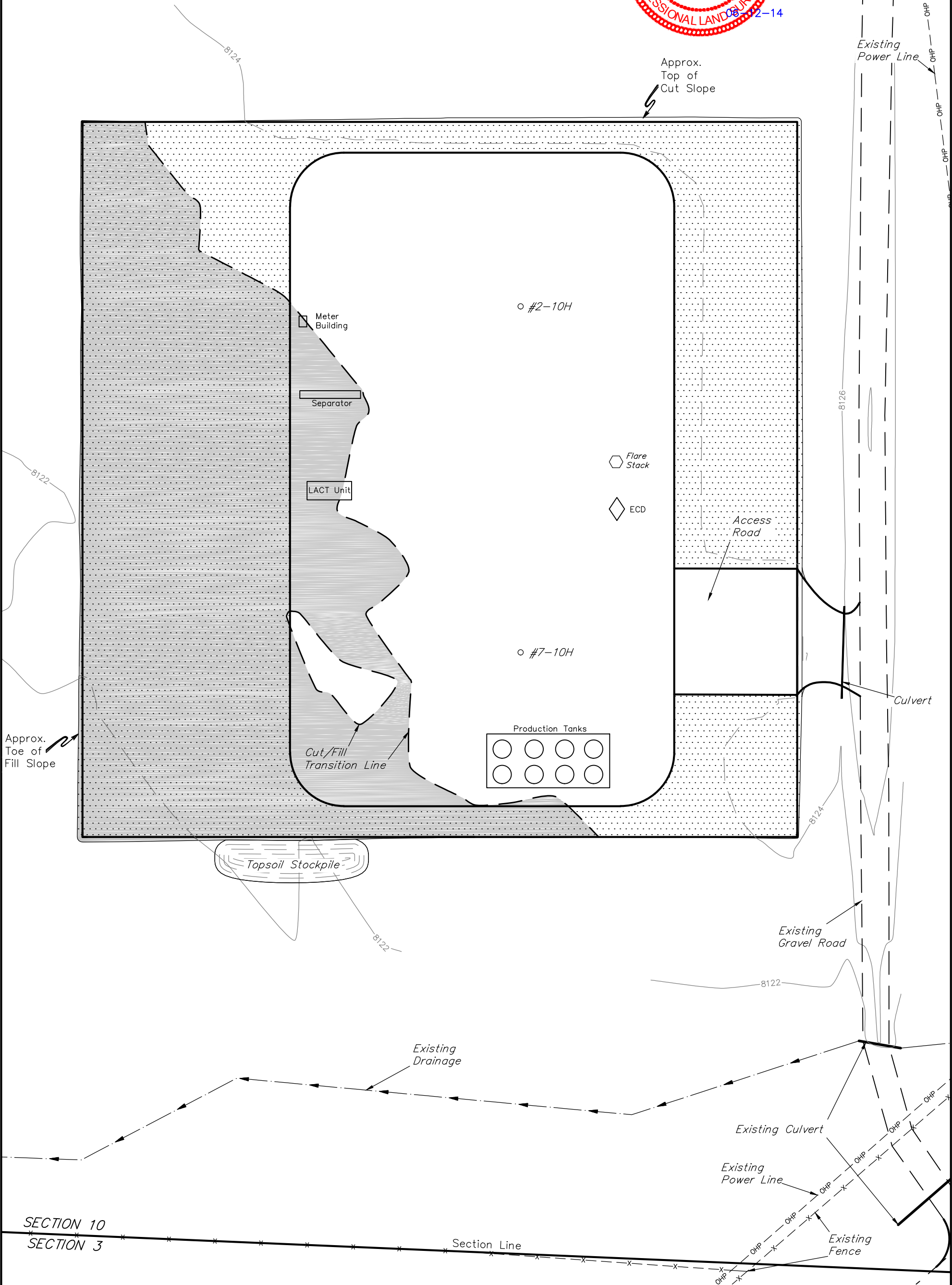
FIGURE #3A
SCALE: 1" = 60'
DATE: 10-28-13
DRAWN BY: J.S.
REV: 06-05-14 J.P.





EE3 LLC.
RECLAMATION DIAGRAM FOR
PETERSON RIDGE UNIT #7-10H & #2-10H
SECTION 10, T8N, R80W, 6th P.M.
NW 1/4 NE 1/4

FIGURE #4
SCALE: 1" = 60'
DATE: 10-28-13
DRAWN BY: J.S.
REV: 06-05-14 J.P.



RECLAIMED AREA

APPROXIMATE ACREAGE
UN-RECLAIMED = ± 2.565 ACRES

UINTAH ENGINEERING & LAND SURVEYING
85 So. 200 East * Vernal, Utah 84078 * (435) 789-1017