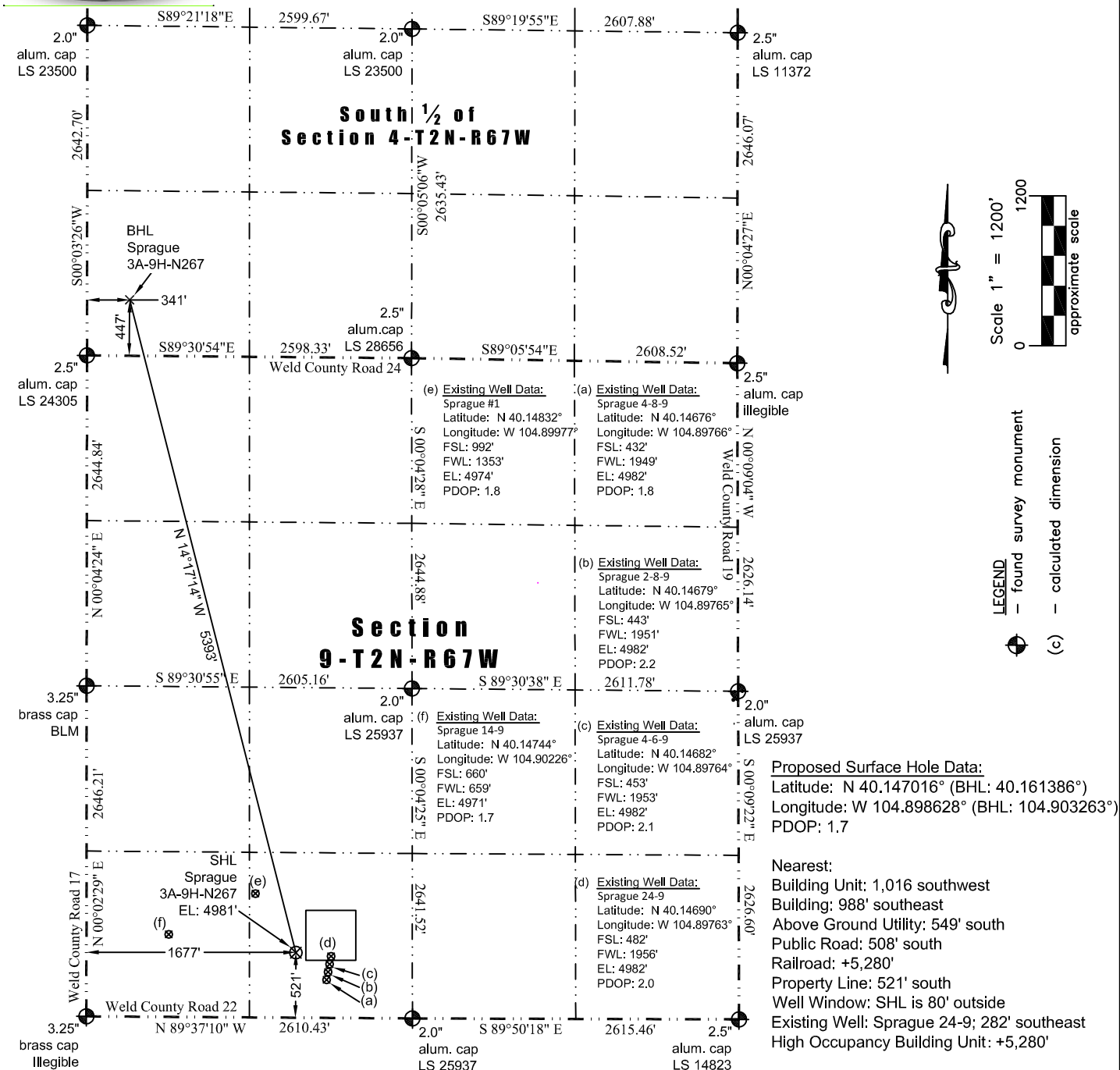




# WELL LOCATION CERTIFICATE

THIS MAP DOES NOT REPRESENT A BOUNDARY SURVEY

Washburn Land Surveying  
www.WashburnSurveying.com  
970-232-9645



In accordance with a request from Jay Knutson of EnCana Oil & Gas (USA) Inc., Washburn Land Surveying, LLC has determined the location of the **Sprague 3A-9H-N267** well site to be SHL: 521' FSL and 1677' FWL, (BHL: 447' FSL and 341' FWL), as measured at ninety (90) degrees from the section lines of Sections 4 and 9, Township 2 North, Range 67 West of the 6th Principal Meridian, Weld County Colorado.

#### Notes:

- 1) Bearings and distances based on NAD 83 Colorado North State Plane Coordinates using RTK GPS observations taken 9/26/2013 by operator John Rice.
- 2) Conversion factor to ground (1.000271871).
- 3) Elevations based on NAVD 88 GPS heights and Geoid 2003 corrections.
- 4) See Location Drawing for visible improvements within 500 feet of pad site.
- 5) The surface use is cultivated field.
- 6) Updated BHL 7-7-14

I hereby certify that this Well Location Certificate was prepared by me or under my direct supervision on 7/7/2014 for and on behalf of EnCana Oil & Gas (USA) Inc. That it is not a Land Survey Plat or an Improvement Survey Plat and that it is not to be relied upon for establishment of fences, buildings, or other future improvement lines.

John Robert McGehee, LS#38219  
Well: Sprague 3A-9H-N267 WLC