



**CEMENT EVALUATION LOG
CBL TOOLS
FINAL PRINT**

Company XTO ENERGY
Well SMITH 01H
Field IGNACIO BLANCO
County LA PLATA
State COLORADO

Location: SEC 02 TWP 32N RGE 07W
 237 FSL & 1118 FWL
API#: 05-067-09900

Other Services
 Permanent Datum G.L. Elevation 6315'
 Log Measured From RRB 12' D.F. 6330'
 Drilling Measured From RRB Elevation 6315'

Date	08/2014
Run Number	ONE
Depth Drifter	6508'
Depth Logger	2170'
Bottom Logged Interval	2170'
Top Log Interval	SORT
Open Hole Size	NA
Type Fluid	H2O
Density / Viscosity	8.518.6
Max. Recorded Temp.	NA
Estimated Cement Top	NA
Time Well Ready	1130
Time Logger on Bottom	1215
Equipment Number	DS/PRO3
Location	NA
Recorded By	IGITTIN
Witnessed By	M.R. DAN THOMPSON

Borehole Record		Tubing Record					
Run Number	Bit	From	To	Size	Weight	From	To

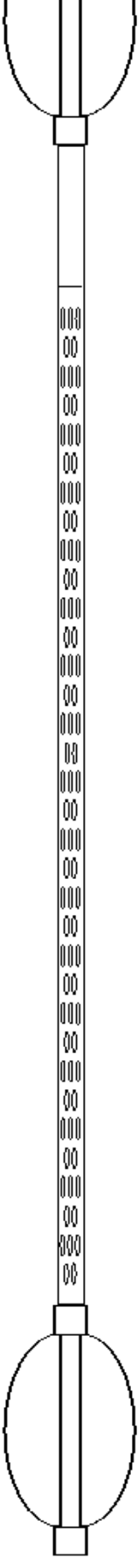
Casing Record		Weight		Top		Bottom	
Surface String	Size	Wgt	HT	HT	HT	HT	HT
Surface String	9 3/8	36#	1-55	SORT	268'		
Prod. String	7	23#	1-55	SORT	2897.9'		
Production String	4 1/2	11.50#	1-55	SORT	6101.0'		
Liner	4 1/2	11.60#	1-55	SORT	6466.0'		

<<< Fold Here >>>

All interpretations are opinions based on inferences from electrical or other measurements and we cannot and do not guarantee the accuracy or correctness of any interpretation, and we shall not, except in the case of gross or willful negligence on our part, be liable or responsible for any loss, costs, damages, or expenses incurred or sustained by anyone resulting from any interpretation made by any of our officers, agents or employees. These interpretations are also subject to our general terms and conditions set out in our current Price Schedule.

Comments

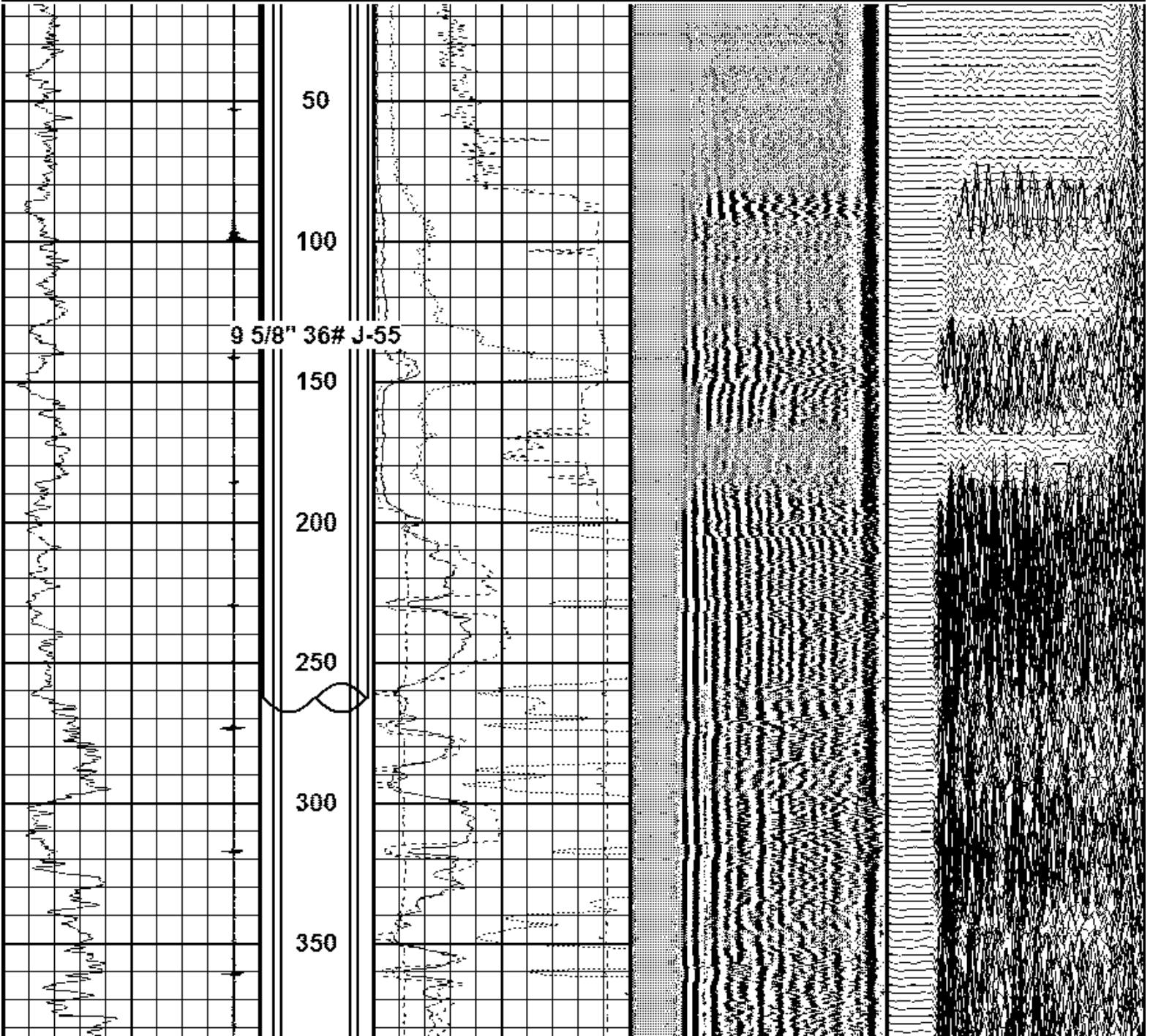
Sensor	Offset (ft)	Schematic	Description	Length (ft)	O.D. (in)	Weight (lb)

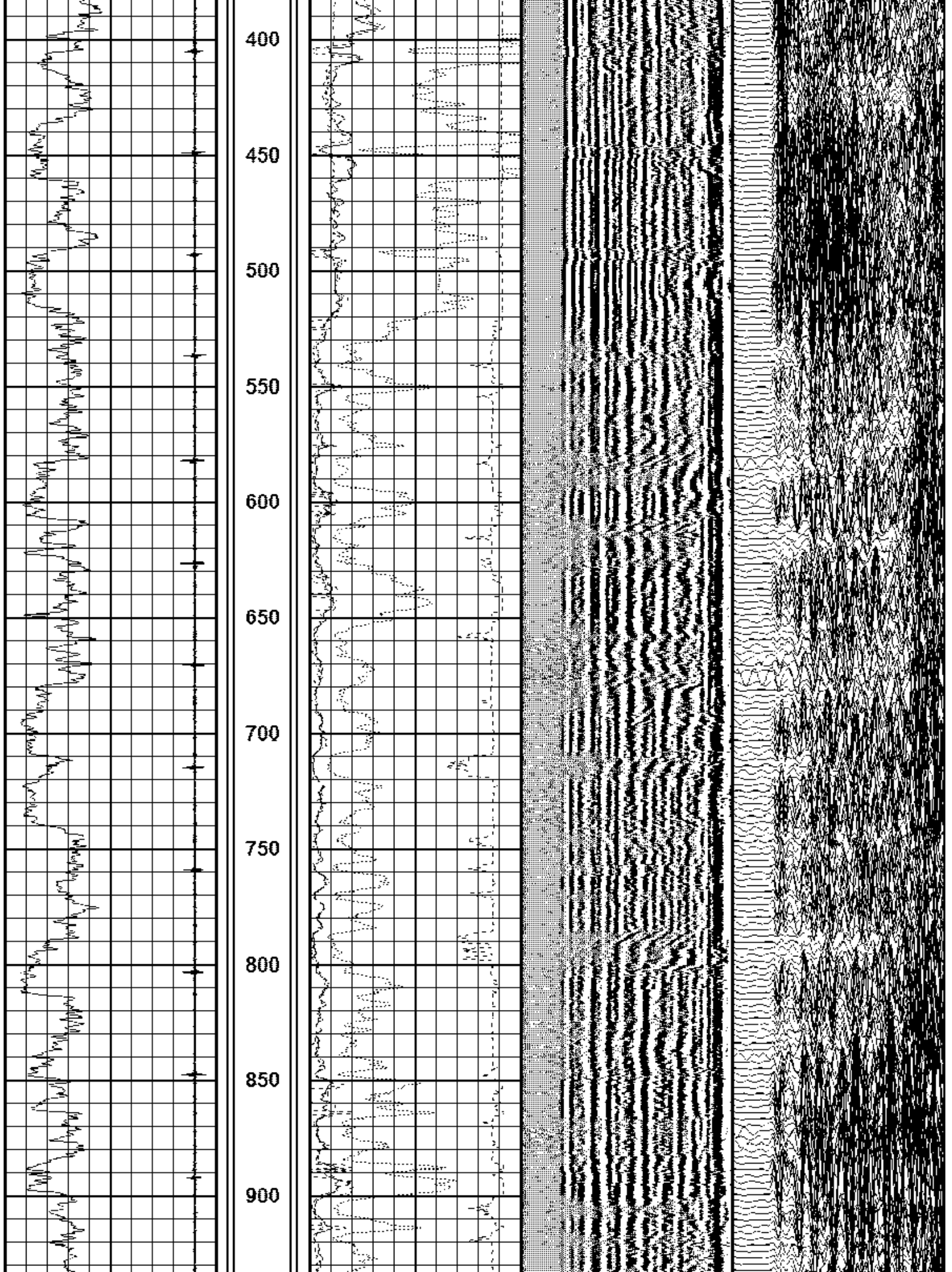
			PRB169S Probe 1 11/16" Centralizer	2.42	1.69	10.00
CCL	12.02					
GR	8.62		Probe169 (PRO3) Probe 1 11/16" Dual Receiver / Gamma Ray / CCL	11.33	1.69	55.00
WVF3FT	8.83					
WVF5FT	5.83					
WVFSYNC	2.42		PRB169S Probe 1 11/16" Centralizer	2.42	1.69	10.00

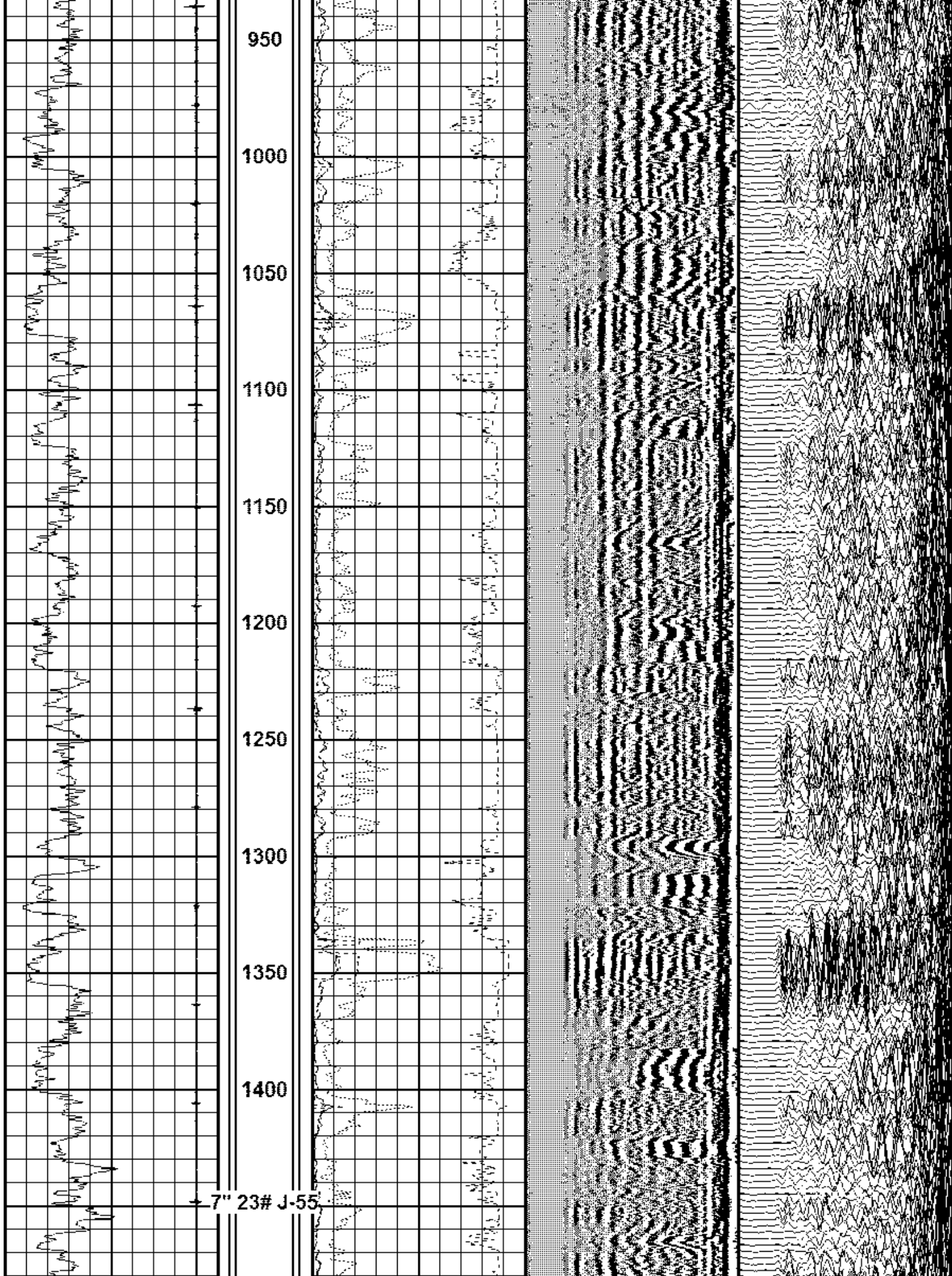
Dataset: xtosmith1hcbl.db: field/wellsmith1h/run1/pass4
 Total length: 16.17 ft
 Total weight: 75.00 lb
 O.D.: 1.69 in

Database File xtosmith1hcbl.db
Dataset Pathname wellsmith1h/run1/pass4
Presentation Format chl4inplo

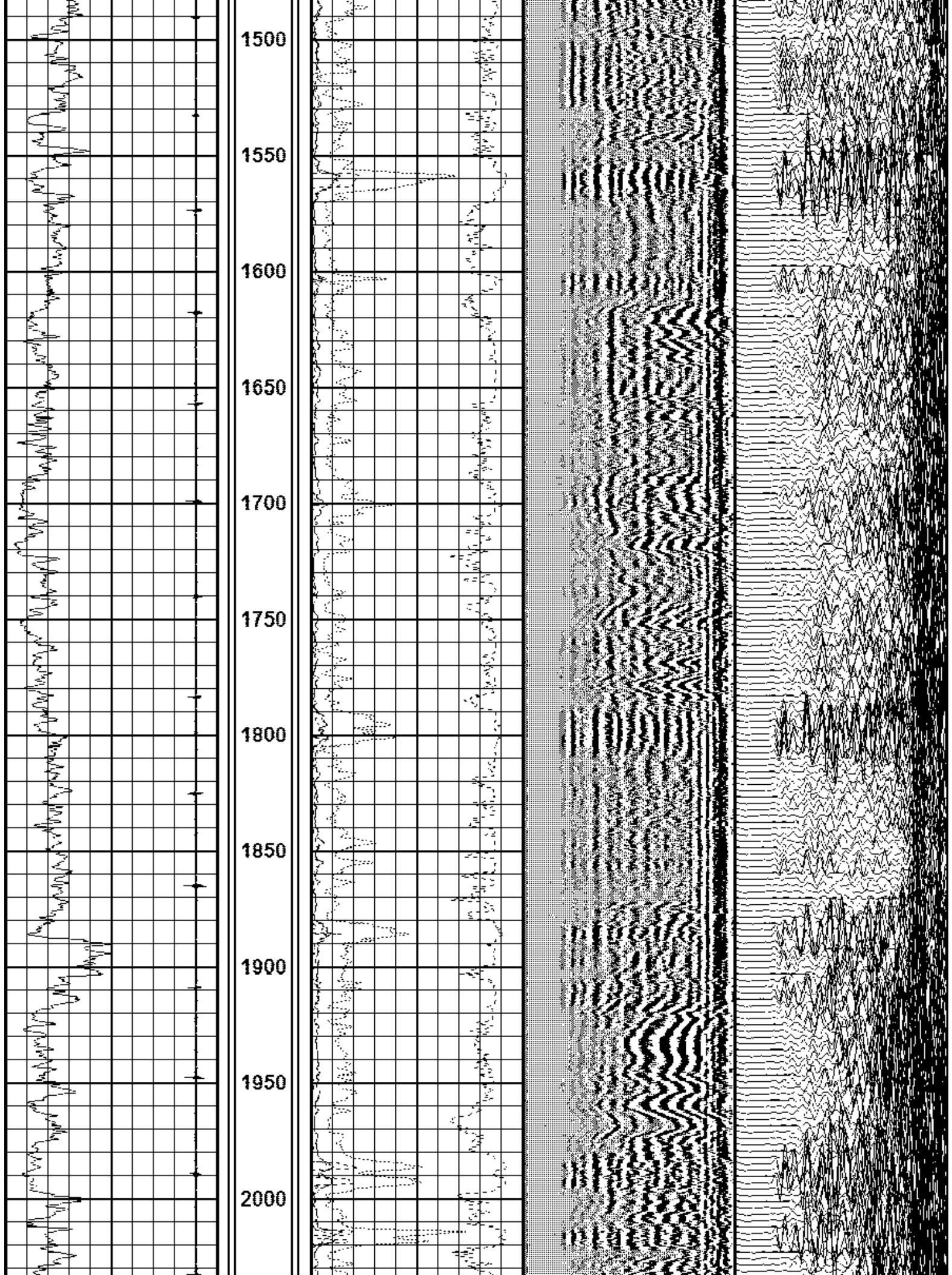
9	Collar Locator -1		Amplitude X5	200	VDL	1200	200	WVF5FT	1200
0	Gamma Ray 200	0	(mV)	24					
			3' Amplitude						
		0	(mV)	120					
			TT3FT						
		1200	(usec)	200					
			Travel Time X10						
		300	(usec)	200					
			5' Amplitude						
		0	(mV)	120					

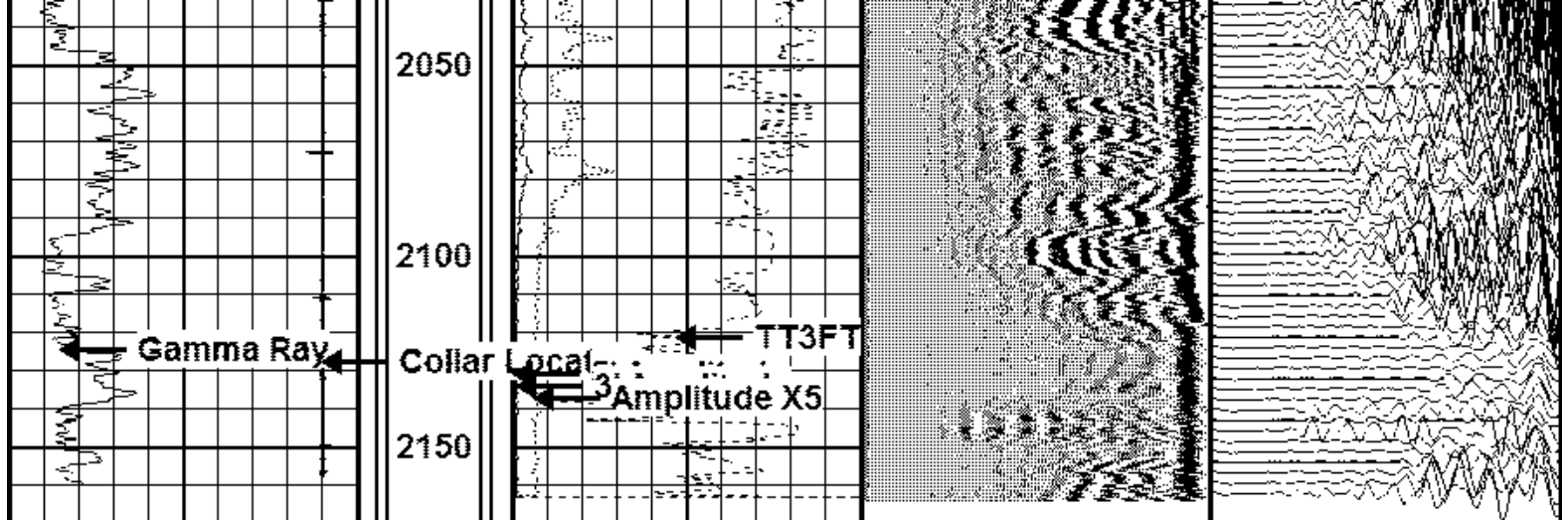






7" 23# J-55

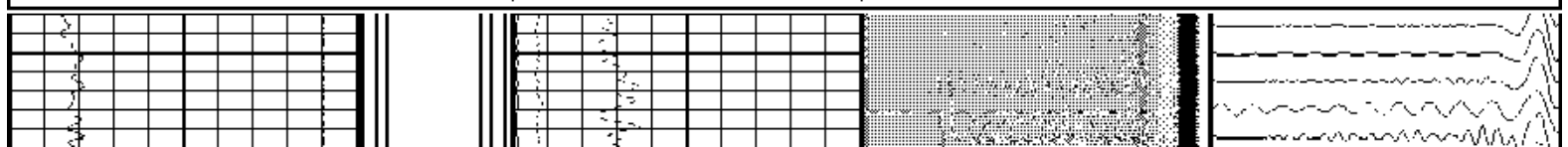


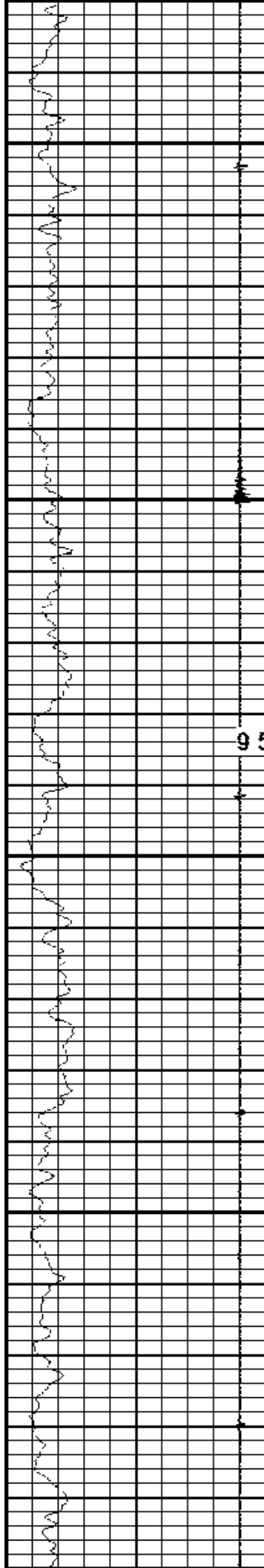


9	Collar Locator -1	Amplitude X5	200	VDL	1200	200	WVF5FT	1200
0	Gamma Ray 200	0 (mV) 24						
		3' Amplitude						
		0 (mV) 120						
		TT3FT						
		1200 (usec) 200						
		Travel Time X10						
		300 (usec) 200						
		5' Amplitude						
		0 (mV) 120						

Database File xtosmith1hcbl.db
 Dataset Pathname wellsmith1h/run1/pass4
 Presentation Format cbl4inplo
 Dataset Creation Fri Aug 08 12:29:29 2014
 Charted by Depth in Feet scaled 1:240

9	Collar Locator -1	Amplitude X5	200	VDL	1200	200	WVF5FT	1200
0	Gamma Ray 200	0 (mV) 24						
		3' Amplitude						
		0 (mV) 120						
		TT3FT						
		1200 (usec) 200						
		Travel Time X10						
		300 (usec) 200						
		5' Amplitude						
		0 (mV) 120						





50

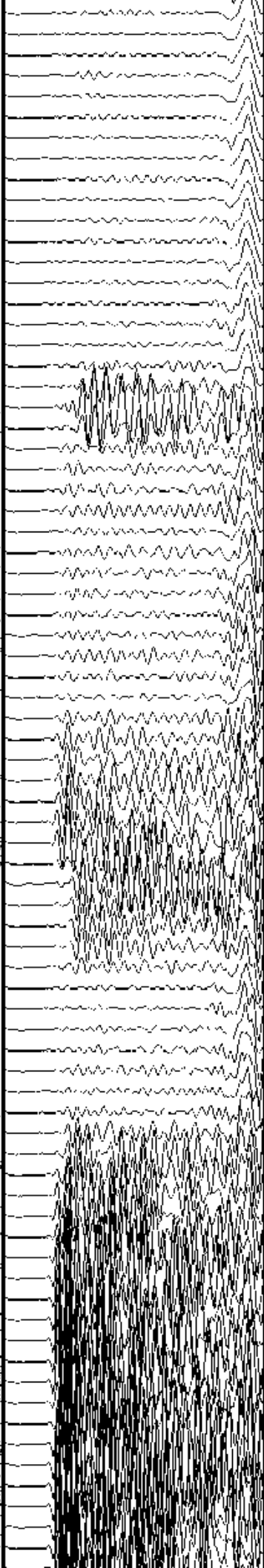
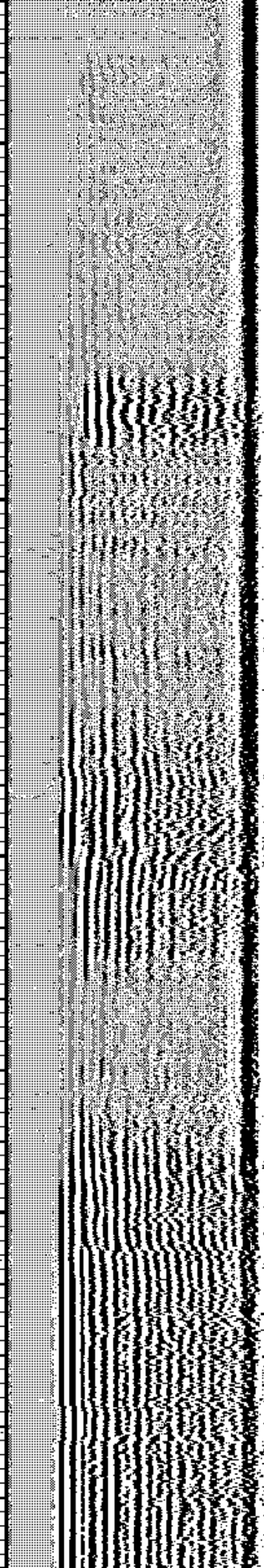
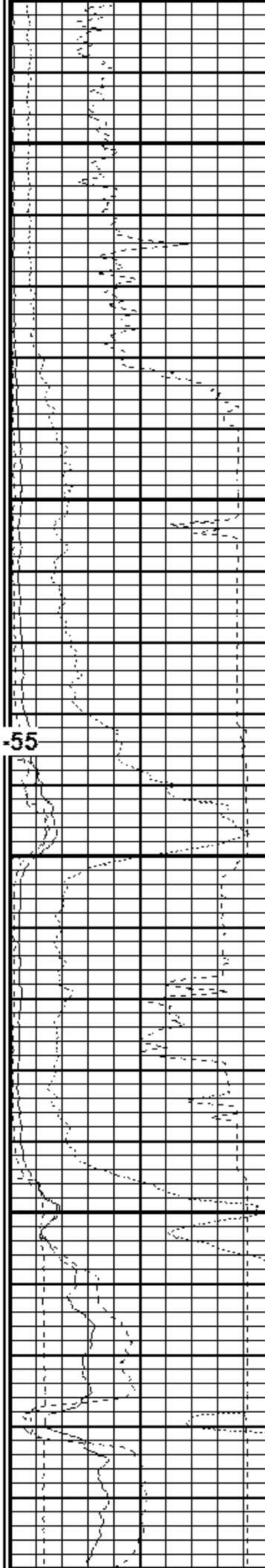
100

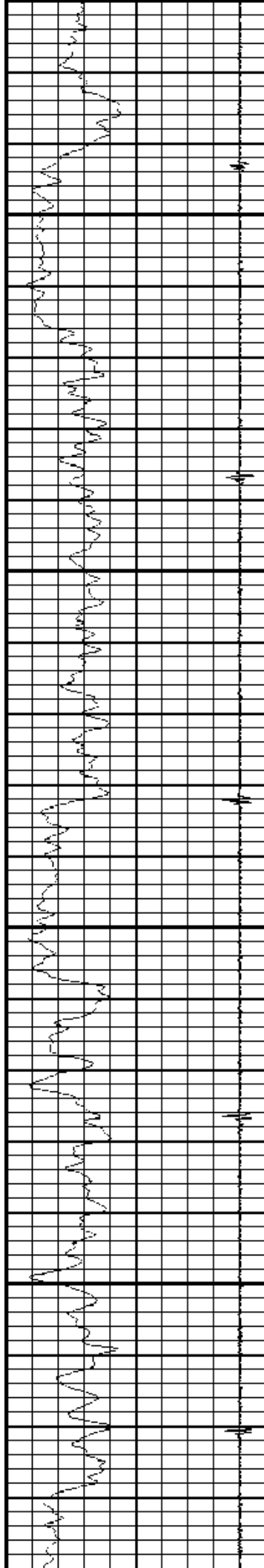
9 5/8" 36# J-55

150

200

250



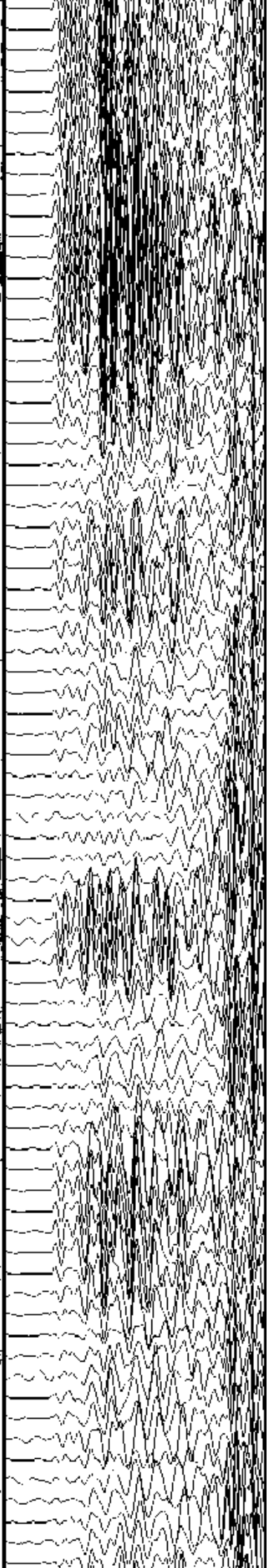
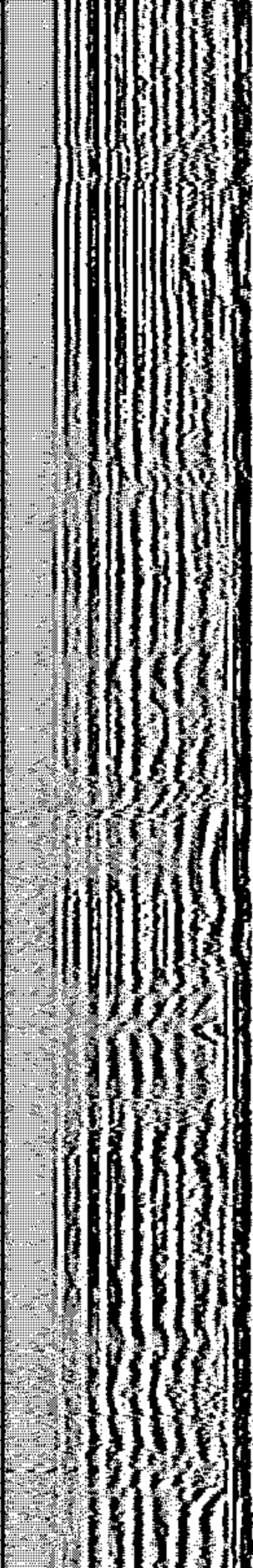
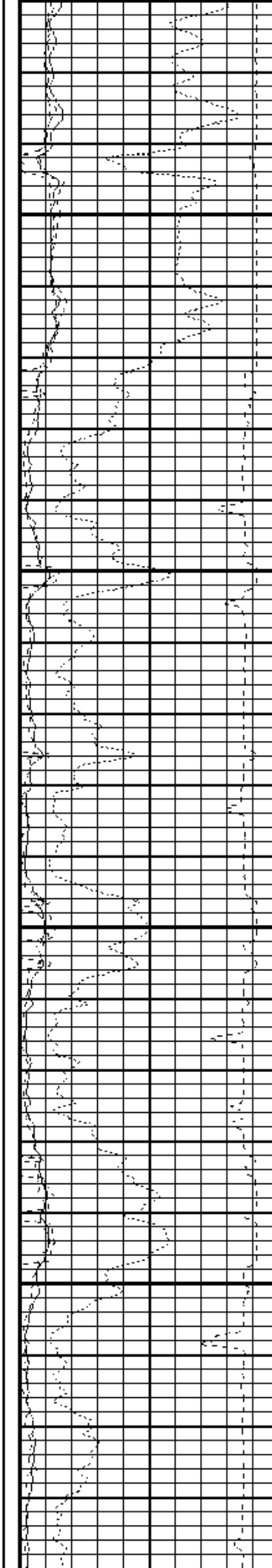


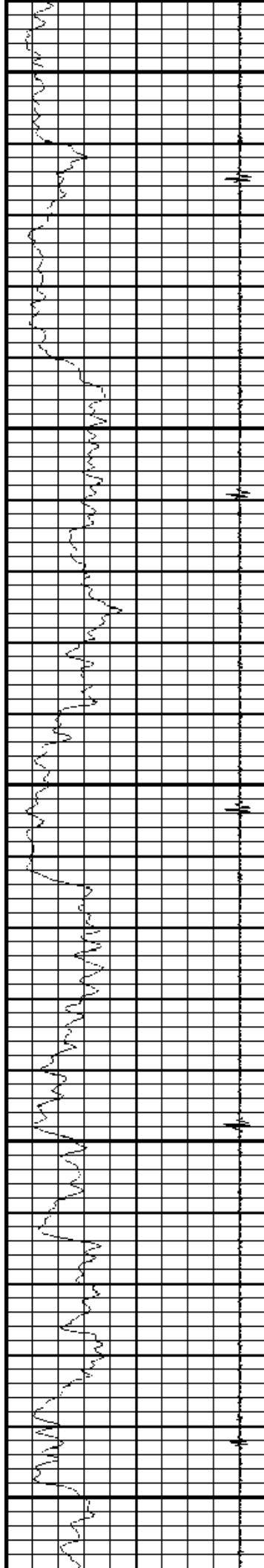
500

550

600

650





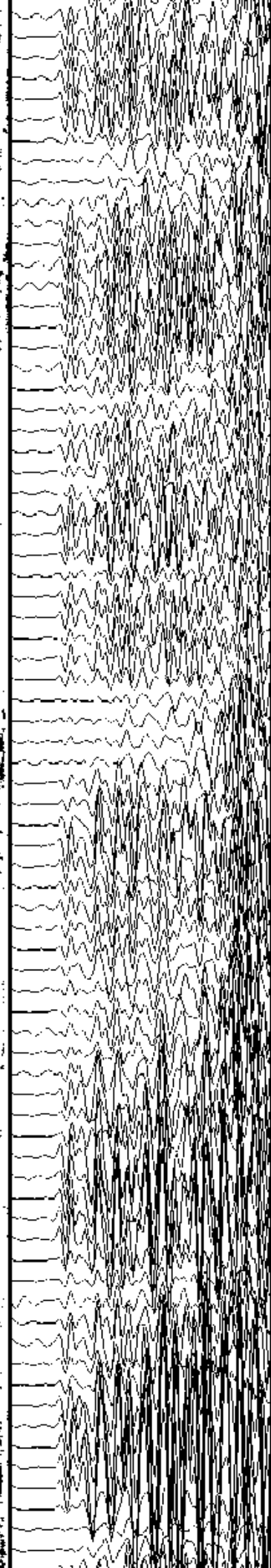
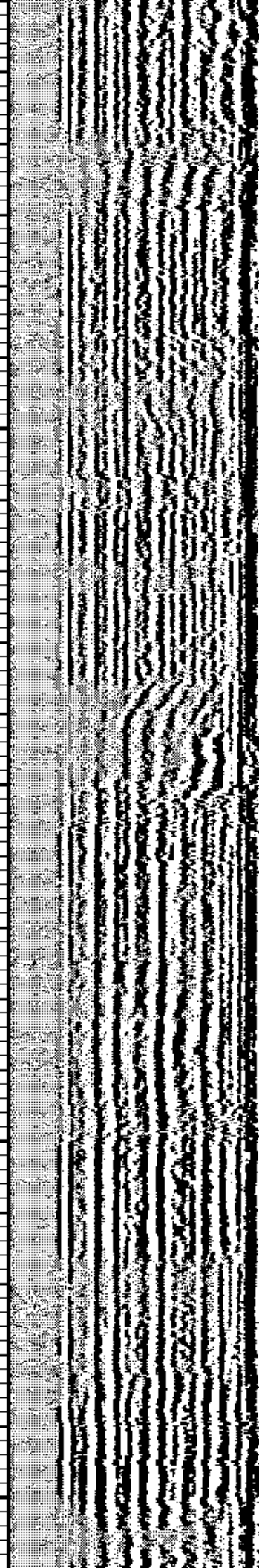
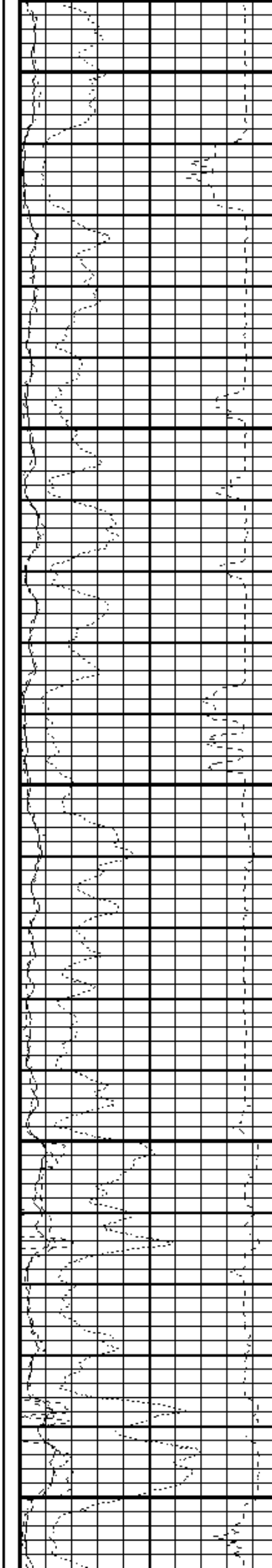
700

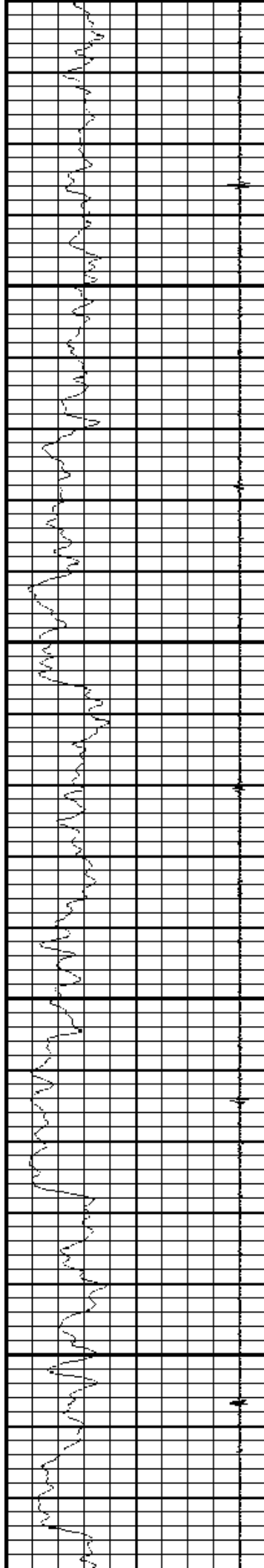
750

800

850

900



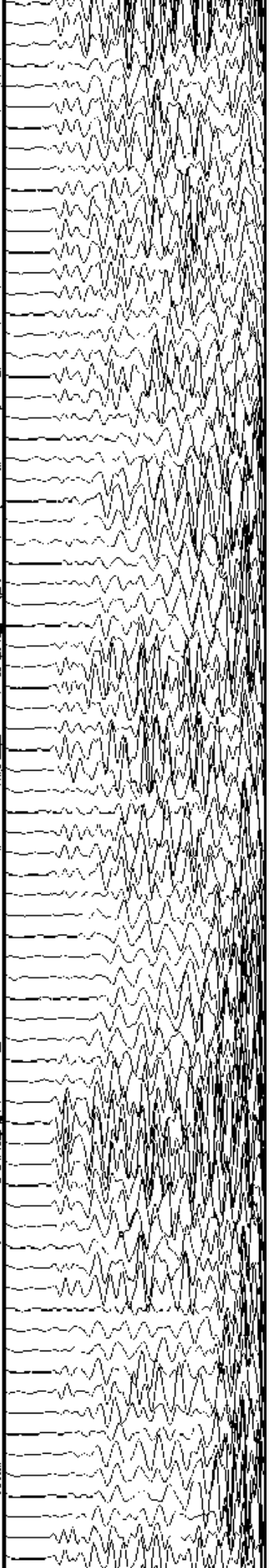
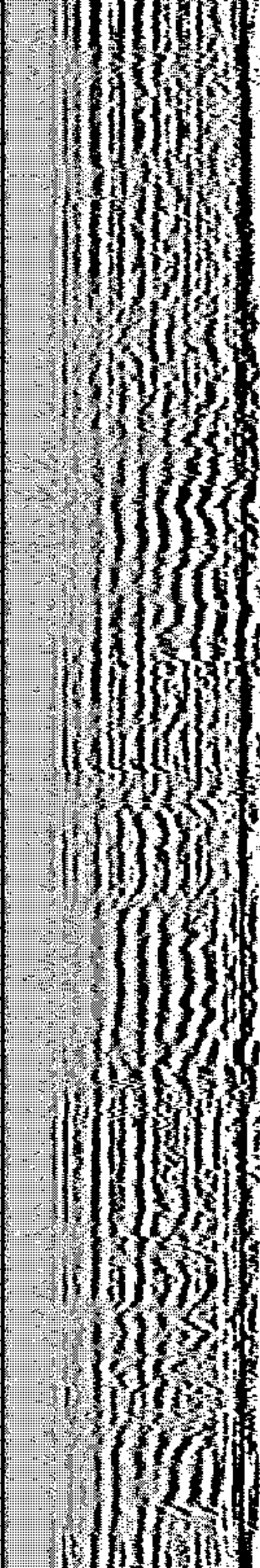
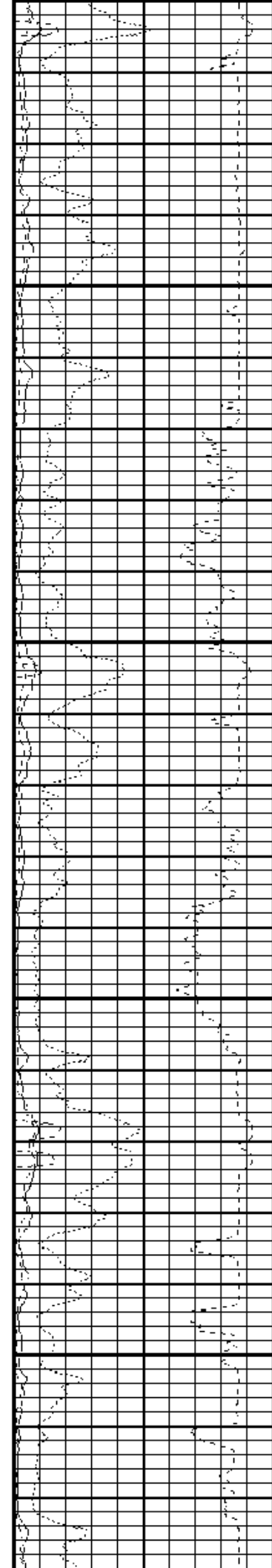


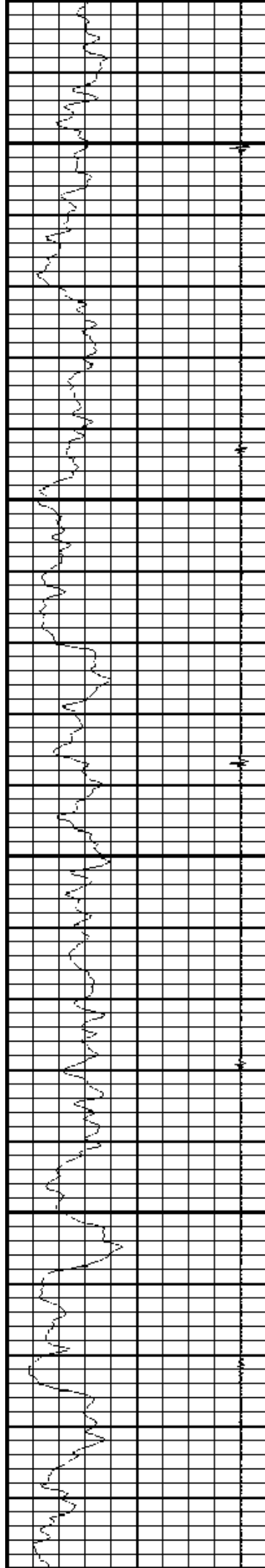
950

1000

1050

1100





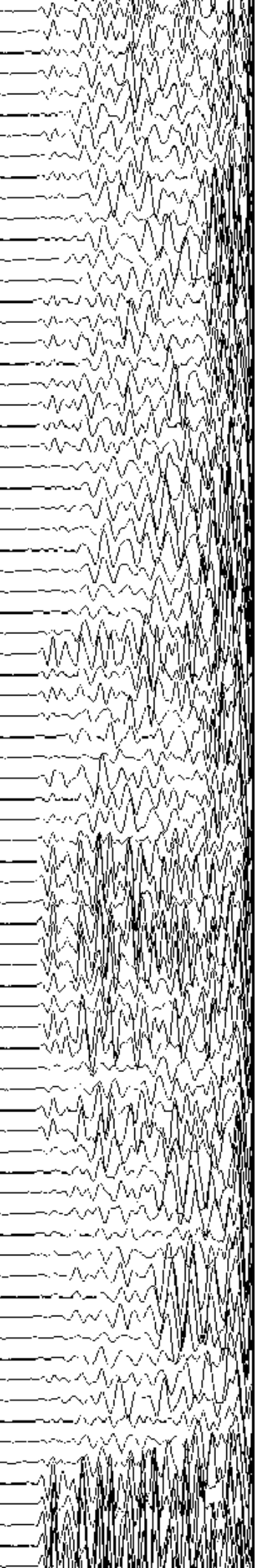
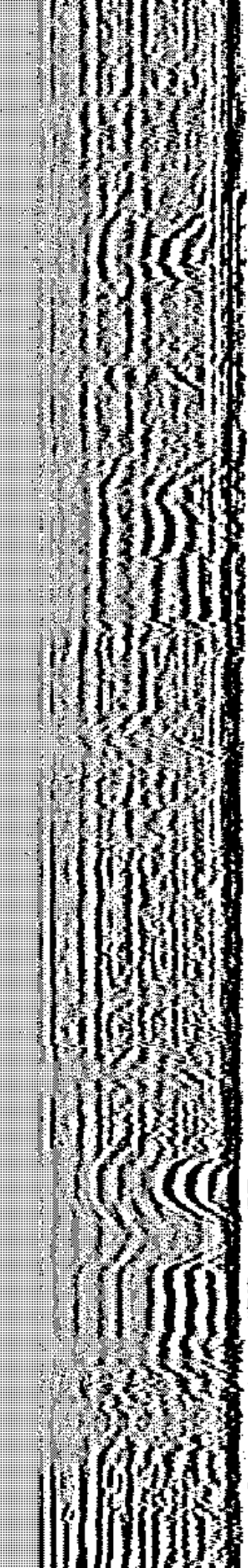
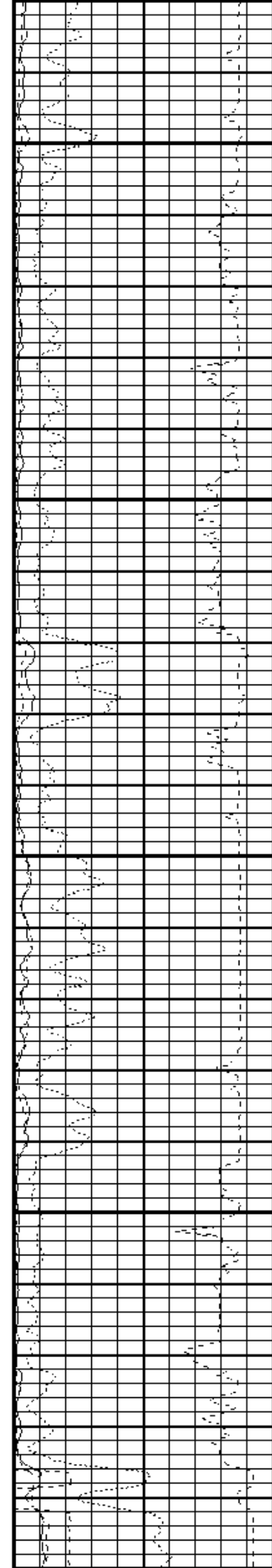
1150

1200

1250

1300

1350



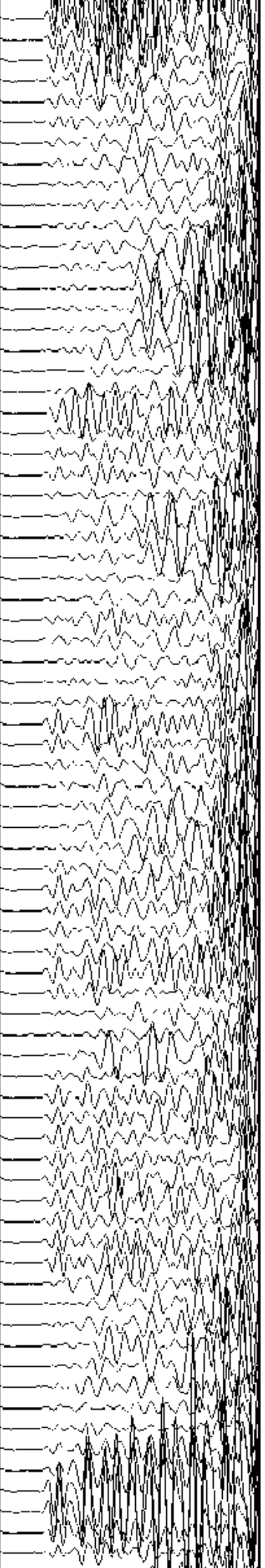
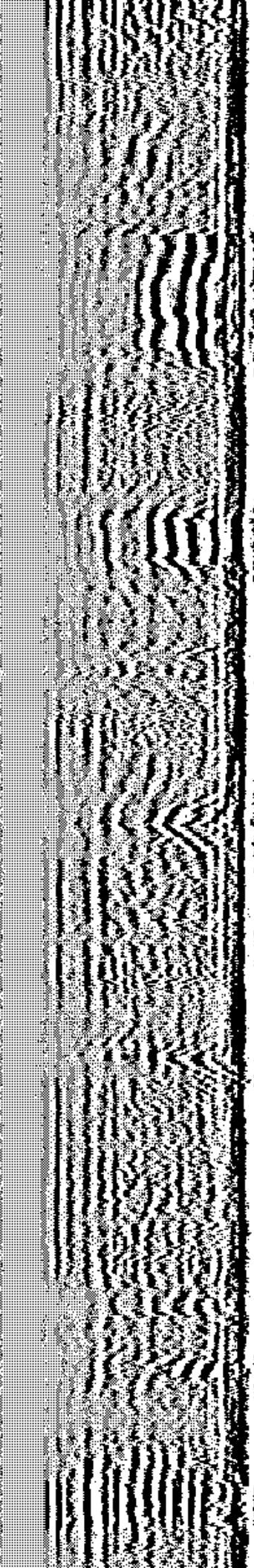
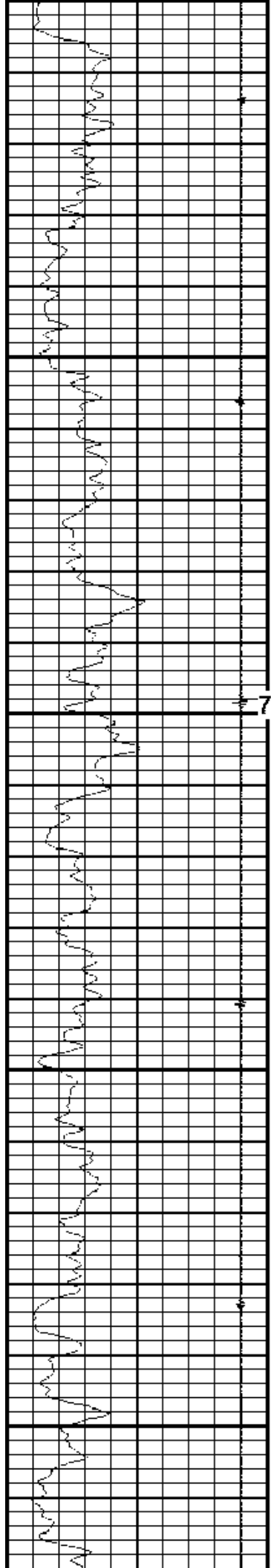
1350

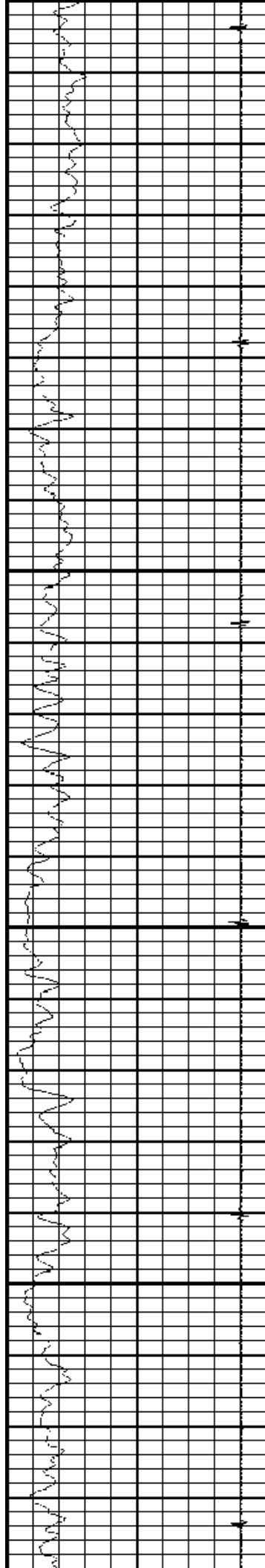
1400

1500

1550

7" 23# J-55



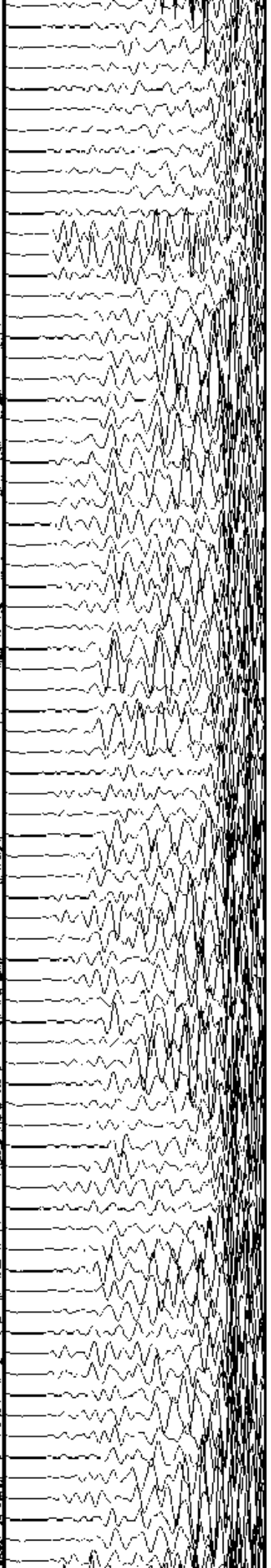
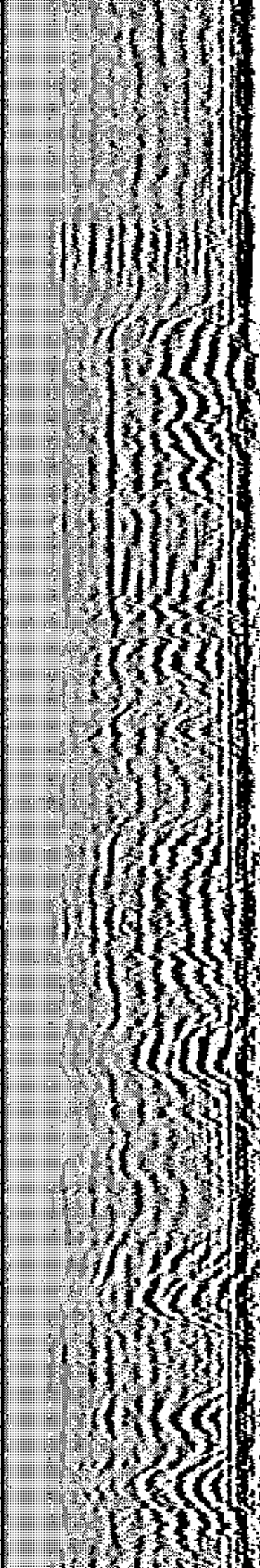
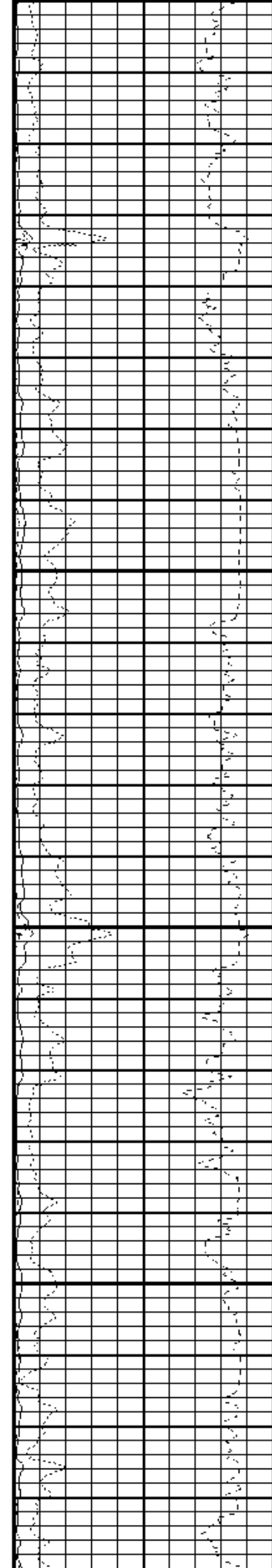


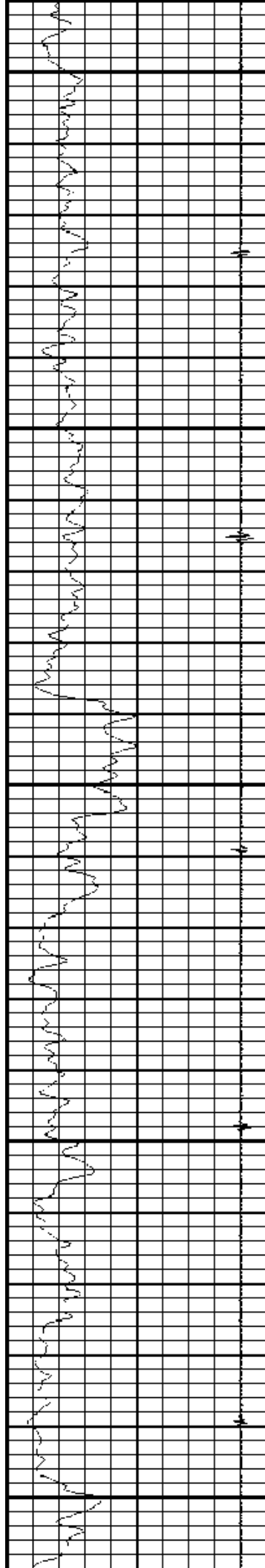
1600

1650

1700

1750





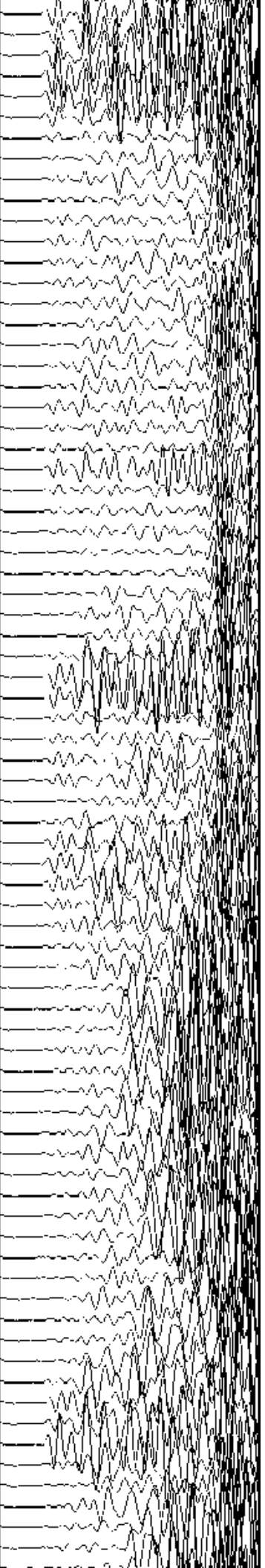
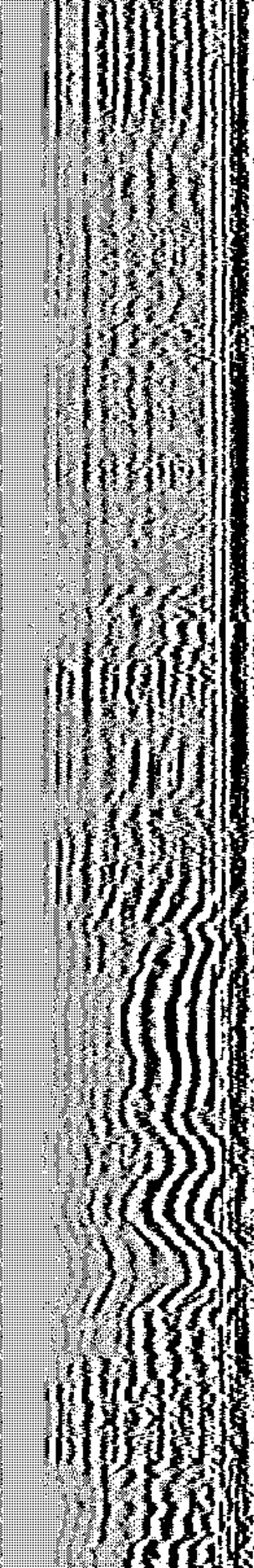
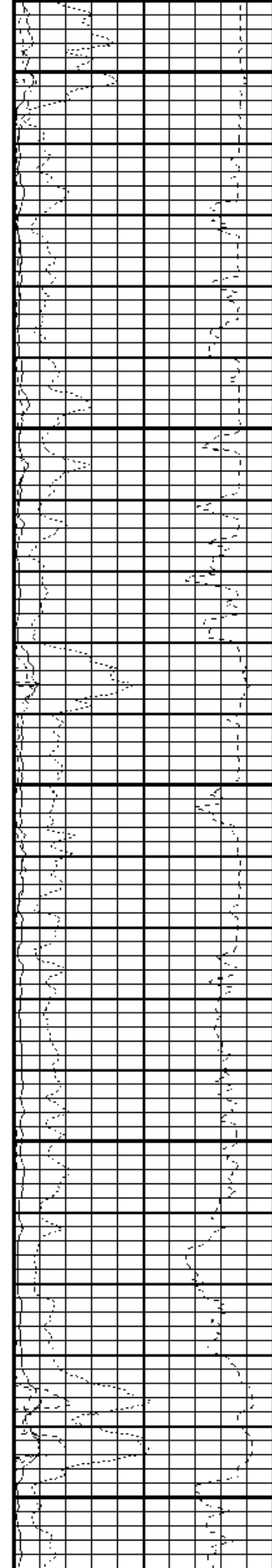
1800

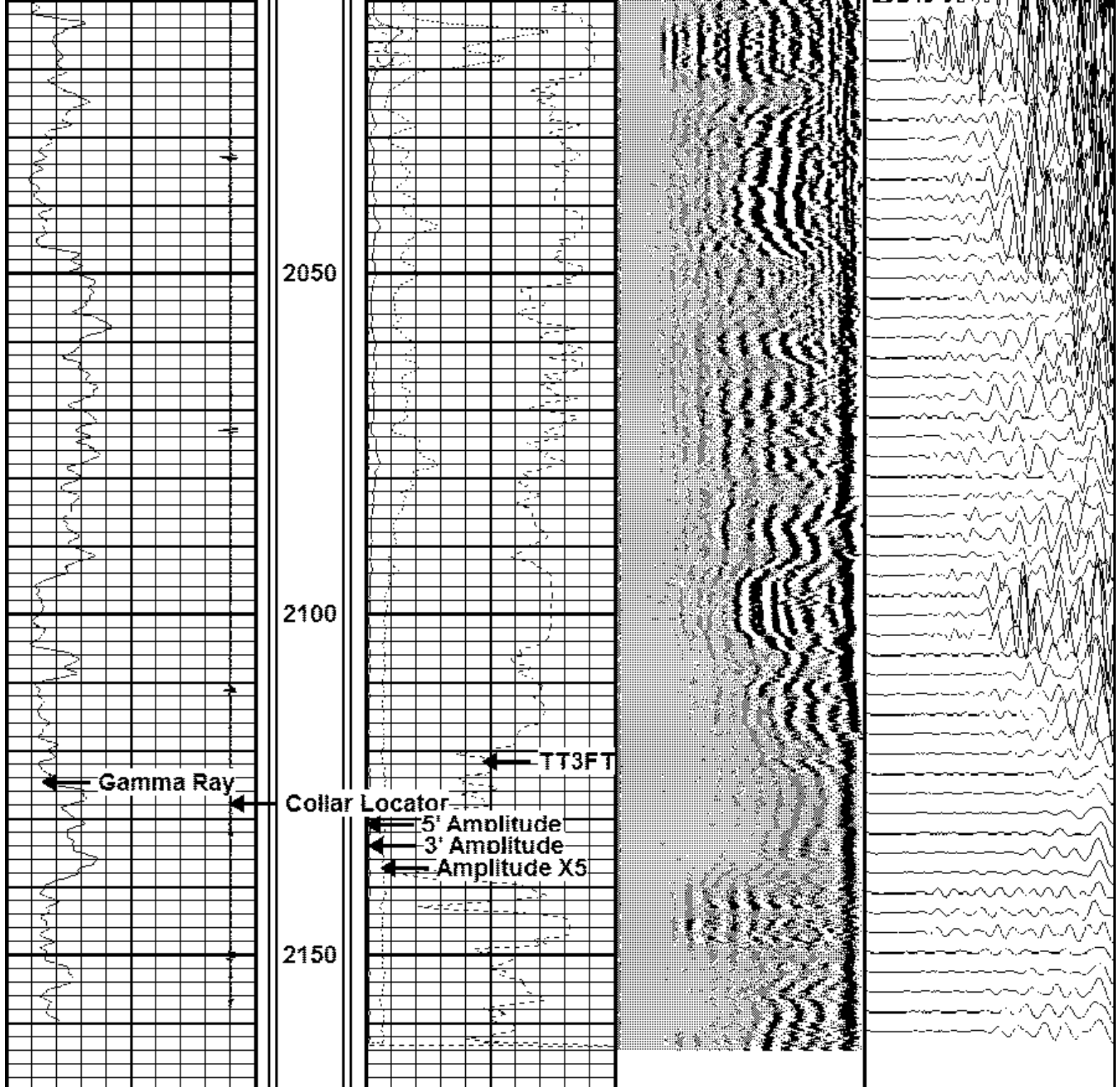
1850

1900

1950

2000

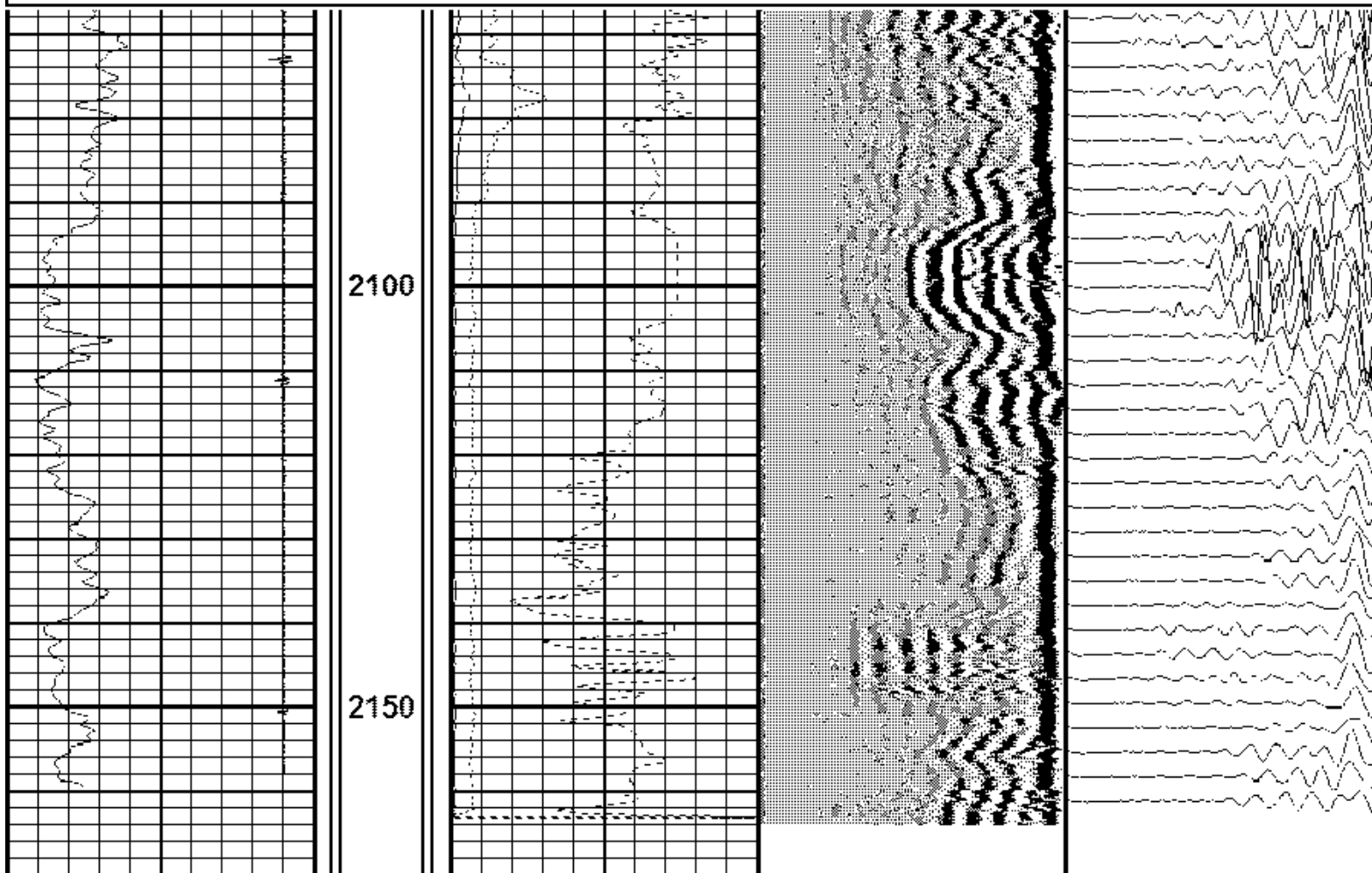




9	Collar Locator	-1	Amplitude X5	200	VDL	1200	200	WVF5FT	1200
0	Gamma Ray	200	(mV)	24					
			3' Amplitude						
0			(mV)	120					
			TT3FT						
1200			(usec)	200					
			Travel Time X10						
300			(usec)	200					
			5' Amplitude						
0			(mV)	120					

Database File xtosmith1hcbl.db
Dataset Pathname wellsmith1h/run1/pass3
Presentation Format cbl4inplo
Dataset Creation Fri Aug 08 12:26:58 2014
Charted by Depth in Feet scaled 1:240

9 Collar Locator -1		Amplitude X5	200	VDL	1200	200	WVF5FT	1200
0 Gamma Ray 200		0 (mV) 24						
		3' Amplitude						
		0 (mV) 120						
		TT3FT						
		1200 (usec) 200						
		Travel Time X10						
		300 (usec) 200						
		5' Amplitude						
		0 (mV) 120						



9 Collar Locator -1		Amplitude X5	200	VDL	1200	200	WVF5FT	1200
0 Gamma Ray 200		0 (mV) 24						
		3' Amplitude						
		0 (mV) 120						
		TT3FT						

1200	(usec)	200
Travel Time X10		
300	(usec)	200
5' Amplitude		
0	(mV)	120

Calibration Report

Database File xtosmith1hcbi.db
 Dataset Pathname wellsmith1h/run1/pass4
 Dataset Creation Fri Aug 08 12:29:29 2014

Gamma Ray Calibration Report

Serial Number: PRO3
 Tool Model: Probe189
 Performed: Fri Nov 16 08:31:18 2012

Calibrator Value: 360.0

Background Reading: 0.0 cps
 Calibrator Reading: 299.0 cps

Sensitivity: 0.6379 /cps

Segmented Cement Bond Log Calibration Report

Serial Number: PRO3
 Tool Model: Probe189

Calibration Casing Diameter: 5.500 in
 Calibration Depth: 0.000 ft

Master Calibration, performed Fri Aug 08 12:03:55 2014.

	Raw (v)		Calibrated (mv)		Results	
	Zero	Cal	Zero	Cal	Gain	Offset
3'	0.026	0.348	0.450	71.000	218.919	-5.167
CAL						
5'	0.018	0.753	0.450	71.000	95.918	-1.267
SUM						
S1						
S2						
S3						
S4						
S5						
S6						
S7						
S8						

Internal Reference Calibration, performed Wed Dec 31 17:00:00 1969:

	Raw (v)		Calibrated (v)		Results	
	Zero	Cal	Zero	Cal	Gain	Offset
CAL						

Air Zero Calibration, performed Wed Dec 31 17:00:00 1969:

	Raw (v)	Calibrated (v)	Results
	<u>Zero</u>	<u>Zero</u>	<u>Offset</u>
3'	0.000	0.000	0.000
5'	0.000	0.000	0.000
SUM			
S1			
S2			
S3			
S4			
S5			
S6			
S7			
S8			