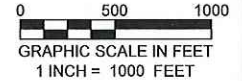
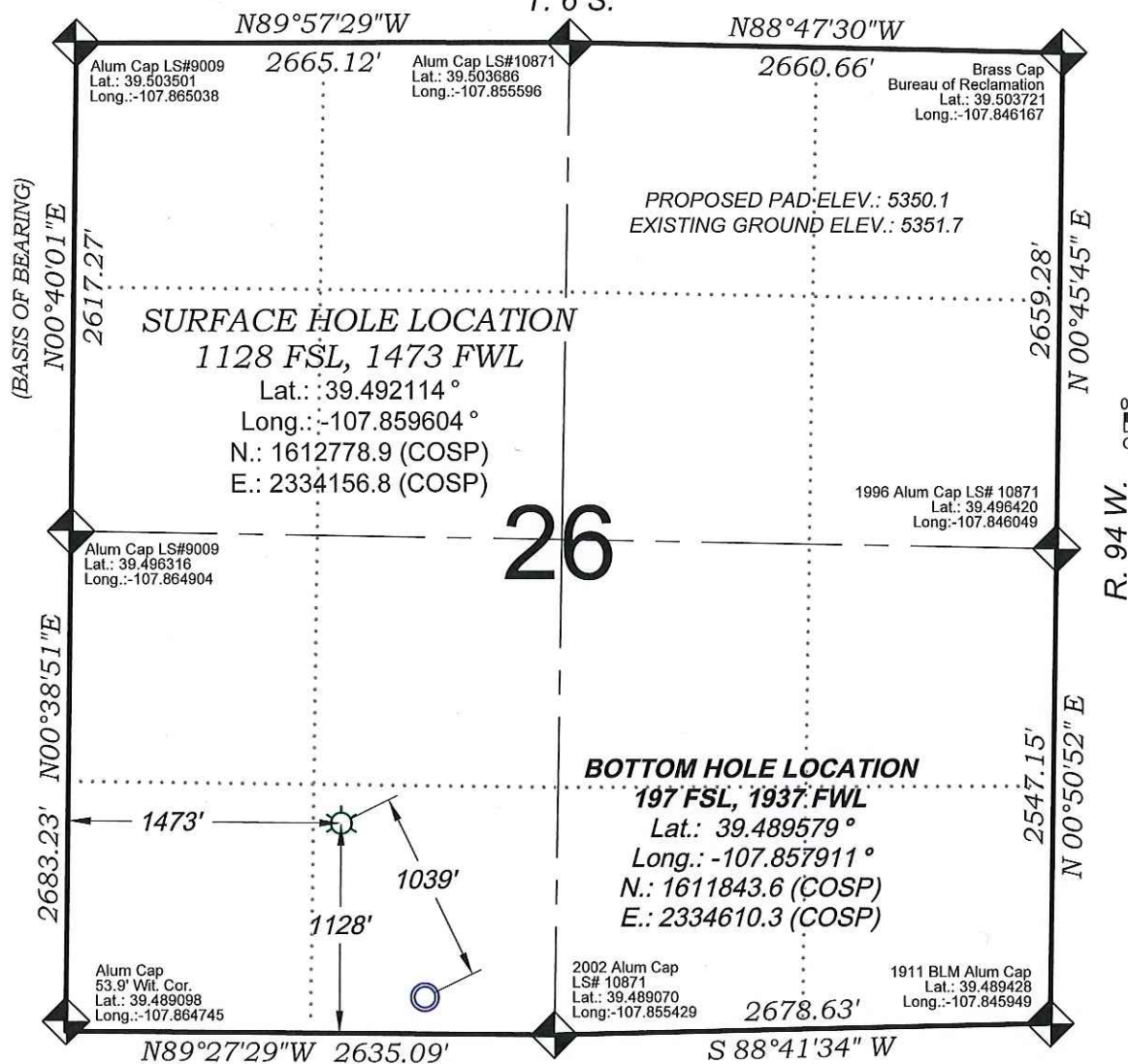


Savage RWF 324-26

T. 6 S.



SEE CONSTRUCTION LAYOUT
 PLAT FOR VISIBLE IMPROVEMENTS
 WITHIN 500' OF THIS LOCATION

SURVEYORS STATEMENT

I, MICHAEL J. LANGHORNE, A REGISTERED LAND SURVEYOR IN THE STATE OF COLORADO DO HEREBY CERTIFY THAT THE SURVEY SHOWN HEREON WAS PREPARED UNDER MY DIRECT SUPERVISION AND HAS BEEN STAKED ON THE GROUND AS SHOWN ON THE PLAT AND CHECKING THAT THIS MAP IS A TRUE REPRESENTATION THEREOF.

Michael J. Langhorne
 36572

MICHAEL J. LANGHORNE, COLORADO REGISTRATION NO. 36572
 FOR AND ON BEHALF OF
 BOOKCLIFF SURVEY SERVICES, INC.

REFERENCES

- 1) Original Survey and Dependent Resurvey & Survey of Tract 38, T. 7 S., R. 95 W., 6th P.M (GLO PLAT)
- 2) U.S.G.S. QUAD: North Mamm Peak, CO

REVISED: 7/30/14

SURVEY DATE: 4/23/08
 MAP DATE: 7/17/14
 SCALE: 1" = 1000'
 PLAT: 1 of 1
 PROJECT: WPX Valley

- LEGEND -

FIELD LOCATED SECTION
 MONUMENTS AS DESCRIBED

FIELD SURVEYED
 WELL LOCATION

CALCULATED BOTTOM
 HOLE LOCATION

CALCULATED SECTION
 CORNER LOCATION

NOTES

- 1) ELEVATIONS BASED ON N.A.V.D. 1988 PUBLISHED COORDINATES.
- 2) LATITUDES AND LONGITUDES ARE BASE ON NAD 83, PUBLISHED COORDINATES
- 3) STATE PLANE COORDINATES ARE BASED ON COLORADO CENTRAL ZONE, U.S. SURVEY FEET.
- 4) ELEVATION MASK SET TO 15°
- 5) GPS OPERATOR J. KIRKPATRICK, OBSERVED A PDOP 1.3 ON SURVEY POINT NUMBER 203 (2009 WPX).
- 6) SURFACE AND BOTTOM HOLE LOCATIONS ARE MEASURED 90° FROM SECTION LINES.

WELL LOCATION PLAT Prepared for:
WPXENERGY WPX Energy Rocky Mountain, LLC

SE1/4 SW1/4, SECTION 26
 T. 6 S., R. 94 W. of the 6th. P.M.
 GARFIELD COUNTY, COLORADO

136 East Third Street
 Rifle, Colorado
 81650 Ph. (970)
 625-2720 Fax (970)
 625-2773

BOOKCLIFF
 Survey Services, Inc.