

# BONANZA CREEK OIL COMPANY

Location: COLORADO Slot: SLOT#04 STATE SEVENTY HOLES F-J-3HNB (384'FNL & 635'FWL,SEC.3)  
Field: WELD COUNTY Well: STATE SEVENTY HOLES F-J-3HNB  
Facility: SEC.03-T4N-R62W Wellbore: STATE SEVENTY HOLES F-J-3HNB PWB

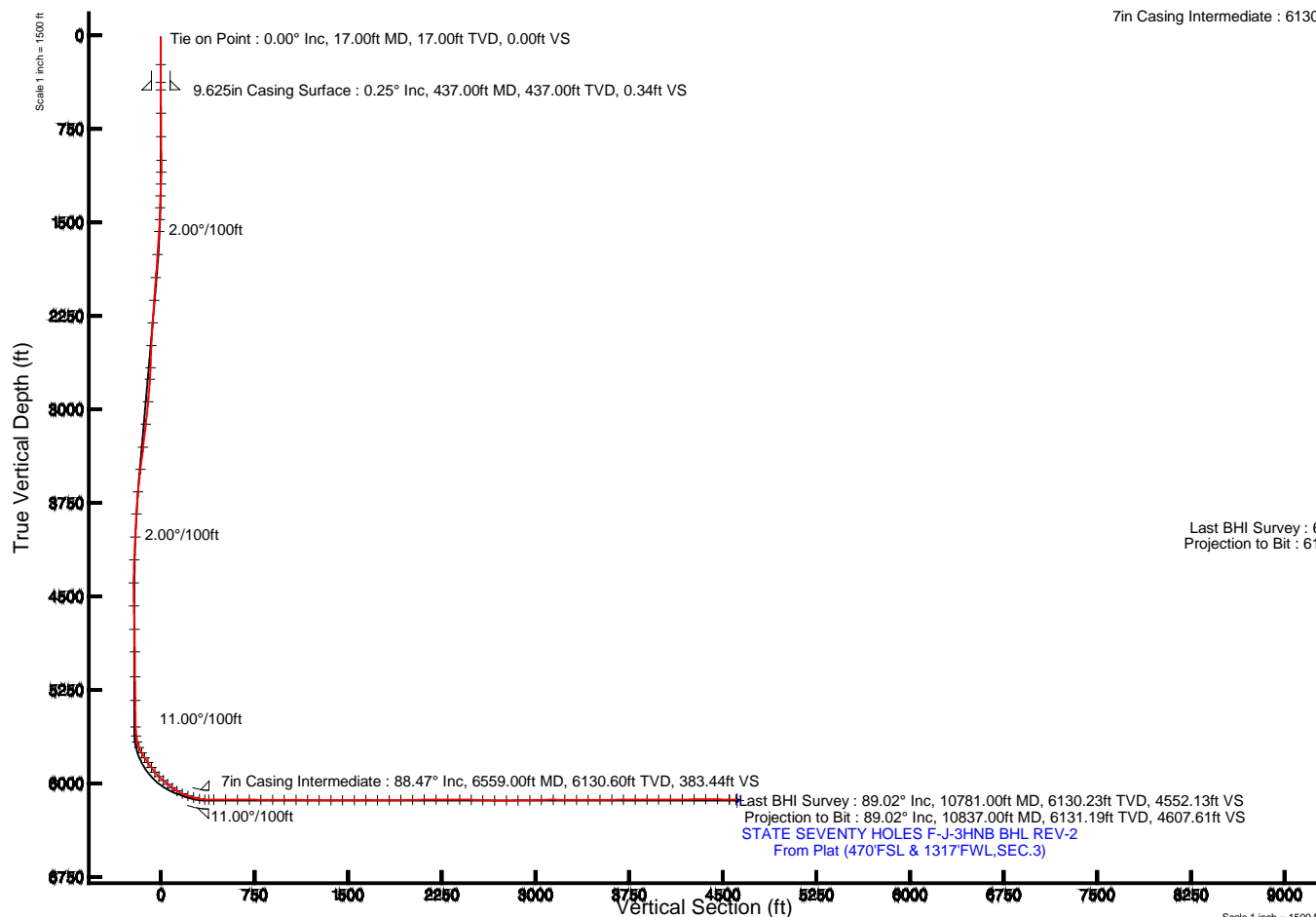


Plot reference wellpath is STATE SEVENTY HOLES F-J-3HNB (REV-B.0) PWP

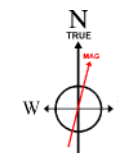
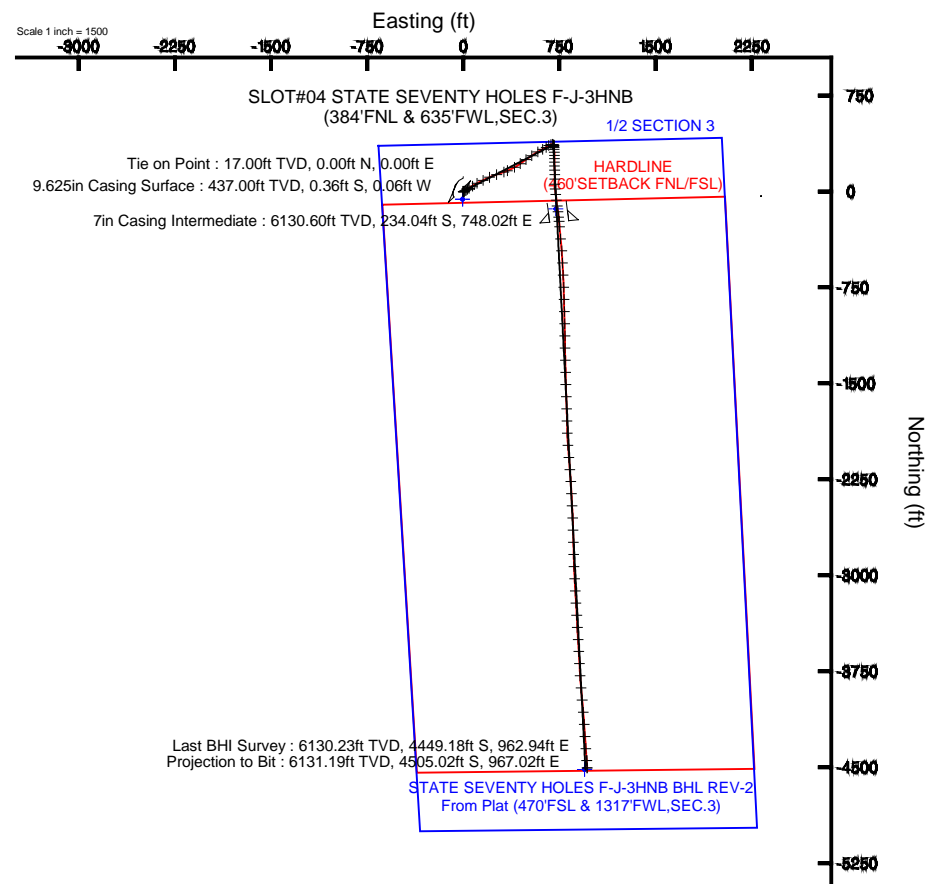
True vertical depths are referenced to RIG (RKB)	Grid System: NAD83 / Lambert Colorado SP, Northern Zone (501), US feet
Measured depths are referenced to RIG (RKB)	North Reference: True north
RIG (RKB) to Mean Sea Level: 4551 feet	Scale: True distance
Mean Sea Level to Mud line (At Slot: SLOT#04 STATE SEVENTY HOLES F-J-3HNB (384'FNL & 635'FWL,SEC.3)): 0 feet	Depths are in feet
Coordinates are in feet referenced to Slot	Created by: guenaler on 5/2/2014

## Location Information

Facility Name			Grid East (US ft)	Grid North (US ft)	Latitude	Longitude
SEC.03-T4N-R62W			3328955.941	1371680.588	40°20'51.558"N	104°19'11.100"W
Slot	Local N (ft)	Local E (ft)	Grid East (US ft)	Grid North (US ft)	Latitude	Longitude
SLOT#04 STATE SEVENTY HOLES F-J-3HNB (384'FNL & 635'FWL,SEC.3)	60.11	5.57	3328960.715	1371740.765	40°20'52.152"N	104°19'11.028"W
RIG (RKB) to Mud line (At Slot: SLOT#04 STATE SEVENTY HOLES F-J-3HNB (384'FNL & 635'FWL,SEC.3))					4551ft	
Mean Sea Level to Mud line (At Slot: SLOT#04 STATE SEVENTY HOLES F-J-3HNB (384'FNL & 635'FWL,SEC.3))					0ft	
RIG (RKB) to Mean Sea Level					4551ft	



Azimuth 168.08° with reference 0.00 N, 0.00 E



BGGM (1945.0 to 2015.0) Dip: 66.97° Field: 52776.5 nT  
Magnetic North is 8.28 degrees East of True North (at 3/26/2014)

To correct azimuth from Magnetic to True add 8.28 degrees



# Actual Wellpath Report

## STATE SEVENTY HOLES F-J-3HNB AWP

Page 1 of 7



REFERENCE WELLPATH IDENTIFICATION			
Operator	BONANZA CREEK OIL COMPANY	Slot	SLOT#04 STATE SEVENTY HOLES F-J-3HNB (384'FNL & 635'FWL,SEC.3)
Area	COLORADO	Well	STATE SEVENTY HOLES F-J-3HNB
Field	WELD COUNTY	Wellbore	STATE SEVENTY HOLES F-J-3HNB AWP
Facility	SEC.03-T4N-R62W		

REPORT SETUP INFORMATION			
Projection System	NAD83 / Lambert Colorado SP, Northern Zone (501), US feet	Software System	WellArchitect® 4.0.0
North Reference	True	User	Guenaler
Scale	0.999958	Report Generated	5/2/2014 at 2:42:36 PM
Convergence at slot	n/a	Database/Source file	WA_Denver/STATE_SEVENTY_HOLES_F-J-3HNB_AWP.xml

WELLPATH LOCATION						
	Local coordinates		Grid coordinates		Geographic coordinates	
	North[ft]	East[ft]	Easting[US ft]	Northing[US ft]	Latitude	Longitude
Slot Location	60.11	5.57	3328960.72	1371740.77	40°20'52.152"N	104°19'11.028"W
Facility Reference Pt			3328955.94	1371680.59	40°20'51.558"N	104°19'11.100"W
Field Reference Pt			3327718.19	1377782.99	40°21'52.020"N	104°19'26.040"W

WELLPATH DATUM			
Calculation method	Minimum curvature	RIG (RKB) to Facility Vertical Datum	4551.00ft
Horizontal Reference Pt	Slot	RIG (RKB) to Mean Sea Level	4551.00ft
Vertical Reference Pt	RIG (RKB)	RIG (RKB) to Mud Line at Slot (SLOT#04 STATE SEVENTY HOLES F-J-3HNB (384'FNL & 635'FWL,SEC.3))	4551.00ft
MD Reference Pt	RIG (RKB)	Section Origin	N 0.00, E 0.00 ft
Field Vertical Reference	Mean Sea Level	Section Azimuth	168.08°



# Actual Wellpath Report

## STATE SEVENTY HOLES F-J-3HNB AWP

Page 2 of 7



REFERENCE WELLPATH IDENTIFICATION			
Operator	BONANZA CREEK OIL COMPANY	Slot	SLOT#04 STATE SEVENTY HOLES F-J-3HNB (384'FNL & 635'FWL,SEC.3)
Area	COLORADO	Well	STATE SEVENTY HOLES F-J-3HNB
Field	WELD COUNTY	Wellbore	STATE SEVENTY HOLES F-J-3HNB AWP
Facility	SEC.03-T4N-R62W		

WELLPATH DATA (99 stations) † = interpolated/extrapolated station										
MD [ft]	Inclination [°]	Azimuth [°]	TVD [ft]	Vert Sect [ft]	North [ft]	East [ft]	Latitude	Longitude	DLS [°/100ft]	Comments
0.00†	0.000	252.270	0.00	0.00	0.00	0.00	40°20'52.152"N	104°19'11.028"W	0.00	
17.00	0.000	252.270	17.00	0.00	0.00	0.00	40°20'52.152"N	104°19'11.028"W	0.00	Tie on Point
236.00	0.190	252.270	236.00	0.04	-0.11	-0.35	40°20'52.151"N	104°19'11.032"W	0.09	
379.00	0.240	104.890	379.00	0.20	-0.26	-0.28	40°20'52.149"N	104°19'11.032"W	0.29	
625.00	0.380	154.270	625.00	1.22	-1.13	0.57	40°20'52.141"N	104°19'11.021"W	0.12	
814.00	0.680	113.200	813.99	2.47	-2.13	1.87	40°20'52.131"N	104°19'11.004"W	0.25	
1004.00	1.050	112.650	1003.97	4.11	-3.25	4.52	40°20'52.120"N	104°19'10.970"W	0.19	
1099.00	1.830	31.820	1098.94	3.51	-2.29	6.12	40°20'52.129"N	104°19'10.949"W	2.06	
1194.00	3.340	38.840	1193.84	0.66	1.15	8.65	40°20'52.163"N	104°19'10.916"W	1.62	
1289.00	5.210	60.870	1288.58	-2.37	5.41	14.16	40°20'52.205"N	104°19'10.845"W	2.59	
1384.00	6.320	60.010	1383.10	-5.27	10.12	22.46	40°20'52.252"N	104°19'10.738"W	1.17	
1479.00	7.740	62.470	1477.38	-8.61	15.69	32.66	40°20'52.307"N	104°19'10.606"W	1.53	
1575.00	9.170	51.430	1572.34	-13.78	23.45	44.37	40°20'52.384"N	104°19'10.455"W	2.25	
1764.00	10.900	58.590	1758.45	-26.50	42.15	71.40	40°20'52.569"N	104°19'10.106"W	1.13	
1953.00	14.660	60.950	1942.74	-39.52	63.09	107.57	40°20'52.775"N	104°19'09.639"W	2.01	
2143.00	17.050	65.250	2125.50	-52.79	86.43	153.89	40°20'53.006"N	104°19'09.040"W	1.40	
2333.00	17.520	65.250	2306.92	-65.33	110.06	205.16	40°20'53.240"N	104°19'08.378"W	0.25	
2524.00	19.060	71.180	2488.28	-75.47	132.16	260.80	40°20'53.458"N	104°19'07.660"W	1.26	
2712.00	17.280	70.590	2666.90	-82.80	151.35	316.19	40°20'53.648"N	104°19'06.944"W	0.95	
2808.00	19.180	66.850	2758.08	-87.73	162.28	344.14	40°20'53.756"N	104°19'06.583"W	2.32	
2998.00	17.960	62.200	2938.20	-101.83	188.22	398.76	40°20'54.012"N	104°19'05.878"W	1.01	
3188.00	15.880	53.330	3119.99	-120.74	217.41	445.53	40°20'54.300"N	104°19'05.274"W	1.74	
3380.00	16.310	55.550	3304.47	-142.07	248.35	488.84	40°20'54.606"N	104°19'04.714"W	0.39	
3565.00	18.180	55.270	3481.14	-163.22	279.49	533.98	40°20'54.914"N	104°19'04.131"W	1.01	
3753.00	16.060	60.960	3660.82	-182.26	308.83	580.83	40°20'55.204"N	104°19'03.526"W	1.44	
3938.00	11.500	62.690	3840.44	-194.69	329.72	619.61	40°20'55.410"N	104°19'03.025"W	2.47	
4124.00	7.810	57.530	4023.78	-204.06	345.02	646.75	40°20'55.561"N	104°19'02.675"W	2.04	
4308.00	7.160	56.560	4206.21	-212.65	358.05	666.87	40°20'55.690"N	104°19'02.415"W	0.36	
4494.00	4.960	74.300	4391.18	-217.44	366.62	684.29	40°20'55.775"N	104°19'02.190"W	1.54	
4681.00	3.580	103.610	4577.68	-215.45	367.43	697.75	40°20'55.783"N	104°19'02.016"W	1.36	



# Actual Wellpath Report

## STATE SEVENTY HOLES F-J-3HNB AWP

Page 3 of 7



REFERENCE WELLPATH IDENTIFICATION			
Operator	BONANZA CREEK OIL COMPANY	Slot	SLOT#04 STATE SEVENTY HOLES F-J-3HNB (384'FNL & 635'FWL,SEC.3)
Area	COLORADO	Well	STATE SEVENTY HOLES F-J-3HNB
Field	WELD COUNTY	Wellbore	STATE SEVENTY HOLES F-J-3HNB AWP
Facility	SEC.03-T4N-R62W		

WELLPATH DATA (99 stations)										
MD [ft]	Inclination [°]	Azimuth [°]	TVD [ft]	Vert Sect [ft]	North [ft]	East [ft]	Latitude	Longitude	DLS [°/100ft]	Comments
4868.00	1.110	152.180	4764.52	-211.20	364.45	704.27	40°20'55.753"N	104°19'01.932"W	1.59	
5049.00	0.840	132.660	4945.49	-208.43	362.00	706.06	40°20'55.729"N	104°19'01.909"W	0.23	
5249.00	0.380	164.060	5145.48	-206.57	360.37	707.32	40°20'55.713"N	104°19'01.893"W	0.28	
5439.00	0.740	197.150	5335.47	-204.87	358.59	707.13	40°20'55.695"N	104°19'01.895"W	0.25	
5650.00	0.930	193.140	5546.45	-202.13	355.63	706.34	40°20'55.666"N	104°19'01.905"W	0.09	
5723.00	5.270	171.990	5619.33	-198.25	351.73	706.67	40°20'55.628"N	104°19'01.901"W	6.05	
5771.00	14.600	174.280	5666.55	-190.01	343.51	707.59	40°20'55.546"N	104°19'01.889"W	19.45	
5819.00	23.560	174.960	5711.87	-174.44	327.90	709.03	40°20'55.392"N	104°19'01.870"W	18.67	
5867.00	29.370	176.170	5754.82	-153.25	306.58	710.67	40°20'55.181"N	104°19'01.849"W	12.16	
5913.00	33.550	179.010	5794.05	-129.59	282.60	711.64	40°20'54.945"N	104°19'01.837"W	9.64	
5961.00	34.950	180.560	5833.73	-103.14	255.59	711.73	40°20'54.678"N	104°19'01.836"W	3.44	
6008.00	36.100	179.740	5871.98	-76.43	228.28	711.66	40°20'54.408"N	104°19'01.836"W	2.65	
6056.00	40.150	178.960	5909.73	-47.37	198.66	712.01	40°20'54.115"N	104°19'01.832"W	8.50	
6103.00	44.710	177.800	5944.42	-16.18	166.97	712.92	40°20'53.802"N	104°19'01.820"W	9.84	
6151.00	50.640	178.610	5976.72	18.74	131.51	714.02	40°20'53.451"N	104°19'01.806"W	12.42	
6198.00	50.480	180.440	6006.58	54.31	95.22	714.32	40°20'53.093"N	104°19'01.802"W	3.03	
6246.00	54.110	178.410	6035.93	91.54	57.26	714.72	40°20'52.718"N	104°19'01.797"W	8.27	
6292.00	58.970	174.820	6061.30	129.48	18.97	717.02	40°20'52.339"N	104°19'01.767"W	12.41	
6340.00	66.060	173.270	6083.44	171.80	-23.35	721.45	40°20'51.921"N	104°19'01.710"W	15.05	
6388.00	73.030	173.100	6100.20	216.57	-67.98	726.79	40°20'51.480"N	104°19'01.641"W	14.52	
6436.00	73.800	172.270	6113.90	262.42	-113.61	732.64	40°20'51.029"N	104°19'01.566"W	2.31	
6483.00	79.780	172.490	6124.64	308.03	-158.94	738.71	40°20'50.581"N	104°19'01.487"W	12.73	
6526.00	87.440	172.590	6129.42	350.60	-201.28	744.25	40°20'50.163"N	104°19'01.416"W	17.82	
6601.00	89.780	176.430	6131.24	425.09	-275.89	751.42	40°20'49.426"N	104°19'01.323"W	5.99	
6696.00	91.240	174.230	6130.39	519.32	-370.57	759.15	40°20'48.490"N	104°19'01.223"W	2.78	
6791.00	89.350	175.210	6129.90	613.68	-465.16	767.90	40°20'47.555"N	104°19'01.111"W	2.24	
6886.00	89.410	177.250	6130.93	707.71	-559.94	774.14	40°20'46.619"N	104°19'01.030"W	2.15	
6981.00	89.420	176.620	6131.90	801.57	-654.80	779.22	40°20'45.681"N	104°19'00.964"W	0.66	
7076.00	89.350	178.380	6132.92	895.28	-749.70	783.36	40°20'44.744"N	104°19'00.911"W	1.85	
7171.00	90.370	178.570	6133.15	988.72	-844.66	785.89	40°20'43.805"N	104°19'00.878"W	1.09	



# Actual Wellpath Report

## STATE SEVENTY HOLES F-J-3HNB AWP

Page 4 of 7



REFERENCE WELLPATH IDENTIFICATION			
Operator	BONANZA CREEK OIL COMPANY	Slot	SLOT#04 STATE SEVENTY HOLES F-J-3HNB (384'FNL & 635'FWL,SEC.3)
Area	COLORADO	Well	STATE SEVENTY HOLES F-J-3HNB
Field	WELD COUNTY	Wellbore	STATE SEVENTY HOLES F-J-3HNB AWP
Facility	SEC.03-T4N-R62W		

WELLPATH DATA (99 stations)										
MD [ft]	Inclination [°]	Azimuth [°]	TVD [ft]	Vert Sect [ft]	North [ft]	East [ft]	Latitude	Longitude	DLS [°/100ft]	Comments
7266.00	89.260	178.430	6133.46	1082.16	-939.63	788.38	40°20'42.867"N	104°19'00.846"W	1.18	
7361.00	89.840	178.830	6134.21	1175.55	-1034.60	790.65	40°20'41.928"N	104°19'00.817"W	0.74	
7456.00	89.690	178.420	6134.60	1268.94	-1129.57	792.93	40°20'40.990"N	104°19'00.787"W	0.46	
7551.00	89.630	179.570	6135.16	1362.22	-1224.55	794.60	40°20'40.051"N	104°19'00.766"W	1.21	
7646.00	89.690	178.320	6135.72	1455.52	-1319.53	796.34	40°20'39.113"N	104°19'00.743"W	1.32	
7741.00	91.230	179.430	6134.96	1548.83	-1414.51	798.21	40°20'38.174"N	104°19'00.719"W	2.00	
7837.00	90.000	177.950	6133.93	1643.18	-1510.47	800.40	40°20'37.226"N	104°19'00.691"W	2.00	
7931.00	89.350	178.080	6134.46	1735.77	-1604.41	803.66	40°20'36.297"N	104°19'00.649"W	0.71	
8026.00	90.220	178.410	6134.82	1829.28	-1699.37	806.57	40°20'35.359"N	104°19'00.612"W	0.98	
8121.00	90.550	178.370	6134.18	1922.75	-1794.33	809.24	40°20'34.421"N	104°19'00.577"W	0.35	
8216.00	91.230	178.320	6132.71	2016.21	-1889.28	811.98	40°20'33.483"N	104°19'00.542"W	0.72	
8311.00	90.370	175.510	6131.38	2110.07	-1984.12	817.09	40°20'32.545"N	104°19'00.476"W	3.09	
8406.00	91.050	175.380	6130.20	2204.28	-2078.81	824.64	40°20'31.610"N	104°19'00.378"W	0.73	
8501.00	89.780	176.230	6129.51	2298.41	-2173.55	831.59	40°20'30.673"N	104°19'00.289"W	1.61	
8596.00	89.850	175.810	6129.82	2392.50	-2268.32	838.18	40°20'29.737"N	104°19'00.204"W	0.45	
8691.00	88.120	177.170	6131.50	2486.46	-2363.12	844.00	40°20'28.800"N	104°19'00.128"W	2.32	
8785.00	88.180	176.270	6134.54	2579.35	-2456.92	849.37	40°20'27.873"N	104°19'00.059"W	0.96	
8880.00	88.370	177.660	6137.40	2673.16	-2551.74	854.40	40°20'26.936"N	104°18'59.994"W	1.48	
8976.00	91.330	179.040	6137.65	2767.61	-2647.69	857.16	40°20'25.988"N	104°18'59.959"W	3.40	
9071.00	90.430	178.630	6136.19	2860.93	-2742.65	859.09	40°20'25.050"N	104°18'59.934"W	1.04	
9166.00	91.320	178.400	6134.74	2954.35	-2837.61	861.56	40°20'24.111"N	104°18'59.902"W	0.97	
9261.00	91.510	177.960	6132.39	3047.85	-2932.53	864.57	40°20'23.173"N	104°18'59.863"W	0.50	
9356.00	89.690	176.820	6131.40	3141.59	-3027.42	868.90	40°20'22.236"N	104°18'59.807"W	2.26	
9451.00	89.850	176.750	6131.78	3235.50	-3122.27	874.23	40°20'21.298"N	104°18'59.738"W	0.18	
9546.00	89.660	176.580	6132.19	3329.43	-3217.11	879.75	40°20'20.361"N	104°18'59.667"W	0.27	
9641.00	89.570	176.950	6132.82	3423.34	-3311.96	885.11	40°20'19.424"N	104°18'59.598"W	0.40	
9736.00	90.460	177.020	6132.80	3517.20	-3406.83	890.11	40°20'18.486"N	104°18'59.533"W	0.94	
9831.00	90.680	176.480	6131.85	3611.11	-3501.67	895.49	40°20'17.549"N	104°18'59.464"W	0.61	
9926.00	90.030	176.180	6131.27	3705.12	-3596.47	901.58	40°20'16.612"N	104°18'59.385"W	0.75	
10020.00	90.340	177.350	6130.96	3798.05	-3690.32	906.88	40°20'15.685"N	104°18'59.317"W	1.29	



# Actual Wellpath Report

## STATE SEVENTY HOLES F-J-3HNB AWP

Page 5 of 7



### REFERENCE WELLPATH IDENTIFICATION

Operator	BONANZA CREEK OIL COMPANY	Slot	SLOT#04 STATE SEVENTY HOLES F-J-3HNB (384'FNL & 635'FWL,SEC.3)
Area	COLORADO	Well	STATE SEVENTY HOLES F-J-3HNB
Field	WELD COUNTY	Wellbore	STATE SEVENTY HOLES F-J-3HNB AWP
Facility	SEC.03-T4N-R62W		

### WELLPATH DATA (99 stations)

MD [ft]	Inclination [°]	Azimuth [°]	TVD [ft]	Vert Sect [ft]	North [ft]	East [ft]	Latitude	Longitude	DLS [°/100ft]	Comments
10116.00	90.650	176.500	6130.13	3892.90	-3786.18	912.03	40°20'14.738"N	104°18'59.251"W	0.94	
10210.00	90.060	174.870	6129.55	3986.07	-3879.90	919.10	40°20'13.812"N	104°18'59.159"W	1.84	
10306.00	90.060	175.120	6129.45	4081.37	-3975.54	927.48	40°20'12.867"N	104°18'59.051"W	0.26	
10401.00	90.060	175.170	6129.35	4175.65	-4070.20	935.52	40°20'11.931"N	104°18'58.947"W	0.05	
10496.00	90.370	175.650	6128.99	4269.87	-4164.89	943.12	40°20'10.995"N	104°18'58.849"W	0.60	
10591.00	90.520	176.360	6128.26	4363.97	-4259.66	949.74	40°20'10.059"N	104°18'58.764"W	0.76	
10686.00	89.040	175.940	6128.62	4458.02	-4354.44	956.12	40°20'09.122"N	104°18'58.682"W	1.62	
10781.00	89.020	175.820	6130.23	4552.13	-4449.18	962.94	40°20'08.186"N	104°18'58.593"W	0.13	Last BHI Survey
10837.00	89.020	175.820	6131.19	4607.61	-4505.02	967.02	40°20'07.634"N	104°18'58.541"W	0.00	Projection to Bit

### HOLE & CASING SECTIONS -

Ref Wellbore: STATE SEVENTY HOLES F-J-3HNB AWP      Ref Wellpath: STATE SEVENTY HOLES F-J-3HNB AWP

String/Diameter	Start MD [ft]	End MD [ft]	Interval [ft]	Start TVD [ft]	End TVD [ft]	Start N/S [ft]	Start E/W [ft]	End N/S [ft]	End E/W [ft]
9.625in Casing Surface	17.00	437.00	420.00	17.00	437.00	0.00	0.00	-0.36	-0.06
7in Casing Intermediate	17.00	6559.00	6542.00	17.00	6130.60	0.00	0.00	-234.04	748.02



# Actual Wellpath Report

## STATE SEVENTY HOLES F-J-3HNB AWP

Page 6 of 7



REFERENCE WELLPATH IDENTIFICATION			
Operator	BONANZA CREEK OIL COMPANY	Slot	SLOT#04 STATE SEVENTY HOLES F-J-3HNB (384'FNL & 635'FWL,SEC.3)
Area	COLORADO	Well	STATE SEVENTY HOLES F-J-3HNB
Field	WELD COUNTY	Wellbore	STATE SEVENTY HOLES F-J-3HNB AWB
Facility	SEC.03-T4N-R62W		

TARGETS									
Name	MD [ft]	TVD [ft]	North [ft]	East [ft]	Grid East [US ft]	Grid North [US ft]	Latitude	Longitude	Shape
STATE SEVENTY HOLES A11-E14-3HNC 1/2 SECTION 3		0.00	-60.11	-5.57	3328955.94	1371680.59	40°20'51.558"N	104°19'11.100"W	polygon
STATE SEVENTY HOLES F-J-3HNB BHL REV-2 From Plat (470'FSL & 1317'FWL,SEC.3)		6138.00	-4517.04	946.48	3329967.19	1367236.92	40°20'07.516"N	104°18'58.806"W	point
STATE SEVENTY HOLES A11-E14-3HNC HARDLINE (460'SETBACK FNL/FSL)		6251.00	-60.11	-5.57	3328955.94	1371680.59	40°20'51.558"N	104°19'11.100"W	polygon
STATE SEVENTY HOLES F-J-3HNB BHL REV-1 From Plat (470'FSL & 1317'FWL,SEC.3)		6251.00	-4517.04	946.48	3329967.19	1367236.92	40°20'07.516"N	104°18'58.806"W	point
STATE SEVENTY HOLES F-J-3HNB TARGET		6251.00	-135.88	721.93	3329684.36	1371614.51	40°20'50.809"N	104°19'01.704"W	point

WELLPATH COMPOSITION -				
Ref Wellbore: STATE SEVENTY HOLES F-J-3HNB AWB		Ref Wellpath: STATE SEVENTY HOLES F-J-3HNB AWP		
Start MD [ft]	End MD [ft]	Positional Uncertainty Model	Log Name/Comment	Wellbore
17.00	6526.00	NaviTrak (Standard)	BHI/Navitrak MWD 8.75" Hole <17'-6226'>	STATE SEVENTY HOLES F-J-3HNB AWB
6526.00	10781.00	NaviTrak (Standard)	BHI/Navitrak MWD 6.125" Hole <6601'-10781'>	STATE SEVENTY HOLES F-J-3HNB AWB
10781.00	10837.00	Blind Drilling (std)	Projection to bit	STATE SEVENTY HOLES F-J-3HNB AWB



**Actual Wellpath Report**  
**STATE SEVENTY HOLES F-J-3HNB AWP**  
Page 7 of 7



REFERENCE WELLPATH IDENTIFICATION			
Operator	BONANZA CREEK OIL COMPANY	Slot	SLOT#04 STATE SEVENTY HOLES F-J-3HNB (384'FNL & 635'FWL,SEC.3)
Area	COLORADO	Well	STATE SEVENTY HOLES F-J-3HNB
Field	WELD COUNTY	Wellbore	STATE SEVENTY HOLES F-J-3HNB AWP
Facility	SEC.03-T4N-R62W		

WELLPATH COMMENTS				
MD [ft]	Inclination [°]	Azimuth [°]	TVD [ft]	Comment
17.00	0.000	252.270	17.00	Tie on Point
10781.00	89.020	175.820	6130.23	Last BHI Survey
10837.00	89.020	175.820	6131.19	Projection to Bit