

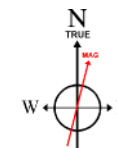
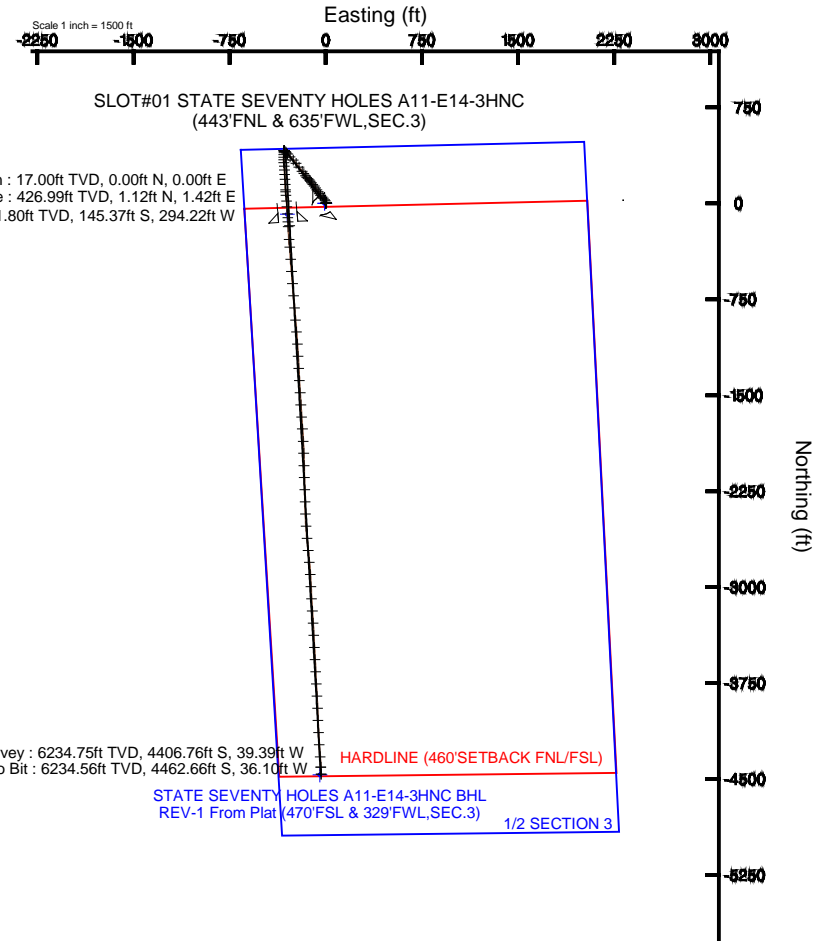
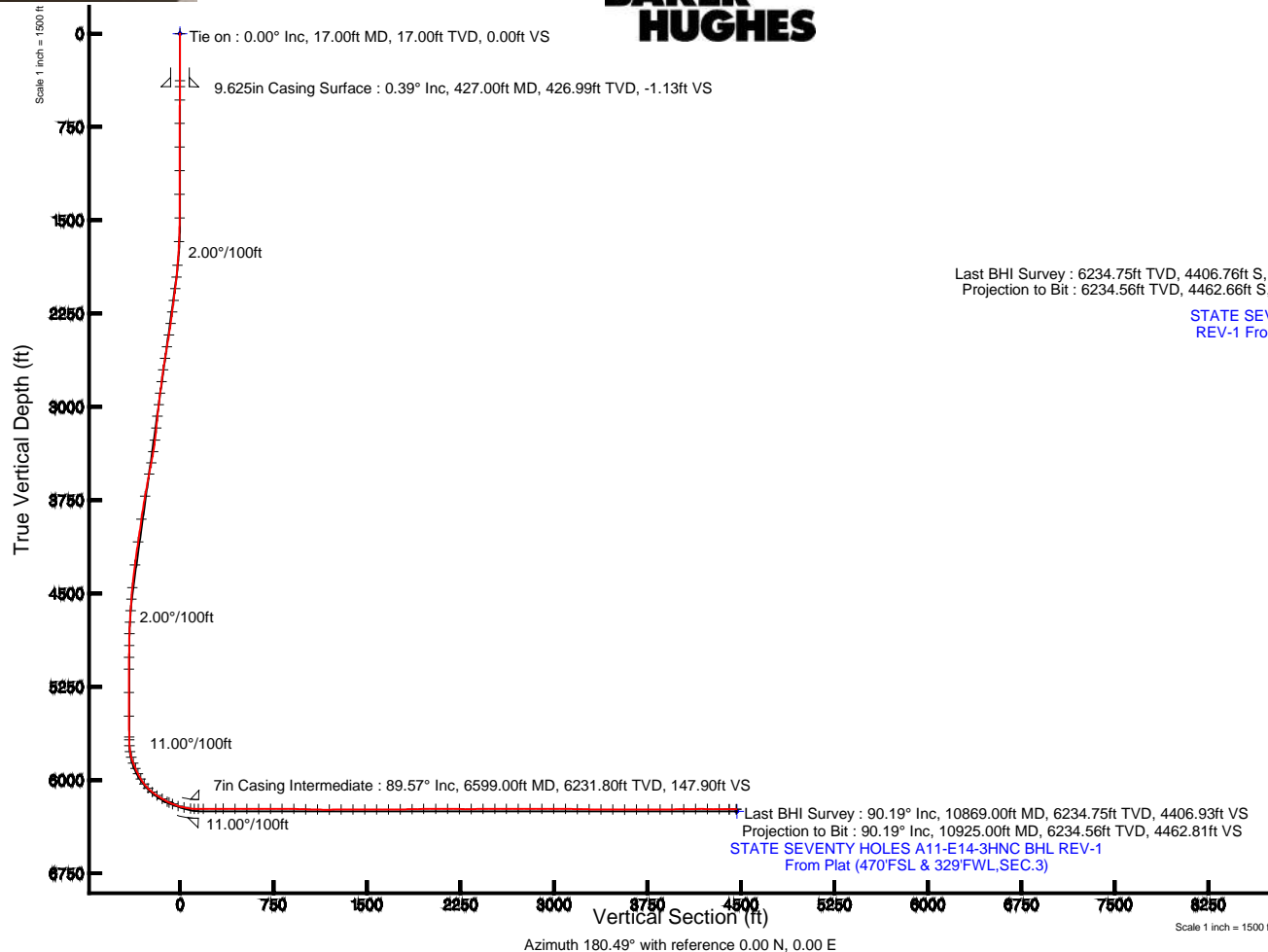
# BONANZA CREEK OIL COMPANY

Location: COLORADO Slot: SLOT#01 STATE SEVENTY HOLES A11-E14-3HNC (443FNL & 635FWL,SEC.3)  
Field: WELD COUNTY Well: STATE SEVENTY HOLES A11-E14-3HNC  
Facility: SEC.03-T4N-R62W Wellbore: STATE SEVENTY HOLES A11-E14-3HNC

Plot reference wellpath is STATE SEVENTY HOLES A11-E14-3HNC (REV-B.0) PWP	
True vertical depths are referenced to CADE 26 (RKB)	Grid System: NAD83 / Lambert Colorado SP, Northern Zone (501), US feet
Measured depths are referenced to CADE 26 (RKB)	North Reference: True north
CADE 26 (RKB) to Mean Sea Level: 4551 feet	Scale: True distance
Mean Sea Level to Mud line (At Slot: SLOT#01 STATE SEVENTY HOLES A11-E14-3HNC (443FNL & 635FWL,SEC.3)): 0 feet	Depths are in feet
Coordinates are in feet referenced to Slot	Created by: guemler on 5/2/2014

## Location Information

Facility Name		Grid East (US Ft)	Grid North (US Ft)	Latitude	Longitude
SEC.03-T4N-R62W		3328955.947	1371680.588	40°25'11.558"N	104°19'11.100"W
Slot	Local N (ft)	Local E (ft)	Grid East (US Ft)	Grid North (US Ft)	Latitude
SLOT#01 STATE SEVENTY HOLES A11-E14-3HNC (443FNL & 635FWL,SEC.3)	-4.40	8.36	3328964.307	1371680.295	40°25'11.554"N
CADE 26 (RKB) to Mud line (At Slot: SLOT#01 STATE SEVENTY HOLES A11-E14-3HNC (443FNL & 635FWL,SEC.3))				4551ft	
Mean Sea Level to Mud line (At Slot: SLOT#01 STATE SEVENTY HOLES A11-E14-3HNC (443FNL & 635FWL,SEC.3))				0ft	
CADE 26 (RKB) to Mean Sea Level				4551ft	



BGGM (1945.0 to 2015.0) Dip: 66.97° Field: 52785.4 nT  
Magnetic North is 8.29 degrees East of True North (at 2/28/2014)

To correct azimuth from Magnetic to True add 8.29 degrees



# Actual Wellpath Report

STATE SEVENTY HOLES A11-E14-3HNC AWP

Page 1 of 7



## REFERENCE WELLPATH IDENTIFICATION

Operator	BONANZA CREEK OIL COMPANY	Slot	SLOT#01 STATE SEVENTY HOLES A11-E14-3HNC (443'FNL & 635'FWL,SEC.3)
Area	COLORADO	Well	STATE SEVENTY HOLES A11-E14-3HNC
Field	WELD COUNTY	Wellbore	STATE SEVENTY HOLES A11-E14-3HNC AWB
Facility	SEC.03-T4N-R62W		

## REPORT SETUP INFORMATION

Projection System	NAD83 / Lambert Colorado SP, Northern Zone (501), US feet	Software System	WellArchitect® 4.0.0
North Reference	True	User	Guenaler
Scale	0.999958	Report Generated	5/2/2014 at 12:37:53 PM
Convergence at slot	n/a	Database/Source file	WA_Denver/STATE_SEVENTY_HOLES_A11-E14-3HNC_AWB.xml

## WELLPATH LOCATION

	Local coordinates		Grid coordinates		Geographic coordinates	
	North[ft]	East[ft]	Easting[US ft]	Northing[US ft]	Latitude	Longitude
Slot Location	-0.40	8.36	3328964.31	1371680.30	40°20'51.554"N	104°19'10.992"W
Facility Reference Pt			3328955.94	1371680.59	40°20'51.558"N	104°19'11.100"W
Field Reference Pt			3327718.19	1377782.99	40°21'52.020"N	104°19'26.040"W

## WELLPATH DATUM

Calculation method	Minimum curvature	CADE 26 (RKB) to Facility Vertical Datum	4551.00ft
Horizontal Reference Pt	Slot	CADE 26 (RKB) to Mean Sea Level	4551.00ft
Vertical Reference Pt	CADE 26 (RKB)	CADE 26 (RKB) to Mud Line at Slot (SLOT#01 STATE SEVENTY HOLES A11-E14-3HNC (443'FNL & 635'FWL,SEC.3))	4551.00ft
MD Reference Pt	CADE 26 (RKB)	Section Origin	N 0.00, E 0.00 ft
Field Vertical Reference	Mean Sea Level	Section Azimuth	180.49°



# Actual Wellpath Report

STATE SEVENTY HOLES A11-E14-3HNC AWP

Page 2 of 7



## REFERENCE WELLPATH IDENTIFICATION

Operator	BONANZA CREEK OIL COMPANY	Slot	SLOT#01 STATE SEVENTY HOLES A11-E14-3HNC (443'FNL & 635'FWL,SEC.3)
Area	COLORADO	Well	STATE SEVENTY HOLES A11-E14-3HNC
Field	WELD COUNTY	Wellbore	STATE SEVENTY HOLES A11-E14-3HNC AWB
Facility	SEC.03-T4N-R62W		

## WELLPATH DATA (111 stations)

MD [ft]	Inclination [°]	Azimuth [°]	TVD [ft]	Vert Sect [ft]	North [ft]	East [ft]	Latitude	Longitude	DLS [°/100ft]	Comments
0.00	0.000	52.230	0.00	0.00	0.00	0.00	40°20'51.554"N	104°19'10.992"W	0.00	
17.00	0.000	52.230	17.00	0.00	0.00	0.00	40°20'51.554"N	104°19'10.992"W	0.00	Tie on
379.00	0.460	52.230	379.00	-0.90	0.89	1.15	40°20'51.563"N	104°19'10.977"W	0.13	
533.00	0.260	31.390	532.99	-1.58	1.57	1.82	40°20'51.569"N	104°19'10.969"W	0.15	
721.00	0.420	48.290	720.99	-2.41	2.39	2.56	40°20'51.578"N	104°19'10.959"W	0.10	
912.00	0.370	75.760	911.99	-3.04	3.01	3.68	40°20'51.584"N	104°19'10.945"W	0.10	
1102.00	0.350	34.130	1101.98	-3.68	3.64	4.60	40°20'51.590"N	104°19'10.933"W	0.14	
1292.00	0.170	91.980	1291.98	-4.15	4.11	5.20	40°20'51.595"N	104°19'10.925"W	0.16	
1481.00	0.440	110.680	1480.98	-3.90	3.84	6.16	40°20'51.592"N	104°19'10.912"W	0.15	
1671.00	3.080	329.830	1670.89	-8.04	8.00	4.28	40°20'51.633"N	104°19'10.937"W	1.81	
1862.00	5.340	329.000	1861.37	-20.03	20.06	-2.88	40°20'51.752"N	104°19'11.029"W	1.18	
1957.00	7.060	318.540	1955.81	-28.14	28.22	-9.02	40°20'51.833"N	104°19'11.109"W	2.16	
2052.00	10.090	318.960	2049.74	-38.72	38.88	-18.35	40°20'51.938"N	104°19'11.229"W	3.19	
2147.00	9.790	316.140	2143.31	-50.72	50.98	-29.41	40°20'52.058"N	104°19'11.372"W	0.60	
2242.00	10.600	320.350	2236.81	-63.18	63.53	-40.58	40°20'52.182"N	104°19'11.516"W	1.16	
2336.00	9.190	321.750	2329.41	-75.64	76.08	-50.75	40°20'52.306"N	104°19'11.647"W	1.52	
2431.00	10.790	330.430	2422.97	-89.25	89.77	-59.84	40°20'52.441"N	104°19'11.765"W	2.31	
2527.00	11.640	325.960	2517.14	-105.01	105.61	-69.69	40°20'52.598"N	104°19'11.892"W	1.27	
2621.00	11.130	326.000	2609.29	-120.30	120.99	-80.07	40°20'52.750"N	104°19'12.026"W	0.54	
2715.00	10.460	324.970	2701.63	-134.72	135.50	-90.04	40°20'52.893"N	104°19'12.155"W	0.74	
2811.00	9.820	317.320	2796.13	-147.79	148.66	-100.60	40°20'53.023"N	104°19'12.291"W	1.55	
2905.00	9.720	320.080	2888.77	-159.67	160.64	-111.12	40°20'53.141"N	104°19'12.427"W	0.51	
3000.00	8.400	321.080	2982.58	-171.14	172.19	-120.63	40°20'53.255"N	104°19'12.550"W	1.40	
3094.00	7.700	319.100	3075.66	-181.17	182.29	-129.07	40°20'53.355"N	104°19'12.659"W	0.80	
3190.00	8.500	310.860	3170.70	-190.59	191.79	-138.64	40°20'53.449"N	104°19'12.783"W	1.47	
3289.00	9.370	321.520	3268.50	-201.59	202.89	-149.19	40°20'53.559"N	104°19'12.919"W	1.89	
3381.00	11.330	322.200	3359.00	-214.51	215.89	-159.39	40°20'53.687"N	104°19'13.051"W	2.13	
3474.00	13.760	323.750	3449.78	-230.55	232.03	-171.53	40°20'53.847"N	104°19'13.207"W	2.64	
3566.00	13.680	322.720	3539.15	-247.91	249.51	-184.59	40°20'54.020"N	104°19'13.376"W	0.28	
3750.00	12.440	323.300	3718.39	-280.90	282.72	-209.62	40°20'54.348"N	104°19'13.699"W	0.68	



# Actual Wellpath Report

STATE SEVENTY HOLES A11-E14-3HNC AWP

Page 3 of 7



REFERENCE WELLPATH IDENTIFICATION				
Operator	BONANZA CREEK OIL COMPANY	Slot	SLOT#01 STATE SEVENTY HOLES A11-E14-3HNC (443'FNL & 635'FWL,SEC.3)	
Area	COLORADO	Well	STATE SEVENTY HOLES A11-E14-3HNC	
Field	WELD COUNTY	Wellbore	STATE SEVENTY HOLES A11-E14-3HNC AWB	
Facility	SEC.03-T4N-R62W			

WELLPATH DATA (111 stations)										
MD [ft]	Inclination [°]	Azimuth [°]	TVD [ft]	Vert Sect [ft]	North [ft]	East [ft]	Latitude	Longitude	DLS [°/100ft]	Comments
3937.00	10.090	321.690	3901.77	-309.71	311.72	-231.81	40°20'54.634"N	104°19'13.986"W	1.27	
4124.00	11.470	317.230	4085.47	-336.02	338.23	-254.59	40°20'54.896"N	104°19'14.280"W	0.86	
4312.00	9.660	318.710	4270.28	-361.40	363.80	-277.70	40°20'55.149"N	104°19'14.579"W	0.97	
4498.00	8.130	315.960	4454.04	-382.41	384.98	-297.14	40°20'55.358"N	104°19'14.830"W	0.85	
4591.00	5.780	312.620	4546.35	-390.24	392.88	-305.16	40°20'55.436"N	104°19'14.933"W	2.56	
4682.00	5.300	316.740	4636.92	-396.35	399.05	-311.41	40°20'55.497"N	104°19'15.014"W	0.68	
4776.00	4.700	312.170	4730.56	-402.05	404.79	-317.24	40°20'55.554"N	104°19'15.089"W	0.77	
4868.00	3.140	306.540	4822.35	-406.04	408.82	-322.06	40°20'55.594"N	104°19'15.152"W	1.74	
4963.00	0.660	345.980	4917.29	-408.10	410.91	-324.28	40°20'55.614"N	104°19'15.180"W	2.80	
5058.00	0.310	315.830	5012.28	-408.81	411.62	-324.59	40°20'55.621"N	104°19'15.184"W	0.44	
5153.00	0.190	72.030	5107.28	-409.04	411.85	-324.62	40°20'55.624"N	104°19'15.185"W	0.45	
5342.00	0.500	45.460	5296.28	-409.72	412.53	-323.74	40°20'55.630"N	104°19'15.173"W	0.18	
5532.00	0.370	203.860	5486.28	-409.75	412.55	-323.39	40°20'55.631"N	104°19'15.169"W	0.45	
5699.00	0.980	214.230	5653.27	-408.06	410.87	-324.41	40°20'55.614"N	104°19'15.182"W	0.37	
5722.00	0.760	207.690	5676.26	-407.77	410.58	-324.60	40°20'55.611"N	104°19'15.184"W	1.05	
5769.00	3.360	186.220	5723.23	-406.12	408.93	-324.89	40°20'55.595"N	104°19'15.188"W	5.68	
5816.00	9.330	183.030	5769.92	-400.94	403.75	-325.24	40°20'55.544"N	104°19'15.193"W	12.72	
5863.00	15.020	185.000	5815.84	-391.05	393.87	-325.97	40°20'55.446"N	104°19'15.202"W	12.14	
5912.00	20.710	181.620	5862.46	-376.05	378.88	-326.77	40°20'55.298"N	104°19'15.212"W	11.80	
5959.00	23.560	183.560	5906.00	-358.35	361.19	-327.59	40°20'55.123"N	104°19'15.223"W	6.26	
6007.00	26.770	180.510	5949.44	-337.96	340.80	-328.28	40°20'54.922"N	104°19'15.232"W	7.21	
6054.00	31.500	173.920	5990.49	-315.16	317.99	-327.08	40°20'54.696"N	104°19'15.216"W	12.15	
6102.00	37.470	173.380	6030.04	-288.19	290.99	-324.06	40°20'54.429"N	104°19'15.177"W	12.45	
6150.00	44.830	178.120	6066.16	-256.74	259.52	-321.82	40°20'54.119"N	104°19'15.148"W	16.64	
6196.00	51.940	176.160	6096.70	-222.44	225.20	-320.07	40°20'53.779"N	104°19'15.126"W	15.78	
6243.00	56.170	177.070	6124.28	-184.48	187.23	-317.83	40°20'53.404"N	104°19'15.097"W	9.14	
6291.00	59.570	177.350	6149.80	-143.91	146.63	-315.86	40°20'53.003"N	104°19'15.071"W	7.10	
6339.00	62.750	176.300	6172.95	-101.95	104.66	-313.52	40°20'52.588"N	104°19'15.041"W	6.90	
6355.00	64.730	175.630	6180.03	-87.65	90.35	-312.51	40°20'52.447"N	104°19'15.028"W	12.93	
6386.00	68.800	175.380	6192.26	-59.28	61.95	-310.28	40°20'52.166"N	104°19'14.999"W	13.15	



# Actual Wellpath Report

STATE SEVENTY HOLES A11-E14-3HNC AWP

Page 4 of 7



REFERENCE WELLPATH IDENTIFICATION			
Operator	BONANZA CREEK OIL COMPANY	Slot	SLOT#01 STATE SEVENTY HOLES A11-E14-3HNC (443'FNL & 635'FWL,SEC.3)
Area	COLORADO	Well	STATE SEVENTY HOLES A11-E14-3HNC
Field	WELD COUNTY	Wellbore	STATE SEVENTY HOLES A11-E14-3HNC AWB
Facility	SEC.03-T4N-R62W		

WELLPATH DATA (111 stations)										
MD [ft]	Inclination [°]	Azimuth [°]	TVD [ft]	Vert Sect [ft]	North [ft]	East [ft]	Latitude	Longitude	DLS [°/100ft]	Comments
6433.00	72.490	175.140	6207.83	-15.13	17.77	-306.62	40°20'51.730"N	104°19'14.952"W	7.87	
6481.00	78.700	175.210	6219.77	31.14	-28.53	-302.71	40°20'51.272"N	104°19'14.902"W	12.94	
6536.00	82.700	175.550	6228.66	85.19	-82.62	-298.34	40°20'50.738"N	104°19'14.845"W	7.30	
6566.00	87.970	176.220	6231.10	114.98	-112.44	-296.19	40°20'50.443"N	104°19'14.817"W	17.71	
6637.00	91.420	177.740	6231.47	185.84	-183.32	-292.45	40°20'49.742"N	104°19'14.769"W	5.31	
6737.00	90.000	175.510	6230.23	285.59	-283.13	-286.57	40°20'48.756"N	104°19'14.693"W	2.64	
6798.00	90.150	174.910	6230.15	346.33	-343.92	-281.47	40°20'48.155"N	104°19'14.627"W	1.01	
6893.00	89.790	176.090	6230.20	440.97	-438.63	-274.02	40°20'47.220"N	104°19'14.531"W	1.30	
6988.00	89.070	175.500	6231.15	535.65	-533.36	-267.05	40°20'46.283"N	104°19'14.441"W	0.98	
7083.00	89.630	175.210	6232.23	630.26	-628.05	-259.36	40°20'45.348"N	104°19'14.342"W	0.66	
7178.00	90.680	175.490	6231.97	724.87	-722.73	-251.66	40°20'44.412"N	104°19'14.242"W	1.14	
7273.00	90.710	175.300	6230.82	819.49	-817.42	-244.03	40°20'43.476"N	104°19'14.144"W	0.20	
7368.00	88.240	174.890	6231.69	914.06	-912.06	-235.91	40°20'42.541"N	104°19'14.039"W	2.64	
7463.00	88.360	175.840	6234.51	1008.63	-1006.70	-228.24	40°20'41.606"N	104°19'13.940"W	1.01	
7558.00	88.830	176.210	6236.84	1103.32	-1101.45	-221.65	40°20'40.670"N	104°19'13.855"W	0.63	
7653.00	90.370	176.850	6237.50	1198.08	-1196.27	-215.91	40°20'39.733"N	104°19'13.780"W	1.76	
7748.00	90.590	177.060	6236.70	1292.90	-1291.13	-210.86	40°20'38.795"N	104°19'13.715"W	0.32	
7843.00	90.280	176.700	6235.98	1387.71	-1385.99	-205.69	40°20'37.858"N	104°19'13.648"W	0.50	
7938.00	90.030	176.490	6235.72	1482.49	-1480.82	-200.05	40°20'36.921"N	104°19'13.576"W	0.34	
8033.00	89.780	176.960	6235.88	1577.28	-1575.66	-194.62	40°20'35.984"N	104°19'13.505"W	0.56	
8128.00	90.500	176.460	6235.65	1672.07	-1670.50	-189.17	40°20'35.047"N	104°19'13.435"W	0.92	
8222.00	90.090	175.020	6235.17	1765.75	-1764.24	-182.18	40°20'34.120"N	104°19'13.345"W	1.59	
8318.00	91.360	177.350	6233.95	1861.46	-1860.01	-175.80	40°20'33.174"N	104°19'13.262"W	2.76	
8412.00	91.390	178.210	6231.70	1955.32	-1953.91	-172.16	40°20'32.246"N	104°19'13.215"W	0.92	
8508.00	89.660	178.630	6230.82	2051.25	-2049.87	-169.51	40°20'31.298"N	104°19'13.181"W	1.85	
8602.00	89.410	178.300	6231.58	2145.19	-2143.83	-166.99	40°20'30.369"N	104°19'13.149"W	0.44	
8697.00	89.720	178.170	6232.30	2240.11	-2238.78	-164.07	40°20'29.431"N	104°19'13.111"W	0.35	
8792.00	90.030	178.400	6232.51	2335.04	-2333.74	-161.22	40°20'28.493"N	104°19'13.074"W	0.41	
8887.00	91.050	178.160	6231.61	2429.97	-2428.69	-158.37	40°20'27.554"N	104°19'13.037"W	1.10	
8982.00	90.060	175.890	6230.69	2524.78	-2523.55	-153.44	40°20'26.617"N	104°19'12.974"W	2.61	



# Actual Wellpath Report

STATE SEVENTY HOLES A11-E14-3HNC AWP

Page 5 of 7



## REFERENCE WELLPATH IDENTIFICATION

Operator	BONANZA CREEK OIL COMPANY	Slot	SLOT#01 STATE SEVENTY HOLES A11-E14-3HNC (443'FNL & 635'FWL,SEC.3)
Area	COLORADO	Well	STATE SEVENTY HOLES A11-E14-3HNC
Field	WELD COUNTY	Wellbore	STATE SEVENTY HOLES A11-E14-3HNC AWB
Facility	SEC.03-T4N-R62W		

## WELLPATH DATA (111 stations)

MD [ft]	Inclination [°]	Azimuth [°]	TVD [ft]	Vert Sect [ft]	North [ft]	East [ft]	Latitude	Longitude	DLS [°/100ft]	Comments
9077.00	89.690	175.000	6230.90	2619.41	-2618.25	-145.90	40°20'25.681"N	104°19'12.876"W	1.01	
9172.00	90.030	174.690	6231.13	2713.95	-2712.87	-137.36	40°20'24.746"N	104°19'12.766"W	0.48	
9267.00	89.940	173.870	6231.16	2808.39	-2807.39	-127.89	40°20'23.812"N	104°19'12.644"W	0.87	
9362.00	90.000	177.220	6231.21	2903.02	-2902.09	-120.52	40°20'22.876"N	104°19'12.548"W	3.53	
9457.00	90.430	177.200	6230.85	2997.87	-2996.98	-115.89	40°20'21.939"N	104°19'12.489"W	0.45	
9552.00	89.080	176.430	6231.26	3092.67	-3091.83	-110.61	40°20'21.001"N	104°19'12.420"W	1.64	
9647.00	88.800	176.500	6233.01	3187.42	-3186.63	-104.76	40°20'20.065"N	104°19'12.345"W	0.30	
9742.00	89.000	176.930	6234.84	3282.19	-3281.46	-99.32	40°20'19.128"N	104°19'12.275"W	0.50	
9838.00	89.070	176.710	6236.45	3377.98	-3377.30	-93.99	40°20'18.180"N	104°19'12.206"W	0.24	
9933.00	90.370	176.930	6236.92	3472.78	-3472.15	-88.72	40°20'17.243"N	104°19'12.138"W	1.39	
10028.00	89.440	176.850	6237.08	3567.59	-3567.01	-83.57	40°20'16.306"N	104°19'12.071"W	0.98	
10123.00	91.080	177.680	6236.64	3662.44	-3661.89	-79.03	40°20'15.368"N	104°19'12.013"W	1.93	
10218.00	89.820	176.470	6235.90	3757.26	-3756.76	-74.19	40°20'14.431"N	104°19'11.950"W	1.84	
10313.00	90.400	177.090	6235.72	3852.06	-3851.61	-68.85	40°20'13.493"N	104°19'11.881"W	0.89	
10408.00	90.460	177.450	6235.00	3946.91	-3946.50	-64.33	40°20'12.556"N	104°19'11.823"W	0.38	
10503.00	90.990	178.170	6233.80	4041.80	-4041.42	-60.70	40°20'11.618"N	104°19'11.776"W	0.94	
10598.00	90.650	176.600	6232.44	4136.64	-4136.31	-56.36	40°20'10.680"N	104°19'11.720"W	1.69	
10693.00	89.260	176.330	6232.52	4231.41	-4231.13	-50.50	40°20'09.743"N	104°19'11.644"W	1.49	
10788.00	88.860	176.290	6234.07	4326.14	-4325.92	-44.39	40°20'08.806"N	104°19'11.565"W	0.42	
10869.00	90.190	176.630	6234.75	4406.93	-4406.76	-39.39	40°20'08.008"N	104°19'11.501"W	1.69	Last BHI Survey
10925.00	90.190	176.630	6234.56	4462.81	-4462.66	-36.10	40°20'07.455"N	104°19'11.458"W	0.00	Projection to Bit

## HOLE & CASING SECTIONS -

Ref Wellbore: STATE SEVENTY HOLES A11-E14-3HNC AWB      Ref Wellpath: STATE SEVENTY HOLES A11-E14-3HNC AWP

String/Diameter	Start MD [ft]	End MD [ft]	Interval [ft]	Start TVD [ft]	End TVD [ft]	Start N/S [ft]	Start E/W [ft]	End N/S [ft]	End E/W [ft]
9.625in Casing Surface	17.00	427.00	410.00	17.00	426.99	0.00	0.00	1.12	1.42
7in Casing Intermediate	17.00	6599.00	6582.00	17.00	6231.80	0.00	0.00	-145.37	-294.22



# Actual Wellpath Report

STATE SEVENTY HOLES A11-E14-3HNC AWP

Page 6 of 7



## REFERENCE WELLPATH IDENTIFICATION

Operator	BONANZA CREEK OIL COMPANY	Slot	SLOT#01 STATE SEVENTY HOLES A11-E14-3HNC (443'FNL & 635'FWL,SEC.3)
Area	COLORADO	Well	STATE SEVENTY HOLES A11-E14-3HNC
Field	WELD COUNTY	Wellbore	STATE SEVENTY HOLES A11-E14-3HNC AWB
Facility	SEC.03-T4N-R62W		

## TARGETS

Name	MD [ft]	TVD [ft]	North [ft]	East [ft]	Grid East [US ft]	Grid North [US ft]	Latitude	Longitude	Shape
STATE SEVENTY HOLES A11-E14-3HNC 1/2 SECTION 3		0.00	0.40	-8.36	3328955.94	1371680.59	40°20'51.558"N	104°19'11.100"W	polygon
STATE SEVENTY HOLES A11-E14-3HNB TARGET 1		6251.00	-85.57	-300.20	3328665.28	1371590.74	40°20'50.708"N	104°19'14.869"W	point
STATE SEVENTY HOLES A11-E14-3HNC BHL REV-1 From Plat (470'FSL & 329'FWL,SEC.3)		6251.00	-4466.72	-45.46	3328978.30	1367213.56	40°20'07.415"N	104°19'11.579"W	point
STATE SEVENTY HOLES A11-E14-3HNC HARDLINE (460'SETBACK FNL/FSL)		6251.00	0.40	-8.36	3328955.94	1371680.59	40°20'51.558"N	104°19'11.100"W	polygon

## WELLPATH COMPOSITION -

Ref Wellbore: STATE SEVENTY HOLES A11-E14-3HNC AWB      Ref Wellpath: STATE SEVENTY HOLES A11-E14-3HNC AWP

Start MD [ft]	End MD [ft]	Positional Uncertainty Model	Log Name/Comment	Wellbore
0.00	6566.00	NaviTrak (MagCorr)	BHI/Navitrak MWD 8.75" Hole <17'-6556'>	STATE SEVENTY HOLES A11-E14-3HNC AWB
6566.00	10869.00	NaviTrak (Standard)	BHI/Navitrak MWD 6.125" Hole <6637'-10869'>	STATE SEVENTY HOLES A11-E14-3HNC AWB
10869.00	10925.00	Blind Drilling (std)	Projection to bit	STATE SEVENTY HOLES A11-E14-3HNC AWB



**Actual Wellpath Report**  
STATE SEVENTY HOLES A11-E14-3HNC AWP  
Page 7 of 7



REFERENCE WELLPATH IDENTIFICATION			
Operator	BONANZA CREEK OIL COMPANY	Slot	SLOT#01 STATE SEVENTY HOLES A11-E14-3HNC (443'FNL & 635'FWL,SEC.3)
Area	COLORADO	Well	STATE SEVENTY HOLES A11-E14-3HNC
Field	WELD COUNTY	Wellbore	STATE SEVENTY HOLES A11-E14-3HNC AWP
Facility	SEC.03-T4N-R62W		

WELLPATH COMMENTS				
MD [ft]	Inclination [°]	Azimuth [°]	TVD [ft]	Comment
17.00	0.000	52.230	17.00	Tie on
10869.00	90.190	176.630	6234.75	Last BHI Survey
10925.00	90.190	176.630	6234.56	Projection to Bit