

BONANZA CREEK OIL COMPANY

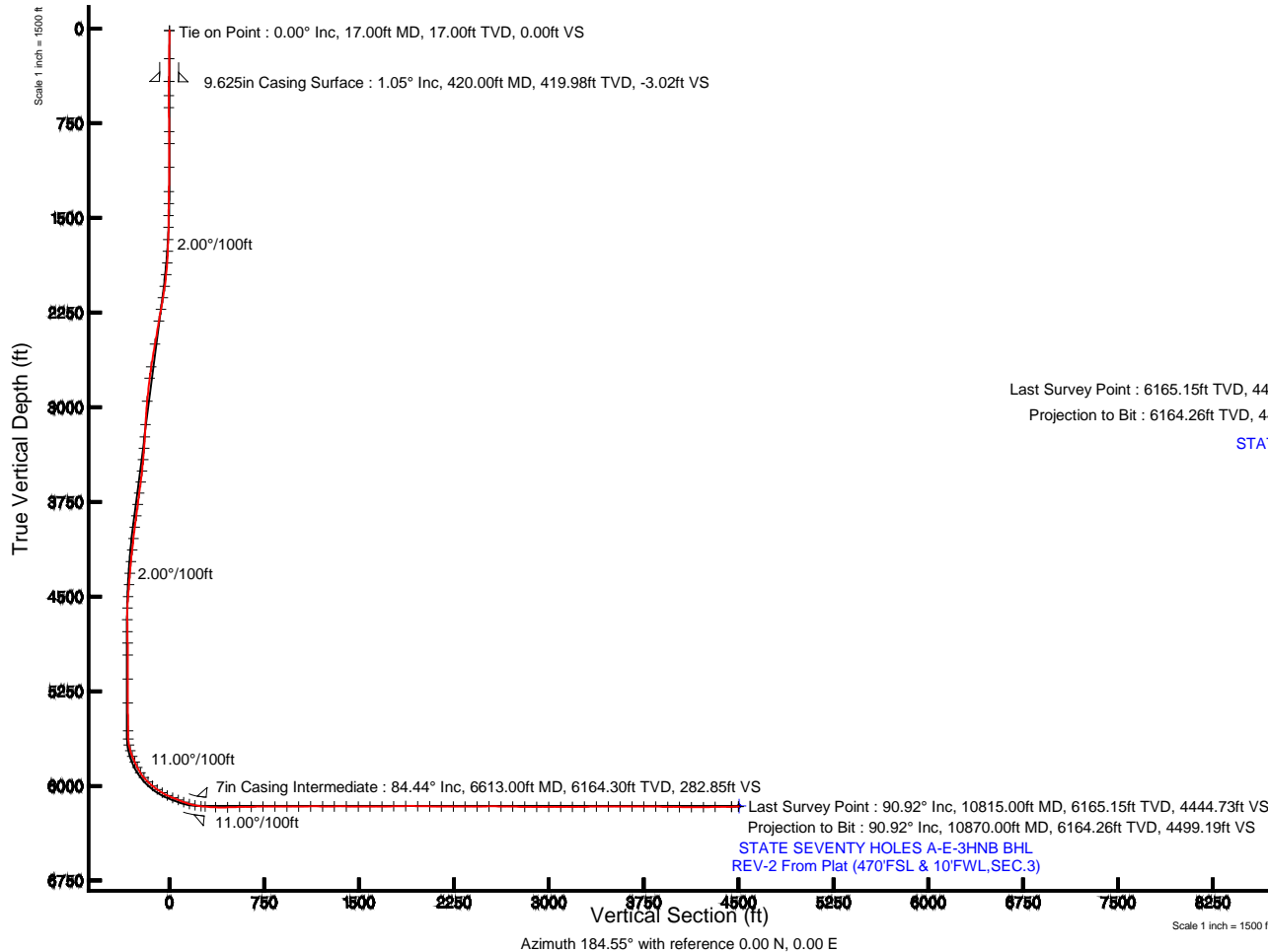
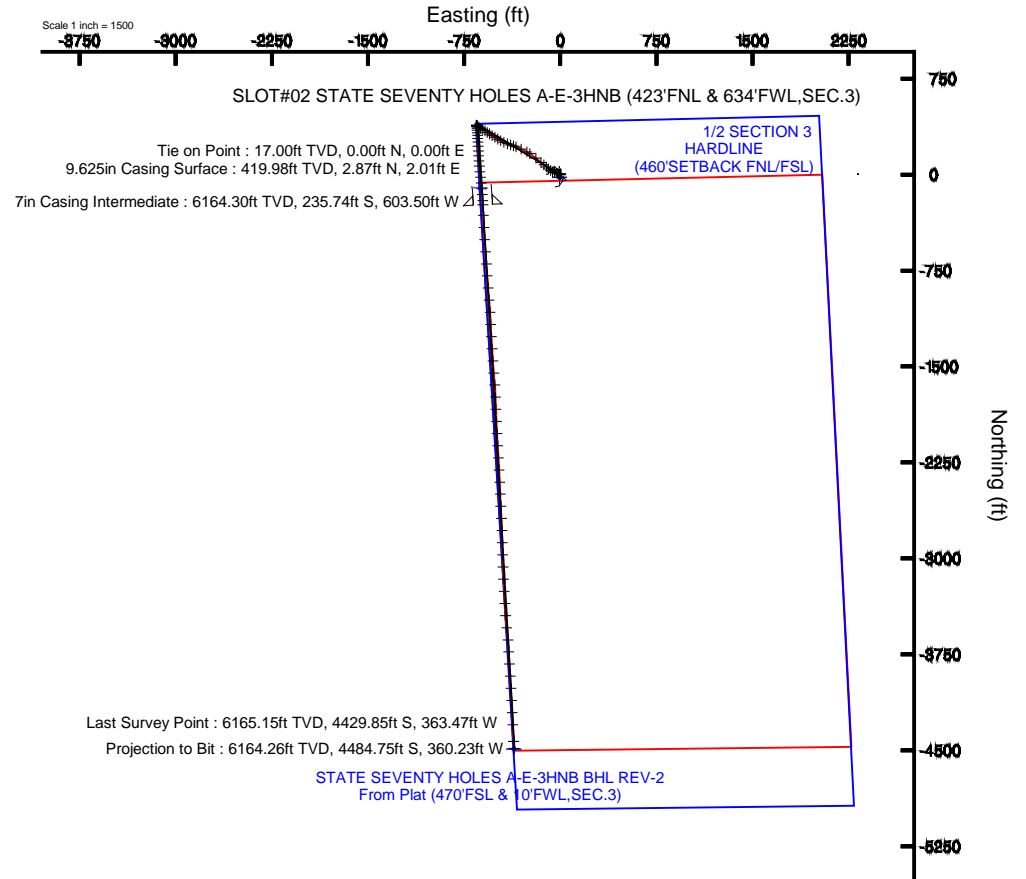
Location: COLORADO Slot: SLOT#02 STATE SEVENTY HOLES A-E-3HNB (423'FNL & 634'FWL,SEC.3)
Field: WELD COUNTY Well: STATE SEVENTY HOLES A-E-3HNB
Facility: SEC.03-T4N-R62W Wellbore: STATE SEVENTY HOLES A-E-3HNB PWB

Plot reference wellpath is STATE SEVENTY HOLES A-E-3HNB (REV-B.0) PWB

True vertical depths are referenced to RIG (RKB)	Grid System: NAD83 / Lambert Colorado SP, Northern Zone (501), US feet
Measured depths are referenced to RIG (RKB)	North Reference: True north
RIG (RKB) to Mean Sea Level: 4551 feet	Scale: True distance
Mean Sea Level to Mud line (At Slot: SLOT#02 STATE SEVENTY HOLES A-E-3HNB (423'FNL & 634'FWL,SEC.3)): 0 feet	Depths are in feet
Coordinates are in feet referenced to Slot	Created by: guenaler on 5/2/2014

Location Information

Facility Name				Grid East (US ft)	Grid North (US ft)	Latitude	Longitude
SEC.03-T4N-R62W				3328955.941	1371680.588	40°20'51.556"N	104°19'11.100"W
Slot	Local N (ft)	Local E (ft)	Grid East (US ft)	Grid North (US ft)	Latitude	Longitude	
SLOT#02 STATE SEVENTY HOLES A-E-3HNB (423'FNL & 634'FWL,SEC.3)	20.04	5.57	3328961.248	1371700.696	40°20'51.756"N	104°19'11.028"W	
RIG (RKB) to Mudline (At Slot: SLOT#02 STATE SEVENTY HOLES A-E-3HNB (423'FNL & 634'FWL,SEC.3))						455 ft	
Mean Sea Level to Mud line (At Slot: SLOT#02 STATE SEVENTY HOLES A-E-3HNB (423'FNL & 634'FWL,SEC.3))						0 ft	
RIG (RKB) to Mean Sea Level						455 ft	



BGGM (1945.0 to 2015.0) Dip: 66.97° Field: 52782 nT
Magnetic North is 8.29 degrees East of True North (at 3/10/2014)

To correct azimuth from Magnetic to True add 8.29 degrees



Actual Wellpath Report

STATE SEVENTY HOLES A-E-3HNB AWP

Page 1 of 7



REFERENCE WELLPATH IDENTIFICATION			
Operator	BONANZA CREEK OIL COMPANY	Slot	SLOT#02 STATE SEVENTY HOLES A-E-3HNB (423'FNL & 634'FWL,SEC.3)
Area	COLORADO	Well	STATE SEVENTY HOLES A-E-3HNB
Field	WELD COUNTY	Wellbore	STATE SEVENTY HOLES A-E-3HNB AWP
Facility	SEC.03-T4N-R62W		

REPORT SETUP INFORMATION			
Projection System	NAD83 / Lambert Colorado SP, Northern Zone (501), US feet	Software System	WellArchitect® 4.0.0
North Reference	True	User	Guenaler
Scale	0.999958	Report Generated	5/2/2014 at 1:09:36 PM
Convergence at slot	n/a	Database/Source file	WA_Denver/STATE_SEVENTY_HOLES_A-E-3HNB_AWP.xml

WELLPATH LOCATION						
	Local coordinates		Grid coordinates		Geographic coordinates	
	North[ft]	East[ft]	Easting[US ft]	Northing[US ft]	Latitude	Longitude
Slot Location	20.04	5.57	3328961.25	1371700.70	40°20'51.756"N	104°19'11.028"W
Facility Reference Pt			3328955.94	1371680.59	40°20'51.558"N	104°19'11.100"W
Field Reference Pt			3327718.19	1377782.99	40°21'52.020"N	104°19'26.040"W

WELLPATH DATUM			
Calculation method	Minimum curvature	RIG (RKB) to Facility Vertical Datum	4551.00ft
Horizontal Reference Pt	Slot	RIG (RKB) to Mean Sea Level	4551.00ft
Vertical Reference Pt	RIG (RKB)	RIG (RKB) to Mud Line at Slot (SLOT#02 STATE SEVENTY HOLES A-E-3HNB (423'FNL & 634'FWL,SEC.3))	4551.00ft
MD Reference Pt	RIG (RKB)	Section Origin	N 0.00, E 0.00 ft
Field Vertical Reference	Mean Sea Level	Section Azimuth	184.55°



Actual Wellpath Report

STATE SEVENTY HOLES A-E-3HNB AWP

Page 2 of 7



REFERENCE WELLPATH IDENTIFICATION			
Operator	BONANZA CREEK OIL COMPANY	Slot	SLOT#02 STATE SEVENTY HOLES A-E-3HNB (423'FNL & 634'FWL,SEC.3)
Area	COLORADO	Well	STATE SEVENTY HOLES A-E-3HNB
Field	WELD COUNTY	Wellbore	STATE SEVENTY HOLES A-E-3HNB AWB
Facility	SEC.03-T4N-R62W		

WELLPATH DATA (113 stations) † = interpolated/extrapolated station										
MD [ft]	Inclination [°]	Azimuth [°]	TVD [ft]	Vert Sect [ft]	North [ft]	East [ft]	Latitude	Longitude	DLS [°/100ft]	Comments
0.00†	0.000	18.830	0.00	0.00	0.00	0.00	40°20'51.756"N	104°19'11.028"W	0.00	
17.00	0.000	18.830	17.00	0.00	0.00	0.00	40°20'51.756"N	104°19'11.028"W	0.00	Tie on Point
240.00	0.580	18.830	240.00	-1.09	1.07	0.36	40°20'51.767"N	104°19'11.023"W	0.26	
420.00	1.050	55.340	419.98	-3.02	2.87	2.01	40°20'51.784"N	104°19'11.002"W	0.38	
531.00	0.810	44.140	530.96	-4.27	4.01	3.40	40°20'51.796"N	104°19'10.984"W	0.27	
627.00	0.940	205.230	626.96	-4.05	3.78	3.53	40°20'51.793"N	104°19'10.982"W	1.80	
816.00	1.160	227.750	815.93	-1.21	1.10	1.46	40°20'51.767"N	104°19'11.009"W	0.25	
911.00	1.040	278.690	910.91	-0.57	0.58	-0.11	40°20'51.762"N	104°19'11.029"W	1.00	
1100.00	1.130	297.730	1099.88	-1.43	1.71	-3.45	40°20'51.773"N	104°19'11.073"W	0.20	
1291.00	1.050	308.160	1290.85	-3.14	3.66	-6.49	40°20'51.792"N	104°19'11.112"W	0.11	
1386.00	1.990	313.310	1385.81	-4.65	5.33	-8.38	40°20'51.809"N	104°19'11.136"W	1.00	
1481.00	3.540	279.750	1480.70	-5.95	6.96	-12.47	40°20'51.825"N	104°19'11.189"W	2.29	
1576.00	5.720	282.310	1575.39	-6.86	8.47	-19.99	40°20'51.840"N	104°19'11.286"W	2.30	
1672.00	8.060	288.300	1670.69	-9.10	11.60	-31.05	40°20'51.871"N	104°19'11.429"W	2.55	
1766.00	9.700	285.750	1763.56	-12.21	15.82	-44.93	40°20'51.912"N	104°19'11.608"W	1.79	
1861.00	10.340	298.630	1857.12	-17.24	22.08	-60.12	40°20'51.974"N	104°19'11.804"W	2.45	
1955.00	11.750	304.720	1949.38	-25.49	31.57	-75.39	40°20'52.068"N	104°19'12.002"W	1.94	
2050.00	13.570	310.920	2042.07	-36.97	44.38	-91.77	40°20'52.195"N	104°19'12.213"W	2.39	
2144.00	14.700	311.780	2133.23	-50.72	59.55	-108.99	40°20'52.344"N	104°19'12.436"W	1.22	
2239.00	17.190	310.920	2224.56	-66.34	76.78	-128.59	40°20'52.515"N	104°19'12.689"W	2.63	
2335.00	16.070	310.680	2316.55	-82.59	94.74	-149.39	40°20'52.692"N	104°19'12.957"W	1.17	
2525.00	17.030	308.810	2498.67	-113.76	129.32	-191.01	40°20'53.034"N	104°19'13.495"W	0.58	
2714.00	17.840	304.480	2679.00	-143.79	163.05	-236.45	40°20'53.367"N	104°19'14.082"W	0.81	
2809.00	16.130	297.460	2769.86	-156.19	177.38	-260.16	40°20'53.509"N	104°19'14.388"W	2.81	
2999.00	14.250	296.790	2953.21	-175.32	200.09	-304.46	40°20'53.733"N	104°19'14.960"W	0.99	
3189.00	12.230	287.100	3138.18	-188.55	216.55	-344.57	40°20'53.896"N	104°19'15.478"W	1.58	
3289.00	13.220	289.590	3235.72	-193.82	223.50	-365.47	40°20'53.965"N	104°19'15.748"W	1.13	
3382.00	15.270	290.610	3325.86	-199.97	231.38	-386.95	40°20'54.042"N	104°19'16.026"W	2.22	
3475.00	18.140	289.640	3414.92	-207.13	240.56	-412.06	40°20'54.133"N	104°19'16.350"W	3.10	
3569.00	18.410	293.890	3504.18	-215.85	251.49	-439.41	40°20'54.241"N	104°19'16.703"W	1.45	



Actual Wellpath Report

STATE SEVENTY HOLES A-E-3HNB AWP

Page 3 of 7



REFERENCE WELLPATH IDENTIFICATION			
Operator	BONANZA CREEK OIL COMPANY	Slot	SLOT#02 STATE SEVENTY HOLES A-E-3HNB (423'FNL & 634'FWL,SEC.3)
Area	COLORADO	Well	STATE SEVENTY HOLES A-E-3HNB
Field	WELD COUNTY	Wellbore	STATE SEVENTY HOLES A-E-3HNB AWP
Facility	SEC.03-T4N-R62W		

WELLPATH DATA (113 stations)										
MD [ft]	Inclination [°]	Azimuth [°]	TVD [ft]	Vert Sect [ft]	North [ft]	East [ft]	Latitude	Longitude	DLS [°/100ft]	Comments
3661.00	17.180	300.280	3591.79	-226.56	264.22	-464.43	40°20'54.367"N	104°19'17.026"W	2.51	
3753.00	16.600	300.560	3679.82	-238.23	277.76	-487.48	40°20'54.501"N	104°19'17.324"W	0.64	
3847.00	15.780	300.340	3770.09	-249.68	291.04	-510.08	40°20'54.632"N	104°19'17.616"W	0.87	
3941.00	15.670	304.040	3860.58	-261.49	304.60	-531.63	40°20'54.766"N	104°19'17.894"W	1.07	
4033.00	14.080	303.450	3949.49	-273.01	317.73	-551.26	40°20'54.896"N	104°19'18.148"W	1.74	
4127.00	13.450	303.320	4040.79	-283.80	330.03	-569.94	40°20'55.017"N	104°19'18.389"W	0.67	
4220.00	13.480	303.120	4131.23	-294.19	341.90	-588.05	40°20'55.134"N	104°19'18.623"W	0.06	
4314.00	12.020	301.300	4222.91	-303.84	352.97	-605.59	40°20'55.244"N	104°19'18.850"W	1.61	
4408.00	10.520	301.910	4315.10	-312.19	362.59	-621.24	40°20'55.339"N	104°19'19.052"W	1.60	
4500.00	8.560	302.970	4405.82	-319.31	370.76	-634.12	40°20'55.420"N	104°19'19.218"W	2.14	
4595.00	6.860	313.580	4499.96	-326.25	378.52	-644.16	40°20'55.496"N	104°19'19.348"W	2.33	
4686.00	3.410	318.290	4590.59	-331.54	384.29	-649.90	40°20'55.553"N	104°19'19.422"W	3.82	
4779.00	1.870	240.230	4683.51	-332.60	385.60	-653.06	40°20'55.566"N	104°19'19.463"W	3.80	
4873.00	0.960	198.750	4777.48	-330.97	384.09	-654.64	40°20'55.551"N	104°19'19.483"W	1.40	
4965.00	0.810	140.910	4869.47	-329.75	382.86	-654.48	40°20'55.539"N	104°19'19.481"W	0.94	
5060.00	0.310	103.390	4964.47	-329.23	382.28	-653.80	40°20'55.533"N	104°19'19.472"W	0.63	
5250.00	0.150	181.470	5154.47	-328.90	381.91	-653.31	40°20'55.530"N	104°19'19.466"W	0.17	
5440.00	0.570	145.940	5344.46	-327.91	380.88	-652.79	40°20'55.520"N	104°19'19.459"W	0.24	
5659.00	0.610	141.420	5563.45	-326.21	379.06	-651.45	40°20'55.502"N	104°19'19.442"W	0.03	
5724.00	2.210	159.260	5628.43	-324.83	377.62	-650.79	40°20'55.487"N	104°19'19.433"W	2.52	
5771.00	9.920	172.740	5675.13	-320.04	372.75	-649.96	40°20'55.439"N	104°19'19.423"W	16.57	
5819.00	17.060	178.910	5721.78	-308.97	361.59	-649.30	40°20'55.329"N	104°19'19.414"W	15.15	
5866.00	22.860	176.310	5765.94	-293.06	345.58	-648.58	40°20'55.171"N	104°19'19.405"W	12.48	
5915.00	25.010	173.550	5810.72	-273.47	325.78	-646.80	40°20'54.975"N	104°19'19.382"W	4.95	
5962.00	26.290	177.610	5853.09	-253.38	305.51	-645.25	40°20'54.775"N	104°19'19.362"W	4.62	
6011.00	32.110	176.710	5895.85	-229.69	281.64	-644.05	40°20'54.539"N	104°19'19.346"W	11.91	
6059.00	40.160	177.360	5934.58	-201.65	253.40	-642.61	40°20'54.260"N	104°19'19.328"W	16.79	
6106.00	46.860	175.920	5968.65	-169.62	221.12	-640.69	40°20'53.941"N	104°19'19.303"W	14.41	
6154.00	51.020	176.820	6000.17	-133.80	185.01	-638.40	40°20'53.584"N	104°19'19.273"W	8.78	
6201.00	55.880	177.490	6028.16	-96.37	147.31	-636.54	40°20'53.212"N	104°19'19.249"W	10.40	



Actual Wellpath Report

STATE SEVENTY HOLES A-E-3HNB AWP

Page 4 of 7



REFERENCE WELLPATH IDENTIFICATION			
Operator	BONANZA CREEK OIL COMPANY	Slot	SLOT#02 STATE SEVENTY HOLES A-E-3HNB (423'FNL & 634'FWL,SEC.3)
Area	COLORADO	Well	STATE SEVENTY HOLES A-E-3HNB
Field	WELD COUNTY	Wellbore	STATE SEVENTY HOLES A-E-3HNB AWP
Facility	SEC.03-T4N-R62W		

WELLPATH DATA (113 stations)										
MD [ft]	Inclination [°]	Azimuth [°]	TVD [ft]	Vert Sect [ft]	North [ft]	East [ft]	Latitude	Longitude	DLS [°/100ft]	Comments
6249.00	59.200	175.520	6053.92	-56.28	106.89	-634.06	40°20'52.812"N	104°19'19.217"W	7.73	
6295.00	64.390	174.680	6075.65	-16.30	66.52	-630.59	40°20'52.413"N	104°19'19.172"W	11.40	
6343.00	68.350	174.040	6094.89	26.97	22.76	-626.26	40°20'51.981"N	104°19'19.116"W	8.34	
6390.00	69.700	173.400	6111.71	70.07	-20.86	-621.46	40°20'51.550"N	104°19'19.054"W	3.14	
6438.00	69.540	173.420	6128.43	114.22	-65.56	-616.30	40°20'51.108"N	104°19'18.988"W	0.34	
6485.00	74.040	175.200	6143.11	158.14	-109.97	-611.88	40°20'50.669"N	104°19'18.931"W	10.23	
6533.00	80.240	175.530	6153.79	204.32	-156.59	-608.10	40°20'50.209"N	104°19'18.882"W	12.93	
6580.00	82.930	177.110	6160.67	250.33	-202.98	-605.12	40°20'49.750"N	104°19'18.843"W	6.62	
6697.00	88.280	177.550	6169.63	366.02	-319.47	-599.69	40°20'48.599"N	104°19'18.773"W	4.59	
6792.00	91.450	176.890	6169.85	460.23	-414.34	-595.08	40°20'47.661"N	104°19'18.714"W	3.41	
6887.00	91.790	176.180	6167.17	554.26	-509.13	-589.34	40°20'46.725"N	104°19'18.639"W	0.83	
6981.00	90.430	175.860	6165.35	647.20	-602.89	-582.82	40°20'45.798"N	104°19'18.555"W	1.49	
7076.00	91.360	175.920	6163.86	741.11	-697.63	-576.01	40°20'44.862"N	104°19'18.467"W	0.98	
7171.00	89.630	175.770	6163.04	835.01	-792.37	-569.13	40°20'43.926"N	104°19'18.378"W	1.83	
7266.00	89.940	175.360	6163.40	928.84	-887.09	-561.78	40°20'42.990"N	104°19'18.283"W	0.54	
7361.00	90.310	175.170	6163.19	1022.60	-981.76	-553.94	40°20'42.054"N	104°19'18.182"W	0.44	
7456.00	90.500	176.700	6162.52	1116.52	-1076.52	-547.21	40°20'41.118"N	104°19'18.095"W	1.62	
7551.00	89.230	176.890	6162.74	1210.65	-1171.37	-541.90	40°20'40.181"N	104°19'18.026"W	1.35	
7646.00	90.930	177.170	6162.61	1304.83	-1266.24	-536.98	40°20'39.243"N	104°19'17.963"W	1.81	
7741.00	89.070	175.720	6162.61	1398.87	-1361.05	-531.09	40°20'38.306"N	104°19'17.887"W	2.48	
7836.00	89.750	176.670	6163.59	1492.86	-1455.83	-524.78	40°20'37.370"N	104°19'17.805"W	1.23	
7931.00	90.370	175.920	6163.49	1586.87	-1550.63	-518.64	40°20'36.433"N	104°19'17.726"W	1.02	
8026.00	90.060	174.750	6163.13	1680.65	-1645.31	-510.92	40°20'35.497"N	104°19'17.626"W	1.27	
8121.00	91.090	178.080	6162.18	1774.67	-1740.11	-504.98	40°20'34.561"N	104°19'17.550"W	3.67	
8216.00	91.180	177.880	6160.30	1869.03	-1835.03	-501.63	40°20'33.623"N	104°19'17.506"W	0.23	
8311.00	88.640	177.090	6160.45	1963.30	-1929.93	-497.46	40°20'32.685"N	104°19'17.452"W	2.80	
8406.00	89.010	177.270	6162.39	2057.49	-2024.79	-492.79	40°20'31.747"N	104°19'17.392"W	0.43	
8501.00	89.100	176.170	6163.96	2151.59	-2119.62	-487.35	40°20'30.810"N	104°19'17.322"W	1.16	
8595.00	90.650	176.700	6164.17	2244.65	-2213.44	-481.51	40°20'29.883"N	104°19'17.246"W	1.74	
8690.00	90.090	177.360	6163.55	2338.83	-2308.31	-476.59	40°20'28.946"N	104°19'17.183"W	0.91	



Actual Wellpath Report

STATE SEVENTY HOLES A-E-3HNB AWP

Page 5 of 7



REFERENCE WELLPATH IDENTIFICATION			
Operator	BONANZA CREEK OIL COMPANY	Slot	SLOT#02 STATE SEVENTY HOLES A-E-3HNB (423'FNL & 634'FWL,SEC.3)
Area	COLORADO	Well	STATE SEVENTY HOLES A-E-3HNB
Field	WELD COUNTY	Wellbore	STATE SEVENTY HOLES A-E-3HNB AWP
Facility	SEC.03-T4N-R62W		

WELLPATH DATA (113 stations)										
MD [ft]	Inclination [°]	Azimuth [°]	TVD [ft]	Vert Sect [ft]	North [ft]	East [ft]	Latitude	Longitude	DLS [°/100ft]	Comments
8785.00	90.280	177.410	6163.25	2433.09	-2403.21	-472.25	40°20'28.008"N	104°19'17.127"W	0.21	
8880.00	90.620	177.240	6162.50	2527.33	-2498.10	-467.82	40°20'27.070"N	104°19'17.069"W	0.40	
8975.00	88.770	177.210	6163.01	2621.55	-2592.99	-463.22	40°20'26.133"N	104°19'17.010"W	1.95	
9069.00	89.190	177.430	6164.68	2714.79	-2686.87	-458.83	40°20'25.205"N	104°19'16.953"W	0.50	
9164.00	90.220	178.190	6165.17	2809.13	-2781.79	-455.20	40°20'24.267"N	104°19'16.906"W	1.35	
9260.00	88.890	178.580	6165.91	2904.57	-2877.75	-452.49	40°20'23.319"N	104°19'16.871"W	1.44	
9355.00	89.690	177.520	6167.09	2998.95	-2972.69	-449.26	40°20'22.381"N	104°19'16.830"W	1.40	
9450.00	90.710	178.570	6166.76	3093.34	-3067.63	-446.02	40°20'21.442"N	104°19'16.788"W	1.54	
9545.00	90.220	176.830	6165.99	3187.65	-3162.55	-442.20	40°20'20.505"N	104°19'16.739"W	1.90	
9640.00	90.490	176.550	6165.40	3281.76	-3257.38	-436.72	40°20'19.567"N	104°19'16.668"W	0.41	
9735.00	91.260	177.550	6163.95	3375.93	-3352.25	-431.83	40°20'18.630"N	104°19'16.605"W	1.33	
9830.00	89.810	175.370	6163.06	3469.97	-3447.05	-425.97	40°20'17.693"N	104°19'16.529"W	2.76	
9925.00	90.060	173.380	6163.17	3563.48	-3541.59	-416.65	40°20'16.759"N	104°19'16.408"W	2.11	
10020.00	89.510	175.840	6163.53	3657.04	-3636.16	-407.73	40°20'15.824"N	104°19'16.293"W	2.65	
10115.00	90.520	176.760	6163.50	3751.06	-3730.96	-401.60	40°20'14.888"N	104°19'16.214"W	1.44	
10210.00	88.670	176.640	6164.17	3845.16	-3825.80	-396.13	40°20'13.950"N	104°19'16.143"W	1.95	
10305.00	88.920	176.740	6166.17	3939.25	-3920.62	-390.65	40°20'13.013"N	104°19'16.073"W	0.28	
10400.00	89.420	176.670	6167.55	4033.35	-4015.45	-385.19	40°20'12.076"N	104°19'16.002"W	0.53	
10495.00	89.880	176.620	6168.13	4127.45	-4110.29	-379.63	40°20'11.139"N	104°19'15.930"W	0.49	
10590.00	90.280	177.320	6167.99	4221.62	-4205.15	-374.61	40°20'10.202"N	104°19'15.865"W	0.85	
10685.00	90.800	177.410	6167.10	4315.86	-4300.05	-370.24	40°20'09.264"N	104°19'15.809"W	0.56	
10815.00	90.920	176.620	6165.15	4444.73	-4429.85	-363.47	40°20'07.981"N	104°19'15.722"W	0.61	Last Survey Point
10870.00	90.920	176.620	6164.26	4499.19	-4484.75	-360.23	40°20'07.439"N	104°19'15.680"W	0.00	Projection to Bit



Actual Wellpath Report

STATE SEVENTY HOLES A-E-3HNB AWP

Page 6 of 7



REFERENCE WELLPATH IDENTIFICATION			
Operator	BONANZA CREEK OIL COMPANY	Slot	SLOT#02 STATE SEVENTY HOLES A-E-3HNB (423'FNL & 634'FWL,SEC.3)
Area	COLORADO	Well	STATE SEVENTY HOLES A-E-3HNB
Field	WELD COUNTY	Wellbore	STATE SEVENTY HOLES A-E-3HNB AWP
Facility	SEC.03-T4N-R62W		

HOLE & CASING SECTIONS -									
Ref Wellbore: STATE SEVENTY HOLES A-E-3HNB AWP					Ref Wellpath: STATE SEVENTY HOLES A-E-3HNB AWP				
String/Diameter	Start MD [ft]	End MD [ft]	Interval [ft]	Start TVD [ft]	End TVD [ft]	Start N/S [ft]	Start E/W [ft]	End N/S [ft]	End E/W [ft]
9.625in Casing Surface	17.00	420.00	403.00	17.00	419.98	0.00	0.00	2.87	2.01
7in Casing Intermediate	17.00	6613.00	6596.00	17.00	6164.30	0.00	0.00	-235.74	-603.50

TARGETS									
Name	MD [ft]	TVD [ft]	North [ft]	East [ft]	Grid East [US ft]	Grid North [US ft]	Latitude	Longitude	Shape
STATE SEVENTY HOLES A11-E14-3HNC 1/2 SECTION 3		0.00	-20.04	-5.57	3328955.94	1371680.59	40°20'51.558"N	104°19'11.100"W	polygon
STATE SEVENTY HOLES A-E-3HNB BHL REV-2 From Plat (470'FSL & 10'FWL,SEC.3)		6160.00	-4489.37	-362.15	3328658.90	1367207.10	40°20'07.393"N	104°19'15.704"W	point
STATE SEVENTY HOLES A-E-3HNB BHL REV-1 From Plat (470'FSL & 10'FWL,SEC.3)		6251.00	-4489.37	-362.15	3328658.90	1367207.10	40°20'07.393"N	104°19'15.704"W	point
STATE SEVENTY HOLES A-E-3HNB TARGET		6251.00	-104.18	-624.10	3328338.62	1371588.22	40°20'50.726"N	104°19'19.088"W	point
STATE SEVENTY HOLES A11-E14-3HNC HARDLINE (460'SETBACK FNL/FSL)		6251.00	-20.04	-5.57	3328955.94	1371680.59	40°20'51.558"N	104°19'11.100"W	polygon

WELLPATH COMPOSITION -			
Ref Wellbore: STATE SEVENTY HOLES A-E-3HNB AWP		Ref Wellpath: STATE SEVENTY HOLES A-E-3HNB AWP	
Start MD [ft]	End MD [ft]	Positional Uncertainty Model	Log Name/Comment
17.00	6580.00	NaviTrak (Standard)	BHI/Navitrak MWD 8.75" Hole <17'-6580'>
6580.00	10815.00	NaviTrak (Standard)	BHI/Navitrak MWD 6.125" Hole <6697'-10815'>
10815.00	10870.00	Blind Drilling (std)	Projection to bit



Actual Wellpath Report
STATE SEVENTY HOLES A-E-3HNB AWP
Page 7 of 7



REFERENCE WELLPATH IDENTIFICATION			
Operator	BONANZA CREEK OIL COMPANY	Slot	SLOT#02 STATE SEVENTY HOLES A-E-3HNB (423'FNL & 634'FWL,SEC.3)
Area	COLORADO	Well	STATE SEVENTY HOLES A-E-3HNB
Field	WELD COUNTY	Wellbore	STATE SEVENTY HOLES A-E-3HNB AWB
Facility	SEC.03-T4N-R62W		

WELLPATH COMMENTS				
MD [ft]	Inclination [°]	Azimuth [°]	TVD [ft]	Comment
17.00	0.000	18.830	17.00	Tie on Point
10815.00	90.920	176.620	6165.15	Last Survey Point
10870.00	90.920	176.620	6164.26	Projection to Bit