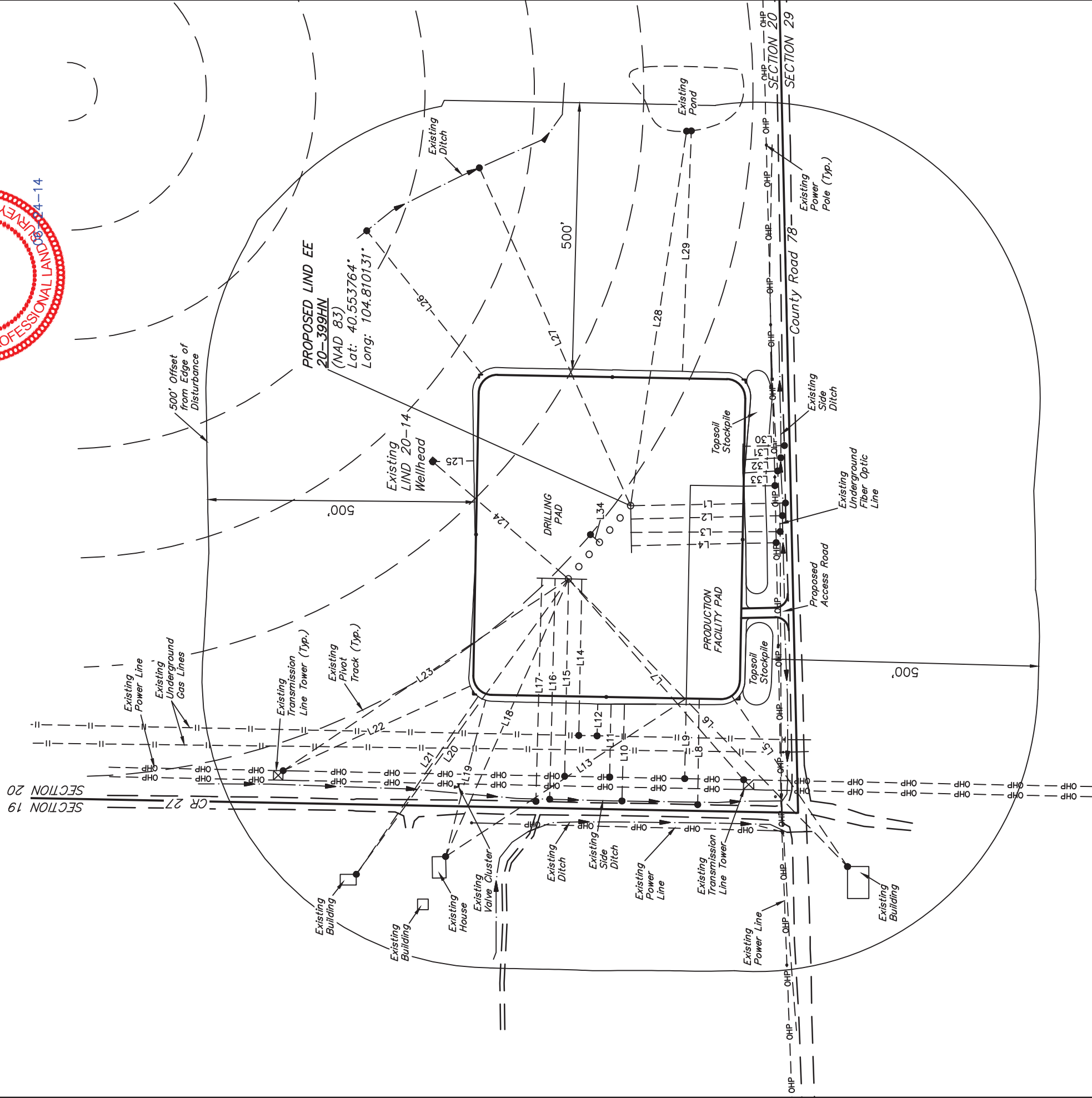
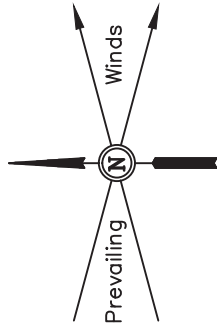


GREAT WESTERN OIL & GAS COMPANY

FIGURE #5

LOCATION DRAWING FOR
 LIND EE 20-399HN, 362HN, 359HC, 322HN, 322HN,
 282HN, 279HC & 242HN
 SECTION 20, T7N, R66W, 6th. P.M.
 SW 1/4 SW 1/4

SCALE: 1" = 200'
 DATE SURVEYED: 06-05-14
 SURVEYED BY: DARREN SHANKS
 DATE DRAWN: 08-02-13
 DRAWN BY: H.K.W.
 REV: 02-07-14 J.W.
 REV: 03-04-14 J.W.
 REV: 06-12-14 J.W.



PROPOSED LIND EE
 20-399HN
 (NAD 83)
 Lat: 40.553764°
 Long: 104.810131°

LINE TABLE	
LINE	DIRECTION LENGTH
L1	S01E 291'
L2	S01E 284'
L3	SOUTH 280'
L4	S01E 272'
L5	S56°W 387'
L6	S46°W 752'
L7	S49°W 500'
L8	N89°W 199'
L9	N89°W 150'
L10	N89°W 181'
L11	N89°W 137'
L12	N89°W 60'

LINE TABLE	
LINE	DIRECTION LENGTH
L13	N33°W 540'
L14	N89°W 293'
L15	N89°W 370'
L16	N89°W 414'
L17	N88°W 419'
L18	N66°W 569'
L19	N76°W 303'
L20	N54°W 682'
L21	N56°W 404'
L22	N24°W 386'
L23	N34°W 645'
L24	N41E 337'

LINE TABLE	
LINE	DIRECTION LENGTH
L25	N01°W 77'
L26	N51E 343'
L27	N66E 694'
L28	S81E 710'
L29	S88E 451'
L30	S01E 78'
L31	S03E 72'
L32	S03E 65'
L33	S01E 59'
L34	N40E 22'