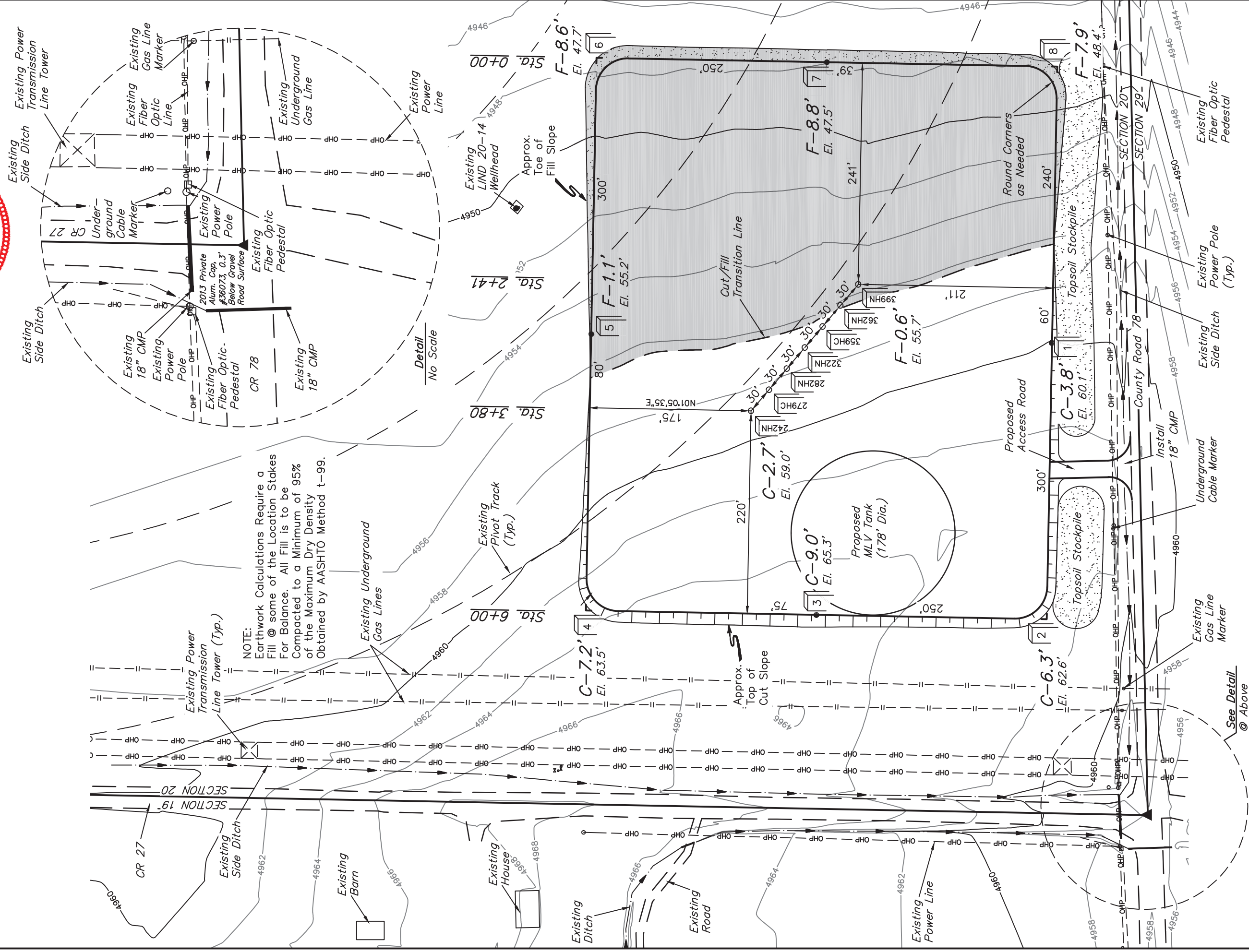
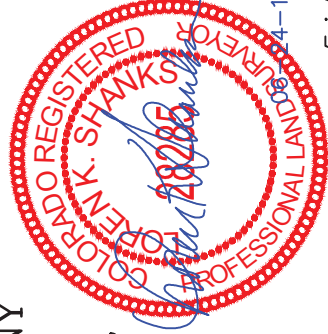


FIGURE #1

SCALE: 1" = 100'
DATE: 08-02-13
DRAWN BY: H.K.W.
REV: 01-28-14 H.K.W.
REV: 02-07-14 J.W.
REV: 03-04-14 J.W.
REV: 06-12-14 J.W.

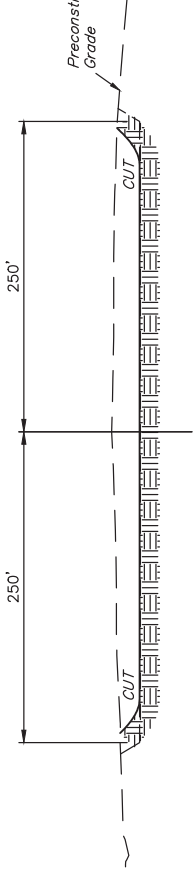


85 So. 200 East * Vernal, Utah 84078 * (435) 789-1017

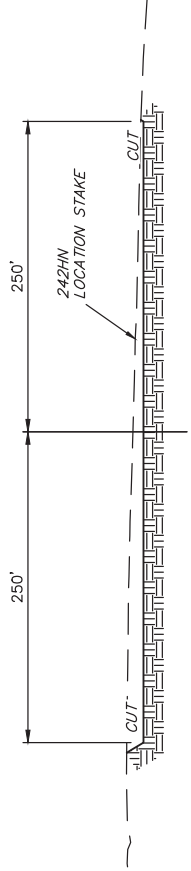
X-Section
Scale
1" = 100'

DATE: 08-02-13
DRAWN BY: H.K.W.
REV: 09-13-13 J.S.
REV: 02-07-14 J.W.
REV: 06-12-14 J.W.

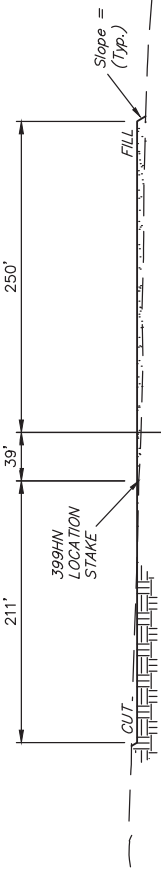
GREAT WESTERN OIL & GAS COMPANY
CONSTRUCTION LAYOUT CROSS SECTIONS FOR
LIND EE 20-399HN, 362HN, 359HC, 322HN,
282HN, 279HC & 242HN
SECTION 20, T7N, R66W, 6th. P.M.
SW 1/4 SW 1/4



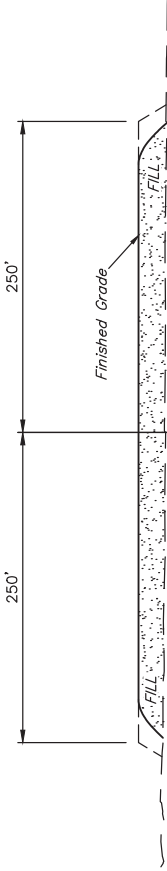
STA. 6+00



STA. 3+80



STA. 2+41



STA. 0+00

NOTE:
Topsoil should not be Stripped Below Finished Grade on Substructure Area.

* NOTE:
FILL QUANTITY INCLUDES 5% FOR COMPACTION

APPROXIMATE YARDAGES

(6") Topsoil Stripping Remaining Location = 5,910 Cu. Yds.
= 26,820 Cu. Yds.
TOTAL CUT = 32,730 CU. YDS.
FILL = 26,820 CU. YDS.

EXCESS MATERIAL Topsoil = 5,910 Cu. Yds.
EXCESS UNBALANCE = 5,910 Cu. Yds.
(After Interim Rehabilitation) = 0 Cu. Yds.

APPROXIMATE ACREAGE
WELL SITE DISTURBANCE =
ACCESS ROAD DISTURBANCE =
TOTAL =

UNINTAH ENGINEERING & I
85 Ss. 200 East • Yernal, Utah 8407