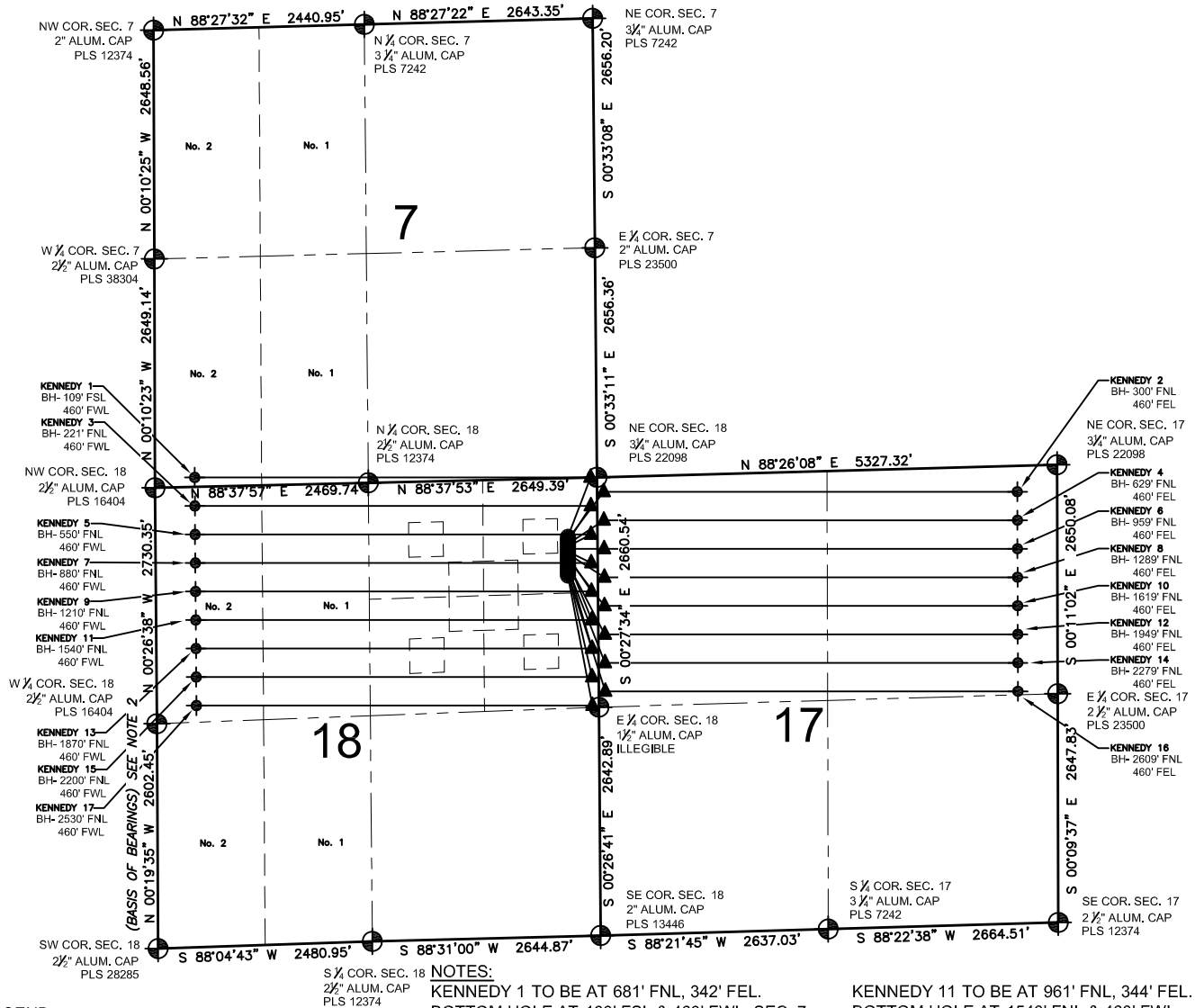


KENNEDY 18-D PAD MULTI-WELL PLAN

SECTION 7, 17, 18 TOWNSHIP 4 NORTH, RANGE 68 WEST, 6TH P.M.



LEGEND

- = EXISTING MONUMENT
- ▲ = LANDING POINT
- = PROPOSED WELL
- LP = LANDING POINT
- ◆ = BOTTOM HOLE
- BH = BOTTOM HOLE

NOTES:

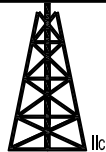
- THIS FIELD SURVEY CONFORMS TO THE MINIMUM STANDARDS SET BY THE C.O.G.C.C., RULE NO. 215
- BEARINGS AND DISTANCE SHOWN HEREON ARE GRID AND BASED ON THE COLORADO STATE PLANE COORDINATE SYSTEM, NAD 83/2011 BETWEEN MONUMENTS AS LABELED HEREON AND ELEVATIONS SHOWN ARE NAVD 88, AS DERIVED BY GPS OBSERVATIONS.
- GRID DISTANCES ARE SHOWN, AS MEASURED IN THE FIELD, WITH TIES TO WELLS MEASURED PERPENDICULAR TO SECTION LINES.

NOTES:

- KENNEDY 1 TO BE AT 681' FNL, 342' FEL. BOTTOM HOLE AT 109' FSL & 460' FWL, SEC. 7.
- KENNEDY 2 TO BE AT 709' FNL, 342' FEL. BOTTOM HOLE AT 300' FNL & 460' FEL, SEC. 17.
- KENNEDY 3 TO BE AT 737' FNL, 342' FEL. BOTTOM HOLE AT 221' FNL & 460' FWL.
- KENNEDY 4 TO BE AT 765' FNL, 342' FEL. BOTTOM HOLE AT 629' FNL & 460' FEL, SEC. 17.
- KENNEDY 5 TO BE AT 793' FNL, 342' FEL. BOTTOM HOLE AT 550' FNL & 460' FWL.
- KENNEDY 6 TO BE AT 821' FNL, 343' FEL. BOTTOM HOLE AT 959' FNL & 460' FEL, SEC. 17.
- KENNEDY 7 TO BE AT 849' FNL, 343' FEL. BOTTOM HOLE AT 880' FNL & 460' FWL.
- KENNEDY 8 TO BE AT 877' FNL, 343' FEL. BOTTOM HOLE AT 1289' FNL & 460' FEL, SEC. 17.
- KENNEDY 9 TO BE AT 905' FNL, 343' FEL. BOTTOM HOLE AT 1210' FNL & 460' FWL.
- KENNEDY 10 TO BE AT 933' FNL, 344' FEL. BOTTOM HOLE AT 1619' FNL & 460' FEL, SEC. 17.
- KENNEDY 11 TO BE AT 961' FNL, 344' FEL. BOTTOM HOLE AT 1540' FNL & 460' FWL.
- KENNEDY 12 TO BE AT 989' FNL, 344' FEL. BOTTOM HOLE AT 1949' FNL & 460' FEL, SEC. 17.
- KENNEDY 13 TO BE AT 1017' FNL, 344' FEL. BOTTOM HOLE AT 1870' FNL & 460' FWL.
- KENNEDY 14 TO BE AT 1045' FNL, 344' FEL. BOTTOM HOLE AT 2279' FNL & 460' FEL, SEC. 17.
- KENNEDY 15 TO BE AT 1073' FNL, 345' FEL. BOTTOM HOLE AT 2200' FNL & 460' FWL.
- KENNEDY 16 TO BE AT 1101' FNL, 345' FEL. BOTTOM HOLE AT 2609' FNL & 460' FEL, SEC. 17.
- KENNEDY 17 TO BE AT 1129' FNL, 345' FEL. BOTTOM HOLE AT 2530' FNL & 460' FWL.

PREPARED BY:

PFS



Petroleum Field Services, LLC
7535 Hilltop Circle
Denver, CO 80229

EXTRACTION OIL & GAS

FIELD DATE:
06-26-14

DRAWING DATE:
07-02-14

BY: MDC
CHECKED: TJR

PAD NAME:
KENNEDY 18-D PAD

SURFACE LOCATION:
NE 1/4 NE 1/4, SEC. 18, T4N, R68W, 6TH P.M.
WELD COUNTY, COLORADO

