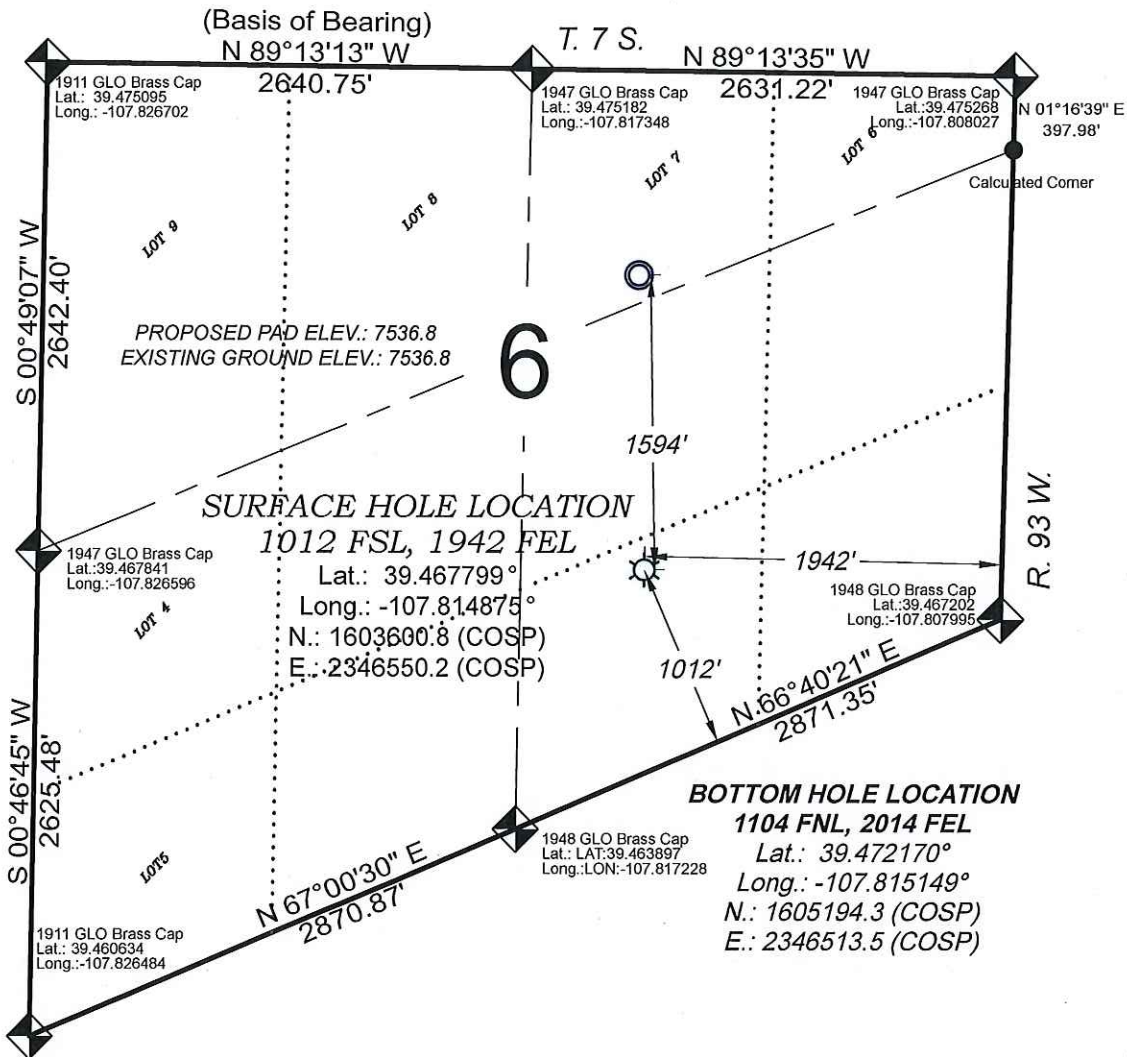


Federal RU 532-6

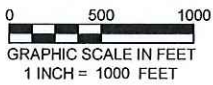


PROPOSED PAD ELEV.: 7536.8
EXISTING GROUND ELEV.: 7536.8





SURFACE HOLE LOCATION
1012 FSL, 1942 FEL
Lat.: 39.467799°
Long.: -107.814875°
N.: 1603600.8 (COSP)
E.: 2346550.2 (COSP)

BOTTOM HOLE LOCATION
1104 FNL, 2014 FEL
Lat.: 39.472170°
Long.: -107.815149°
N.: 1605194.3 (COSP)
E.: 2346513.5 (COSP)

THERE ARE NO VISIBLE IMPROVEMENTS WITHIN 500' OF THIS LOCATION



- LEGEND -

- FIELD LOCATED SECTION MONUMENTS AS DESCRIBED 
- FIELD SURVEYED WELL LOCATION 
- CALCULATED BOTTOM HOLE LOCATION 
- CALCULATED SECTION CORNER LOCATION 

SURVEYORS STATEMENT

I, MICHAEL J. LANGHORNE, A REGISTERED LAND SURVEYOR IN THE STATE OF COLORADO DO HEREBY CERTIFY THAT THE SURVEY SHOWN HEREON WAS PREPARED UNDER MY DIRECT SUPERVISION AND HAS BEEN STAKED ON THE GROUND AS SHOWN ON THE PLAT AND CHECKING THAT THIS MAP IS A TRUE REPRESENTATION THEREOF.

Michael J. Langhorne

MICHAEL J. LANGHORNE, COLORADO REGISTRATION NO. 36572 FOR AND ON BEHALF OF BOOKCLIFF SURVEY SERVICES, INC.

REFERENCES

- 1) RESURVEY T. 7 S., R. 93 W., 6th P.M (BLM PLAT)
- 2) U.S.G.S. QUAD: NORTH MAMM PEAK, CO

NOTES

- 1) ELEVATIONS BASED ON N.A. V.D. 1988 PUBLISHED COORDINATES.
- 2) LATITUDES AND LONGITUDES ARE BASE ON NAD 83, PUBLISHED COORDINATES
- 3) STATE PLANE COORDINATES ARE BASED ON COLORADO CENTRAL ZONE, U.S. SURVEY FEET.
- 4) ELEVATION MASK SET TO 15°
- 5) GPS OPERATOR J. KIRKPATRICK, OBSERVED A PDOP 2.9 ON SURVEY POINT NUMBER 94875.
- 6) SURFACE AND BOTTOM HOLE LOCATIONS ARE MEASURED 90° FROM SECTION LINES.

WELL LOCATION PLAT Prepared for:
WPXENERGY. WPX Energy Rocky Mountain, LLC

SW1/4 SE1/4, SECTION 6
T. 7 S., R. 93 W. of the 6th P.M.
GARFIELD COUNTY, COLORADO

136 East Third Street
Rifle, Colorado
81650 Ph. (970)
625-2720 Fax (970)
625-2773



BOOKCLIFF
Survey Services, Inc.

SURVEY DATE:	1/15/14
MAP DATE:	7/31/14
SCALE:	1" = 1000'
PLAT:	1 of 1
PROJECT:	2014 WPX