

**ANADARKO PETROLEUM CORP - EBUS
DO NOT MAIL - PO BOX 4995
THE WOODLANDS, Texas**

Badding 16N-35HZ

Majors 29

Post Job Summary **Cement Surface Casing**

Date Prepared: 11/29/2013
Version: 1

Service Supervisor: WHIPPLE, WESLEY

Submitted by: PRUDHOMME, JOSHUA

HALLIBURTON

HALLIBURTON

Wellbore Geometry

Job Tubulars					MD		Shoe Joint Length ft
Type	Description	Size in	ID in	Wt lbm/ft	Top ft	Bottom ft	
Casing	9 5/8" Surface Casing	9.63	8.921	36.00	0.00	1,328.00	43.00
Open Hole Section	13 1/2" Open Hole Section		13.500		0.00	1,328.00	0.00

HALLIBURTON

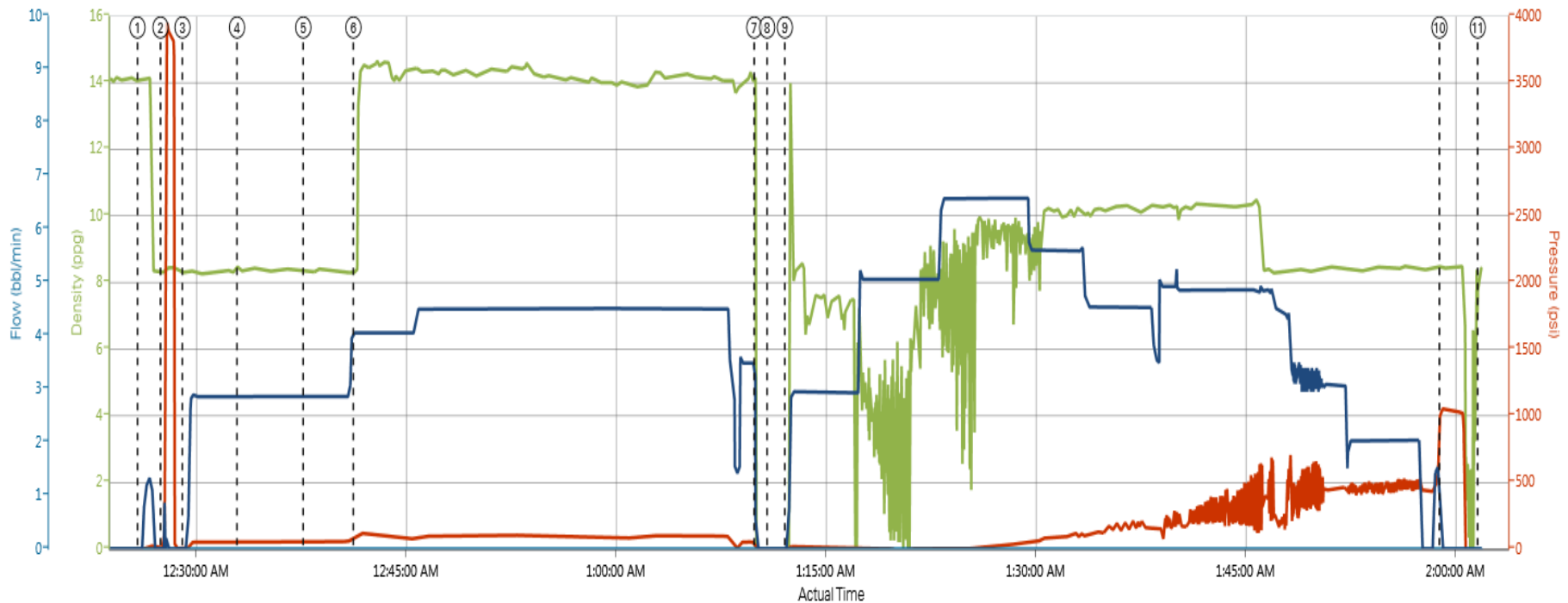
Pumping Schedule

Stage /Plug #	Fluid #	Fluid Type	Fluid Name	Surface Density lbm/gal	Avg Rate bbl/min	Surface Volume	Downhole Volume
1	1	Spacer	Fresh Water Spacer	8.33	3	10.0 bbl	10.0 bbl
1	2	Spacer	Mud Flush	8.4	3	12.0 bbl	12.0 bbl
1	3	Spacer	Fresh Water	8.33	3	10.0 bbl	10.0 bbl
1	4	Cement Slurry	SwiftCem B2	14.2	4.5	496.0 sacks	496.0 sacks

HALLIBURTON

Data Acquisition

Anadarko Badding 16N-35HZ



Cement Density (ppg) DS Pump Press (psi) DS Pump Rate (bbl/min) PS Pump Rate (bbl/min)

① Start Job 14.12;0;0;0	④ Pump Spacer 2 8.34;47.88;0;2.85	⑦ Shutdown -1.68;-3.91;0;0	⑩ Bump Plug 8.48;1055.28;0;0
② Test Lines 8.3;8.79;0;0	⑤ Pump Spacer 1 8.29;56.67;0;2.85	⑧ Drop Top Plug -1.7;-2.93;0;0	⑪ End Job n/a;n/a;n/a;n/a
③ Pump Spacer 1 8.23;2.93;0;0	⑥ Pump Cement 8.32;82.08;0;4.05	⑨ Pump Displacement -1.67;-3.91;0;0	

▲ HALLIBURTON | iCem® Service

Created: 2013-11-19 21:00:02, Version: 2.0.606

Edit

HALLIBURTON

Service Supervisor Reports

Job Log

Date/Time	Chart #	Activity Code	Pump Rate	Cum Vol	Pump		Pressure (psig)		Comments
11/19/2013 17:30		Call Out							CREW CALLED OUT BY ARS OFFICE @ 1730
11/19/2013 20:00		Crew Leave Yard							CREW PRE TRIPPED TRUCKS AND CHECKED CEMENT LEVELS IN PODS, HELD A PRE JOURNEY SAFETY MEETING AND TRAVELED TO LOCATION
11/19/2013 20:20		Arrive At Location							CREW ARRIVED ON LOCATION, MET WITH COMPANY REP, RIG WAS STILL RUNNING CASING
11/19/2013 20:40		Rig-Up Equipment							CREW HELD A PRE RIG UP SAFETY HUDDLE AND HAZARD HUNT. COMMENCED RIG UP OF BULK AND PUMPING EQUIPMENT
11/19/2013 23:00		Casing on Bottom							CASING WAS SET ON BOTTOM @2300
11/20/2013 00:01		Safety Meeting							HELD A PRE JOB SAFETY MEETING WITH ALL HANDS ON LOCATION TO DISCUSS JOB PROCESS AND PROCEDURES
11/20/2013 00:25		Start Job							
11/20/2013 00:27		Test Lines						3000.0	PRESSURE TESTED PUMPS AND LINES TO 3000PSI, FOUND NO LEAKS AND PRESSURE HELD
11/20/2013 00:29		Pump Spacer 1	3	10				50.0	PUMPED FRESH WATER SPACER FROM FRAC TANK
11/20/2013 00:33		Pump Spacer 2	3	12				50.0	MIXED MUD FLUSH WITH FRESH WATER FROM FRA TANK
11/20/2013 00:37		Pump Spacer 1	3	10				60.0	PUMPED FRESH WATER FROM FRAC TANK
11/20/2013 00:41		Pump Cement	4.5	136.03				95.0	MIXED AND PUMPED 496SKS OF SWIFTCM @ 14.2 PPG
11/20/2013 01:09		Shutdown							
11/20/2013 01:10		Drop Top Plug							DROPPED TOP PLUG WITNESSED BY COMPANY REP
11/20/2013 01:12		Pump Displacement	5	99.3				158.0	PUMPED FRESH WATER DISPLACEMENT FROM FRAC TANK, RECIEVED 20BBLs OF CEMENT TO SURFACE
11/20/2013 01:59		Bump Plug							BUMPED PLUG AND TOOK 500PSI OVER FINAL PUMPING PRESSURE. HELD PRESSURE @1029
11/20/2013 02:00		Check Floats							RELEASE PRESSURE BACK TO PUMP TRUCK. RECIEVED BBL BACK TO SURFACE AND FLOATS HELD
11/20/2013 02:01		End Job							

The Road to Excellence Starts with Safety

Sold To #: 300466		Ship To #: 3198510		Quote #:		Sales Order #: 900889123	
Customer: ANADARKO PETROLEUM CORP - EBUS				Customer Rep: Case, Randy			
Well Name: Badding			Well #: 16N-35HZ		API/UWI #: 05-123-38338		
Field: WATTENBERG		City (SAP): FORT LUPTON		County/Parish: Weld		State: Colorado	
Contractor: Majors			Rig/Platform Name/Num: Majors 29				
Job Purpose: Cement Surface Casing							
Well Type: Development Well				Job Type: Cement Surface Casing			
Sales Person: PLIENESS, RYAN			Srvc Supervisor: WHIPPLE, WESLEY			MBU ID Emp #: 518611	

Job Personnel

HES Emp Name	Exp Hrs	Emp #	HES Emp Name	Exp Hrs	Emp #	HES Emp Name	Exp Hrs	Emp #
CORONADO, EDDIE	6.2	77772	NIELSON, BRANDON K	6.2	479703	TORREY, SPENCER Kenneth	6.2	549837
WHIPPLE, WESLEY Morgan	6.2	518611						

Equipment

HES Unit #	Distance-1 way	HES Unit #	Distance-1 way	HES Unit #	Distance-1 way	HES Unit #	Distance-1 way
11748359	10 mile	12010172	10 mile	NA	10 mile		

Job

Job Times

Formation Name	Formation Depth (MD)	Top	Bottom	Called Out	Date	Time	Time Zone
					19 - Nov - 2013	17:30	MST
Form Type			BHST	On Location	19 - Nov - 2013	20:20	MST
Job depth MD	1328. ft		Job Depth TVD	1328. ft	Job Started	20 - Nov - 2013	00:25
Water Depth			Wk Ht Above Floor	4. ft	Job Completed	20 - Nov - 2013	02:01
Perforation Depth (MD)	From		To		Departed Loc	20 - Nov - 2013	02:30

Well Data

Description	New / Used	Max pressure psig	Size in	ID in	Weight lbm/ft	Thread	Grade	Top MD ft	Bottom MD ft	Top TVD ft	Bottom TVD ft
13 1/2" Open Hole Section				13.5				.	1328.		
9 5/8" Surface Casing	Unknown		9.625	8.921	36.		J-55	.	1328.		
Treatment Fld		Conc		Inhibitor		Conc	Sand Type		Size		Qty

Fluid Data

Stage/Plug #: 1

Fluid #	Stage Type	Fluid Name	Qty	Qty uom	Mixing Density lbm/gal	Yield ft ³ /sk	Mix Fluid Gal/sk	Rate bbl/min	Total Mix Fluid Gal/sk
---------	------------	------------	-----	---------	------------------------	---------------------------	------------------	--------------	------------------------

1	Fresh Water Spacer		10.00	bbl	8.33			3	
2	Mud Flush		12.00	bbl	8.4			3	
3.5 lbm/bbl		MUD FLUSH III, 40 LB SACK (101633304)							
42 gal/bbl		MUD FLUSH III - SBM (528788)							
3	Fresh Water		10.00	bbl	8.33			3	
4	SwiftCem B2	SWIFTCEN (TM) SYSTEM (452990)	496.0	sacks	14.2	1.53	7.63	4.5	7.63
7.63 Gal		FRESH WATER							
Calculated Values		Pressures		Volumes					
Displacement		Shut In: Instant		Lost Returns		Cement Slurry		Pad	
Top Of Cement		5 Min		Cement Returns		20	Actual Displacement	99.3	Treatment
Frac Gradient		15 Min		Spacers		32	Load and Breakdown		Total Job
Rates									
Circulating		Mixing		Displacement		Avg. Job			
Cement Left In Pipe		Amount	43 ft	Reason	Shoe Joint				
Frac Ring # 1 @	ID	Frac ring # 2 @	ID	Frac Ring # 3 @	ID	Frac Ring # 4 @	ID		
The Information Stated Herein Is Correct				Customer Representative Signature					

