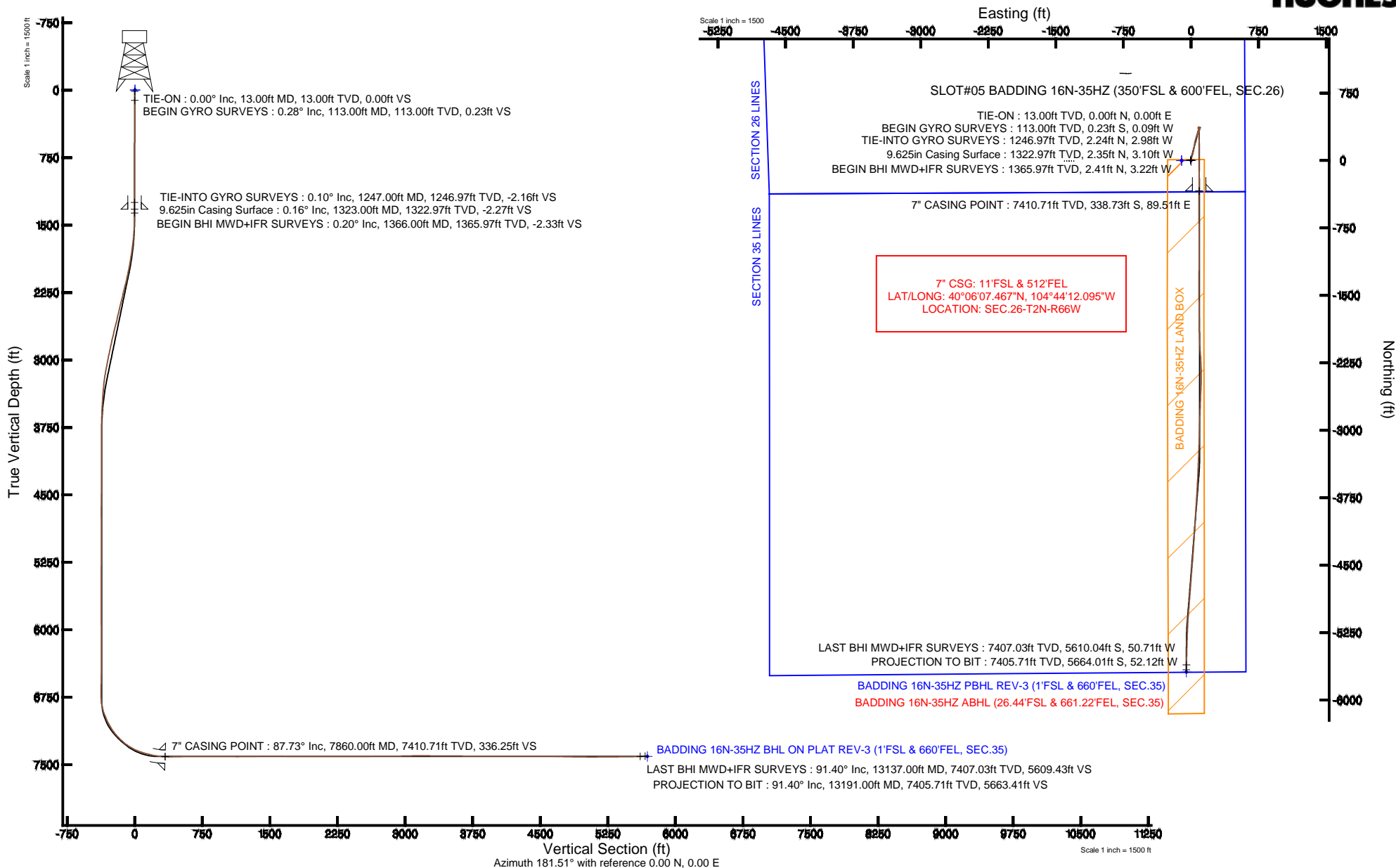


# KERR-MCGEE OIL & GAS ONSHORE LP

Location: COLORADO Slot: SLOT#05 BADDING 16N-35HZ (350'FSL & 600'FEL, SEC.26)  
Field: WELD COUNTY (KERR MCGEE) Well: BADDING 16N-35HZ  
Facility: SEC.26-T2N-R66W Wellbore: BADDING 16N-35HZ PWB

Plot reference wellpath is BADDING 16N-35HZ (REV-B.0) PWP

True vertical depths are referenced to ENSIGN 138 (13'KB) (RKB)	Grid System: NAD83 / Lambert Colorado SP, Northern Zone (501), US feet
Measured depths are referenced to ENSIGN 138 (13'KB) (RKB)	North Reference: True north
ENSGN 138 (13'KB) (RKB) to Mean Sea Level: 5128 feet	Scale: True distance
Mean Sea Level to Mud line (At Slot: SLOT#05 BADDING 16N-35HZ (350'FSL & 600'FEL, SEC.26)): 0 feet	Depths are in feet
Coordinates are in feet referenced to Slot	Created by: wilje02 on 4/2/2014





# Actual Wellpath Report

BADDING 16N-35HZ AWP

Page 1 of 6



## REFERENCE WELLPATH IDENTIFICATION

Operator	KERR-MCGEE OIL & GAS ONSHORE LP	Slot	SLOT#05 BADDING 16N-35HZ (350'FSL & 600'FEL, SEC.26)
Area	COLORADO	Well	BADDING 16N-35HZ
Field	WELD COUNTY (KERR MCGEE)	Wellbore	BADDING 16N-35HZ AWB
Facility	SEC.26-T2N-R66W		

## REPORT SETUP INFORMATION

Projection System	NAD83 / Lambert Colorado SP, Northern Zone (501), US feet	Software System	WellArchitect® 4.0.0
North Reference	True	User	Wilsjef02
Scale	0.99996	Report Generated	4/2/2014 at 12:45:33
Convergence at slot	n/a	Database/Source file	WellArchitectDB/BADDING_16N-35HZ_AWB.xml

## WELLPATH LOCATION

	Local coordinates		Grid coordinates		Geographic coordinates	
	North[ft]	East[ft]	Easting[US ft]	Northing[US ft]	Latitude	Longitude
Slot Location	0.30	104.13	3213428.05	1281286.87	40°06'10.814"N	104°44'13.247"W
Facility Reference Pt			3213323.93	1281285.67	40°06'10.811"N	104°44'14.587"W
Field Reference Pt			3197771.84	1268891.29	40°04'09.600"N	104°47'36.000"W

## WELLPATH DATUM

Calculation method	Minimum curvature	ENSIGN 138 (13'KB) (RKB) to Facility Vertical Datum	5128.00ft
Horizontal Reference Pt	Slot	ENSIGN 138 (13'KB) (RKB) to Mean Sea Level	5128.00ft
Vertical Reference Pt	ENSIGN 138 (13'KB) (RKB)	ENSIGN 138 (13'KB) (RKB) to Mud Line at Slot (SLOT#05 BADDING 16N-35HZ (350'FSL & 600'FEL, SEC.26))	5128.00ft
MD Reference Pt	ENSIGN 138 (13'KB) (RKB)	Section Origin	N 0.00, E 0.00 ft
Field Vertical Reference	Mean Sea Level	Section Azimuth	181.51°



# Actual Wellpath Report

BADDING 16N-35HZ AWP

Page 2 of 6



## REFERENCE WELLPATH IDENTIFICATION

Operator	KERR-MCGEE OIL & GAS ONSHORE LP	Slot	SLOT#05 BADDING 16N-35HZ (350'FSL & 600'FEL, SEC.26)
Area	COLORADO	Well	BADDING 16N-35HZ
Field	WELD COUNTY (KERR MCGEE)	Wellbore	BADDING 16N-35HZ AWB
Facility	SEC.26-T2N-R66W		

## WELLPATH DATA (105 stations) † = interpolated/extrapolated station

MD [ft]	Inclination [°]	Azimuth [°]	TVD [ft]	Vert Sect [ft]	North [ft]	East [ft]	Latitude	Longitude	DLS [°/100ft]	Comments
0.00†	0.000	202.010	0.00	0.00	0.00	0.00	40°06'10.814"N	104°44'13.247"W	0.00	
13.00	0.000	202.010	13.00	0.00	0.00	0.00	40°06'10.814"N	104°44'13.247"W	0.00	TIE-ON
113.00	0.280	202.010	113.00	0.23	-0.23	-0.09	40°06'10.812"N	104°44'13.248"W	0.28	BEGIN GYRO SURVEYS
213.00	0.210	109.750	213.00	0.52	-0.52	-0.01	40°06'10.809"N	104°44'13.247"W	0.36	
313.00	0.410	74.930	313.00	0.47	-0.48	0.51	40°06'10.809"N	104°44'13.240"W	0.27	
413.00	0.470	24.510	412.99	-0.01	-0.02	1.02	40°06'10.814"N	104°44'13.234"W	0.38	
513.00	0.550	11.490	512.99	-0.86	0.83	1.29	40°06'10.822"N	104°44'13.230"W	0.14	
613.00	0.630	287.870	612.99	-1.49	1.46	0.86	40°06'10.828"N	104°44'13.236"W	0.79	
713.00	0.480	259.240	712.98	-1.55	1.56	-0.07	40°06'10.829"N	104°44'13.248"W	0.31	
813.00	0.630	310.000	812.98	-1.81	1.83	-0.91	40°06'10.832"N	104°44'13.259"W	0.49	
913.00	0.660	300.350	912.97	-2.43	2.47	-1.82	40°06'10.838"N	104°44'13.270"W	0.11	
1013.00	0.220	209.900	1012.97	-2.53	2.60	-2.42	40°06'10.840"N	104°44'13.278"W	0.70	
1113.00	0.270	232.570	1112.97	-2.22	2.29	-2.70	40°06'10.837"N	104°44'13.282"W	0.11	
1213.00	0.090	306.440	1212.97	-2.11	2.19	-2.95	40°06'10.836"N	104°44'13.285"W	0.26	
1247.00	0.100	336.510	1246.97	-2.16	2.24	-2.98	40°06'10.836"N	104°44'13.285"W	0.15	TIE-INTO GYRO SURVEYS
1366.00	0.200	292.900	1365.97	-2.33	2.41	-3.22	40°06'10.838"N	104°44'13.288"W	0.12	BEGIN BHI MWD+IFR SURVEYS
1461.00	1.800	24.400	1460.95	-3.76	3.84	-2.75	40°06'10.852"N	104°44'13.282"W	1.91	
1553.00	3.400	16.900	1552.85	-7.72	7.76	-1.36	40°06'10.891"N	104°44'13.265"W	1.77	
1644.00	5.600	14.600	1643.57	-14.65	14.64	0.54	40°06'10.959"N	104°44'13.240"W	2.43	
1735.00	7.700	14.600	1733.95	-24.91	24.84	3.20	40°06'11.059"N	104°44'13.206"W	2.31	
1826.00	9.000	17.200	1823.99	-37.71	37.54	6.84	40°06'11.185"N	104°44'13.159"W	1.49	
1918.00	10.200	19.200	1914.70	-52.39	52.11	11.65	40°06'11.329"N	104°44'13.097"W	1.35	
2009.00	11.900	14.600	2004.01	-69.21	68.80	16.66	40°06'11.494"N	104°44'13.033"W	2.10	
2100.00	13.200	17.200	2092.83	-88.35	87.80	22.10	40°06'11.682"N	104°44'12.963"W	1.56	
2191.00	14.000	11.000	2181.28	-109.21	108.53	27.27	40°06'11.887"N	104°44'12.896"W	1.83	
2283.00	14.100	11.300	2270.53	-131.23	130.45	31.59	40°06'12.103"N	104°44'12.840"W	0.13	
2466.00	13.100	8.100	2448.40	-173.80	172.84	38.88	40°06'12.522"N	104°44'12.747"W	0.68	
2558.00	13.500	8.100	2537.93	-194.83	193.79	41.86	40°06'12.729"N	104°44'12.708"W	0.43	
2650.00	14.300	15.700	2627.25	-216.51	215.36	46.45	40°06'12.942"N	104°44'12.649"W	2.16	
2742.00	13.600	15.100	2716.53	-238.04	236.75	52.34	40°06'13.154"N	104°44'12.573"W	0.78	
2833.00	12.500	15.400	2805.18	-258.00	256.57	57.75	40°06'13.349"N	104°44'12.504"W	1.21	
2924.00	12.800	19.000	2893.97	-277.18	275.60	63.64	40°06'13.537"N	104°44'12.428"W	0.93	
3015.00	11.700	17.600	2982.90	-295.66	293.92	69.72	40°06'13.719"N	104°44'12.350"W	1.25	
3108.00	11.000	16.400	3074.08	-313.29	311.42	75.07	40°06'13.892"N	104°44'12.281"W	0.79	
3200.00	9.700	16.000	3164.58	-329.28	327.29	79.69	40°06'14.048"N	104°44'12.221"W	1.42	
3292.00	6.100	8.600	3255.70	-341.64	339.58	82.56	40°06'14.170"N	104°44'12.185"W	4.06	
3386.00	5.000	10.200	3349.25	-350.64	348.55	84.03	40°06'14.258"N	104°44'12.166"W	1.18	
3480.00	3.300	12.000	3443.00	-357.35	355.23	85.32	40°06'14.324"N	104°44'12.149"W	1.81	
3575.00	3.000	6.700	3537.86	-362.52	360.37	86.17	40°06'14.375"N	104°44'12.138"W	0.44	
3669.00	1.300	353.100	3631.79	-366.02	363.88	86.33	40°06'14.410"N	104°44'12.136"W	1.88	
3764.00	0.300	154.300	3726.78	-366.87	364.72	86.31	40°06'14.418"N	104°44'12.136"W	1.67	
3858.00	0.500	227.500	3820.78	-366.37	364.22	86.12	40°06'14.413"N	104°44'12.139"W	0.54	
3953.00	0.500	254.100	3915.78	-365.95	363.83	85.41	40°06'14.409"N	104°44'12.148"W	0.24	
4048.00	0.200	328.300	4010.78	-365.97	363.86	84.93	40°06'14.410"N	104°44'12.154"W	0.51	
4237.00	0.200	5.700	4199.78	-366.57	364.47	84.78	40°06'14.416"N	104°44'12.156"W	0.07	



# Actual Wellpath Report

BADDING 16N-35HZ AWP

Page 3 of 6



## REFERENCE WELLPATH IDENTIFICATION

Operator	KERR-MCGEE OIL & GAS ONSHORE LP	Slot	SLOT#05 BADDING 16N-35HZ (350'FSL & 600'FEL, SEC.26)
Area	COLORADO	Well	BADDING 16N-35HZ
Field	WELD COUNTY (KERR MCGEE)	Wellbore	BADDING 16N-35HZ AWB
Facility	SEC.26-T2N-R66W		

## WELLPATH DATA (105 stations) † = interpolated/extrapolated station

MD [ft]	Inclination [°]	Azimuth [°]	TVD [ft]	Vert Sect [ft]	North [ft]	East [ft]	Latitude	Longitude	DLS [°/100ft]	Comments
4426.00	0.400	318.000	4388.77	-367.38	365.28	84.38	40°06'14.424"N	104°44'12.161"W	0.16	
4615.00	1.400	12.000	4577.75	-370.13	368.03	84.41	40°06'14.451"N	104°44'12.161"W	0.64	
4709.00	0.200	174.200	4671.74	-371.10	368.99	84.67	40°06'14.460"N	104°44'12.157"W	1.69	
5181.00	0.200	277.200	5143.74	-370.36	368.28	83.94	40°06'14.453"N	104°44'12.167"W	0.07	
5371.00	0.500	339.100	5333.74	-371.16	369.09	83.31	40°06'14.461"N	104°44'12.175"W	0.23	
5843.00	0.800	115.300	5805.72	-371.73	369.61	85.56	40°06'14.467"N	104°44'12.146"W	0.26	
6320.00	2.700	101.100	6282.48	-368.52	366.02	99.59	40°06'14.431"N	104°44'11.965"W	0.41	
6415.00	0.600	2.300	6377.44	-368.64	366.09	101.81	40°06'14.432"N	104°44'11.937"W	3.00	
6605.00	1.600	16.000	6567.41	-372.21	369.63	102.58	40°06'14.467"N	104°44'11.927"W	0.54	
6699.00	1.300	8.500	6661.38	-374.54	371.95	103.10	40°06'14.490"N	104°44'11.920"W	0.38	
6794.00	2.000	195.100	6756.36	-373.99	371.41	102.83	40°06'14.484"N	104°44'11.924"W	3.47	
6888.00	12.100	193.000	6849.53	-362.72	360.20	100.18	40°06'14.374"N	104°44'11.958"W	10.75	
6983.00	20.700	193.500	6940.58	-336.49	334.12	94.00	40°06'14.116"N	104°44'12.037"W	9.05	
7078.00	26.300	185.300	7027.69	-299.02	296.80	88.14	40°06'13.747"N	104°44'12.113"W	6.81	
7173.00	33.700	175.700	7109.95	-251.71	249.47	88.17	40°06'13.279"N	104°44'12.112"W	9.26	
7267.00	42.600	176.700	7183.80	-193.95	191.59	91.96	40°06'12.707"N	104°44'12.064"W	9.49	
7362.00	49.900	179.800	7249.46	-125.49	123.06	93.94	40°06'12.030"N	104°44'12.038"W	8.04	
7457.00	58.200	180.400	7305.18	-48.68	46.22	93.79	40°06'11.271"N	104°44'12.040"W	8.75	
7551.00	69.100	180.800	7346.84	35.42	-37.88	92.89	40°06'10.440"N	104°44'12.052"W	11.60	
7598.00	71.800	180.900	7362.57	79.70	-82.16	92.23	40°06'10.002"N	104°44'12.060"W	5.75	
7646.00	74.100	180.600	7376.64	125.59	-128.05	91.63	40°06'09.549"N	104°44'12.068"W	4.83	
7693.00	76.700	180.700	7388.89	171.06	-173.52	91.12	40°06'09.099"N	104°44'12.074"W	5.54	
7741.00	79.800	180.200	7398.26	218.04	-220.51	90.75	40°06'08.635"N	104°44'12.079"W	6.54	
7788.00	82.700	180.800	7405.41	264.48	-266.95	90.34	40°06'08.176"N	104°44'12.084"W	6.30	
7822.00	86.200	180.600	7408.70	298.31	-300.79	89.93	40°06'07.842"N	104°44'12.090"W	10.31	
7860.00†	87.725	180.680	7410.71	336.25	-338.73	89.51	40°06'07.467"N	104°44'12.095"W	4.02	7" CASING POINT
7964.00	91.900	180.900	7411.05	440.22	-442.70	88.07	40°06'06.439"N	104°44'12.114"W	4.02	
8059.00	91.600	179.700	7408.15	535.15	-537.65	87.58	40°06'05.501"N	104°44'12.120"W	1.30	
8154.00	89.600	179.300	7407.15	630.09	-632.64	88.41	40°06'04.562"N	104°44'12.109"W	2.15	
8247.00	90.500	179.400	7407.07	723.02	-725.63	89.46	40°06'03.643"N	104°44'12.096"W	0.97	
8342.00	90.000	180.400	7406.66	817.98	-820.63	89.63	40°06'02.704"N	104°44'12.094"W	1.18	
8437.00	89.800	179.900	7406.82	912.95	-915.63	89.38	40°06'01.766"N	104°44'12.097"W	0.57	
8531.00	89.000	179.600	7407.81	1006.90	-1009.62	89.79	40°06'00.837"N	104°44'12.092"W	0.91	
8719.00	90.500	180.600	7408.63	1194.84	-1197.61	89.46	40°05'58.979"N	104°44'12.096"W	0.96	
8908.00	91.100	180.100	7405.99	1383.78	-1386.59	88.30	40°05'57.112"N	104°44'12.111"W	0.41	
9097.00	89.300	179.200	7405.33	1572.67	-1575.57	89.46	40°05'55.244"N	104°44'12.096"W	1.06	
9286.00	89.800	179.200	7406.81	1761.51	-1764.55	92.10	40°05'53.376"N	104°44'12.062"W	0.26	
9476.00	89.900	178.900	7407.31	1951.33	-1954.52	95.25	40°05'51.499"N	104°44'12.021"W	0.17	
9665.00	89.600	176.000	7408.14	2139.83	-2143.31	103.66	40°05'49.633"N	104°44'11.913"W	1.54	
9853.00	90.000	178.500	7408.79	2327.30	-2331.08	112.68	40°05'47.778"N	104°44'11.797"W	1.35	
10042.00	90.800	182.700	7407.47	2516.23	-2520.02	110.70	40°05'45.911"N	104°44'11.823"W	2.26	
10326.00	90.000	181.500	7405.49	2800.20	-2803.81	100.29	40°05'43.106"N	104°44'11.957"W	0.51	
10420.00	90.700	182.000	7404.92	2894.19	-2897.77	97.42	40°05'42.178"N	104°44'11.993"W	0.92	
10515.00	91.600	181.700	7403.01	2989.17	-2992.70	94.35	40°05'41.240"N	104°44'12.033"W	1.00	
10610.00	90.600	181.900	7401.19	3084.15	-3087.63	91.37	40°05'40.302"N	104°44'12.071"W	1.07	



# Actual Wellpath Report

BADDING 16N-35HZ AWP

Page 4 of 6



## REFERENCE WELLPATH IDENTIFICATION

Operator	KERR-MCGEE OIL & GAS ONSHORE LP	Slot	SLOT#05 BADDING 16N-35HZ (350'FSL & 600'FEL, SEC.26)
Area	COLORADO	Well	BADDING 16N-35HZ
Field	WELD COUNTY (KERR MCGEE)	Wellbore	BADDING 16N-35HZ AWB
Facility	SEC.26-T2N-R66W		

## WELLPATH DATA (105 stations)

MD [ft]	Inclination [°]	Azimuth [°]	TVD [ft]	Vert Sect [ft]	North [ft]	East [ft]	Latitude	Longitude	DLS [°/100ft]	Comments
10704.00	89.800	181.800	7400.86	3178.15	-3181.58	88.34	40°05'39.373"N	104°44'12.110"W	0.86	
10894.00	89.300	182.300	7402.35	3368.13	-3371.45	81.54	40°05'37.497"N	104°44'12.198"W	0.37	
11083.00	89.900	182.800	7403.67	3557.10	-3560.26	73.13	40°05'35.631"N	104°44'12.306"W	0.41	
11272.00	89.700	183.700	7404.33	3746.00	-3748.95	62.42	40°05'33.766"N	104°44'12.444"W	0.49	
11463.00	89.500	183.300	7405.66	3936.88	-3939.59	50.76	40°05'31.882"N	104°44'12.594"W	0.23	
11652.00	90.800	184.000	7405.17	4125.75	-4128.20	38.72	40°05'30.018"N	104°44'12.749"W	0.78	
11841.00	89.800	183.500	7404.18	4314.60	-4316.79	26.36	40°05'28.155"N	104°44'12.908"W	0.59	
12031.00	89.900	184.800	7404.68	4504.39	-4506.29	12.61	40°05'26.282"N	104°44'13.085"W	0.69	
12220.00	88.500	184.300	7407.31	4693.10	-4694.67	-2.38	40°05'24.421"N	104°44'13.278"W	0.79	
12409.00	88.700	184.300	7411.93	4881.82	-4883.08	-16.54	40°05'22.559"N	104°44'13.460"W	0.11	
12597.00	90.000	184.400	7414.07	5069.57	-5070.52	-30.80	40°05'20.706"N	104°44'13.643"W	0.69	
12787.00	90.700	181.700	7412.90	5259.48	-5260.23	-40.91	40°05'18.832"N	104°44'13.773"W	1.47	
12976.00	90.900	181.600	7410.27	5448.46	-5449.13	-46.35	40°05'16.965"N	104°44'13.843"W	0.12	
13137.00	91.400	181.500	7407.03	5609.43	-5610.04	-50.71	40°05'15.375"N	104°44'13.899"W	0.32	LAST BHI MWD+IFR SURVEYS
13191.00	91.400	181.500	7405.71	5663.41	-5664.01	-52.12	40°05'14.841"N	104°44'13.918"W	0.00	PROJECTION TO BIT

## HOLE & CASING SECTIONS - Ref Wellbore: BADDING 16N-35HZ AWB Ref Wellpath: BADDING 16N-35HZ AWP

String/Diameter	Start MD [ft]	End MD [ft]	Interval [ft]	Start TVD [ft]	End TVD [ft]	Start N/S [ft]	Start E/W [ft]	End N/S [ft]	End E/W [ft]
13.5in Open Hole	13.00	1323.00	1310.00	13.00	1322.97	0.00	0.00	2.35	-3.10
9.625in Casing Surface	13.00	1323.00	1310.00	13.00	1322.97	0.00	0.00	2.35	-3.10
8.75in Open Hole	1323.00	7870.00	6547.00	1322.97	7411.07	2.35	-3.10	-348.72	89.39
7in Casing Intermediate	13.00	7860.00	7847.00	13.00	7410.71	0.00	0.00	-338.73	89.51
6.125in Open Hole	7860.00	13191.00	5331.00	7410.71	7405.71	-338.73	89.51	-5664.01	-52.12



# Actual Wellpath Report

BADDING 16N-35HZ AWP

Page 5 of 6



## REFERENCE WELLPATH IDENTIFICATION

Operator	KERR-MCGEE OIL & GAS ONSHORE LP	Slot	SLOT#05 BADDING 16N-35HZ (350'FSL & 600'FEL, SEC.26)
Area	COLORADO	Well	BADDING 16N-35HZ
Field	WELD COUNTY (KERR MCGEE)	Wellbore	BADDING 16N-35HZ AWB
Facility	SEC.26-T2N-R66W		

## TARGETS

Name	MD [ft]	TVD [ft]	North [ft]	East [ft]	Grid East [US ft]	Grid North [US ft]	Latitude	Longitude	Shape
BADDING SECTION 26 LINES		-4.00	-0.30	-104.05	3213324.01	1281285.67	40°06'10.811"N	104°44'14.586"W	polygon
BADDING SECTION 35 LINES		-4.00	-0.30	-104.05	3213324.01	1281285.67	40°06'10.811"N	104°44'14.586"W	polygon
BADDING 16N-35HZ BHL ON PLAT REV-1 (1'FSL & 510'FEL, SEC.35)		7328.00	-5689.49	99.07	3213576.06	1275598.68	40°05'14.590"N	104°44'11.972"W	point
BADDING 16N-35HZ LAND BOX		7396.00	0.00	0.00	3213428.05	1281286.87	40°06'10.814"N	104°44'13.247"W	polygon
BADDING 16N-35HZ BHL ON PLAT REV-2 (1'FSL & 510'FEL, SEC.35)		7408.00	-5689.45	99.10	3213576.09	1275598.73	40°05'14.590"N	104°44'11.972"W	point
BADDING 16N-35HZ BHL ON PLAT REV-3 (1'FSL & 660'FEL, SEC.35)		7408.00	-5689.45	-50.90	3213426.10	1275597.43	40°05'14.590"N	104°44'13.902"W	point

## WELLPATH COMPOSITION - Ref Wellbore: BADDING 16N-35HZ AWB Ref Wellpath: BADDING 16N-35HZ AWP

Start MD [ft]	End MD [ft]	Positional Uncertainty Model	Log Name/Comment	Wellbore
13.00	1247.00	Generic gyro - continuous (Standard)	MS ENERGY SERVICES GYRO SURVEYS <113-1247>	BADDING 16N-35HZ AWB
1247.00	7822.00	NaviTrak (MAGCORR,IFR)	BHI MWD+IFR SURVEYS 8 3/4" HOLE <1366-7822>	BADDING 16N-35HZ AWB
7822.00	13137.00	NaviTrak (MAGCORR,IFR)	BHI MWD+IFR SURVEYS 6 1/8" HOLE <7964-13137>	BADDING 16N-35HZ AWB
13137.00	13191.00	Blind Drilling (std)	Projection to bit	BADDING 16N-35HZ AWB



# Actual Wellpath Report

BADDING 16N-35HZ AWP

Page 6 of 6



## REFERENCE WELLPATH IDENTIFICATION

Operator	KERR-MCGEE OIL & GAS ONSHORE LP	Slot	SLOT#05 BADDING 16N-35HZ (350'FSL & 600'FEL, SEC.26)
Area	COLORADO	Well	BADDING 16N-35HZ
Field	WELD COUNTY (KERR MCGEE)	Wellbore	BADDING 16N-35HZ AWB
Facility	SEC.26-T2N-R66W		

## WELLPATH COMMENTS

MD [ft]	Inclination [°]	Azimuth [°]	TVD [ft]	Comment
13.00	0.000	202.010	13.00	TIE-ON
113.00	0.280	202.010	113.00	BEGIN GYRO SURVEYS
1247.00	0.100	336.510	1246.97	TIE-INTO GYRO SURVEYS
1366.00	0.200	292.900	1365.97	BEGIN BHI MWD+IFR SURVEYS
7860.00	87.725	180.680	7410.71	7" CASING POINT
13137.00	91.400	181.500	7407.03	LAST BHI MWD+IFR SURVEYS
13191.00	91.400	181.500	7405.71	PROJECTION TO BIT