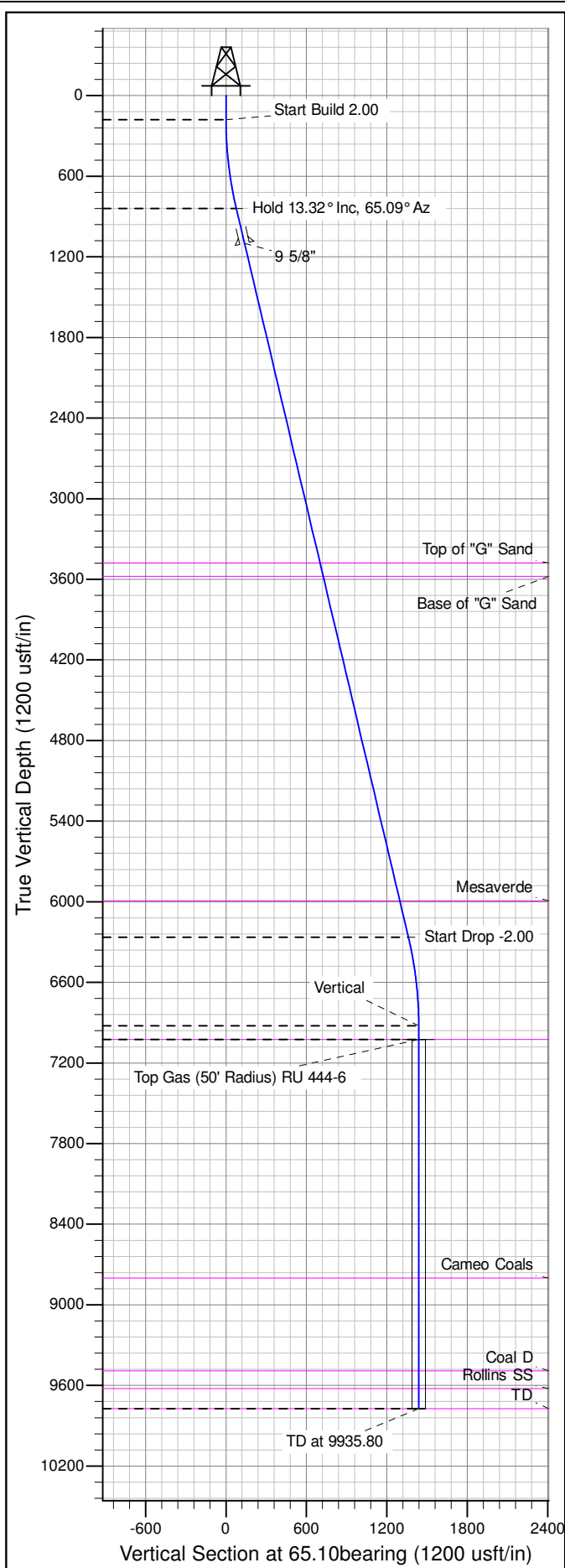
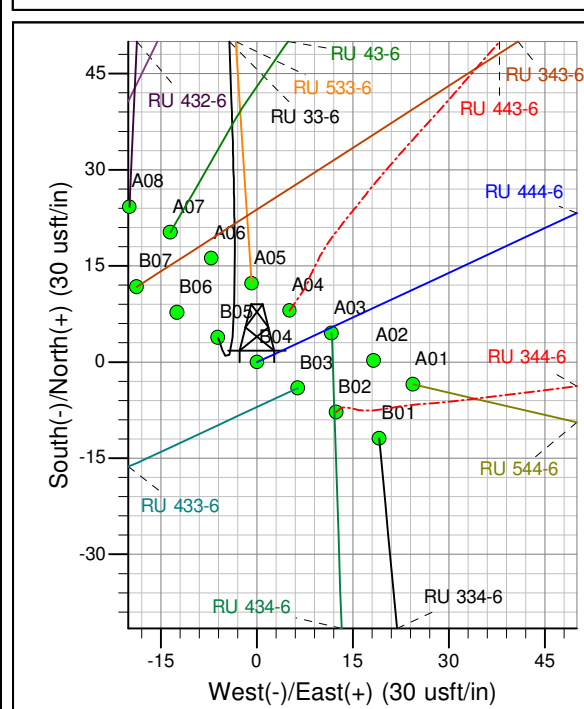
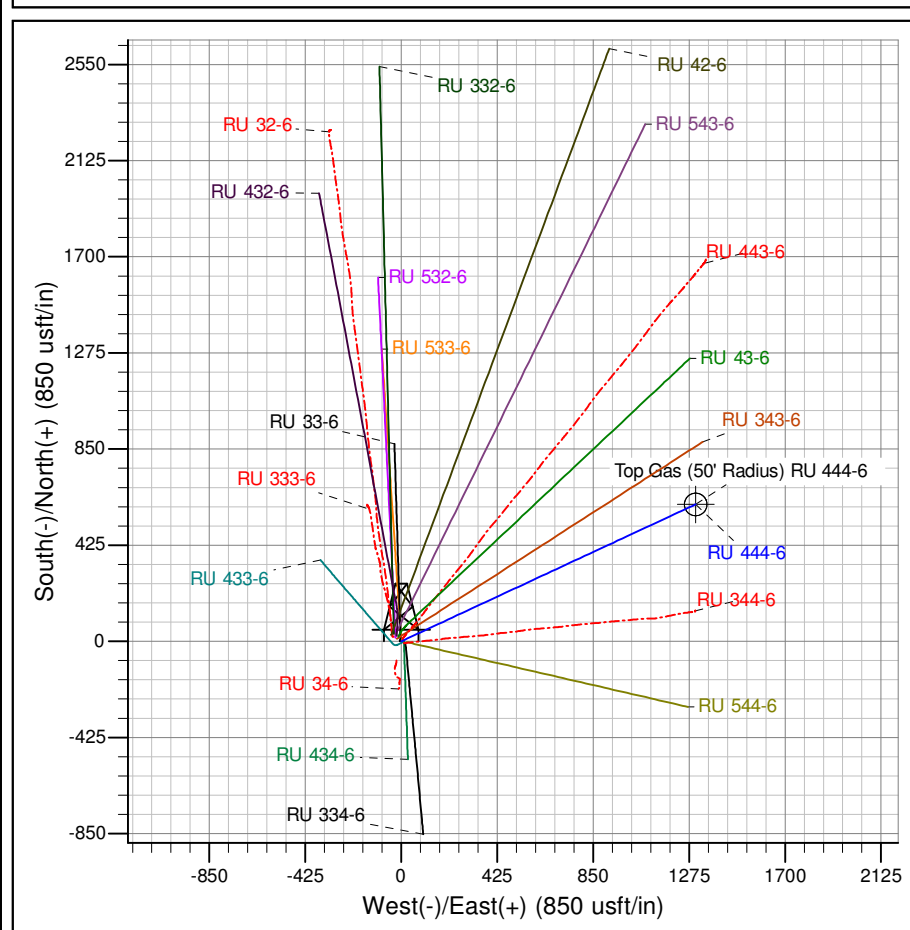




Well Name: RU 444-6
Surface Location: RU 34-6 Pad
North American Datum 1983 , US State Plane 1983 , Colorado Central Zone
Ground Elevation: 7537.00
+N/-S +E/-W Northing Easting Latitude Longitude Slot
0.00 0.00 1603584.40000 2346575.00000 39.46776 -107.81479 B04
KELLY BUSHING @ 7563.00usft (Nabors 574 (26' RKB) mab)



ANNOTATIONS									
TVD	MD	Inc	Azi	+N/-S	+E/-W	Vsect	Departure	Annotation	
180.00	180.00	0.00	0.00	0.00	0.00	0.00	0.00	Start Build 2.00	
839.78	845.75	13.32	65.09	32.43	69.85	77.01	77.01	Hold 13.32° Inc, 65.09° Az	
6264.22	6420.05	13.32	65.09	573.11	1234.23	1360.80	1360.80	Start Drop -2.00	
6924.00	7085.80	0.00	0.00	605.55	1304.07	1437.81	1437.81	Vertical	
7024.00	7185.80	0.00	0.00	605.55	1304.07	1437.81	1437.81	Top Gas	
9774.00	9935.80	0.00	0.00	605.55	1304.07	1437.81	1437.81	TD at 9935.80	



Azimuths to True North
Magnetic North: 10.59°

Magnetic Field
Strength: 52537.3snT
Dip Angle: 65.83°
Date: 10/21/2008
Model: IGRF2005-10

Project: RU 06-07S-093W
Site: RU 34-6 Pad
Well: RU 444-6
Plan #5 08Jul14 mab



PICEANCE VLY NAD 83

RU 06-07S-093W

RU 34-6 Pad

RU 444-6 - Slot B04

Wellbore #1

Plan: Plan #5 08Jul14 mab

Standard Planning Report - Geographic

14 August, 2014



WPX
Planning Report - Geographic

Database:	COMPASS-PICEANCE	Local Co-ordinate Reference:	Well RU 444-6 - Slot B04
Company:	PICEANCE VLY NAD 83	TVD Reference:	KELLY BUSHING @ 7563.00usft (Nabors 574 (26' RKB) mab)
Project:	RU 06-07S-093W	MD Reference:	KELLY BUSHING @ 7563.00usft (Nabors 574 (26' RKB) mab)
Site:	RU 34-6 Pad	North Reference:	True
Well:	RU 444-6	Survey Calculation Method:	Minimum Curvature
Wellbore:	Wellbore #1		
Design:	Plan #5 08Jul14 mab		

Project	RU 06-07S-093W		
Map System:	US State Plane 1983	System Datum:	Mean Sea Level
Geo Datum:	North American Datum 1983		
Map Zone:	Colorado Central Zone		Using geodetic scale factor

Site	RU 34-6 Pad			
Site Position:		Northing:	1,603,613.20000 usft	Latitude: 39.46783
From: Map		Easting:	2,346,531.50000 usft	Longitude: -107.81494
Position Uncertainty:	0.00 usft	Slot Radius:	13.200 in	Grid Convergence: -1.46 °

Well	RU 444-6 - Slot B04					
Well Position	+N/-S	0.00 usft	Northing:	1,603,584.40000 usft	Latitude:	39.46776
	+E/-W	0.00 usft	Easting:	2,346,575.00000 usft	Longitude:	-107.81479
Position Uncertainty		0.00 usft	Wellhead Elevation:		Ground Level:	7,537.00 usft

Wellbore	Wellbore #1				
Magnetics	Model Name	Sample Date	Declination (°)	Dip Angle (°)	Field Strength (nT)
	IGRF2005-10	10/21/2008	10.59	65.83	52,537

Design	Plan #5 08Jul14 mab			
Audit Notes:				
Version:	Phase:	PLAN	Tie On Depth:	0.00
Vertical Section:	Depth From (TVD) (usft)	+N/-S (usft)	+E/-W (usft)	Direction (bearing)
	0.00	0.00	0.00	65.10

Plan Sections										
Measured Depth (usft)	Inclination (°)	Azimuth (bearing)	Vertical Depth (usft)	+N/-S (usft)	+E/-W (usft)	Dogleg Rate (°/100usft)	Build Rate (°/100usft)	Turn Rate (°/100usft)	TFO (°)	Target
0.00	0.00	0.00	0.00	0.00	0.00	0.00	0.00	0.00	0.00	
180.00	0.00	0.00	180.00	0.00	0.00	0.00	0.00	0.00	0.00	
845.75	13.32	65.09	839.78	32.43	69.85	2.00	2.00	0.00	65.09	
6,420.05	13.32	65.09	6,264.22	573.11	1,234.23	0.00	0.00	0.00	0.00	
7,085.80	0.00	0.00	6,924.00	605.55	1,304.07	2.00	-2.00	0.00	180.00	
7,185.80	0.00	0.00	7,024.00	605.55	1,304.07	0.00	0.00	0.00	0.00	Top Gas (50' Radius)
9,935.80	0.00	0.00	9,774.00	605.55	1,304.07	0.00	0.00	0.00	0.00	



WPX
Planning Report - Geographic

Database:	COMPASS-PICEANCE	Local Co-ordinate Reference:	Well RU 444-6 - Slot B04
Company:	PICEANCE VLY NAD 83	TVD Reference:	KELLY BUSHING @ 7563.00usft (Nabors 574 (26' RKB) mab)
Project:	RU 06-07S-093W	MD Reference:	KELLY BUSHING @ 7563.00usft (Nabors 574 (26' RKB) mab)
Site:	RU 34-6 Pad	North Reference:	True
Well:	RU 444-6	Survey Calculation Method:	Minimum Curvature
Wellbore:	Wellbore #1		
Design:	Plan #5 08Jul14 mab		

Planned Survey										
Measured Depth (usft)	Inclination (°)	Azimuth (bearing)	Vertical Depth (usft)	+N/-S (usft)	+E/-W (usft)	Map Northing (usft)	Map Easting (usft)	Latitude	Longitude	
0.00	0.00	0.00	0.00	0.00	0.00	1,603,584.40000	2,346,575.00000	39.46776	-107.81479	
180.00	0.00	0.00	180.00	0.00	0.00	1,603,584.40000	2,346,575.00000	39.46776	-107.81479	
Start Build 2.00										
200.00	0.40	65.09	200.00	0.03	0.06	1,603,584.42778	2,346,575.06404	39.46776	-107.81479	
400.00	4.40	65.09	399.78	3.56	7.66	1,603,587.75955	2,346,582.74568	39.46777	-107.81476	
600.00	8.40	65.09	598.50	12.94	27.87	1,603,596.62839	2,346,603.19345	39.46779	-107.81469	
800.00	12.40	65.09	795.17	28.15	60.61	1,603,610.99110	2,346,636.30774	39.46783	-107.81457	
845.75	13.32	65.09	839.78	32.43	69.85	1,603,615.04205	2,346,645.64751	39.46785	-107.81454	
Hold 13.32° Inc, 65.09° Az										
1,000.00	13.32	65.09	989.88	47.39	102.07	1,603,629.17703	2,346,678.23675	39.46789	-107.81443	
1,113.16	13.32	65.09	1,100.00	58.37	125.71	1,603,639.54720	2,346,702.14594	39.46792	-107.81434	
9 5/8"										
1,200.00	13.32	65.09	1,184.50	66.79	143.84	1,603,647.50460	2,346,720.49231	39.46794	-107.81428	
1,400.00	13.32	65.09	1,379.12	86.19	185.62	1,603,665.83216	2,346,762.74788	39.46799	-107.81413	
1,600.00	13.32	65.09	1,573.75	105.59	227.40	1,603,684.15973	2,346,805.00343	39.46805	-107.81398	
1,800.00	13.32	65.09	1,768.37	124.99	269.17	1,603,702.48730	2,346,847.25899	39.46810	-107.81383	
2,000.00	13.32	65.09	1,963.00	144.39	310.95	1,603,720.81486	2,346,889.51455	39.46815	-107.81369	
2,200.00	13.32	65.09	2,157.62	163.79	352.73	1,603,739.14243	2,346,931.77011	39.46821	-107.81354	
2,400.00	13.32	65.09	2,352.24	183.19	394.50	1,603,757.47000	2,346,974.02567	39.46826	-107.81339	
2,600.00	13.32	65.09	2,546.87	202.59	436.28	1,603,775.79756	2,347,016.28123	39.46831	-107.81324	
2,800.00	13.32	65.09	2,741.49	221.99	478.06	1,603,794.12512	2,347,058.53679	39.46837	-107.81310	
3,000.00	13.32	65.09	2,936.11	241.39	519.83	1,603,812.45269	2,347,100.79236	39.46842	-107.81295	
3,200.00	13.32	65.09	3,130.74	260.78	561.61	1,603,830.78025	2,347,143.04792	39.46847	-107.81280	
3,400.00	13.32	65.09	3,325.36	280.18	603.39	1,603,849.10782	2,347,185.30348	39.46853	-107.81265	
3,556.85	13.32	65.09	3,478.00	295.40	636.15	1,603,863.48166	2,347,218.44341	39.46857	-107.81254	
Top of "G" Sand										
3,600.00	13.32	65.09	3,519.99	299.58	645.16	1,603,867.43539	2,347,227.55903	39.46858	-107.81250	
3,659.62	13.32	65.09	3,578.00	305.36	657.62	1,603,872.89858	2,347,240.15483	39.46860	-107.81246	
Base of "G" Sand										
3,800.00	13.32	65.09	3,714.61	318.98	686.94	1,603,885.76295	2,347,269.81459	39.46863	-107.81236	
4,000.00	13.32	65.09	3,909.23	338.38	728.72	1,603,904.09052	2,347,312.07015	39.46869	-107.81221	
4,200.00	13.32	65.09	4,103.86	357.78	770.49	1,603,922.41809	2,347,354.32571	39.46874	-107.81206	
4,400.00	13.32	65.09	4,298.48	377.18	812.27	1,603,940.74566	2,347,396.58127	39.46879	-107.81191	
4,600.00	13.32	65.09	4,493.10	396.58	854.05	1,603,959.07322	2,347,438.83683	39.46885	-107.81176	
4,800.00	13.32	65.09	4,687.73	415.98	895.82	1,603,977.40079	2,347,481.09240	39.46890	-107.81162	
5,000.00	13.32	65.09	4,882.35	435.38	937.60	1,603,995.72836	2,347,523.34796	39.46895	-107.81147	
5,200.00	13.32	65.09	5,076.98	454.77	979.38	1,604,014.05592	2,347,565.60352	39.46901	-107.81132	
5,400.00	13.32	65.09	5,271.60	474.17	1,021.15	1,604,032.38349	2,347,607.85907	39.46906	-107.81117	
5,600.00	13.32	65.09	5,466.22	493.57	1,062.93	1,604,050.71106	2,347,650.11463	39.46911	-107.81102	
5,800.00	13.32	65.09	5,660.85	512.97	1,104.71	1,604,069.03862	2,347,692.37019	39.46917	-107.81088	
6,000.00	13.32	65.09	5,855.47	532.37	1,146.49	1,604,087.36619	2,347,734.62575	39.46922	-107.81073	
6,139.27	13.32	65.09	5,991.00	545.88	1,175.58	1,604,100.12897	2,347,764.05130	39.46926	-107.81062	
Mesaverde										
6,200.00	13.32	65.09	6,050.09	551.77	1,188.26	1,604,105.69376	2,347,776.88131	39.46927	-107.81058	
6,400.00	13.32	65.09	6,244.72	571.17	1,230.04	1,604,124.02132	2,347,819.13688	39.46932	-107.81043	
6,420.05	13.32	65.09	6,264.22	573.11	1,234.23	1,604,125.85832	2,347,823.37221	39.46933	-107.81042	
Start Drop -2.00										
6,600.00	9.72	65.09	6,440.53	588.24	1,266.80	1,604,140.15032	2,347,856.32347	39.46937	-107.81030	
6,800.00	5.72	65.09	6,638.68	599.55	1,291.15	1,604,150.83267	2,347,880.95243	39.46940	-107.81021	
7,000.00	1.72	65.09	6,838.21	605.01	1,302.91	1,604,155.98920	2,347,892.84117	39.46942	-107.81017	
7,085.80	0.00	0.00	6,924.00	605.55	1,304.07	1,604,156.50037	2,347,894.01973	39.46942	-107.81017	
Vertical										



WPX
Planning Report - Geographic

Database:	COMPASS-PICEANCE	Local Co-ordinate Reference:	Well RU 444-6 - Slot B04
Company:	PICEANCE VLY NAD 83	TVD Reference:	KELLY BUSHING @ 7563.00usft (Nabors 574 (26' RKB) mab)
Project:	RU 06-07S-093W	MD Reference:	KELLY BUSHING @ 7563.00usft (Nabors 574 (26' RKB) mab)
Site:	RU 34-6 Pad	North Reference:	True
Well:	RU 444-6	Survey Calculation Method:	Minimum Curvature
Wellbore:	Wellbore #1		
Design:	Plan #5 08Jul14 mab		

Planned Survey									
Measured Depth (usft)	Inclination (°)	Azimuth (bearing)	Vertical Depth (usft)	+N/-S (usft)	+E/-W (usft)	Map Northing (usft)	Map Easting (usft)	Latitude	Longitude
7,185.80	0.00	0.00	7,024.00	605.55	1,304.07	1,604,156.50037	2,347,894.01973	39.46942	-107.81017
Top Gas - Approx. Top Gas									
7,200.00	0.00	0.00	7,038.20	605.55	1,304.07	1,604,156.50037	2,347,894.01973	39.46942	-107.81017
7,400.00	0.00	0.00	7,238.20	605.55	1,304.07	1,604,156.50037	2,347,894.01973	39.46942	-107.81017
7,600.00	0.00	0.00	7,438.20	605.55	1,304.07	1,604,156.50037	2,347,894.01973	39.46942	-107.81017
7,800.00	0.00	0.00	7,638.20	605.55	1,304.07	1,604,156.50037	2,347,894.01973	39.46942	-107.81017
8,000.00	0.00	0.00	7,838.20	605.55	1,304.07	1,604,156.50037	2,347,894.01973	39.46942	-107.81017
8,200.00	0.00	0.00	8,038.20	605.55	1,304.07	1,604,156.50037	2,347,894.01973	39.46942	-107.81017
8,400.00	0.00	0.00	8,238.20	605.55	1,304.07	1,604,156.50037	2,347,894.01973	39.46942	-107.81017
8,600.00	0.00	0.00	8,438.20	605.55	1,304.07	1,604,156.50037	2,347,894.01973	39.46942	-107.81017
8,800.00	0.00	0.00	8,638.20	605.55	1,304.07	1,604,156.50037	2,347,894.01973	39.46942	-107.81017
8,961.80	0.00	0.00	8,800.00	605.55	1,304.07	1,604,156.50037	2,347,894.01973	39.46942	-107.81017
Cameo Coals									
9,000.00	0.00	0.00	8,838.20	605.55	1,304.07	1,604,156.50037	2,347,894.01973	39.46942	-107.81017
9,200.00	0.00	0.00	9,038.20	605.55	1,304.07	1,604,156.50037	2,347,894.01973	39.46942	-107.81017
9,400.00	0.00	0.00	9,238.20	605.55	1,304.07	1,604,156.50037	2,347,894.01973	39.46942	-107.81017
9,600.00	0.00	0.00	9,438.20	605.55	1,304.07	1,604,156.50037	2,347,894.01973	39.46942	-107.81017
9,653.80	0.00	0.00	9,492.00	605.55	1,304.07	1,604,156.50037	2,347,894.01973	39.46942	-107.81017
Coal D									
9,785.80	0.00	0.00	9,624.00	605.55	1,304.07	1,604,156.50037	2,347,894.01973	39.46942	-107.81017
Rollins SS									
9,800.00	0.00	0.00	9,638.20	605.55	1,304.07	1,604,156.50037	2,347,894.01973	39.46942	-107.81017
9,935.80	0.00	0.00	9,774.00	605.55	1,304.07	1,604,156.50037	2,347,894.01973	39.46942	-107.81017
TD at 9935.80 - TD									

Design Targets									
Target Name	Dip Angle (°)	Dip Dir. (bearing)	TVD (usft)	+N/-S (usft)	+E/-W (usft)	Northing (usft)	Easting (usft)	Latitude	Longitude
- hit/miss target									
- Shape									
Top Gas (50' Radius) RL	0.00	0.00	7,024.00	605.30	1,304.31	1,604,156.24867	2,347,894.24623	39.46942	-107.81017
- plan misses target center by 0.34usft at 7185.80usft MD (7024.00 TVD, 605.55 N, 1304.07 E)									
- Circle (radius 50.00)									

Casing Points					
Measured Depth (usft)	Vertical Depth (usft)	Name	Casing Diameter (in)	Hole Diameter (in)	
1,113.16	1,100.00	9 5/8"	9.625	13.500	



Database:	COMPASS-PICEANCE	Local Co-ordinate Reference:	Well RU 444-6 - Slot B04
Company:	PICEANCE VLY NAD 83	TVD Reference:	KELLY BUSHING @ 7563.00usft (Nabors 574 (26' RKB) mab)
Project:	RU 06-07S-093W	MD Reference:	KELLY BUSHING @ 7563.00usft (Nabors 574 (26' RKB) mab)
Site:	RU 34-6 Pad	North Reference:	True
Well:	RU 444-6	Survey Calculation Method:	Minimum Curvature
Wellbore:	Wellbore #1		
Design:	Plan #5 08Jul14 mab		

Formations						
Measured Depth (usft)	Vertical Depth (usft)	Name	Lithology	Dip (°)	Dip Direction (bearing)	
3,556.85	3,478.00	Top of "G" Sand				
3,659.62	3,578.00	Base of "G" Sand				
6,139.27	5,991.00	Mesaverde				
7,185.80	7,024.00	Approx. Top Gas				
8,961.80	8,800.00	Cameo Coals				
9,653.80	9,492.00	Coal D				
9,785.80	9,624.00	Rollins SS				
9,935.80	9,774.00	TD				

Plan Annotations				
Measured Depth (usft)	Vertical Depth (usft)	Local Coordinates		Comment
		+N/-S (usft)	+E/-W (usft)	
180.00	180.00	0.00	0.00	Start Build 2.00
845.75	839.78	32.43	69.85	Hold 13.32° Inc, 65.09° Az
6,420.05	6,264.22	573.11	1,234.23	Start Drop -2.00
7,085.80	6,924.00	605.55	1,304.07	Vertical
7,185.80	7,024.00	605.55	1,304.07	Top Gas
9,935.80	9,774.00	605.55	1,304.07	TD at 9935.80