

**ANADARKO PETROLEUM CORP - EBUS
DO NOT MAIL - PO BOX 4995
THE WOODLANDS, Texas**

SEKICH STATE #39N-17HZ

Majors 29

Post Job Summary **Cement Surface Casing**

Date Prepared: 3/31/2014
Version: 1

Service Supervisor: BULINSKI, MATTHEW

Submitted by: PRUDHOMME, JOSHUA

HALLIBURTON

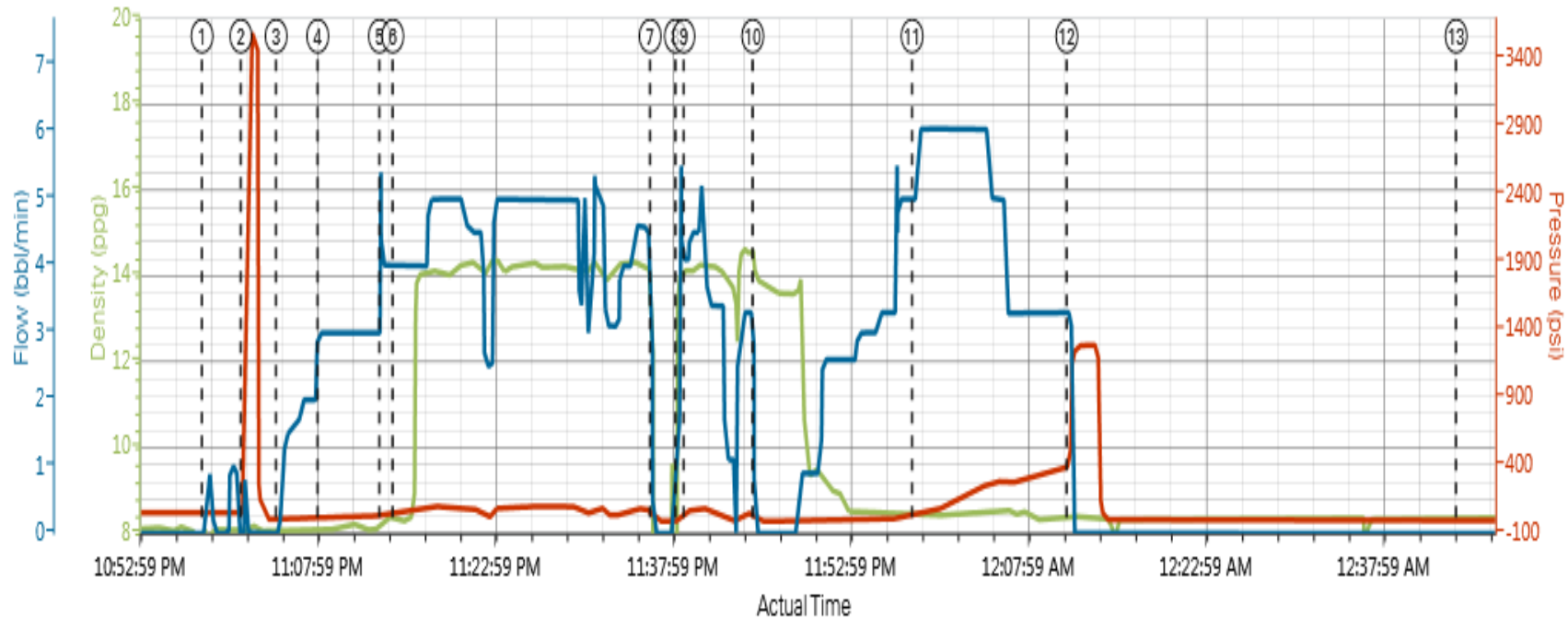
Pumping Schedule

Stage /Plug #	Fluid #	Fluid Type	Fluid Name	Surface Density lbm/gal	Avg Rate bbl/min	Surface Volume	Downhole Volume
1	1	Spacer	Fresh Water Spacer	8.33		10.0 bbl	10.0 bbl
1	1	Spacer	Mud Flush	8.50		12.0 bbl	12.0 bbl
1	1	Spacer	Fresh Water Spacer	8.33		10.0 bbl	10.0 bbl
1	2	Cement Slurry	SwiftCem B2	14.2		456.0 sacks	456.0 sacks

HALLIBURTON

Data Acquisition

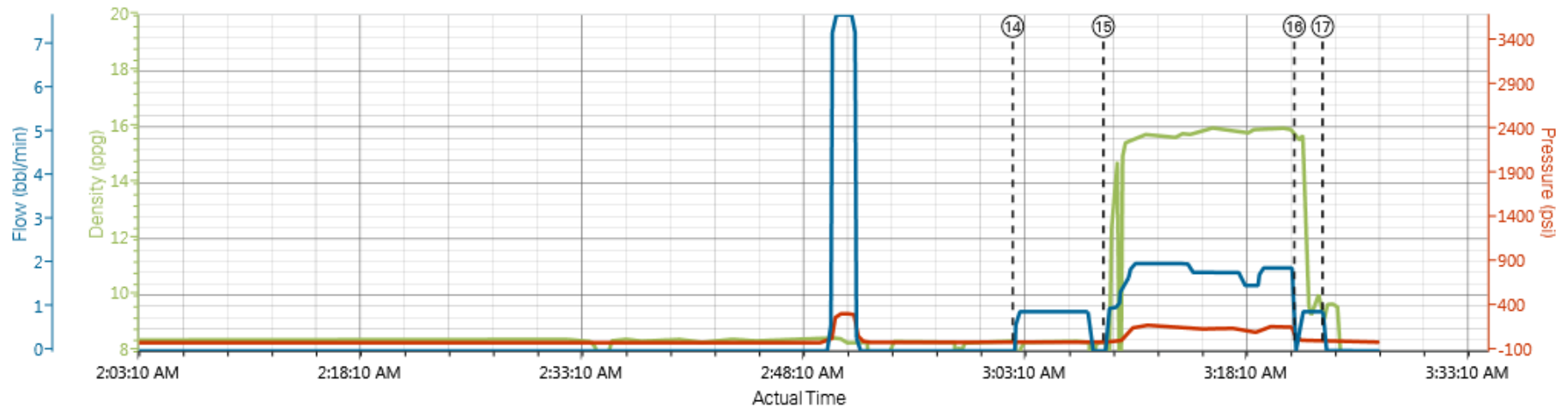
Custom Results



DH Density (ppg) PS Pump Press (psi) Comb Pump Rate (bbl/min)

① Start Job 8.09;51;0	④ Pump Spacer 2 8.1;27;3	⑦ Shutdown 1.08;16;0	⑩ Shutdown 13.88;7;0	⑬ Other 8.36;-5.17;0	⑯ Other 15.51;21;0
② Test Lines 8.11;55;0.8	⑤ Pump Spacer 1 8.31;48;4	⑧ Resume 13.99;-4;1.4	⑪ Pump Displacement 8.47;46;5	⑭ Other 0.72;2;0.9	⑰ End Job 9.67;3;0
③ Pump Spacer 1 8.11;-3;0	⑥ Pump Lead Cement 8.28;51;4	⑨ Water Mark 14.09;65;4.1	⑫ Bump Plug 8.39;514;3.3	⑮ Pump Lead Cement 0.84;-1;0.9	

Custom Results



DH Density (ppg) PS Pump Press (psi) Comb Pump Rate (bbl/min)

① Start Job 8.09;51;0	④ Pump Spacer 2 8.1;27;3	⑦ Shutdown 1.08;16;0	⑩ Shutdown 13.88;7;0	⑬ Other 8.36;-5.17;0	⑯ Other 15.51;21;0
② Test Lines 8.11;55;0.8	⑤ Pump Spacer 1 8.31;48;4	⑧ Resume 13.99;-4;1.4	⑪ Pump Displacement 8.47;46;5	⑭ Other 0.72;2;0.9	⑰ End Job 9.67;3;0
③ Pump Spacer 1 8.11;-3;0	⑥ Pump Lead Cement 8.28;51;4	⑨ Water Mark 14.09;65;4.1	⑫ Bump Plug 8.39;514;3.3	⑮ Pump Lead Cement 0.84;-1;0.9	

HALLIBURTON

Service Supervisor Reports

Job Log

Date/Time	Chart #	Activity Code	Pump Rate	Cum Vol	Pump	Pressure (psig)	Comments
03/26/2014 13:00		Call Out					
03/26/2014 15:00		Depart Yard Safety Meeting					JSA on Job materials, pre-tripping trucks, and driving to location
03/26/2014 17:00		Arrive at Location from Service Center					Arrived to location 1hr early and rig is finishing pulling DP.. Finished running Csg at 20:15
03/26/2014 17:15		Assessment Of Location Safety Meeting					Hazard Hunt on location before spotting in trucks
03/26/2014 17:30		Safety Meeting - Pre Rig-Up					JSA on rigging up bulk trucks and iron to rig
03/26/2014 18:00		Rig-Up Equipment					
03/26/2014 18:30		Rig-Up Completed					
03/26/2014 20:45		Safety Meeting - Pre Job					JSA with Company man, Rig hands, and HES hands on pump schedule
03/26/2014 22:58		Start Job					
03/26/2014 23:01		Test Lines					3500psi Pressure test Lines
03/26/2014 23:04		Pump Spacer 1	2	10		28.0	10bbls H2O spacer
03/26/2014 23:07		Pump Spacer 2	3	12		45.0	12bbls Mud Flush spacer
03/26/2014 23:13		Pump Spacer 1	4	10		51.0	10bbls H2O spacer
03/26/2014 23:16		Pump Cement	5	125		105.0	456sks Swiftcem, 14.2ppg, 1.54yield, 7.64gal/sk, Mixed with rig water and # verify by pressurized mud scales 3x's..
03/26/2014 23:44		Shutdown					
03/26/2014 23:45		Drop Top Plug					Pre-Loaded
03/26/2014 23:47		Pump Displacement	5	90		120.0	H2O displacement, Good returns throughout... No Cmt to surface. Called and ordered 100sks G cmt for top out
03/27/2014 00:11		Bump Plug	3			394.0	Plug landed at 394psi and brought to 1207psi for 2mins
03/27/2014 00:13		Check Floats					Floats held
03/27/2014 00:15		Other					Waiting on Top out cmt to be delivered
03/27/2014 03:02		Pump Spacer 1	0.8	5		20.0	5bbls H2O to catch returns
03/27/2014 03:08		Pump Cement	2	20		200.0	100sks G cmt 15.8ppg... 10bbls cmt to surface
03/27/2014 03:21		Pump Displacement	2	1		150.0	1bbl H2O to clean lines
03/27/2014 03:23		End Job					
03/27/2014 03:30		Safety Meeting - Pre Rig-Down					JSA on rigging down bulk trucks and iron from rig
03/27/2014 03:35		Rig-Down Equipment					
03/27/2014 04:15		Rig-Down Completed					
03/27/2014 04:20		Safety Meeting - Departing Location					JSA on location walk around, pre-tripping trucks, and driving to Brighton yard
03/27/2014 10:28		Comment					After review and technical analysis from chart. Water volume was verified. Start up water used to build full tub prior to pump cement event was 6bbls. Mix water used during the mixing of cement was 75.3bbls. Totaling 81.3bbls.
03/27/2014 10:28		Comment					Verified Bulk plant accublend showing full cement was batched and loaded properly.
03/27/2014 10:28		Comment					SS on location forgot to account for mix water used prior to pump cement code. Once code is entered it resets the mix water total and negates the previous water added to the tub prior to the code.

The Road to Excellence Starts with Safety

Sold To #: 300466		Ship To #: 3360721		Quote #:		Sales Order #: 901223117	
Customer: ANADARKO PETROLEUM CORP - EBUS				Customer Rep: Balkinbush, Bob			
Well Name: SEKICH STATE			Well #: #39N-17HZ		API/UWI #: 05-123-39047		
Field:		City (SAP): PLATTEVILLE		County/Parish: Weld		State: Colorado	
Contractor: Majors			Rig/Platform Name/Num: Majors 29				
Job Purpose: Cement Surface Casing							
Well Type: Development Well				Job Type: Cement Surface Casing			
Sales Person: GREGORY, JON			Srvc Supervisor: BULINSKI, MATTHEW			MBU ID Emp #: 483865	

Job Personnel

HES Emp Name	Exp Hrs	Emp #	HES Emp Name	Exp Hrs	Emp #	HES Emp Name	Exp Hrs	Emp #
BULINSKI, MATTHEW J	0.0	483865	Dacosta, charles	0.0	123456	JEWELL, WILLIAM Uris	0.0	503358
SHERRATT, JARED John	0.0	545345	TORREY, SPENCER Kenneth	0.0	549837			

Equipment

HES Unit #	Distance-1 way	HES Unit #	Distance-1 way	HES Unit #	Distance-1 way	HES Unit #	Distance-1 way
10857012C	30 mile	11605598	30 mile	11764052	30 mile	11812069C	30 mile
5707C	30 mile						

Job**Job Times**

Formation Name							Date	Time	Time Zone
Formation Depth (MD)	Top			Bottom		Called Out	26 - Mar - 2014	13:00	MST
Form Type				BHST		On Location	26 - Mar - 2014	17:00	MST
Job depth MD	1207. ft		Job Depth TVD	1207. ft		Job Started	19 - Mar - 2014	22:58	MST
Water Depth				Wk Ht Above Floor		Job Completed	27 - Mar - 2014	03:23	MST
Perforation Depth (MD)	From			To		Departed Loc	27 - Mar - 2014	04:30	MST

Fluid Data									
Stage/Plug #: 1									
Fluid #	Stage Type	Fluid Name	Qty	Qty uom	Mixing Density lbm/gal	Yield ft ³ /sk	Mix Fluid Gal/sk	Rate bbl/min	Total Mix Fluid Gal/sk
1	Fresh Water Spacer		10.0	bbl	8.33				
1	Mud Flush		12.0	bbl	8.5				
1	Fresh Water Spacer		10.0	bbl	8.33				
2	SwiftCem B2	SWIFTCem (TM) SYSTEM (452990)	456	sacks	14.2	1.54	7.64		7.64
7.64 Gal		FRESH WATER							
Calculated Values		Pressures		Volumes					
Displacement		Shut In: Instant		Lost Returns		Cement Slurry		Pad	
Top Of Cement		5 Min		Cement Returns		Actual Displacement		90.0 Treatment	
Frac Gradient		15 Min		Spacers		Load and Breakdown		Total Job	
Rates									
Circulating		Mixing		Displacement		Avg. Job			
Cement Left In Pipe		Amount	0 ft	Reason	Shoe Joint				
Frac Ring # 1 @	ID	Frac ring # 2 @	ID	Frac Ring # 3 @	ID	Frac Ring # 4 @	ID		
The Information Stated Herein Is Correct				Customer Representative Signature					

