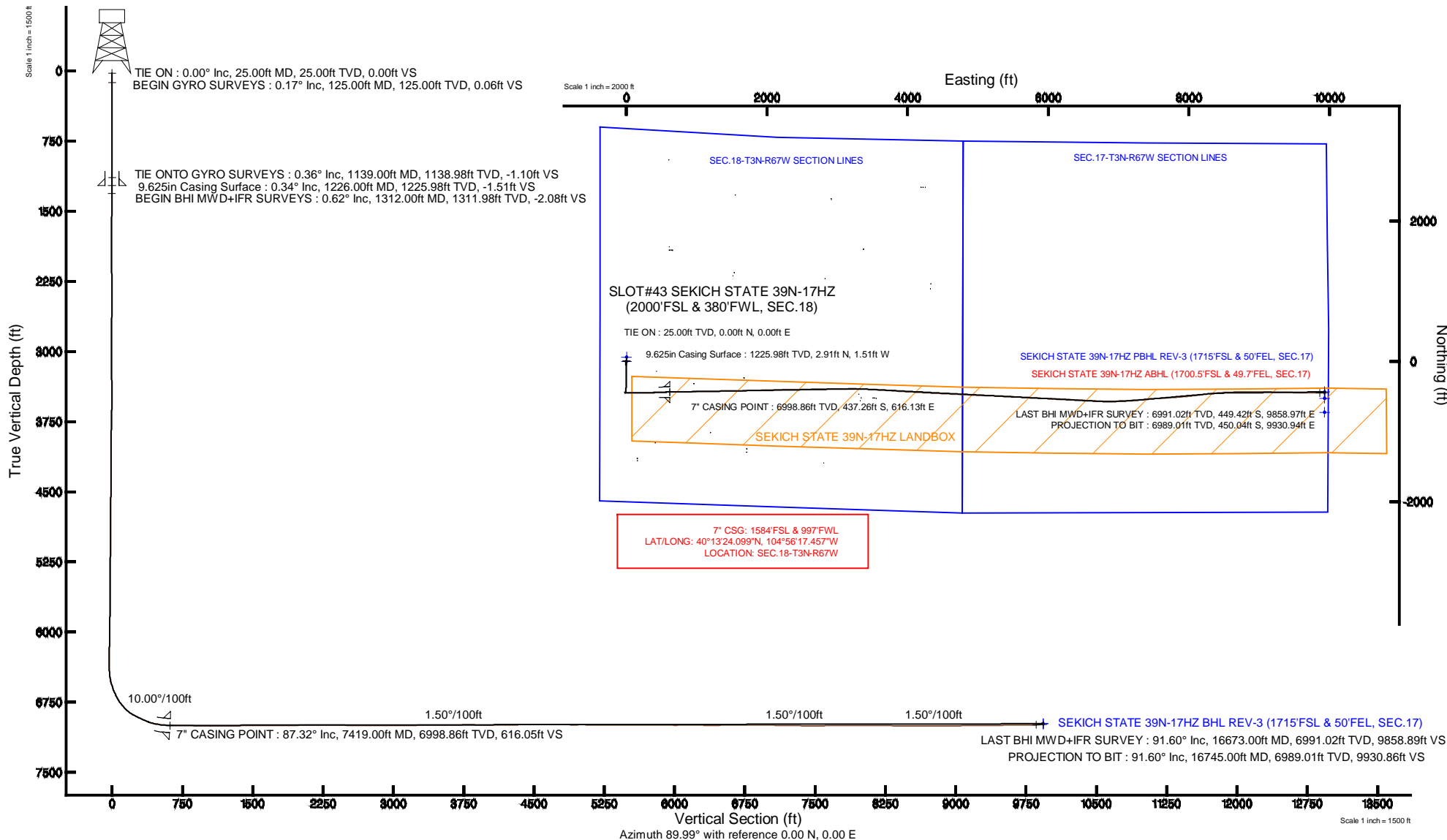


KERR-MCGEE OIL & GAS ONSHORE LP

Location: COLORADO Slot: SLOT#43 SEKICH STATE 39N-17HZ (2000'FSL & 380'FWL, SEC.18)
 Field: WELD COUNTY (KERR MCGEE) Well: SEKICH STATE 39N-17HZ
 Facility: SEC.18-T3N-R67W Wellbore: SEKICH STATE 39N-17HZ PWB

Plot reference wellpath is SEKICH STATE 39N-17HZ (REV-B.0) PWP

True vertical depths are referenced to H&P 307 (25KB) (RKB)	Grid System: NAD83 / Lambert Colorado SP, Northern Zone (501), US feet
Measured depths are referenced to H&P 307 (25KB) (RKB)	North Reference: True north
H&P 307 (25KB) (RKB) to Mean Sea Level: 4880 feet	Scale: True distance
Mean Sea Level to Mud line (At Slot: SLOT#43 SEKICH STATE 39N-17HZ (2000'FSL & 380'FWL, SEC.18)): 0 feet	Depths are in feet
Coordinates are in feet referenced to Slot	Created by: robale01 on 13/May/2014



Actual Wellpath Report

SEKICH STATE 39N-17HZ AWP

Page 1 of 7

REFERENCE WELLPATH IDENTIFICATION

Operator	KERR-MCGEE OIL & GAS ONSHORE LP	Slot	SLOT#43 SEKICH STATE 39N-17HZ (2000'FSL & 380'FWL, SEC.18)
Area	COLORADO	Well	SEKICH STATE 39N-17HZ
Field	WELD COUNTY (KERR MCGEE)	Wellbore	SEKICH STATE 39N-17HZ AWB
Facility	SEC.18-T3N-R67W		

REPORT SETUP INFORMATION

Projection System	NAD83 / Lambert Colorado SP, Northern Zone (501), US feet	Software System	WellArchitect® 4.0.0
North Reference	True	User	Robiale01
Scale	0.999957	Report Generated	13/May/2014 at 10:44
Convergence at slot	n/a	Database/Source file	WellArchitectDB/SEKICH_STATE_39N-17HZ_AWB.xml

WELLPATH LOCATION

	Local coordinates		Grid coordinates		Geographic coordinates	
	North[ft]	East[ft]	Easting[US ft]	Northing[US ft]	Latitude	Longitude
Slot Location	-1278.24	-1532.73	3156259.78	1325142.74	40°13'28.420"N	104°56'25.400"W
Facility Reference Pt			3157784.27	1326430.67	40°13'41.052"N	104°56'05.640"W
Field Reference Pt			3197771.84	1268891.29	40°04'09.600"N	104°47'36.000"W

WELLPATH DATUM

Calculation method	Minimum curvature	H&P 307 (25'KB) (RKB) to Installation Vertical Datum	4880.00ft
Horizontal Reference Pt	Slot	H&P 307 (25'KB) (RKB) to Mean Sea Level	4880.00ft
Vertical Reference Pt	H&P 307 (25'KB) (RKB)	H&P 307 (25'KB) (RKB) to Mud Line at Slot (SLOT#43 SEKICH STATE 39N-17HZ (2000'FSL & 380'FWL, SEC.18))	4880.00ft
MD Reference Pt	H&P 307 (25'KB) (RKB)	Section Origin	N 0.00, E 0.00 ft
Field Vertical Reference	Mean Sea Level	Section Azimuth	91.72°

Actual Wellpath Report

SEKICH STATE 39N-17HZ AWP

Page 2 of 7

REFERENCE WELLPATH IDENTIFICATION			
Operator	KERR-MCGEE OIL & GAS ONSHORE LP	Slot	SLOT#43 SEKICH STATE 39N-17HZ (2000'FSL & 380'FWL, SEC.18)
Area	COLORADO	Well	SEKICH STATE 39N-17HZ
Field	WELD COUNTY (KERR MCGEE)	Wellbore	SEKICH STATE 39N-17HZ AWP
Facility	SEC.18-T3N-R67W		

WELLPATH DATA (180 stations) † = interpolated/extrapolated station										
MD [ft]	Inclination [°]	Azimuth [°]	TVD [ft]	Vert Sect [ft]	North [ft]	East [ft]	Latitude	Longitude	DLS [°/100ft]	Comments
0.00†	0.000	156.100	0.00	0.00	0.00	0.00	40°13'28.420"N	104°56'25.400"W	0.00	
25.00	0.000	156.100	25.00	0.00	0.00	0.00	40°13'28.420"N	104°56'25.400"W	0.00	TIE ON
125.00	0.170	156.100	125.00	0.06	-0.14	0.06	40°13'28.419"N	104°56'25.399"W	0.17	BEGIN GYRO SURVEYS
225.00	0.570	336.650	225.00	-0.08	0.19	-0.08	40°13'28.422"N	104°56'25.401"W	0.74	
325.00	0.490	91.290	325.00	0.13	0.63	0.15	40°13'28.426"N	104°56'25.398"W	0.89	
425.00	0.370	288.330	425.00	0.25	0.72	0.27	40°13'28.427"N	104°56'25.396"W	0.85	
525.00	0.430	45.620	524.99	0.20	1.09	0.24	40°13'28.431"N	104°56'25.397"W	0.68	
625.00	0.240	242.320	624.99	0.28	1.25	0.32	40°13'28.432"N	104°56'25.396"W	0.66	
725.00	0.570	38.130	724.99	0.39	1.55	0.44	40°13'28.435"N	104°56'25.394"W	0.80	
825.00	0.540	307.050	824.99	0.30	2.22	0.37	40°13'28.442"N	104°56'25.395"W	0.79	
925.00	0.360	37.060	924.99	0.10	2.76	0.18	40°13'28.447"N	104°56'25.398"W	0.65	
1025.00	0.770	285.240	1024.98	-0.37	3.18	-0.27	40°13'28.451"N	104°56'25.404"W	0.96	
1125.00	0.300	209.890	1124.98	-1.15	3.13	-1.05	40°13'28.451"N	104°56'25.414"W	0.75	
1139.00	0.360	217.380	1138.98	-1.19	3.07	-1.10	40°13'28.450"N	104°56'25.414"W	0.53	TIE ONTO GYRO SURVEYS
1312.00	0.620	315.700	1311.98	-2.18	3.31	-2.08	40°13'28.453"N	104°56'25.427"W	0.44	BEGIN BHI MWD+IFR SURVEYS
1406.00	1.660	198.040	1405.96	-2.93	2.37	-2.86	40°13'28.443"N	104°56'25.437"W	2.15	
1501.00	3.210	187.360	1500.87	-3.58	-1.57	-3.63	40°13'28.404"N	104°56'25.447"W	1.69	
1596.00	4.620	192.110	1595.65	-4.53	-7.95	-4.77	40°13'28.341"N	104°56'25.461"W	1.52	
1688.00	6.250	189.320	1687.23	-5.86	-16.52	-6.36	40°13'28.257"N	104°56'25.482"W	1.79	
1782.00	7.930	180.960	1780.51	-6.45	-28.05	-7.29	40°13'28.143"N	104°56'25.494"W	2.09	
1875.00	9.170	177.190	1872.48	-5.78	-41.87	-7.04	40°13'28.006"N	104°56'25.491"W	1.46	
1968.00	10.500	175.480	1964.11	-4.27	-57.72	-6.01	40°13'27.850"N	104°56'25.477"W	1.46	
2060.00	10.800	177.170	2054.53	-2.68	-74.68	-4.92	40°13'27.682"N	104°56'25.463"W	0.47	
2154.00	11.670	178.520	2146.72	-1.45	-92.98	-4.24	40°13'27.501"N	104°56'25.455"W	0.97	
2247.00	10.120	176.930	2238.05	-0.24	-110.54	-3.56	40°13'27.328"N	104°56'25.446"W	1.70	
2340.00	10.710	178.440	2329.51	0.94	-127.34	-2.89	40°13'27.162"N	104°56'25.437"W	0.70	
2433.00	11.140	182.310	2420.83	1.34	-144.96	-3.01	40°13'26.988"N	104°56'25.439"W	0.91	
2527.00	10.680	180.220	2513.13	1.47	-162.74	-3.41	40°13'26.812"N	104°56'25.444"W	0.65	
2620.00	11.550	182.110	2604.38	1.63	-180.66	-3.79	40°13'26.635"N	104°56'25.449"W	1.01	
2713.00	10.130	183.860	2695.72	1.27	-198.13	-4.68	40°13'26.462"N	104°56'25.460"W	1.57	
2807.00	10.250	180.590	2788.24	1.12	-214.74	-5.33	40°13'26.298"N	104°56'25.469"W	0.63	
2900.00	10.700	179.400	2879.69	1.63	-231.65	-5.32	40°13'26.131"N	104°56'25.469"W	0.54	
2994.00	8.990	180.440	2972.30	2.15	-247.72	-5.29	40°13'25.972"N	104°56'25.468"W	1.83	
3087.00	9.480	176.830	3064.10	2.97	-262.63	-4.92	40°13'25.825"N	104°56'25.463"W	0.82	
3180.00	9.610	181.400	3155.81	3.66	-278.04	-4.68	40°13'25.672"N	104°56'25.460"W	0.83	
3274.00	9.810	177.630	3248.47	4.28	-293.88	-4.54	40°13'25.516"N	104°56'25.459"W	0.71	
3367.00	9.900	173.960	3340.10	5.92	-309.75	-3.38	40°13'25.359"N	104°56'25.444"W	0.68	
3462.00	9.490	179.030	3433.74	7.39	-325.70	-2.38	40°13'25.201"N	104°56'25.431"W	1.00	
3556.00	9.620	182.210	3526.44	7.69	-341.30	-2.56	40°13'25.047"N	104°56'25.433"W	0.58	
3650.00	9.900	187.810	3619.08	6.77	-357.15	-3.96	40°13'24.891"N	104°56'25.451"W	1.05	
3745.00	9.720	187.420	3712.69	5.10	-373.20	-6.10	40°13'24.732"N	104°56'25.479"W	0.20	
3839.00	9.410	188.690	3805.38	3.38	-388.66	-8.29	40°13'24.579"N	104°56'25.507"W	0.40	
3934.00	8.010	190.890	3899.28	1.38	-402.84	-10.71	40°13'24.439"N	104°56'25.538"W	1.51	
4028.00	5.450	183.480	3992.63	0.20	-413.73	-12.22	40°13'24.332"N	104°56'25.558"W	2.87	
4122.00	4.270	177.540	4086.29	0.32	-421.68	-12.34	40°13'24.253"N	104°56'25.559"W	1.36	

REFERENCE WELLPATH IDENTIFICATION

Operator	KERR-MCGEE OIL & GAS ONSHORE LP	Slot	SLOT#43 SEKICH STATE 39N-17HZ (2000'FSL & 380'FWL, SEC.18)
Area	COLORADO	Well	SEKICH STATE 39N-17HZ
Field	WELD COUNTY (KERR MCGEE)	Wellbore	SEKICH STATE 39N-17HZ AWP
Facility	SEC.18-T3N-R67W		

WELLPATH DATA (180 stations) † = interpolated/extrapolated station

MD [ft]	Inclination [°]	Azimuth [°]	TVD [ft]	Vert Sect [ft]	North [ft]	East [ft]	Latitude	Longitude	DLS [°/100ft]	Comments
4216.00	4.000	179.310	4180.05	0.71	-428.45	-12.15	40°13'24.186"N	104°56'25.557"W	0.32	
4310.00	3.130	180.740	4273.86	0.90	-434.30	-12.15	40°13'24.128"N	104°56'25.557"W	0.93	
4405.00	1.770	188.060	4368.78	0.78	-438.34	-12.38	40°13'24.088"N	104°56'25.560"W	1.47	
4499.00	0.990	212.970	4462.75	0.20	-440.46	-13.03	40°13'24.067"N	104°56'25.568"W	1.03	
4688.00	1.060	232.110	4651.72	-2.00	-442.91	-15.30	40°13'24.043"N	104°56'25.597"W	0.18	
4782.00	0.340	275.860	4745.71	-2.95	-443.41	-16.26	40°13'24.038"N	104°56'25.610"W	0.90	
5160.00	0.370	287.610	5123.70	-5.24	-442.93	-18.54	40°13'24.043"N	104°56'25.639"W	0.02	
5537.00	1.100	210.950	5500.68	-8.18	-445.66	-21.56	40°13'24.016"N	104°56'25.678"W	0.29	
5632.00	0.300	192.650	5595.67	-8.67	-446.69	-22.09	40°13'24.006"N	104°56'25.685"W	0.86	
5821.00	0.720	291.290	5784.66	-9.88	-446.74	-23.30	40°13'24.005"N	104°56'25.700"W	0.43	
6009.00	1.040	271.390	5972.64	-12.70	-446.27	-26.11	40°13'24.010"N	104°56'25.737"W	0.23	
6293.00	0.610	287.370	6256.61	-16.73	-445.76	-30.13	40°13'24.015"N	104°56'25.672"W	0.17	
6387.00	0.470	259.090	6350.61	-17.59	-445.68	-30.98	40°13'24.016"N	104°56'25.799"W	0.32	
6434.00	1.750	81.990	6397.60	-17.07	-445.62	-30.46	40°13'24.016"N	104°56'25.793"W	4.72	
6482.00	5.570	86.440	6445.49	-14.03	-445.37	-27.41	40°13'24.019"N	104°56'25.753"W	7.97	
6529.00	9.910	92.100	6492.06	-7.71	-445.38	-21.09	40°13'24.019"N	104°56'25.672"W	9.36	
6576.00	13.730	92.250	6538.05	1.92	-445.74	-11.47	40°13'24.015"N	104°56'25.548"W	8.13	
6623.00	17.840	92.240	6583.27	14.70	-446.24	1.30	40°13'24.010"N	104°56'25.383"W	8.74	
6670.00	21.840	91.920	6627.47	30.65	-446.82	17.24	40°13'24.005"N	104°56'25.178"W	8.51	
6717.00	26.310	90.710	6670.37	49.81	-447.24	36.40	40°13'24.000"N	104°56'24.931"W	9.57	
6764.00	30.150	89.870	6711.77	72.03	-447.34	58.63	40°13'23.999"N	104°56'24.644"W	8.21	
6811.00	34.500	88.920	6751.48	97.14	-447.07	83.75	40°13'24.002"N	104°56'24.320"W	9.32	
6859.00	39.480	90.280	6789.81	125.99	-446.88	112.62	40°13'24.004"N	104°56'23.948"W	10.51	
6953.00	52.610	89.970	6854.91	193.48	-447.01	180.14	40°13'24.003"N	104°56'23.078"W	13.97	
7000.00	59.900	89.640	6881.00	232.51	-446.87	219.20	40°13'24.004"N	104°56'22.574"W	15.52	
7048.00	63.990	89.780	6903.57	274.84	-446.66	261.55	40°13'24.006"N	104°56'22.028"W	8.52	
7095.00	64.410	89.800	6924.03	317.13	-446.50	303.86	40°13'24.008"N	104°56'21.483"W	0.89	
7142.00	66.230	88.810	6943.65	359.80	-445.98	346.57	40°13'24.013"N	104°56'20.932"W	4.32	
7189.00	70.690	87.880	6960.90	403.43	-444.72	390.25	40°13'24.025"N	104°56'20.369"W	9.67	
7236.00	75.570	87.430	6974.54	448.28	-442.87	435.18	40°13'24.044"N	104°56'19.790"W	10.42	
7283.00	79.800	87.460	6984.56	494.06	-440.83	481.04	40°13'24.064"N	104°56'19.199"W	9.00	
7331.00	82.870	88.010	6991.79	541.39	-438.95	528.45	40°13'24.082"N	104°56'18.587"W	6.50	
7362.00	85.030	88.950	6995.06	572.16	-438.14	559.26	40°13'24.090"N	104°56'18.190"W	7.59	
7419.00†	87.319	89.287	6998.86	628.97	-437.26	616.13	40°13'24.099"N	104°56'17.457"W	4.06	7" CASING POINT
7484.00	89.930	89.670	7000.42	693.90	-436.67	681.10	40°13'24.105"N	104°56'16.619"W	4.06	
7578.00	89.840	89.030	7000.61	787.82	-435.60	775.09	40°13'24.115"N	104°56'15.408"W	0.69	
7673.00	89.900	88.750	7000.83	882.70	-433.76	870.07	40°13'24.133"N	104°56'14.183"W	0.30	
7767.00	89.560	88.880	7001.27	976.58	-431.82	964.05	40°13'24.153"N	104°56'12.972"W	0.39	
7861.00	90.030	88.950	7001.61	1070.47	-430.04	1058.04	40°13'24.170"N	104°56'11.760"W	0.51	
7956.00	89.870	88.890	7001.69	1165.35	-428.25	1153.02	40°13'24.188"N	104°56'10.536"W	0.18	
8050.00	90.120	88.920	7001.70	1259.24	-426.45	1247.00	40°13'24.206"N	104°56'09.324"W	0.27	
8144.00	90.640	88.970	7001.07	1353.13	-424.72	1340.98	40°13'24.223"N	104°56'08.112"W	0.56	
8239.00	90.520	88.870	7000.11	1448.01	-422.93	1435.96	40°13'24.240"N	104°56'06.888"W	0.16	
8333.00	90.770	88.930	6999.05	1541.89	-421.13	1529.94	40°13'24.258"N	104°56'05.676"W	0.27	
8427.00	89.900	88.470	6998.50	1635.76	-418.99	1623.91	40°13'24.279"N	104°56'04.465"W	1.05	

Actual Wellpath Report

SEKICH STATE 39N-17HZ AWP

Page 4 of 7

REFERENCE WELLPATH IDENTIFICATION				
Operator	KERR-MCGEE OIL & GAS ONSHORE LP	Slot	SLOT#43 SEKICH STATE 39N-17HZ (2000'FSL & 380'FWL, SEC.18)	
Area	COLORADO	Well	SEKICH STATE 39N-17HZ	
Field	WELD COUNTY (KERR MCGEE)	Wellbore	SEKICH STATE 39N-17HZ AWP	
Facility	SEC.18-T3N-R67W			

WELLPATH DATA (180 stations)										
MD [ft]	Inclination [°]	Azimuth [°]	TVD [ft]	Vert Sect [ft]	North [ft]	East [ft]	Latitude	Longitude	DLS [°/100ft]	Comments
8522.00	90.270	88.560	6998.36	1730.61	-416.53	1718.88	40°13'24.303"N	104°56'03.241"W	0.40	
8616.00	90.640	88.510	6997.62	1824.46	-414.13	1812.85	40°13'24.327"N	104°56'02.029"W	0.40	
8710.00	90.090	88.470	6997.02	1918.31	-411.65	1906.81	40°13'24.351"N	104°56'00.818"W	0.59	
8805.00	91.410	88.530	6995.77	2013.15	-409.17	2001.77	40°13'24.376"N	104°55'59.594"W	1.39	
8899.00	90.830	89.030	6993.94	2107.00	-407.16	2095.73	40°13'24.396"N	104°55'58.382"W	0.81	
8994.00	89.870	88.740	6993.36	2201.89	-405.32	2190.71	40°13'24.414"N	104°55'57.158"W	1.06	
9088.00	89.130	89.190	6994.18	2295.77	-403.62	2284.69	40°13'24.430"N	104°55'55.946"W	0.92	
9183.00	89.530	89.220	6995.29	2390.67	-402.30	2379.67	40°13'24.443"N	104°55'54.722"W	0.42	
9277.00	89.930	89.160	6995.73	2484.58	-400.97	2473.66	40°13'24.456"N	104°55'53.510"W	0.43	
9372.00	88.950	88.930	6996.66	2579.47	-399.39	2568.64	40°13'24.472"N	104°55'52.286"W	1.06	
9466.00	89.900	89.050	6997.60	2673.36	-397.73	2662.62	40°13'24.488"N	104°55'51.074"W	1.02	
9558.00	90.730	88.980	6997.10	2765.25	-396.15	2754.61	40°13'24.504"N	104°55'49.888"W	0.91	
9651.00	89.380	89.350	6997.01	2858.16	-394.79	2847.59	40°13'24.517"N	104°55'48.690"W	1.51	
9744.00	89.780	89.390	6997.69	2951.08	-393.77	2940.58	40°13'24.527"N	104°55'47.491"W	0.43	
9838.00	90.090	89.350	6997.80	3045.00	-392.74	3034.58	40°13'24.537"N	104°55'46.279"W	0.33	
9930.00	90.860	89.270	6997.03	3136.91	-391.63	3126.57	40°13'24.548"N	104°55'45.093"W	0.84	
10023.00	90.430	89.970	6995.99	3229.85	-391.01	3219.56	40°13'24.554"N	104°55'43.894"W	0.88	
10116.00	90.150	91.930	6995.52	3322.83	-392.56	3312.54	40°13'24.539"N	104°55'42.696"W	2.13	
10209.00	90.210	93.220	6995.22	3415.82	-396.73	3405.44	40°13'24.497"N	104°55'41.498"W	1.39	
10302.00	91.470	93.180	6993.86	3508.78	-401.92	3498.29	40°13'24.446"N	104°55'40.301"W	1.36	
10396.00	90.800	93.400	6992.00	3602.72	-407.32	3592.11	40°13'24.392"N	104°55'39.091"W	0.75	
10489.00	90.270	93.300	6991.13	3695.68	-412.75	3684.95	40°13'24.338"N	104°55'37.895"W	0.58	
10582.00	90.580	94.320	6990.44	3788.61	-418.93	3777.74	40°13'24.277"N	104°55'36.698"W	1.15	
10676.00	88.790	93.510	6990.96	3882.54	-425.35	3871.52	40°13'24.214"N	104°55'35.489"W	2.09	
10769.00	89.660	93.640	6992.21	3975.48	-431.15	3964.33	40°13'24.156"N	104°55'34.293"W	0.95	
10863.00	89.900	92.980	6992.58	4069.44	-436.58	4058.17	40°13'24.103"N	104°55'33.083"W	0.75	
10956.00	90.490	93.110	6992.26	4162.42	-441.52	4151.03	40°13'24.054"N	104°55'31.886"W	0.65	
11049.00	90.430	93.570	6991.51	4255.38	-446.93	4243.87	40°13'24.000"N	104°55'30.689"W	0.50	
11143.00	90.580	92.240	6990.68	4349.35	-451.70	4337.75	40°13'23.953"N	104°55'29.479"W	1.42	
11236.00	90.270	93.370	6989.99	4442.33	-456.25	4430.63	40°13'23.907"N	104°55'28.281"W	1.26	
11329.00	89.690	92.630	6990.03	4535.31	-461.12	4523.50	40°13'23.859"N	104°55'27.084"W	1.01	
11422.00	89.720	92.690	6990.51	4628.29	-465.43	4616.40	40°13'23.816"N	104°55'25.887"W	0.07	
11514.00	90.000	92.750	6990.73	4720.28	-469.80	4708.30	40°13'23.773"N	104°55'24.702"W	0.31	
11606.00	90.030	93.090	6990.71	4812.26	-474.48	4800.18	40°13'23.727"N	104°55'23.517"W	0.37	
11698.00	89.810	92.070	6990.83	4904.25	-478.63	4892.08	40°13'23.685"N	104°55'22.333"W	1.13	
11790.00	90.270	92.270	6990.77	4996.24	-482.11	4984.02	40°13'23.651"N	104°55'21.147"W	0.55	
11882.00	89.290	91.990	6991.12	5088.24	-485.53	5075.95	40°13'23.617"N	104°55'19.962"W	1.11	
11974.00	89.900	92.410	6991.77	5180.23	-489.06	5167.88	40°13'23.582"N	104°55'18.777"W	0.81	
12066.00	90.580	92.650	6991.39	5272.22	-493.12	5259.79	40°13'23.541"N	104°55'17.592"W	0.78	
12157.00	89.590	92.670	6991.25	5363.21	-497.34	5350.69	40°13'23.500"N	104°55'16.420"W	1.09	
12249.00	90.240	92.910	6991.39	5455.19	-501.82	5442.58	40°13'23.455"N	104°55'15.236"W	0.75	
12344.00	89.260	92.890	6991.80	5550.17	-506.63	5537.46	40°13'23.407"N	104°55'14.013"W	1.03	
12438.00	90.030	93.150	6992.39	5644.14	-511.58	5631.32	40°13'23.358"N	104°55'12.803"W	0.86	
12532.00	89.010	93.170	6993.17	5738.11	-516.76	5725.18	40°13'23.307"N	104°55'11.593"W	1.09	
12627.00	89.160	92.650	6994.69	5833.07	-521.58	5820.04	40°13'23.259"N	104°55'10.370"W	0.57	

Actual Wellpath Report

SEKICH STATE 39N-17HZ AWP

Page 5 of 7

REFERENCE WELLPATH IDENTIFICATION			
Operator	KERR-MCGEE OIL & GAS ONSHORE LP	Slot	SLOT#43 SEKICH STATE 39N-17HZ (2000'FSL & 380'FWL, SEC.18)
Area	COLORADO	Well	SEKICH STATE 39N-17HZ
Field	WELD COUNTY (KERR MCGEE)	Wellbore	SEKICH STATE 39N-17HZ AWB
Facility	SEC.18-T3N-R67W		

WELLPATH DATA (180 stations)

MD [ft]	Inclination [°]	Azimuth [°]	TVD [ft]	Vert Sect [ft]	North [ft]	East [ft]	Latitude	Longitude	DLS [°/100ft]	Comments
12721.00	89.750	92.630	6995.59	5927.06	-525.91	5913.94	40°13'23.216"N	104°55'09.159"W	0.63	
12816.00	89.930	92.350	6995.85	6022.05	-530.04	6008.85	40°13'23.175"N	104°55'07.936"W	0.35	
12910.00	91.350	93.230	6994.80	6116.02	-534.62	6102.73	40°13'23.130"N	104°55'06.726"W	1.78	
13004.00	89.260	92.730	6994.30	6209.99	-539.50	6196.59	40°13'23.081"N	104°55'05.515"W	2.29	
13099.00	89.220	92.990	6995.56	6304.97	-544.24	6291.47	40°13'23.034"N	104°55'04.292"W	0.28	
13193.00	89.930	93.130	6996.26	6398.94	-549.26	6385.33	40°13'22.984"N	104°55'03.082"W	0.77	
13287.00	90.550	93.690	6995.86	6492.89	-554.85	6479.16	40°13'22.929"N	104°55'01.873"W	0.89	
13382.00	90.180	93.060	6995.26	6587.85	-560.44	6573.99	40°13'22.873"N	104°55'00.650"W	0.77	
13476.00	90.360	91.960	6994.82	6681.84	-564.56	6667.90	40°13'22.832"N	104°54'59.440"W	1.19	
13570.00	90.860	90.630	6993.81	6775.83	-566.68	6761.87	40°13'22.811"N	104°54'58.228"W	1.51	
13665.00	90.330	89.870	6992.83	6870.79	-567.10	6856.86	40°13'22.807"N	104°54'57.004"W	0.98	
13759.00	88.950	89.020	6993.42	6964.71	-566.19	6950.85	40°13'22.815"N	104°54'55.792"W	1.72	
13853.00	88.790	88.090	6995.27	7058.55	-563.82	7044.80	40°13'22.838"N	104°54'54.581"W	1.00	
13948.00	88.920	86.740	6997.17	7153.26	-559.53	7139.68	40°13'22.881"N	104°54'53.358"W	1.43	
14042.00	88.920	85.740	6998.94	7246.82	-553.37	7233.46	40°13'22.941"N	104°54'52.149"W	1.06	
14137.00	89.190	85.680	7000.51	7341.28	-546.27	7328.19	40°13'23.011"N	104°54'50.927"W	0.29	
14231.00	89.350	84.950	7001.71	7434.69	-538.59	7421.86	40°13'23.087"N	104°54'49.720"W	0.79	
14325.00	90.400	86.040	7001.91	7528.13	-531.21	7515.57	40°13'23.159"N	104°54'48.512"W	1.61	
14420.00	91.290	86.380	7000.51	7622.68	-524.93	7610.35	40°13'23.221"N	104°54'47.290"W	1.00	
14514.00	90.330	86.240	6999.18	7716.25	-518.88	7704.15	40°13'23.281"N	104°54'46.081"W	1.03	
14608.00	90.090	86.700	6998.84	7809.85	-513.09	7797.97	40°13'23.338"N	104°54'44.871"W	0.55	
14703.00	90.550	85.190	6998.31	7904.37	-506.37	7892.72	40°13'23.404"N	104°54'43.649"W	1.66	
14797.00	89.470	83.940	6998.29	7997.63	-497.47	7986.30	40°13'23.491"N	104°54'42.443"W	1.76	
14844.00	89.440	83.480	6998.74	8044.17	-492.32	8033.01	40°13'23.542"N	104°54'41.841"W	0.98	
14892.00	90.120	83.610	6998.92	8091.68	-486.92	8080.71	40°13'23.595"N	104°54'41.226"W	1.44	
14986.00	89.410	82.870	6999.31	8184.65	-475.86	8174.05	40°13'23.704"N	104°54'40.022"W	1.09	
15080.00	89.500	83.140	7000.20	8277.56	-464.41	8267.35	40°13'23.817"N	104°54'38.820"W	0.30	
15174.00	89.260	84.640	7001.22	8370.68	-454.41	8360.81	40°13'23.916"N	104°54'37.615"W	1.62	
15269.00	89.220	86.100	7002.48	8465.08	-446.74	8455.49	40°13'23.991"N	104°54'36.394"W	1.54	
15363.00	89.530	87.300	7003.50	8558.72	-441.33	8549.32	40°13'24.044"N	104°54'35.184"W	1.32	
15457.00	89.690	88.680	7004.14	8652.51	-438.03	8643.26	40°13'24.076"N	104°54'33.973"W	1.48	
15552.00	90.060	89.090	7004.35	8747.40	-436.18	8738.24	40°13'24.094"N	104°54'32.749"W	0.58	
15646.00	90.180	89.130	7004.16	8841.30	-434.72	8832.23	40°13'24.109"N	104°54'31.537"W	0.13	
15740.00	90.670	90.450	7003.46	8935.24	-434.38	8926.22	40°13'24.112"N	104°54'30.325"W	1.50	
15835.00	91.440	90.860	7001.71	9030.21	-435.47	9021.20	40°13'24.101"N	104°54'29.101"W	0.92	
15929.00	90.610	90.990	7000.03	9124.18	-436.98	9115.17	40°13'24.085"N	104°54'27.890"W	0.89	
16023.00	90.210	91.190	6999.35	9218.17	-438.77	9209.15	40°13'24.067"N	104°54'26.678"W	0.48	
16118.00	90.180	90.870	6999.03	9313.17	-440.48	9304.14	40°13'24.050"N	104°54'25.454"W	0.34	
16212.00	90.770	91.380	6998.25	9407.16	-442.32	9398.11	40°13'24.031"N	104°54'24.242"W	0.83	
16307.00	91.630	91.820	6996.26	9502.13	-444.98	9493.06	40°13'24.005"N	104°54'23.018"W	1.02	
16401.00	90.830	91.070	6994.24	9596.11	-447.35	9587.00	40°13'23.981"N	104°54'21.807"W	1.17	
16496.00	90.490	90.460	6993.15	9691.09	-448.61	9681.99	40°13'23.968"N	104°54'20.582"W	0.74	
16590.00	90.370	90.050	6992.44	9785.06	-449.03	9775.98	40°13'23.964"N	104°54'19.371"W	0.45	
16673.00	91.600	90.490	6991.02	9868.02	-449.42	9858.97	40°13'23.959"N	104°54'18.301"W	1.57	LAST BHI MWD+IFR SURVEY
16745.00	91.600	90.490	6989.01	9939.97	-450.04	9930.94	40°13'23.953"N	104°54'17.373"W	0.00	PROJECTION TO BIT

Actual Wellpath Report

SEKICH STATE 39N-17HZ AWP

Page 6 of 7

REFERENCE WELLPATH IDENTIFICATION

Operator	KERR-MCGEE OIL & GAS ONSHORE LP	Slot	SLOT#43 SEKICH STATE 39N-17HZ (2000'FSL & 380'FWL, SEC.18)
Area	COLORADO	Well	SEKICH STATE 39N-17HZ
Field	WELD COUNTY (KERR MCGEE)	Wellbore	SEKICH STATE 39N-17HZ AWB
Facility	SEC.18-T3N-R67W		

HOLE & CASING SECTIONS - Ref Wellbore: SEKICH STATE 39N-17HZ AWB Ref Wellpath: SEKICH STATE 39N-17HZ AWP

String/Diameter	Start MD [ft]	End MD [ft]	Interval [ft]	Start TVD [ft]	End TVD [ft]	Start N/S [ft]	Start E/W [ft]	End N/S [ft]	End E/W [ft]
13.5in Open Hole	25.00	1238.00	1213.00	25.00	1237.98	0.00	0.00	2.93	-1.58
9.625in Casing Surface	25.00	1226.00	1201.00	25.00	1225.98	0.00	0.00	2.91	-1.51
8.75in Open Hole	1238.00	7428.00	6190.00	1237.98	6999.25	2.93	-1.58	-437.15	625.12
7in Casing Intermediate	25.00	7419.00	7394.00	25.00	6998.86	0.00	0.00	-437.26	616.13
6.125in Open Hole	7428.00	16745.00	9317.00	6999.25	6989.01	-437.15	625.12	-450.04	9930.94

TARGETS

Name	MD [ft]	TVD [ft]	North [ft]	East [ft]	Grid East [US ft]	Grid North [US ft]	Latitude	Longitude	Shape
SEC.17-T3N-R67W SECTION LINES		6.00	60.11	0.23	3156259.63	1325202.85	40°13'29.014"N	104°56'25.397"W	polygon
SEC.18-T3N-R67W SECTION LINES		27.00	2483.07	4188.47	3160432.31	1327652.08	40°13'52.954"N	104°55'31.397"W	polygon
SEKICH STATE 39N-17HZ BHL ON PLAT REV-1 (1625'FSL & 50'FEL, SEC.17)		6980.00	-525.56	9930.64	3166193.10	1324679.89	40°13'23.207"N	104°54'17.377"W	point
SEKICH STATE 39N-17HZ BHL REV-2 (1425'FSL & 50'FEL, SEC.17)		6980.00	-725.56	9930.64	3166194.36	1324479.90	40°13'21.230"N	104°54'17.378"W	point
SEKICH STATE 39N-17HZ BHL REV-3 (1715'FSL & 50'FEL, SEC.17)		6980.00	-435.54	9930.64	3166192.53	1324769.90	40°13'24.096"N	104°54'17.377"W	point
SEKICH STATE 39N-17HZ LANDBOX		6980.00	0.00	0.00	3156259.78	1325142.74	40°13'28.420"N	104°56'25.400"W	polygon

WELLPATH COMPOSITION - Ref Wellbore: SEKICH STATE 39N-17HZ AWB Ref Wellpath: SEKICH STATE 39N-17HZ AWP

Start MD [ft]	End MD [ft]	Positional Uncertainty Model	Log Name/Comment	Wellbore
25.00	1139.00	Generic gyro - continuous (Standard)	MS ENERGY GYRO SURVEYS <125-1139>	SEKICH STATE 39N-17HZ AWB
1139.00	7362.00	NaviTrak (IFR)	BHI NAVITRAK MWD+IFR 8 3/4" <1312-7362>	SEKICH STATE 39N-17HZ AWB
7362.00	16673.00	NaviTrak (IFR)	BHI NAVITRAK MWD+IFR 6 1/8" <7484-16673>	SEKICH STATE 39N-17HZ AWB
16673.00	16745.00	Blind Drilling (std)	Projection to bit	SEKICH STATE 39N-17HZ AWB

REFERENCE WELLPATH IDENTIFICATION			
Operator	KERR-MCGEE OIL & GAS ONSHORE LP	Slot	SLOT#43 SEKICH STATE 39N-17HZ (2000'FSL & 380'FWL, SEC.18)
Area	COLORADO	Well	SEKICH STATE 39N-17HZ
Field	WELD COUNTY (KERR MCGEE)	Wellbore	SEKICH STATE 39N-17HZ AWB
Facility	SEC.18-T3N-R67W		

WELLPATH COMMENTS				
MD [ft]	Inclination [°]	Azimuth [°]	TVD [ft]	Comment
25.00	0.000	156.100	25.00	TIE ON
125.00	0.170	156.100	125.00	BEGIN GYRO SURVEYS
1139.00	0.360	217.380	1138.98	TIE ONTO GYRO SURVEYS
1312.00	0.620	315.700	1311.98	BEGIN BHI MWD+IFR SURVEYS
7419.00	87.319	89.287	6998.86	7" CASING POINT
16673.00	91.600	90.490	6991.02	LAST BHI MWD+IFR SURVEY
16745.00	91.600	90.490	6989.01	PROJECTION TO BIT