



CEMENT BOND LOG & V.D.L. GAMMA-RAY & C.C.L.

Pioneer Energy Services

Company RENEGADE OIL & GAS
Well STATE OF COLORADO "U" 2
Field LOWRY
County ARAPAHOE
State COLORADO

Company RENEGADE OIL & GAS
Well STATE OF COLORADO "U" 2
Field LOWRY
County ARAPAHOE
State COLORADO

Location: API # : 05005065600000

Other Services

SEC 30 TWP 5S RGE 64W

Permanent Datum	GL	Elevation	5965'
Log Measured From	KB		
Drilling Measured From	KB		

Elevation
K.B. 5965'
D.F. NA
G.L. 5965'

Date 6-3-13 6/13/13

Run Number	1	TWO	
Depth Driller	8615'	8615'	
Depth Logger	2426'	8554'	
Bottom Logged Interval	2414'	8536'	
Top Log Interval	SURFACE	7200'	
Open Hole Size	7 7/8"	7 7/8"	
Type Fluid	WATER	WATER	
Density / Viscosity			
Max. Recorded Temp.	NA	NA	
Estimated Cement Top	542'		
Time Well Ready	ROA		
Time Logger on Bottom	AM		
Equipment Number	24	9605	
Location	FT. MORGAN	FT MORGAN	
Recorded By	JOHN HOLLIS	TODD YOUNG	
Witnessed By	ED INGVE	ED INGVE	

Borehole Record		Tubing Record	
Run Number	Bit From To	Size	Weight From To

Casing Record	Size	Wgt/Ft	Top	Bottom
Surface String				
Prot. String				
Production String	5.5"	15.5#		
Liner				


<<< Fold Here >>>

All interpretations are opinions based on inferences from electrical or other measurements and we cannot and do not guarantee the accuracy or correctness of any interpretation, and we shall not, except in the case of gross or willful negligence on our part, be liable or responsible for any loss, costs, damages, or expenses incurred or sustained by anyone resulting from any interpretation made by any of our officers, agents or employees. These interpretations are also subject to our general terms and conditions set out in our current Price Schedule.

Comments

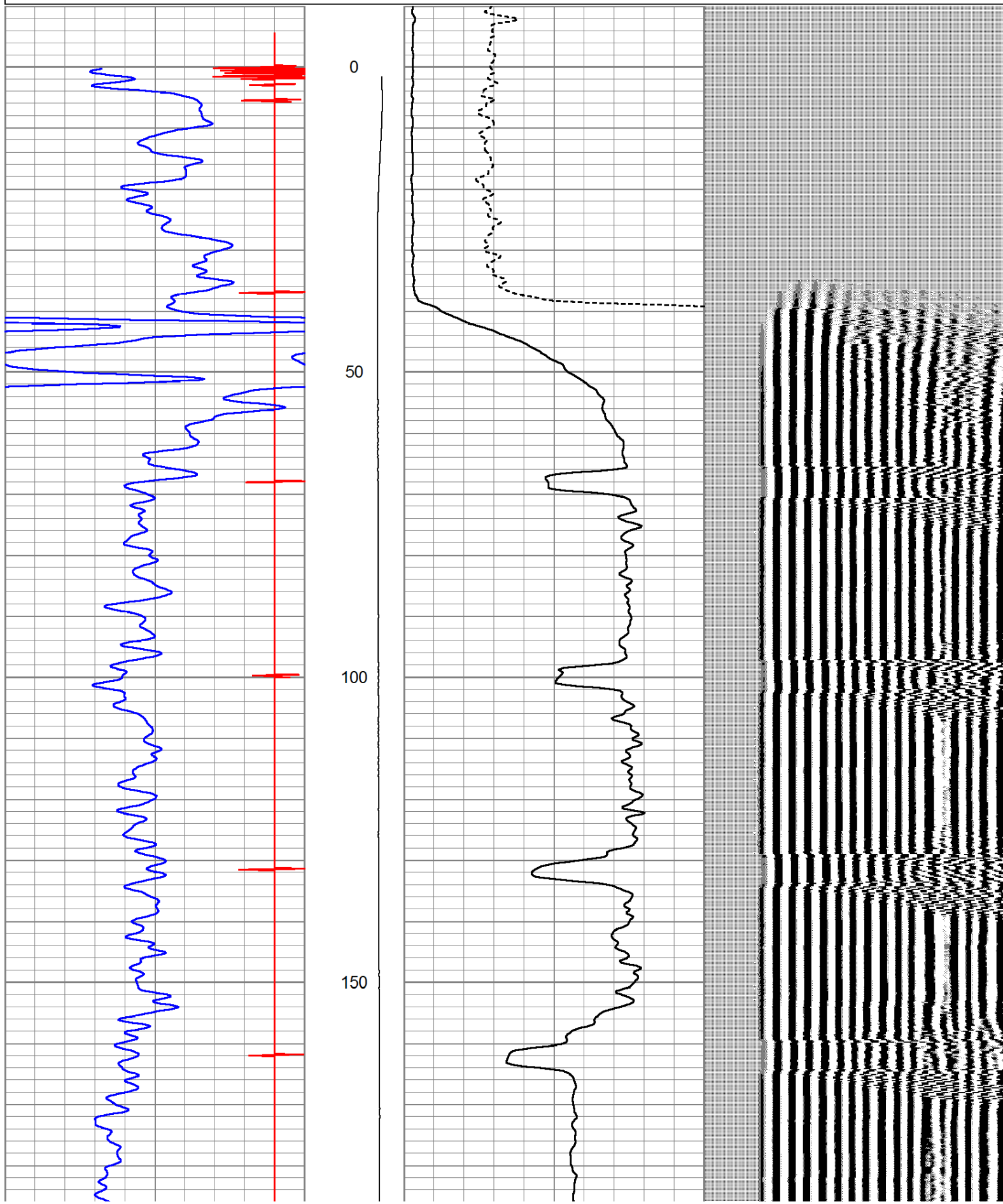
S.O.# 2-203950
CORRECTED 6 FEET TO GROUND LEVEL BEING ZERO
NORTH OF ROAD 50 & ROAD 107

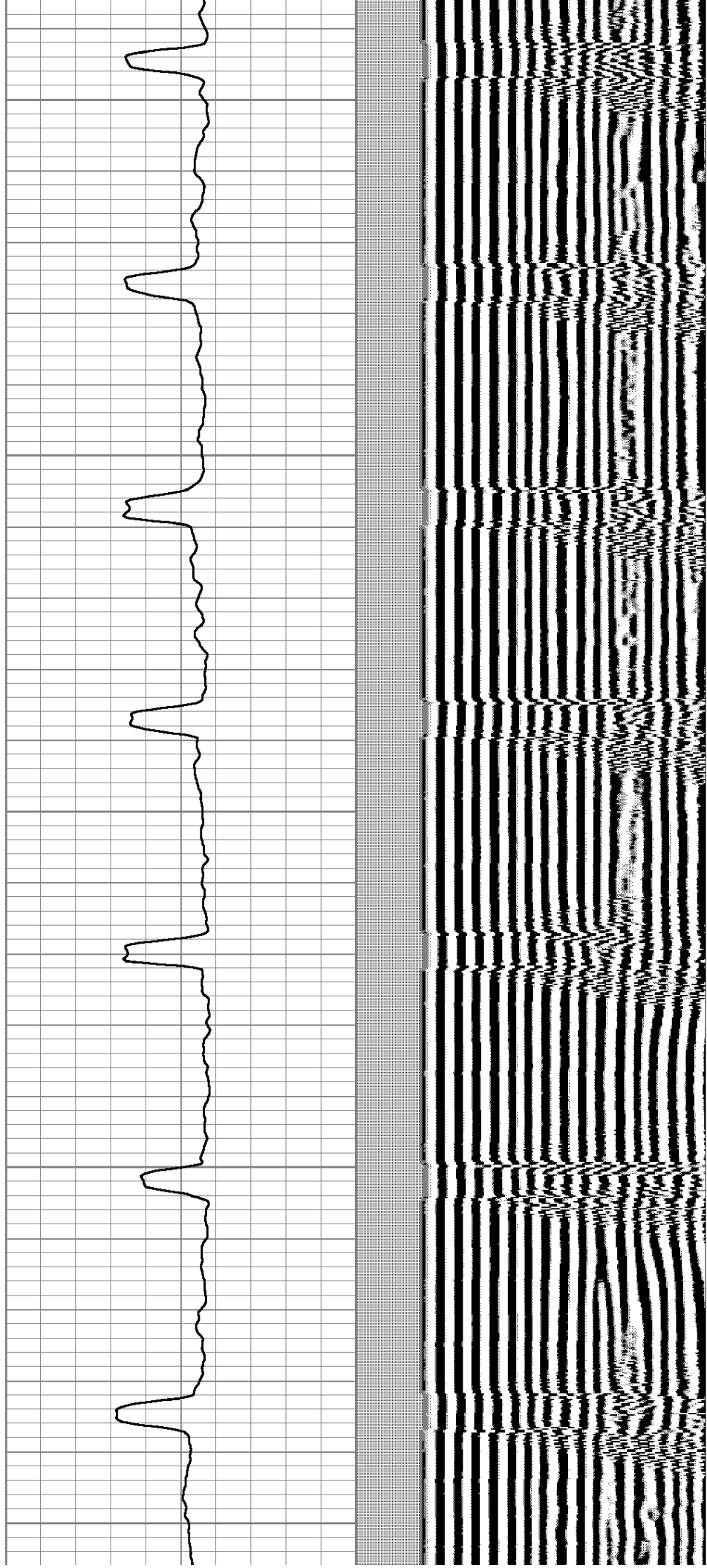
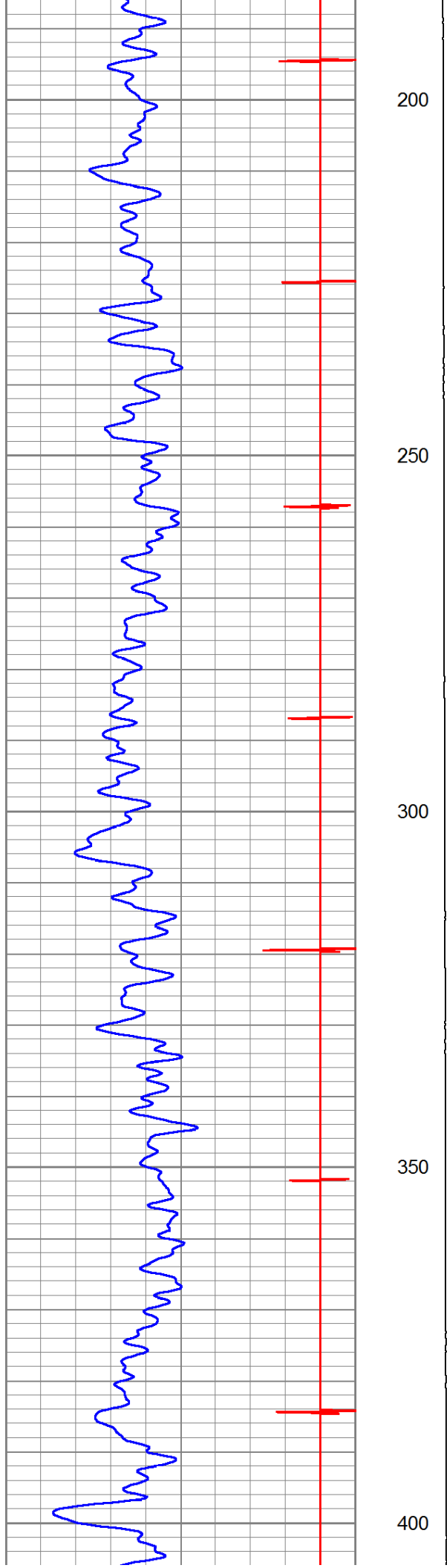
THANK YOU FOR USING PIONEER ENERGY SERVICES
PERF. 8513'-8538'
8488'-8493'

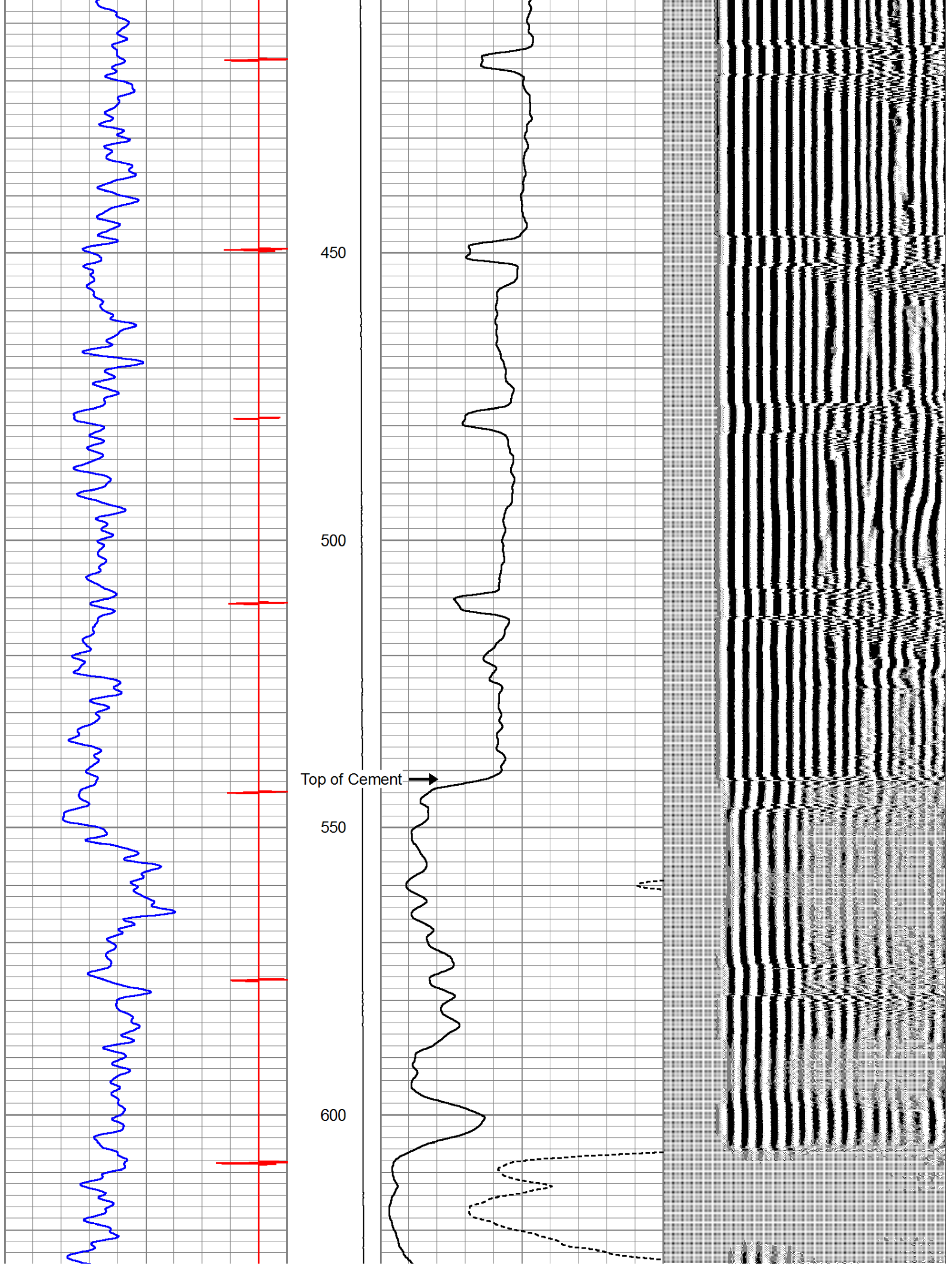
Sensor	Offset (ft)	Schematic	Description	Len (ft)	OD (in)	Wt (lb)
			SDSCHD Cable Head for Testing	1.00	1.44	1.00

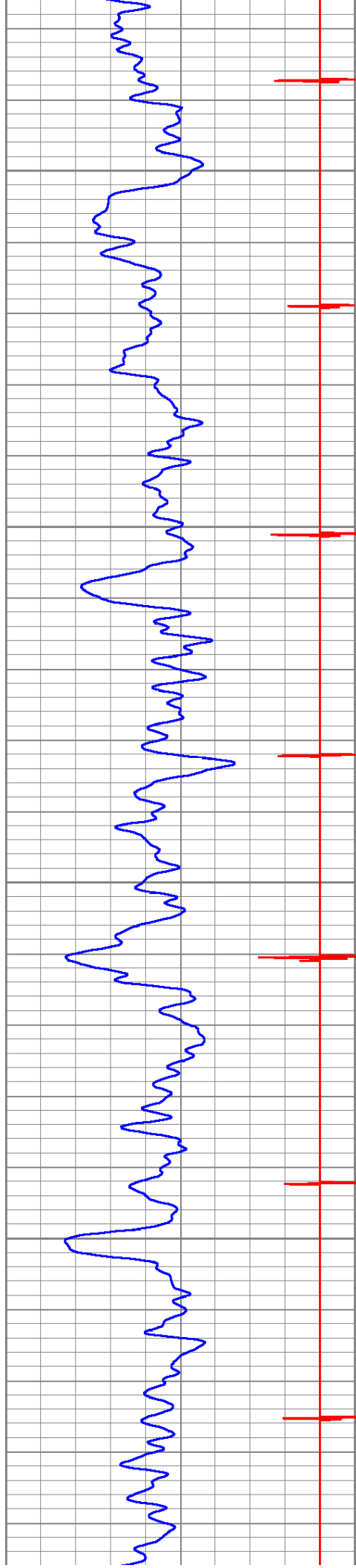
[illegible]

9	Collar Locator	-1	LTEN	0	Amplified Amplitude (mV)	10	200	Variable Density	1200
0	Gamma Ray (GAPI)	150	0 (lb)1000	0	Amplitude (mV)	100			







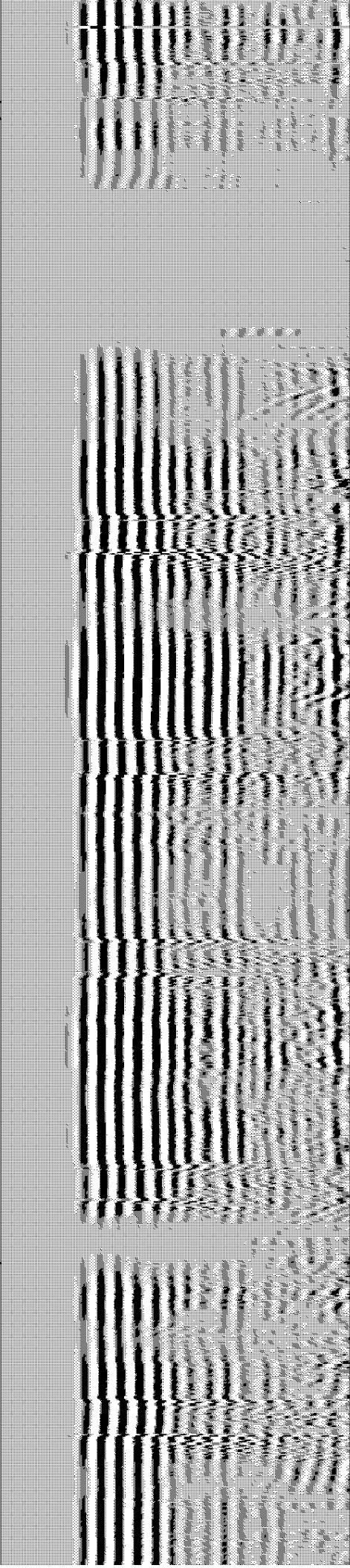
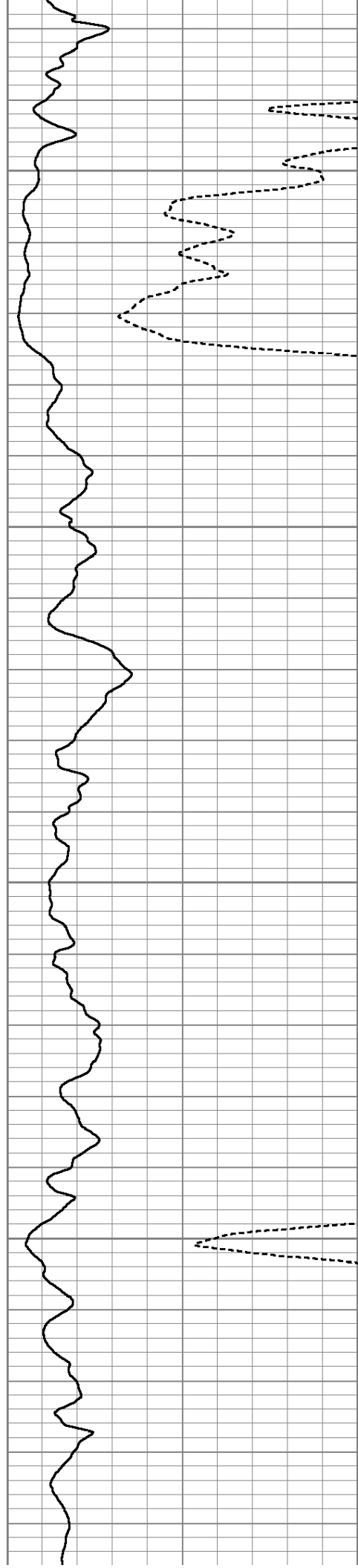


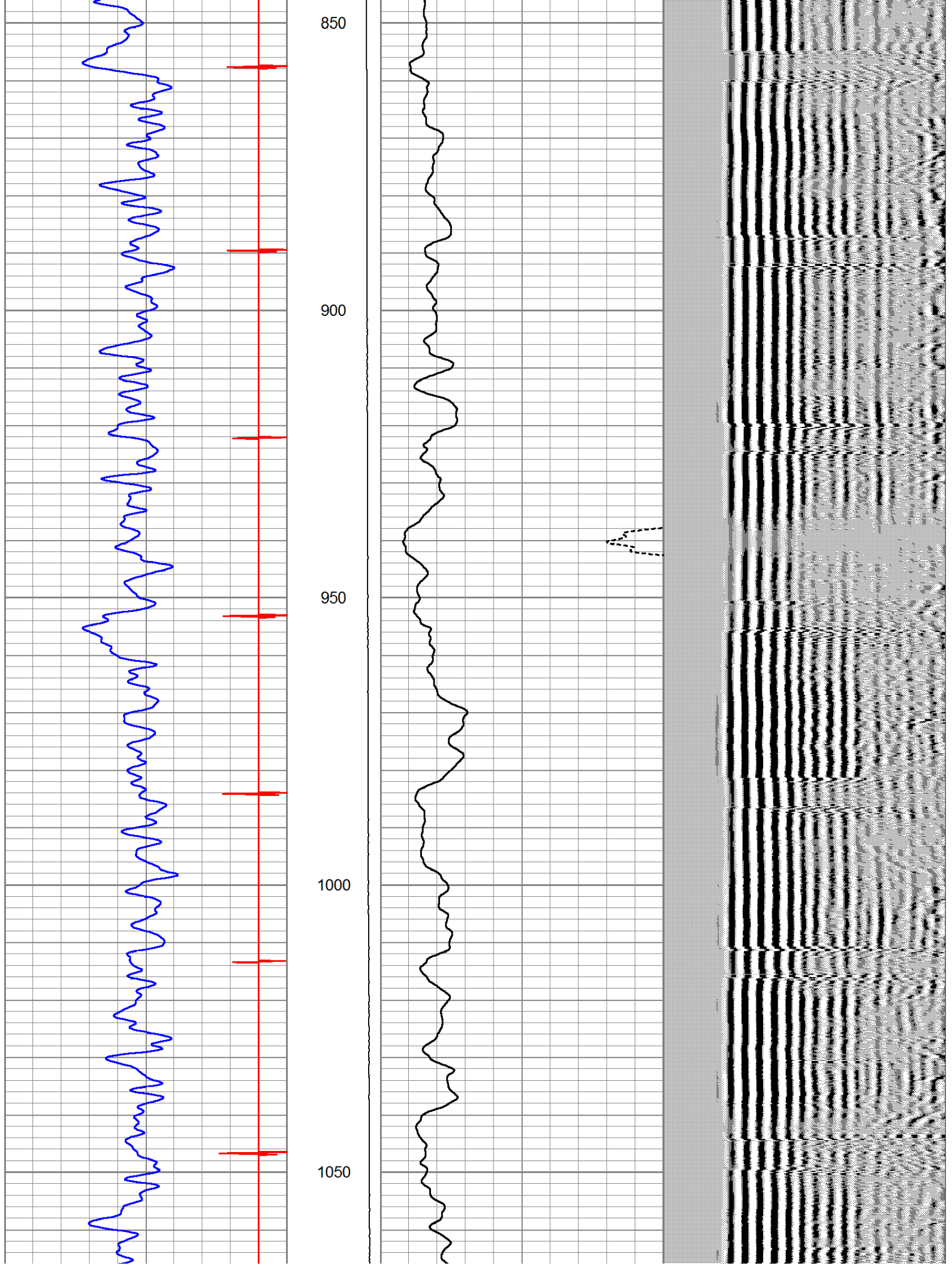
650

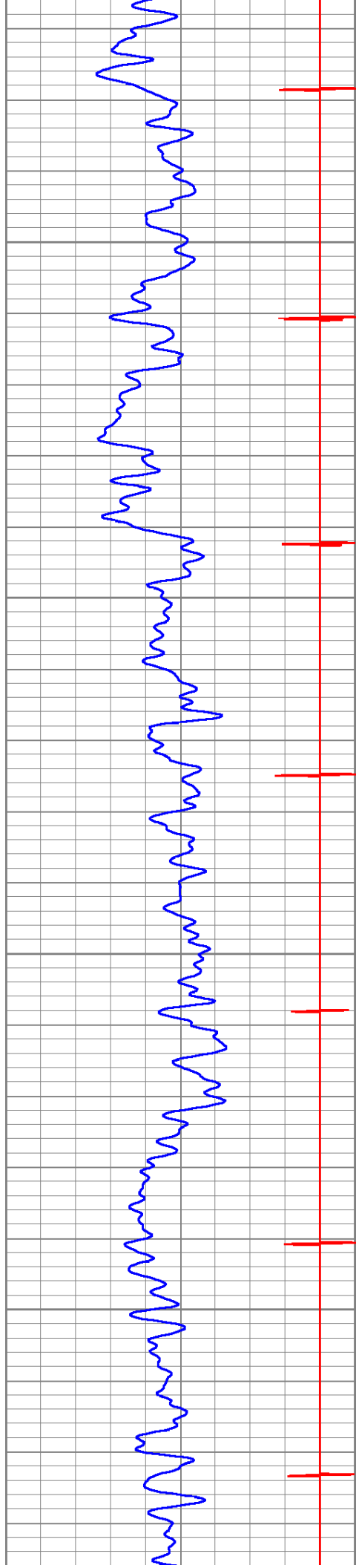
700

750

800





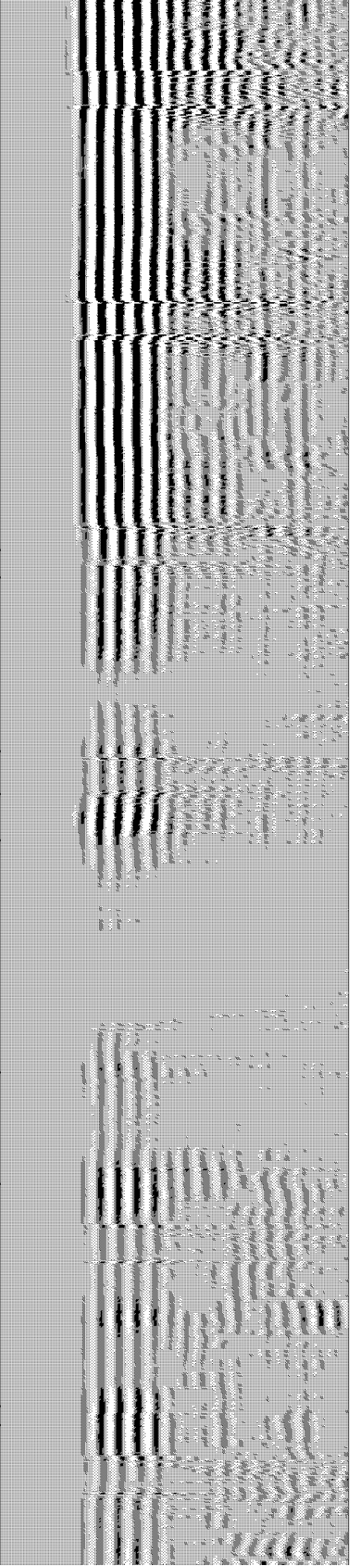
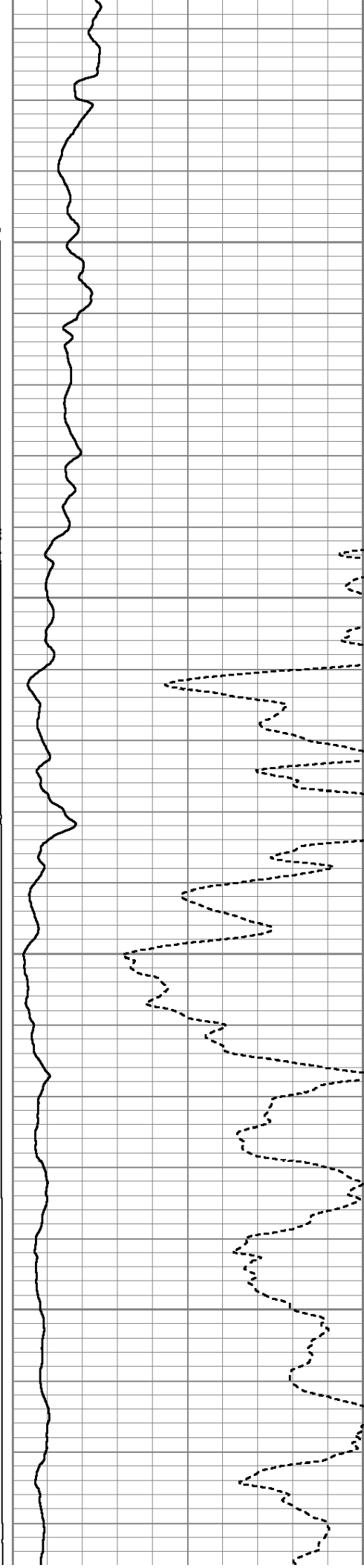


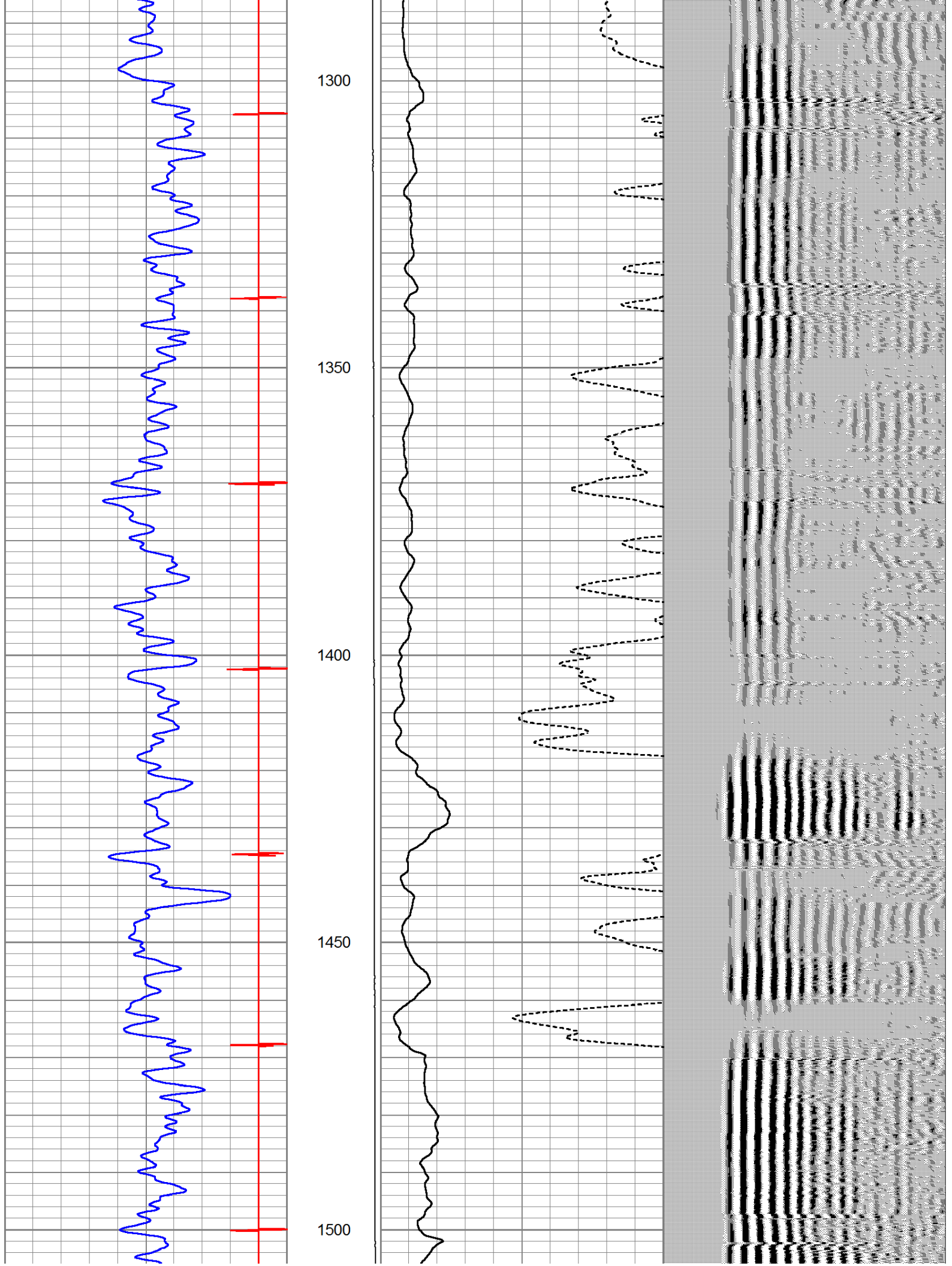
1100

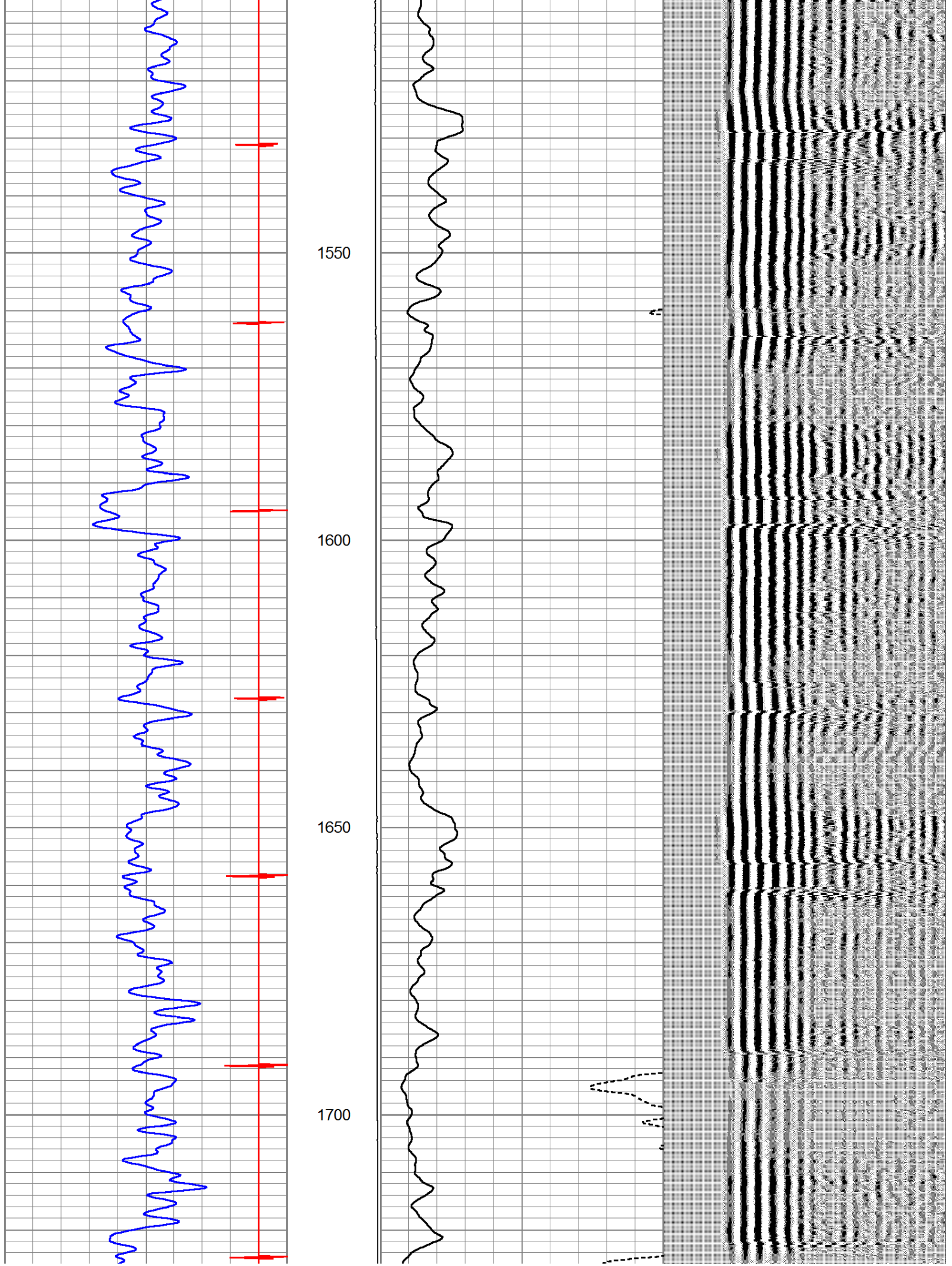
1150

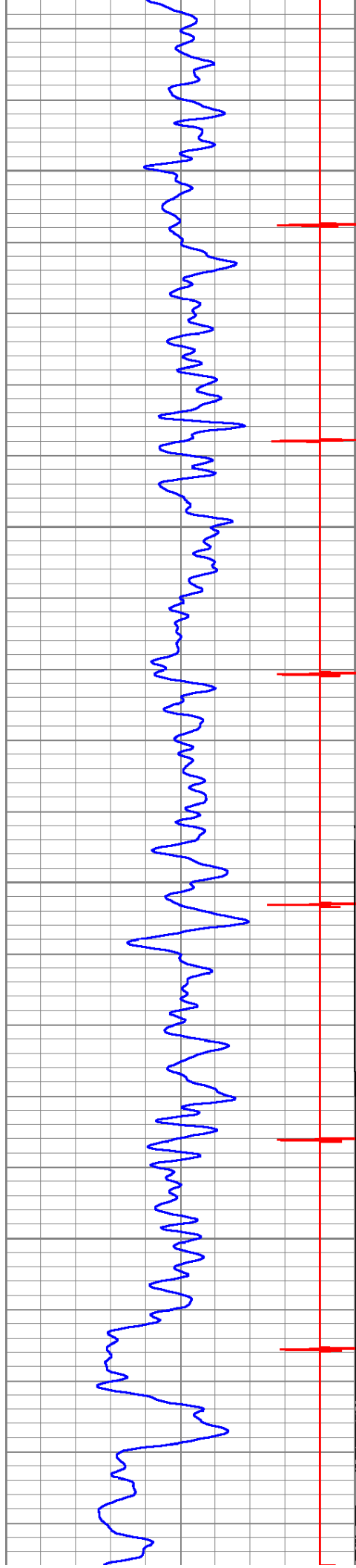
1200

1250







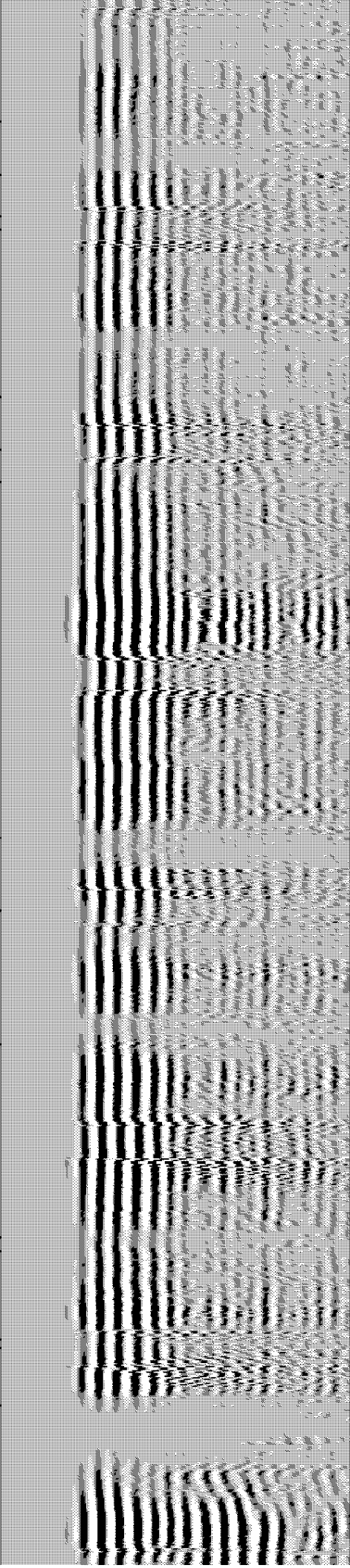
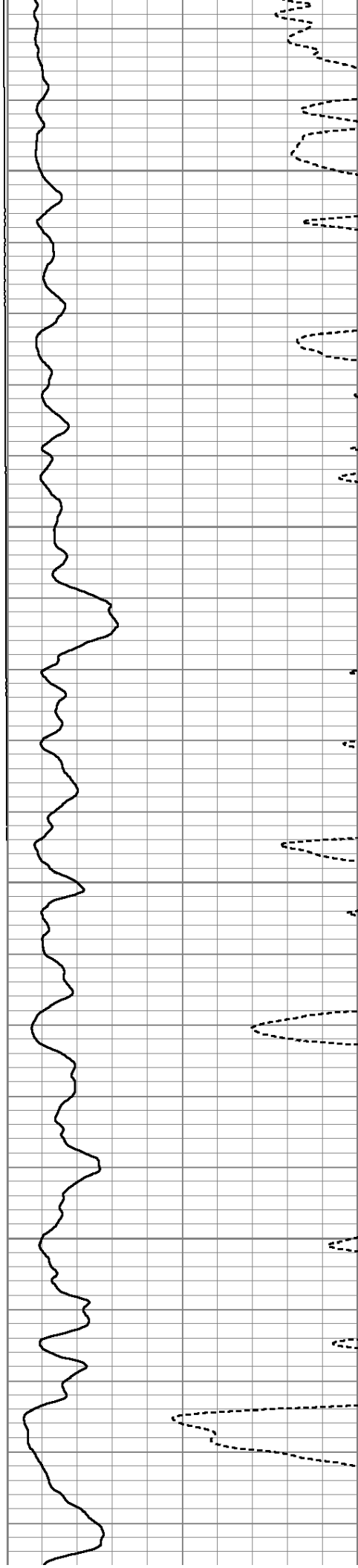


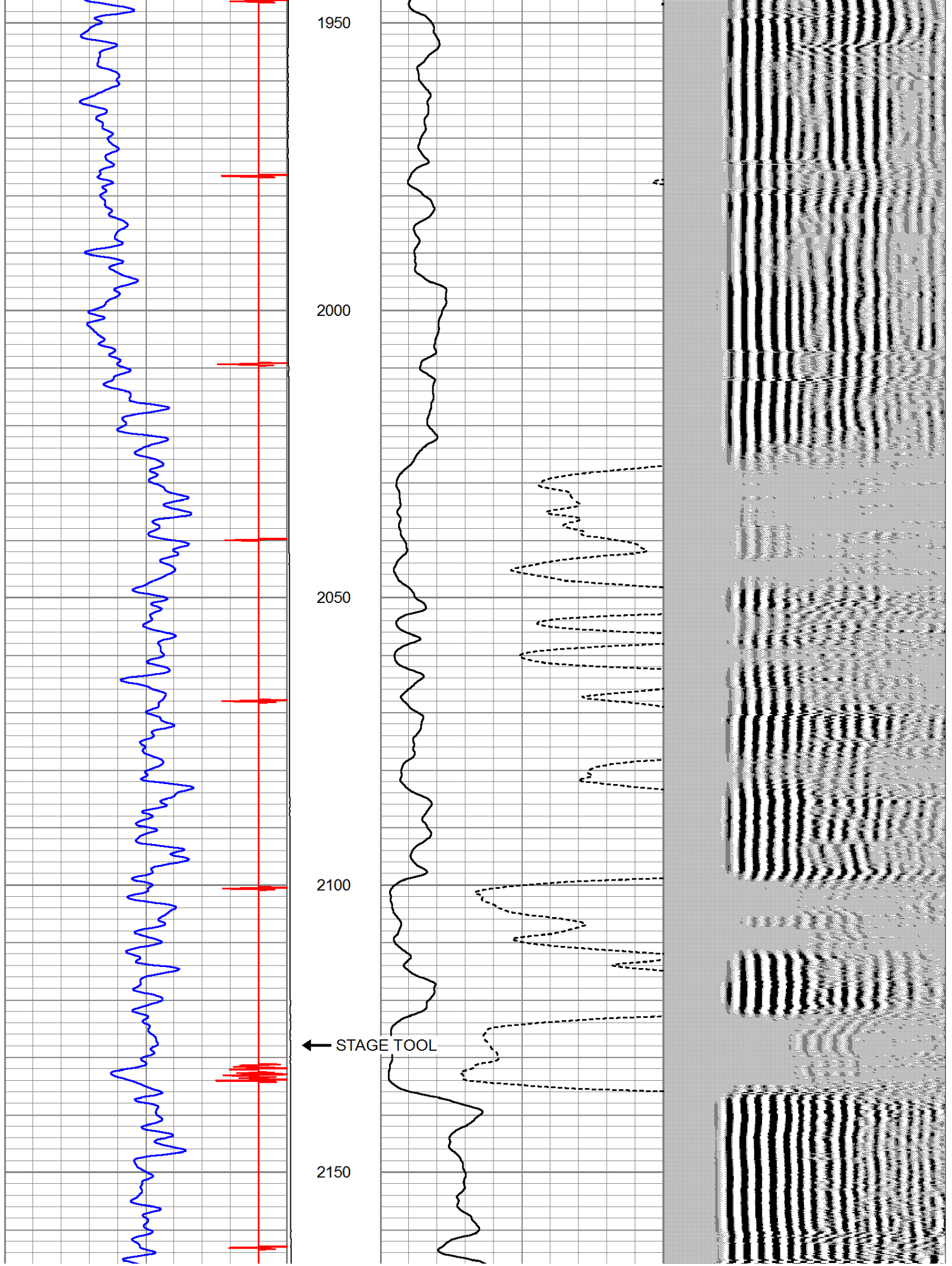
1750

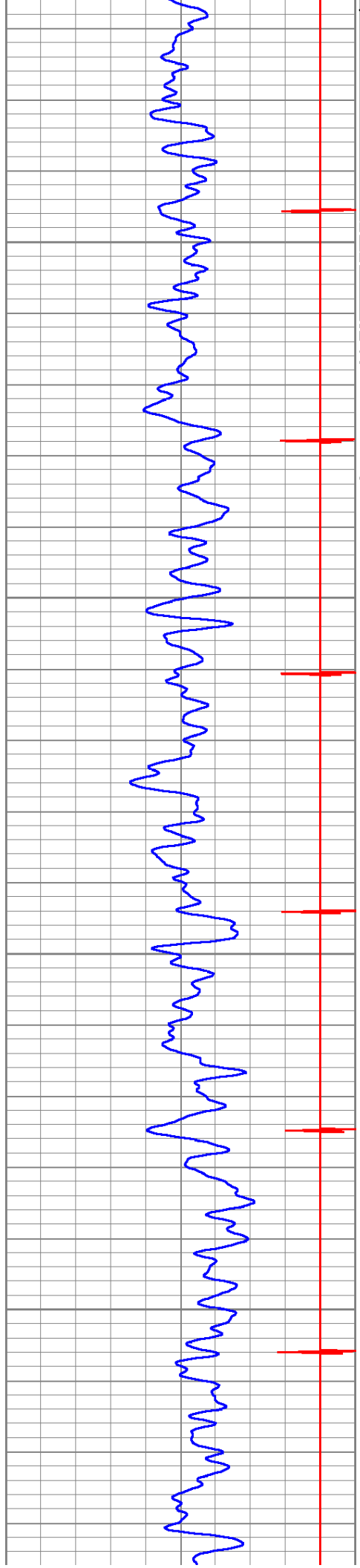
1800

1850

1900





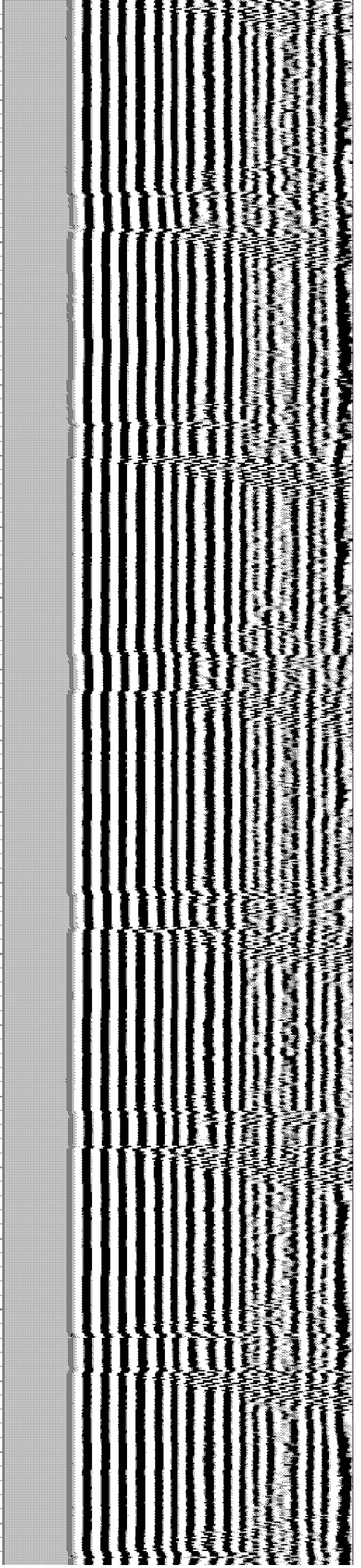
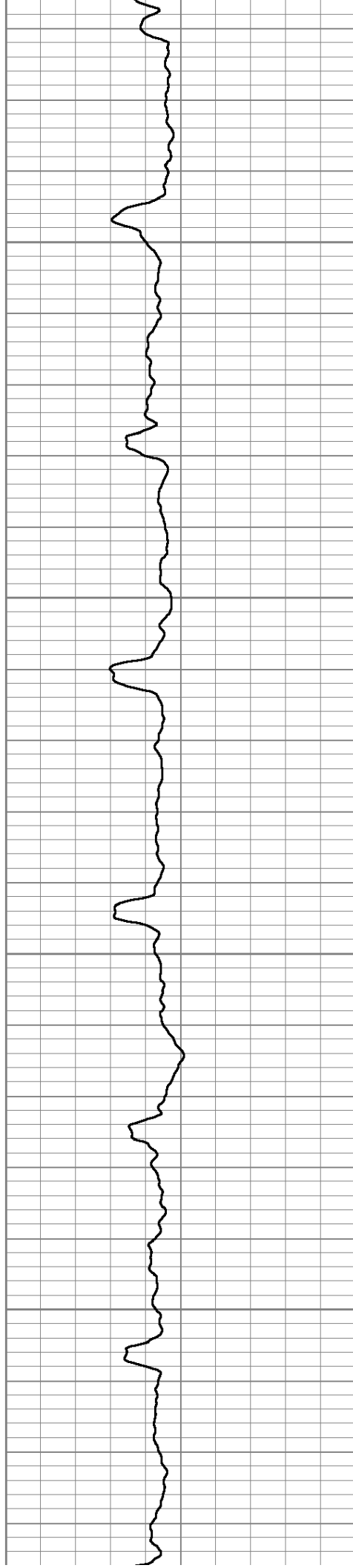


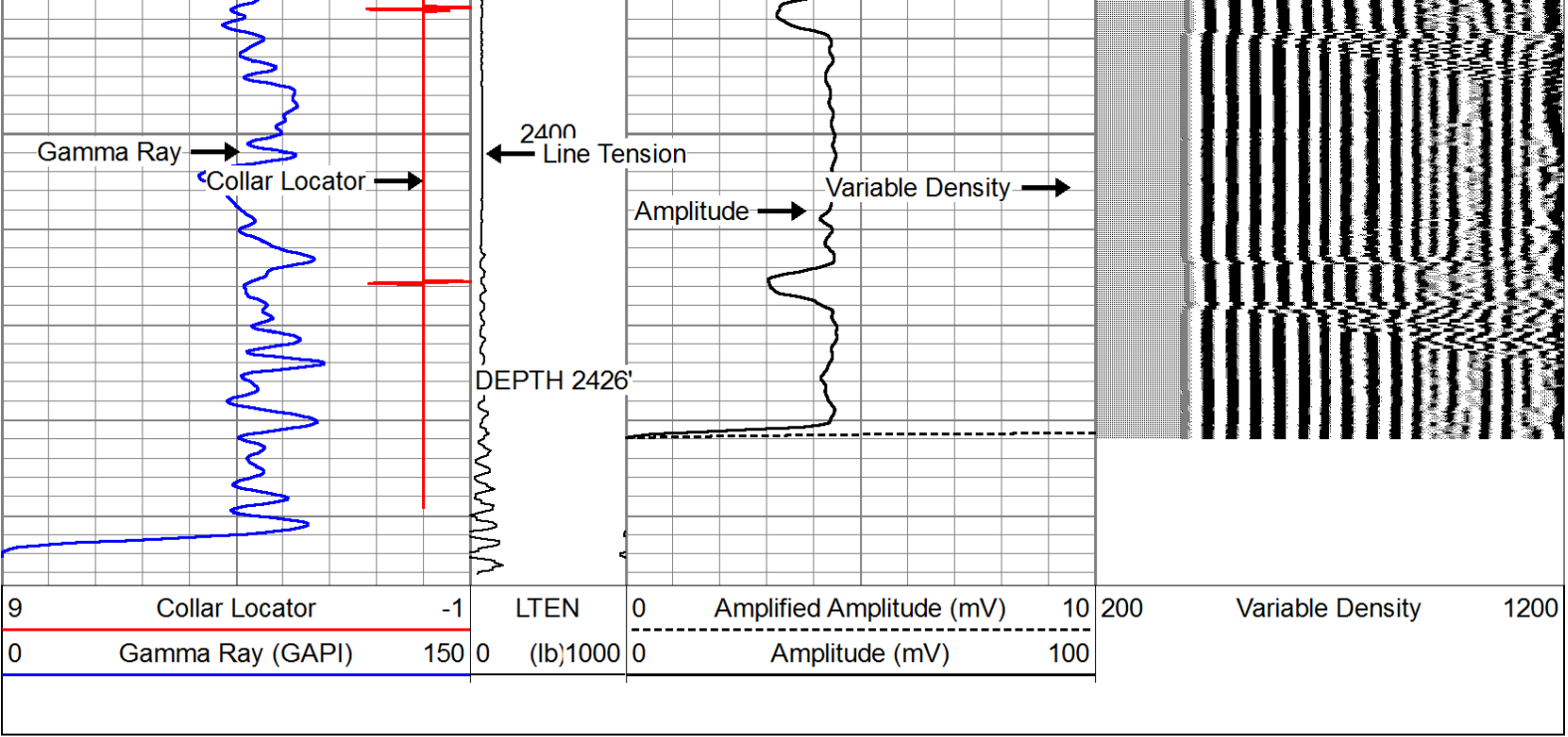
2200

2250

2300

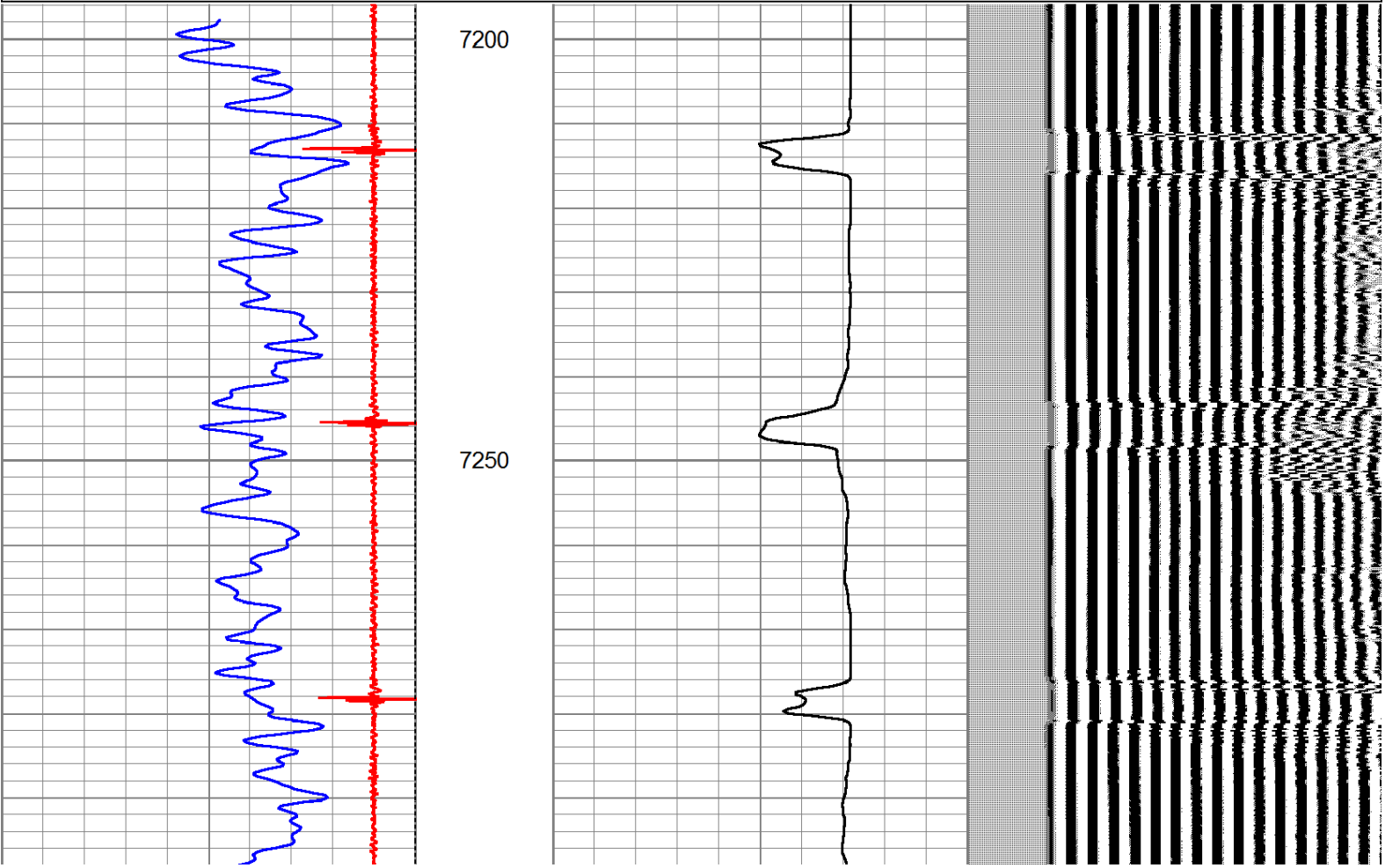
2350

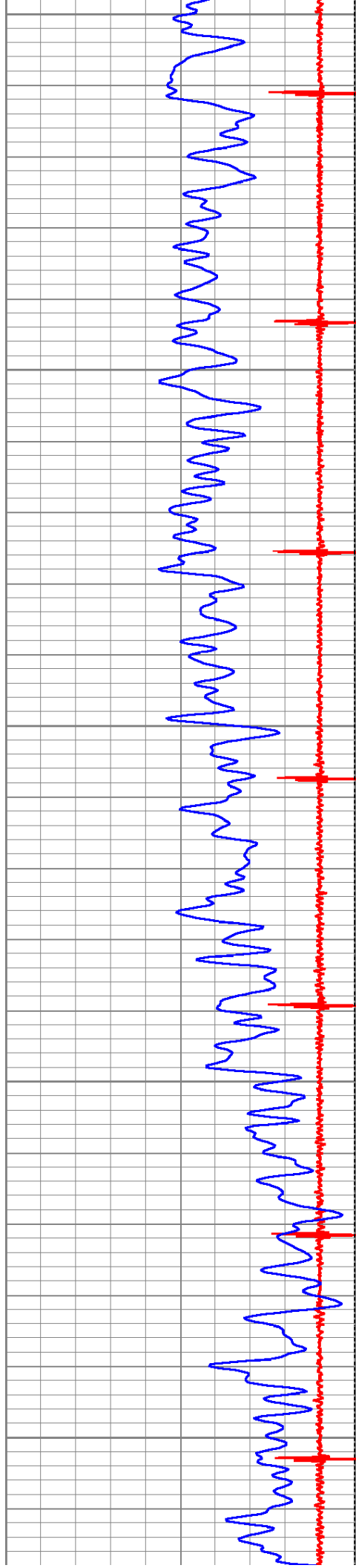




Database File: state of colorado u #2.db
Dataset Pathname: pass2
Presentation Format: cbl_dr
Dataset Creation: Thu Jun 13 18:54:39 2013 by Log SCH 120126
Charted by: Depth in Feet scaled 1:240

9	Collar Locator	-1	LTEN	0	Amplified Amplitude (mV)	10	200	Variable Density	1200
0	Gamma Ray (GAPI)	200	0 (lb)2000	0	Amplitude (mV)	100			





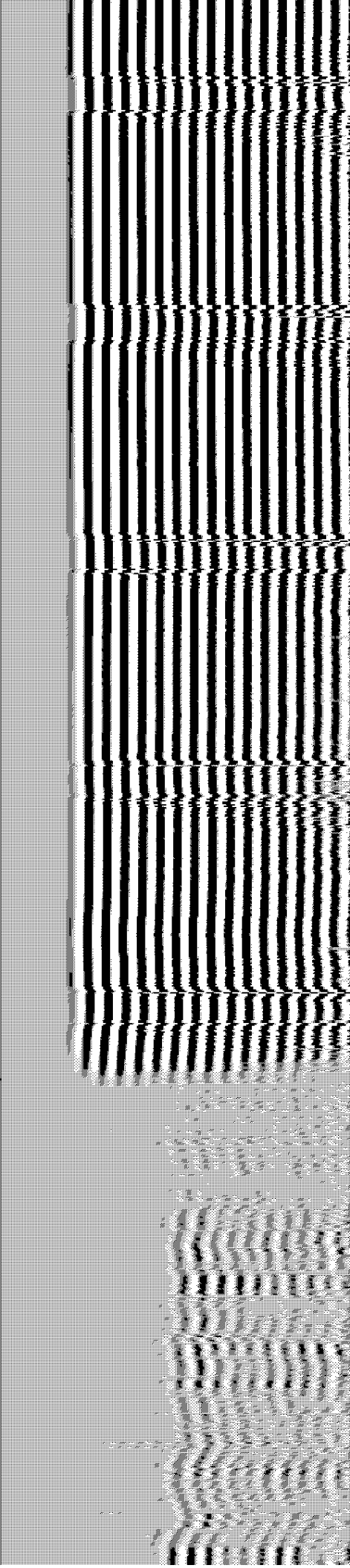
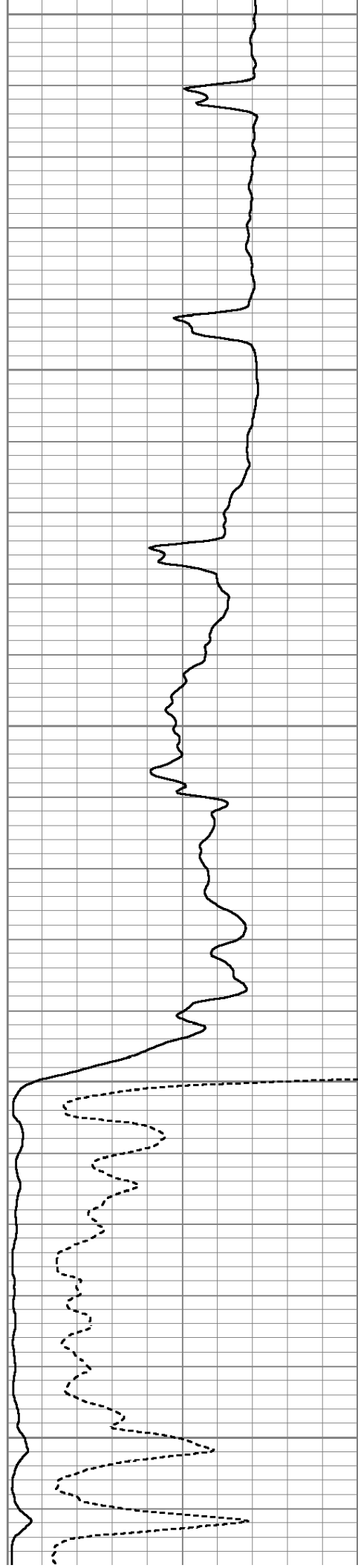
7300

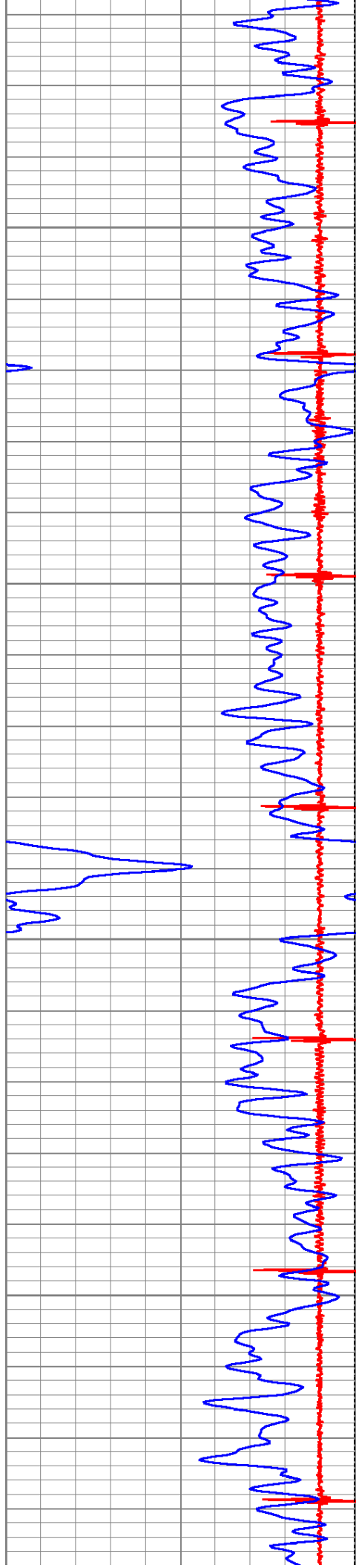
7350

7400

7450

7500



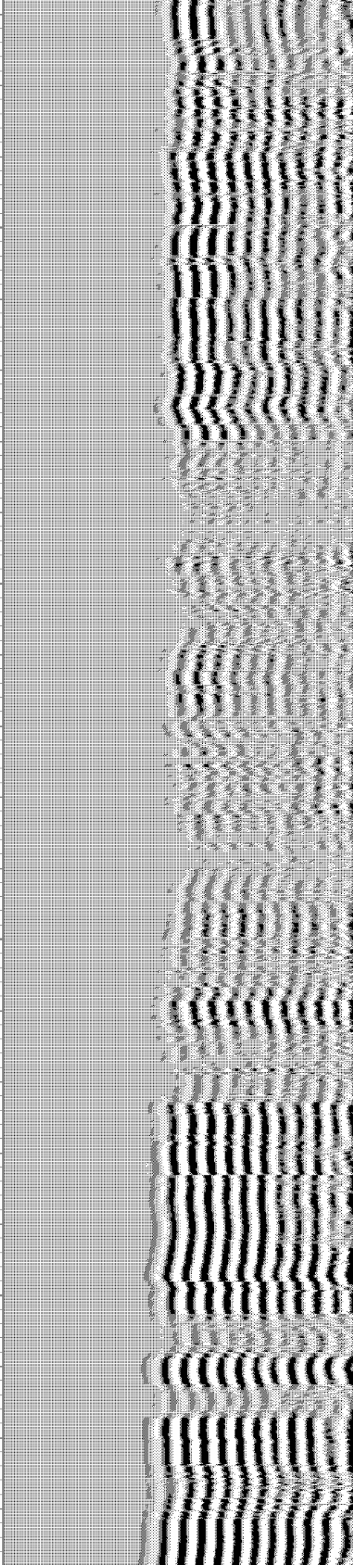
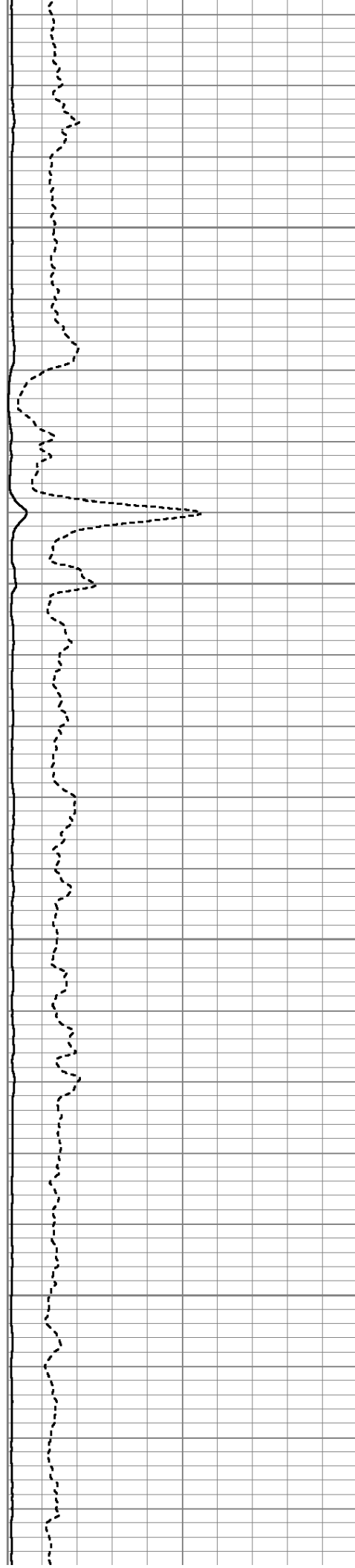


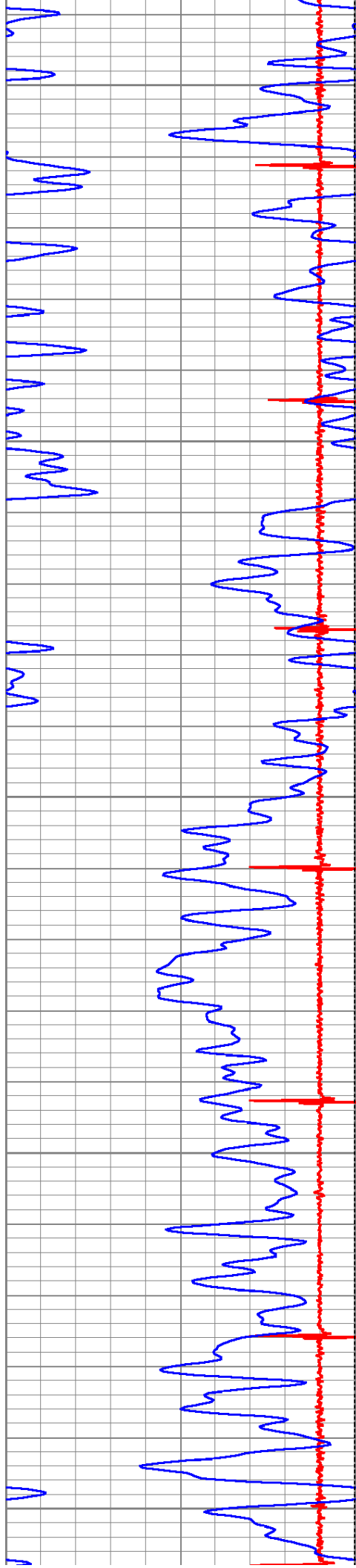
7550

7600

7650

7700





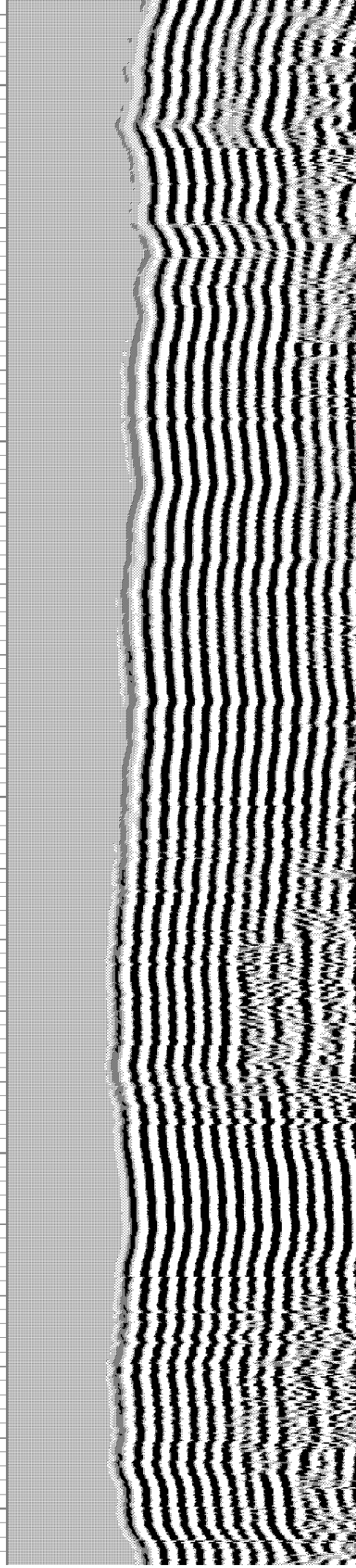
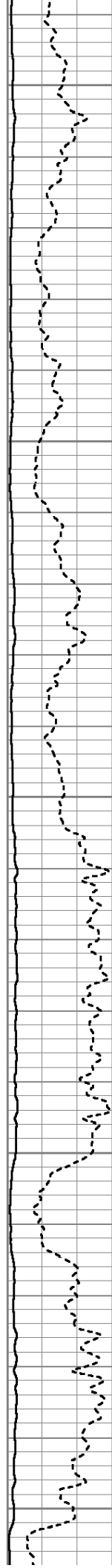
7750

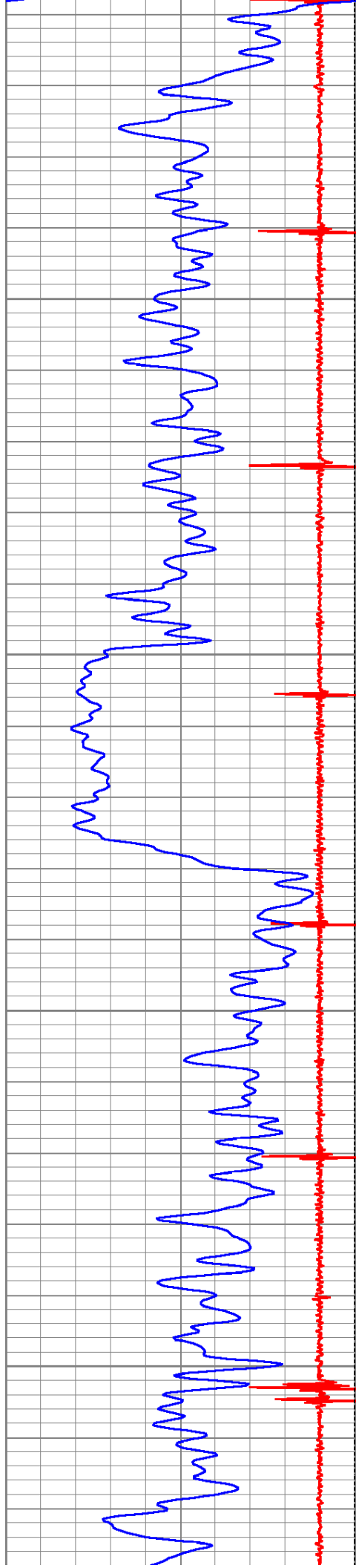
7800

7850

7900

7950



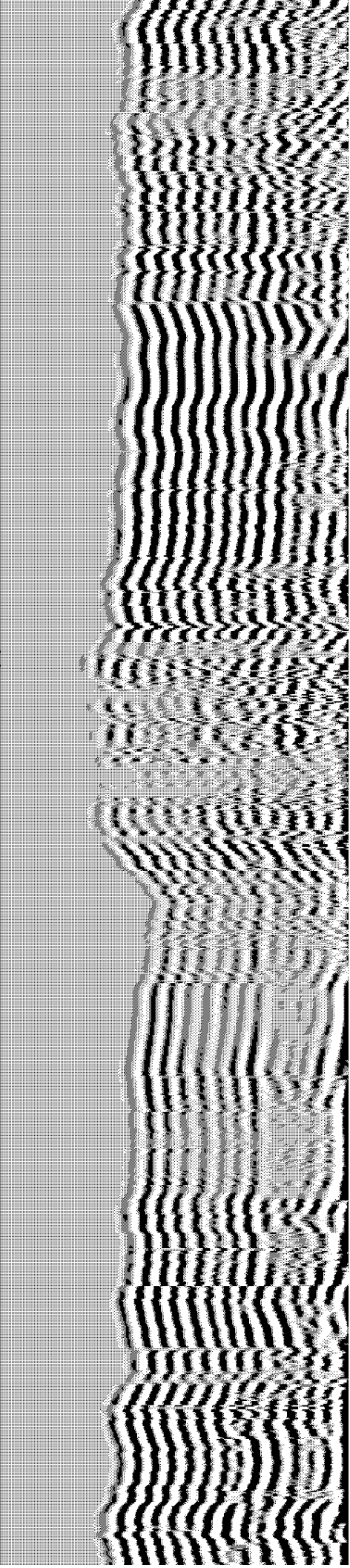
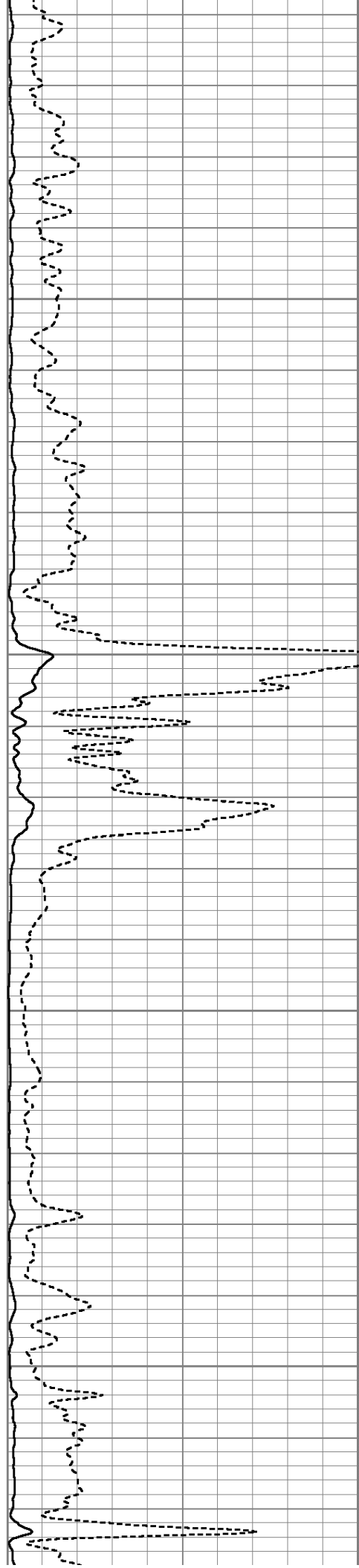


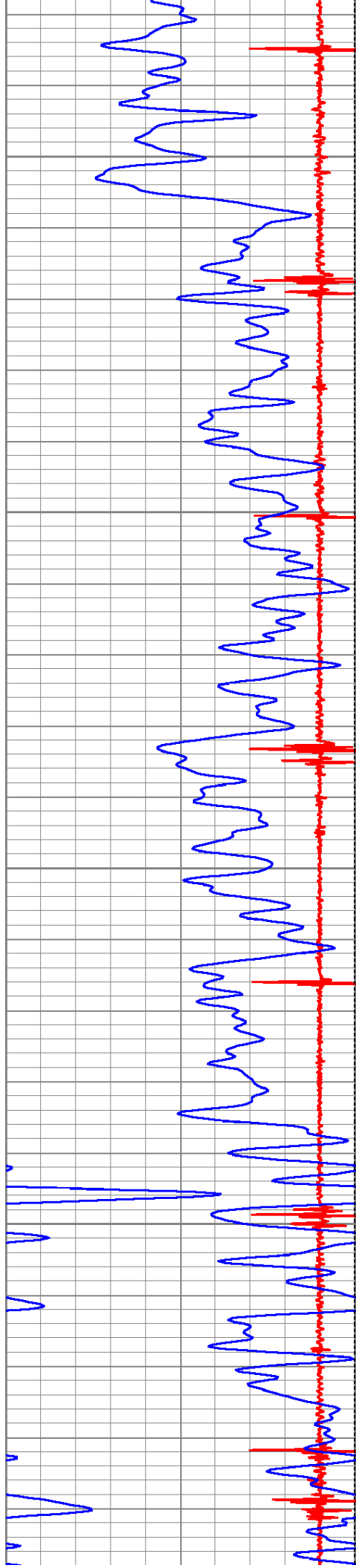
8000

8050

8100

8150





8200

8250

8300

8350

