

WPX ENERGY ROCKY MOUNTAIN LLC-EBUS

PA 344-3

**Aztec 1000**

## **Post Job Summary**

# **Cement Surface Casing**

Date Prepared: 06/25/2014  
Job Date: 06/12/2014

Submitted by: Evan Russell – Grand Junction Cement Engineer

The Road to Excellence Starts with Safety

Sold To #: 300721	Ship To #: 3191541	Quote #:	Sales Order #: 0901376809
Customer: WPX ENERGY ROCKY MOUNTAIN LLC-EBUS		Customer Rep: BRANDON HAIRE	
Well Name: WPX ENERGY	Well #: PA 344-3	API/UWI #: 05-045-22140-00	
Field: PARACHUTE	City (SAP): PARACHUTE	County/Parish: GARFIELD	State: COLORADO
Legal Description: NE SW-2-7S-95W-2043FSL-1540FWL			
Contractor:		Rig/Platform Name/Num: Aztec 1000	
Job BOM: 7521			
Well Type: DIRECTIONAL GAS			
Sales Person: HALAMERICA\HB50180		Srv Supervisor: Jesse Slaughter	
Job			

Formation Name			
Formation Depth (MD)	Top		Bottom
Form Type	BHST		
Job depth MD	1442ft	Job Depth TVD	5ft
Water Depth	Wk Ht Above Floor		
Perforation Depth (MD)	From		To

### Well Data

Description	New / Used	Size in	ID in	Weight lbm/ft	Thread	Grade	Top MD ft	Bottom MD ft	Top TVD ft	Bottom TVD ft
Casing		9.625	9.001	32.3	8 RD	H-40	0	1442	0	0
Open Hole Section			13.5				0	1450		0

### Tools and Accessories

Type	Size in	Qty	Make	Depth ft	Type	Size in	Qty	Make
Guide Shoe	9.625			1442	Top Plug	9.625	1	HES
Float Shoe	9.625				Bottom Plug	9.625		HES
Float Collar	9.625				SSR plug set	9.625		HES
Insert Float	9.625				Plug Container	9.625	1	HES
Stage Tool	9.625				Centralizers	9.625		HES

### Miscellaneous Materials

Gelling Agt	Conc	Surfactant	Conc	Acid Type	Qty	Conc
Treatment Fld	Conc	Inhibitor	Conc	Sand Type	Size	Qty

### Fluid Data

Stage/Plug #: 1

Fluid #	Stage Type	Fluid Name	Qty	Qty UoM	Mixing Density lbm/gal	Yield ft <sup>3</sup> /sack	Mix Fluid Gal	Rate bbl/min	Total Mix Fluid Gal
1	Fresh Water	Fresh Water	40	bbl	8.34			9	

Fluid #	Stage Type	Fluid Name	Qty	Qty UoM	Mixing Density lbm/gal	Yield ft <sup>3</sup> /sack	Mix Fluid Gal	Rate bbl/min	Total Mix Fluid Gal
2	Lead Cement	VARICEM (TM) CEMENT	200	sack	12.3	2.38		8	13.77

Fluid #	Stage Type	Fluid Name	Qty	Qty UoM	Mixing Density lbm/gal	Yield ft3/sack	Mix Fluid Gal	Rate bbl/min	Total Mix Fluid Gal
3	Tail Cement	VARICEM (TM) CEMENT	170	sack	12.8	2.11		8	11.77
11.77 Gal		FRESH WATER							
Fluid #	Stage Type	Fluid Name	Qty	Qty UoM	Mixing Density lbm/gal	Yield ft3/sack	Mix Fluid Gal	Rate bbl/min	Total Mix Fluid Gal
4	Displacement	Displacement	110	bbl	8.34			10	
Cement Left In Pipe		Amount	44.09 ft		Reason		Shoe Joint		
Comment									

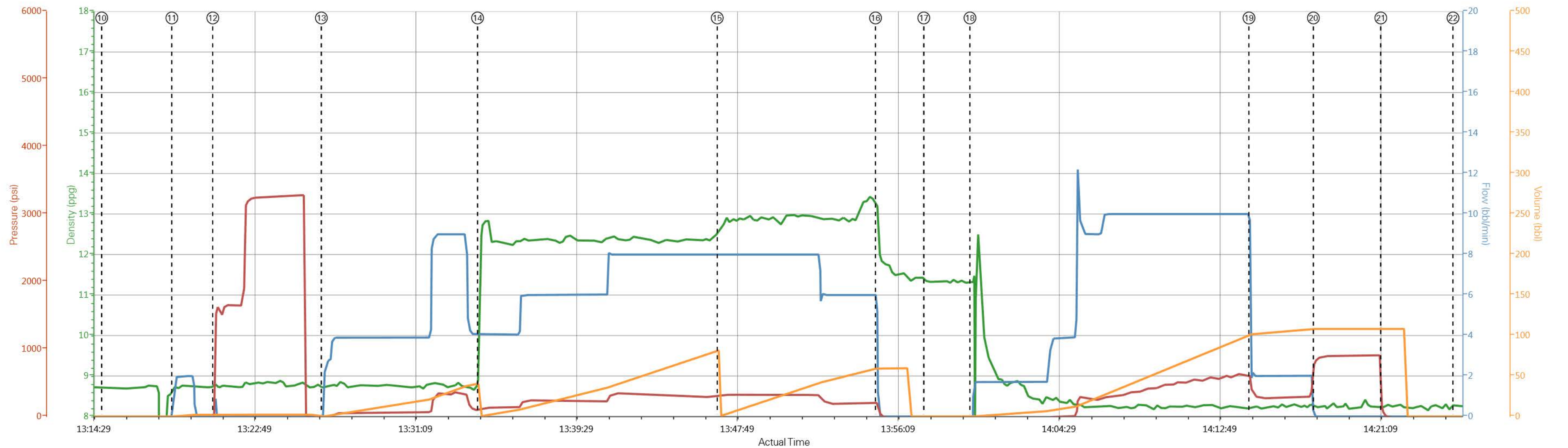


## 3.1 Job Event Log

Type	Seq. No.	Activity	Graph Label	Date	Time	Source	DH Density (ppg)	Comb Pump Rate (bbl/min)	PS Pump Press (psi)	Pump Stg Tot (bbl)	Comment
Event	1	Call Out	Call Out	6/12/2014	07:00:00	USER					
Event	2	Pre-Convoy Safety Meeting	Pre-Convoy Safety Meeting	6/12/2014	09:50:00	USER					WITH ALL HES PERSONNEL
Event	3	Crew Leave Yard	Crew Leave Yard	6/12/2014	10:00:00	USER					
Event	4	Arrive At Loc	Arrive At Loc	6/12/2014	11:30:00	USER					RIG WAS RUNNING CASING UPON HES ARRIVAL
Event	5	Assessment Of Location Safety Meeting	Assessment Of Location Safety Meeting	6/12/2014	11:35:00	USER					WITH ALL HES PERSONNEL
Event	6	Other	Spot Equipment	6/12/2014	11:40:00	USER					
Event	7	Pre-Rig Up Safety Meeting	Pre-Rig Up Safety Meeting	6/12/2014	11:50:00	USER					WITH ALL HES PERSONNEL
Event	8	Rig-Up Equipment	Rig-Up Equipment	6/12/2014	12:00:00	USER					
Event	9	Pre-Job Safety Meeting	Pre-Job Safety Meeting	6/12/2014	13:00:00	USER					WITH ALL PERSONNEL
Event	10	Start Job	Start Job	6/12/2014	13:15:00	COM7					TD 1450 FT, TP 1442 FT, SHOE 44.09 FT, CSG 9 /58 IN 32.3 LB/FT, HOLE 13. 1/2 IN, MUD WT 10.7 PPG
Event	11	Prime Pumps	Prime Pumps	6/12/2014	13:18:37	USER	8.33	2.0	36.0	2.0	FILL LINES WITH FRESH WATER
Event	12	Test Lines	Test Lines	6/12/2014	13:20:45	COM7					TESTED LINES TO 3248 PSI PRESSURE HOLDING
Event	13	Pump Spacer 1	Pump H2O Spacer	6/12/2014	13:26:22	COM7	8.33	9.0	340.0	40.0	FRESH WATER
Event	14	Pump Lead Cement	Pump Lead Cement	6/12/2014	13:34:28	COM7	12.3	8.0	351.0	84.8	200 SKS AT 12.3 PPG, 2.38 FT3/SK, 13.77 GAL/SK
Event	15	Pump Tail Cement	Pump Tail Cement	6/12/2014	13:46:53	COM7	12.8	8.00	251.0	63.9	170 SKS AT 12.8 PPG, 2.11 FT3/SK, 11.77 GAL/SK
Event	16	Shutdown	Shutdown	6/12/2014	13:55:05	USER					
Event	17	Drop Top Plug	Drop Top Plug	6/12/2014	13:57:35	COM7					PLUG LAUNCHED
Event	18	Pump Displacement	Pump Displacement	6/12/2014	13:59:58	COM7	8.33	10.0	608.0	110.0	FRESH WATER

Event	19	Slow Rate	Slow Rate	6/12/2014	14:14:25	USER	8.33	2.0	290.0	100.0	SLOWED RATE 10 BBL PRIOR TO CALCULATED DISPLACEMENT
Event	20	Bump Plug	Bump Plug	6/12/2014	14:17:46	COM7	8.27	2.0	290.0		
Event	21	Check Floats	Check Floats	6/12/2014	14:21:15	USER	8.26	0.00	800.0	110.0	FLOATS HOLDING. HES RETURNED 1/2 BBL H2O TO PUMP
Event	22	End Job	End Job	6/12/2014	14:25:00	USER					PIPE WAS STATIC DURING JOB, GOOD CIRCULATION THROUGHOUT JOB. HES RETURNED 30 BBL CEMENT TO SURFACE. USED 40 LB SUGAR FOR JOB.
Event	23	Pre-Rig Down Safety Meeting	Pre-Rig Down Safety Meeting	6/12/2014	14:30:00	USER					WITH ALL HES PERSONNEL
Event	24	Rig-Down Equipment	Rig-Down Equipment	6/12/2014	14:40:00	USER					
Event	25	Pre-Convoy Safety Meeting	Pre-Convoy Safety Meeting	6/12/2014	15:55:00	USER					WITH ALL HES PERSONNEL
Event	26	Crew Leave Location	Crew Leave Location	6/12/2014	16:00:00	USER					
Event	27	Comment	Comment	6/12/2014	16:01:00	USER					THANK YOU FOR USING HALLIBURTON CEMENT DEPARTMENT, JESSE SLAUGHTER AND CREW.

WPX - PA 344-3 - SURFACE



DH Density (ppg)    Comb Pump Rate (bbl/min)    PS Pump Press (psi)    Pump Stg Tot (bbl)

① Call Out <span>n/a;n/a;n/a;n/a</span>	⑤ Assessment Of Location Safety Meeting <span>n/a;n/a;n/a;n/a</span>	⑨ Pre-Job Safety Meeting <span>8.68;0;-43;31.8</span>	⑬ Pump H2O Spacer <span>8.72;1.2;-41;0</span>	⑰ Drop Top Plug <span>11.35;0;-34;0</span>	21 Check Floats <span>8.26;0;81;108.1</span>	25 Pre-Convoy Safety Meeting <span>n/a;n/a;n/a;n/a</span>
② Pre-Convoy Safety Meeting <span>n/a;n/a;n/a;n/a</span>	⑥ Spot Equipment <span>n/a;n/a;n/a;n/a</span>	⑩ Start Job <span>8.72;0;-45;0</span>	⑭ Pump Lead Cement <span>10.45;4.1;94;0.1</span>	⑱ Pump Displacement <span>11.32;0;-34;0</span>	22 End Job <span>8.26;0;-36;0</span>	26 Crew Leave Location <span>n/a;n/a;n/a;n/a</span>
③ Crew Leave Yard <span>n/a;n/a;n/a;n/a</span>	⑦ Pre-Rig Up Safety Meeting <span>n/a;n/a;n/a;n/a</span>	⑪ Prime Pumps <span>8.75;0.9;-31;0</span>	⑮ Pump Tail Cement <span>12.6;8;313;0.1</span>	⑲ Slow Rate <span>8.21;3.8;436;101.5</span>	23 Pre-Rig Down Safety Meeting <span>8.22;0;-38;0</span>	27 Comment <span>n/a;n/a;n/a;n/a</span>
④ Arrive At Loc <span>n/a;n/a;n/a;n/a</span>	⑧ Rig-Up Equipment <span>n/a;n/a;n/a;n/a</span>	⑫ Test Lines <span>8.79;0.5;-32;2.1</span>	⑯ Shutdown <span>13.2;3.5;173;59.6</span>	20 Bump Plug <span>8.23;0;822;108.1</span>	24 Rig-Down Equipment <span>8.25;0;-39;30.5</span>	

▼ HALLIBURTON | iCem® Service

Created: 2014-06-12 12:32:02, Version: 3.0.121 Edit

Customer: WPX ENERGY ROCKY MOUNTAIN LLC-EBUS  
Representative: BRANDON HAIRE

Job Date: 6/12/2014 12:34:03 PM  
Sales Order #: 0901376809

Well: PA 344-3  
Elite #6: JESSE SLAUGHTER / DAVID CAMPBELL

# HALLIBURTON

## Water Analysis Report

Company: WILLIAMS PRODUCTION

Submitted by: JESSE SLAUGHTER

Attention: LAB

Lease PA

Well # 344-3

Date: 6/12/2014

Date Rec.:

S.O.# 901376809

Job Type: SURFACE

Specific Gravity	<i>MAX</i>	<b>1</b>
pH	<i>8</i>	<b>6</b>
Potassium (K)	<i>5000</i>	<b>250</b> Mg / L
Calcium (Ca)	<i>500</i>	<b>120</b> Mg / L
Iron (FE2)	<i>300</i>	<b>0</b> Mg / L
Chlorides (Cl)	<i>3000</i>	<b>0</b> Mg / L
Sulfates (SO <sub>4</sub> )	<i>1500</i>	<b>UNDER 200</b> Mg / L
Chlorine (Cl <sub>2</sub> )		<b>0</b> Mg / L
Temp	<i>40-80</i>	<b>70</b> Deg
Total Dissolved Solids		<b>200</b> Mg / L

Respectfully: JESSE SLAUGHTER

Title: CEMENTING SUPERVISOR

Location: Grand Junction, CO

**NOTICE:**

This report is limited to the described sample tested. Any person using or relying on this report agrees that Halliburton shall not be liable for any loss or damage whether due to act or omission resulting from such report or its