

T7N, R66W, 6th P.M.

GREAT WESTERN OIL & GAS COMPANY

Well location, LIND EE 20-242HN, located as shown in the SW 1/4 SW 1/4 of Section 20, T7N, R66W, 6th P.M., Weld County, Colorado.

BASIS OF ELEVATION

USGS COOPERATIVE BASE NETWORK CONTROL STATION, DESIGNATION 'VERMILYEA'. NGS DATA SHEET LISTS THE NAVD 88 ELEVATION AS BEING 5026 FEET

BASIS OF BEARINGS

BASIS OF BEARINGS IS A G.P.S. OBSERVATION.

LINE TABLE

LINE	DIRECTION	LENGTH
L1	N02°05'31"E	1696.82'
L2	N01°17'48"W	547.36'
L3	N01°16'27"W	496.17'



CERTIFICATION

THIS IS TO CERTIFY THAT THE ABOVE PLAT WAS PREPARED FROM FIELD NOTES OF ACTUAL SURVEYS MADE BY ME OR UNDER MY SUPERVISION AND THAT THE SAME ARE TRUE AND CORRECT TO THE BEST OF MY KNOWLEDGE AND BELIEF.

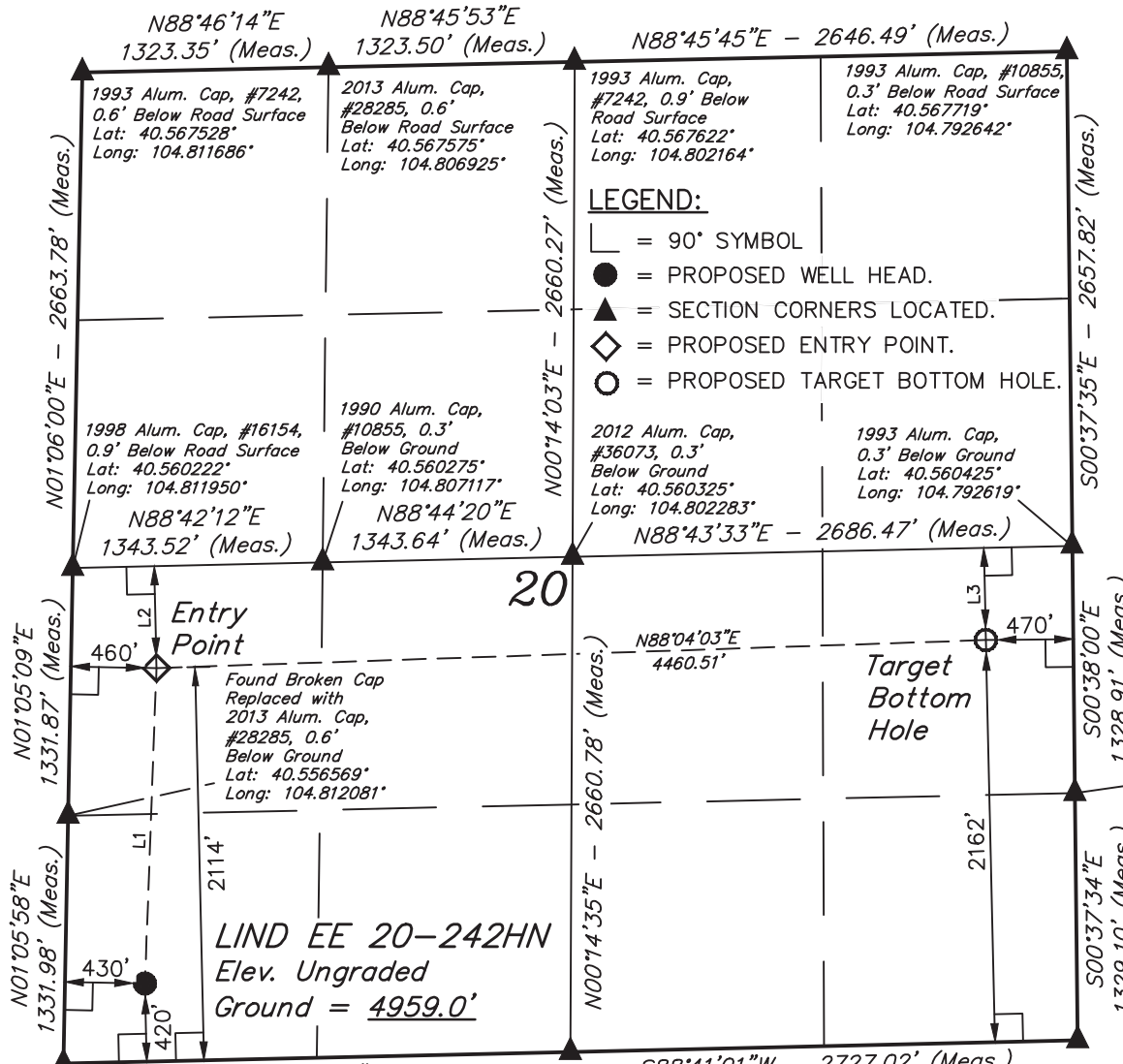
REGISTERED LAND SURVEYOR
REGISTRATION NO. 28285
STATE OF COLORADO

UINTAH ENGINEERING & LAND SURVEYING

85 SOUTH 200 EAST - VERNAL, UTAH 84078

(435) 789-1017

SCALE 1" = 1000'	DATE SURVEYED: 06-05-14	DATE DRAWN: 06-12-14
PARTY DARREN SHANKS, D.M.S. J.W.	REFERENCES G.L.O. PLAT	
WEATHER WARM	FILE GREAT WESTERN OIL & GAS COMPANY	



2013 Alum. Cap, #36073, 0.3' Below Gravel Road Surface
Lat: 40.552914°
Long: 104.812214°

S88°41'06"W
2726.74' (Meas.)

2013 Alum. Cap, #36073, 0.3' Below Gravel Road Surface
Lat: 40.553022°
Long: 104.802406°

1995 Alum. Cap, #7242, 0.3' Below Ground in Monument Box
Lat: 40.553131°
Long: 104.792597°

PDOP = 1.5

NAD 83 (TARGET BOTTOM HOLE)	NAD 83 (ENTRY POINT)	NAD 83 (SURFACE LOCATION)
LATITUDE = 40°33'32.57" (40.559047)	LATITUDE = 40°33'31.45" (40.558736)	LATITUDE = 40°33'14.71" (40.554086)
LONGITUDE = 104°47'39.50" (104.794306)	LONGITUDE = 104°48'37.25" (104.810347)	LONGITUDE = 104°48'38.24" (104.810622)
NAD 27 (TARGET BOTTOM HOLE)	NAD 27 (ENTRY POINT)	NAD 27 (SURFACE LOCATION)
LATITUDE = 40°33'32.63" (40.559064)	LATITUDE = 40°33'31.52" (40.558756)	LATITUDE = 40°33'14.78" (40.554106)
LONGITUDE = 104°47'37.61" (104.793781)	LONGITUDE = 104°48'35.36" (104.809822)	LONGITUDE = 104°48'36.35" (104.810097)