



FILE NO: US625272  
 COMPANY: WPX ENERGY INC  
 WELL: PUCKETT GM 701-28-HN1  
 FIELD: RULISON  
 COUNTY: GARFIELD STATE CO

Ver. 3.87  
 S28 T6S R96W  
 PAD: GM 11-28  
 RIG: AZTEC 1000  
 LOCATION: SHL: 1314' FNL: 1035' FWL  
 BHL: 535' FNL: 629' FWL  
 SEC 28 TWP 6S RGE 96W  
 OTHER SERVICES: XMAC HDIL ZDL CN

PERMANENT DATUM: GL ELEVATION 5604 FT  
 LOG MEASURED FROM: KB 25 FT ABOVE P.D.  
 DRILL. MEAS. FROM: KB  
 ELEVATIONS: KB 5629 FT, DF, GL 5604 FT

DATE	TRIP	08-Dec-2013	13-Nov-2013
RUN	2	1	1
SERVICE ORDER	US625272	US625265	
DEPTH DRILLER	11252 FT	2960 FT	
DEPTH LOGGER	NOT TAGGED	2955 FT	
BOTTOM LOGGED INTERVAL	10432 FT	2939 FT	
TOP LOGGED INTERVAL	2900 FT	0 FT	
CASING DRILLER	13.375 IN @ 2957 FT	20 IN @ 110 FT	
CASING LOGGER	2949 FT	104 FT	
BIT SIZE	12.25 IN	17.5 IN	
TYPE OF FLUID IN HOLE	LSND	LSND	
DENSITY	12.7 LB/G	84 CP	9.9 LB/G 60 CP
PH	9.6	4.4 C3	8.6 24 C3
SOURCE OF SAMPLE	FLOWLINE	FLOWLINE	
RM AT MEAS. TEMP.	0.84 OHMM @ 76 DEGF	1.07 OHMM @ 78 DEGF	
RMF AT MEAS. TEMP.	0.63 OHMM @ 76 DEGF	0.8 OHMM @ 78 DEGF	
RMC AT MEAS. TEMP.	1.05 OHMM @ 76 DEGF	1.33 OHMM @ 78 DEGF	
SOURCE OF RMC	CALCULATED	CALCULATED	
RM AT BHT	0.688 OHMM @ 246.9 DEGF	1.15 OHMM @ 149 DEGF	
TIME SINCE CIRCULATION	8 HRS	9 HRS	
MAX. RECORDED TEMP.	248.6 DEGF	152 DEGF	
EQUIP. NO.	6670	6670	
RECORDED BY	PATTON	PATTON	
WITNESSED BY	MOORE/BRUNK	ANDREW BRUNK	

IN MAKING INTERPRETATIONS OF LOGS OUR EMPLOYEES WILL GIVE THE CUSTOMER THE BENEFIT OF THEIR BEST JUDGEMENT. BUT SINCE ALL INTERPRETATIONS ARE OPINIONS BASED ON INFERENCES FROM ELECTRICAL OR OTHER MEASUREMENTS, WE CANNOT, AND WE DO NOT GUARANTEE THE ACCURACY OR CORRECTNESS OF ANY INTERPRETATION. WE SHALL NOT BE LIABLE OR RESPONSIBLE FOR ANY LOSS, COST, DAMAGES, OR EXPENSES WHATSOEVER INCURRED OR SUSTAINED BY THE CUSTOMER RESULTING FROM ANY INTERPRETATION MADE BY ANY OF OUR EMPLOYEES.

BOREHOLE RECORD		
BIT SIZE	FROM	TO
12.25 IN	2957 FT	11252 FT
17.5 IN	0 FT	2955 FT

CASING RECORD				
SIZE	WEIGHT	GRADE	FROM	TO
13.375 IN	68 LB/F		0 FT	2957 FT
20 IN	54 LB/F		0 FT	104 FT

**REMARKS**

RUN 2 TRIP 1: XMAC HDIL ZDL CN GR RAN IN COMBINATION

MADE 10509' INTO THE CURVE, PULLED WEIGHT COMING OUT  
 PULLED 65% AT 10230' SHUT CALIPER TO PULL THROUGH TIGHT SPOT  
 PULLED 65% AT 8300' SHUT CALIPER TO PULL THROUGH TIGHT SPOT

BVOL CVOL CALCULATED IN CUBIC FEET  
 BVOL CALCULATED USING PROPOSED 9.625" CASING  
 CALIPER VERIFIED INSIDE CASING

THANK YOU FOR CHOOSING BAKER HUGHES WIRELINE SERVICES  
 CREW: PATTON/COATE/HOLLAR  
 RIG: AZTEC 1000

**EQUIPMENT DATA**

RUN	TRIP	TOOL	SERIES NO.	SERIAL NO.	POSITION
1	1	DHPA	4430XB	12494777	FREE
1	1	SWVL	3944XD	10201370	FREE
1	1	TTRM	3981XA	10203010	FREE
1	1	WTS	3514XB	10240730	FREE
1	1	DSL	1329XA	10196895	FREE
1	1	KNJT	3939XA	10399278	FREE
1	1	CN	2446XA	10202048	DECENTRALIZED
1	1	ZDL	2234XA	153015	DECENTRALIZED
1	1	KNJT	3939XA	10185406	FREE
1	1	GENT	4341XA	10239054	CENTRALIZED
1	1	ORIT	4401XB	10304309	CENTRALIZED
1	1	XMAC	1677EA	179577	CENTRALIZED
1	1	XMF1	1678MC	10084081	CENTRALIZED
1	1	XMAC	1678PB	10086347	CENTRALIZED
1	1	XMAC	1678BA	10070639	CENTRALIZED
1	1	XMAC	1678FA	10083715	CENTRALIZED
1	1	GENT	4341XA	10202020	CENTRALIZED
1	1	HDIL	1515EA	10318637	STOOD OFF
1	1	HDIL	1515MA	10037719	STOOD OFF

**BOREHOLE PROFILE**

ECLIPS 6.2i ECLIPS General Release Rel 6.2i Wed Jun 12 12:21:40 CDT 2013

Patches: 3

Plotted: Sun Dec 8 18:43:53 2013

**PARAMETER AND FILTER SUMMARY REPORT**

FILE: /dat1a/625272/n777v02.prm  
 LOGGING MODE: DEPTH DIRECTION: UP  
 TOP DEPTH: 7202.169 ft BOTTOM DEPTH: 10539.247 ft

**SYMMETRIC FILTER**

MEASUREMENT TYPE	PARAMETER	VALUE	UNITS	INTERVAL (ft)
Y AXIS CALIPER	FILTER Q	medium (1)		TOP BOTTOM
TENSION	FILTER Q	medium (1)		" "
GR	FILTER Q	medium (1)		" "
CALIPER	FILTER Q	medium (1)		" "
	FILTER (.h)	medium (1)		" "
	FILTER (.i)	medium (1)		" "

**BOREHOLE & CEMENT**

MEASUREMENT TYPE	PARAMETER	VALUE	UNITS	INTERVAL (ft)
CASING - BOREHOLE & CEMENT VOLUME	CASING O.D.	9.625	in	TOP BOTTOM
BIT SIZE	BIT SIZE	12.250	in	" "

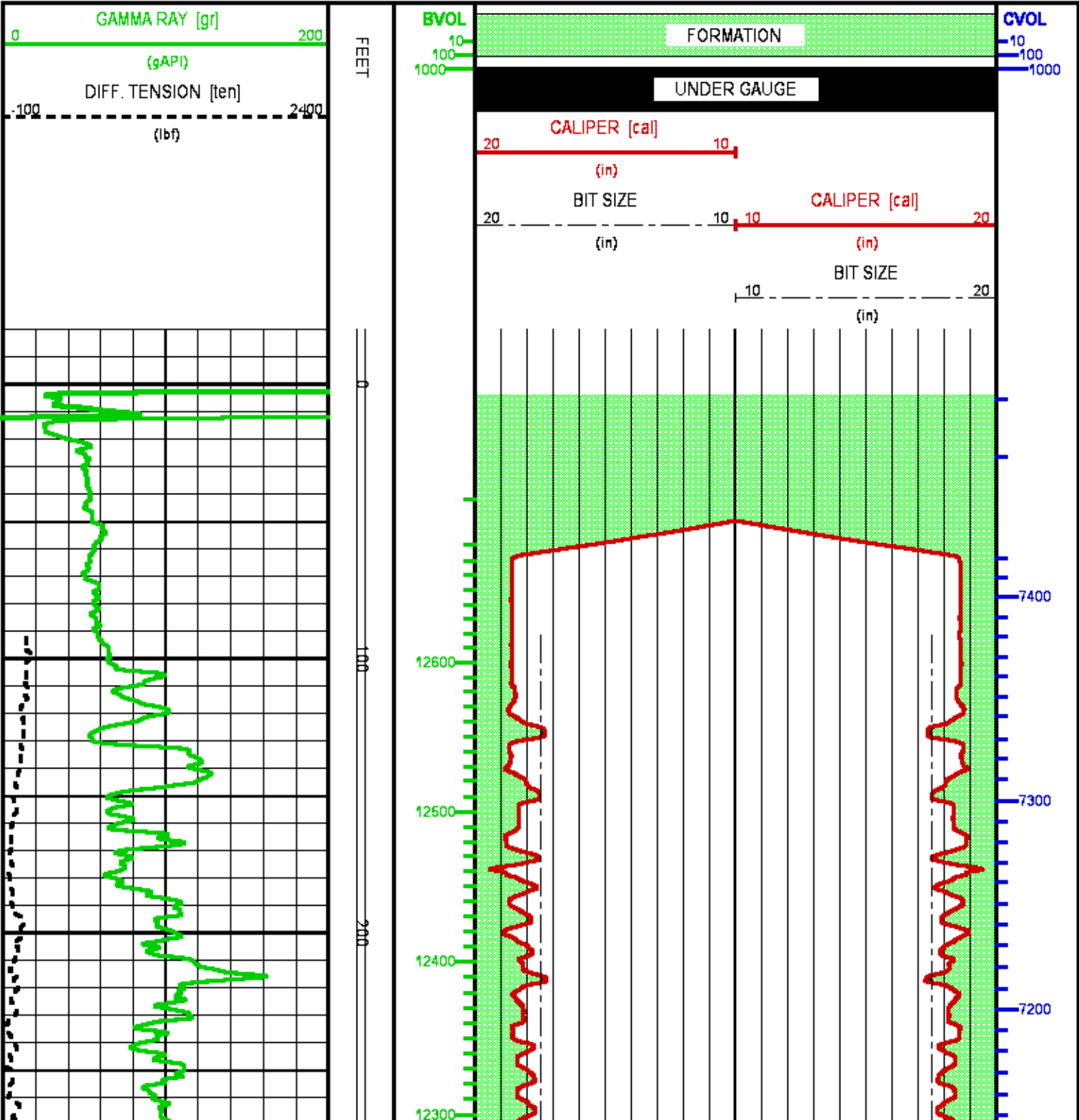
**CURVE DESCRIPTION REPORT**

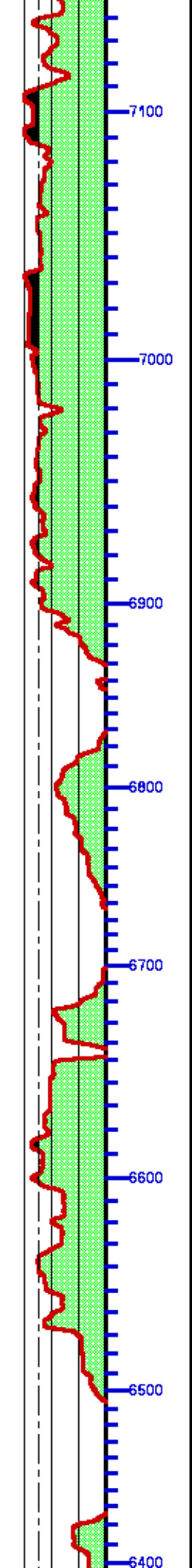
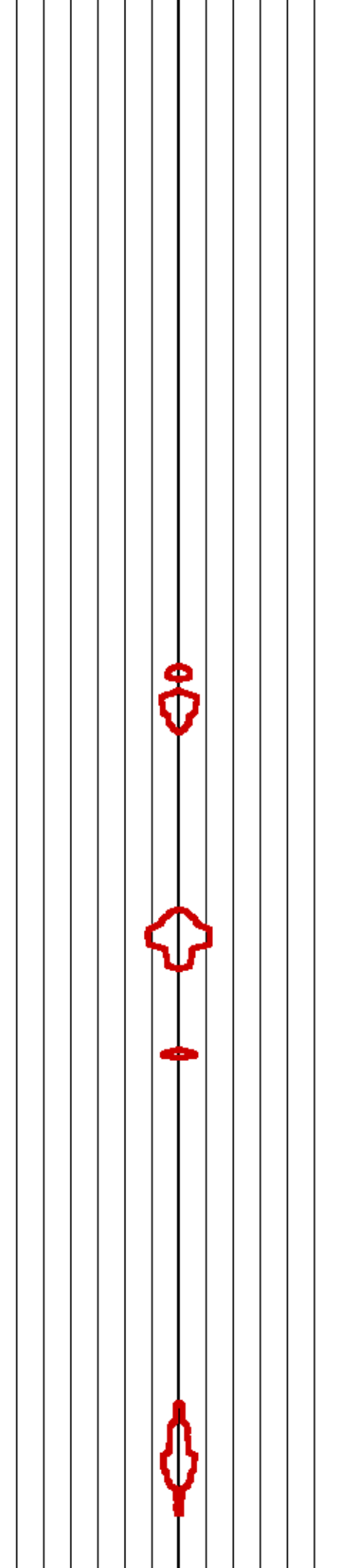
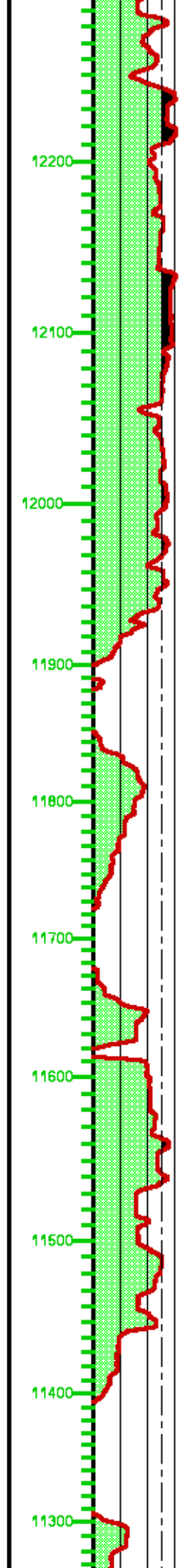
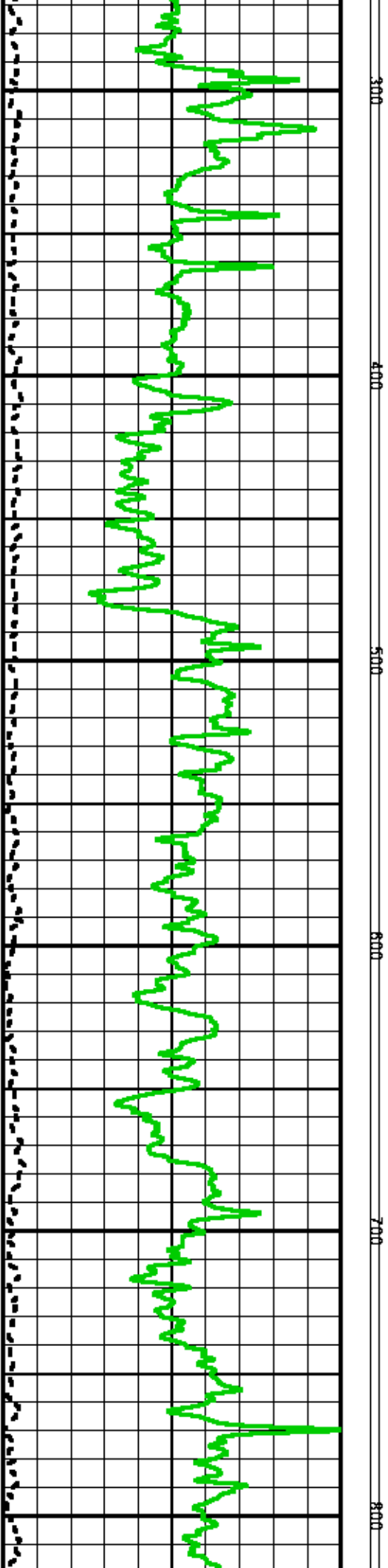
CURVE NAME	CREATION DATE	CURVE DESCRIPTION
F1:BIT	Dec 8 11:21:33 2013	BIT SIZE
F1:BVOL	Dec 8 11:21:33 2013	BOREHOLE VOLUME
F1:CAL	Dec 8 11:21:33 2013	CALIPER
F1:CVOL	Dec 8 11:21:33 2013	CEMENT VOLUME
F1:GR	Dec 8 11:21:33 2013	GAMMA RAY

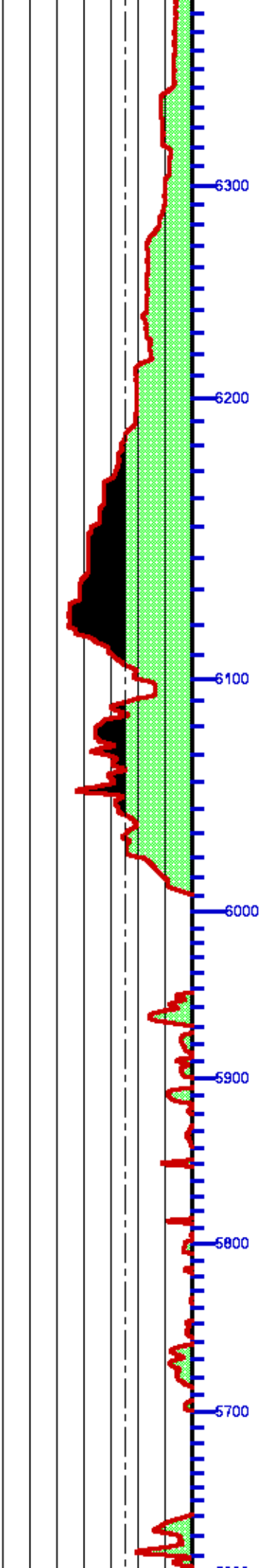
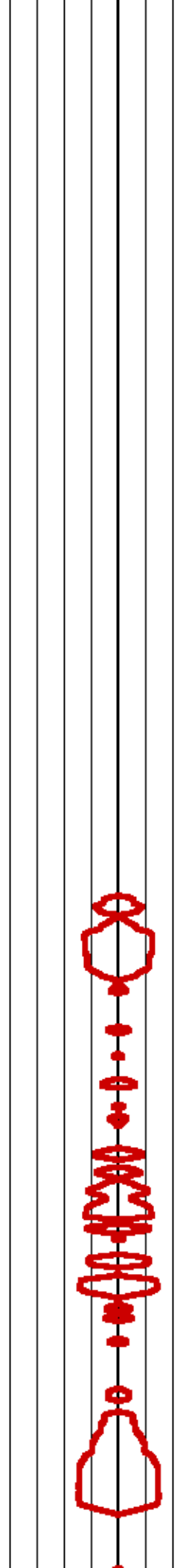
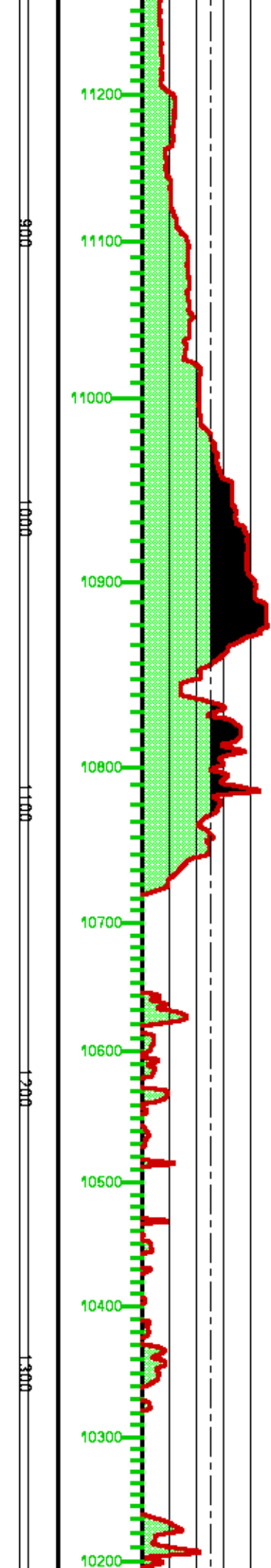
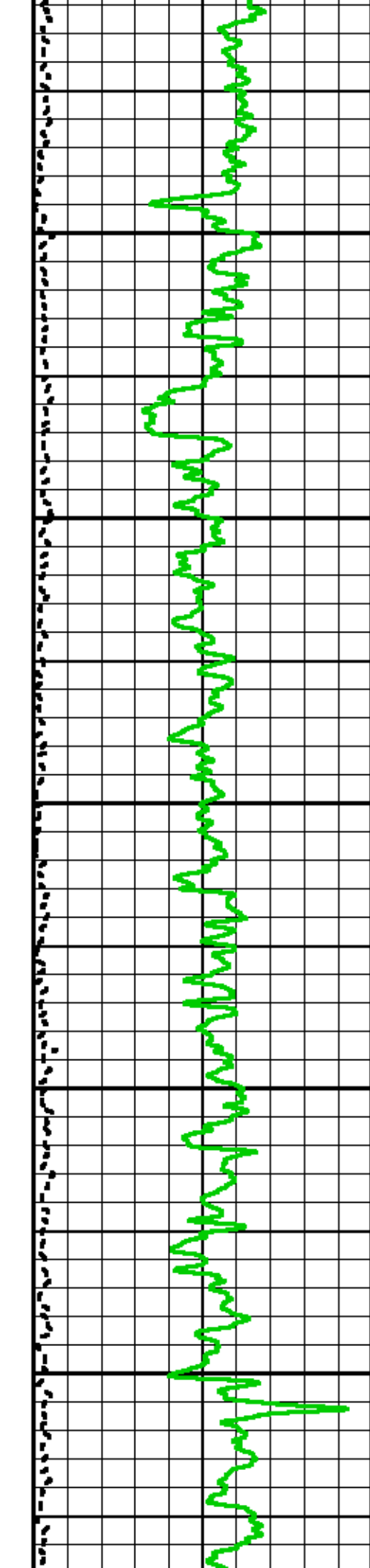
### CURVE MEASURE POINT OFFSET

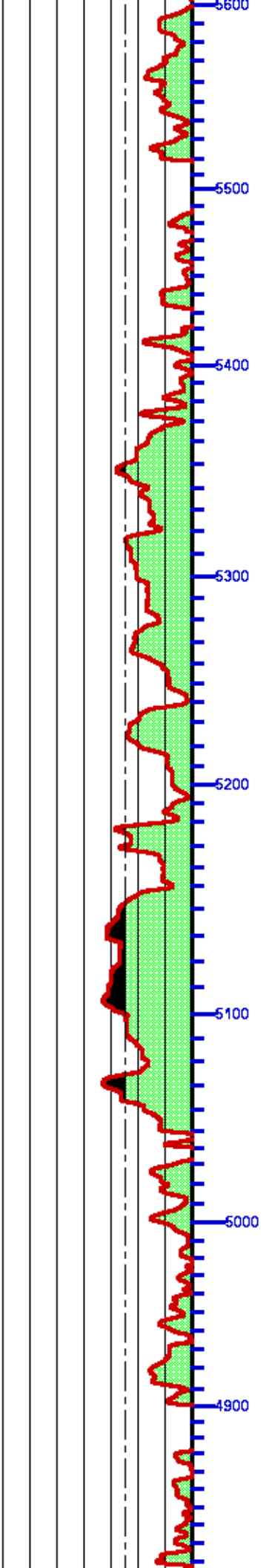
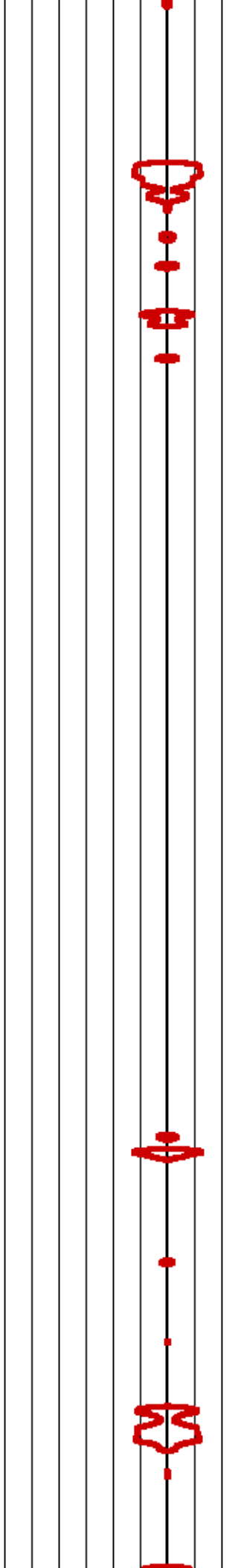
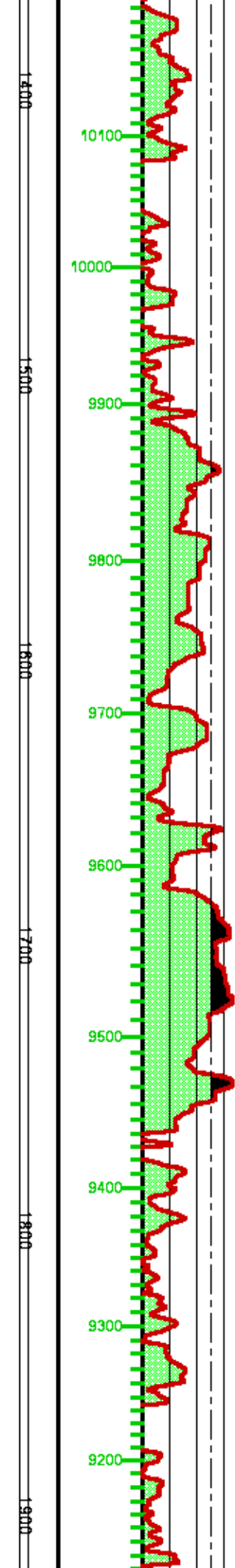
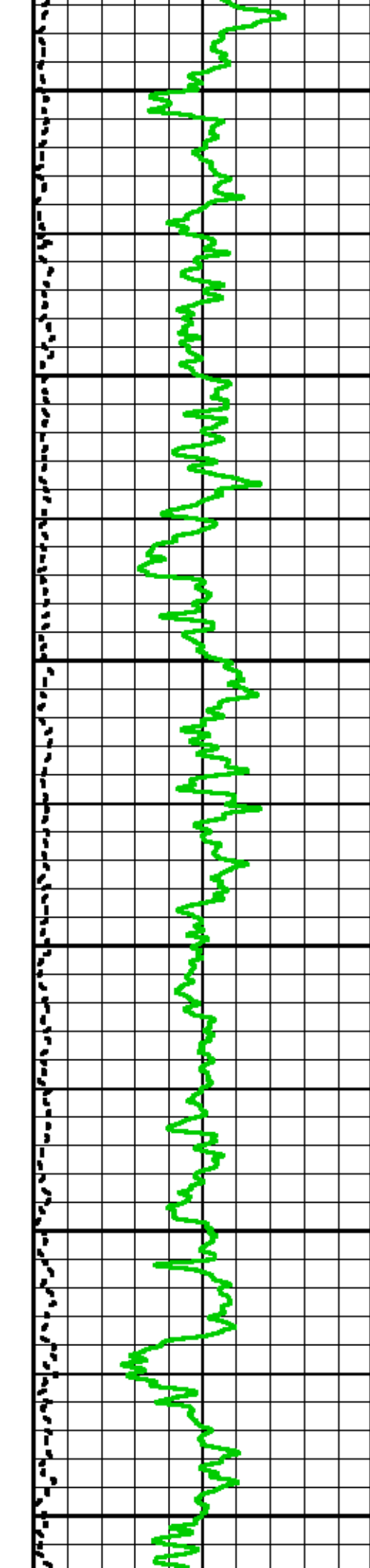
CURVE	OFFSET (ft)	CURVE	OFFSET (ft)	CURVE	OFFSET (ft)	CURVE	OFFSET (ft)
BIT	0.00	CAL	90.00	GR	111.75	TEN	0.00

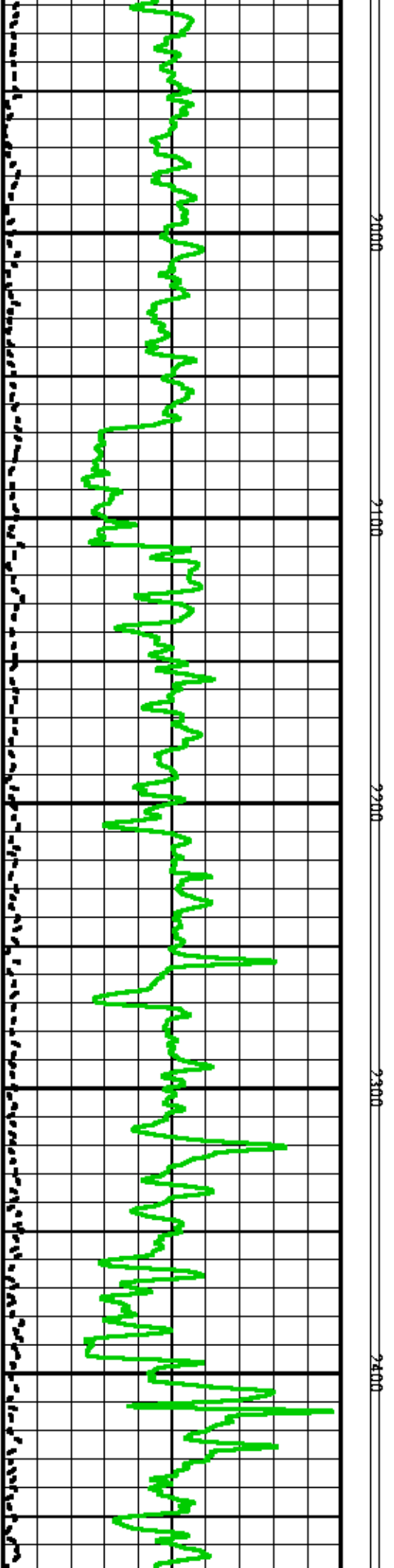
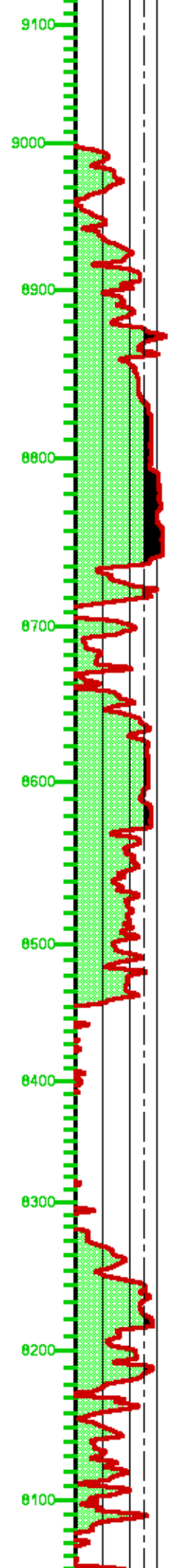
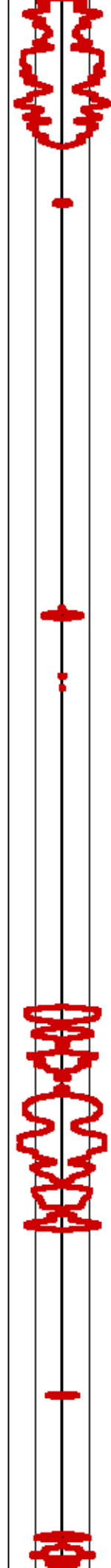
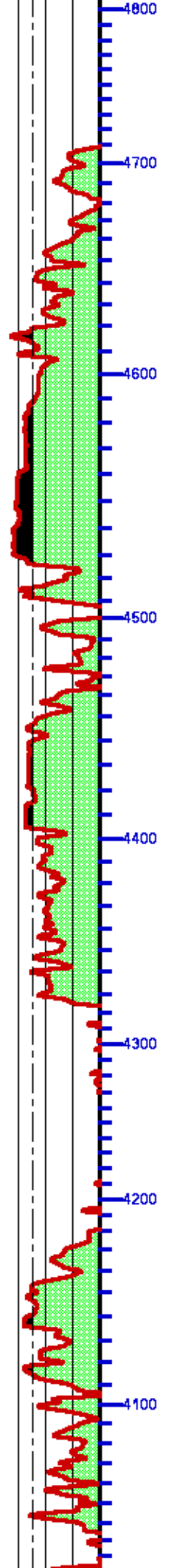
**Presentation** : HL6670:/dat1a/625272/BHP.fvpdf [2"/100' Scale]  
**Plot Interval** : -19.25 - 10551 Feet  
  
**Data File 1** : F1 : HL6670:/dat1a/625272/n777v02-MAIN1.xdf  
**Created On** : Dec 8 11:21:33 2013  
**Company** : WPX ENERGY INC  
**Well** : PUCKETT GM 701-28-HN1  
**Field** : RULISON  
**File Interval** : -19.25 - 10551 Feet  
**OCT** : n777v

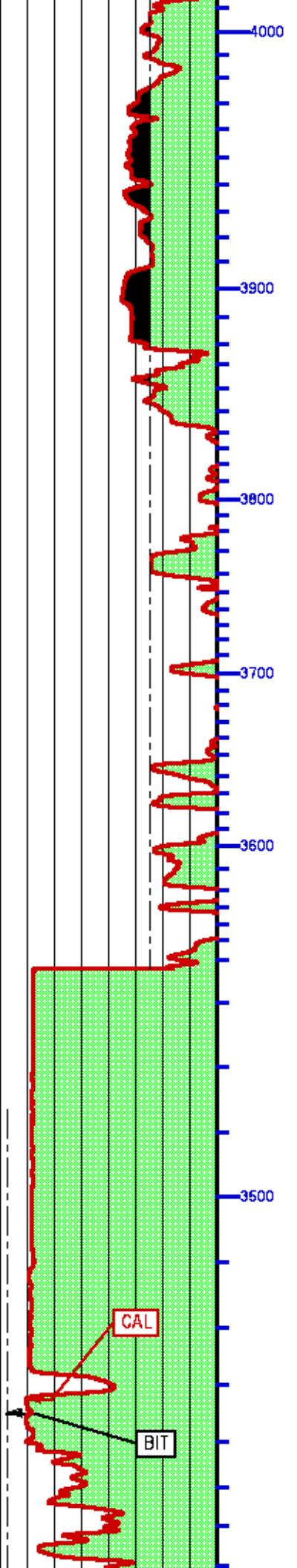
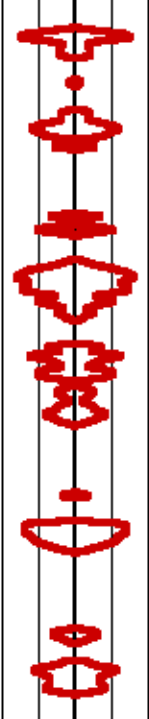
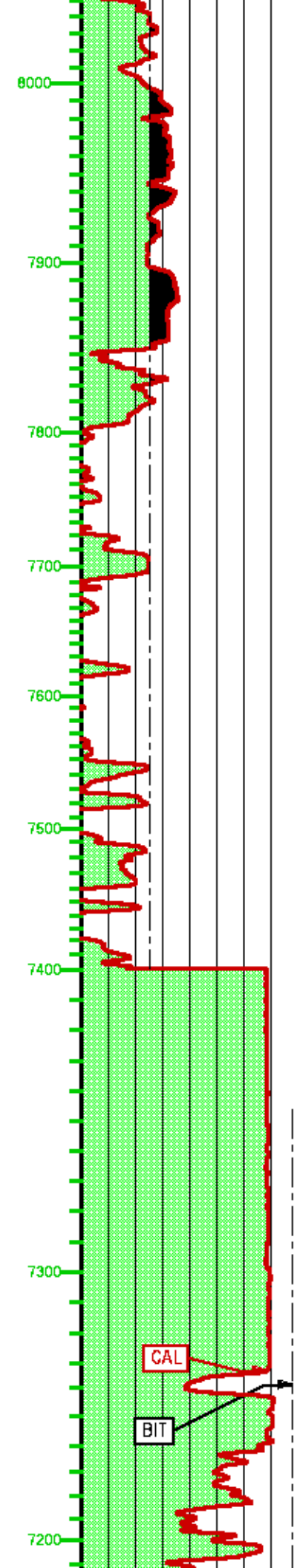
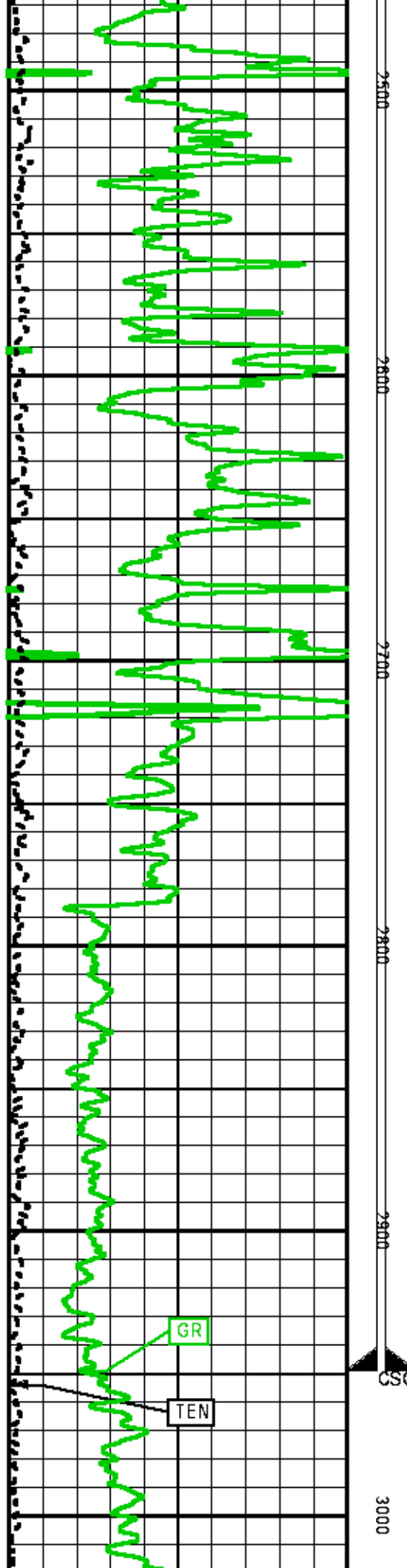


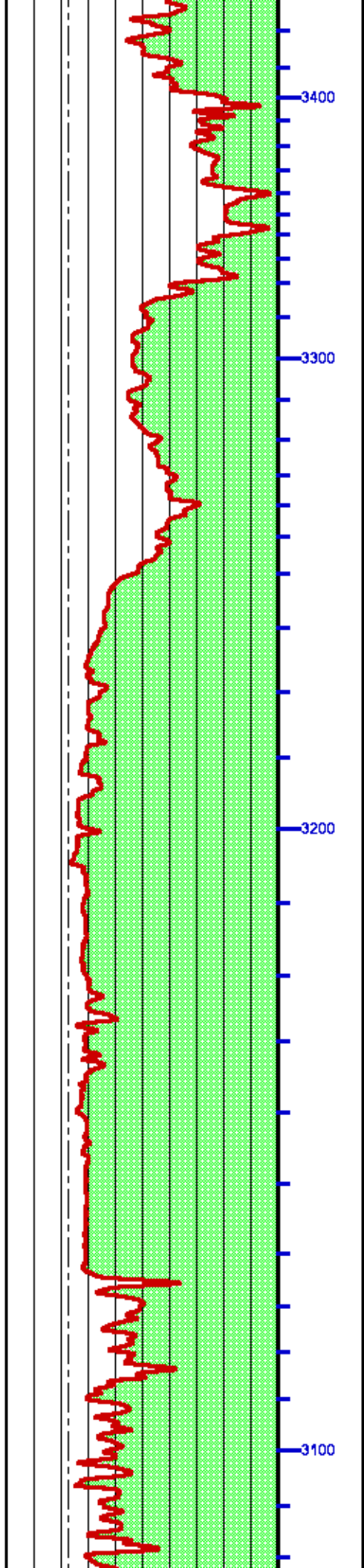
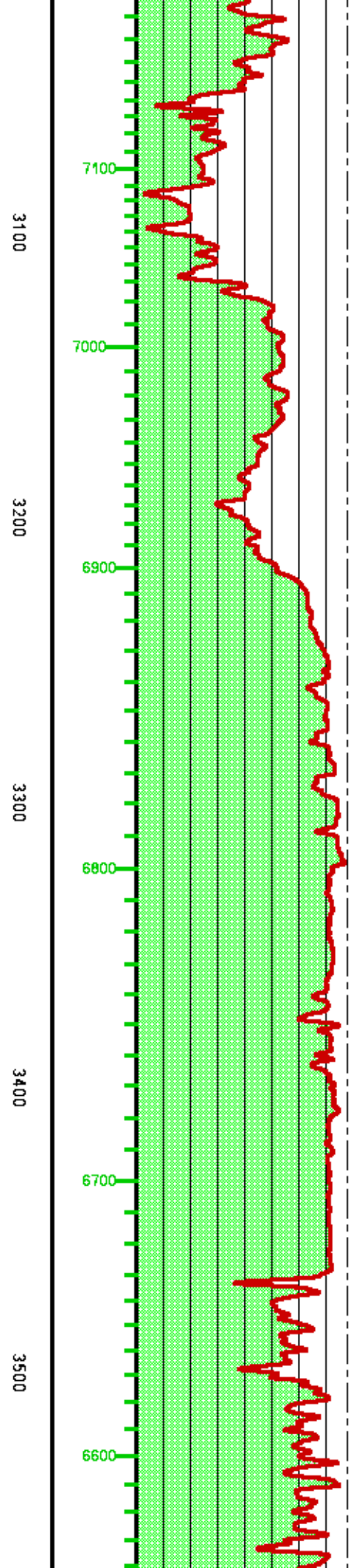
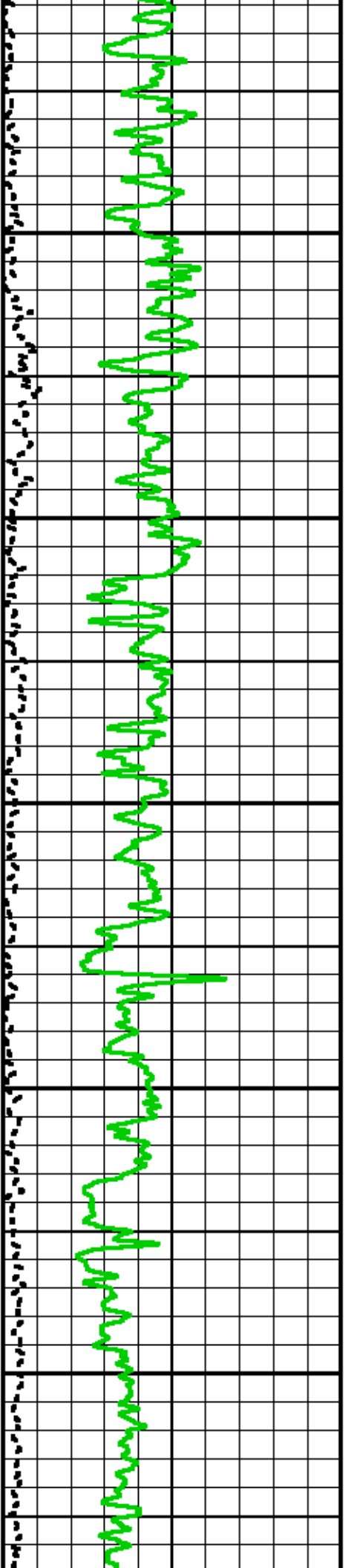


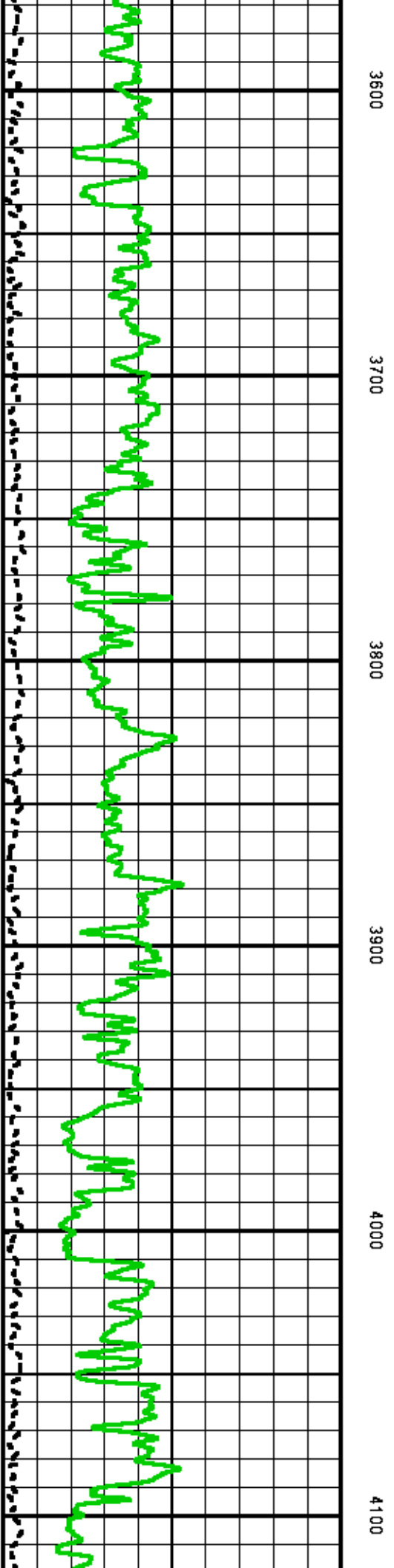
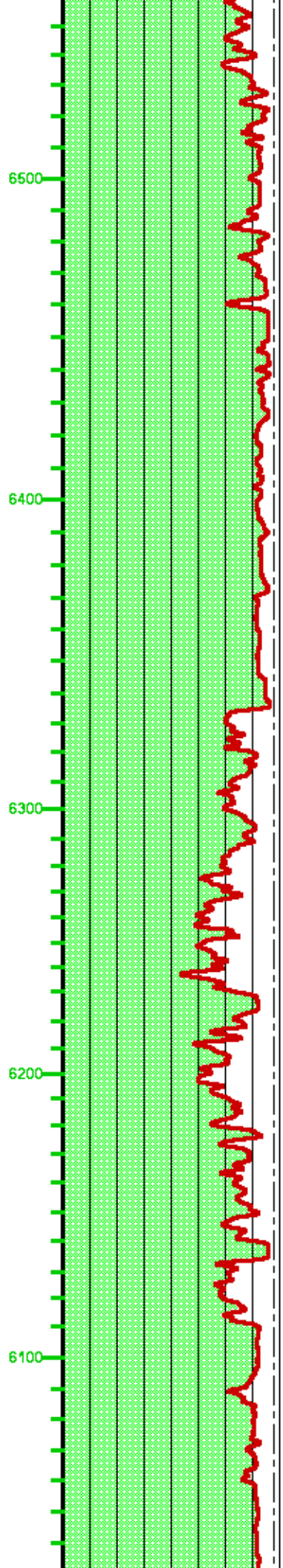
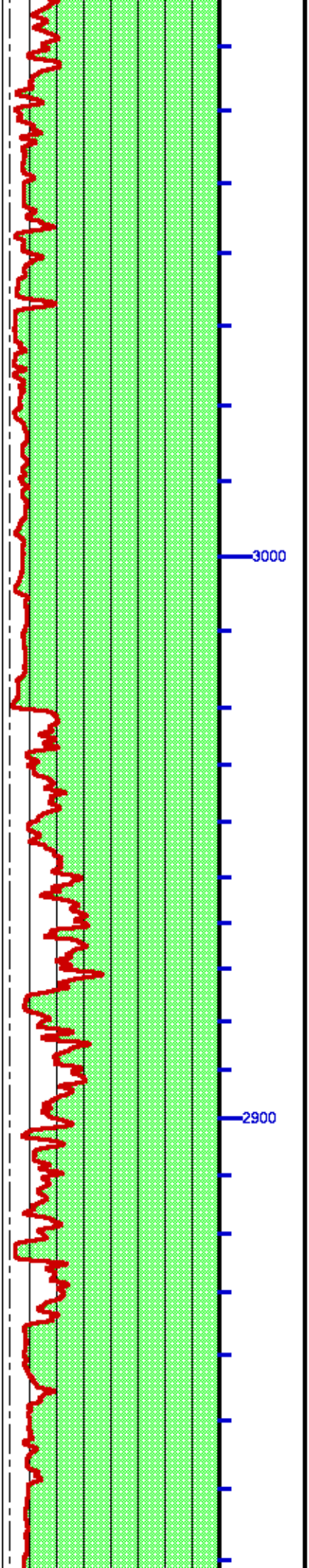


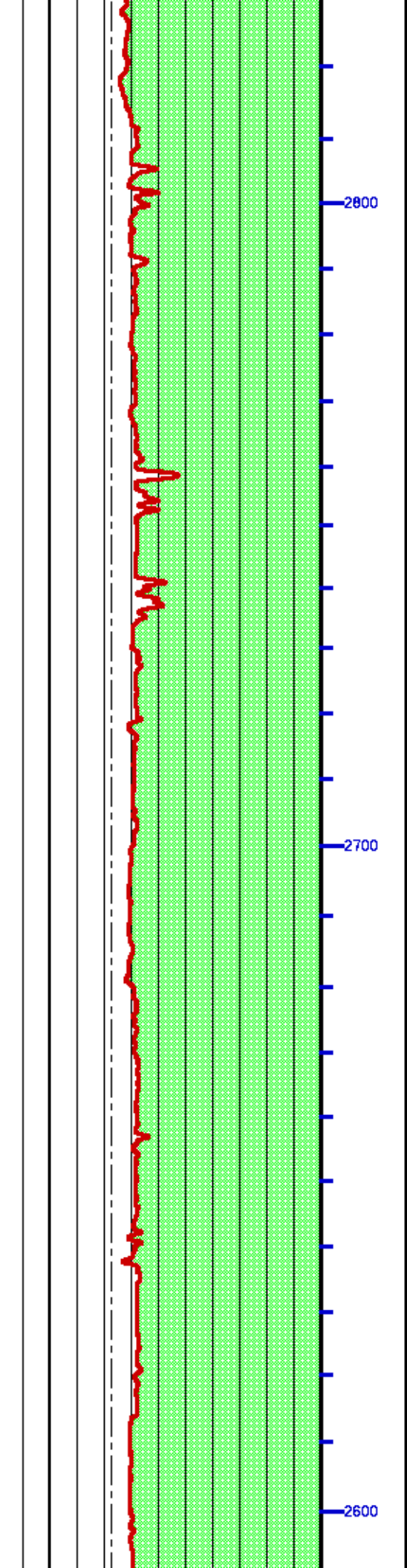
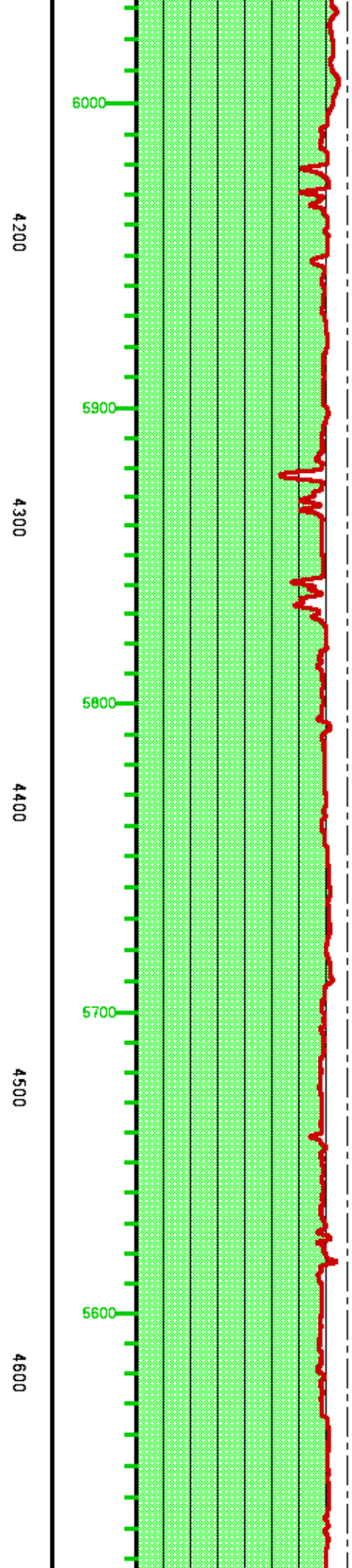
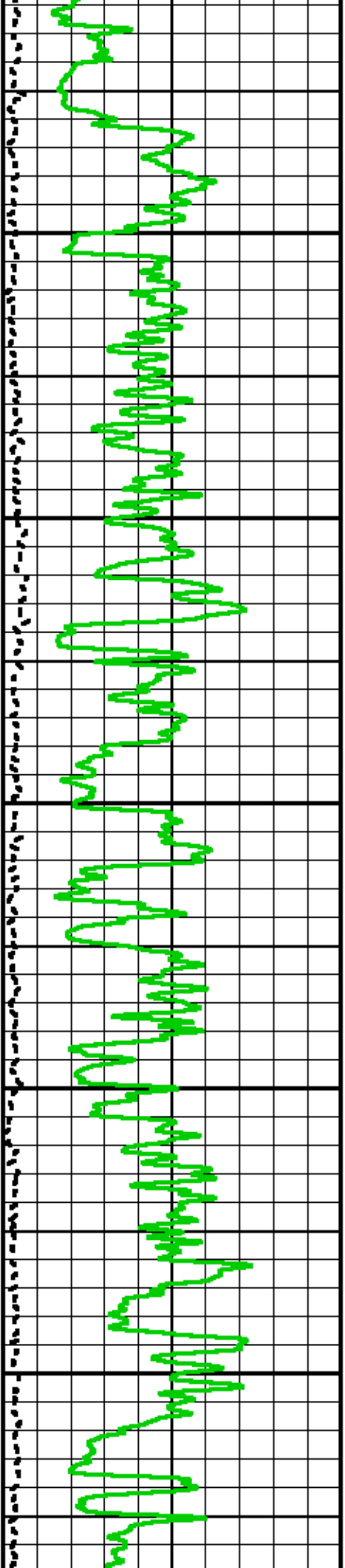


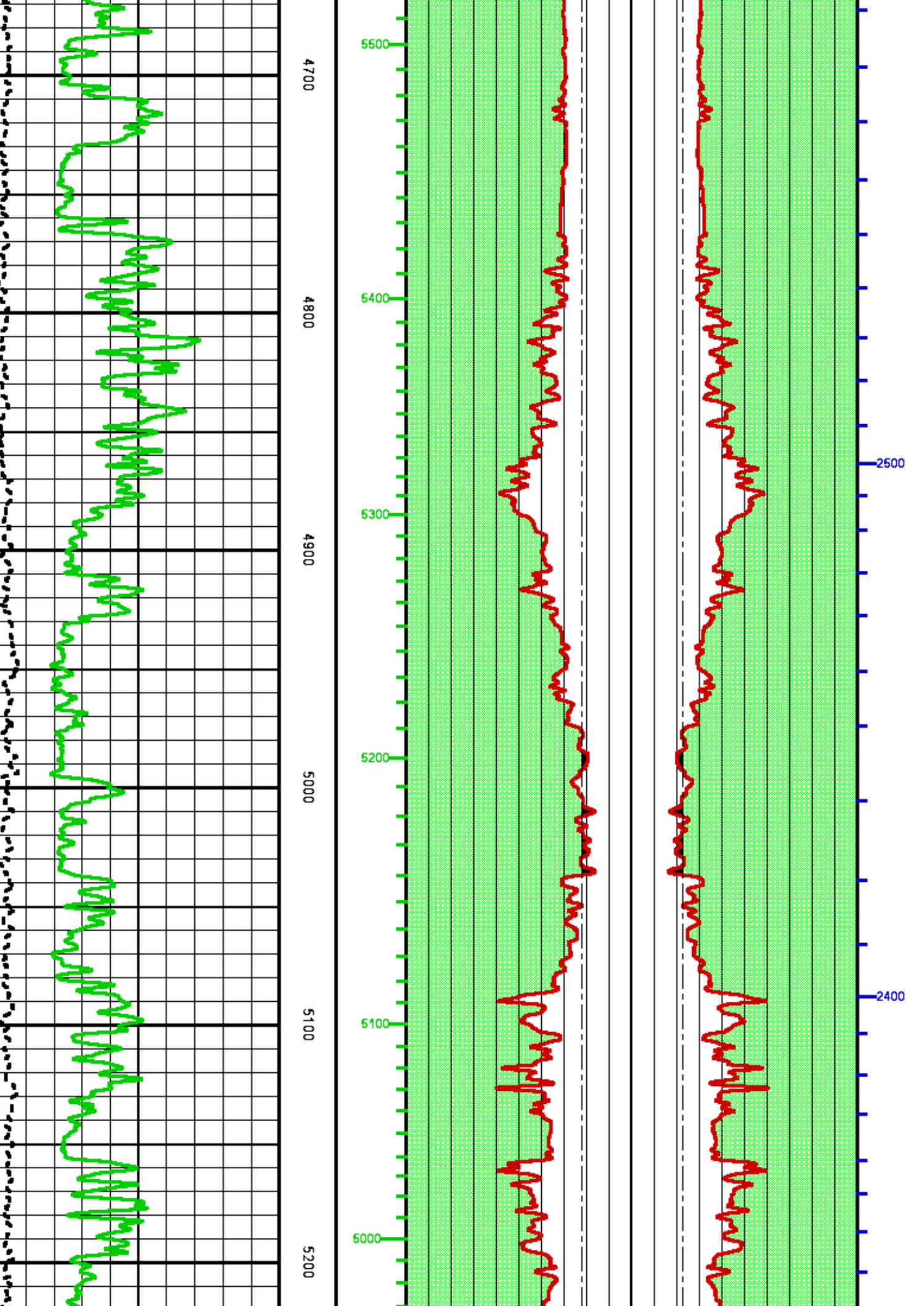


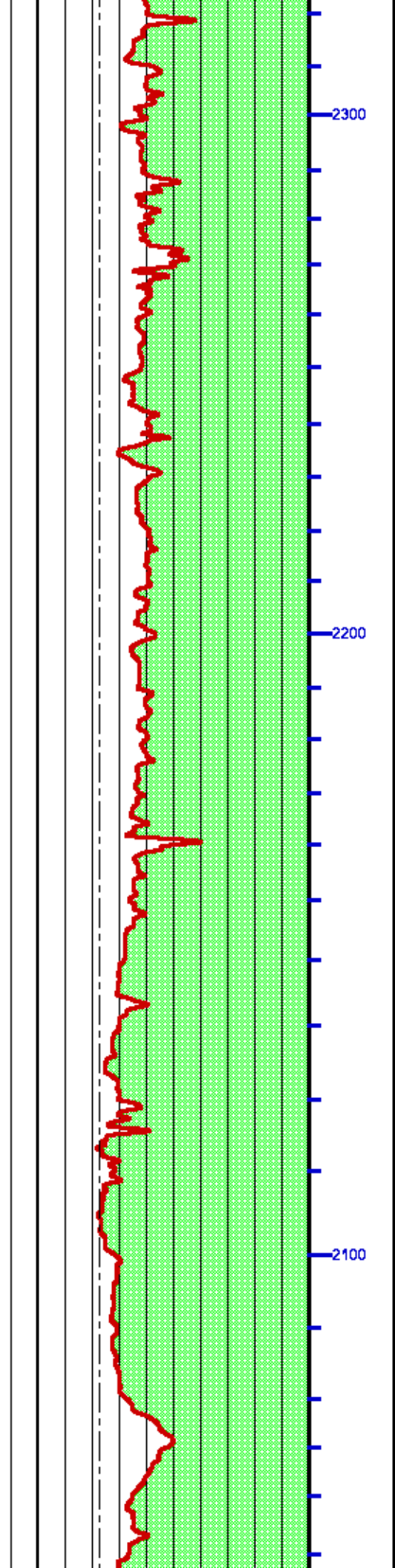
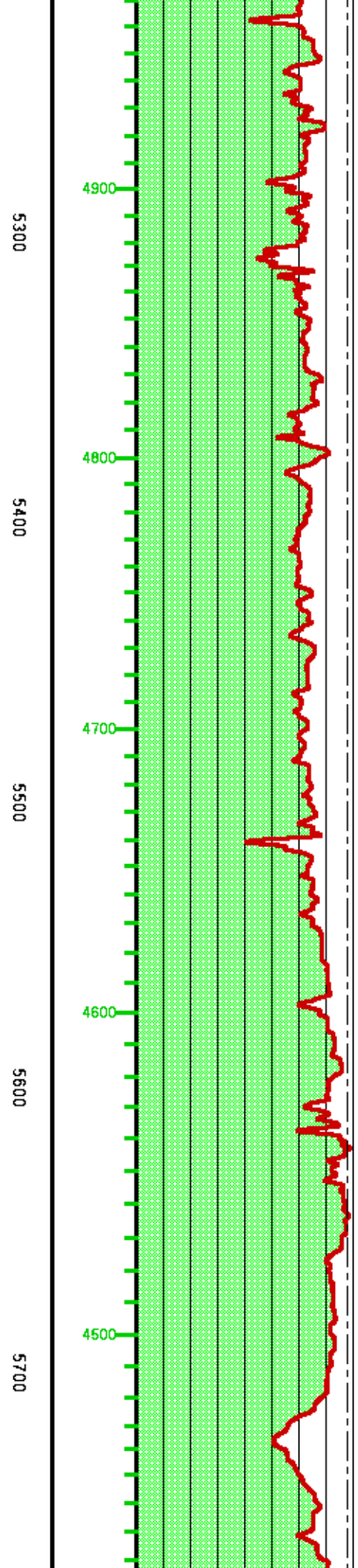
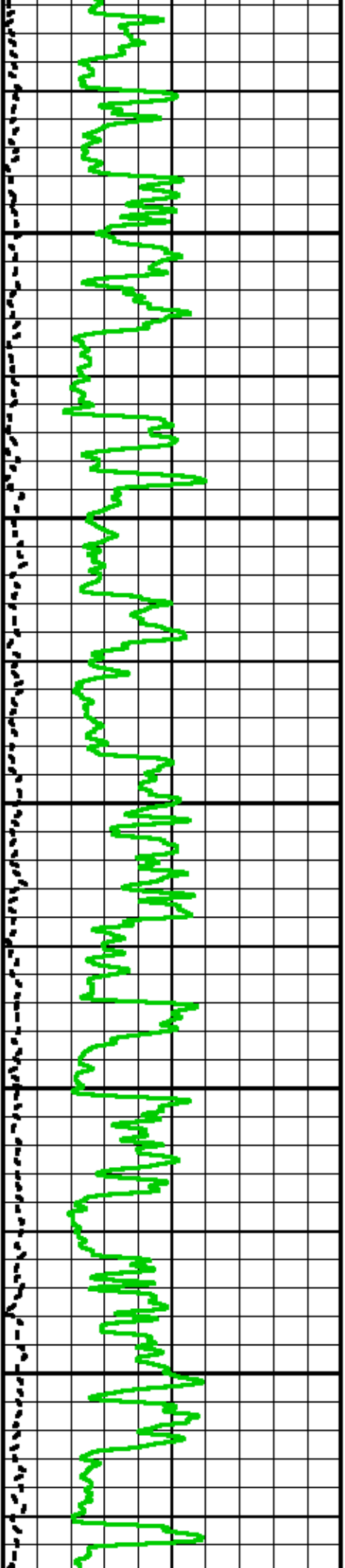


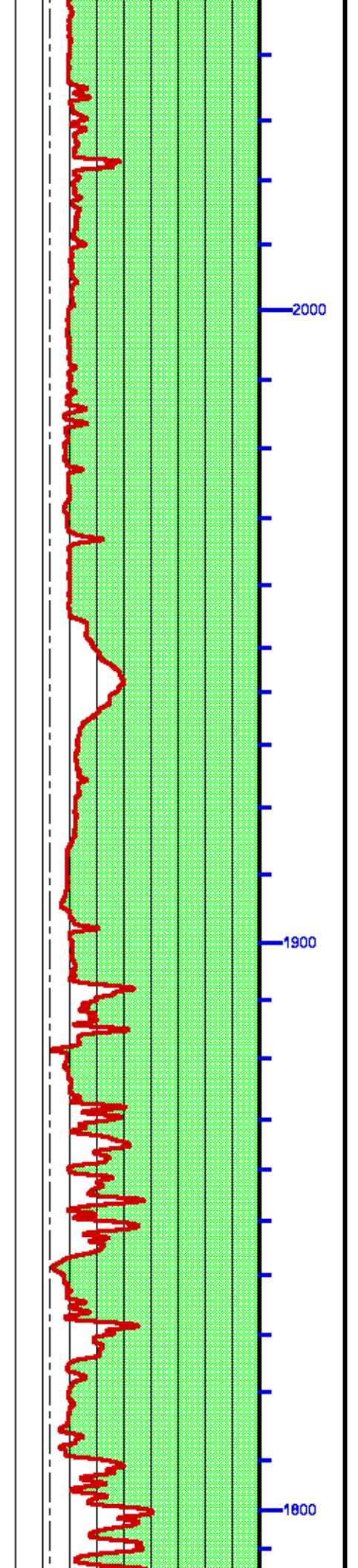
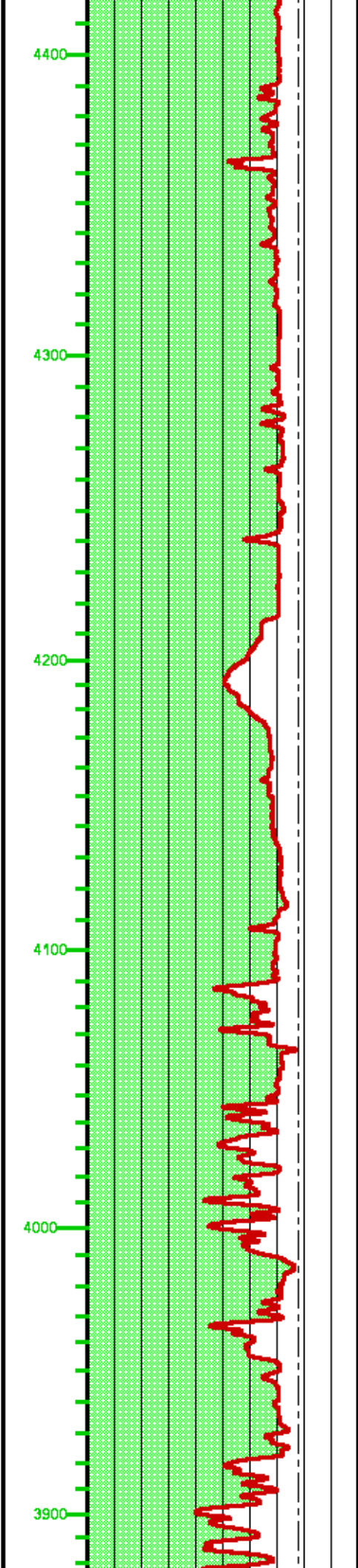
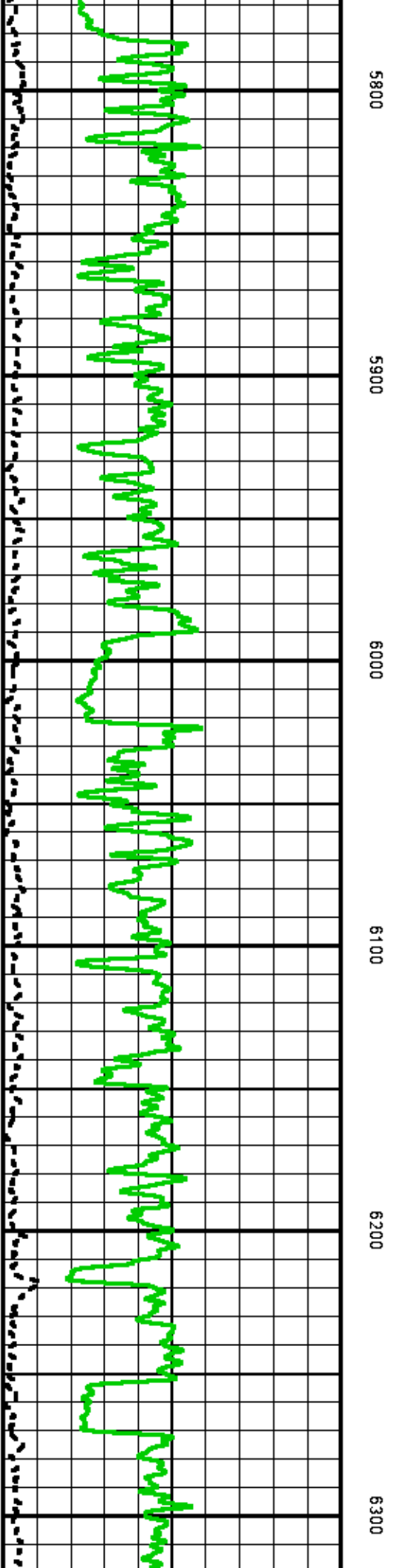


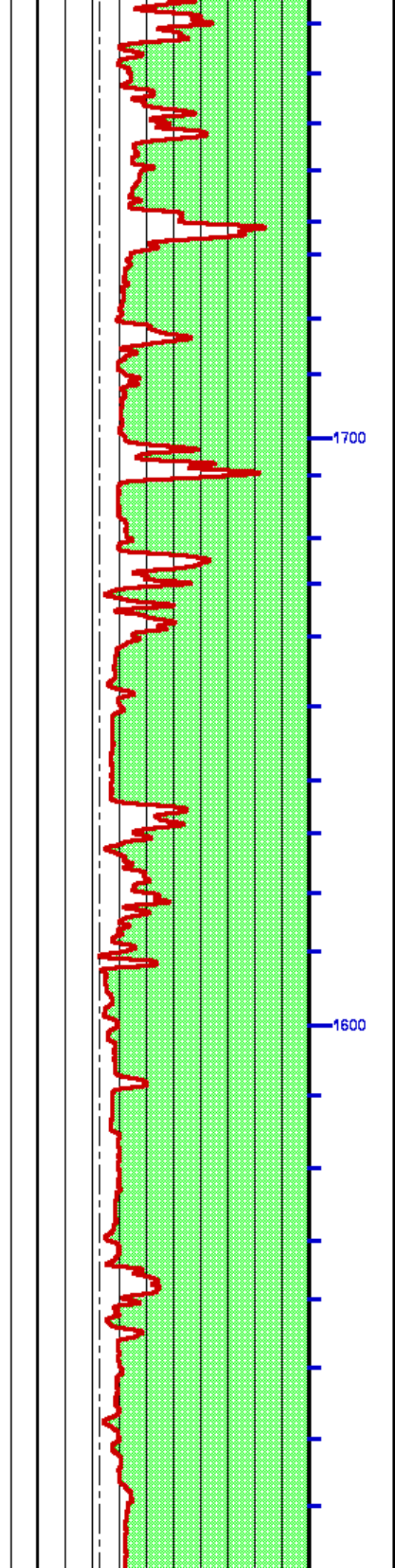
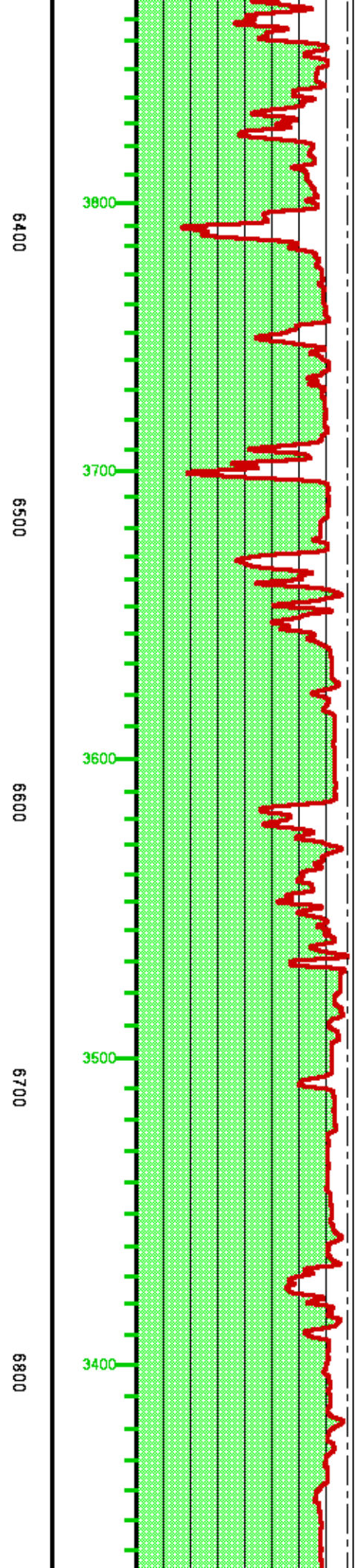
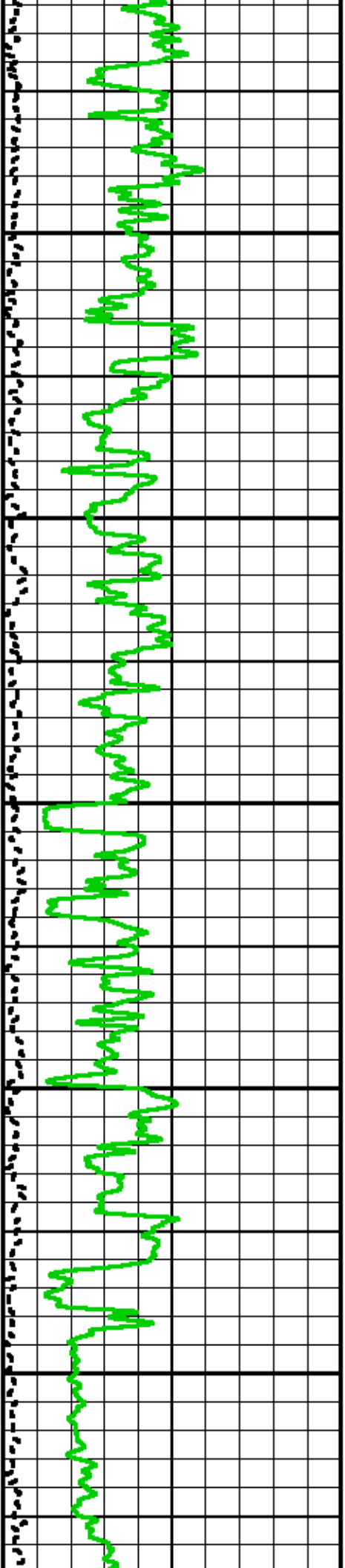


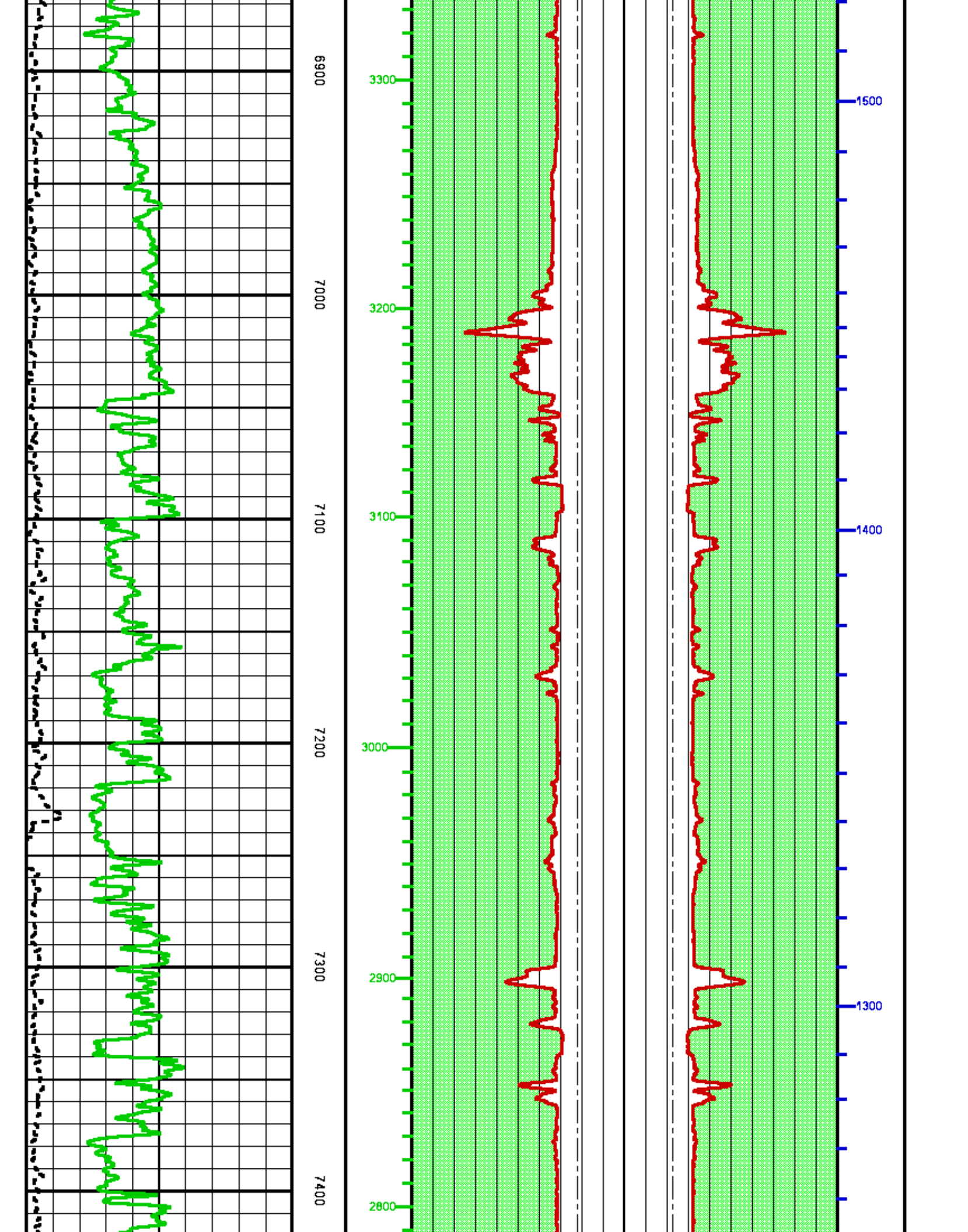


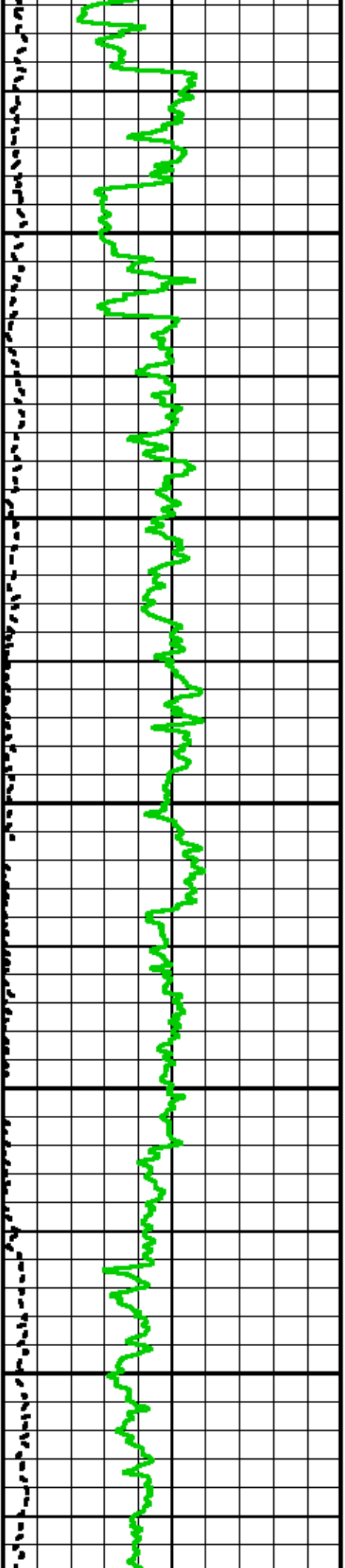












7500

7600

7700

7800

7900

2700

2600

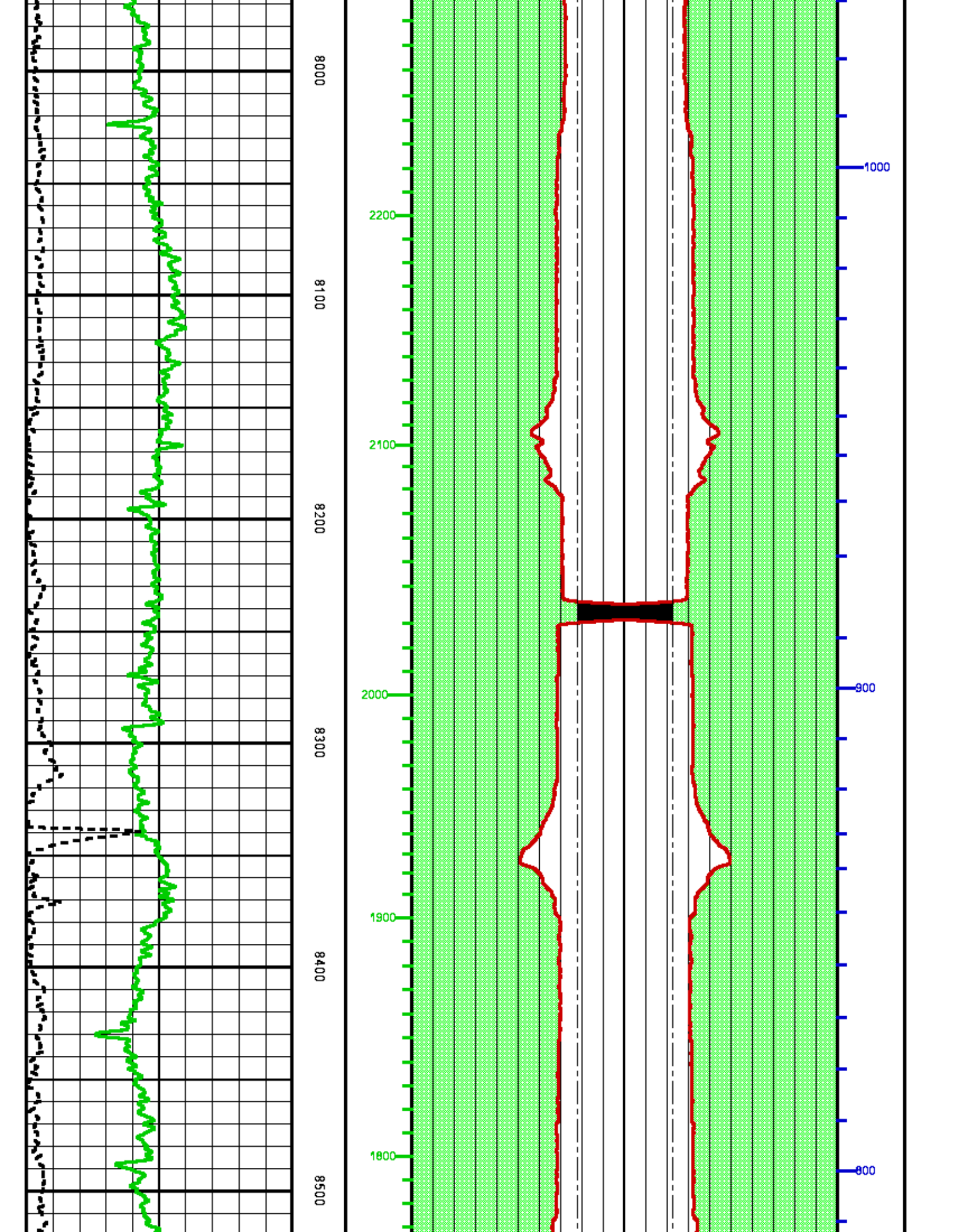
2500

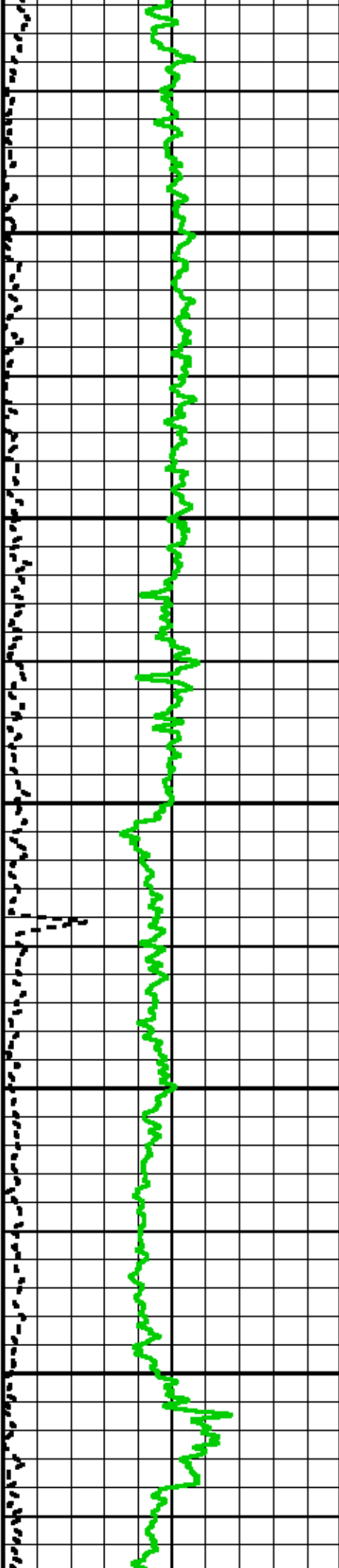
2400

2300

1200

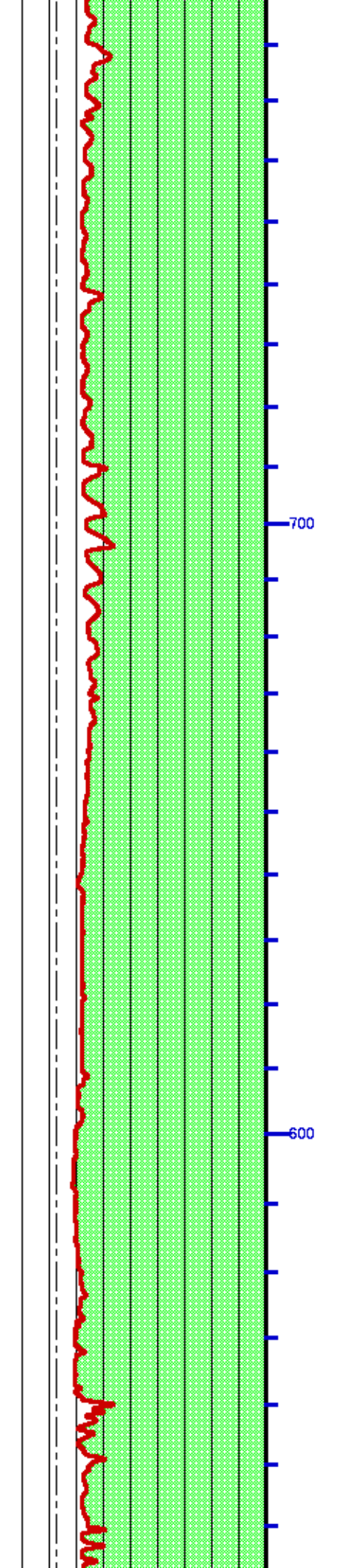
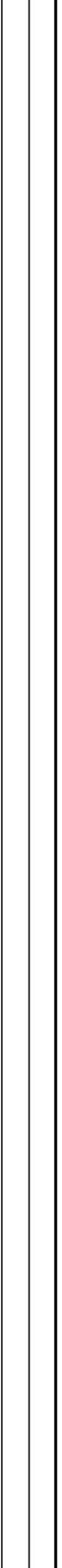
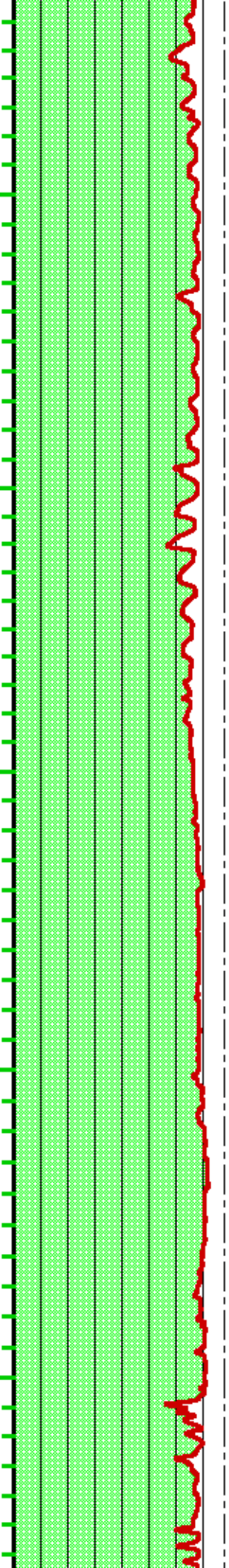
1100

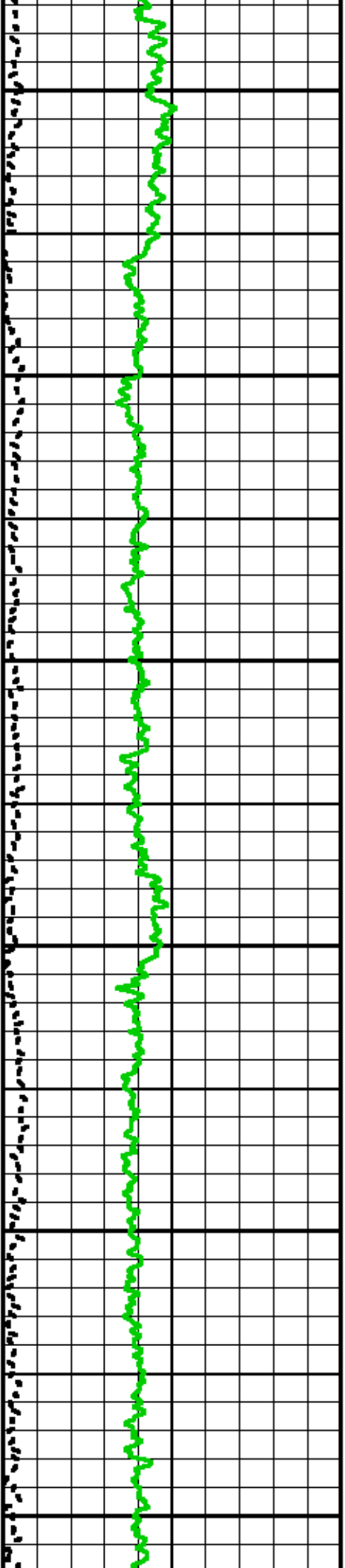




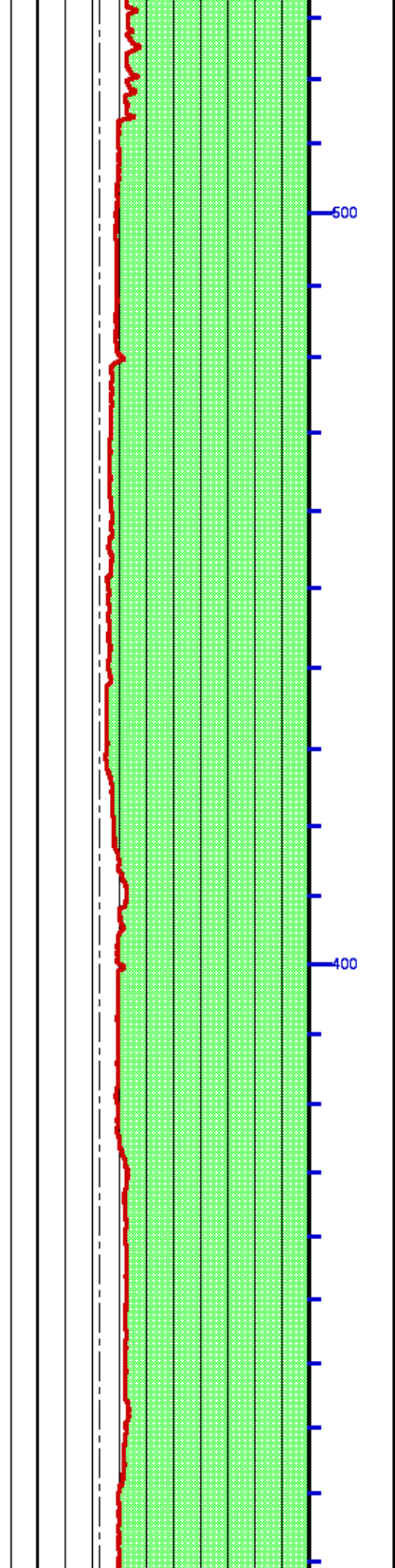
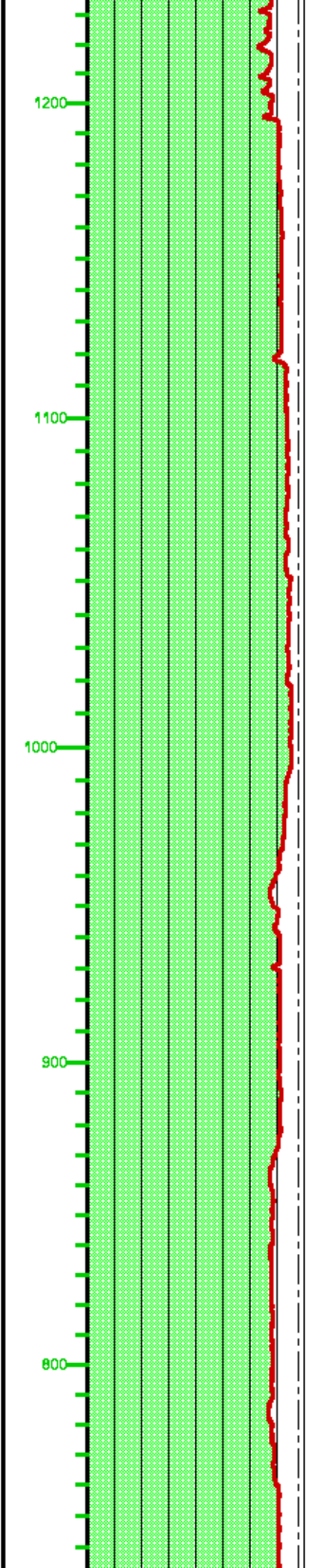
8600 8700 8800 8900 9000

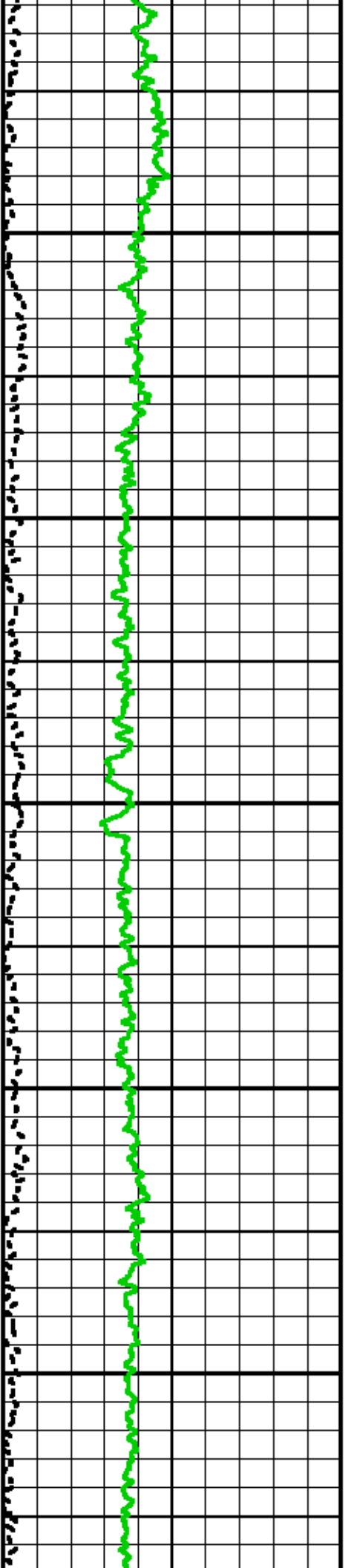
1700 1600 1500 1400 1300



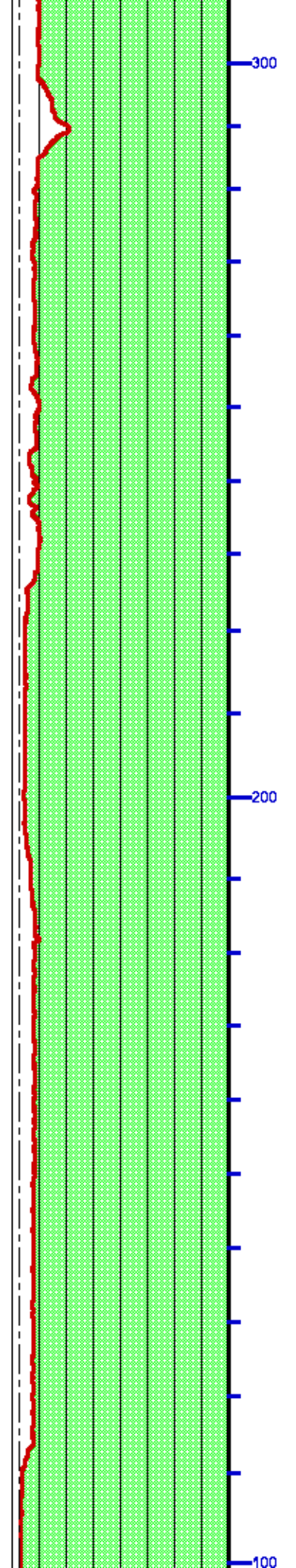
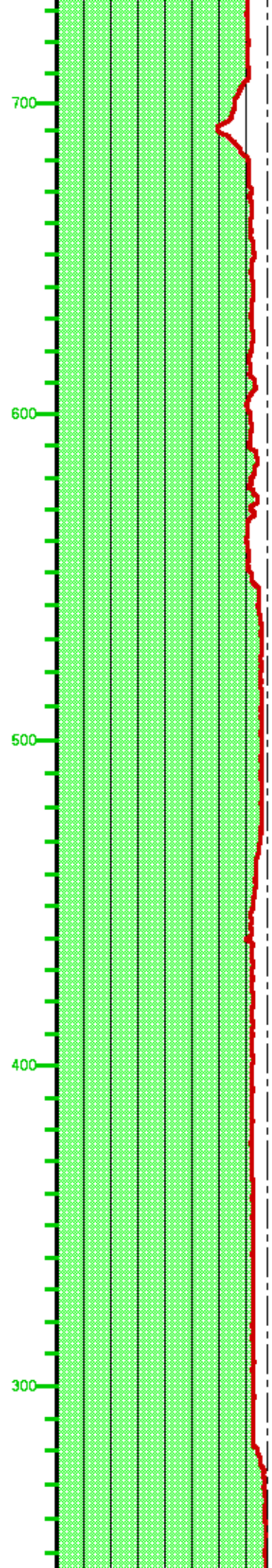


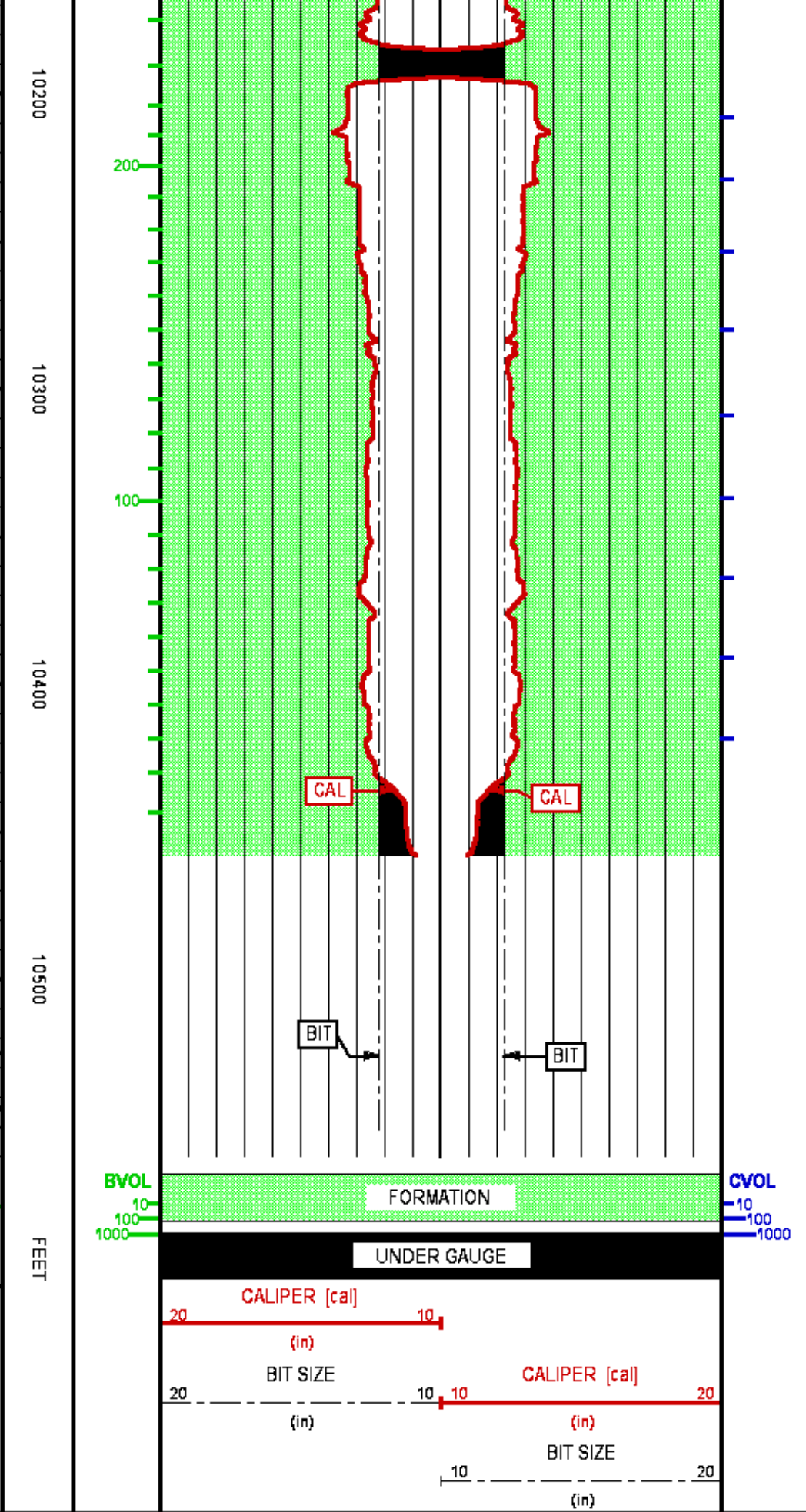
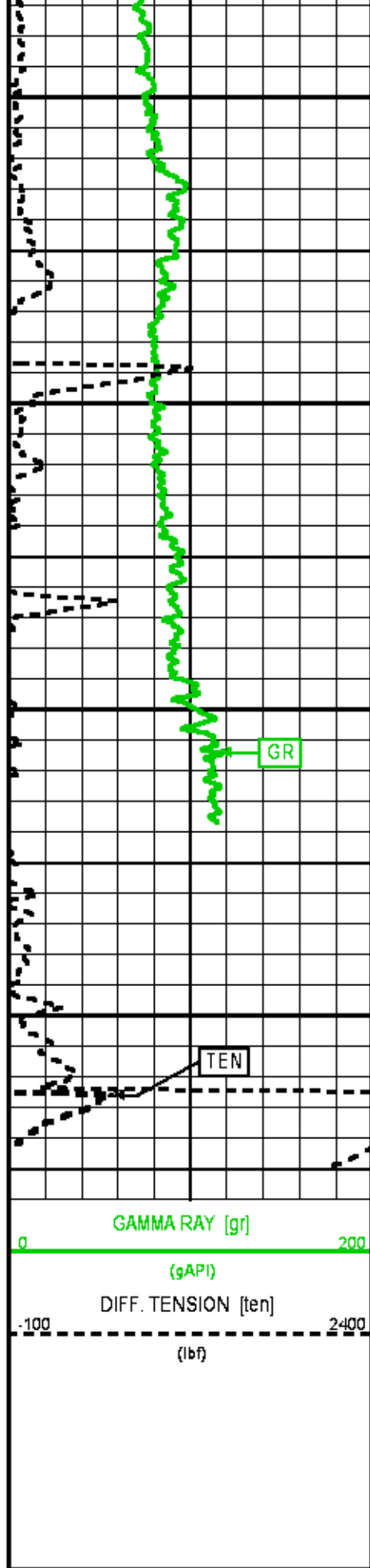
9100 9200 9300 9400 9500 9600





9700 9800 9900 10000 10100







<b>COMPANY</b>	<b>WPX ENERGY INC</b>	<b>FILE NO:</b>
<b>WELL</b>	<b>PUCKETT GM 701-28-HN1</b>	<b>US625272</b>
<b>FIELD</b>	<b>RULISON</b>	<b>API NO:</b>
<b>COUNTY</b>	<b>GARFIELD</b> STATE <b>CO</b>	<b>05045221540000</b>
<b>LOCATION:</b>	<b>ELEVATIONS:</b>	<b>S28 T6S R96W</b>
SHL: 1314' FNL; 1035' FWL	<b>KB 5629 FT</b>	<b>PAD: GM 11-28</b>
BHL: 535' FNL; 629' FWL	<b>DF</b>	<b>RIG: AZTEC 1000</b>
<b>GL 5604 FT</b>		
<b>SEC 28 TWP 6S RGE 96W</b>	<b>DATE</b>	<b>08-Dec-2013</b>

